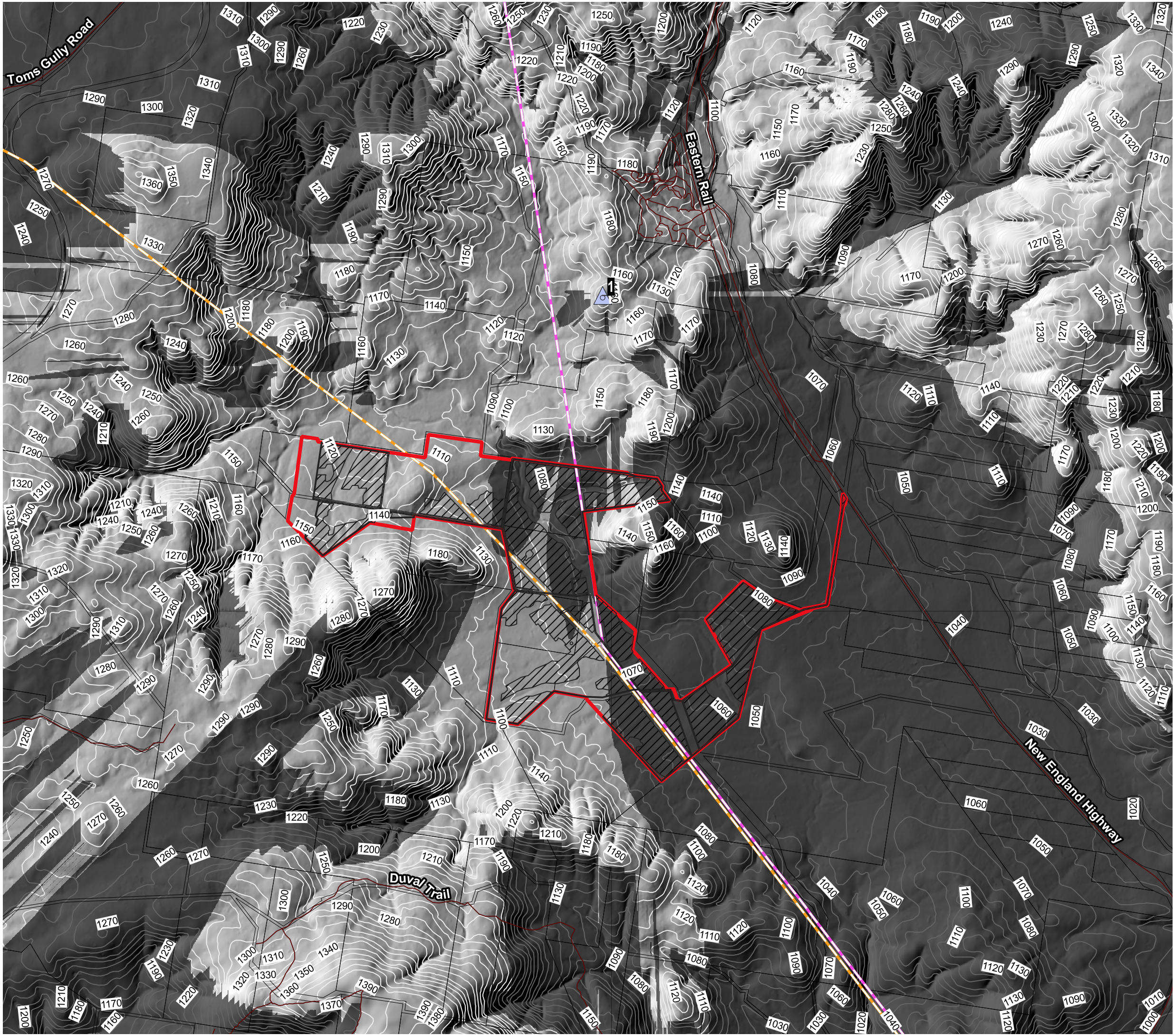


F.1 Wireframe analysis

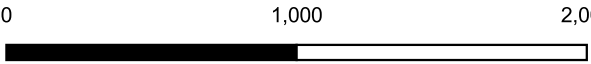


Reverse Viewshed for reciever R1

Tilbuster Solar Farm RTS and
Amendment Report

Legend

- Proposal Site
- Development footprint
- Roads
- Contour
- Existing Transmission Lines**
 - 330 kV Transmission Line
 - 132 kV Transmission Line
- Lot
- Sensitive Receivers**
 - Residential Receiver
- Reverse viewshed**
 - Not visible to receiver
 - Visible to receiver



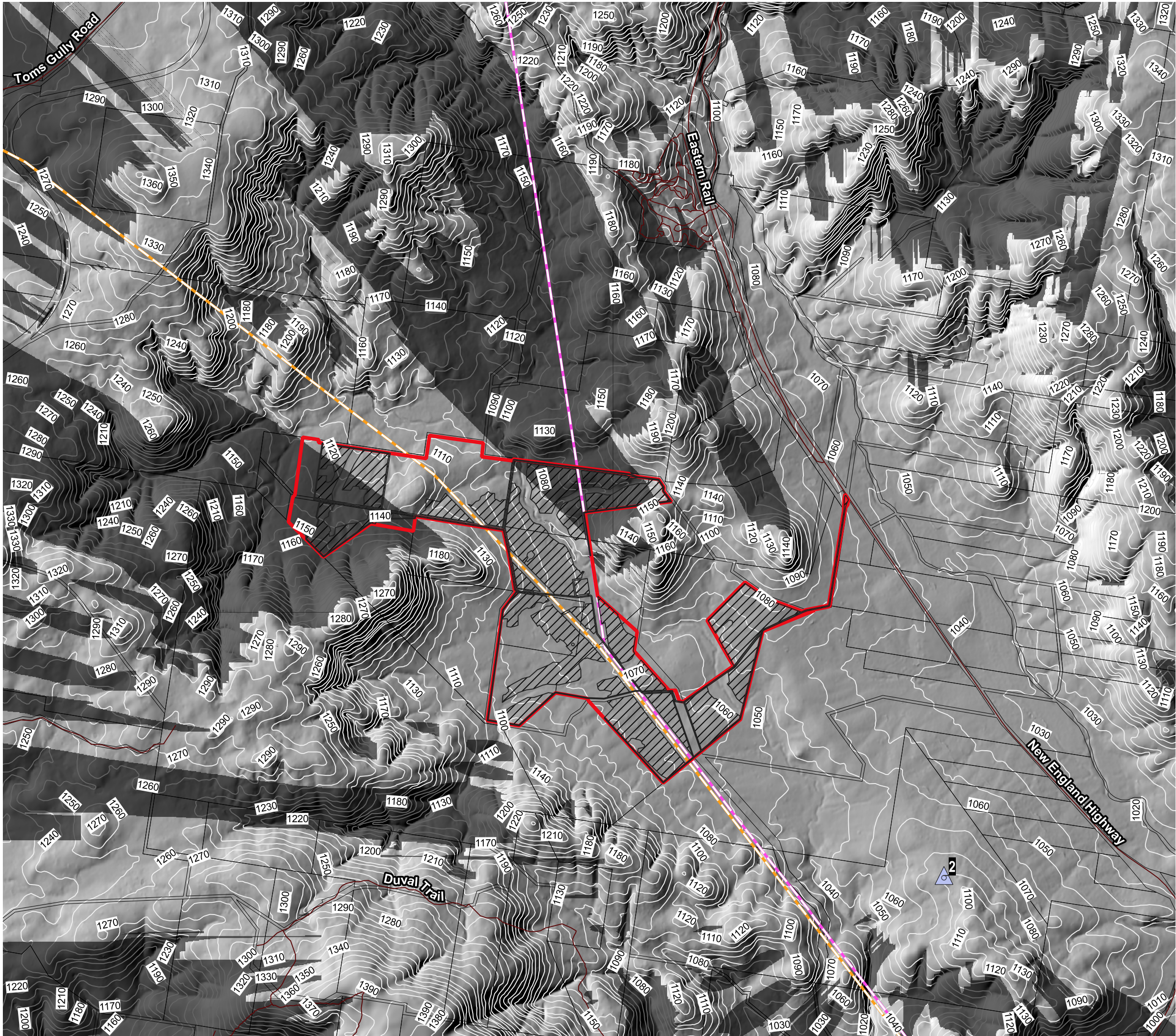
Data Attribution
© NGH 2021
© Enerparc 2020
© NSW LPI 2020

Ref: 20-729 RTS and Amendment report
20210304
Author: Clancy B
Date created: 17.08.2021
Datum GDA94 / MGA zone 56



NGH



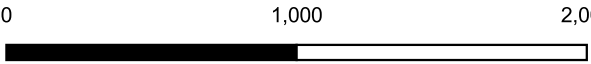


Reverse Viewshed for reciever R2

Tilbuster Solar Farm RTS and
Amendment Report

Legend

- Proposal Site
- Development footprint
- Roads
- Contour
- NPWS Estate
- Existing Transmission Lines
 - 330 kV Transmission Line
 - 132 kV Transmission Line
- Lot
- Sensitive Receivers
 - Residential Receiver
- Reverse viewshed
 - Not visible to receiver
 - Visible to receiver

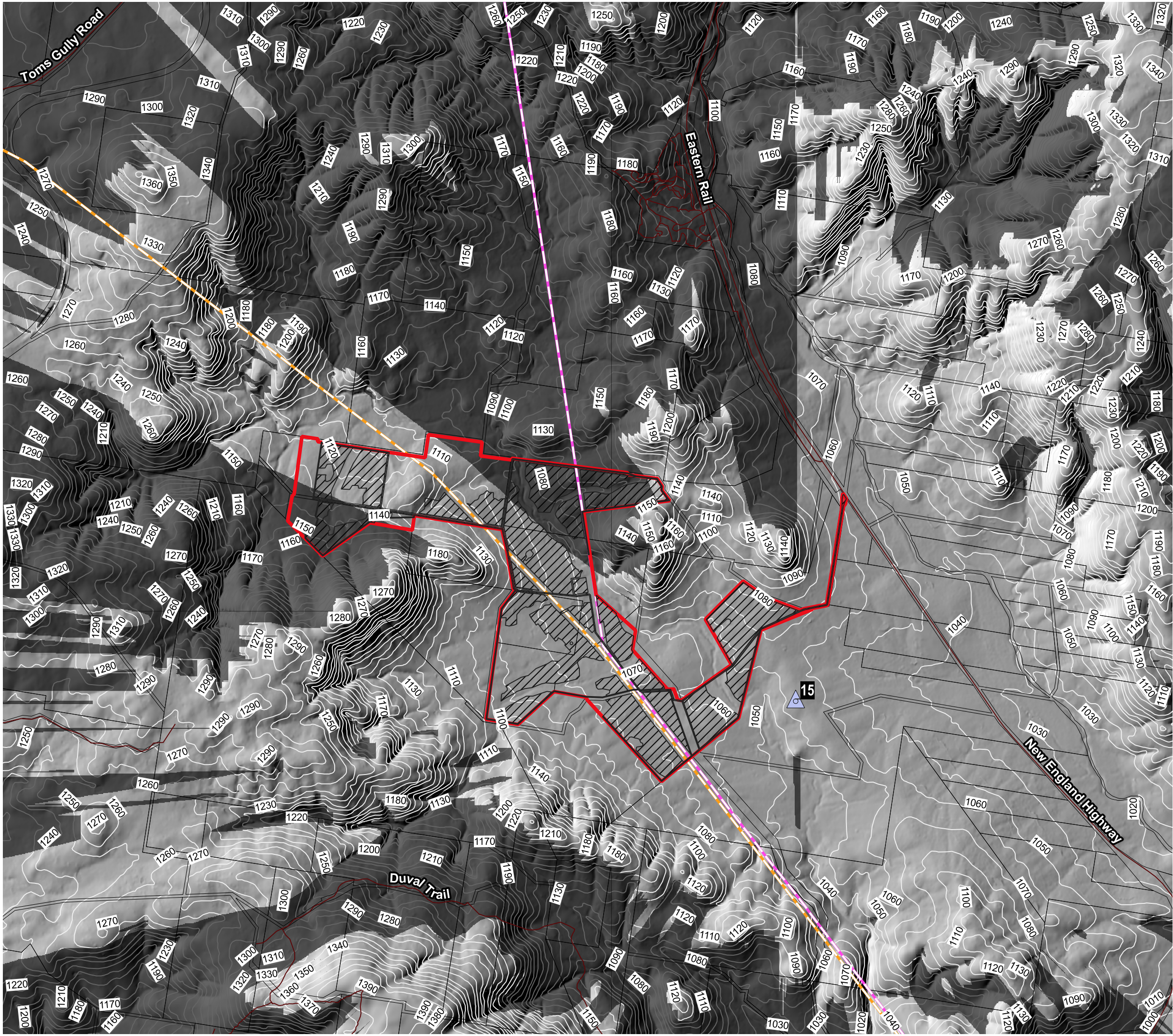


Data Attribution
© NGH 2021
© Enerparc 2020
© NSW LPI 2020

Ref: 20-729 RTS and Amendment report
20210304
Author: Clancy B
Date created: 17.08.2021
Datum GDA94 / MGA zone 56



NGH

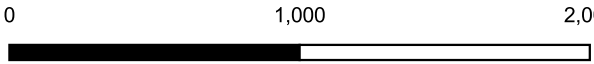


Reverse Viewshed for reciever R15

Tilbuster Solar Farm RTS and
Amendment Report

Legend

- Proposal Site
- Development footprint
- Roads
- Contour
- Existing Transmission Lines
 - 330 kV Transmission Line
 - 132 kV Transmission Line
- Lot
- Sensitive Receivers
 - Residential Receiver
- Reverse viewshed
 - Not visible to receiver
 - Visible to receiver

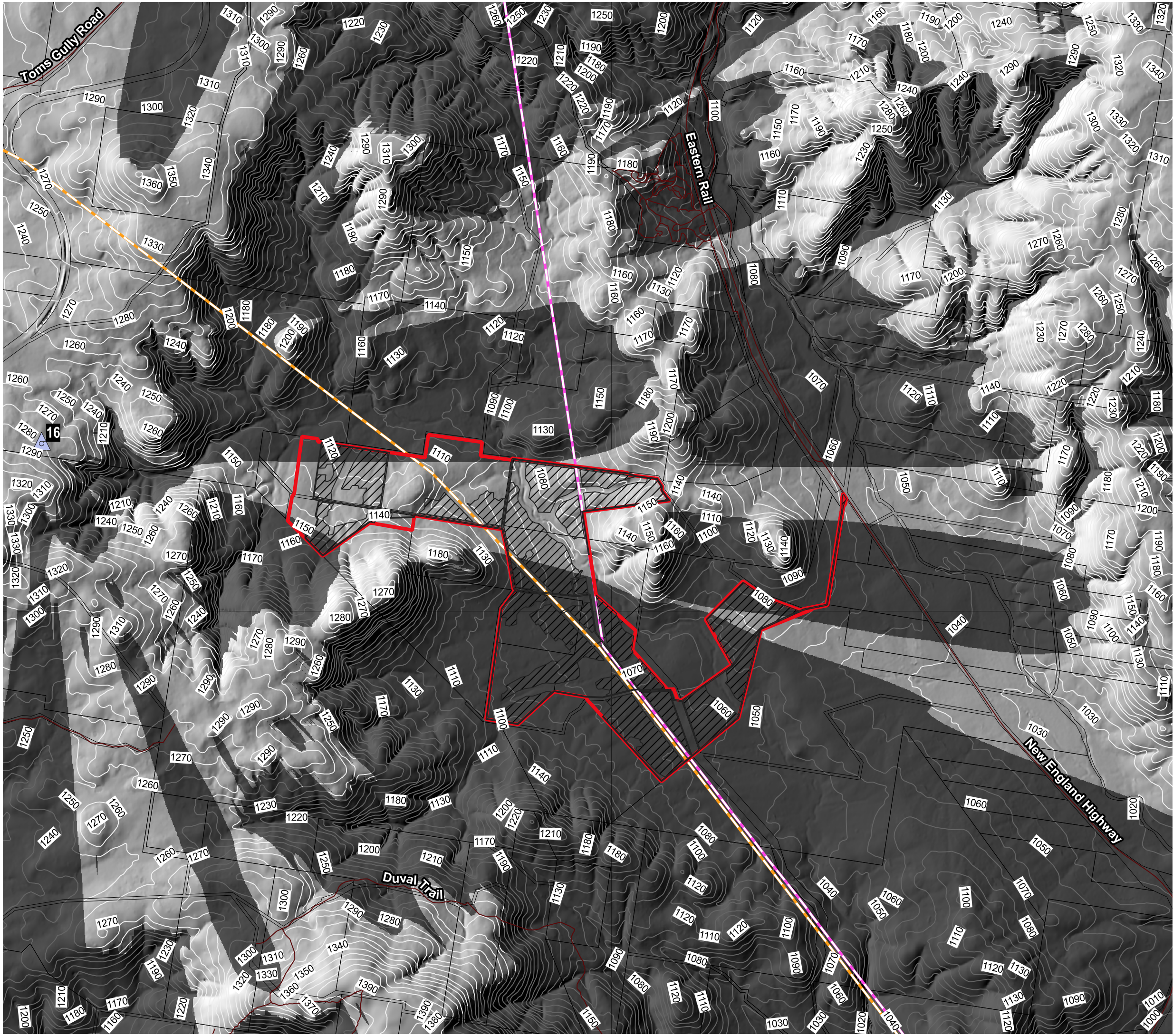


Data Attribution
© NGH 2021
© Enerparc 2020
© NSW LPI 2020

Ref: 20-729 RTS and Amendment report
20210304
Author: Clancy B
Date created: 17.08.2021
Datum GDA94 / MGA zone 56













NGH

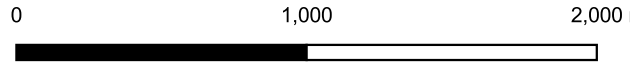


Reverse Viewshed for reciever R16

Tilbuster Solar Farm RTS and
Amendment Report

Legend

-  Proposal Site
-  Development footprint
-  Roads
-  Contour
- Existing Transmission Lines**
 -  330 kV Transmission Line
 -  132 kV Transmission Line
-  Lot
- Sensitive Receivers**
 -  Residential Receiver
- Reverse viewshed**
 -  Not visible to receiver
 -  Visible to receiver



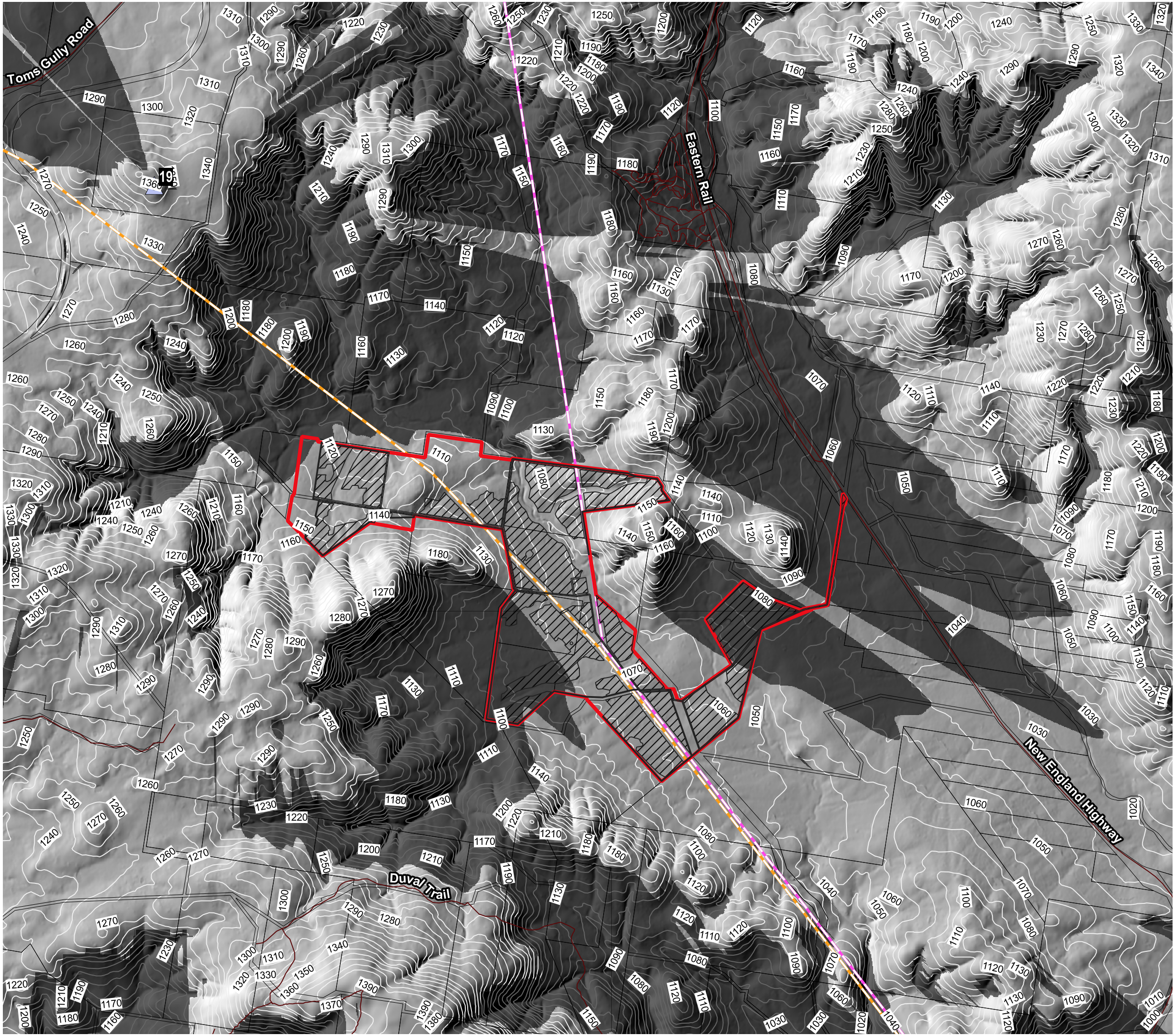
Data Attribution
© NGH 2021
© Enerparc 2020
© NSW LPI 2020

Ref: 20-729 RTS and Amendment report
20210304
Author: Clancy B
Date created: 17.08.2021
Datum GDA94 / MGA zone 56



NGH


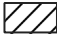




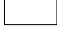





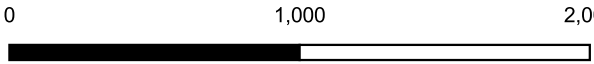


Reverse Viewshed for reciever R19

Tilbuster Solar Farm RTS and
Amendment Report

Legend

-  Proposal Site
-  Development footprint
-  Roads
-  Contour
- Existing Transmission Lines**
 -  330 kV Transmission Line
 -  132 kV Transmission Line
-  Lot
- Sensitive Receivers**
 -  Residential Receiver
- Reverse viewshed**
 -  Not visible to receiver
 -  Visible to receiver



Data Attribution
© NGH 2021
© Enerparc 2020
© NSW LPI 2020

Ref: 20-729 RTS and Amendment report
20210304
Author: Clancy B
Date created: 17.08.2021
Datum GDA94 / MGA zone 56



NGH



F.2 Reverse viewsheds



Tilbuster Solar Farm

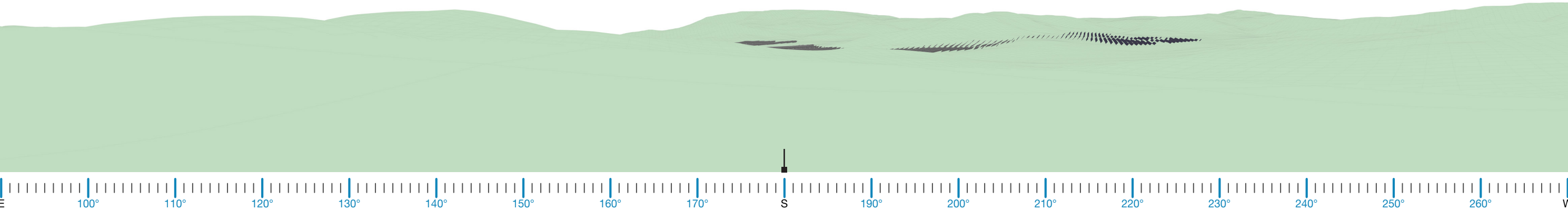
Wireframe Diagram Analysis

Project No: 1800
Issue: Revision B
Date: 24.06.2021

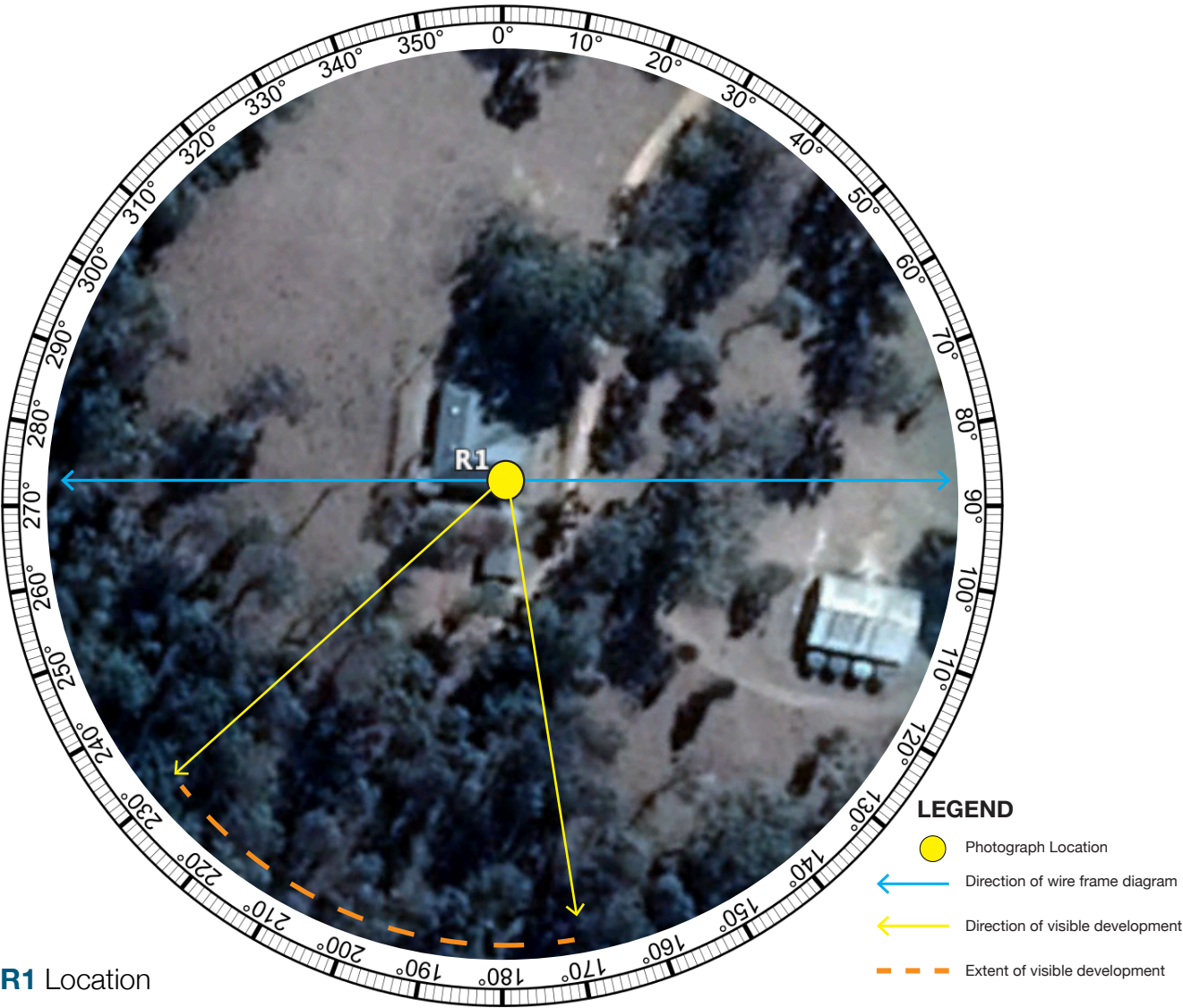
Wireframe Diagram Analysis - Dwelling R1

Proposed View from sensitive receiver

Refer to Cropped Wire Frame and Photograph on following page



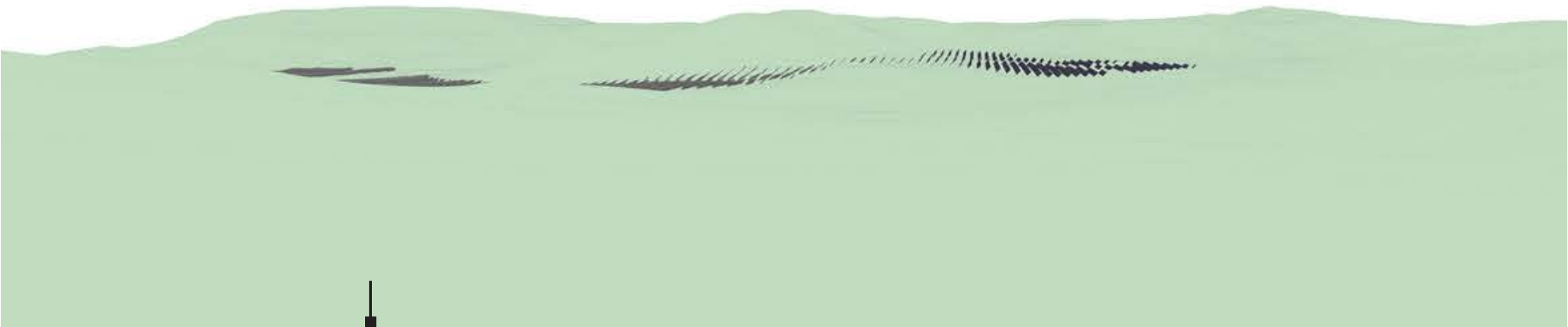
Wireframe Diagram
*NOTE: Wireframe does not take into account vegetation, structures or other features that could fragment views of the development



R1 Location

DWELLING R1		
SUMMARY OF VIEWPOINT		POTENTIAL VISUAL IMPACT
LOCATION	12177 New Engalnd Highway, Black Mountain	View of the proposed development may likely be fragmented from this viewpoint as it is concealed by dense vegetation surrounding the site.
COORDINATES	30°21'31.60"S 151°39'10.84"E	
ELEVATION	1169m	
VIEWING DIRECTION	Generally South	The Visual Effect is assessed as Low and the resulting Visual Impact rating is Low .
DISTANCE TO SITE	1.35 km	
LAND USE	Residential	
VISUAL SENSITIVITY	HIGH	
VISUAL EFFECT	LOW	
VISUAL IMPACT	LOW	

Wireframe Diagram Analysis - Dwelling R1



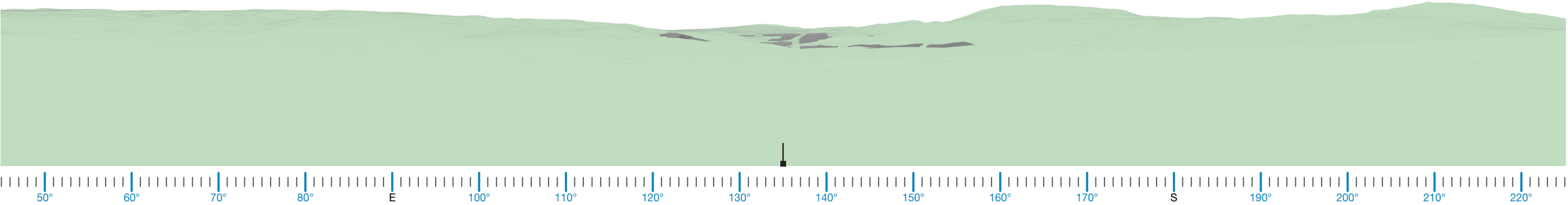
The wire frame diagram (based on topography alone) prepared for R1 indicates the Project would be visible in a generally south direction from the Dwelling.

Aerial imagery indicates dense vegetation to the south of the dwelling in the direction of the Project which intervenes views to the Project.

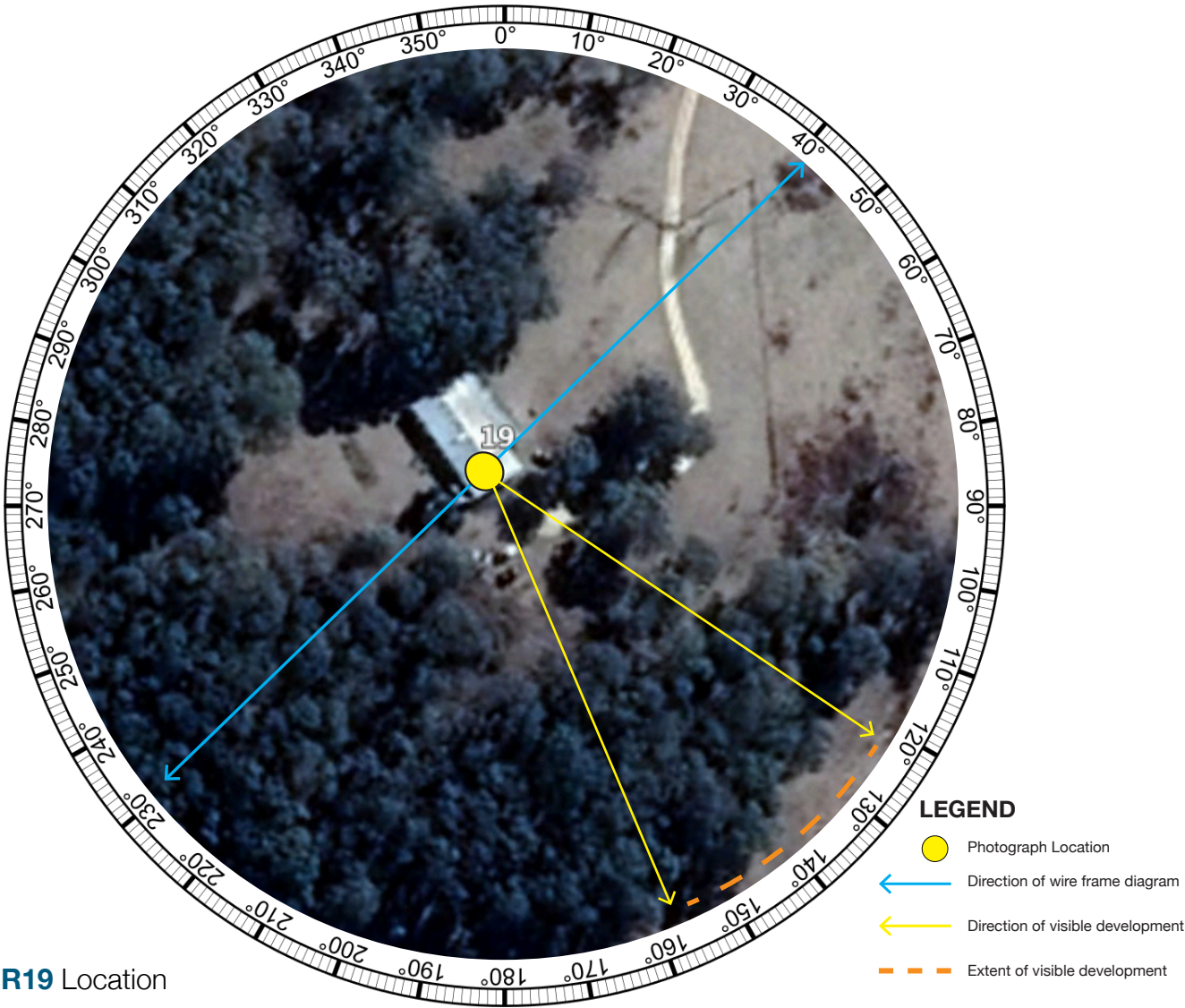
A photograph has been taken from Site (by the client) which has ground-truthed the density of vegetation. At the time the photograph was taken the vegetation had been thinned due to fire damage. Although thinned by the bushfires, the vegetation currently provides adequate screening of the Project from R1. Overtime as the vegetation recovers from the fire damage the screening would be increased, and the impact of the Project would be negligible.

Wireframe Diagram Analysis - Dwelling R19

Proposed View from sensitive receiver



Wireframe Diagram
*NOTE: Wireframe does not take into account vegetation, structures or other features that could fragment views of the development

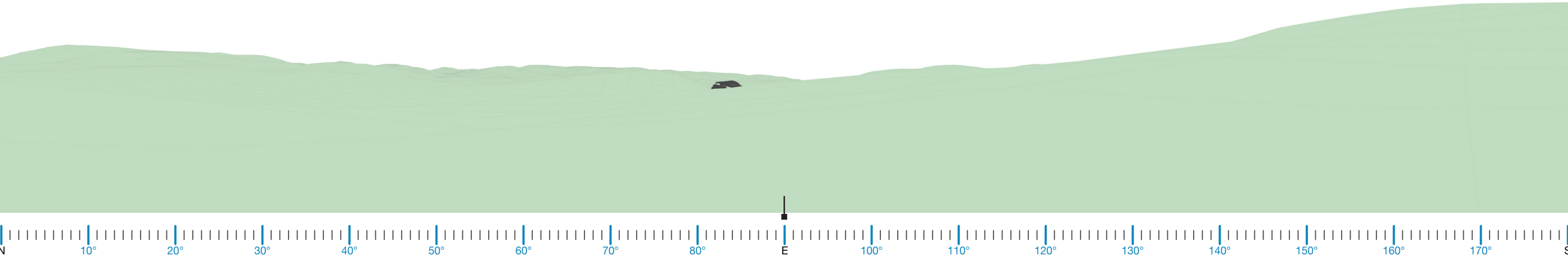


R19 Location

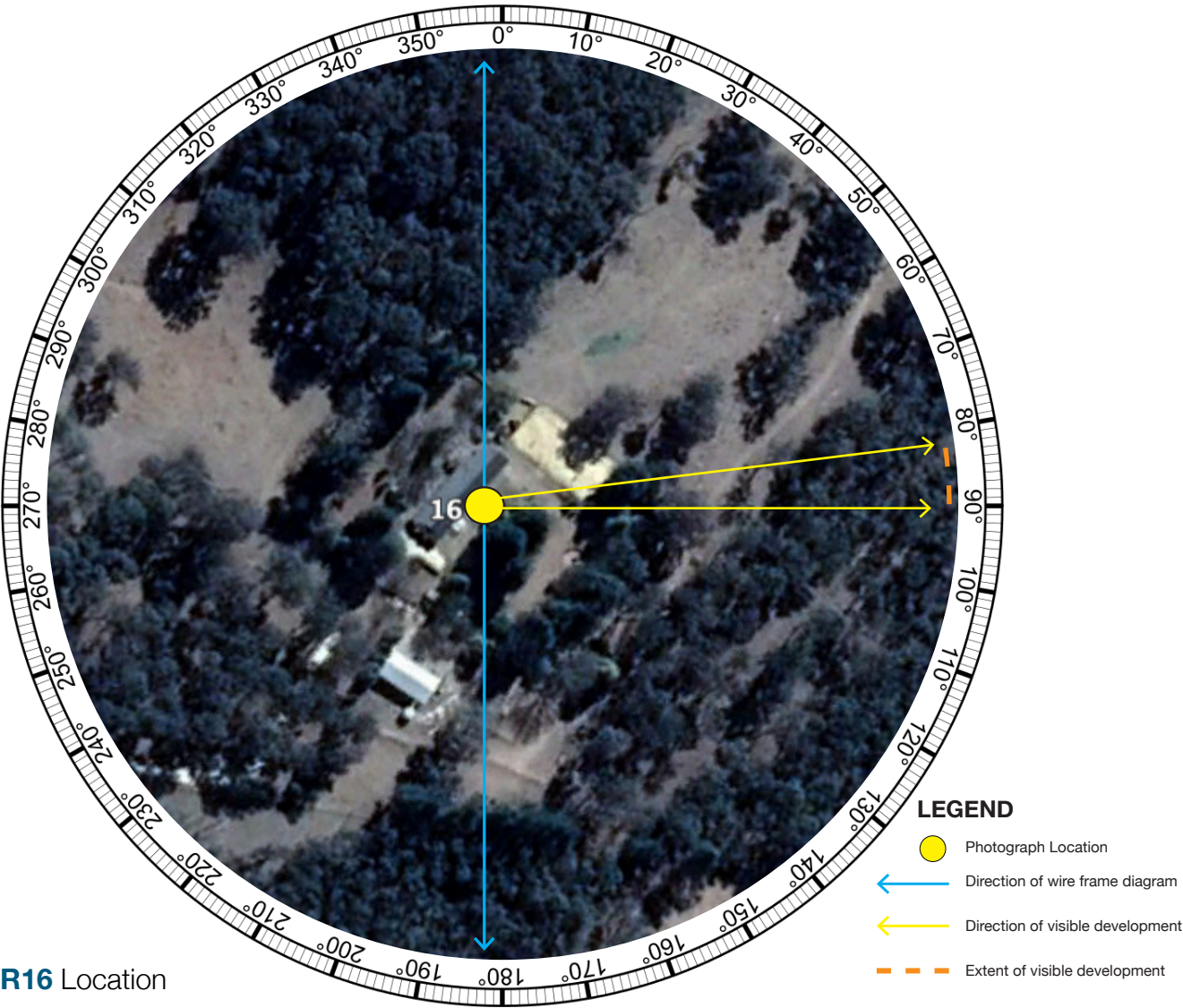
DWELLING R19		
SUMMARY OF VIEWPOINT		POTENTIAL VISUAL IMPACT
LOCATION	12253 New Engalnd Highway, Black Mountain	Views to the proposed development may likely be restricted from this viewpoint as it is concealed by dense screening vegetation surrounding the site.
COORDINATES	30°21'4.45"S 151°37'9.46"E	
ELEVATION	1370m	
VIEWING DIRECTION	Generally Southeast	The Visual Effect is assessed as Low and the resulting Visual Impact rating is Low .
DISTANCE TO SITE	2.54 km	
LAND USE	Residential	
VISUAL SENSITIVITY	HIGH	
VISUAL EFFECT	LOW	
VISUAL IMPACT	LOW	

Wireframe Diagram Analysis - Dwelling R16

Proposed View from sensitive receiver



Wireframe Diagram
*NOTE: Wireframe does not take into account vegetation, structures or other features that could fragment views of the development



R16 Location

DWELLING R16		
SUMMARY OF VIEWPOINT		POTENTIAL VISUAL IMPACT
LOCATION	861 Toms Gully Road Black Mountain	Views to the proposed development will be fragmented from this viewpoint as it is concealed by vegetation surrounding the site. The undulating topography will also help in restricting views to the development.
COORDINATES	30°22'4.32"S 151°36'38.01"E	
ELEVATION	1289m	
VIEWING DIRECTION	Generally East	
DISTANCE TO SITE	2.02 km	
LAND USE	Residential	The Visual Effect is assessed as Low and the resulting Visual Impact rating is Low .
VISUAL SENSITIVITY	HIGH	
VISUAL EFFECT	LOW	
VISUAL IMPACT	LOW	

Viewpoint Analysis - Craig Yates Memorial

Proposed View from sensitive receiver



Photograph Supplied by Others.

Craig Yates Memorial		
Summary of Viewpoint		Potential Visual Impact
Location	Craig Yates Memorial	The proposed solar farm will be visible from this location however it is likely to occupy only a small area of the broader field of view.
Coordinates	Unknown	
Elevation	Unknown	It is determined that the solar farm, although visible and a character element in the view, will not be a defining character element and therefore will not diminish the overall existing character of the view.
Viewing Direction	West	
Distance to Site	Estimated 2km	It is our opinion that the visual impact of the proposal from this location is LOW
Land Use	Rural/Memorial	
Visual Sensitivity	Moderate	
Visual Effect	Low	
Visual Impact	Low	