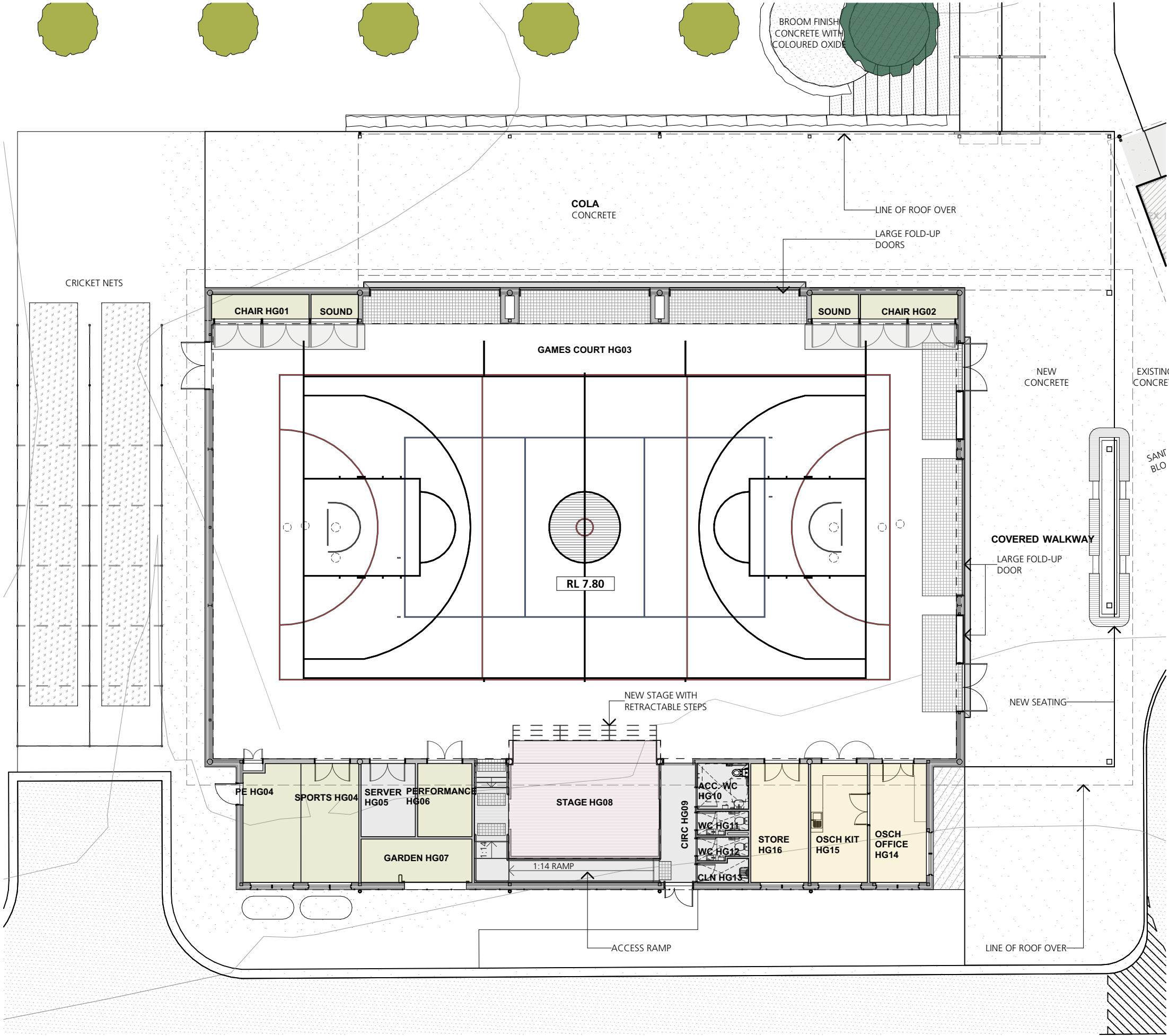



Drawing and design © SHAC Pty Ltd 2018. The signed control copy of this drawing is held by SHAC Pty Ltd. | Ref: BIM Server: BIMSERVER - BIM Server 21/9328 525 05 Lake Cathie Master date: 9/02/2019 time: 12:11 AM





Education
Public Schools

SSD Application

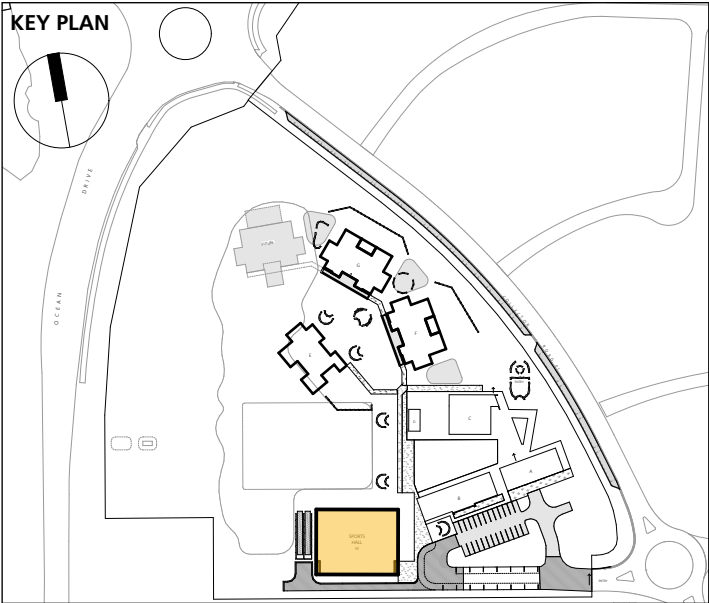
1. Dimensions are in millimetres unless otherwise shown.

2. Work to given dimensions. Do not scale from drawing.

3. Check all dimensions on site prior to construction and fabrication.

4. Bring any discrepancies to the attention of the proprietor & architect.

KEY PLAN



HALL (m ²)	CORE 14		CORE 21	
	EFSG	LCPS	EFSG	LCPS
COMMUNAL SPACE	190	840	250	798
COLA	-	295	-	61
CHAIR STORE	9	12	11	12
PE STORE	13	16	17	16
SPORTS STORE	13	17	17	17
PERFORMANCE STORE	9	10	11	10
SOUND BOARD	2	6	2	6
OSHC OFFICE	13	17	13	17
OSHC STORE	20	17	30	17
OSHC KITCHENETTE	14	17	20	17
SUBTOTAL	281	952	371	952
DEVIATION FROM ESFG	+239%		+157%	
AMENITIES (No.)	3	3	3	3
GARDEN STORE	13	12	13	12

TOILETS (No.)		CORE 14		CORE 21	
	EXISTING	EFSG	LCPS	EFSG	DIFF
MALE	10	13	26	18	8
FEMALE	10	14	26	19	7
ACCESS	3	1*	7	1*	*
TOTAL STUDENT TOILETS		34			

NOTE: ONLY LISTS TOILETS DEDICATED UNDER STUDENT SERVICES

SHAC

Nominated Architect Justin Hamilton (6160) | ABN 32 131 584 846

3928
DD2360
RevG 08.02.19

Block H - Proposed Sports Hall
Lake Cathie Public School Upgrade
1240 Ocean Drive

0m 2 4 6 8 10 1:200 @A3

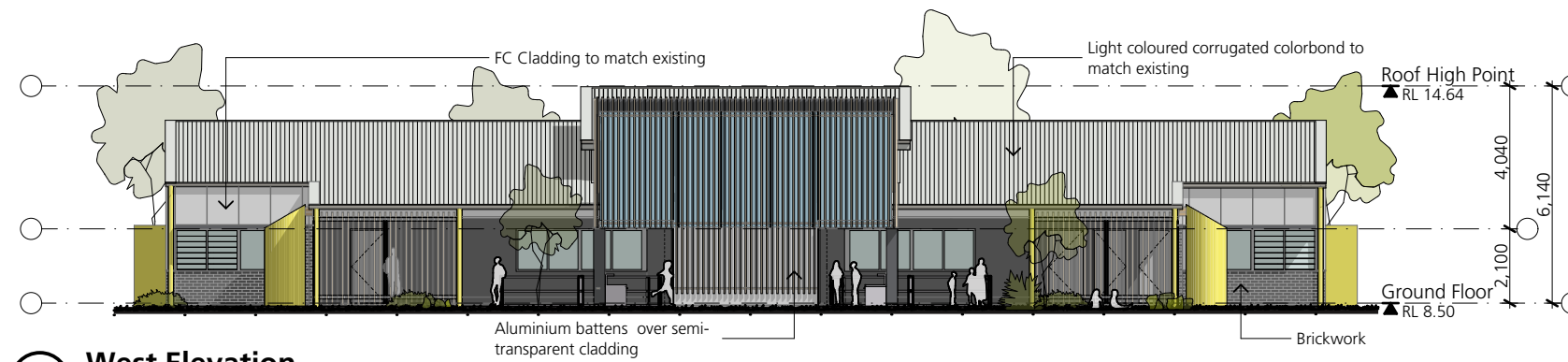
SSD Application

1. Dimensions are in millimetres unless otherwise shown.
2. Work to given dimensions. Do not scale from drawing.
3. Check all dimensions on site prior to construction and fabrication.
4. Bring any discrepancies to the attention of the proprietor & architect.

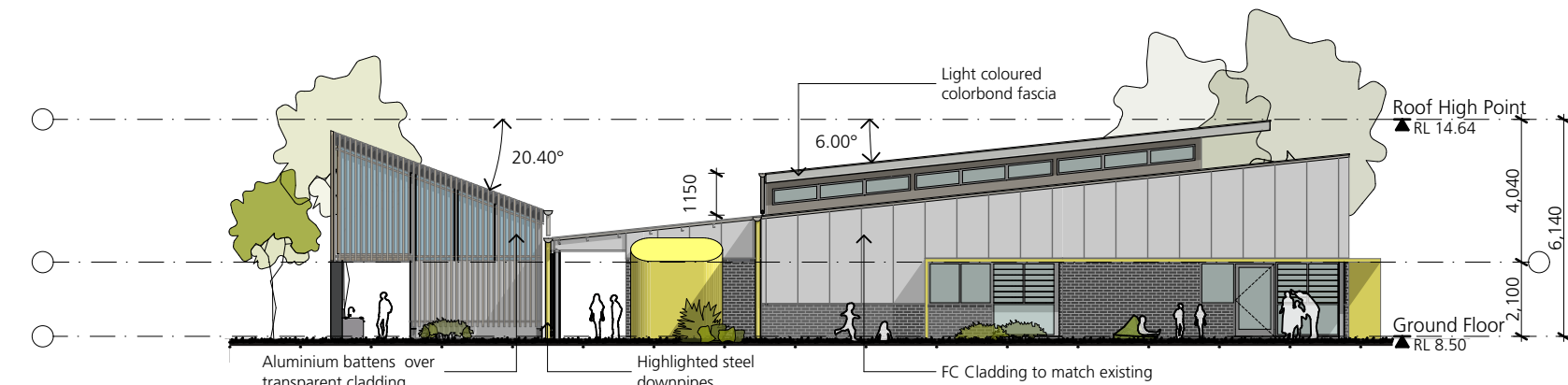


SSD Application

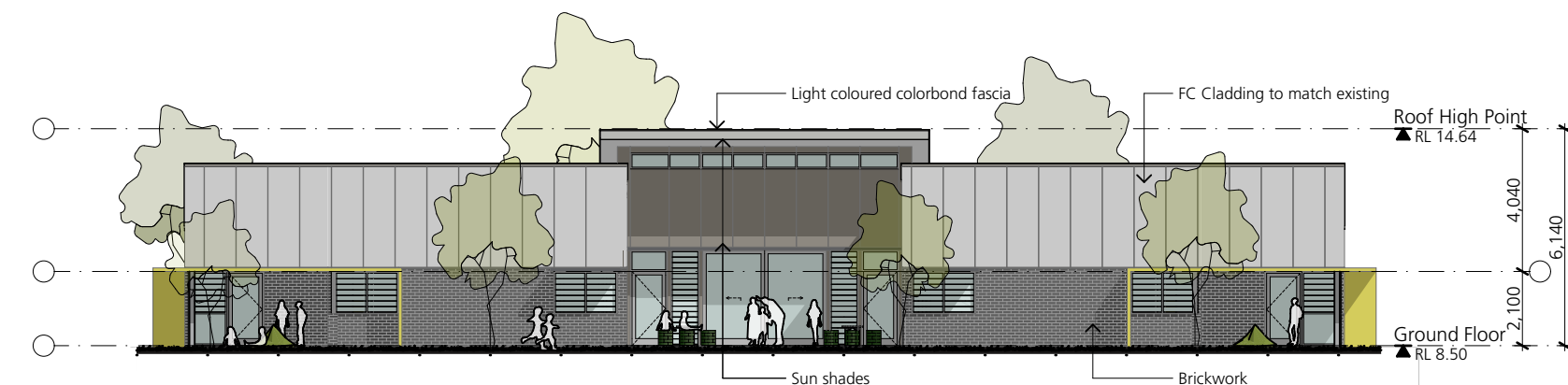
1. Dimensions are in millimetres unless otherwise shown.
2. Work to given dimensions. Do not scale from drawing.
3. Check all dimensions on site prior to construction and fabrication.
4. Bring any discrepancies to the attention of the proprietor & architect.



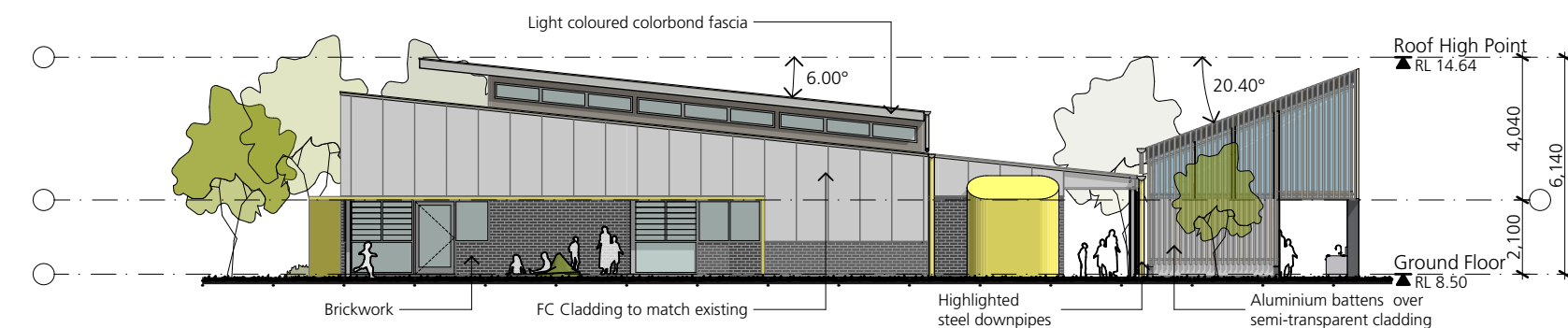
West Elevation



South Elevation



East Elevation



North Elevation