

PROJECT: SIKH GRAMMAR SCHOOL

PLANSET: CONCEPT CIVIL DESIGN

CLIENT: SIKH GRAMMAR SCHOOL AUSTRALIA



LOCALITY PLAN
N.T.S.

NSW DEPARTMENT OF PLANNING, INFRASTRUCTURE AND ENVIRONMENT

LGA: BLACKTOWN CITY COUNCIL

150-161 TALLAWONG ROAD, ROUSE HILL, NSW

LOT 42 & 43, DP 30186

DRAWING LIST		
DWG NO.	REV	DWG TITLE
GENERAL		
PS05-A000	D	COVER SHEET
PS05-A050	C	DEVELOPMENT OVERVIEW PLAN (FINAL STAGE)
CONSTRUCTION MANAGEMENT WORKS		
PS05-B300	D	SEDIMENT & EROSION CONTROL PLAN (STAGE 1)
PS05-B301	C	SEDIMENT & EROSION CONTROL PLAN (FINAL STAGE)
PS05-B310	C	SEDIMENT & EROSION CONTROL DETAILS
EARTHWORKS		
PS05-C100	D	EARTHWORKS GRADING PLAN (STAGE 1)
PS05-C101	C	EARTHWORKS GRADING PLAN (FINAL STAGE)
PS05-C501	C	EARTHWORKS CUT-FILL PLAN (FINAL STAGE)
ROADWORKS		
PS05-D100	D	ROADWORKS PLAN (STAGE 1) - TALLAWONG ROAD
PS05-D200	D	TALLAWONG ROAD (22-MRC05) LONGITUDINAL SECTION & TYPICAL CROSS SECTION
DRAINAGE WORKS		
PS05-E100	D	DRAINAGE PLAN (STAGE 1)
PS05-E101	C	DRAINAGE PLAN (FINAL STAGE)
PS05-E201	D	DRAINAGE DETAILS
PS05-E601	C	OSD CATCHMENT PLAN, MODELS & RESULTS (FINAL STAGE)
PS05-E701	C	WATER QUALITY CATCHMENT PLAN, MODELS & RESULTS (FINAL STAGE)

- NOTES:
- THIS PLAN IS FOR STATE SIGNIFICANT DEVELOPMENT APPLICATION PURPOSE AND NOT FOR CONSTRUCTION. DESIGN TO BE REVIEWED AND UPDATED FOR CONSTRUCTION CERTIFICATE.
 - ALL WORK TO BE CARRIED OUT IN ACCORDANCE WITH, AND THESE NOTES ARE TO BE READ IN CONJUNCTION WITH THE RELEVANT AUSTRALIAN STANDARDS, COUNCIL SPECIFICATIONS, AND ALL PROJECT CONSULTANT'S PLANS AND REPORTS.
 - INTERNAL SURVEY INFORMATION SHOWN BASED ON SURVEY INFORMATION PROVIDED BY PROJECT SURVEYOR.
 - LEVELS ARE TO AUSTRALIAN HEIGHT DATUM (AHD).
 - FINAL SURFACE CONTOURS ARE BASED ON PROPOSED AND EXISTING AND LIDAR SURFACE.

STATE SIGNIFICANT DEVELOPMENT APPLICATION SSDA 9210

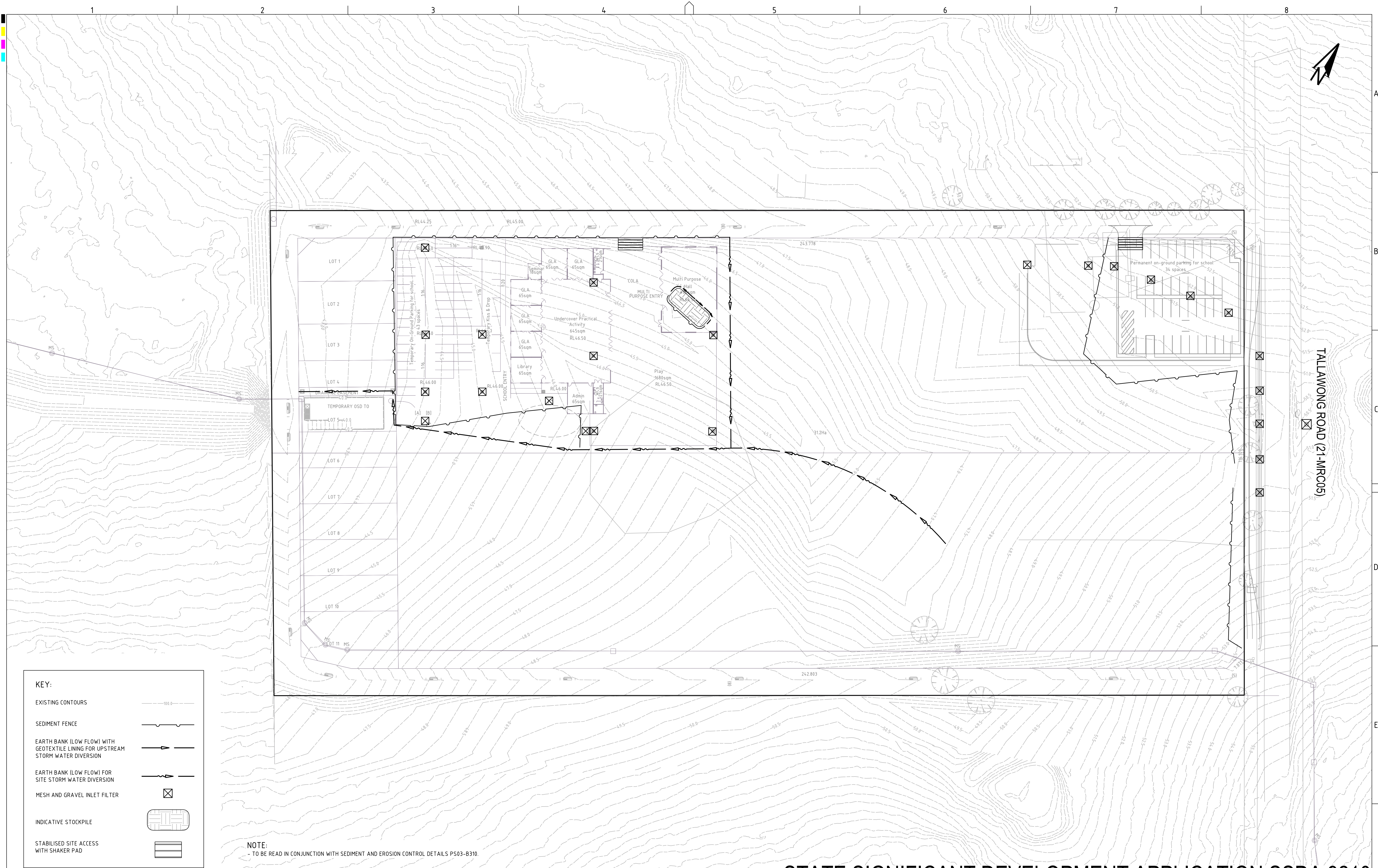
REV	DESCRIPTION	DATE	DRAWN	DESIGNED	CHECKED	APPRVD	SCALE
D	UPDATE CLIENT COMMENTS	19/07/2019	LL	CG/AVG	SL	TH	
C	MINOR AMENDMENT	15/07/2019	LL	CG/AVG	SL	TH	
B	MINOR AMENDMENT	01/07/2019	LL	CG/AVG	SL	TH	
A	INITIAL RELEASE	19/03/2019	CG/GM	CG/AVG	SL	TH	

GRID	DATUM	PROJECT MANAGER
---	---	TH
DISCLAIMER & COPYRIGHT		
This plan must not be used for construction unless signed as approved by principal certifying authority.		
All measurements in millimetres unless otherwise specified.		
This drawing must not be reproduced in whole or part without prior written consent of Martens & Associates Pty Ltd.		
(C) Copyright Martens & Associates Pty Ltd		

CLIENT
SIKH GRAMMAR SCHOOL AUSTRALIA
PROJECT NAME/PLANSET TITLE
SIKH GRAMMAR SCHOOL CONCEPT CIVIL DESIGN
150-161 TALLAWONG ROAD, ROUSE HILL, NSW LOT 42 & 43, DP 30186

	Consulting Engineers	
	Environment Water Geotechnical Civil	
Suite 201, 20 George St, Hornsby, NSW 2077 Australia Phone: (02) 9476 9999 Fax: (02) 9476 8767 Email: mail@martens.com.au Internet: www.martens.com.au		

DRAWING TITLE				
COVER SHEET				
PROJECT NO.	PLANSET NO.	RELEASE NO.	DRAWING NO.	REVISION
P1806439	PS05	R04	PS05-A000	D

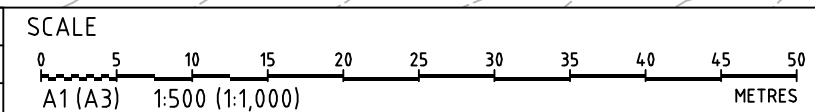


KEY:

- EXISTING CONTOURS
- SEDIMENT FENCE
- EARTH BANK (LOW FLOW) WITH GEOTEXTILE LINING FOR UPSTREAM STORM WATER DIVERSION
- EARTH BANK (LOW FLOW) FOR SITE STORM WATER DIVERSION
- MESH AND GRAVEL INLET FILTER
- INDICATIVE STOCKPILE
- STABILISED SITE ACCESS WITH SHAKER PAD

NOTE:
- TO BE READ IN CONJUNCTION WITH SEDIMENT AND EROSION CONTROL DETAILS PS03-B310.

REV	DESCRIPTION	DATE	DRAWN	DESIGNED	CHECKED	APPROVD
D	UPDATE CLIENT COMMENTS	19/07/2019	LL	CG/AVG	SL	TH
C	MINOR AMENDMENT	15/07/2019	LL	CG/AVG	SL	TH
B	MINOR AMENDMENT	01/07/2019	LL	CG/AVG	SL	TH
A	INITIAL RELEASE	19/03/2019	CG/GM	CG/AVG	SL	TH

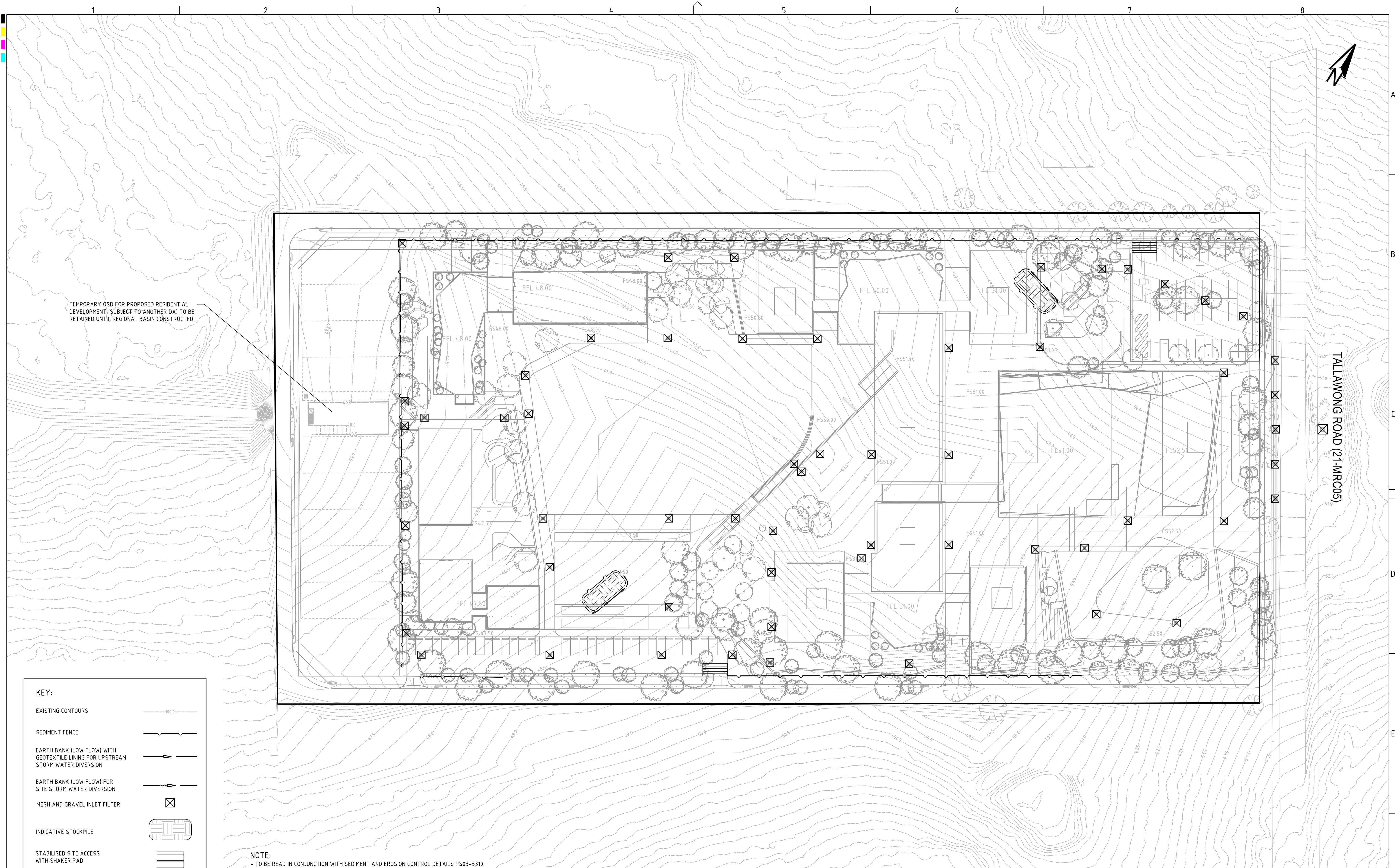


GRID
MGA
DATUM
mAHD
PROJECT MANAGER
TH
CLIENT
SIKH GRAMMAR SCHOOL AUSTRALIA
PROJECT NAME/PLANSET TITLE
SIKH GRAMMAR SCHOOL
CONCEPT CIVIL DESIGN
150-161 TALLAWONG ROAD, ROUSE HILL, NSW
LOT 42 & 43, DP 30186
DISCLAIMER & COPYRIGHT
This plan must not be used for construction unless signed as approved by principal certifying authority.
All measurements in millimetres unless otherwise specified.
This drawing must not be reproduced in whole or part without prior written consent of Martens & Associates Pty Ltd
(C) Copyright Martens & Associates Pty Ltd

martens
& Associates Pty Ltd
Consulting Engineers
Environment
Water
Geotechnical
Civil
Suite 201, 20 George St, Hornsby, NSW 2077 Australia Phone: (02) 9476 9999 Fax: (02) 9476 8767
Email: mail@martens.com.au Internet: www.martens.com.au

DRAWING TITLE				
SEDIMENT & EROSION CONTROL PLAN (STAGE 1)				
PROJECT NO.	PLANSET NO.	RELEASE NO.	DRAWING NO.	REVISION
P1806439	PS05	R04	PS05-B300	D

STATE SIGNIFICANT DEVELOPMENT APPLICATION SSDA 9210



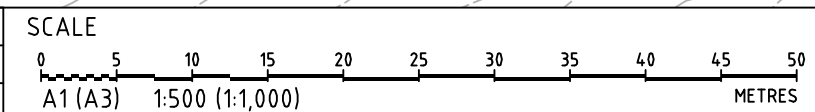
TEMPORARY OSD FOR PROPOSED RESIDENTIAL DEVELOPMENT (SUBJECT TO ANOTHER DA) TO BE RETAINED UNTIL REGIONAL BASIN CONSTRUCTED.

KEY:

- EXISTING CONTOURS
- SEDIMENT FENCE
- EARTH BANK (LOW FLOW) WITH GEOTEXTILE LINING FOR UPSTREAM STORM WATER DIVERSION
- EARTH BANK (LOW FLOW) FOR SITE STORM WATER DIVERSION
- MESH AND GRAVEL INLET FILTER
- INDICATIVE STOCKPILE
- STABILISED SITE ACCESS WITH SHAKER PAD

NOTE:
- TO BE READ IN CONJUNCTION WITH SEDIMENT AND EROSION CONTROL DETAILS PS03-B310.

REV	DESCRIPTION	DATE	DRAWN	DESIGNED	CHECKED	APPRVD
C	UPDATE CLIENT COMMENTS	19/07/2019	LL	CG/AVG	SL	TH
B	MINOR AMENDMENT	15/07/2019	LL	CG/AVG	SL	TH
A	INITIAL RELEASE	01/07/2019	LL	CG/AVG	SL	TH



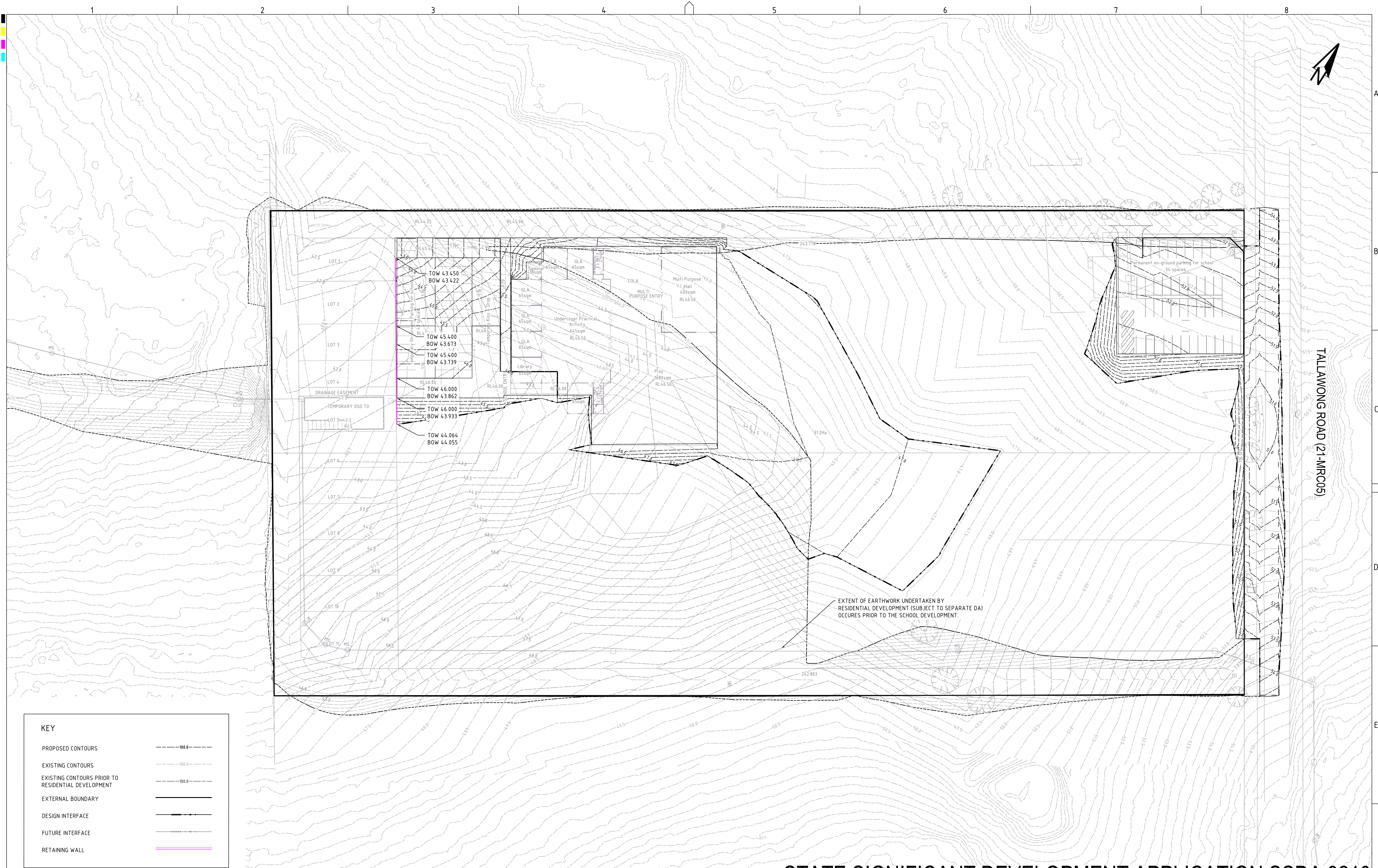
GRID	DATUM	PROJECT MANAGER	CLIENT
MGA	mAHD	TH	SIKH GRAMMAR SCHOOL AUSTRALIA
DISCLAIMER & COPYRIGHT			
This plan must not be used for construction unless signed as approved by principal certifying authority.			
All measurements in millimetres unless otherwise specified.			
This drawing must not be reproduced in whole or part without prior written consent of Martens & Associates Pty Ltd.			
(C) Copyright Martens & Associates Pty Ltd			
PROJECT NAME/PLANSET TITLE			
SIKH GRAMMAR SCHOOL			
CONCEPT CIVIL DESIGN			
150-161 TALLAWONG ROAD, ROUSE HILL, NSW			
LOT 42 & 43, DP 30186			

Consulting Engineers
Environment
Water
Geotechnical
Civil

Suite 201, 20 George St, Hornsby, NSW 2077 Australia Phone: (02) 9476 9999 Fax: (02) 9476 8767
Email: mail@martens.com.au Internet: www.martens.com.au

DRAWING TITLE				
SEDIMENT & EROSION CONTROL PLAN (FINAL STAGE)				
PROJECT NO.	PLANSET NO.	RELEASE NO.	DRAWING NO.	REVISION
P1806439	PS05	R04	PS05-B301	C

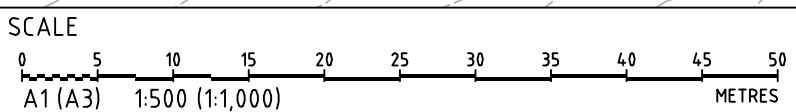
STATE SIGNIFICANT DEVELOPMENT APPLICATION SSDA 9210



KEY

PROPOSED CONTOURS	---
EXISTING CONTOURS	---
EXISTING CONTOURS PRIOR TO RESIDENTIAL DEVELOPMENT	---
EXTERNAL BOUNDARY	---
DESIGN INTERFACE	---
FUTURE INTERFACE	---
RETAINING WALL	---

REV	DESCRIPTION	DATE	DRAWN	DESIGNED	CHECKED	APPRVD
D	UPDATE CLIENT COMMENTS	19/07/2019	LL	CG/AVG	SL	TH
C	MINOR AMENDMENT	15/07/2019	LL	CG/AVG	SL	TH
B	MINOR AMENDMENT	01/07/2019	LL	CG/AVG	SL	TH
A	INITIAL RELEASE	19/03/2019	CG/GM	CG/AVG	SL	TH



GRID	DATUM	PROJECT MANAGER	CLIENT
MGA	mAHD	TH	SIKH GRAMMAR SCHOOL AUSTRALIA

DISCLAIMER & COPYRIGHT

This plan must not be used for construction unless signed as approved by principal certifying authority.

All measurements in millimetres unless otherwise specified.

This drawing must not be reproduced in whole or part without prior written consent of Martens & Associates Pty Ltd.

(C) Copyright Martens & Associates Pty Ltd

PROJECT NAME/PLANSET TITLE
SIKH GRAMMAR SCHOOL
CONCEPT CIVIL DESIGN
150-161 TALLAWONG ROAD, ROUSE HILL, NSW
LOT 42 & 43, DP 30786

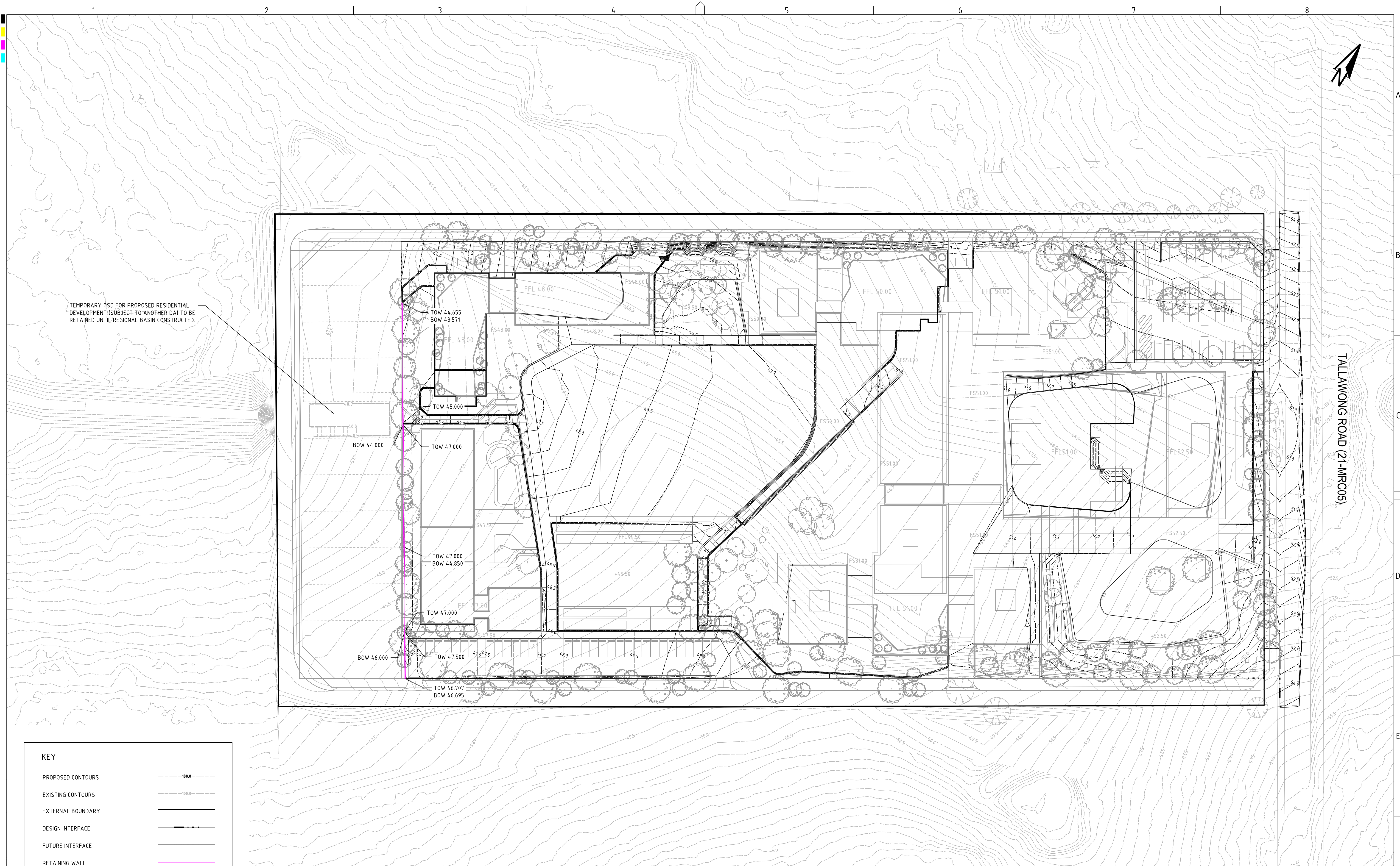
martens
& Associates Pty Ltd

Consulting Engineers
Environment
Water
Geotechnical
Civil

Suite 201, 20 George St, Hornsby, NSW 2077 Australia Phone: (02) 9476 9999 Fax: (02) 9476 8767
Email: mail@martens.com.au Internet: www.martens.com.au

DRAWING TITLE				
EARTHWORKS GRADING PLAN (STAGE 1)				
PROJECT NO.	PLANSET NO.	RELEASE NO.	DRAWING NO.	REVISION
P1806439	PS05	R04	PS05-C100	D

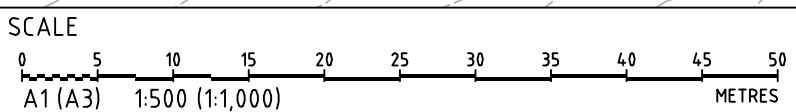
STATE SIGNIFICANT DEVELOPMENT APPLICATION SSDA 9210



TEMPORARY OSD FOR PROPOSED RESIDENTIAL DEVELOPMENT (SUBJECT TO ANOTHER DA) TO BE RETAINED UNTIL REGIONAL BASIN CONSTRUCTED.

KEY	
PROPOSED CONTOURS	--- 100.0 ---
EXISTING CONTOURS	--- 100.0 ---
EXTERNAL BOUNDARY	---
DESIGN INTERFACE	---
FUTURE INTERFACE	---
RETAINING WALL	---

REV	DESCRIPTION	DATE	DRAWN	DESIGNED	CHECKED	APPRVD
C	UPDATE CLIENT COMMENTS	19/07/2019	LL	CG/AVG	SL	TH
B	MINOR AMENDMENT	15/07/2019	LL	CG/AVG	SL	TH
A	INITIAL RELEASE	01/07/2019	LL	CG/AVG	SL	TH



GRID	DATUM	PROJECT MANAGER	CLIENT
MGA	mAHD	TH	SIKH GRAMMAR SCHOOL AUSTRALIA
DISCLAIMER & COPYRIGHT			
This plan must not be used for construction unless signed as approved by principal certifying authority.			
All measurements in millimetres unless otherwise specified.			
This drawing must not be reproduced in whole or part without prior written consent of Martens & Associates Pty Ltd.			
(C) Copyright Martens & Associates Pty Ltd			

PROJECT NAME/PLANSET TITLE
SIKH GRAMMAR SCHOOL
CONCEPT CIVIL DESIGN
150-161 TALLAWONG ROAD, ROUSE HILL, NSW
LOT 42 & 43, DP 30186

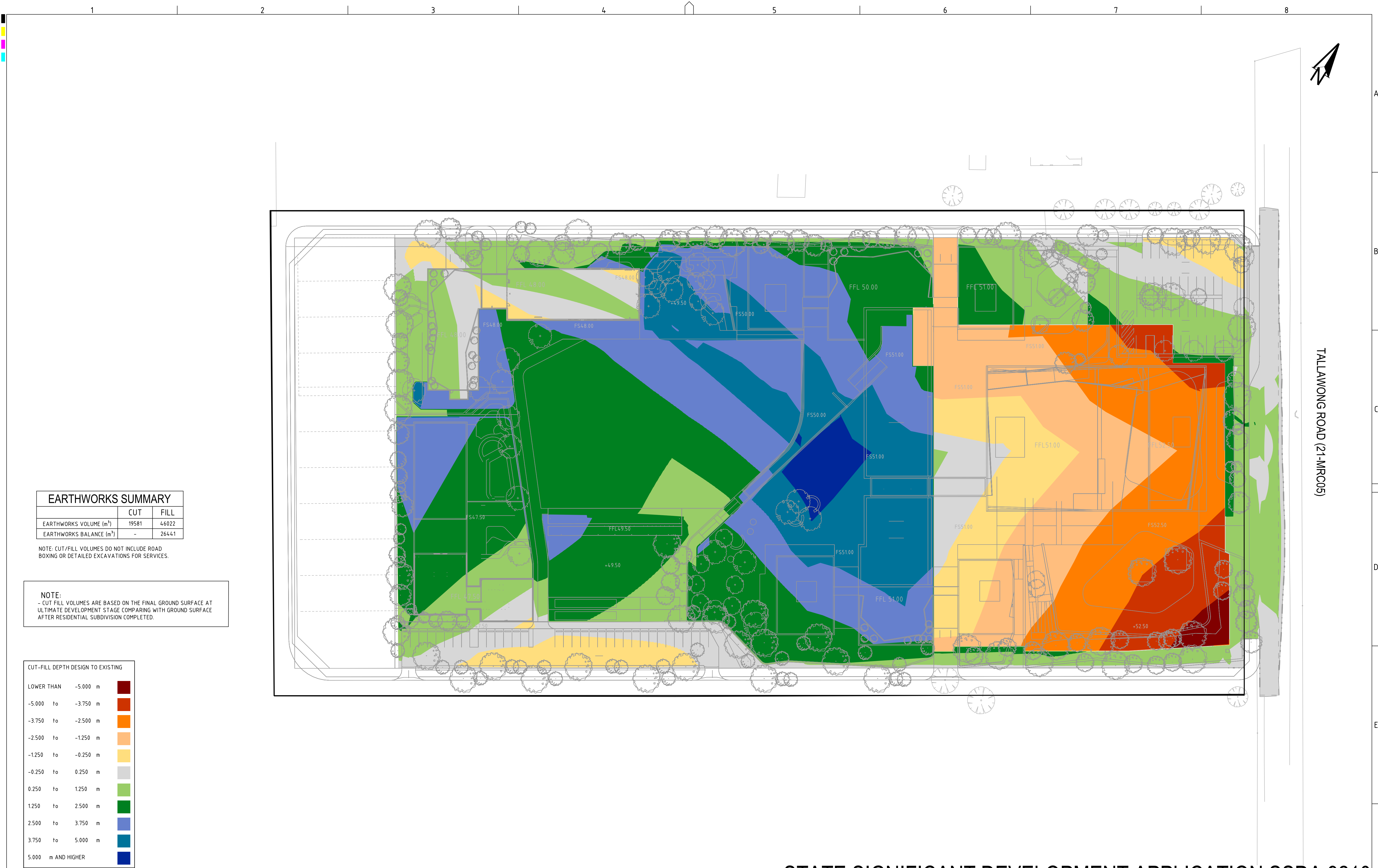
martens
& Associates Pty Ltd

Consulting Engineers
Environment
Water
Geotechnical
Civil

Suite 201, 20 George St, Hornsby, NSW 2077 Australia Phone: (02) 9476 9999 Fax: (02) 9476 8767
Email: mail@martens.com.au Internet: www.martens.com.au

DRAWING TITLE				
EARTHWORKS GRADING PLAN (FINAL STAGE)				
PROJECT NO.	PLANSET NO.	RELEASE NO.	DRAWING NO.	REVISION
P1806439	PS05	R04	PS05-C101	C

STATE SIGNIFICANT DEVELOPMENT APPLICATION SSSDA 9210



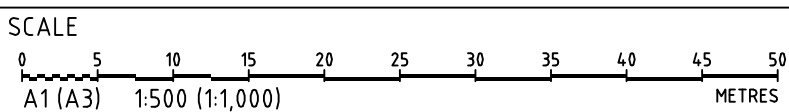
EARTHWORKS SUMMARY		
	CUT	FILL
EARTHWORKS VOLUME (m³)	19581	46022
EARTHWORKS BALANCE (m³)	-	26441

NOTE: CUT/FILL VOLUMES DO NOT INCLUDE ROAD BOXING OR DETAILED EXCAVATIONS FOR SERVICES.

NOTE:
- CUT/FILL VOLUMES ARE BASED ON THE FINAL GROUND SURFACE AT ULTIMATE DEVELOPMENT STAGE COMPARING WITH GROUND SURFACE AFTER RESIDENTIAL SUBDIVISION COMPLETED.

CUT-FILL DEPTH DESIGN TO EXISTING		
LOWER THAN	-5.000 m	
-5.000 to	-3.750 m	
-3.750 to	-2.500 m	
-2.500 to	-1.250 m	
-1.250 to	-0.250 m	
-0.250 to	0.250 m	
0.250 to	1.250 m	
1.250 to	2.500 m	
2.500 to	3.750 m	
3.750 to	5.000 m	
5.000 m AND HIGHER		

REV	DESCRIPTION	DATE	DRAWN	DESIGNED	CHECKED	APPRVD
C	UPDATE CLIENT COMMENTS	19/07/2019	LL	CG/AVG	SL	TH
B	MINOR AMENDMENT	15/07/2019	LL	CG/AVG	SL	TH
A	INITIAL RELEASE	01/07/2019	LL	CG/AVG	SL	TH



GRID	DATUM	PROJECT MANAGER	CLIENT
MGA	mAHD	TH	SIKH GRAMMAR SCHOOL AUSTRALIA
DISCLAIMER & COPYRIGHT			
This plan must not be used for construction unless signed as approved by principal certifying authority.			
All measurements in millimetres unless otherwise specified.			
This drawing must not be reproduced in whole or part without prior written consent of Martens & Associates Pty Ltd.			
(C) Copyright Martens & Associates Pty Ltd			

PROJECT NAME/PLANSET TITLE
SIKH GRAMMAR SCHOOL
CONCEPT CIVIL DESIGN
150-161 TALLAWONG ROAD, ROUSE HILL, NSW
LOT 42 & 43, DP 30186

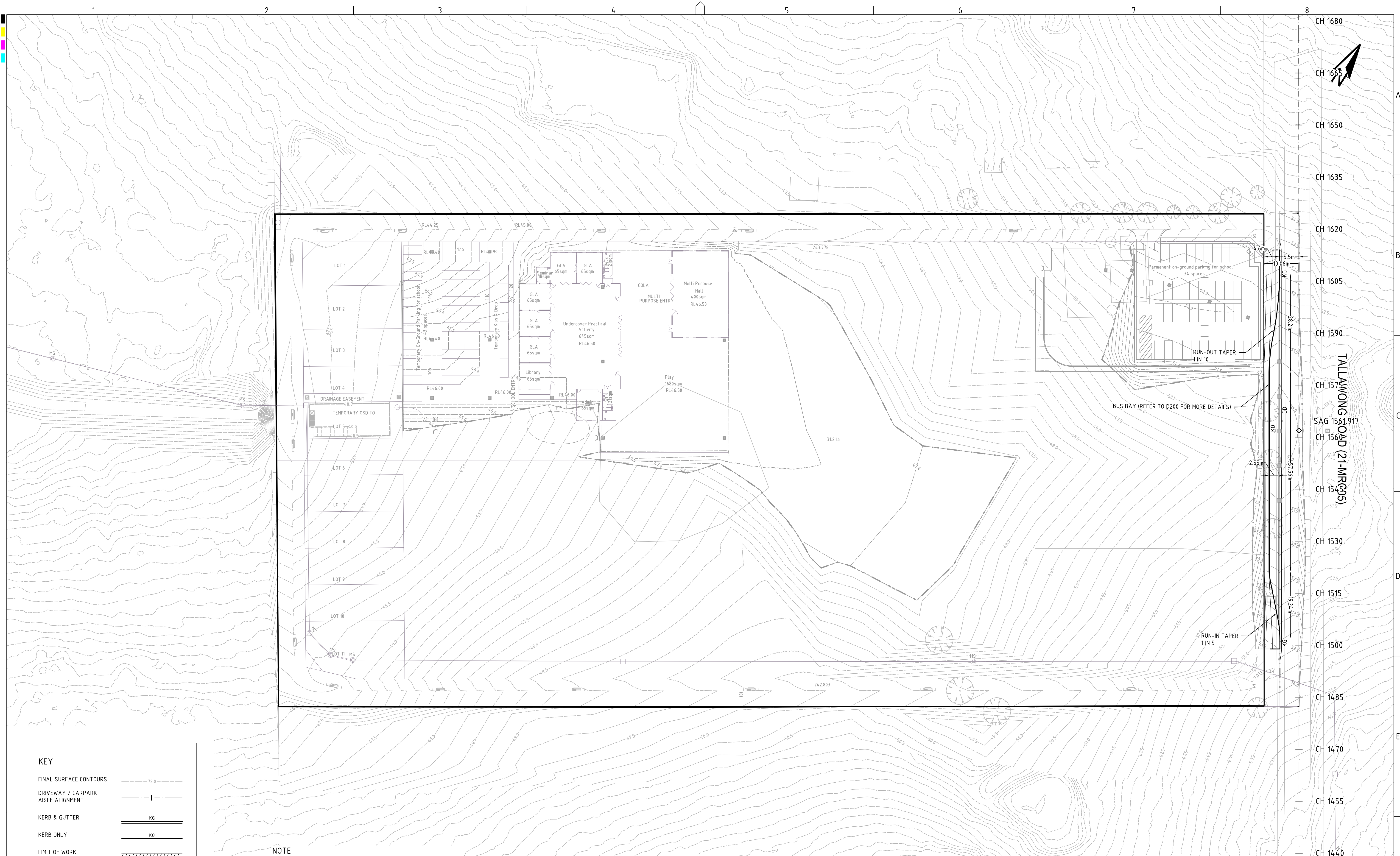
Consulting Engineers

Environment
Water
Geotechnical
Civil

Suite 201, 20 George St, Hornsby, NSW 2077 Australia Phone: (02) 9476 9999 Fax: (02) 9476 8767
Email: mail@martens.com.au Internet: www.martens.com.au

DRAWING TITLE				
EARTHWORKS CUT-FILL PLAN (FINAL STAGE)				
PROJECT NO.	PLANSET NO.	RELEASE NO.	DRAWING NO.	REVISION
P1806439	PS05	R04	PS05-C501	C

STATE SIGNIFICANT DEVELOPMENT APPLICATION SSDA 9210



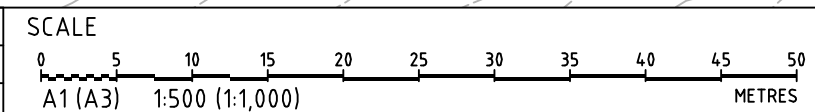
KEY

FINAL SURFACE CONTOURS	---
DRIVEWAY / CARPARK AISLE ALIGNMENT	---
KERB & GUTTER	KG
KERB ONLY	KO
LIMIT OF WORK	
SITE BOUNDARY	---

NOTE:

- FINAL SURFACE CONTOURS ARE BASED ON PROPOSED, EXISTING AND LIDAR SURFACES.

REV	DESCRIPTION	DATE	DRAWN	DESIGNED	CHECKED	APPRVD
D	UPDATE CLIENT COMMENTS	19/07/2019	LL	CG/AVG	SL	TH
C	MINOR AMENDMENT	15/07/2019	LL	CG/AVG	SL	TH
B	MINOR AMENDMENT	01/07/2019	LL	CG/AVG	SL	TH
A	INITIAL RELEASE	19/03/2019	CG/GM	CG/AVG	SL	TH



GRID	DATUM	PROJECT MANAGER	CLIENT
MGA	mAHD	TH	SIKH GRAMMAR SCHOOL AUSTRALIA
DISCLAIMER & COPYRIGHT			
This plan must not be used for construction unless signed as approved by principal certifying authority.			
All measurements in millimetres unless otherwise specified.			
This drawing must not be reproduced in whole or part without prior written consent of Martens & Associates Pty Ltd			
(C) Copyright Martens & Associates Pty Ltd			

PROJECT NAME/PLANSET TITLE
SIKH GRAMMAR SCHOOL
CONCEPT CIVIL DESIGN
150-161 TALLAWONG ROAD, ROUSE HILL, NSW
LOT 42 & 43, DP 30786

martens
& Associates Pty Ltd

Consulting Engineers
Environment
Water
Geotechnical
Civil

Suite 201, 20 George St, Hornsby, NSW 2077 Australia Phone: (02) 9476 9999 Fax: (02) 9476 8767
Email: mail@martens.com.au Internet: www.martens.com.au

DRAWING TITLE				
ROADWORKS PLAN (STAGE 1) - TALLAWONG ROAD				
PROJECT NO.	PLANSET NO.	RELEASE NO.	DRAWING NO.	REVISION
P1806439	PS05	R04	PS05-D100	D

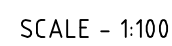
STATE SIGNIFICANT DEVELOPMENT APPLICATION SSDA 9210

PRINTED: 29/07/2019 USER: L11

A1 / A3 LANDSCAPE (A1LC_v02.0.01)

DRAWING ID: P1806439-PS05-R04-D100

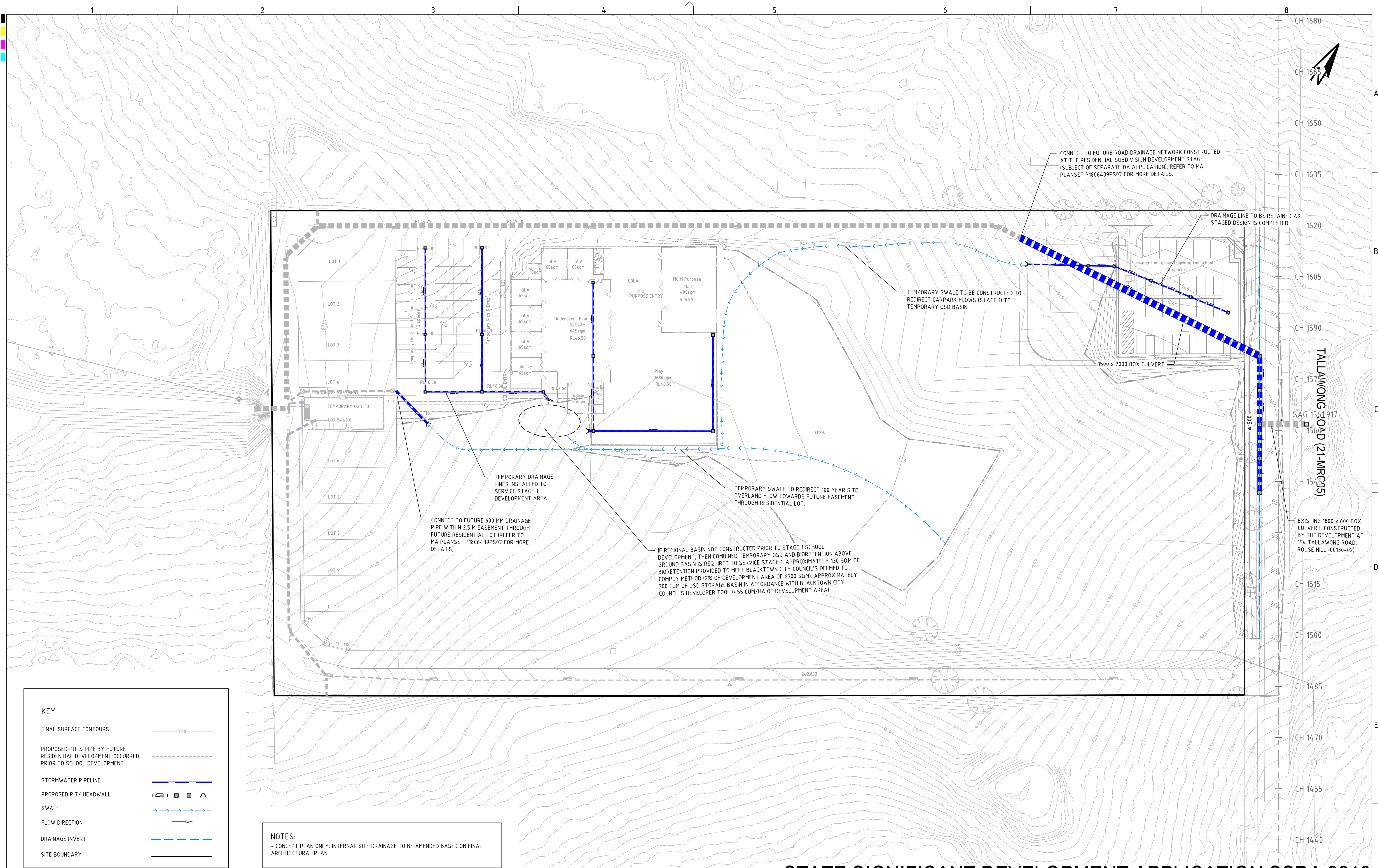
0 5 10 15 20 25 30 35 40 45 50 METRES



DESIGN SURFACE LEVELS
EXISTING SURFACE LEVELS
CUT / FILL DEPTH
CHAINAGE

DRAWING TITLE				
TALLAWONG ROAD (22-MRC05) LONGITUDINAL SECTION & TYPICAL CROSS SECTION				
PROJECT NO. P1806439	PLANSET NO. PS05	RELEASE NO. R04	DRAWING NO. PS05-D200	REVISION D

STATE SIGNIFICANT DEVELOPMENT APPLICATION SSDA 9210



KEY

FINAL SURFACE CONTOURS

PROPOSED PIT & PIPE BY FUTURE RESIDENTIAL DEVELOPMENT OCCURRED PRIOR TO SCHOOL DEVELOPMENT

STORMWATER PIPELINE

PROPOSED PIT/ HEADWALL

SWALE

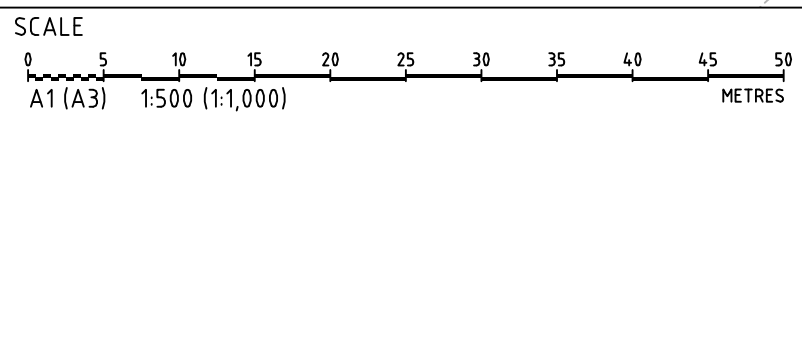
FLOW DIRECTION

DRAINAGE INVERT

SITE BOUNDARY

NOTES:
- CONCEPT PLAN ONLY. INTERNAL SITE DRAINAGE TO BE AMENDED BASED ON FINAL ARCHITECTURAL PLAN

REV	DESCRIPTION	DATE	DRAWN	DESIGNED	CHECKED	APPROV
D	UPDATE CLIENT COMMENTS	19/07/2019	LL	CG/AVG	SL	TH
C	MINOR AMENDMENT	15/07/2019	LL	CG/AVG	SL	TH
B	MINOR AMENDMENT	01/07/2019	LL	CG/AVG	SL	TH
A	INITIAL RELEASE	19/03/2019	CG/GM	CG/AVG	SL	TH



GRID
MGA

DATUM
mAHd

PROJECT MANAGER
TH

CLIENT
SIKH GRAMMAR SCHOOL AUSTRALIA

PROJECT NAME/PLANSET TITLE
SIKH GRAMMAR SCHOOL
CONCEPT CIVIL DESIGN

150-161 TALLAWONG ROAD, ROUSE HILL, NSW
LOT 42 & 43, DP 30186

DISCLAIMER & COPYRIGHT
This plan must not be used for construction unless signed as approved by principal certifying authority.
All measurements in millimetres unless otherwise specified.
This drawing must not be reproduced in whole or part without prior written consent of Martens & Associates Pty Ltd.
(C) Copyright Martens & Associates Pty Ltd

Consulting Engineers
Environment
Water
Geotechnical
Civil

Suite 201, 20 George St, Hornsby, NSW 2077 Australia Phone: (02) 9476 9999 Fax: (02) 9476 8767
Email: mail@martens.com.au Internet: www.martens.com.au

DRAWING TITLE
DRAINAGE PLAN (STAGE 1)

PROJECT NO.
P1806439

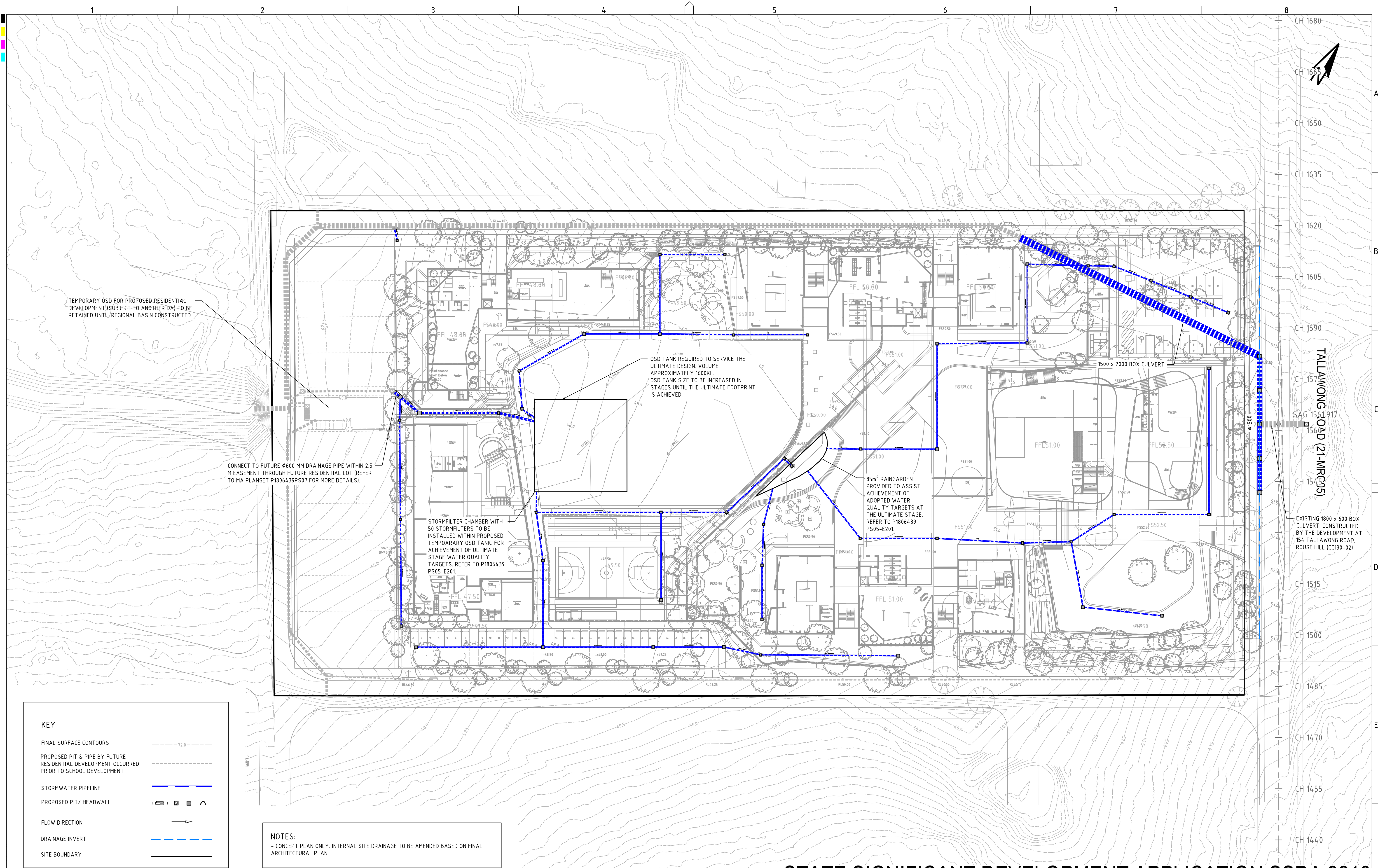
PLANSET NO.
PS05

RELEASE NO.
R04

DRAWING NO.
PS05-E100

REVISION
D

STATE SIGNIFICANT DEVELOPMENT APPLICATION SSDA 9210

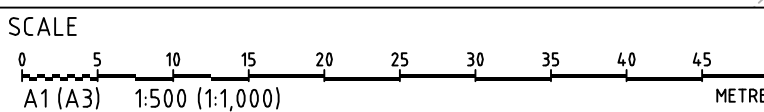


KEY

- FINAL SURFACE CONTOURS
- PROPOSED PIT & PIPE BY FUTURE RESIDENTIAL DEVELOPMENT OCCURRED PRIOR TO SCHOOL DEVELOPMENT
- STORMWATER PIPELINE
- PROPOSED PIT/ HEADWALL
- FLOW DIRECTION
- DRAINAGE INVERT
- SITE BOUNDARY

NOTES:
- CONCEPT PLAN ONLY. INTERNAL SITE DRAINAGE TO BE AMENDED BASED ON FINAL ARCHITECTURAL PLAN

REV	DESCRIPTION	DATE	DRAWN	DESIGNED	CHECKED	APPRVD
C	UPDATE CLIENT COMMENTS	19/07/2019	LL	CG/AVG	SL	TH
B	MINOR AMENDMENT	15/07/2019	LL	CG/AVG	SL	TH
A	INITIAL RELEASE	01/07/2019	LL	CG/AVG	SL	TH



GRID	DATUM	PROJECT MANAGER	CLIENT
MGA	mAHD	TH	SIKH GRAMMAR SCHOOL AUSTRALIA
DISCLAIMER & COPYRIGHT			
This plan must not be used for construction unless signed as approved by principal certifying authority.			
All measurements in millimetres unless otherwise specified.			
This drawing must not be reproduced in whole or part without prior written consent of Martens & Associates Pty Ltd			
(C) Copyright Martens & Associates Pty Ltd			
PROJECT NAME/PLANSET TITLE			
SIKH GRAMMAR SCHOOL			
CONCEPT CIVIL DESIGN			
150-161 TALLAWONG ROAD, ROUSE HILL, NSW			
LOT 42 & 43, DP 30786			

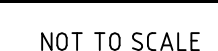
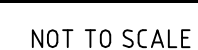
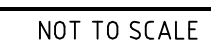
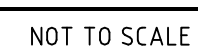
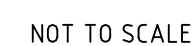
Consulting Engineers

Environment
Water
Geotechnical
Civil

Suite 201, 20 George St, Hornsby, NSW 2077 Australia Phone: (02) 9476 9999 Fax: (02) 9476 8767
Email: mail@martens.com.au Internet: www.martens.com.au

DRAWING TITLE				
DRAINAGE PLAN (FINAL STAGE)				
PROJECT NO.	PLANSET NO.	RELEASE NO.	DRAWING NO.	REVISION
P1806439	PS05	R04	PS05-E101	C

STATE SIGNIFICANT DEVELOPMENT APPLICATION SSDA 9210



A1 / A3 LANDSCAPE (A1LC v02.0.01)

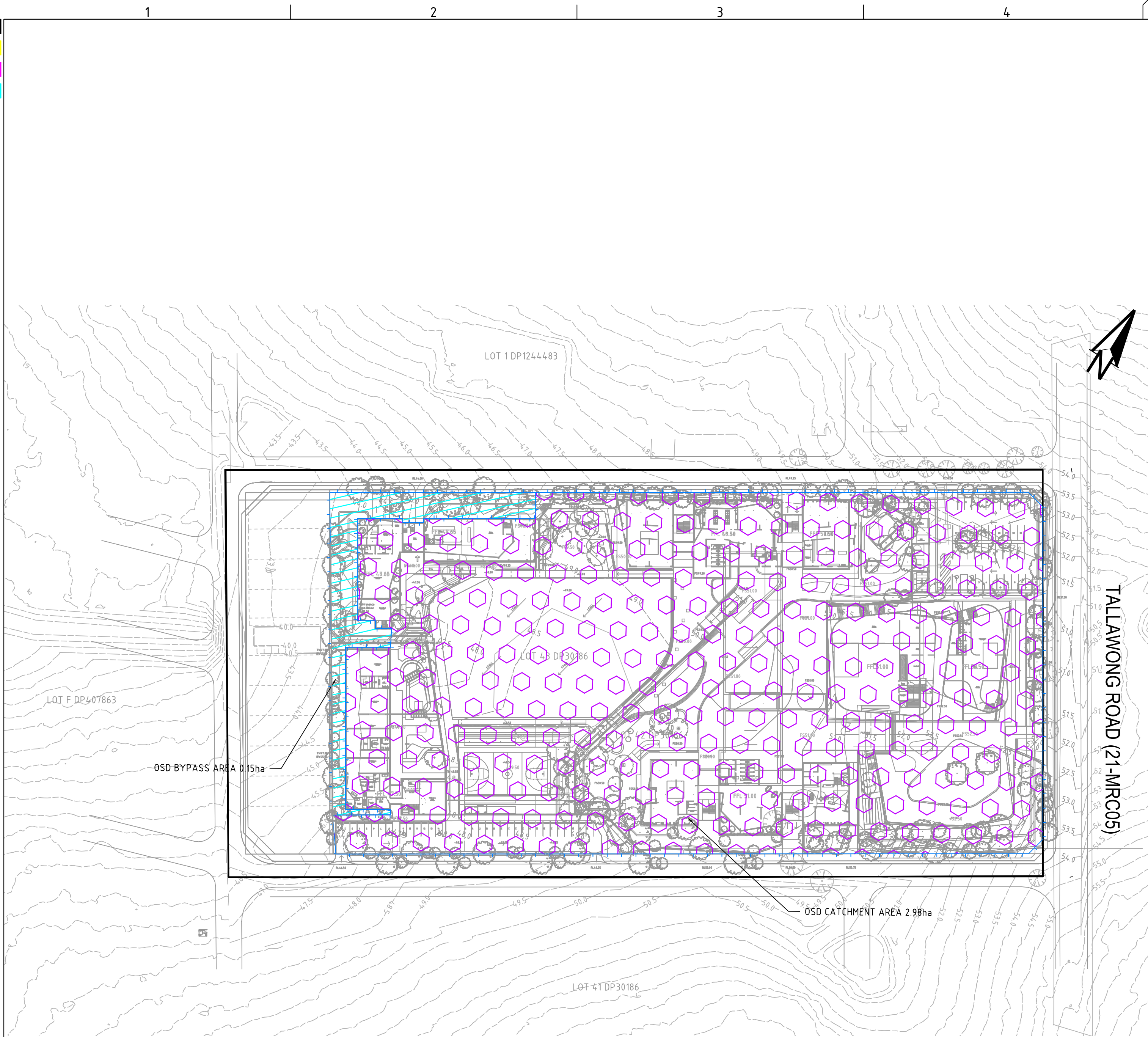
DISCLAIMER & COPYRIGHT
This plan must not be used for construction unless signed as approved by principal certifying authority.
All measurements in millimetres unless otherwise specified.
This drawing must not be reproduced in whole or part without prior written consent of Martens & Associates Pty Ltd.
(C) Copyright Martens & Associates Pty Ltd

Suite 201, 20 George St, Hornsby, NSW 2077 Australia Phone: (02) 9476 9999 Fax: (02) 9476 8767
Email: mail@martens.com.au Internet: www.martens.com.au

PROJECT NO.	PLANSET NO.	RELEASE NO.	DRAWING NO.	REVISION
P1806439	PS05	R04	PS05-E201	D

DRAWING ID: P1806439-PS05-R04-E201

STATE SIGNIFICANT DEVELOPMENT APPLICATION SSSA 9210



POST-DEVELOPMENT CATCHMENT
SCALE: 1:1000

Project Details:

Project Title	School
Address	151-161 Tallawong Road
Reference Number	6439

General Site Data:

Site Area (m ²)	31291 m ²
Area Draining to OSD (m ²)	29810 m ²

On-Site Detention Data:

OSD Location	Below Ground
OSD Discharge Location	
RL of Bottom of OSD Storage Area	44.100
RL of Top of OSD Storage Area	47.000
Length of Emergency Overflow Weir (m)	4.80 m

Filter Cartridges:

Will filter cartridges be used to manage water quality?	Yes
Design flow from Filter Cartridges (L/s)	80.00 L/s
Filter Cartridges flow with 100 Year ARI Head (L/s)	136.42 L/s

Discharge Data:

RL of 1.5 Year ARI Orifice Centreline	44.150
Number of Orifices	1
RL of 100 Year ARI Orifice Centreline	44.200
Number of Orifices	1
RL of Invert of Discharge to Council Drainage Pit	38.670

BCC DEVELOPER'S TOOL INPUTS

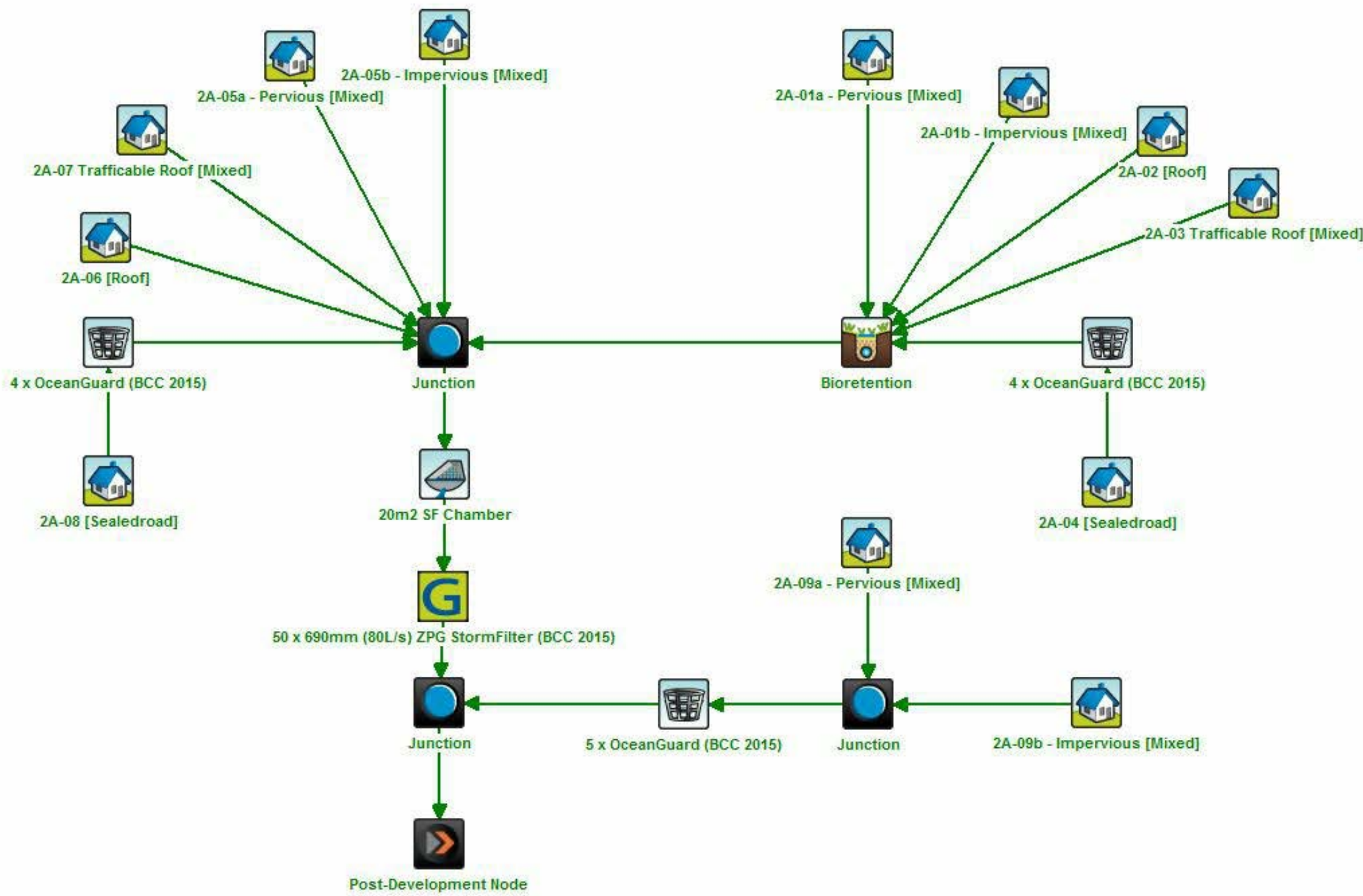
Below Ground OSD Summary with calculated values	
Site:	
Site Area	31291 m ²
Site Area NOT Draining to OSD	1481 m ²
Reduced Levels (AHD):	
RL of Top of Tank	47
RL of Bottom of OSD Tank	44.1
RL of 1.5 Year ARI Overflow Weir	45.82
RL of Emergency Overflow Weir	46.71
RL of 1.5 Year ARI Orifice Centreline	44.15
RL of 100 Year ARI Orifice Centreline	44.2
RL of Invert of Discharge to Council Drainage Pit	38.67
Minium RL of Garage Floor	0
Minium RL of House Floor	47.09
OSD Volume:	
Required Storage BELOW 1.5 Year ARI Overflow Weir	938.7 m ³
Required Storage BELOW Emergency Overflow Weir	1423.7 m ³
Discharge Details:	
Using Filter Cartridges to Manage Water Quality	Yes
Discharge Location	
Length of Emergency Overflow Weir	4.80 m
Maximum 1.5 Year ARI Site Discharge	116.28 L/s
1.5 Year ARI Orifice Discharge	36.28 L/s
Maximum 100 Year ARI Site Discharge	511.59 L/s
100 Year ARI Orifice Discharge	375.17 L/s
Filter Cartridges design flow	80.00 L/s
Filter Cartridges Discharge with Additional Head	136.42 L/s
Orifice Details:	
Number of 1.5 Year ARI Orifices	1
Number of 100 Year ARI Orifices	1
1.5 Year ARI Orifice Size (mm)	115.0 mm
100 Year ARI Orifice Size (mm)	334.0 mm
Notifications:	
Access gates to be provided such that the maximum reach from any point in the tank to the nearest grate is 6.0m.	

BCC DEVELOPER'S TOOL OUTPUTS

STATE SIGNIFICANT DEVELOPMENT APPLICATION SSDA 9210



MUSIC CATCHMENT PLAN (P1806439MUS04V02)
SCALE: 1:1000



MUSIC MODEL LAYOUT (P1806439MUS04V02)

Treatment Train Effectiveness - Post-Development Node			
	Sources	Residual Load	% Reduction
Flow (ML/yr)	17.2	17	1.1
Total Suspended Solids (kg/yr)	2190	323	85.2
Total Phosphorus (kg/yr)	4.45	1.45	67.4
Total Nitrogen (kg/yr)	36.9	19.7	46.5
Gross Pollutants (kg/yr)	389	0.191	100

MUSIC MODEL RESULT (P1806439MUS04V02)

MUSIC CATCHMENTS (P1806439MUS04V02)				
KEY	MUSIC NODE		AREA (ha)	% PAVED
	2A-01		0.7	78%
	2A-02		0.65	100%
	2A-03		0.1	100%
	2A-04		0.13	100%
	2A-05		0.99	17%
	2A-06		0.25	100%
	2A-07		0.06	100%
	2A-08		0.11	100%
	2A-09		0.15	12%
		TOTAL AREA	3.13	= 100% OF TOTAL AREA
		TOTAL IMPERVIOUS AREA	2.02	= %65 OF TOTAL AREA
		TOTAL PERVIOUS AREA	1.11	= %35 OF TOTAL AREA

STATE SIGNIFICANT DEVELOPMENT APPLICATION SSDA 9210

REV	DESCRIPTION	DATE	DRAWN	DESIGNED	CHECKED	APPRVD
C	UPDATE CLIENT COMMENTS	19/07/2019	LL	CG/AVG	SL	TH
B	MINOR AMENDMENT	15/07/2019	LL	CG/AVG	SL	TH
A	INITIAL RELEASE	01/07/2019	LL	CG/AVG	SL	TH

SCALE
0 10 20 30 40 50 60 70 80 90 100
A1 (A3) 1:1,000 (1:2,000) METRES

GRID
MGA
DATUM
mAHD
PROJECT MANAGER
TH
DISCLAIMER & COPYRIGHT
This plan must not be used for construction unless signed as approved by principal certifying authority.
All measurements in millimetres unless otherwise specified.
This drawing must not be reproduced in whole or part without prior written consent of Martens & Associates Pty Ltd.
(C) Copyright Martens & Associates Pty Ltd

CLIENT
SIKH GRAMMAR SCHOOL AUSTRALIA
PROJECT NAME/PLANSET TITLE
SIKH GRAMMAR SCHOOL
CONCEPT CIVIL DESIGN
150-161 TALLAWONG ROAD, ROUSE HILL, NSW
LOT 42 & 43, DP 30186

Consulting Engineers
Environment
Water
Geotechnical
Civil
Suite 201, 20 George St, Hornsby, NSW 2077 Australia Phone: (02) 9476 9999 Fax: (02) 9476 8767
Email: mail@martens.com.au Internet: www.martens.com.au

DRAWING TITLE				
WATER QUALITY CATCHMENT PLAN, MODELS & RESULTS (FINAL STAGE)				
PROJECT NO. P1806439	PLANSET NO. PS05	RELEASE NO. R04	DRAWING NO. PS05-E701	REVISION C

PRINTED: 19/07/2019 14:00:00

A1 / A3 LANDSCAPE (A1L1C_v02.0.01)

DRAWING ID: P1806439-PS05-R04-E701

0 10 20 30 40 50 60 70 80 90 100 METRES