

18.01.19

## Ellen Mannix

Senior Planning Officer  
Key Sites Assessments  
NSW Planning & Environment  
GPO Box 39  
Sydney NSW 2001



NEESON MURCUTT  
ARCHITECTS PTY LTD

**Re AUSTRALIAN MUSEUM – ALTERATIONS & ADDITIONS  
SSD 9452  
REVISED DESIGN STATEMENT**

Dear Ellen,

In response to the feedback received from the Government Architect on the 18<sup>th</sup> December 2018 regarding SSD 9452 for the Australian Museum – Alterations & Additions the design team has completed a review of the feedback with the Museum to address the key points raised. The key changes following the SSD submission on the 11<sup>th</sup> August 2018 are detailed below. Please read these in conjunction with the updated drawings, reports and submissions table.

Summary of key design changes:

**1. A refined vision for the future of Australia’s oldest museum with increased access to heritage fabric**

The amended design reveals more heritage fabric, and increases public access (refer submissions table for specific responses to items identified).

**2. A level Museum ‘heart’**

The ‘heart’ (Still Addition, ground level) is the main space of the museum – its grand hall / orientation space. The amended design raises the ‘heart’ floor to match the Vernon / Barnet levels. This effectively enlarges the heart and establishes more legible and equitable access to the historic exhibition spaces around it. The new floor level is consistent with the future vision, which anticipates the extension of the heart east towards Yurong Street.

**3. Reduced redundancy – more work now that sustains into the future**

- The touring exhibition space on the basement level is a permanent gallery, retained into the future.
- The amended fire stair is relocated to the glazed link (between the Parkes Farmer and Lewis wings) so that it can be retained into the future. It significantly improves museum circulation, provides a strong engagement with St Mary’s Cathedral and Cook and Phillip Park, and improves buildability.
- The amended escalator to the basement level touring exhibition space accommodates the raised heart floor, and can be retained into the future. It

Cox Architecture Pty Ltd  
ACN 002535891  
Nominated Architects  
Joe Agius No. 6491  
Russell Lee No. 6367

PO Box Q193 Sydney NSW 1230  
Level 6, 155 Clarence St  
Sydney NSW 2000 Australia  
T + 61 2 9267 9599  
F + 61 2 9264 5844  
[www.coxarchitecture.com.au](http://www.coxarchitecture.com.au)

improves exhibition circulation and reduces the impact on the heart to maximise its flexibility.

- The amended amenities are relocated to the lower ground level of the Lewis wing, which is anticipated to become the future entry level. These amenities can be retained into the future. This is ample space here to include an appropriately scaled cloakroom, significantly improving the functionality of the visitor services.
- A wider opening to the northern façade of the Parkes Farmer wing in combination with the relocated fire stair improves circulation and consolidates the public entry and exit to the museum. This amended circulation locates the museum shop on the exit path, improving visitor flow and negating the need to extend Crystal Hall. The wider opening can be retained into the future.

#### **4. Less work now on William Street with bigger picture changes in the future**

- The future entry envisages a city-scaled, public, north facing entry terrace along William Street. The current stage of work anticipates this future but focuses predominantly on internal changes – circulation, legibility, visitor facilities, and new permanent touring exhibition space.
- The amended scheme reduces redundant work by retaining the Crystal Hall undercroft largely in its current arrangement, with minor works to improve access and assembly for groups – William Street stair retained, existing kiosk relocated, reduced landscape works.

#### **5. Improved group entry spaces on Lower Ground**

The amended design improves legibility and functionality to the groups entry. Please note that groups are welcomed and ushered by Museum staff.

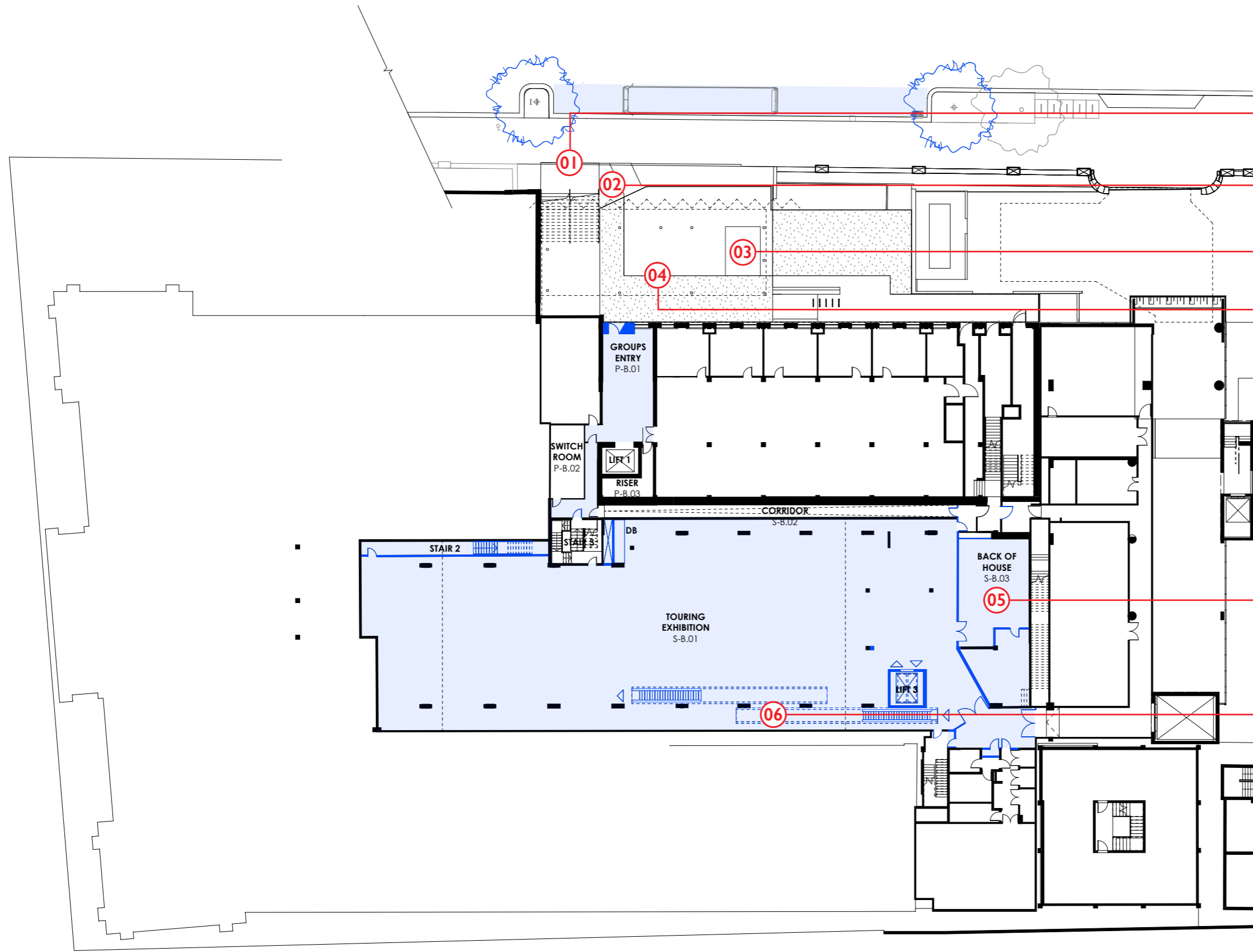
- Visibility to the new basement groups entry is improved by retaining the William Street stair in its existing location, and relocating the existing coffee cart to the eastern end of the Crystal Hall undercroft. This also creates a generous covered marshalling space for school groups.
- Amended landscaping to the undercroft establishes a more direct connection between the bus drop off and the basement groups entry. The retained William Street stair also has a direct connection to the bus drop off.
- The rationalised entry arrangement allows group marshalling under the Crystal Hall, queuing in the more generous lower ground lobby, and additional queuing at the top of the William Street stair. A reception and security point is located at the lower ground entry.
- The amended location of the groups amenities works much better with the existing services to avoid disturbance to palaeontology located in the basement below. It establishes a designated amenities for groups, separate to the public amenities.

We trust that the following design changes are in line with the recommendations received.

Yours faithfully,

**Rachel Neeson** (Director, Neeson Murcutt Architects)  
**Joe Agius** (Director, Cox Architecture)





EXISTING WILLIAM STREET STAIRS  
RETAINED - NO NEW KIOSK

NEW ACCESS PATH FROM  
FOOTPATH TO GROUPS ENTRY

EXISTING COFFEE CART  
RELOCATED TO THE EAST

EXISTING SHELTERED  
GARDEN RETAINED

REPLANNED FIRE ROOM AND  
BACK OF HOUSE TO IMPROVE  
LOADING

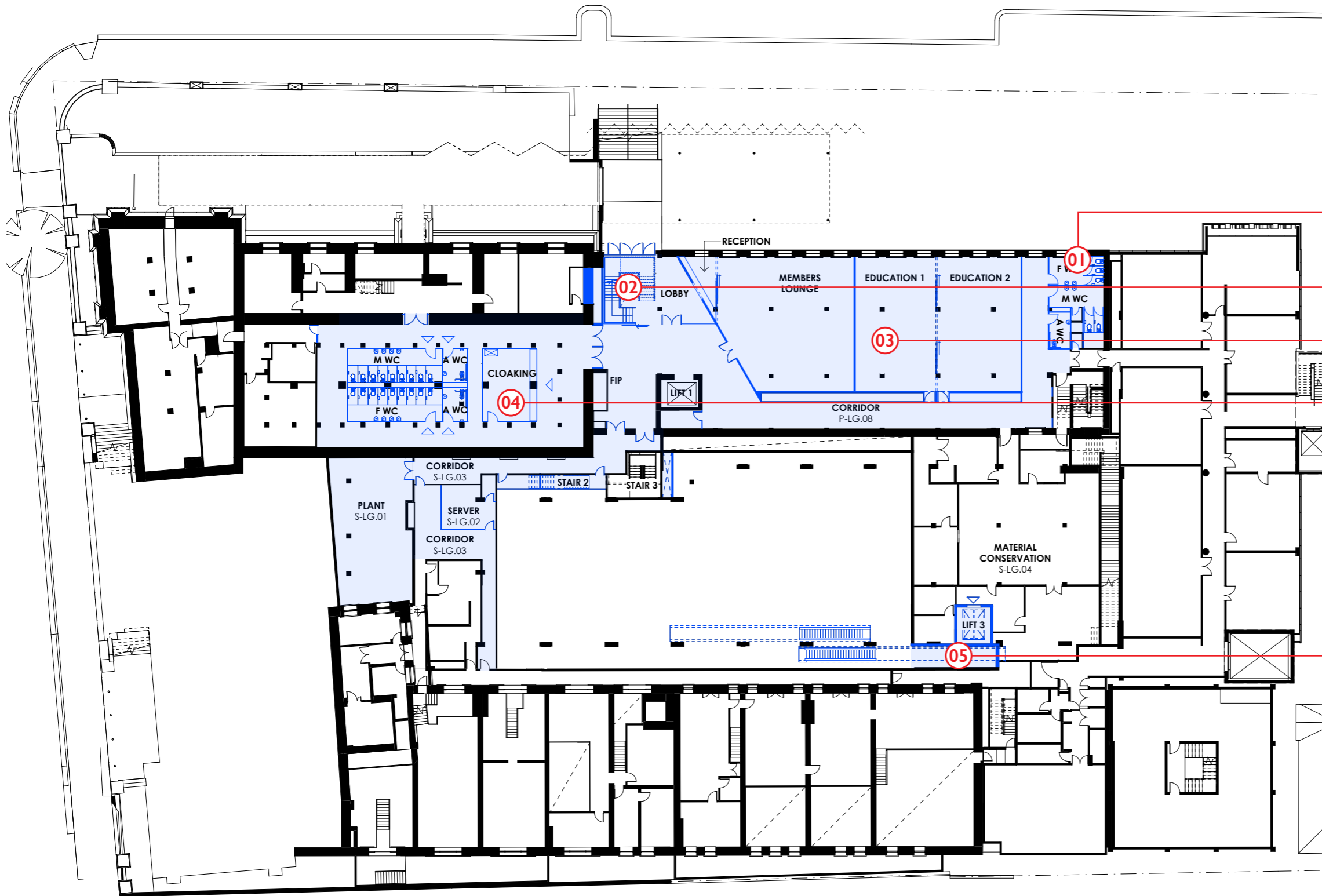
RELOCATED ESCALATORS +  
REDUCED VOID TO INCREASE  
HEART SIZE

**LEGEND**

— EXISTING REMAINS

— NEW WORK

# BASEMENT

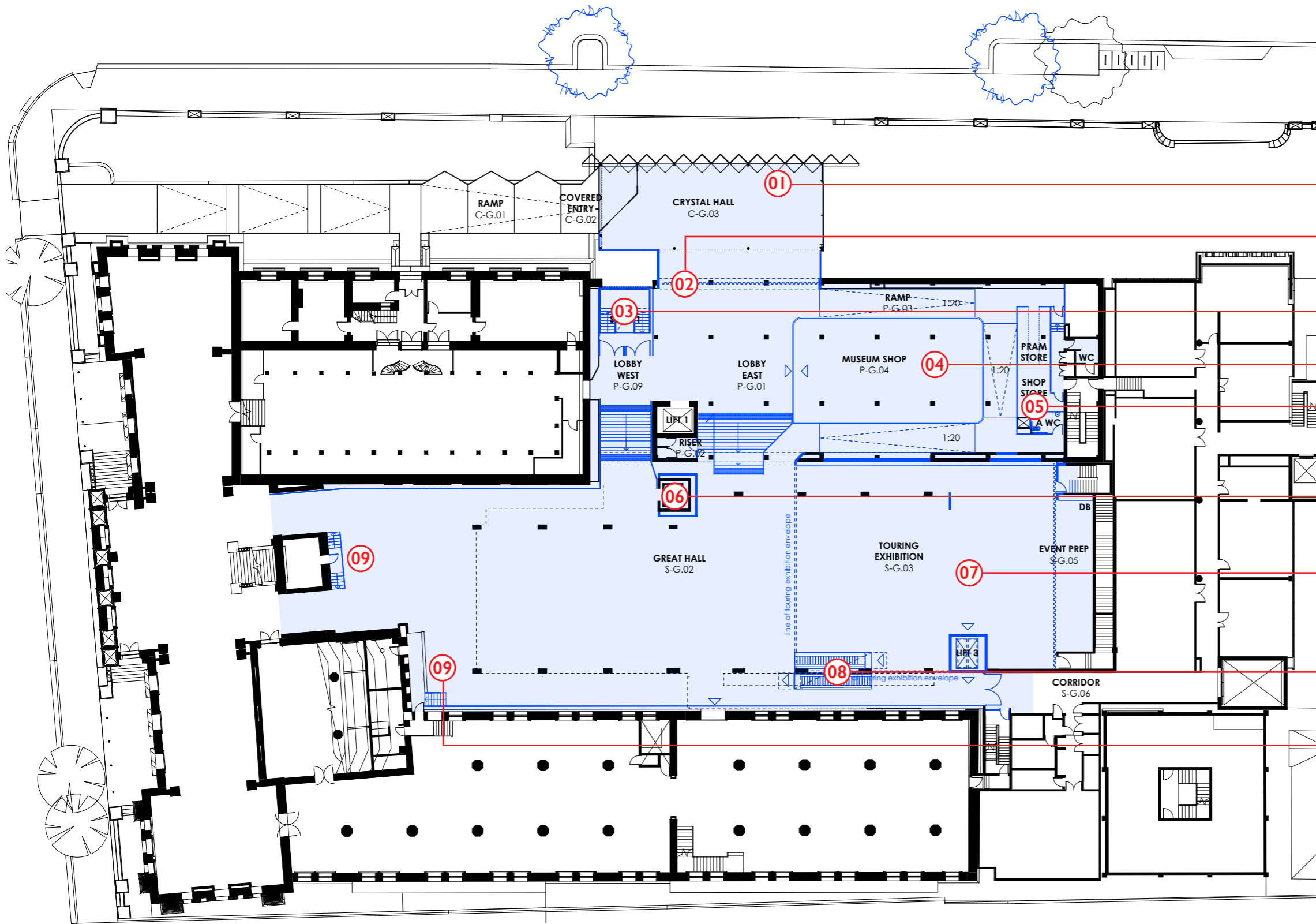


- 01 DEDICATED GROUPS AMENITIES
- 02 NEW STAIR RELOCATED TO GLAZED LINK
- 03 MORE GENEROUS MEMBERS LOUNGE + EDUCATION SPACES
- 04 AMENITIES AND CLOAKING RELOCATED TO LOWER GROUND LEVEL
- 05 ADDITIONAL DEMOLITION TO MATERIALS CONSERVATION FOR ESCALATOR

**LEGEND**

- EXISTING REMAINS
- NEW WORK

# LOWER GROUND

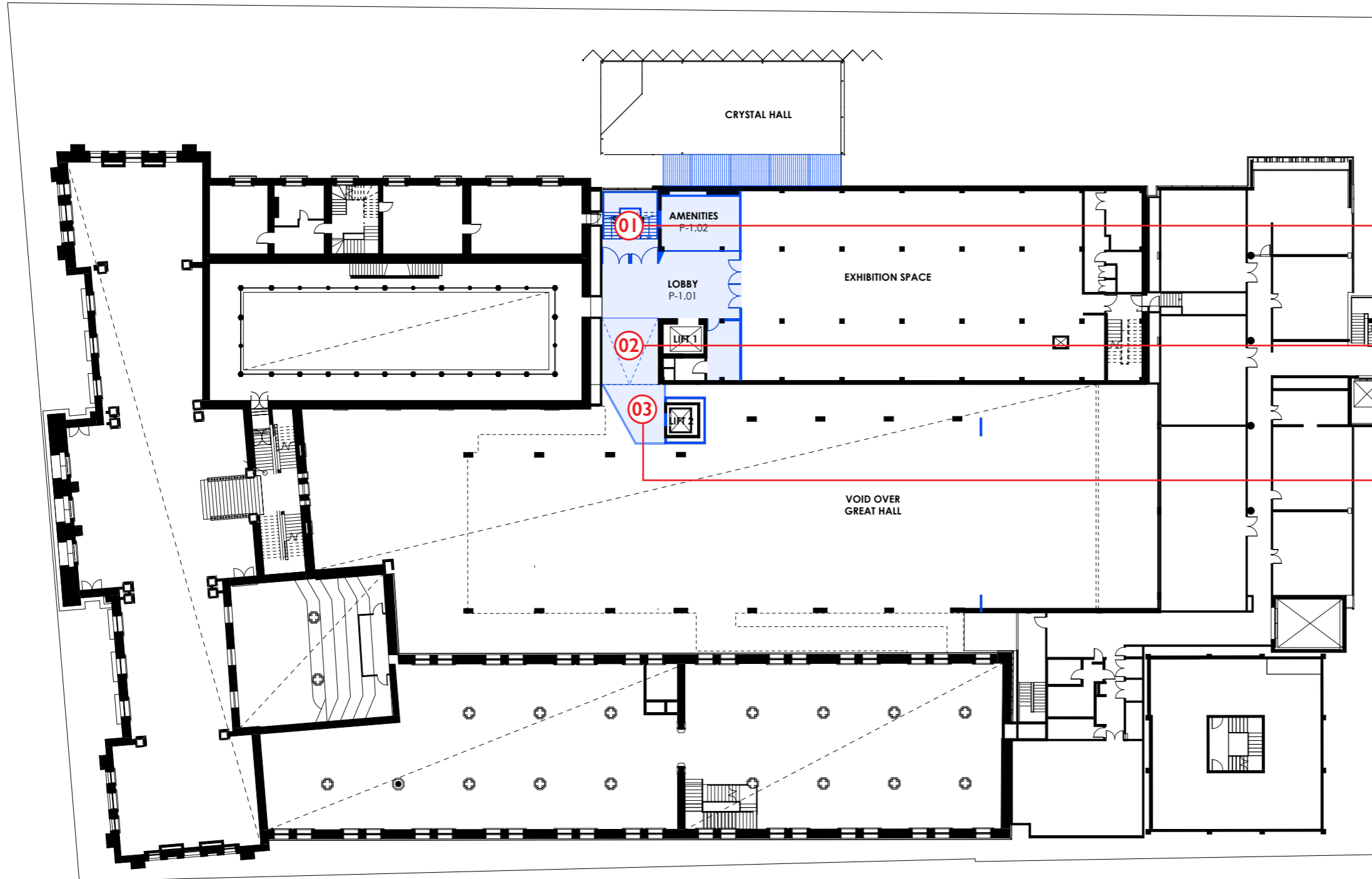


- CRYSTAL HALL REMAINS AT CURRENT LENGTH
- INCREASED ENTRY OPENING
- NEW STAIR RELOCATED TO GLAZED LINK
- INCREASED SHOP LENGTH
- PUBLIC AMENITIES + MORE GENEROUS CLOAKING RELOCATED TO LOWER GROUND
- LIFT ALTERED TO STOP AT NEW HEART LEVEL
- RAISED HEART FLOOR - REMOVES RAMPS MAKING WIDTH OF STILL ADDITION ACCESSIBLE
- RELOCATED ESCALATORS + REDUCED VOID TO INCREASE HEART SIZE
- NEW ACCESS TO EXISTING TOILETS + STORE

**LEGEND**

- EXISTING REMAINS
- NEW WORK

# GROUND

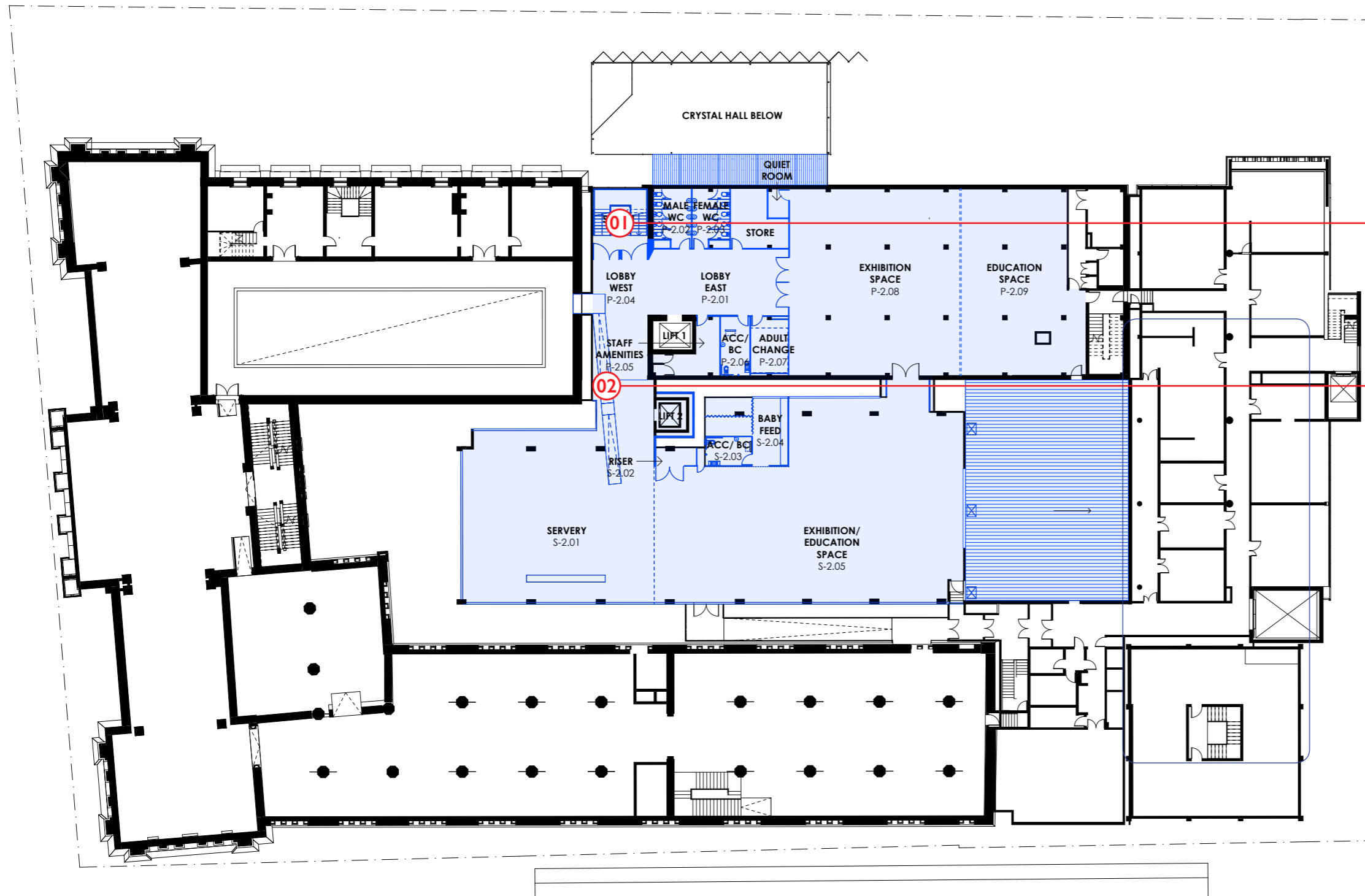


- NEW STAIR RELOCATED TO GLAZED LINK
- DEMOLISH LEVEL I SLAB + CONSTRUCT NEW RAMP TO LIFT LANDING TO ACHIEVE HEAD HEIGHT TO GROUND LEVEL BELOW
- CONSTRUCT NEW LANDING AND BALUSTRADE. LIFT 2 STOPS AT LEVEL I

**LEGEND**

- EXISTING REMAINS
- NEW WORK

# LEVEL I



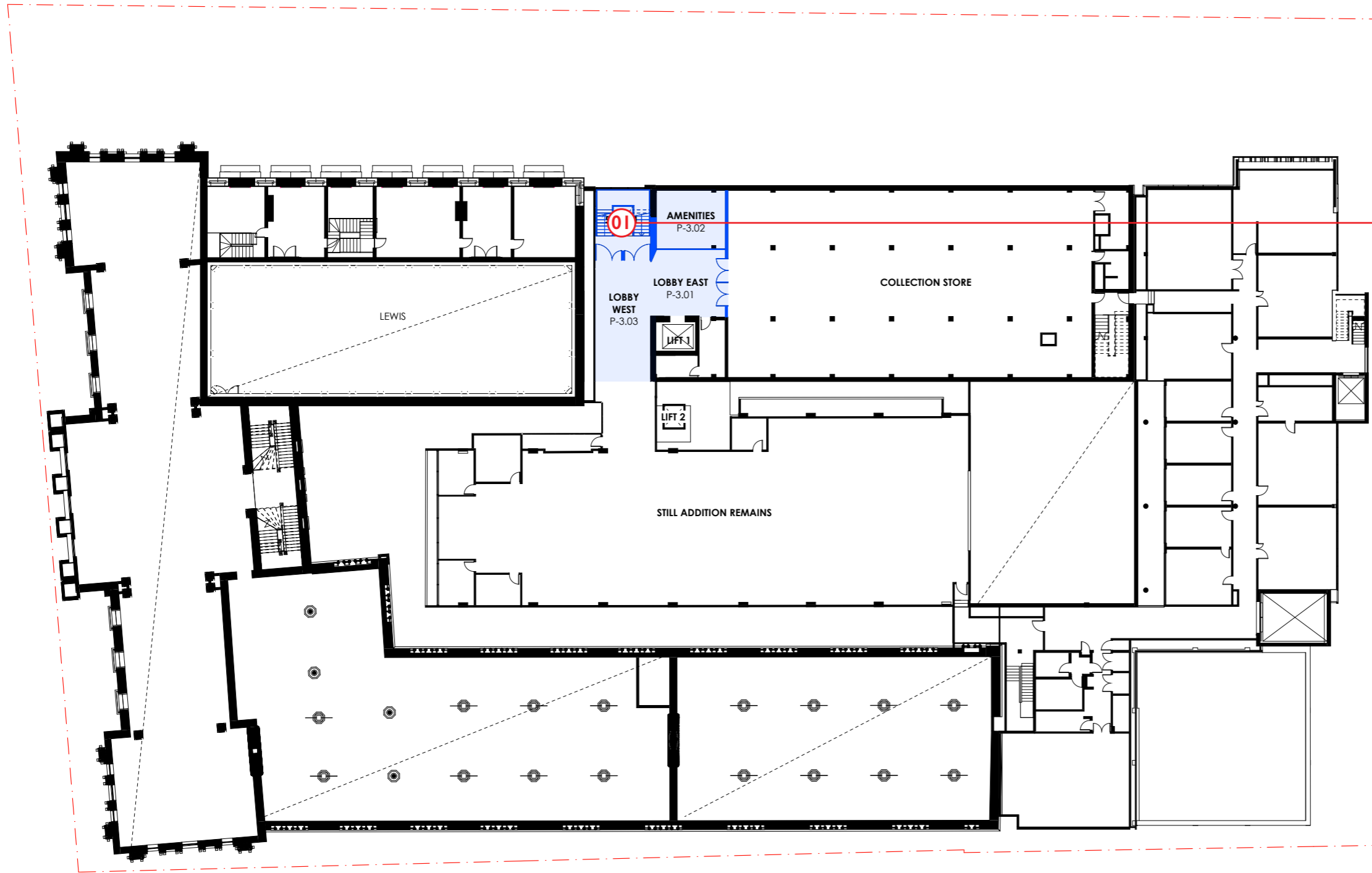
NEW STAIR RELOCATED TO GLAZED LINK

NEW RAMP TO PROVIDE ACCESS UP TO THE LEWIS WING (REFER ALSO OPTION 2 + 3)

**LEGEND**

- EXISTING REMAINS
- NEW WORK

# LEVEL 2

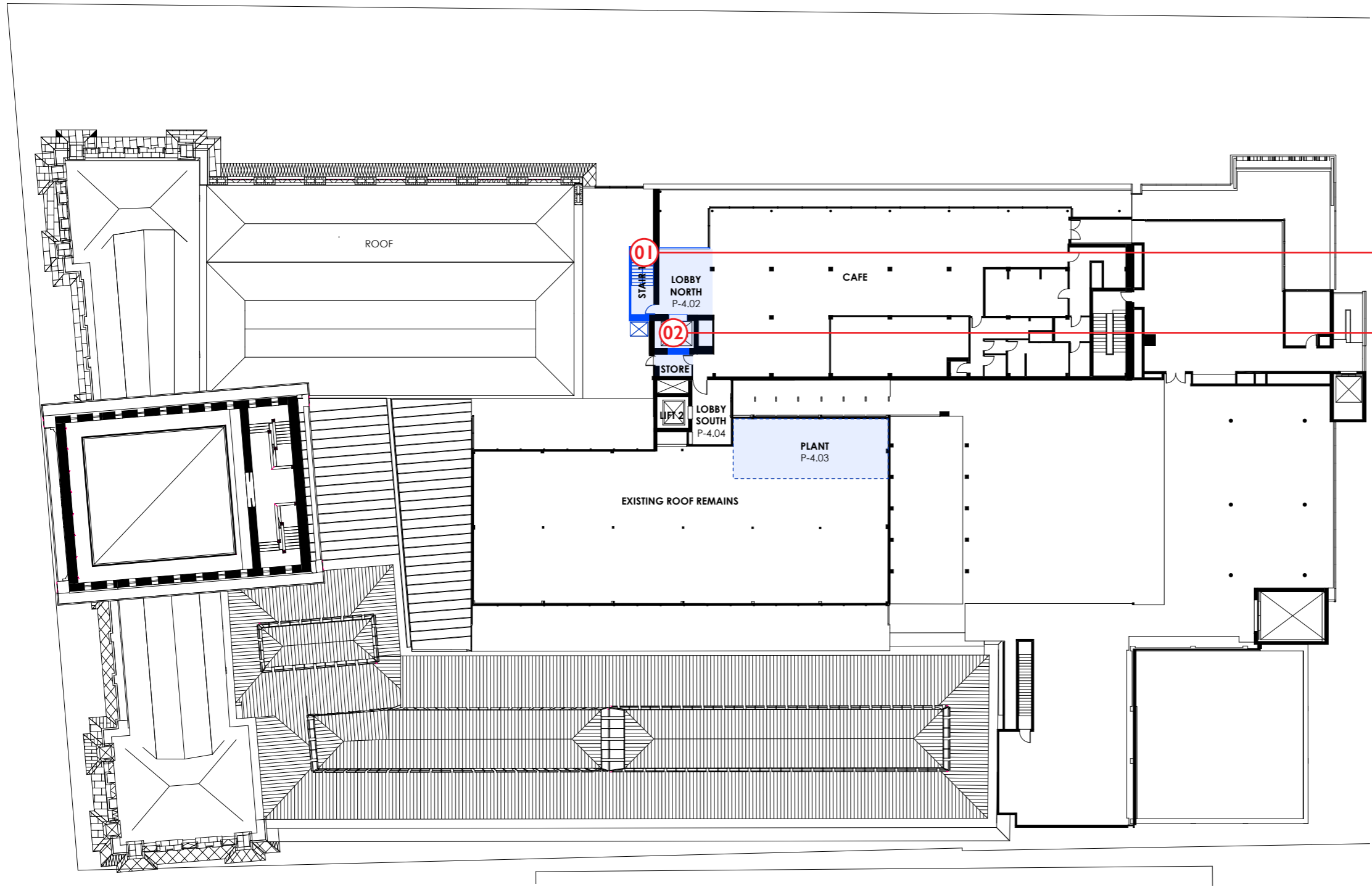


NEW STAIR RELOCATED TO GLAZED LINK

LEGEND

- EXISTING REMAINS
- NEW WORK

# LEVEL 3



NEW STAIR DISCHARGES TO LEVEL 4 CAFE

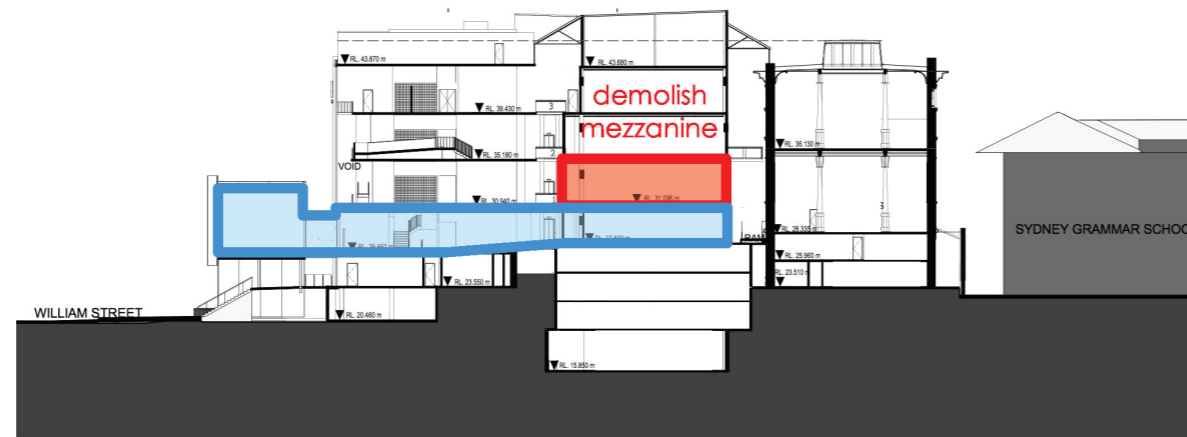
LIFT ALTERED TO OPEN TO NORTH - VIEWS OUT TO THE CITY

**LEGEND**

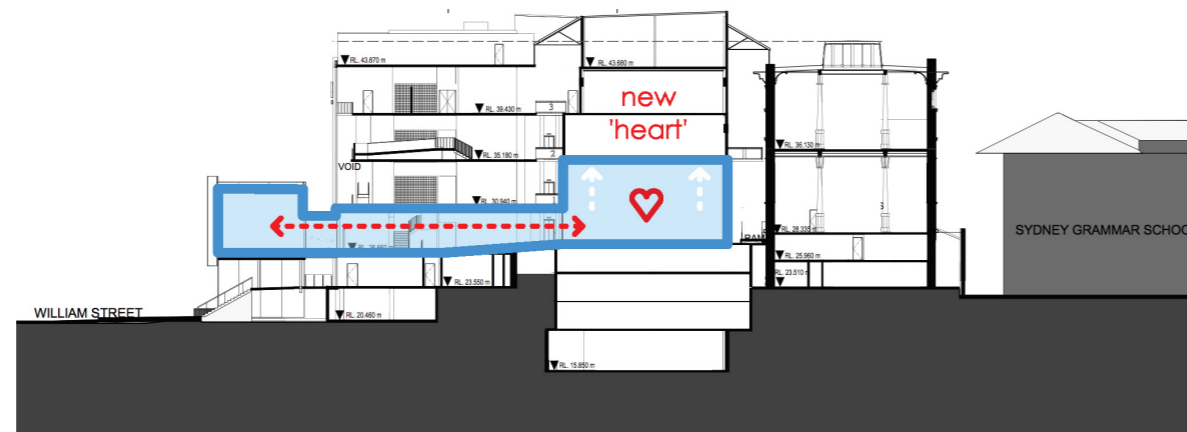
- EXISTING REMAINS
- NEW WORK

# LEVEL 4

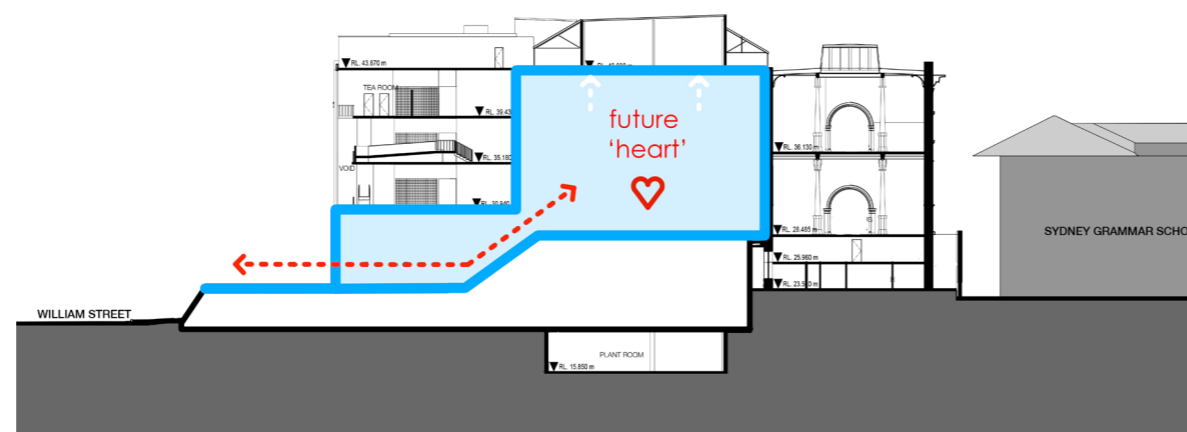
## THE BIG FUTURE - POTENTIAL FOR A CENTRAL HALL



EXISTING



PROPOSED



FUTURE

### What is the Museum achieving through this project?

Creating a bigger touring exhibition space and improved amenity for increased visitor numbers, largely within the existing envelope. The project anticipates a peak flow of 112.5 - 118.8 per 15 minute slot / 7.5 - 7.9 entries per minute.

- Improved visitor amenities requires:
- > separate entrance for groups
  - > better way finding
  - > increased queuing / ticketing space
  - > increased toilets
  - > new education gallery
  - > better shop

### How is the Museum able to achieve this?

The relocation of the Pacific Collection off-site frees up roughly 7,400m<sup>3</sup> of volume within the existing envelope.

### Why is the museum wanting to do this?

To be able to hold significant touring exhibitions, currently lost to Melbourne.

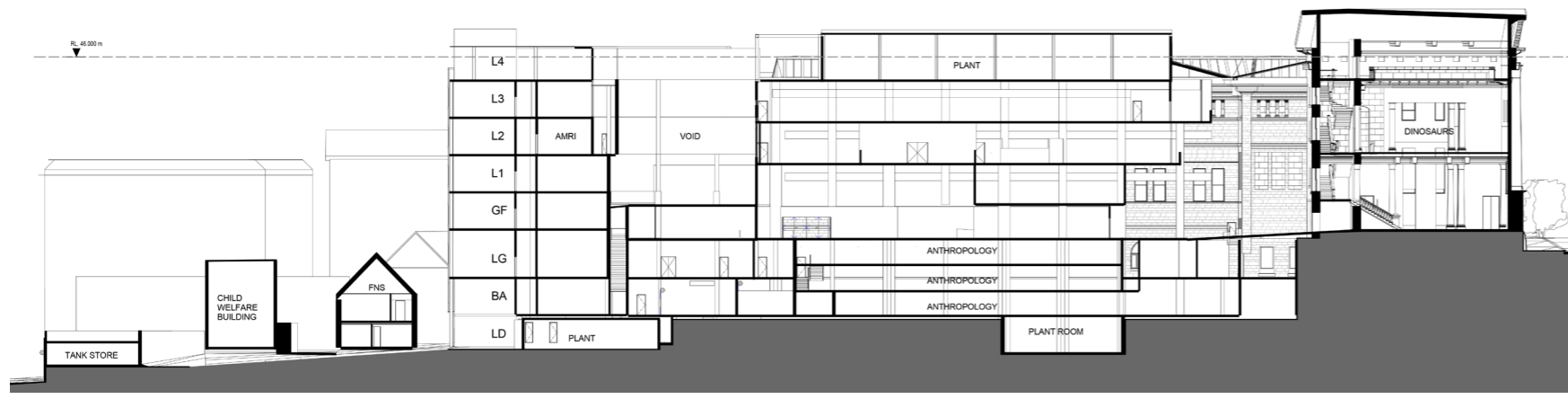
### How does this project fit into the bigger context of the Master Plan?

- It anticipates:
- > future extension of Museum east to Yurong Street
  - > future expansion of central hall or 'heart'
  - > future public plaza and consolidated entry at lower ground level from the corner of College + William streets

### What is the strategic approach to dealing with heritage fabric?

- recover heritage:
- > reveal as much as the original fabric as possible
  - > clearly express new and old following the established principle of separation

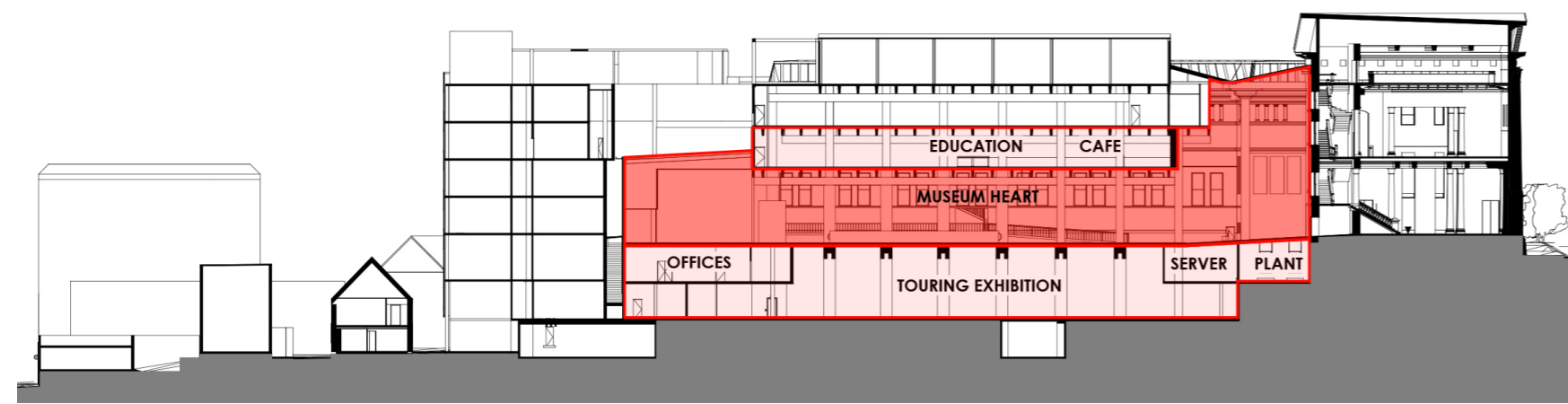
- ensure new interventions:
- > are astute for the long-term
  - > are carefully considered



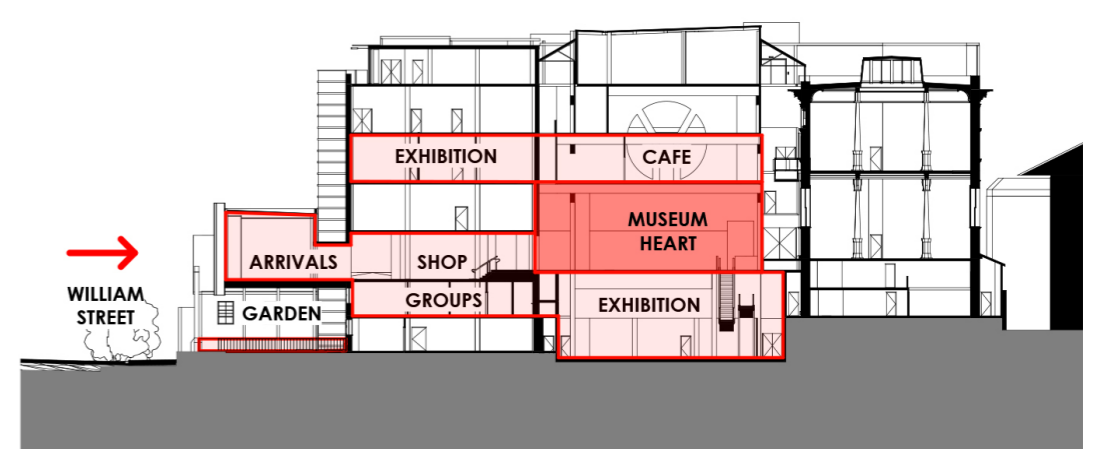
EXISTING



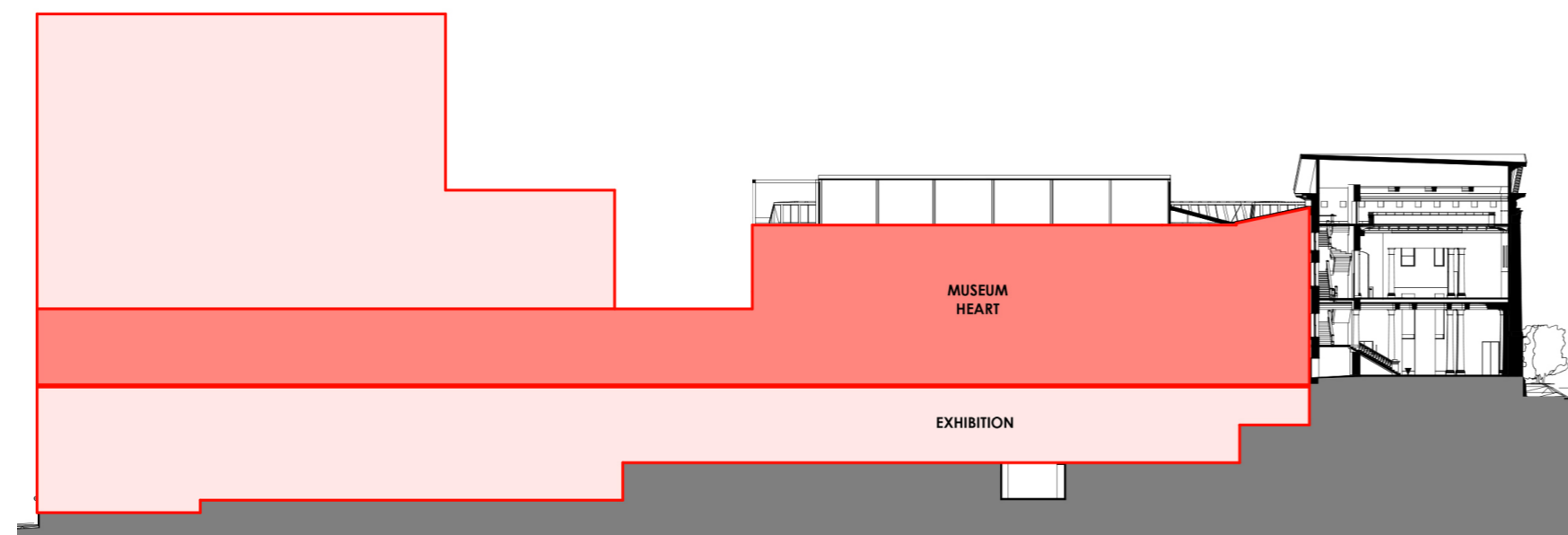
EXISTING



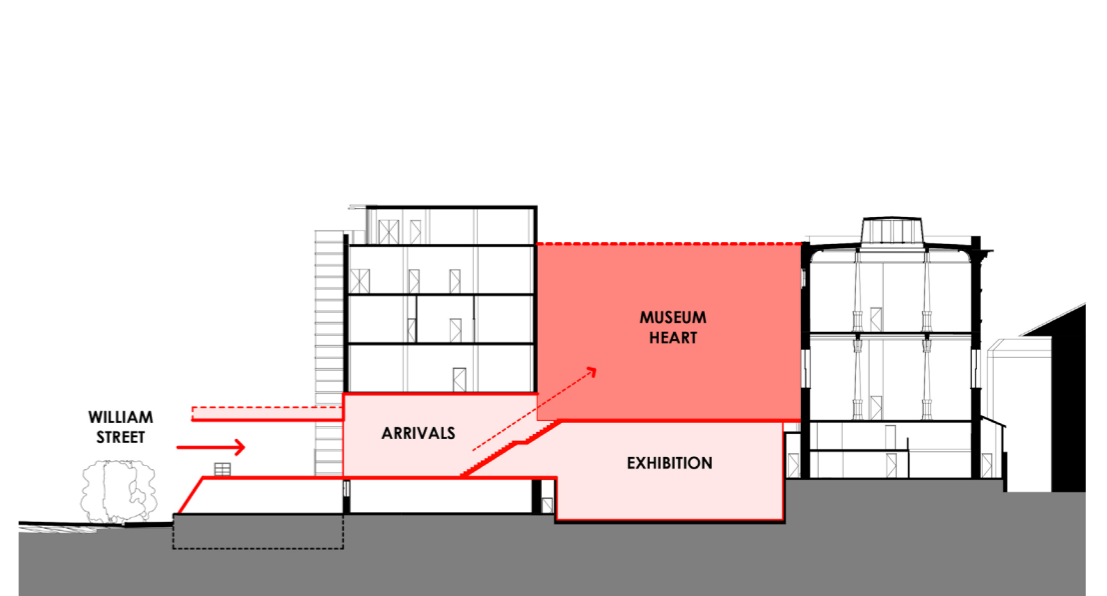
PROPOSED



PROPOSED



FUTURE



FUTURE