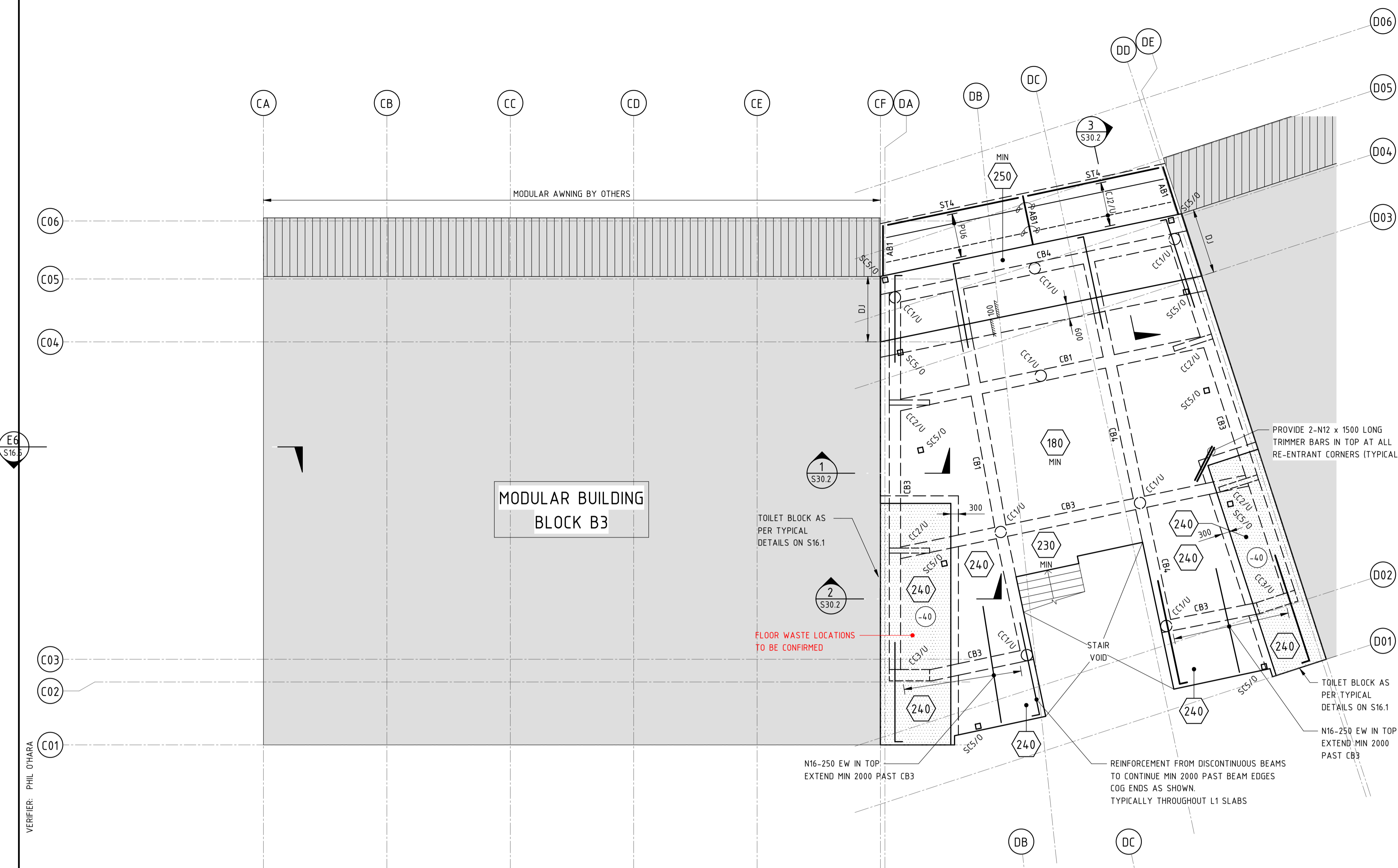


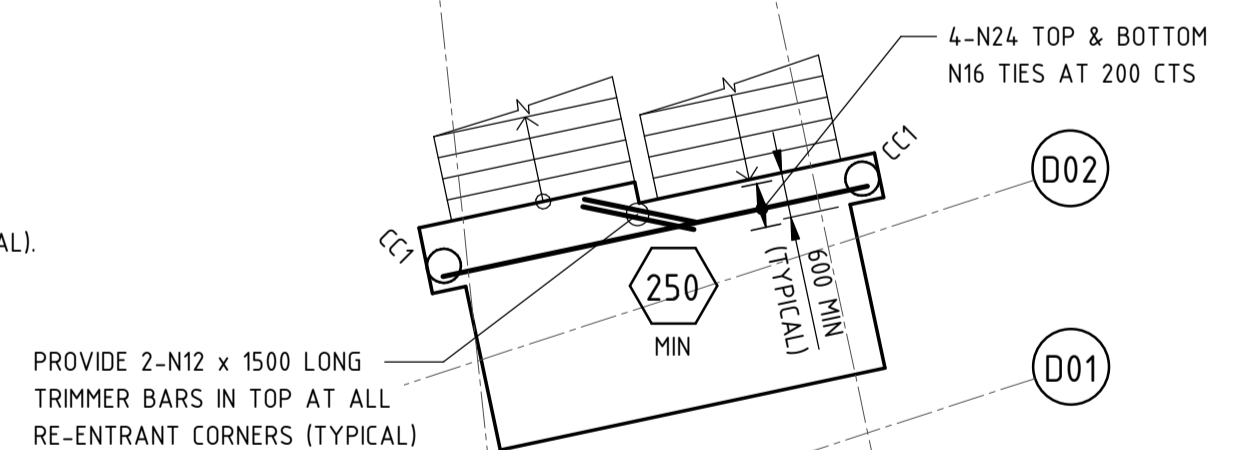
DRAWINGS NOT TO BE USED FOR CONSTRUCTION UNLESS VERIFICATION SIGNATURE HAS BEEN ADDED. THE COPYRIGHT OF THIS DRAWING REMAINS WITH NORTHROP CONSULTING ENGINEERS PTY LTD. ALL SETOUT TO ARCHITECT'S DRAWINGS. DIMENSIONS TO BE VERIFIED WITH ARCHITECT AND BUILDER BEFORE COMMENCING SHOP DRAWINGS OR SITE WORK. NORTHROP ACCEPTS NO RESPONSIBILITY FOR THE USABILITY, COMPLETENESS OR SCALE OF DRAWINGS TRANSFERRED ELECTRONICALLY.



MODULAR BUILDING  
BLOCK B3

**COLA B3-B4  
LEVEL 1 SLAB PLAN**

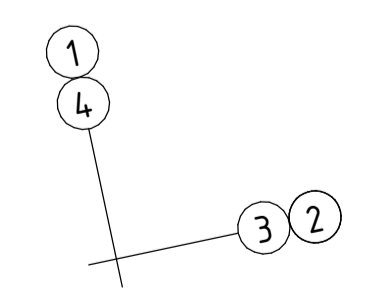
- SLAB TO BE 180 MIN THICK, CONCRETE STRENGTH 40MP<sub>a</sub> (TYPICAL U.N.O.).
- PROVIDE N12-250 CTS EACH WAY TOP & BOTTOM (TYPICAL U.N.O.).
- PROVIDE 2-N12 x 1500 LONG TRIMMER BARS AT ALL RE-ENTRANT CORNERS (TYPICAL).
- FALLS TO ARCHITECT'S DETAILS.
- PROVIDE N16-200 CTS EACH WAY TOP AND BOTTOM (TYPICAL U.N.O.).



**COLA B3-B4 STAIR PART PLAN**

- PROVIDE N16-200 CTS EACH WAY TOP & BOTTOM (TYPICAL U.N.O.).
- REFER TO S50.1 FOR TYPICAL STAIR DETAILS.

**LAYING SEQUENCE**

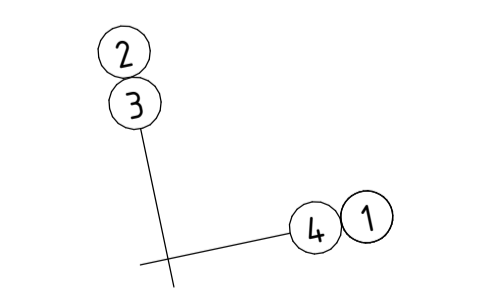


**REINFORCEMENT LAP SCHEDULE**

BAR SIZE	LAP LENGTH
N12	600
N16	700
N20	800
N24	1000
N28	1200
N32	1300
N36	1500
N40	1600

- LAP SLAB BTM REINFORCEMENT ONLY OVER COLUMN / BEAM LOCATIONS.
- LAP SLAB TOP REINFORCEMENT AT SLAB MIDSPANS.

**BEAM LAYING SEQUENCE**



**COLUMN SCHEDULE**

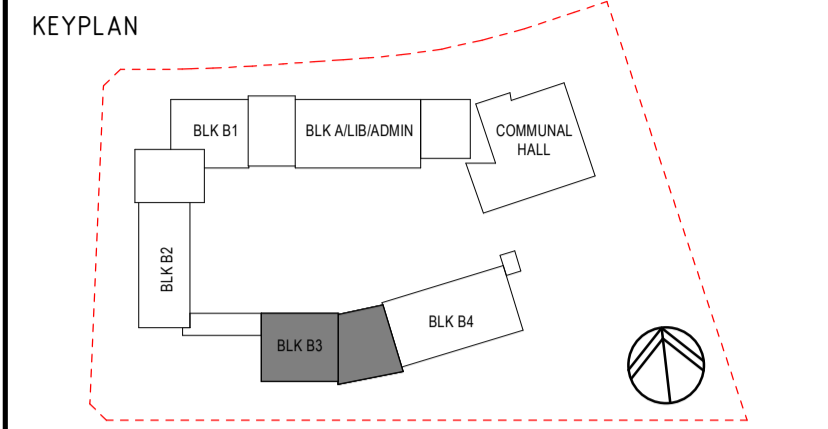
MARK	SIZE	COMMENT(S)
<b>CONCRETE</b>		
CC1	450 DIAMETER	10-N16 VERTICAL BARS WITH N12 TIES-300 CTS
CC2	200 x 1600	N16 VERTICAL BARS-200 CTS WITH N12 TIES-300 CTS
CC3	450 x 1600	N16 VERTICAL BARS-200 CTS WITH N12 TIES-300 CTS
<b>STEEL</b>		
DC1	100 x 100 x 5.0 SHS	DOOR COLUMN
SC1	310 UC 96.8	
SC2	310 UB 32.0	
SC3	250 x 150 x 9.0 RHS	
SC4	101.6 DIAMETER x 3.2 CHS	
SC5	200 x 200 x 5.0 SHS	
SC6	300 x 200 x 6.0 RHS	
SC7	300 x 200 x 8.0 RHS	

**BEAM SCHEDULE**

MARK	SIZE	COMMENT(S)
<b>CONCRETE</b>		
CB1	500 DEEP MIN x 450 WIDE	4-N24 IN TOP & BTM WITH N12 TIES-300 CTS
CB2	600 DEEP MIN x 450 WIDE	4-N24 IN TOP & BTM WITH R10 TIES-300 CTS
CB3	500 DEEP MIN x 450 WIDE	4-N16 IN TOP & BTM WITH R10 TIES-250 CTS
CB4	500 DEEP MIN x 450 WIDE	4-N20 IN TOP & BTM WITH R10 TIES-250 CTS
CB5	600 DEEP MIN x 450 WIDE	4-N16 IN TOP & BTM WITH R10 TIES-300 CTS
CB6	600 DEEP MIN x 450 WIDE	4-N28 IN TOP & BTM WITH R10 TIES-300 CTS
CB7	500 DEEP MIN x 1000 WIDE	8-N20 IN TOP & BTM WITH N12 TIES-300 CTS
CB8	600 DEEP MIN x 1600 WIDE	N16-200 TOP & BTM WITH R10 TIES-250 CTS
<b>STEEL MEMBER SCHEDULE</b>		
<b>MARK</b>		
<b>SIZE</b>		
<b>COMMENT(S)</b>		
<b>PURLIN</b>		
CJ1	S2200 19-1200 CTS	CEILING JOIST, 2 ROWS BRIDGING AT THIRD POINTS
CJ2	SC150 15-1000 CTS	CEILING JOIST, 1 ROW BRIDGING AT MID POINTS
<b>PU</b>		
PU1	S2200 24-1200 CTS	2 ROWS BRIDGING AT THIRD POINTS
PU2	S2200 19-1200 CTS	2 ROWS BRIDGING AT THIRD POINTS
PU3	S2200 15-1200 CTS	1 ROW BRIDGING AT MID POINTS
PU4	S2200 19-2300 CTS	2 ROWS BRIDGING AT THIRD POINTS
PU5	SZ150 19-1200 CTS	
PU6	SC150 15-1000 CTS	1 ROW BRIDGING AT MID POINTS
<b>RAFTER</b>		
AB1	250 PFC	AWNING RAFTER
<b>STRUT</b>		
ST	89 x 89 x 3.5 SHS	
ST1	125 x 125 x 4.0 SHS	
ST2	200 x 200 x 5.0 SHS	
ST3	300 x 200 x 6.0 RHS	
ST4	200 x 100 x 4.0 RHS	

**LEGEND**

- DENOTES SLAB THICKNESS
- DENOTES SLAB STEP
- DENOTES SETDOWN VALUE FOR WET AREAS
- DENOTES PENETRATION/VOID IN SLAB, PROVIDE TRIMMER BARS
- DENOTES REINFORCED CONCRETE COLUMN OVER
- DENOTES REINFORCED CONCRETE COLUMN UNDER
- DENOTES REINFORCED CONCRETE COLUMN OVER & UNDER
- DENOTES STEEL COLUMN OVER
- DENOTES STEEL COLUMN UNDER
- DENOTES STEEL COLUMN OVER & UNDER
- DENOTES 2 x 16 DIAMETER GALVANISED THREADED DOWEL RODS TO MODSCOPE AT ALL DOOR OPENINGS & WALKWAY JUNCTIONS, REFER TO S30.1 FOR DATILS (TYPICAL)
- DENOTES FLOOR WASTE, LOCATIONS NOT TO BE THROUGH CONCRETE BEAMS (TYPICAL)



REV	DESCRIPTION	ISS'D	VER'D	APP'D	DATE
A	ISSUED FOR DDR	L.M		R.D	17.06.19
B	REVISED FOR DDR SUBMISSION	L.M		R.D	21.06.19
C	PROGRESS ISSUE	L.M		R.D	28.06.19
D	PROGRESS ISSUE	L.M		R.D	05.07.19
E	FINAL COORDINATION ISSUE	L.M		R.D	12.07.19
F	ISSUED FOR CONSTRUCTION	L.M	P.O'H	R.D	17.07.19

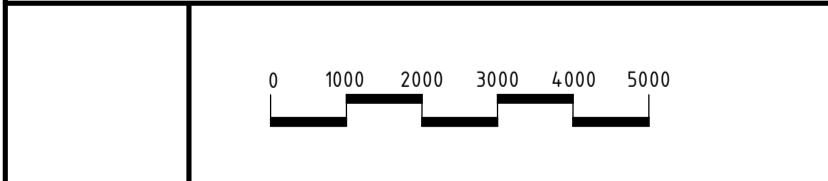
CLIENT  
**RICHARD CROOKES  
CONSTRUCTIONS**

ARCHITECT  
**GROUP USA**

**NSW** Education  
GOVERNMENT

PROJECT  
**ALEX AVENUE PUBLIC SCHOOL**

**NORTHROP**  
Sydney  
Level 11, 345 George Street, Sydney, N.S.W. 2000  
Ph (02) 9241 4188 Email: sydney@northrop.com.au  
ABN 81 094 433 100



DRAWING TITLE  
**STRUCTURAL DRAWING  
COLA B3-B4 LEVEL 1  
SLAB PLAN**

JOB NUMBER <b>S182535-01</b>	DRAWING NUMBER <b>S14.2</b>	REVISION <b>F</b>
---------------------------------	--------------------------------	----------------------

**FOR CONSTRUCTION**

VERIFIER: PHIL O'HARA  
 JOB MANAGER: RORY DALE  
 DESIGNED: BRENDAN BLAKE  
 DRAWN: LIAM MCKEUGH