

PLANTING STRATEGY

The Southern Arrival is the first area you see when you enter the hospital, the planting strategy aims to set the scene for the site and provides a bushland environment introducing the surrounding bushland communities of Smooth Barked Apple - Red Bloodwood Open Forest, Smooth Barked Apple Sydney Peppermint - Turpentine Forest and the Spotted Gum Ironbark Open Forest back into the courtyards. Bringing the bushland look and feel into the arrival precinct while also implementing shrubs, ground covers and grasses with varying seasonal flowering to allow the arrival precinct to have an all year round seasonal effect.

The proposed planting mix is preliminary and subject to further refinement during detail design



Anigozanthos hybrid 'Amber Velvet'



Doodia aspera



Blechnum cartilagineum



Banksia spinulosa



Acacia terminalis



Doryanthes excelsa



Dianella caerulea



Myoporum parvifolium



Cupaniopsis anacardioides



Eucalyptus moluccana



Xanthorrhoea latifolia



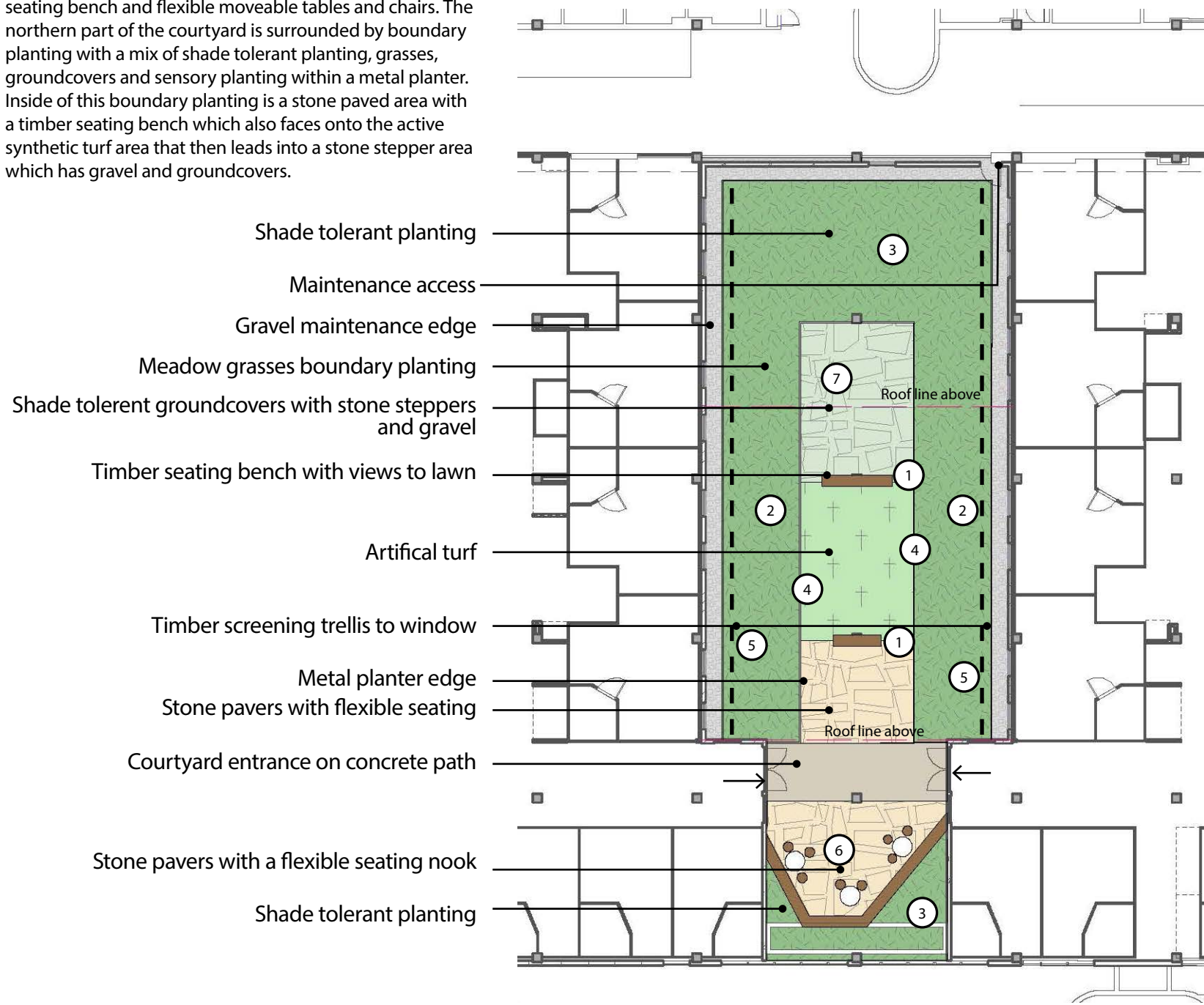
Poa labillardieri

SOUTHERN ARRIVAL FORECOURT					
AREA- 6,335 m2					
PLANT CODE	BOTANICAL NAME	COMMON NAME	MATURE HEIGHT AND SPREAD	CONTAINER SIZE	PLANTS PER M2
TREES					
ANG cos	Angophora costata	Smooth-Barked Apple	25m x 15m	400L	as shown
ANG flo	Angophora floribunda	Rough-Barked Apple	20m x 20m	200L	as shown
BAC cit	Backhousia citriodora	Lemon Scented Myrtle	20m x 5m	400L	as shown
EUC glo	Eucalyptus globoidea	White Stringybark	20m x 15m	200L	as shown
EUC pip	Eucalyptus piperita	Sydney Peppermint	20m x 15m	200L	as shown
EUC mol	Eucalyptus moluccana	Grey Box	15m x 5m	400L	as shown
SYN glo	Syncarpia glomulifera	Turpentine	16m x 8m	200L	as shown
ALL tor	Allocasuarina torulosa	Forest Oak	10m x 7m	200L	as shown
TRI laur	Tristaniopsis laurina	Water Gum	15m x 6m	200L	as shown
CUP ana	Cupaniopsis anacardioides	Tuckeroo	12m x 5m	200L	as shown
BAN int	Banksia integrifolia	Coastal Banksia	15m x 6m	200L	as shown
BRA jer	Brachychilton 'Jerilderie Red'	Jerilderie Red	9m x 7m	100L	as shown
OLE eur	Olea europea	Common Olive	7m x 4m	200L	as shown
PYR sou	Pyrus 'Southworth Dancer'	Southworth Dancer	7m x 4.5m	200L	as shown
LAG nat	Lagerstroemia indica x L.fauriei 'Natchez'	Natchez	6m x 6m	100L	as shown
SHRUBS					
ACA myr	Acacia myrtifolia	Red-Stemmed Wattle	3m x 3.0m	300mm	0.3
ACA ter	Acacia terminalis	Sunshine Wattle	3m x 2m	300mm	0.5
ACM smi	Acmena smithii	Common Lilly Pilly	5m x 3m	300mm	0.3
BAN spi	Banksia spinulosa	Hairpin Banksia	3m x 2.5m	300mm	0.3
CAL lit	Callistemon 'Little John'	Bottlebrush	0.90m x 1.5m	300mm	1
DAV uli	Daviesia ulicifolia	Gorse Bitter Pea	2m x 1m	300mm	1
DOR exc	Doryanthes excelsa	Gymea Lily	4m x 2m	300mm	0.5
EPA pul	Epacris pulchella	NSW Coral Heath	1.5m x 1m	300mm	1
GRE GC	Grevillea 'Gold Cluster'	Gold Cluster Grevillea	0.3m x 1m	300mm	1
LEP tri	Leptospermum trinervium	Slender Tea- tree	6m x 1-6m	300mm	1
LIC ram	Licuala ramsayi	Fan Palm	15m High	300mm	1
LOM sil	Lomatia silaifolia	Wild Parsely	6m x 3m	300mm	0.2
MAC com	Macrozamia communis	Burrawang	2.0m x 2.0m	300mm	0.5
PER lin	Persoonia linearis	Narrow Leaved Geebung	3m x 0.7m	300mm	1
TEL spe	Teloepa speciosissima	Waralah	3m x 3m	300mm	0.3
XAN lat	Xanthorrhoea latifolia	Grass Tree	2m x 1.5m	150mm	0.8
GRASSES & GROUNCOVERS					
ANI vel	Anigozanthos hybrid 'Amber Velvet'	Anigozanthos Amber Velvet	0.50m x 0.40m	150mm	3
ANI gol	Anigozanthos hybrid 'Everlastina Gold'	Anigozanthos Everlasting Gold	0.50m x 0.40m	150mm	3
AUS ful	Austrodanthonia fulva	Wallaby Grass	0.10m x 0.9m	150mm	1
BAU art	Baumea articulata	Jointed Twig Rush	2.5m x 2m	150mm	0.5
CAR app	Carex appressa	Tall Sedge	1m x 0.80m	150mm	1
CHR api	Chrysocephalum apiculatum	Yellow Buttons	0.3m x 0.5m	150mm	2
DIA cae	Dianella caerulea var. producta	Blue Flax Lily	1m x 2m	150mm	0.5
ENT str	Entolasia stricta	Wiry Panic	0.50m x 0.30m	150mm	4
HIB sca	Hibbertia scandens	Snake Vine	3m x 5m	150mm	0.2
IMP cyl	Imperata cylindrica	Blady grass	1.0m x 0.3m	150mm	4
ISO nod	Issolepis nodosa	Knobby Club Rush	1m x 1m	150mm	1
JUN usi	Juncus usitatus	Tussock Rush	1.2m x 0.5m	150mm	2
LEP lat	Lepidosperma laterale	Variable Sword Sedge	1.0m x 1.0m	150mm	1
LIR mus	Liriope muscari	Lily Turf	0.5m x 0.5m	150mm	2
LOM lon	Lomandra longifolia	Spiny-Headed Mat-Rush	1.2m x 1.0m	150mm	1
MYO par	Myoporum parvifolium 'Yareena'	Yareena Creeping Boobialla	0.10m x 1m	150mm	1
POA lab	Poa labillardieri	Common Tussock Grass	1m x 0.5m	150mm	2
PRA pur	Pratia purpurascens	Whiteroot	0.20m x 2m	150mm	0.5
THE aus	Themeda australis	Kangaroo Grass	1m x 0.5m	150mm	2
VIO hed	Viola hederacea	Ivy-leaved Violet	0.15m x 1m	150mm	1
ZIE smi	Zieria smithii subsp smithii	Sandfly Zieria	2m x 1m	300mm	1
FERNS					
ASP aus	Asplenium australasicum	Bird's Nest Fern	1.2m x 1.2m	300mm	1
BLE car	Blechnum cartilagineum	Soft Water Fern	1.5m x 1.5m	300mm	0.8
DOO asp	Doodia aspera	Prickly Rasp Fern	0.4m x 0.6m	150mm	0.5
CAL dub	Calochlaena dubia	False Bracken	2m x 1.5m	300mm	0.8

3.3 JHH REFURBISHMENT COURTYARDS

JHH COURTYARD #1 (WESTERN)

This refurbished John Hunter courtyard consists of an indoor room to the south which has an integrated seating nook surrounded by shade tolerant planting with a built in seating bench and flexible moveable tables and chairs. The northern part of the courtyard is surrounded by boundary planting with a mix of shade tolerant planting, grasses, groundcovers and sensory planting within a metal planter. Inside of this boundary planting is a stone paved area with a timber seating bench which also faces onto the active synthetic turf area that then leads into a stone stepper area which has gravel and groundcovers.



Stone steppers



Artificial Turf



Concrete



Planter Edging

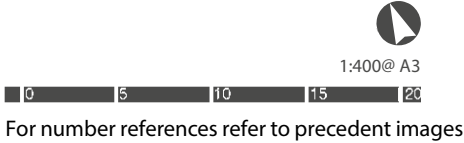


Stone paving

1:400@ A3
0 5 10 15 20
For number references refer to precedent images

JHH COURTYARD #2 (CENTRAL)

This refurbished John Hunter courtyard has been designed for future proofing and is a non-accessible courtyard at this point in time. It has been designed with metal planter edge to the boundary with a mix of shade tolerant planting, grasses, groundcovers and sensory planting with synthetic turf and stone pavers to the centre. This courtyard has been designed so it can adapt and be retro-fitted for patient access in the future.



Stone steppers

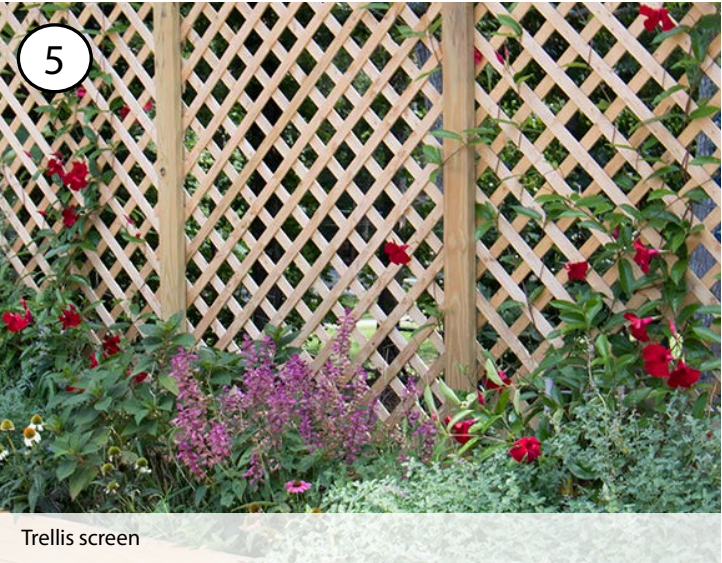


Artificial Turf



Planter Edging

PRECEDENT IMAGES FOR COURTYARD #1 & 2



PLANTING STRATEGY

The John Hunter Courtyards planting strategy is to incorporate shade tolerant planting to the undercroft area which will recieve majority of shade each day. These courtyards will also incorporate bushland grasses and ground covers to bring in the surrounding bushland look and feel into the courtyards. The John Hunter courtyards also have pockets of sensory planting that is scattered within the bushland and shade tolerant landscape allowing users to discover various sensory species upon their movement in and around the courtyard.

The proposed planting mix is preliminary and subject to further refinement during detail design.



Zamioculcas zamiifolia



Carex appressa



Liriope muscari



Calathea zebrina



Viola hederacea



Epipremnum aureum



Myoporum parvifolium



Calendula officinalis



Pennisetum alopecuroides



Lavandula angustifolia



Poa labillardieri



Rosemary officinalis

JHH COURTYARDS
AREA- 774 m2

PLANT CODE	BOTANICAL NAME	COMMON NAME	MATURE HEIGHT AND SPREAD	CONTAINER SIZE	PLANTS PER M2
SHADE TOLERANT SHRUBS, GRASSES & GROUNDCOVERS					
AGL red	Aglaonema commutatum 'Red Valentine'	Chinese evergreen	0.6m x 0.60m	150mm	5
CHL com	Chlorophytum comosum	Spider Plant	0.6m x 0.25	150mm	5
EPI aur	Epipremnum aureum	Devils Ivy	1m x 1m	300mm	4
ANT and	Anthurium andraeanum	Flamingo Lily	0.6m x 0.4m	150mm	5
CAL zeb	Calathea zebrina	Zebra Plant	1m x 2m	300mm	4
CAL mak	Calathea makoyana	Peacock Plant	0.6m x 0.6m	300mm	4
SPA wal	Spathiphyllum wallisii	Peace lily	1.0m x 1.0m	300mm	4
PIL pep	Pilea peperomioides	Chinese Money Plant	0.3m x 0.3m	300mm	4
ZAM zam	Zamioculcas zamiifolia	ZZ Plant	0.9m x 0.9m	300mm	4

GRASSES & GROUNDCOVERS

AUS ful	Austrodanthonia fulva	Wallaby Grass	0.10m x 0.9m	150mm	5
CAR app	Carex appressa	Tall Sedge	1m x 0.80m	150mm	5
DIC mic	Dichelachne micrantha	Short Haired Plume Grass		150mm	5
LIR mus	Liriope muscari	Lily Turf	0.5m x 0.5m	150mm	5
LOM nya	Lomandra longifolia 'Nyalla'	Spiny-Headed Mat-Rush	0.9m x 0.7m	150mm	5
MYO par	Myoporum parvifolium 'Yareena'	Yareena Creeping Boobialla	0.10m x 1m	150mm	5
POA lab	Poa labillardieri	Common Tussock Grass	1m x 0.5m	150mm	5
THE aus	Themeda australis	Kangaroo Grass	1m x 0.5m	150mm	5
VIO hed	Viola hederacea	Ivy-leaved Violet	0.15m x 1m	150mm	5

SENSORY PLANTING

ALL sch	Allium schoenoprasum	Chives	0.6m x 0.1m	150mm	5
ALO ver	Aloe vera barbadensis	Aloe	0.6m x 0.90m	150mm	5
BRA pac	Brachyscome 'Pacific Reef'	Native Daisy	0.2m x 0.3m	150mm	5
BRI max	Briza maxima	Greater Quaking Grass	0.6m x 0.3m	150mm	5
CAL off	Calendula officinalis	Pot Marigold	0.6m x 0.6m	150mm	5
COS atr	Cosmos atosanguineus	Cholocate cosmos	0.75m x 0.45m	150mm	5
HEL ita	Helichrysum italicum	Curry Plant	0.90m x 0.50m	150mm	5
HOU cor	Houttuynia cordata 'Chameleon'	Chameleon Plant	0.30m x 0.30m	150mm	5
LAV sp	Lavandula angustifolia	Lavender	0.90m x 0.90m	150mm	5
MIS oli	Miscanthus oligostachyus 'Nanus Variegatus'	Miscanthus		150mm	5
PEL cri	Pelargonium crispum	Lemon Scented Geranium		150mm	5
PEN alo	Pennisetum alopecuroides	Fountain Grass		150mm	5
PHL fru	Phlomis fruticosa	Jerusalem Sage		150mm	5
ROS off	Rosmarinus officinalis	Rosemary		150mm	5
SAL arg	Salvia argentea	Silver Sage		150mm	5

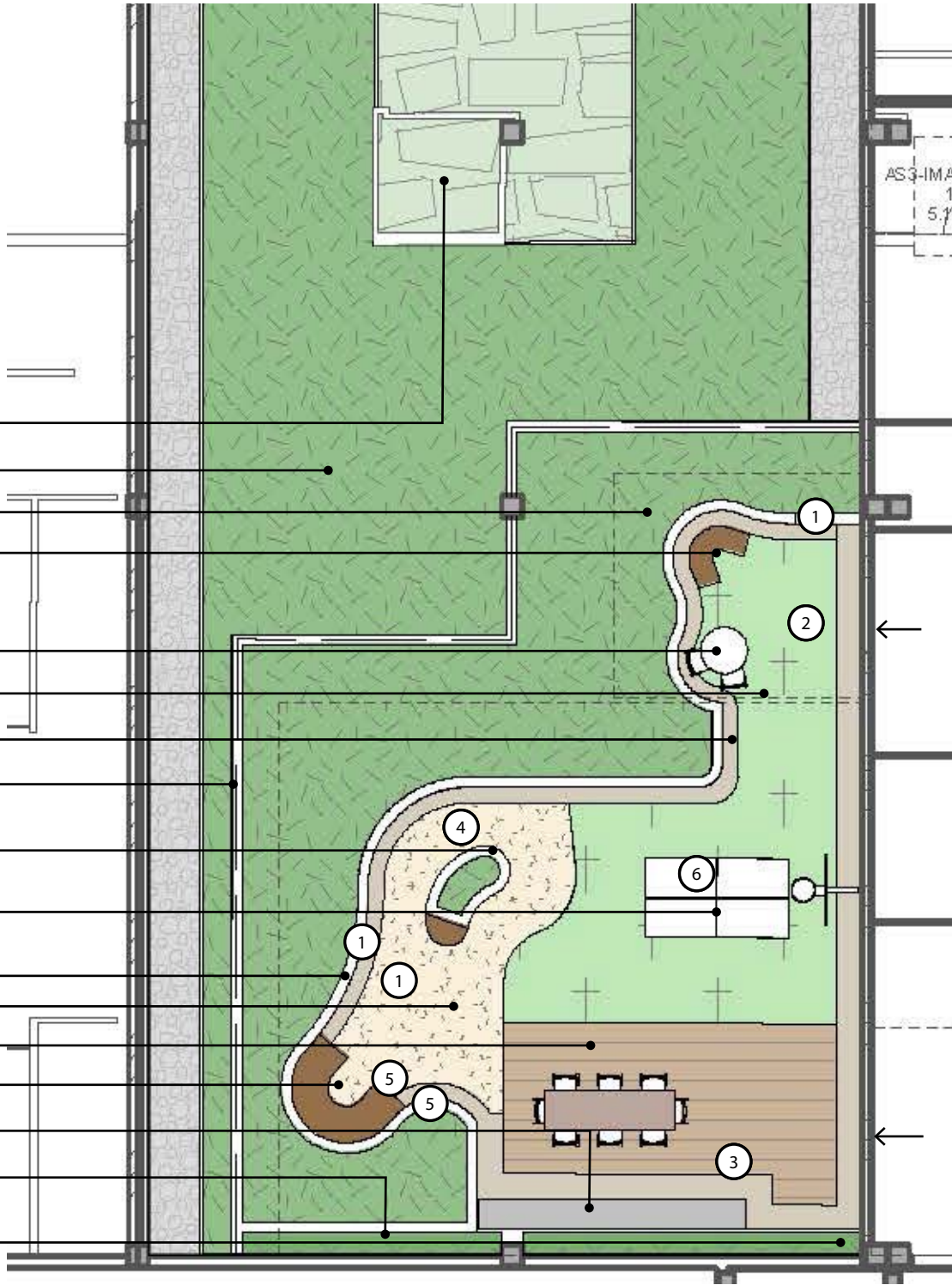
3.4 IPU COURTYARD

JHH COURTYARD #3 (EASTERN)

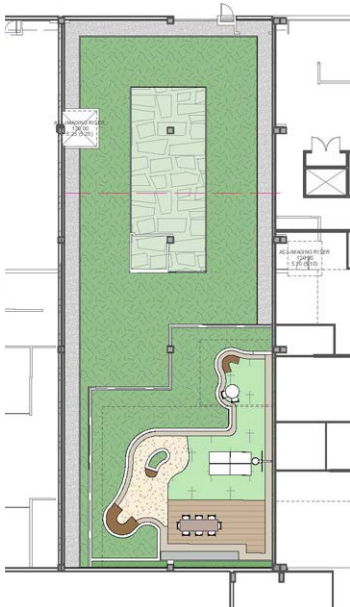
Courtyard #3 The courtyard is split into two secure areas; IPU Courtyard and JHH # 3 Courtyard. It offers future proofing to the JHH courtyard allowing accessibility to future ICU Patients, whilst still providing a planted edge with screening. It also uses the same design intent and materials as Courtyard #2.

The IPU courtyard continues the material language configuring active and passive spaces which responds to Functional Design Breif requirements. This courtyard provides secure outdoor areas for programmed activities, play and relaxation. Including passive areas, for seating in landscaped garden beds; and active areas that encourage games and exercise.

- Stone pavers with gravel and creepers
- Meadow grasses boundary planting
- Sensory planting
- Private, relaxing seating nook
- Flexible one on one seating area
- Sliding door (same style as screening fence)
- Bounding concrete band
- Screening fence and planting
- Kitchen gardens with crushed gravel
- Flexible active space for table tennis and basketball with synthetic turf
- Metal planter wall
- Coloured softfall
- Timber deck for outdoor dining
- Lounging seating nook
- BBQ and storage area
- Planter with climbers to SS wires
- Low level planting infront of window



For number references refer to precedent images



Courtyard Extent



Stone steppers



Planter edging



Artificial Turf

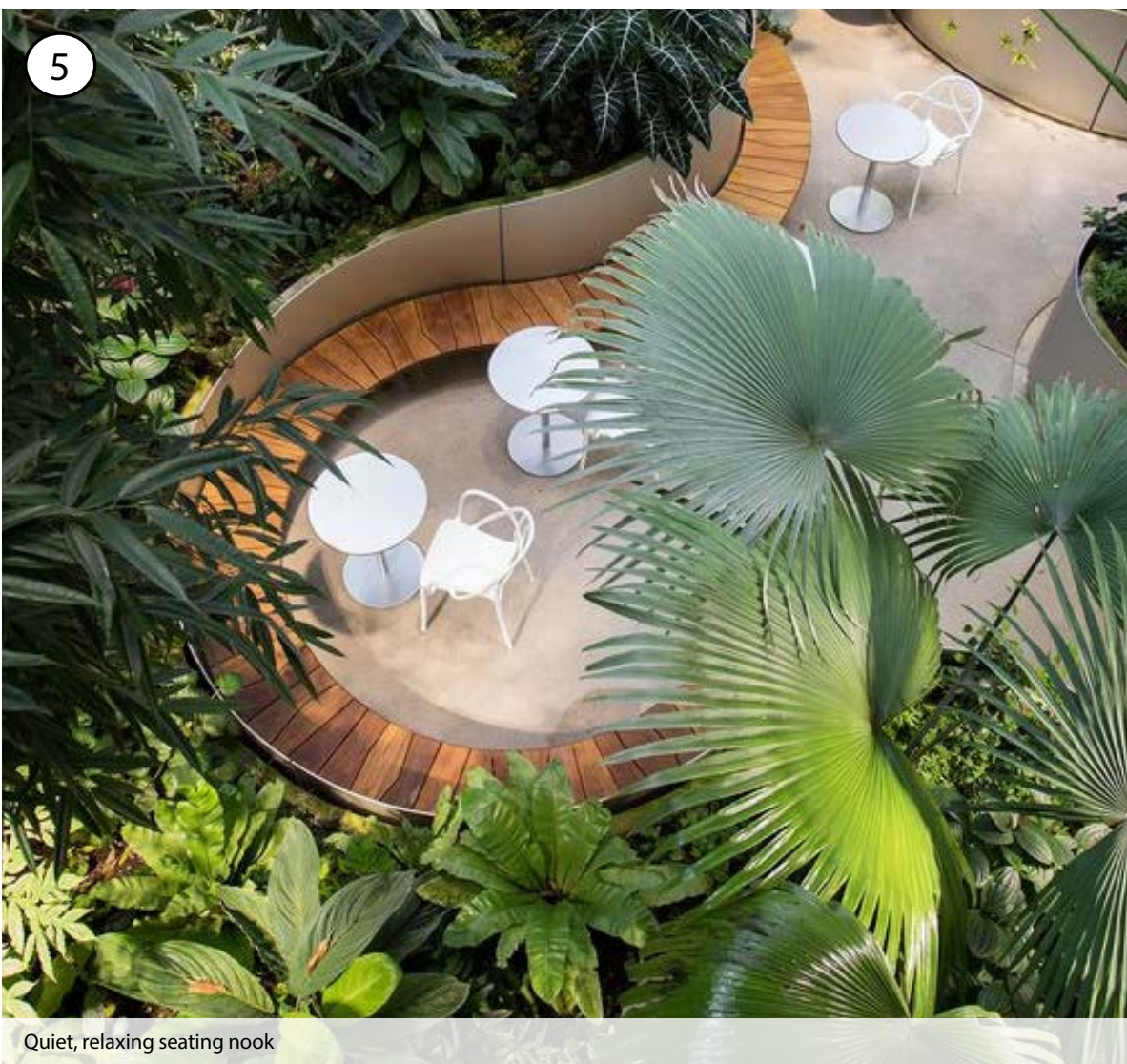
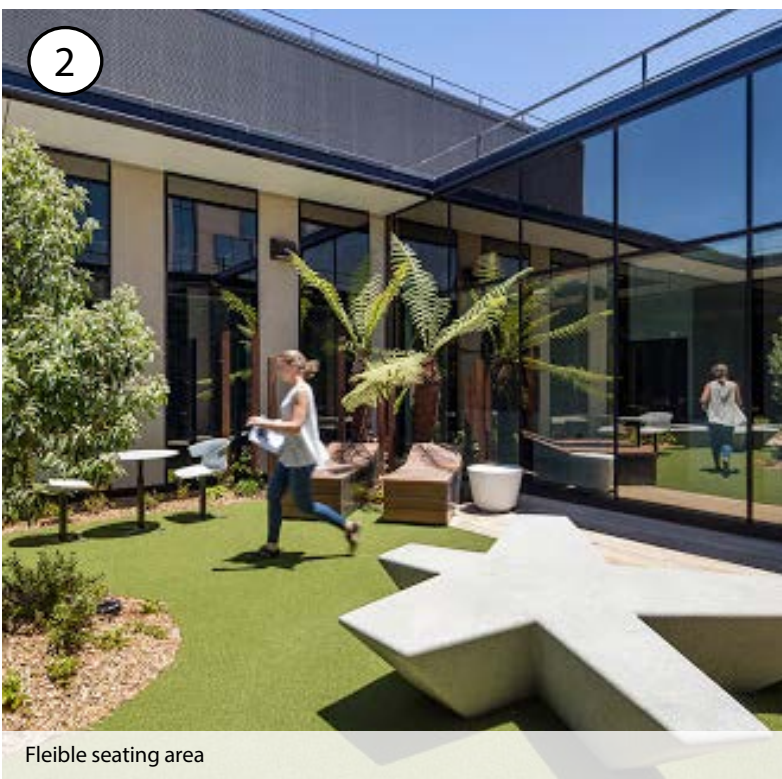
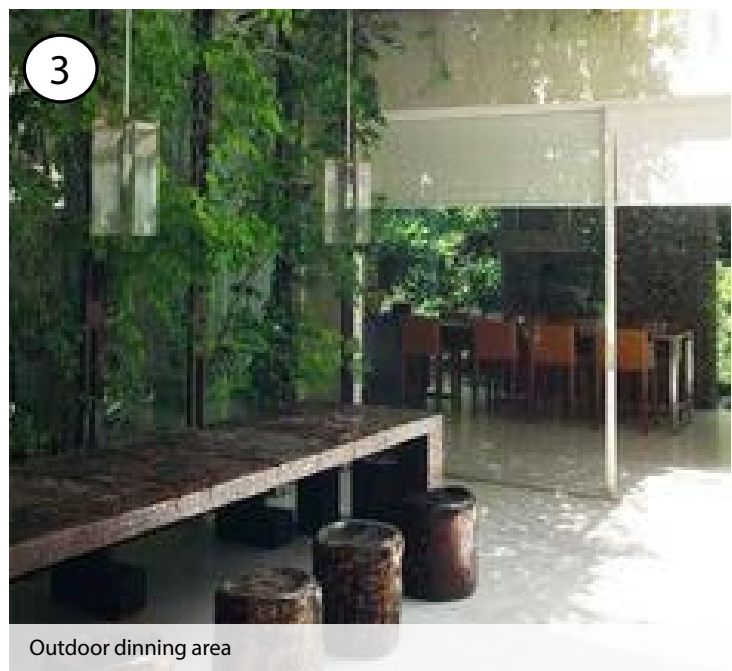


Softfall



Timber deck

PRECEDENT IMAGES



3.5 ELEVATED GARDEN LANDSCAPE PLAN

The Elevated Garden will be the vibrant Green Heart of JHHIP, creating a safe and peaceful environment that brings a familiar 'garden' feel and scale which introduces as much greenery as possible to allow for both individuals and small groups a rest-bit and escape back to nature.

The Elevated Gardens host staff, visitors, patients and the wider community in myriad of ways: whether it is meeting, playing, dining or lounging in creating a place for engagement and connection. The Garden provides for;

- shade under a leafy canopy,
 - formal & informal seating,
 - extensive planting,
 - bushland clumps,
 - native planting for richness and complexity,
 - food outlet,
 - lounge lawn,
 - enclosed garden spaces
- Varied and flexible seating pods spaces to suit different sized groups and different privacy needs



LEGEND

- | | | | |
|---|---|---|--|
| ① Large format unit paving to main pedestrian walkways | ⑥ Open Bushland mass planting raised bed with grasses, groundcovers, shrubs and trees on mounded soil with masonry walls | ⑩ Raised lawn with access ramp | ⑮ Opportunity for informal seating with flexible furniture |
| ② Small format unit paving to seating and dwelling spaces | ⑦ Open Bushland and senory mass planting raised bed with grasses, groundcovers, shrubs and trees on mounded soil with masonry walls | ⑪ Skylights | ⑯ Lookouts |
| ③ Crushed gravel paving to seating and dwelling spaces | ⑧ Mass planting bed with grasses, groundcovers, and low shrubs. | ⑫ Stairs to level 2 through-link | ⑰ Link to HRMI |
| ④ Timber decking to seating and dwelling spaces | ⑨ Seating wall with timber top battens | ⑬ Lift and stairs to levels above and below | ⑱ Landscape Planter with intergrated balustrade |
| ⑤ Intimate seating pods with wall bench seating | | ⑭ Indoor dinning/retail opening onto garden | |



1:400@ A3

PRECEDENT IMAGES



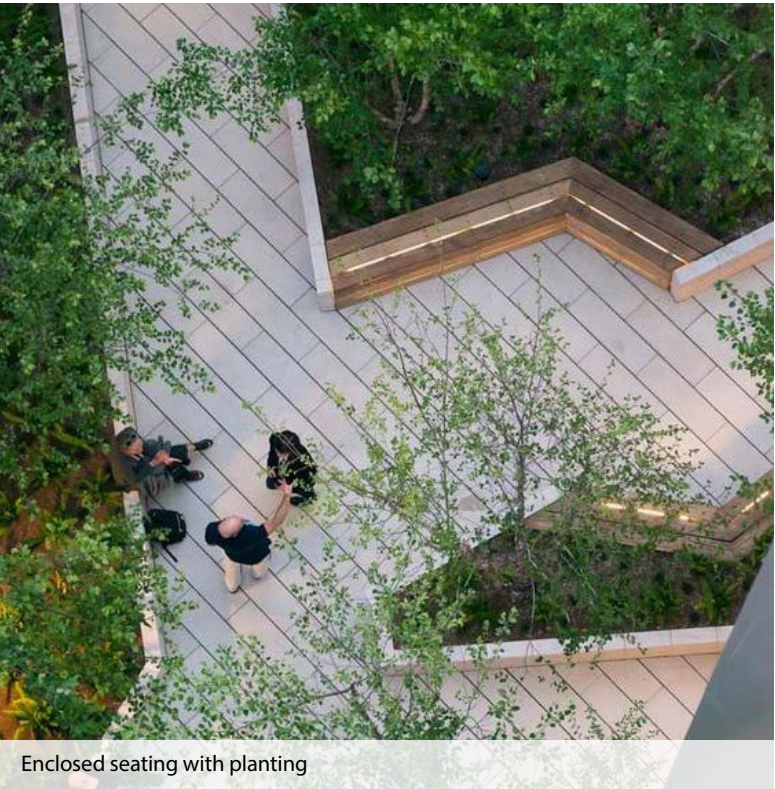
Raised lawn



Planter walls



Seating nook surrounded by native planting



Enclosed seating with planting



Raised planting beds



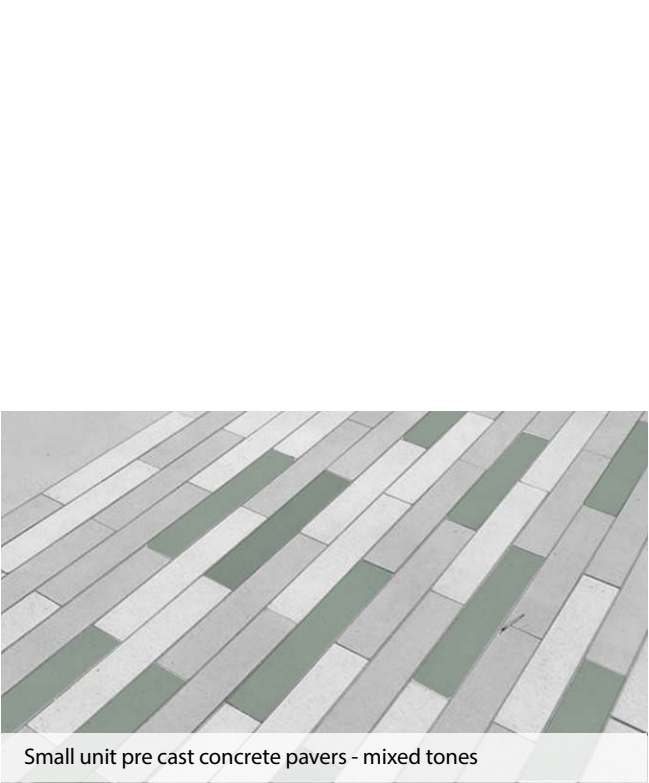
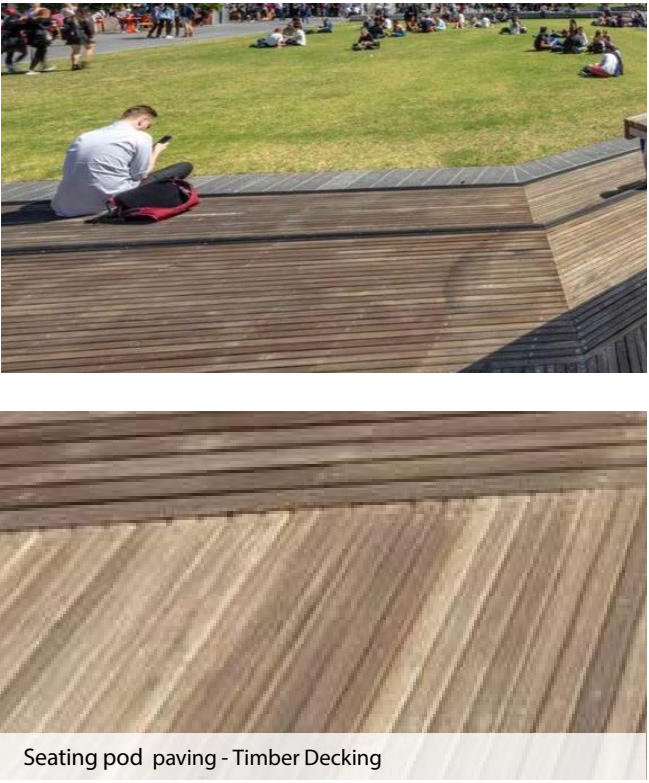
Mass boundary planting



Native planting area

MATERIAL PALETTE

The hardscape surface treatment choices consist of high quality, robust paving materials to act as a precedent for future development through the precinct. These materials are a considered composition of natural and composites on a restrained palette of timber, stone, gravel and concrete, allows the planting to dominate, reinforcing the feeling of a lush and refined oasis.



PLANTING STRATEGY

The Elevated Garden planting provides a bushland environment that is inspired by the surrounding sites bushland communities of Smooth Barked Apple - Red Bloodwood Open Forest, Smooth Barked Apple Sydney Peppermint - Turpentine Forest and the Spotted Gum Ironbark Open Forest back into the courtyards. Bringing the bushland look and feel into the courtyards while also implementing shrubs, ground covers and grasses with varying seasonal flowering to allow the elevated garden to have an all year round seasonal colour change. The Elevated Garden also implements pockets of sensory planting that allows the users to interact with, enjoy and observe.

The proposed planting mix is preliminary and subject to further refinement during detail design.



Banksia spinulosa



Grevillea 'Gold Cluster'



Cupaniopsis anacardioides



Anigozanthos hybrid 'Amber Velvet'



Doryanthes excelsa



Elaeocarpus reticulatus



Doodia aspera



Dianella caerulea



Telopea speciosissima



Adiantum aethiopicum



Myoporum parvifolium



Poa labillardieri

ELEVATED GARDEN					
AREA- 2,970m2					
PLANT CODE	BOTANICAL NAME	COMMON NAME	MATURE HEIGHT AND SPREAD	CONTAINER SIZE	PLANTS PER M2
TREES					
ALL tor	Allocasuarina torulosa	Forest Oak	10m x 7m	100L	as shown
TRI laur	Tristaniopsis laurina	Water Gum	15m x 6m	100L	as shown
WAT flo	Waterhousea floribunda	Weeping Lilly Pilly	10m x 8m	100L	as shown
ELA ret	Elaeocarpus reticulatus	Blueberry Ash	12m x 5m	100L	as shown
EUC mol	Eucalyptus moluccana	Grey Box	15m x 5m	100L	as shown
CUP ana	Cupaniopsis anacardioides	Tuckeroo	12m x 5m	100L	as shown
BAN int	Banksia integrifolia	Coastal Banksia	15m x 6m	200L	as shown
BRA jer	Brachychiton 'Jerilderie Red'	Jerilderie Red	9m x 7m	100L	as shown
OLE eur	Olea europea	Common Olive	7m x 4m	200L	as shown
PYR sou	Pyrus 'Southworth Dancer'	Southworth Dancer	7m x 4.5m	200L	as shown
LAG nat	Lagerstroemia indica x L.fauriei 'Natchez'	Natchez	6m x 6m	100L	as shown
SHRUBS					
ACA myr	Acacia myrtifolia	Red-Stemmed Wattle	3m x 3.0m	300mm	0.15
ACA ter	Acacia terminalis	Sunshine Wattle	3m x 2m	300mm	0.25
ACA uli	Acacia ulicifolia	Prickly Moses	2m x 2m	300mm	0.25
ACM smi	Acmena smithii	Common Lilly Pilly	5m x 3m	300mm	0.15
BAN spi	Banksia spinulosa	Hairpin Banksia	3m x 2.5m	300mm	0.2
CAL lit	Callistemon 'Little John'	Bottlebrush	0.90m x 1.5m	300mm	0.75
DAV uli	Daviesia ulicifolia	Gorse Bitter Pea	2m x 1m	300mm	1
DOR exc	Doryanthes excelsa	Gymea Lily	4m x 2m	300mm	0.25
EPA pul	Epacris pulchella	NSW Coral Heath	1.5m x 1m	300mm	1
GRE GC	Grevillea 'Gold Cluster'	Gold Cluster Grevillea	0.3m x 1m	300mm	1
LEP tri	Leptospermum trinervium	Slender Tea- tree	6m x 1-6m	300mm	0.5
LEU lan	Leucopogon lanceolatus	Lance-leaved beared heath	2m x 1m	300mm	1
LIC ram	Licuala ramsayi	Fan Palm	15m High	300mm	1
LOM sil	Lomatia silaifolia	Wild Parsely	6m x 3m	300mm	0.15
MAC com	Macrozamia communis	Burrawang	2.0m x 2.0m	300mm	0.25
PER lin	Persoonia linearis	Narrow Leaved Geebung	3m x 0.7m	300mm	1.25
PUL vil	Pultenaea villosa	Hairy Pea Bush	2m x 3m	300mm	0.15
TEL spe	Telopea speciosissima	Waratah	3m x 3m	300mm	0.2
XAN lat	Xanthorrhoea latifolia	Grass Tree	2m x 1.5m	150mm	0.15
GRASSES & GROUNDCOVERS					
ANI vel	Anigozanthos hybrid 'Amber Velvet'	Anigozanthos Amber Velvet	0.50m x 0.40m	150mm	5
ANI gol	Anigozanthos hybrid 'Everlasting Gold'	Anigozanthos Everlasting Gold	0.50m x 0.40m	150mm	5
AUS ful	Austrodanthonia fulva	Wallaby Grass	0.10m x 0.9m	150mm	3
BAU art	Baumea articulata	Jointed Twig Rush	2.5m x 2m	150mm	0.5
CAR app	Carex appressa	Tall Sedge	1m x 0.80m	150mm	3
CHR api	Chryscephalum apiculatum	Yellow Buttons	0.3m x 0.5m	150mm	5
CYM ref	Cymbopogon refractus	Barbed Wire Grass		150mm	5
DIA cae	Dianella caerulea var. producta	Blue Flax Lily	1m x 2m	150mm	0.5
DIC mic	Dichelachne micrantha	Short Haired Plume Grass		150mm	5
ECH cae	Echinopogon caespitosus	Hedgehog Grass		150mm	5
ENT str	Entolasia stricta	Wiry Panic	0.50m x 0.30m	150mm	5
HIB sca	Hibbertia scandens	Snake Vine	3m x 5m	150mm	0.5
IMP cyl	Imperata cylindrica	Blady grass	1.0m x 0.3m	150mm	5

ISO nod	Isolepis nodosa	Knobby Club Rush	1m x 1m	150mm	3
JUN usi	Juncus usitatus	Tussock Rush	1.2m x 0.5m	150mm	5
LIR mus	Liriope muscari	Lily Turf	0.5m x 0.5m	150mm	5
LOM lon	Lomandra longifolia	Spiny-Headed Mat-Rush	1.2m x 1.0m	150mm	2
MYO par	Myoporum parvifolium 'Yareena'	Yareena Creeping Boobialla	0.10m x 1m	150mm	2
POA lab	Poa labillardieri	Common Tussock Grass	1m x 0.5m	150mm	5
PRA pur	Pratia purpurascens	Whiteroot	0.20m x 2m	150mm	1
THE aus	Themeda australis	Kangaroo Grass	1m x 0.5m	150mm	5
VIO hed	Viola hederacea	Native Violet	0.15m x 1m	150mm	5
ZIE smi	Zieria smithii subsp smithii	Sandfly zieria	2m x 1m	300mm	2
SENSORY PLANTING					
ALL sch	Allium schoenoprasum	Chives	0.6m x 0.1m	150mm	10
ALO ver	Aloe vera barbadensis	Aloe	0.6m x 0.90m	150mm	3
BRA pac	Brachyscome 'Pacific Reef'	Native Daisy	0.2m x 0.3m	150mm	5
BRI max	Briza maxima	Greater Quaking Grass	0.6m x 0.3m	150mm	5
CAL off	Calendula officinalis	Pot Marigold	0.6m x 0.6m	150mm	5
COS atr	Cosmos atosanguineus	Cholocate cosmos	0.75m x 0.45m	150mm	5
HEL ita	Helichrysum italicum	Curry Plant	0.90m x 0.50m	150mm	5
HOU cor	Houttuynia cordata 'Chameleon'	Chameleon Plant	0.30m x 0.30m	150mm	5
LAV sp	Lavandula angustifolia	Lavender	0.90m x 0.90m	150mm	3
MIS oli	Miscanthus oligostachyus 'Nanus Variegatus'	Miscanthus		150mm	5
PEL cri	Pelargonium crispum	Lemon Scented Geranium		150mm	5
PEN alo	Pennisetum alopecuroides	Fountain Grass		150mm	5
PHL fru	Phlomis fruticosa	Jerusalem Sage		150mm	5
ROS off	Rosmarinus officinalis	Rosemary		150mm	5
SAL arg	Salvia argentea	Silver Sage		150mm	5
STA byz	Stachys byzantina	Lamb's Ear's		150mm	5
FERNS					
ASP aus	Asplenium australasicum	Bird's Nest Fern	1.2m x 1.2m	300mm	1
BLE car	Blechnum cartilagineum	Soft Water Fern	1.5m x 1.5m	300mm	0.75
DOO asp	Doodia aspera	Prickly Rasp Fern	0.4m x 0.6m	150mm	5
CAL dub	Calochlaena dubia	False Bracken	2m x 1.5m	300mm	0.75

ASB COURTYARD #1 (LEVEL 01+02) WESTERN COURTYARD

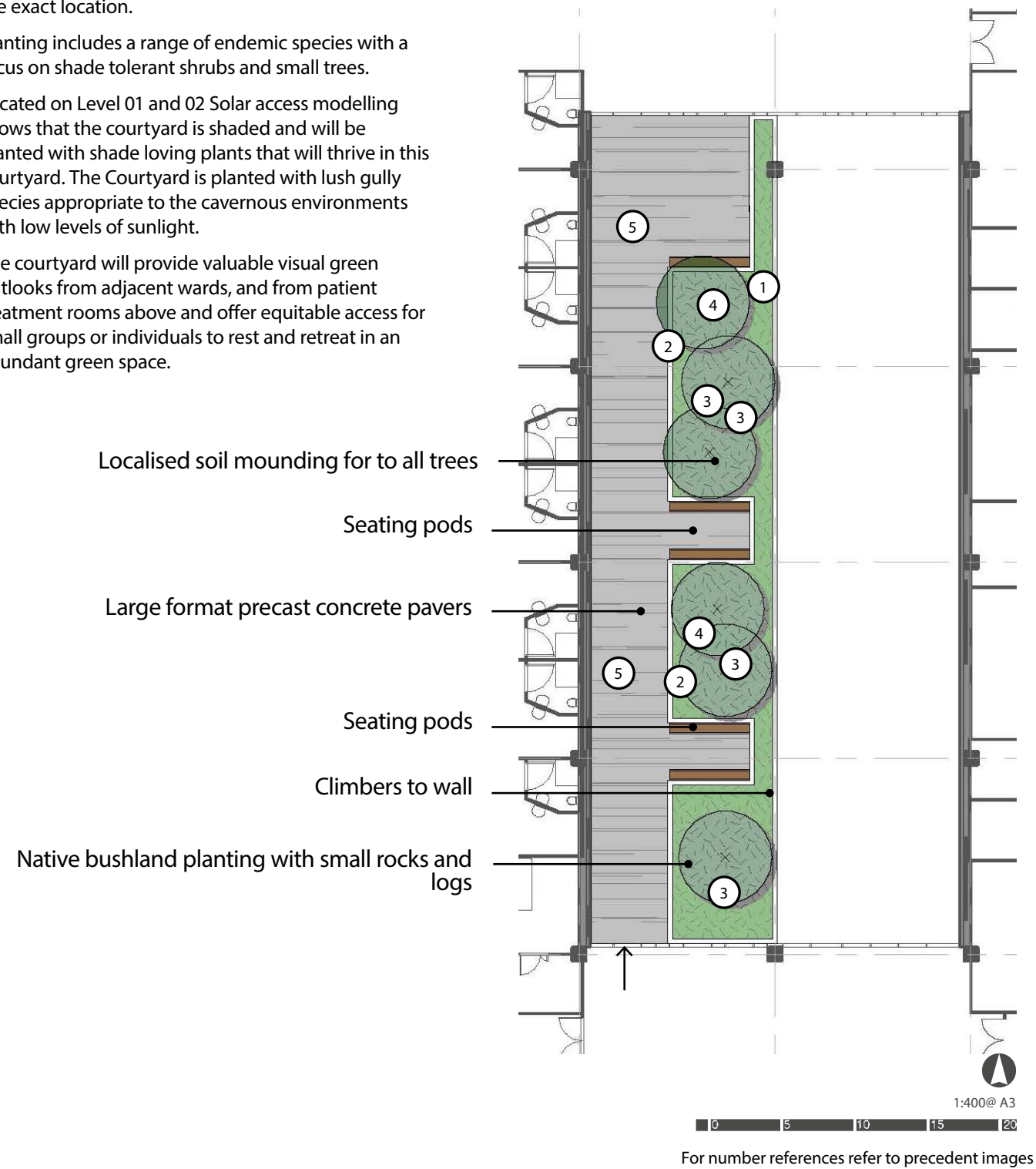
A micro-forest in the heart of the ASB, made of native species that take direct inspiration from the adjacent undisturbed native bushland reserve, serving as an expressive reminder of the bushland that once occupied the exact location.

Planting includes a range of endemic species with a focus on shade tolerant shrubs and small trees.

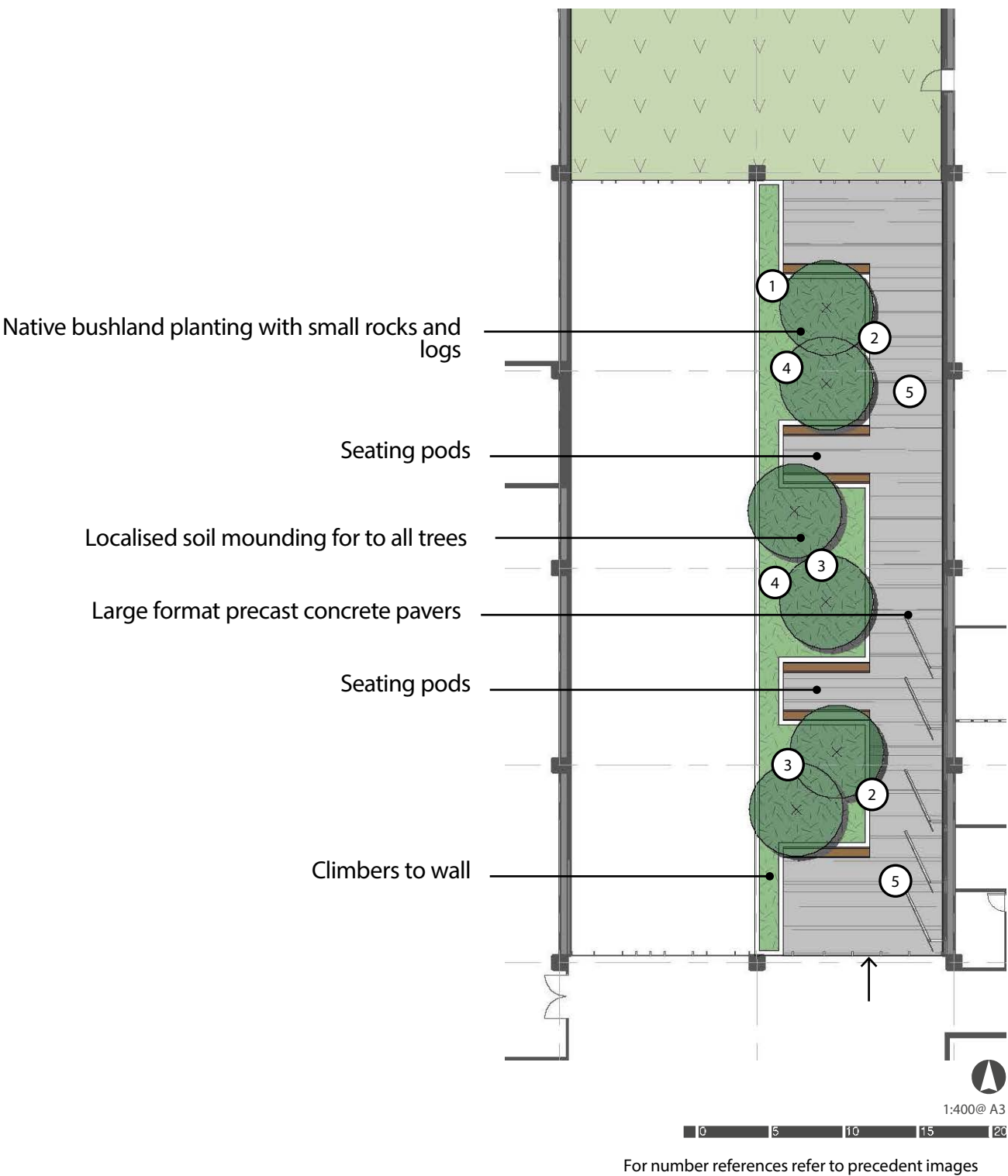
Located on Level 01 and 02 Solar access modelling shows that the courtyard is shaded and will be planted with shade loving plants that will thrive in this courtyard. The Courtyard is planted with lush gully species appropriate to the cavernous environments with low levels of sunlight.

The courtyard will provide valuable visual green outlooks from adjacent wards, and from patient treatment rooms above and offer equitable access for small groups or individuals to rest and retreat in an abundant green space.

LEVEL 01



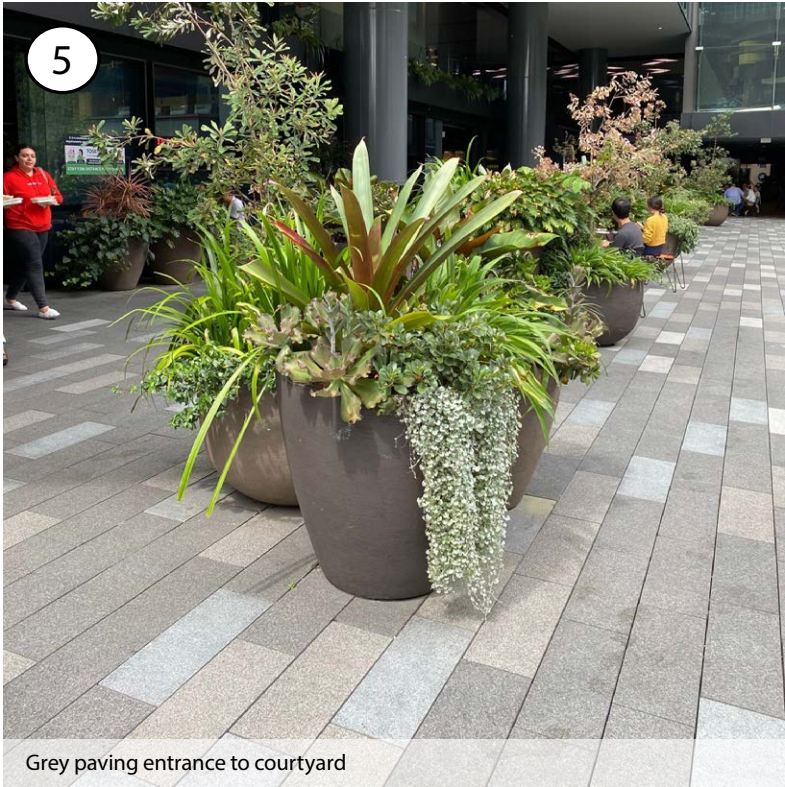
LEVEL 02



PRECEDENT IMAGES



Pre-cast concrete pavers



Grey paving entrance to courtyard



Layered planting



Rich layered planting



Visual connection to landscape



Raised concrete planters



Bushland like setting

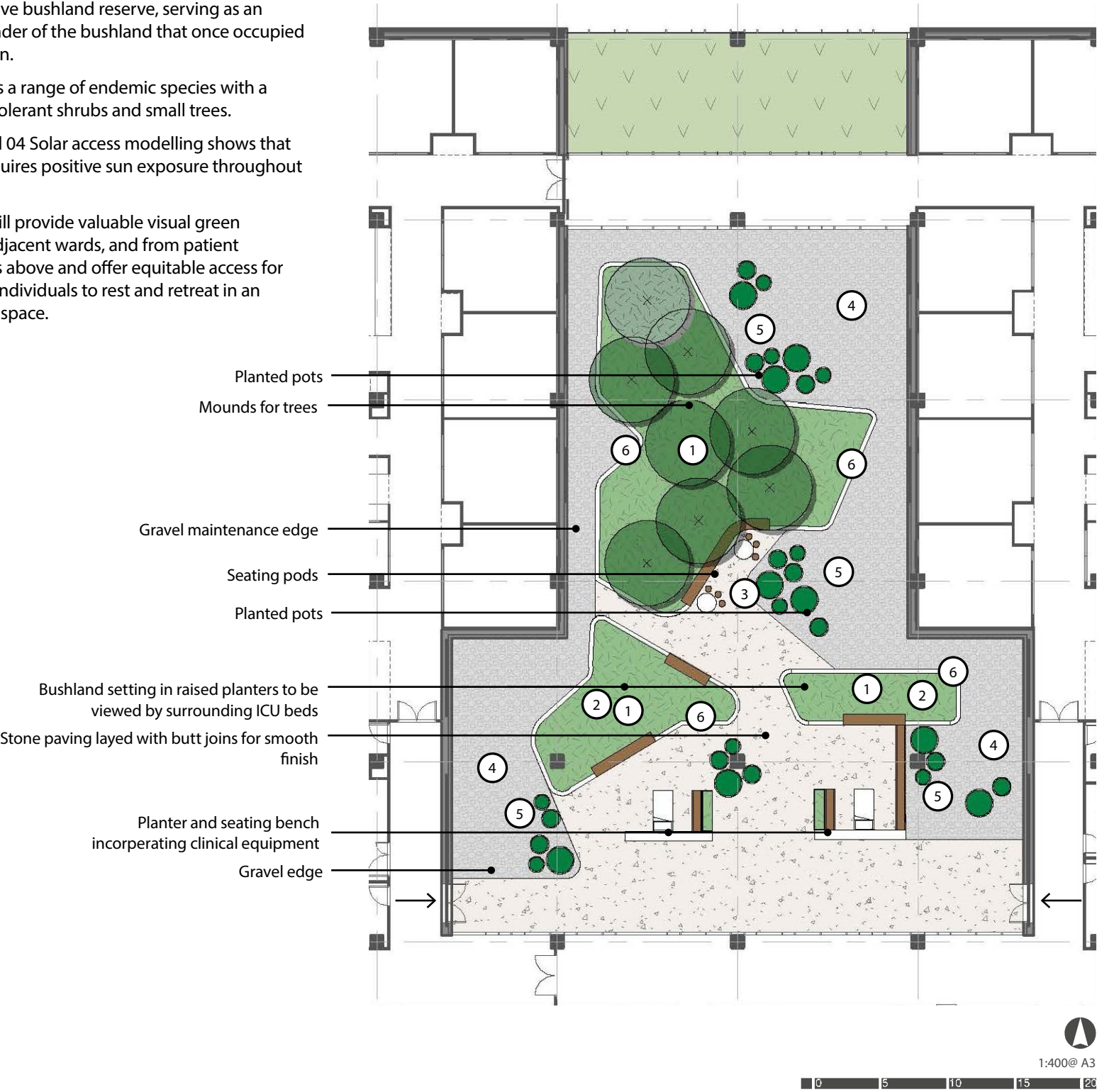
ASB COURTYARD #2 (LEVEL 04) CENTRAL COURTYARD

A micro-forest in the heart of the ASB, made of native species that take direct inspiration from the adjacent undisturbed native bushland reserve, serving as an expressive reminder of the bushland that once occupied the exact location.

Planting includes a range of endemic species with a focus on shade tolerant shrubs and small trees.

Located on Level 04 Solar access modelling shows that the courtyard acquires positive sun exposure throughout the year.

The courtyard will provide valuable visual green outlooks from adjacent wards, and from patient treatment rooms above and offer equitable access for small groups or individuals to rest and retreat in an abundant green space.



For number references refer to precedent images



Large format pre cast concrete pavers



Large format pre cast concrete pavers



Rock gravel



Concrete planter wall

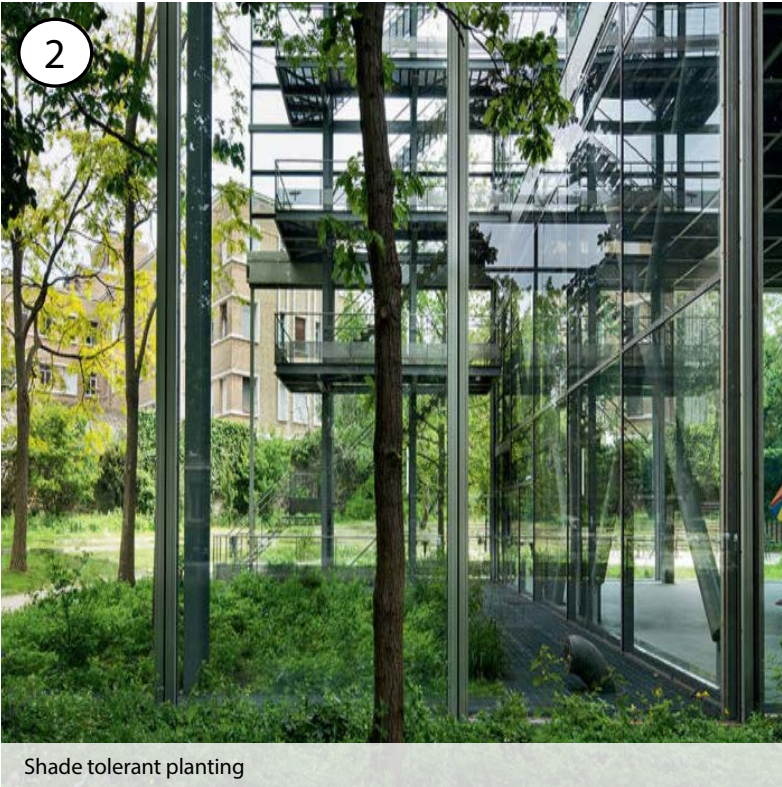


25% of crushed glass mixed in with gravel area



Paving patterning

PRECEDENT IMAGES



ASB COURTYARD #3 (LEVEL 00) EASTERN COURTYARD

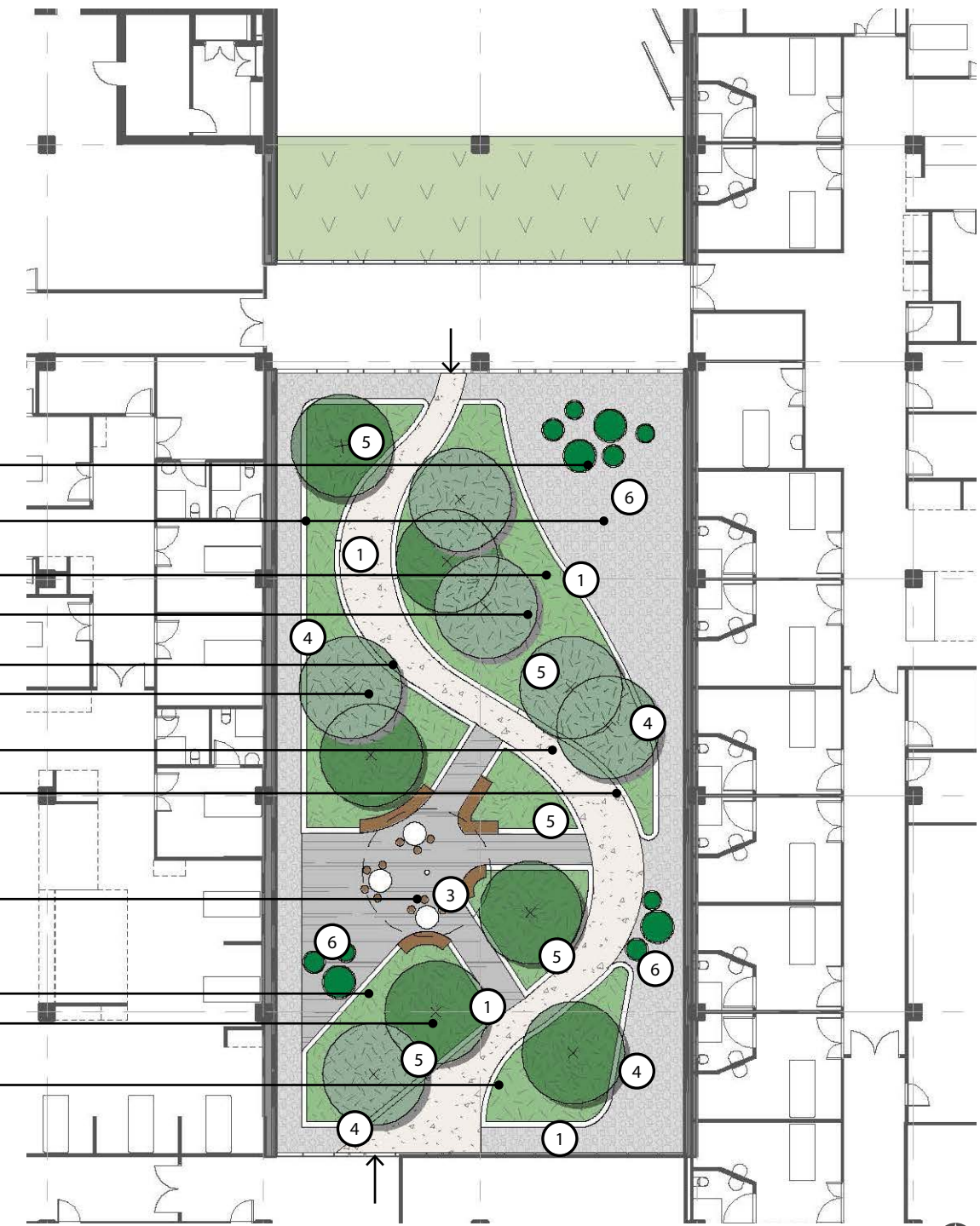
A micro-forest in the heart of the ASB, made of native species that take direct inspiration from the adjacent undisturbed native bushland reserve, serving as an expressive reminder of the bushland that once occupied the exact location.

Planting includes a range of endemic species with a focus on shade tolerant shrubs and small trees.

Located on Level 00 Solar access modelling shows that the courtyard is shaded and will be planted with shade loving plants that will thrive in this courtyard. The Courtyard is planted with lush gully species appropriate to the cavernous environments with low levels of sunlight.

The courtyard will provide valuable visual green outlooks from adjacent wards, and from patient treatment rooms above and offer equitable access for small groups or individuals to rest and retreat in an abundant green space.

- Planted pots
- Gravel maintenance edge
- Private seating nook
- Mounds for larger tree planting
- Sensory planting
- Raised planters with mounds for trees with bushland planting
- Paving Inserts - Interactive education
- Concrete paving with grey tonal exposed aggregate
- Seating benches under shade structure with flexible seating
- Planted pots
- Raised planters with mounds for trees with bushland planting
- Concrete paving with grey tonal exposed aggregate



1:400@ A3

For number references refer to precedent images



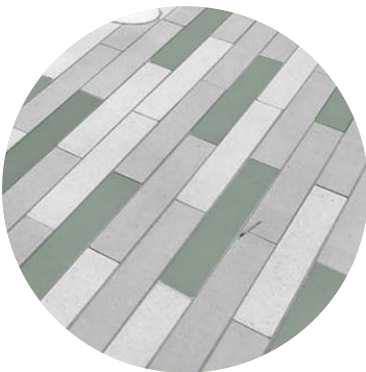
Rock / gravel



Crushed glass (green) mixed into gravel area - 20% minimum

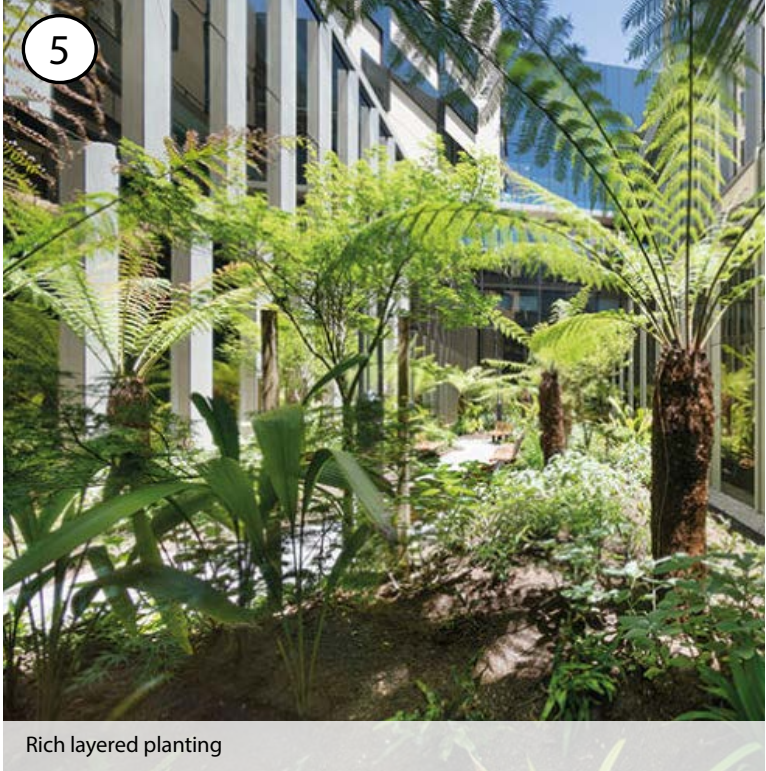
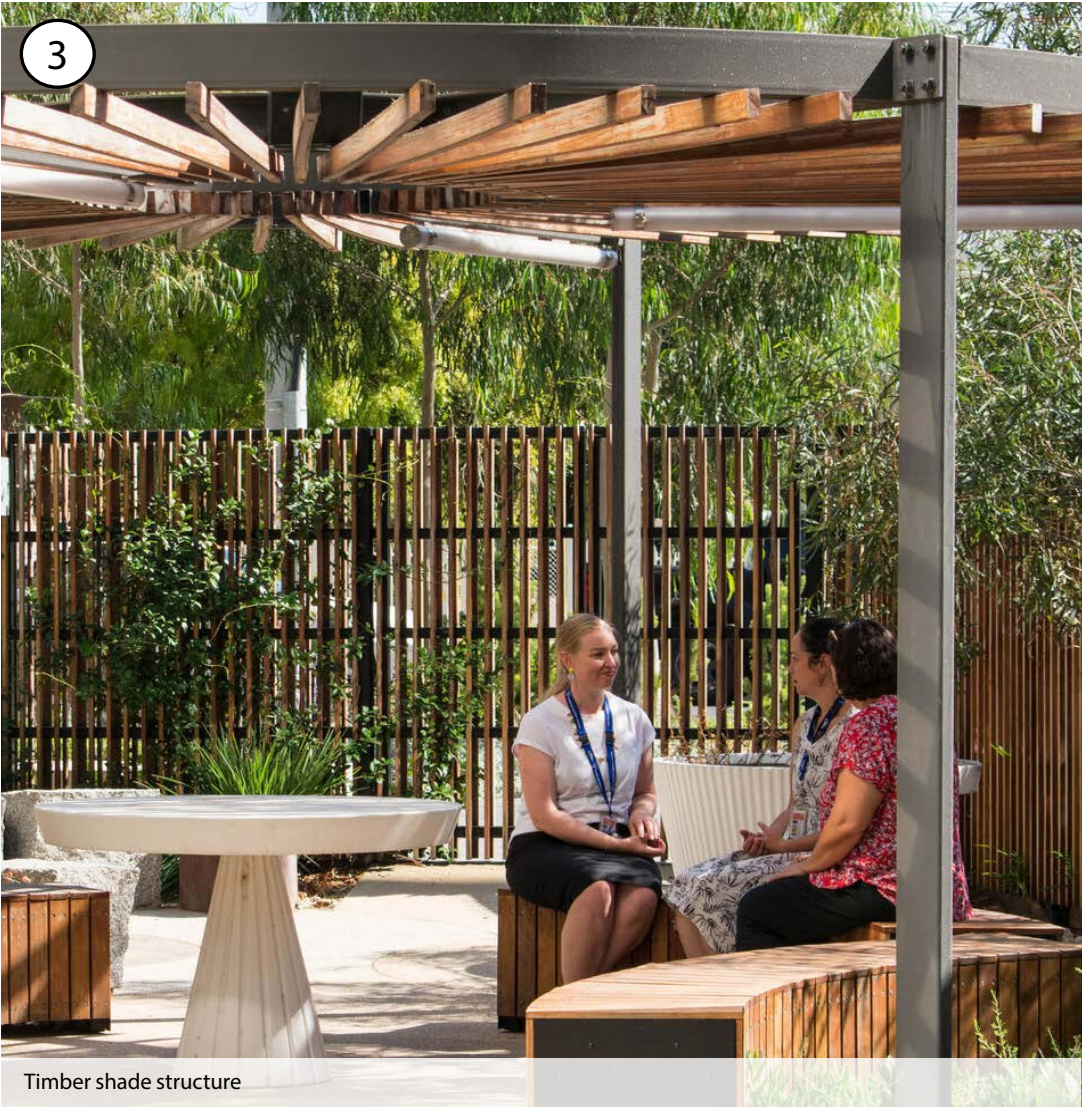
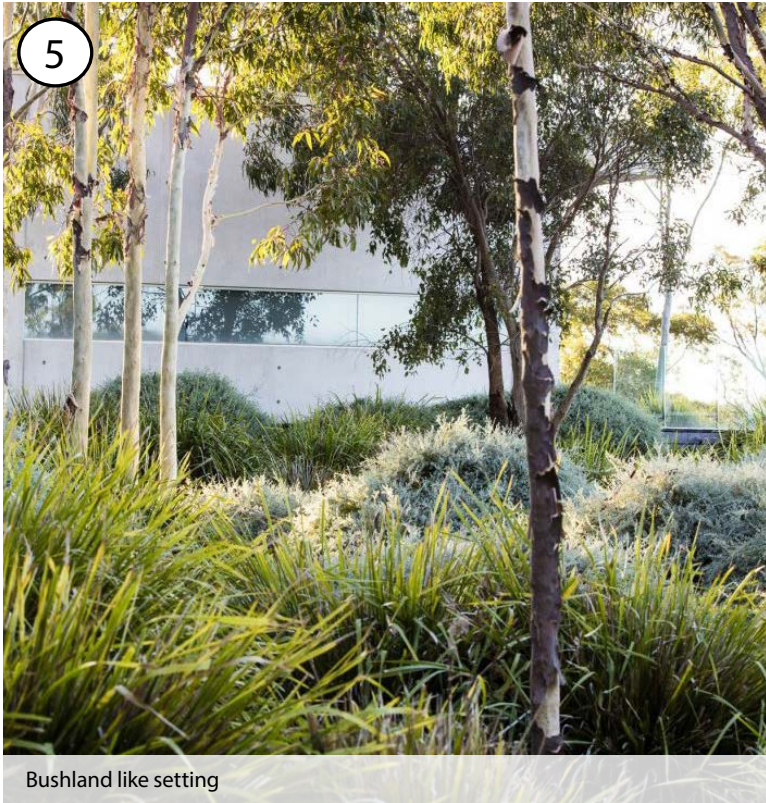


Precast concrete paver with exposed aggregate



Large format pre cast concrete pavers
20% minimum patterning to be green paving

PRECEDENT IMAGES



PLANTING STRATEGY

The ASB courtyards planting strategy provides a bushland environment that is inspired by the surrounding sites bushland communities of Smooth Barked Apple - Red Bloodwood Open Forest, Smooth Barked Apple Sydney Peppermint - Turpentine Forest and the Spotted Gum Ironbark Open Forest back into the courtyards. Bringing the bushland look and feel into the courtyards while also implementing shrubs, ground covers and grasses with varying seasonal flowering to allow the courtyards to have an all year round seasonal effect. The ASB courtyards also have pockets of sensory planting that is hidden within the bushland landscape allowing users to discover various sensory species upon their movement in and around the courtyard. The various sensory planting proposed in the ASB courtyards provide the sensory planting both close to the path for smell and touch interaction but also hidden away amongst the bushland not accessible giving a sense of discovery for your sense of sight.

The proposed planting mix is preliminary and subject to further refinement during detail design.



Carex appressa



Doodia aspera



Imperata cylindrica



Banksia spinulosa



Daviesia ulicifolia



Doryanthes excelsa



Dianella caerulea



Myoporum parvifolium



Cupaniopsis anacardioides



Elaeocarpus reticulatus



Lomandra longifolia



Lavendula angustifolia

ASB COURTYARDS					
AREA- 1,701.52m2					
PLANT CODE	BOTANICAL NAME	COMMON NAME	MATURE HEIGHT AND SPREAD	CONTAINER SIZE	PLANTS PER M2
SHADE TOLERANT SPECIES					
LEVEL 00 COURTYARD- 60-70%					
LEVEL 01 COURTYARD- 50%					
LEVEL 04 COURTYARD- 0%					
TREES					
ALL tor	Allocasuarina torulosa	Forest Oak	10m x 7m	100L	as shown
TRI laur	Tristaniopsis laurina	Water Gum	15m x 6m	100L	as shown
WAT flo	Waterhousea floribunda	Weeping Lilly Pilly	10m x 8m	100L	as shown
ELA ret	Elaeocarpus reticulatus	Blueberry Ash	12m x 5m	100L	as shown
EUC mol	Eucalyptus moluccana	Grey Box	15m x 5m	100L	as shown
CUP ana	Cupaniopsis anacardioides	Tuckeroo	12m x 5m	100L	as shown
CYA coo	Cyathea cooperi	Lacy Tree Fern	15m x 5m	100L	as shown
BAN int	Banksia integrifolia	Coastal Banksia	15m x 6m	200L	as shown
BRA jer	Brachychiton 'Jerilderie Red'	Jerilderie Red	9m x 7m	100L	as shown
OLE eur	Olea europea	Common Olive	7m x 4m	200L	as shown
PYR sou	Pyrus 'Southworth Dancer'	Southworth Dancer	7m x 4.5m	200L	as shown
LAG nat	Lagerstroemia indica x L.fauriei 'Natchez'	Natchez	6m x 6m	100L	as shown
SPOTTED GUM - GREY IRONBARK OPEN FOREST - SHRUBS					
ACA uli	Acacia ulicifolia	Prickly Moses	2m x 2m	300mm	0.5
BAN spi	Banksia spinulosa	Hairpin Banksia	3m x 2.5m	300mm	0.5
BRE obl	Breynia oblongifolia	Coffee Bush	3m x 3m	300mm	0.3
DAV uli	Daviesia ulicifolia	Gorse Bitter Pea	2m x 1m	300mm	1
DOD tri	Dodonaea triquetra	Large-Leaf Hop Bush	3m x 2m	300mm	0.5
EPA pul	Epacris pulchella	NSW Coral Heath	1.5m x 1m	300mm	1
MAC com	Macrozamia communis	Burrawang	2.0m x 2.0m	150mm	0.5
PUL euc	Pultenaea euchila	Large-flower Bush-pea	1.5m x 2m	300mm	0.5
SMOOTH-BARKED APPLE - RED BLOODWOOD OPEN FOREST - SHRUBS					
ACA ter	Acacia terminalis	Sunshine Wattle	3m x 2m	300mm	0.5
ACA uli	Acacia ulicifolia	Prickly Moses	2m x 2m	300mm	0.5
BAN spi	Banksia spinulosa	Hairpin Banksia	3m x 2.5m	300mm	0.5
LEP tri	Leptospermum trinervium	Slender Tea- tree	6m x 1-6m	300mm	1
LOM sil	Lomatia silaifolia	Wild Parsely	6m x 3m	300mm	0.3
PER lev	Persoonia levis	Broad-Leaved Geebung	3m x 1m	300mm	1
PER lin	Persoonia linearis	Narrow Leaved Geebung	3m x 0.7m	300mm	1
PUL euc	Pultenaea euchila	Large-flower Bush-pea	1.5m x 2m	300mm	0.5
TET jun	Tetradlea juncea	Black-eyed Susan	0.5m x 0.3m	300mm	4
SMOOTH BARKED APPLE - SYDNEY PEPPERMINT -TURPENTINE FOREST SHRUBS					
ACA myr	Acacia myrtifolia	Red-Stemmed Wattle	3m x 3.0m	300mm	0.15
BAN spi	Banksia spinulosa	Hairpin Banksia	3m x 2.5m	300mm	0.25
BRE obl	Breynia oblongifolia	Coffee Bush	3m x 3m	300mm	0.25
DAV uli	Daviesia ulicifolia	Gorse Bitter Pea	2m x 1m	300mm	0.15
DOD tri	Dodonaea triquetra	Large-Leaf Hop Bush	3m x 2m	300mm	0.2
LEP pol	Leptospermum polygalifolium	Lemon Scented Tea Tree	3m x 2m	300mm	0.75
LEU lan	Leucopogon lanceolatus	Lance-leaved beared heath	2m x 1m	300mm	1
XAN lat	Xanthorrhoea latifolia	Grass Tree	2m x 1.5m	150mm	0.25
ZIE smi	Zieria smithii subsp smithii	Sandfly zieria	2m x 1m	300mm	1

Endemic Shrubs					
ACA myr	Acacia myrtifolia	Red-Stemmed Wattle	3m x 3.0m	300mm	0.3
ACA ter	Acacia terminalis	Sunshine Wattle	3m x 2m	300mm	0.5
ACM smi	Acmena smithii	Common Lilly Pilly	5m x 3m	300mm	0.3
CAL lit	Callistemon 'Little John'	Bottlebrush	0.90m x 1.5m	300mm	0.8
DOR exc	Doryanthes excelsa	Gymea Lily	4m x 2m	300mm	0.5
Spotted Gum - Grey Ironbark Open Forest - Grasses & Groundcovers					
BIL sca	Billardiera scandens	Apple-berry	1.5m x 3m	150mm	0.3
ENT str	Entolasia stricta	Wiry Panic	0.50m x 0.30m	150mm	4
IMP cyl	Imperata cylindrica	Blady grass	1.0m x 0.3m	150mm	4
LEP lat	Lepidosperma laterale	Variable Sword Sedge	1.0m x 1.0m	150mm	1
LOM lon	Lomandra longifolia	Spiny-Headed Mat-Rush	1.2m x 1.0m	150mm	1
LOM muf	Lomandra multiflora subsp. multiflora	Many Flowered Mat-Rush	0.5m x 0.5m	150mm	2
MIC sti	Microlaena stipoides	Weeping Rice Grass	0.30m x 0.50m	150mm	2
ERI aus	Eriostemon australasius	Wax Flower	2m x 1m	300mm	1
GRE GC	Grevillea 'Gold Cluster'	Gold Cluster Grevillea	0.3m x 1m	300mm	1
LEP pol	Leptospermum polygalifolium	Lemon Scented Tea Tree	3m x 2m	300mm	0.5
LEP tri	Leptospermum trinervium	Slender Tea- tree	6m x 1-6m	300mm	1
LEU lan	Leucopogon lanceolatus	Lance-leaved beared heath	2m x 1m	300mm	1
LIC ram	Licuala ramsayi	Fan Palm	15m High	300mm	1
LOM sil	Lomatia silaifolia	Wild Parsely	6m x 3m	300mm	0.3
PER lev	Persoonia levis	Broad-Leaved Geebung	3m x 1m	300mm	1
PER lin	Persoonia linearis	Narrow Leaved Geebung	3m x 0.7m	300mm	1
PUL vil	Pultenaea villosa	Hairy Pea Bush	2m x 3m	300mm	0.3
TEL spe	Telopea speciosissima	Waratah	3m x 3m	300mm	0.3
TET jun	Tetralthea juncea	Black-eyed Susan	0.5m x 0.3m	300mm	4
XAN lat	Xanthorrhoea latifolia	Grass Tree	2m x 1.5m	150mm	0.8
Smooth-Barked Apple - Red Bloodwood Open Forest - Grasses & Groundcovers					
ENT str	Entolasia stricta	Wiry Panic	0.50m x 0.30m	150mm	4
IMP cyl	Imperata cylindrica	Blady grass	1.0m x 0.3m	150mm	4
LOM obl	Lomandra obliqua	Twisted Matrush	0.50m x 0.50m	150mm	2
THE aus	Themeda australis	Kangaroo Grass	1m x 0.5m	150mm	2
PTE esc	Pteridium esculentum	Bracken Fern	2m x 1.2m	150mm	1
Smooth Barked Apple - Sydney Peppermint - Turpentine Forest Grasses & Groundcovers					
DIA cae	Dianella caerulea var. producta	Blue Flax Lily	1m x 2m	150mm	0.5
DIC rep	Dichondra repens	Kidney Weed	0.15m x 1.8m	150mm	0.5
ENT str	Entolasia stricta	Wiry Panic	0.50m x 0.30m	150mm	4
IMP cyl	Imperata cylindrica	Blady grass	1.0m x 0.3m	150mm	4
MIC sti	Microlaena stipoides	Weeping Rice Grass	0.30m x 0.50m	150mm	2
PRA pur	Pratia purpurascens	Whiteroot	0.20m x 2m	150mm	0.5
VIO hed	Viola hederacea	Ivy-leaved Violet	0.15m x 1m	150mm	1

Endemic Grasses & Groundcovers					
ANI vel	Anigozanthos hybrid 'Amber Velvet'	Anigozanthos Amber Velvet	0.50m x 0.40m	150mm	4
ANI gol	Anigozanthos hybrid 'Everlasting Gold'	Anigozanthos Everlasting Gold	0.50m x 0.40m	150mm	4
AUS ful	Austrodanthonia fulva	Wallaby Grass	0.10m x 0.9m	150mm	4
BAU art	Baumea articulata	Jointed Twig Rush	2.5m x 2m	150mm	1
CAR app	Carex appressa	Tall Sedge	1m x 0.80m	150mm	0.5
CHR api	Chrysocephalum apiculatum	Yellow Buttons	0.3m x 0.5m	150mm	1
CYM ref	Cymbopogon refractus	Barbed Wire Grass	1m x 05m	150mm	3
DIA cae	Dianella caerulea var. producta	Blue Flax Lily	1m x 2m	150mm	5
DIC mic	Dichelachne micrantha	Short Haired Plume Grass	0.5m x 0.2m	150mm	5
ECH cae	Echinopogon caespitosus	Hedgehog Grass	0.3m x 0.2m	150mm	5
HIB sca	Hibbertia scandens	Snake Vine	3m x 5m	150mm	0.2
ISO nod	Isolepis nodosa	Knobby Club Rush	1m x 1m	150mm	1
JUN usi	Juncus usitatus	Tussock Rush	1.2m x 0.5m	150mm	3
LIR mus	Liriope muscari	Lily Turf	0.5m x 0.5m	150mm	1
MYO par	Myoporum parvifolium 'Yareena'	Yareena Creeping Boobialla	0.10m x 1m	150mm	2
POA lab	Poa labillardieri	Common Tussock Grass	1m x 0.5m	150mm	1
PRA pur	Pratia purpurascens	Whiteroot	0.20m x 2m	150mm	1
THE aus	Themeda australis	Kangaroo Grass	1m x 0.5m	150mm	3
VIO hed	Viola hederacea	Ivy-leaved Violet	0.15m x 1m	150mm	3
ZIE smi	Zieria smithii subsp smithii	Sandfly zieria	2m x 1m	300mm	1
Ferns					
ASP aus	Asplenium australasicum	Bird's Nest Fern	1.2m x 1.2m	300mm	1
BLE car	Blechnum cartilagineum	Soft Water Fern	1.5m x 1.5m	300mm	0.75
DOO asp	Doodia aspera	Prickly Rasp Fern	0.4m x 0.6m	150mm	1
CAL dub	Calochlaena dubia	False Bracken	2m x 1.5m	300mm	0.75
Sensory Planting					
ALL sch	Allium schoenoprasum	Chives	0.6m x 0.1m	150mm	5
ALO ver	Aloe vera barbadensis	Aloe	0.6m x 0.90m	150mm	1
BRA pac	Brachyscome 'Pacific Reef'	Native Daisy	0.2m x 0.3m	150mm	5
BRI max	Briza maxima	Greater Quaking Grass	0.6m x 0.3m	150mm	5
CAL off	Calendula officinalis	Pot Marigold	0.6m x 0.6m	150mm	2
COS atr	Cosmos atrosanguineus	Cholocate cosmos	0.75m x 0.45m	150mm	3
HEL ita	Helichrysum italicum	Curry Plant	0.90m x 0.50m	150mm	2
HOU cor	Houttuynia cordata 'Chameleon'	Chameleon Plant	0.30m x 0.30m	150mm	4
LAV sp	Lavandula angustifolia	Lavender	0.90m x 0.90m	150mm	1
MIS oli	Miscanthus oligostachyus 'Nanus Variegatus'	Miscanthus	1.5m x 1m	150mm	5
PEL cri	Pelargonium crispum	Lemon Scented Geranium	0.9m x 0.6m	150mm	5
PEN alo	Pennisetum alopecuroides	Fountain Grass	1.5m x 1m	150mm	5
PHL fru	Phlomis fruticosa	Jerusalem Sage	1m x 1m	150mm	5
ROS off	Rosmarinus officinalis	Rosemary	2.4m x 1.2m	150mm	5
SAL arg	Salvia argentea	Silver Sage	0.9m x 0.6m	150mm	5
STA byz	Stachys byzantina	Lamb's Ear's	0.3m x 1m	150mm	5

4 APPENDIX

1. LANDSCAPE DOCUMENTATION SET