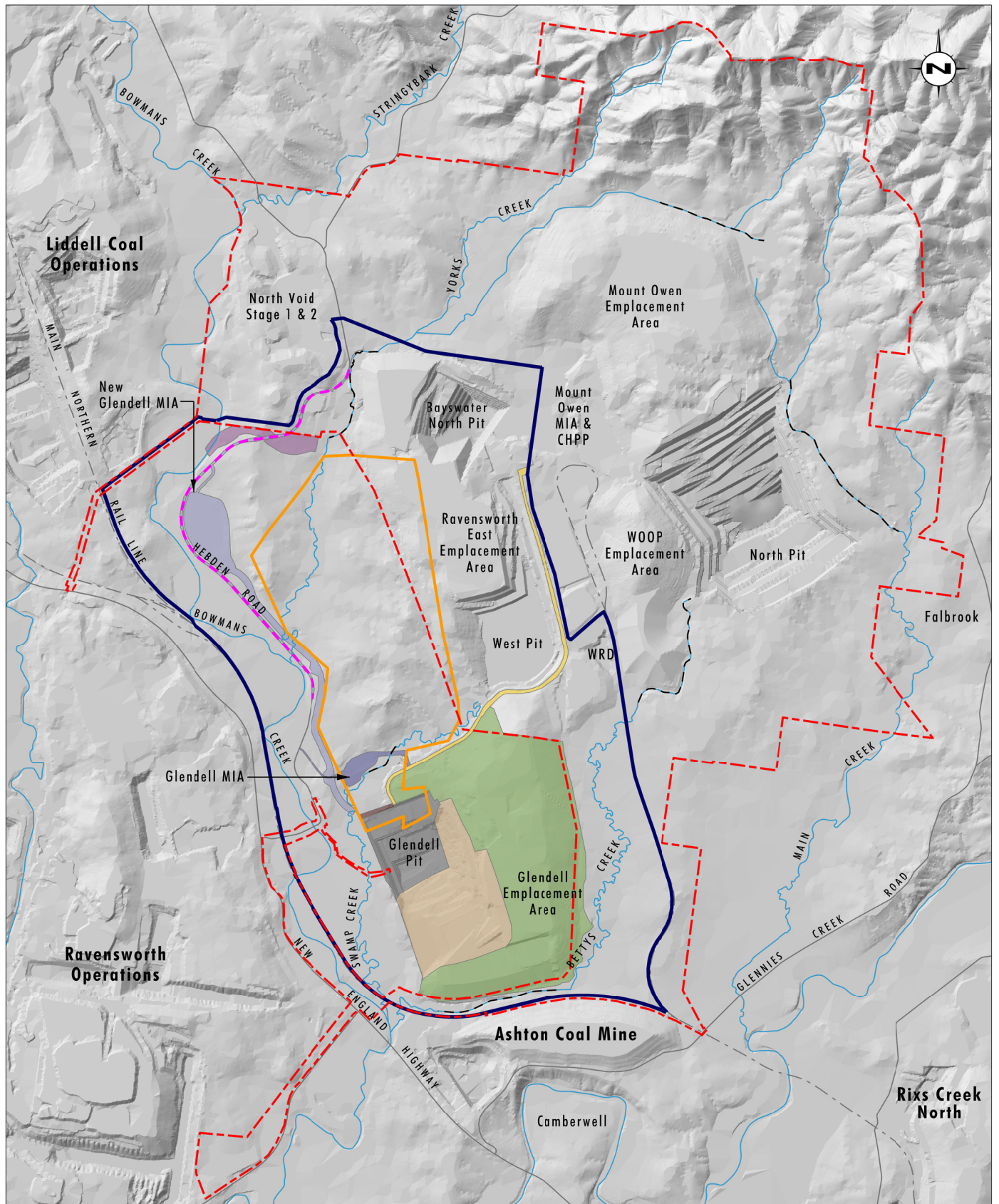




## **APPENDIX 6**

### Stage Plans



Data Source: Glencore (2019)

Note: Mount Owen Consent Boundary assumes Narama Pipeline Modification is approved

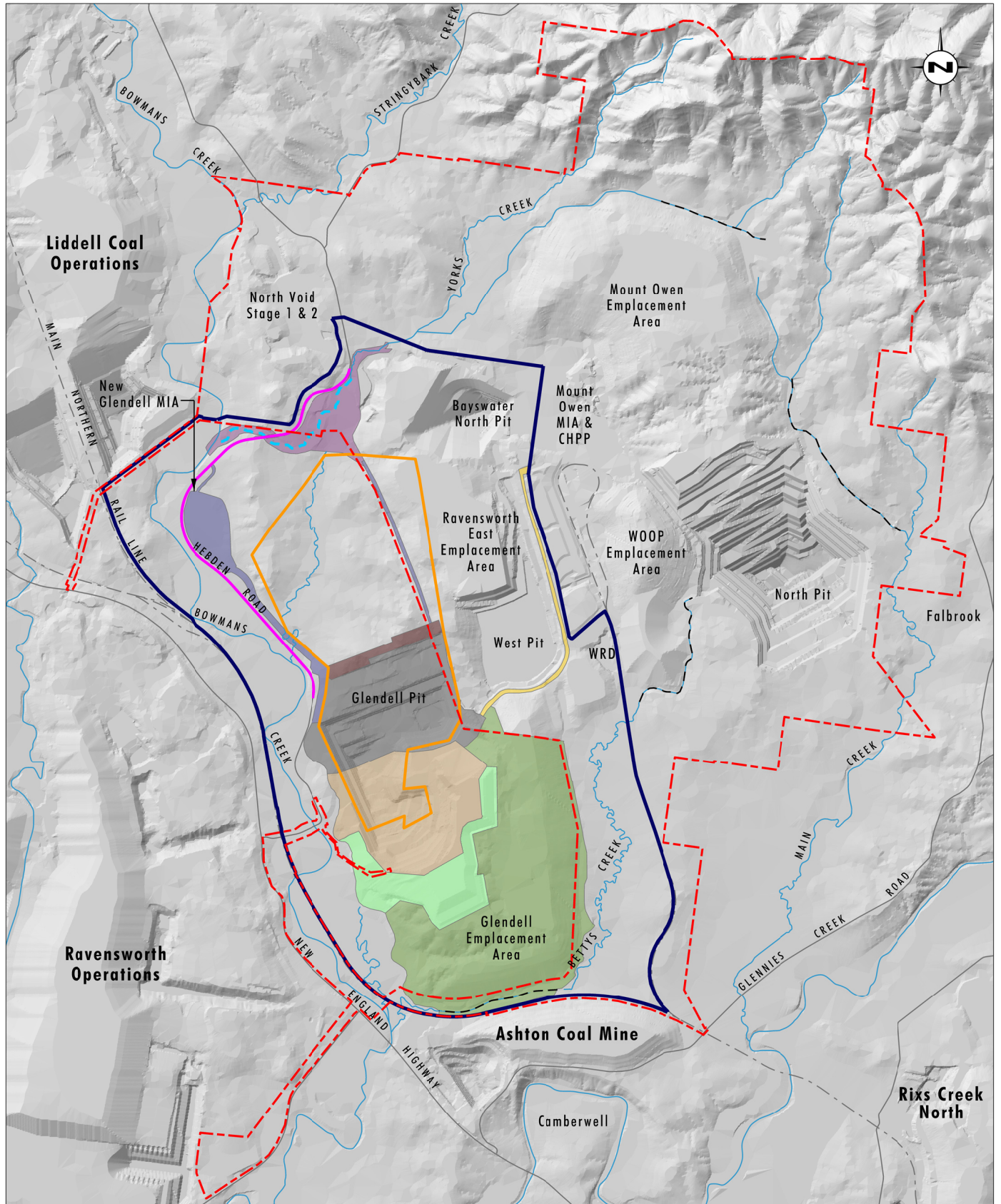
0 1.0 2.0 3.0 km

### Legend

- Project Area
- Glendell Pit Extension
- - - Mount Owen Consent Boundary
- - - Existing Creek Diversion
- Hebden Road Realignment (Construction)
- Active Pit/Working Area
- Active Overburden Emplacement Area
- Topsoil Removal Strip
- Rehabilitation
- Creek Realignment (Construction)
- Infrastructure/Internal Access
- Infrastructure (Construction)
- Haul Road

FIGURE 1

Glendell Continued Operations  
Conceptual Mine Plan  
- Year 1 (2021)



Data Source: Glencore (2019)  
 Note: Mount Owen Consent Boundary assumes Narama Pipeline Modification is approved

0 1.0 2.0 3.0 km

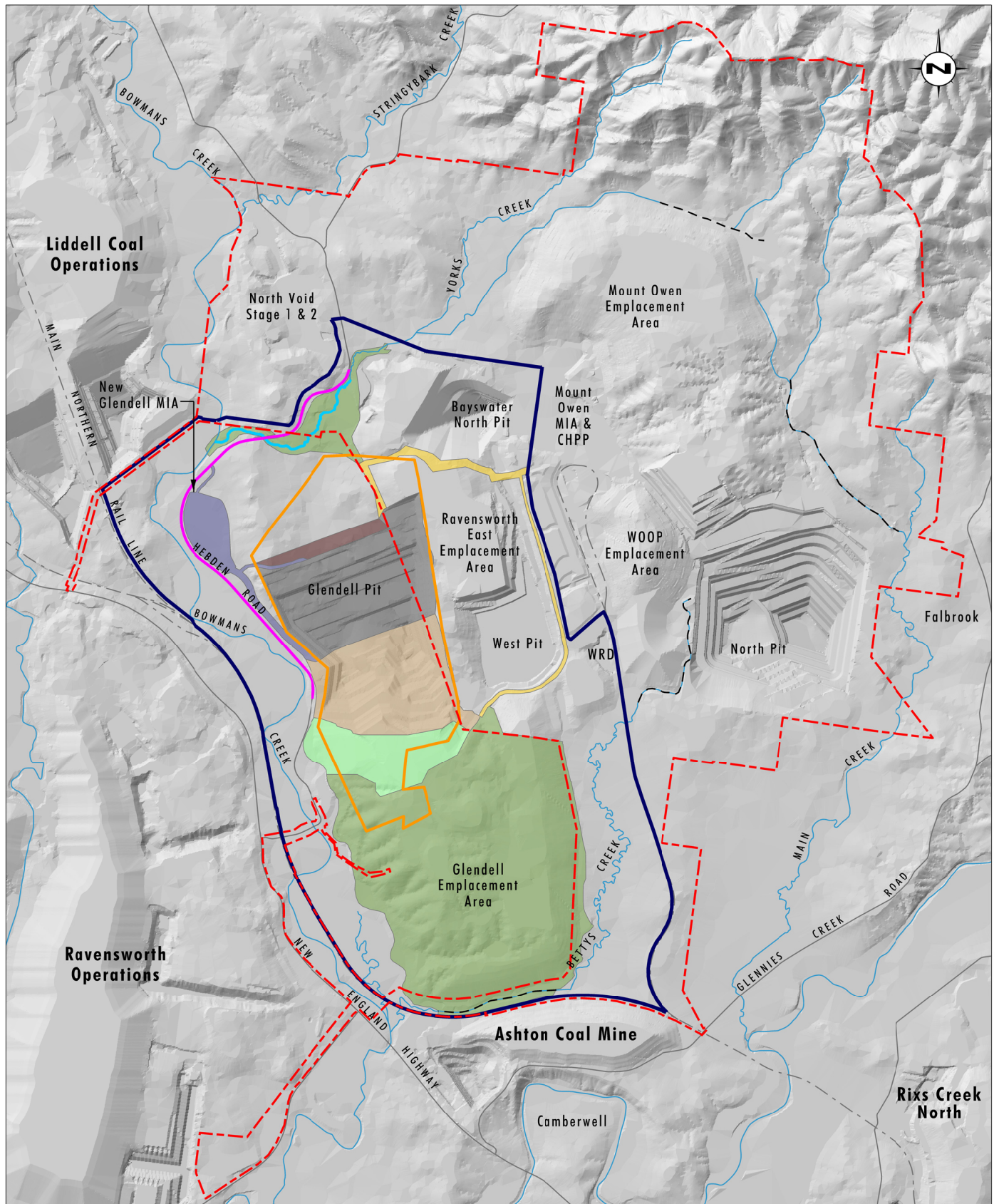
#### Legend

- |  |  |
|--|--|
| <span style="color: blue;">▬</span> Project Area   | <span style="background-color: brown; border: 1px solid black;"> </span> Topsoil Removal Strip             |
| <span style="border: 2px solid orange;"> </span> Glendell Pit Extension                                      | <span style="background-color: lightgreen; border: 1px solid black;"> </span> Shaping for Final Landform   |
| <span style="border: 2px dashed red;"> </span> Mount Owen Consent Boundary                                   | <span style="background-color: green; border: 1px solid black;"> </span> Rehabilitation                    |
| <span style="color: blue;">- - -</span> Existing Creek Diversion   | <span style="background-color: purple; border: 1px solid black;"> </span> Creek Realignment (Construction) |
| <span style="color: blue;">- - -</span> Yorks Creek Realignment (Establishment)                              | <span style="background-color: grey; border: 1px solid black;"> </span> Infrastructure/Internal Access     |
| <span style="color: magenta;">▬</span> Hebden Road Realignment   | <span style="background-color: yellow; border: 1px solid black;"> </span> Haul Road                        |
| <span style="background-color: grey; border: 1px solid black;"> </span> Active Pit/Working Area              |  |
| <span style="background-color: orange; border: 1px solid black;"> </span> Active Overburden Emplacement Area |  |

File Name (A4): R08/4166\_525.dgn  
 20191202 11.51

FIGURE 2

Glendell Continued Operations  
 Conceptual Mine Plan  
 - Year 6 (2026)



Data Source: Glencore (2019)  
 Note: Mount Owen Consent Boundary assumes Narama Pipeline Modification is approved

0 1.0 2.0 3.0 km

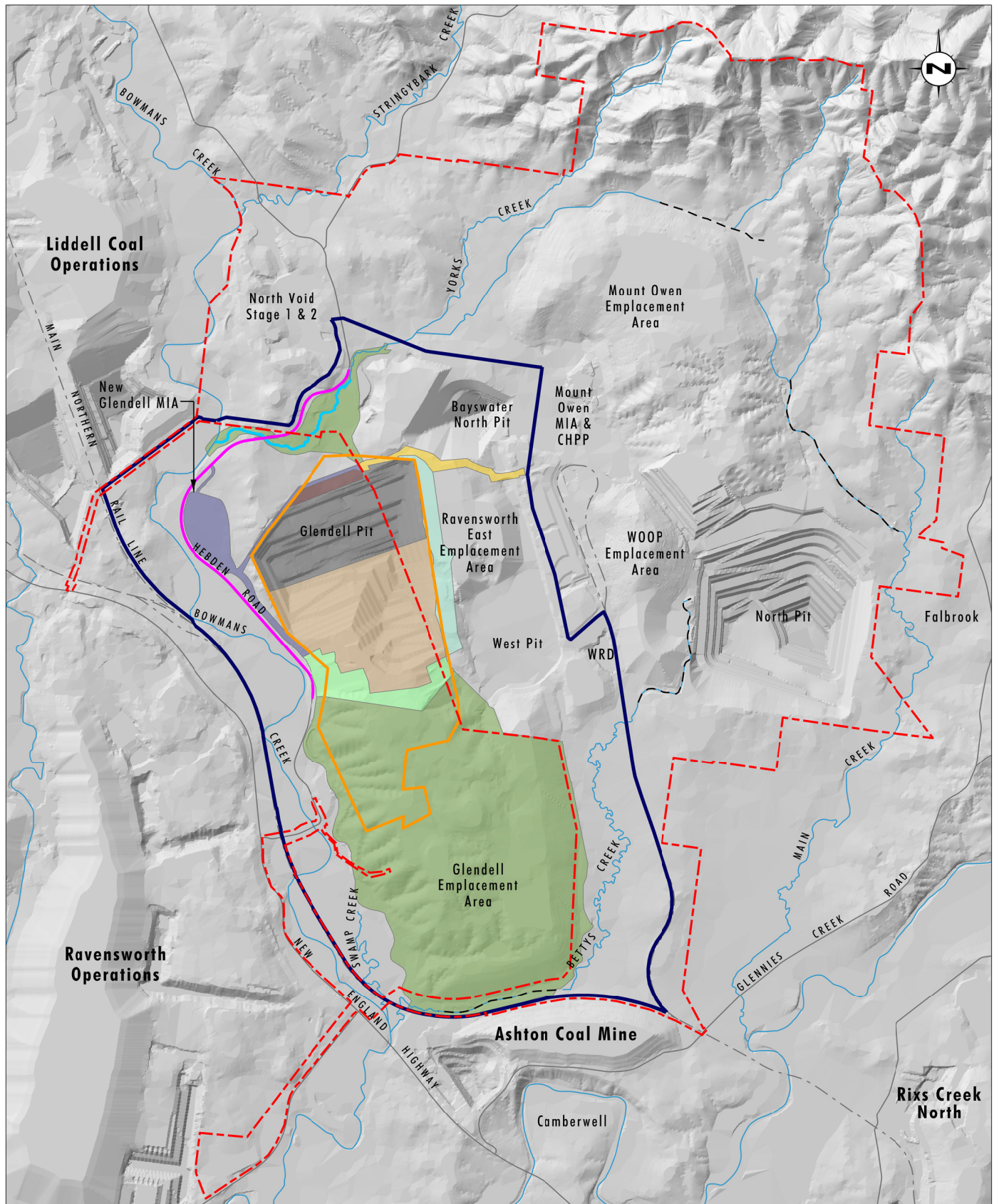
#### Legend

- |  |   |
|--|---|
| <span style="color: blue;">—</span> Project Area   | <span style="background-color: brown; border: 1px solid black; display: inline-block; width: 20px; height: 10px;"></span> Topsoil Removal Strip           |
| <span style="border: 2px solid orange; display: inline-block; width: 20px; height: 10px;"></span> Glendell Pit Extension                                   | <span style="background-color: lightgreen; border: 1px solid black; display: inline-block; width: 20px; height: 10px;"></span> Shaping for Final Landform |
| <span style="border: 2px dashed red; display: inline-block; width: 20px; height: 10px;"></span> Mount Owen Consent Boundary                                | <span style="background-color: green; border: 1px solid black; display: inline-block; width: 20px; height: 10px;"></span> Rehabilitation                  |
| <span style="color: black;">---</span> Existing Creek Diversion  | <span style="background-color: purple; border: 1px solid black; display: inline-block; width: 20px; height: 10px;"></span> Infrastructure/Internal Access |
| <span style="color: blue;">—</span> Yorks Creek Realignment (Commissioned)   | <span style="background-color: yellow; border: 1px solid black; display: inline-block; width: 20px; height: 10px;"></span> Haul Road                      |
| <span style="color: magenta;">—</span> Hebdens Road Realignment  |   |
| <span style="background-color: grey; border: 1px solid black; display: inline-block; width: 20px; height: 10px;"></span> Active Pit/Working Area           |   |
| <span style="background-color: tan; border: 1px solid black; display: inline-block; width: 20px; height: 10px;"></span> Active Overburden Emplacement Area |   |

File Name (A4): R08/4166\_526.dgn  
 20191202 11.52

FIGURE 3

Glendell Continued Operations  
 Conceptual Mine Plan  
 - Year 13 (2033)



Data Source: Glencore (2019)  
Note: Mount Owen Consent Boundary assumes Narama Pipeline Modification is approved

0 1.0 2.0 3.0 km

### Legend

- Project Area
- Glendell Pit Extension
- - - Mount Owen Consent Boundary
- - - Existing Creek Diversion
- Yorks Creek Realignment (Commissioned)
- Hebdens Road Realignment
- Active Pit/Working Area
- Active Overburden Emplacement Area
- Topsoil Removal Strip
- Shaping for Final Landform
- Temporary Rehabilitation
- Rehabilitation
- Infrastructure/Internal Access
- Haul Road

File Name (A4): R08/4166\_527.dgn  
20191202 11.53

FIGURE 4

Glendell Continued Operations  
Conceptual Mine Plan  
- Year 18 (2038)

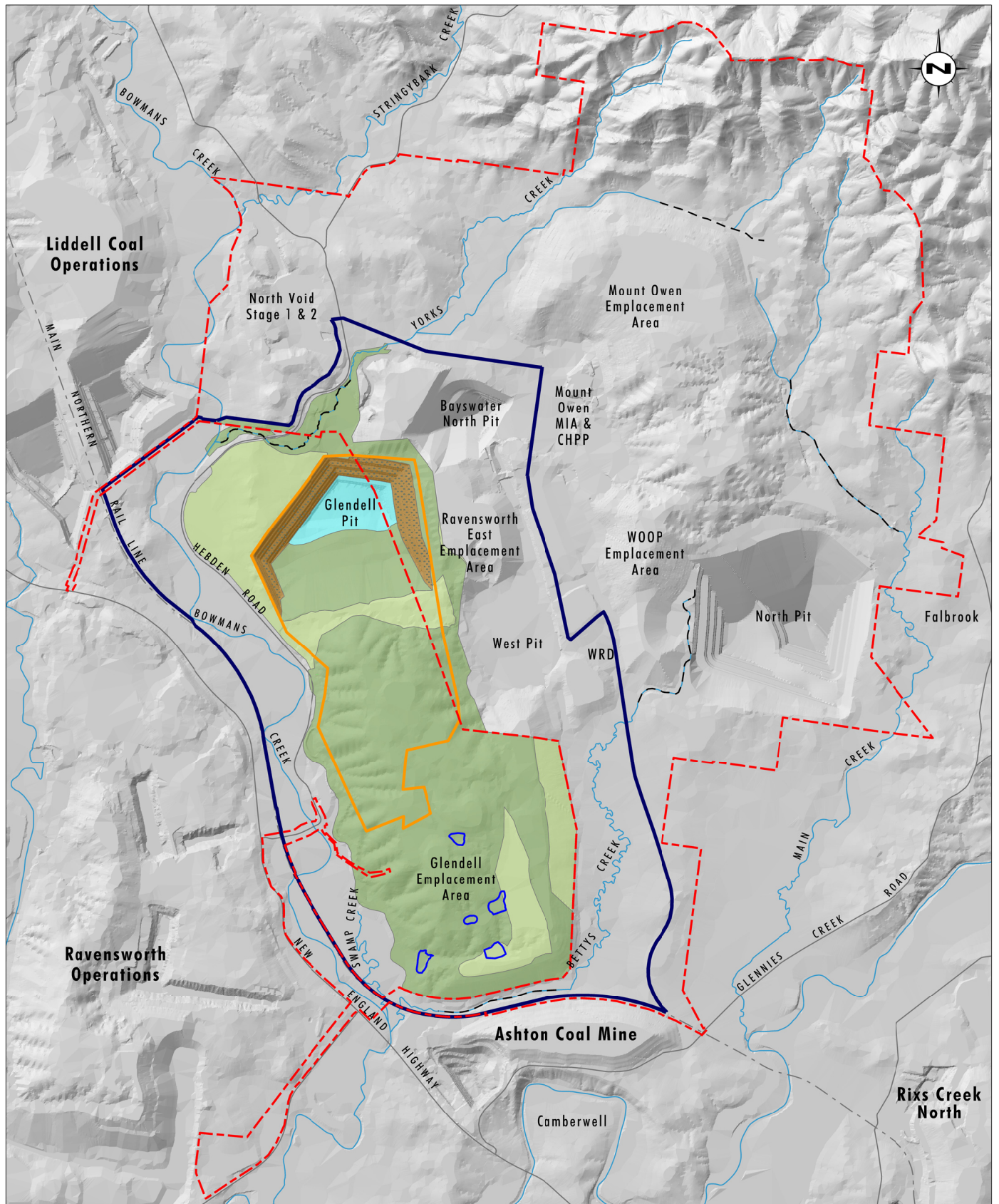


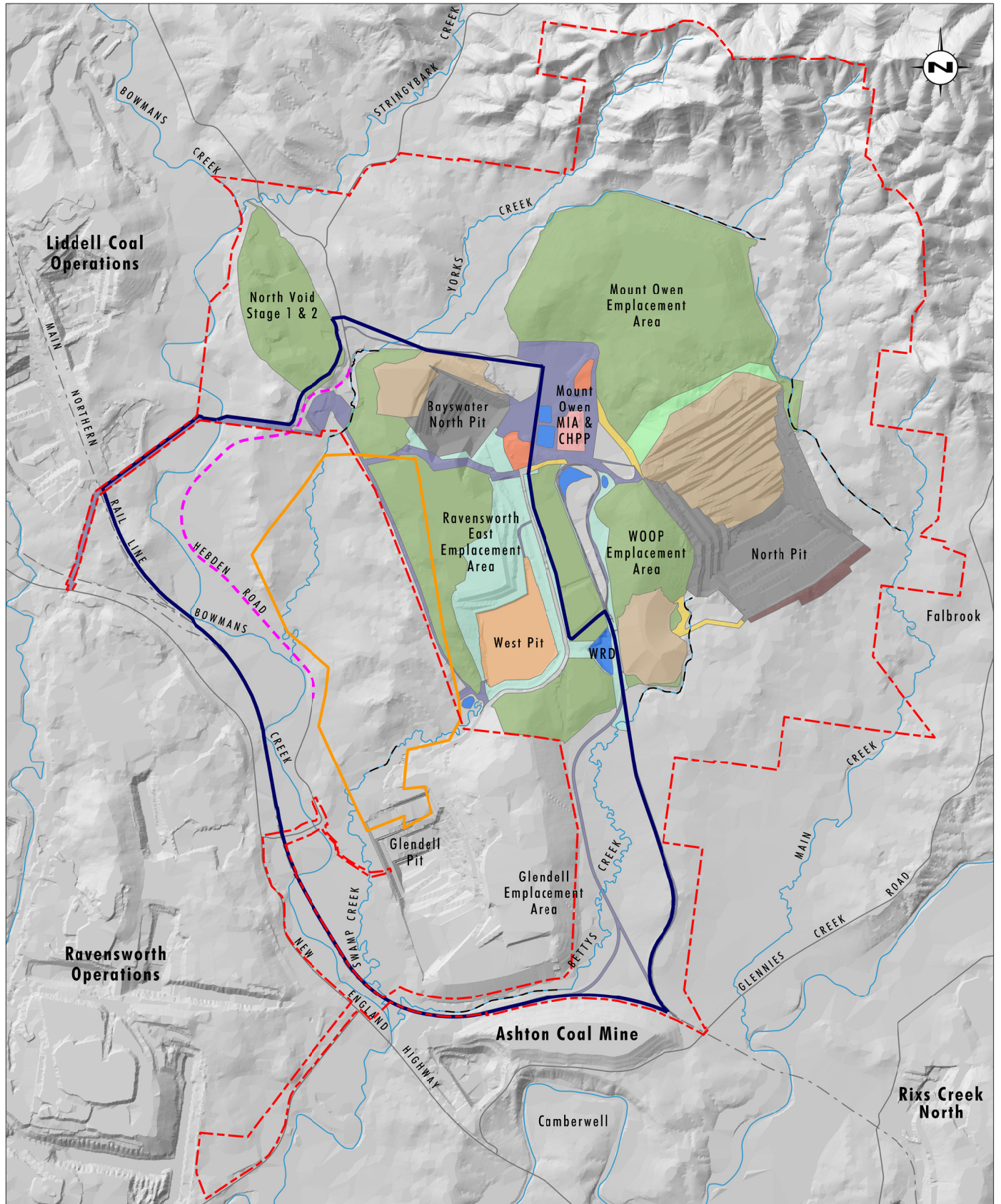
Image Source: Glencore (Dec 2018), Data Source: Glencore (2019)  
 Note: Mount Owen Consent Boundary assumes Narama Pipeline Modification is approved

#### Legend

- ▬ Project Area
- ▬ Glendell Pit Extension
- - - Mount Owen Consent Boundary
- - - Creek Diversion/Realignment
- Native Vegetation
- Open Grassland (Potential grazing areas with pockets of native vegetation)
- Vegetated Benches on Retained Highwall
- Retained Highwall
- Pit Lake
- Dryland Attenuation Basin

FIGURE 5

Glendell Continued Operations  
 Conceptual Mine Plan  
 - Final Landform



Data Source: Glencore (2019)  
Note: Mount Owen Consent Boundary assumes Narama Pipeline Modification is approved

0 1.0 2.0 3.0 km

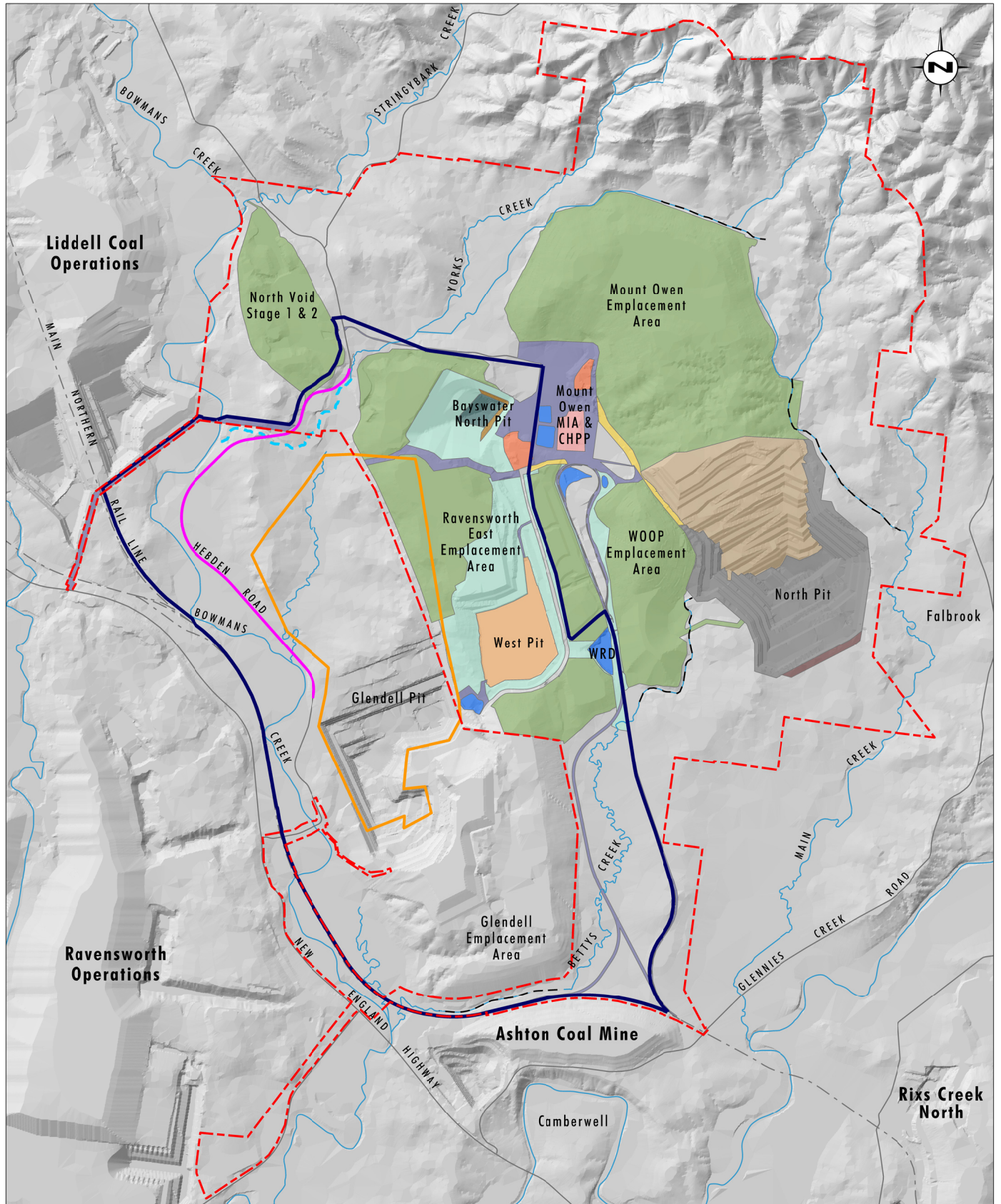
### Legend

- |   |  |   |
|---|--|---|
| <span style="color: blue;">—</span> Project Area                                  | <span style="color: lightgreen;">—</span> Shaping for Final Landform | <span style="color: blue;">—</span> Water Storage |
| <span style="color: orange;">—</span> Glendell Pit Extension                      | <span style="color: lightblue;">—</span> Temporary Rehabilitation    |   |
| <span style="color: red;">- - -</span> Mount Owen Consent Boundary                | <span style="color: green;">—</span> Rehabilitation                  |   |
| <span style="color: black;">- - -</span> Existing Creek Diversion                 | <span style="color: purple;">—</span> Infrastructure/Internal Access |   |
| <span style="color: magenta;">- - -</span> Hebden Road Realignment (Construction) | <span style="color: yellow;">—</span> Haul Road                      |   |
| <span style="color: grey;">—</span> Active Pit/Working Area                       | <span style="color: orange;">—</span> Coal Stockpile ROM             |   |
| <span style="color: brown;">—</span> Active Overburden Emplacement Area           | <span style="color: pink;">—</span> Coal Stockpile Product           |   |
| <span style="color: darkbrown;">—</span> Topsoil Removal Strip                    | <span style="color: tan;">—</span> Tailings Emplacement Area         |   |

File Name (A4): R08/4166\_523.dgn  
20191202 11.42

FIGURE 6

Proposed Mount Owen  
Conceptual Mine Plan  
- Year 1 (circa 2021)



Data Source: Glencore (2019)  
 Note: Mount Owen Consent Boundary assumes Narama Pipeline Modification is approved

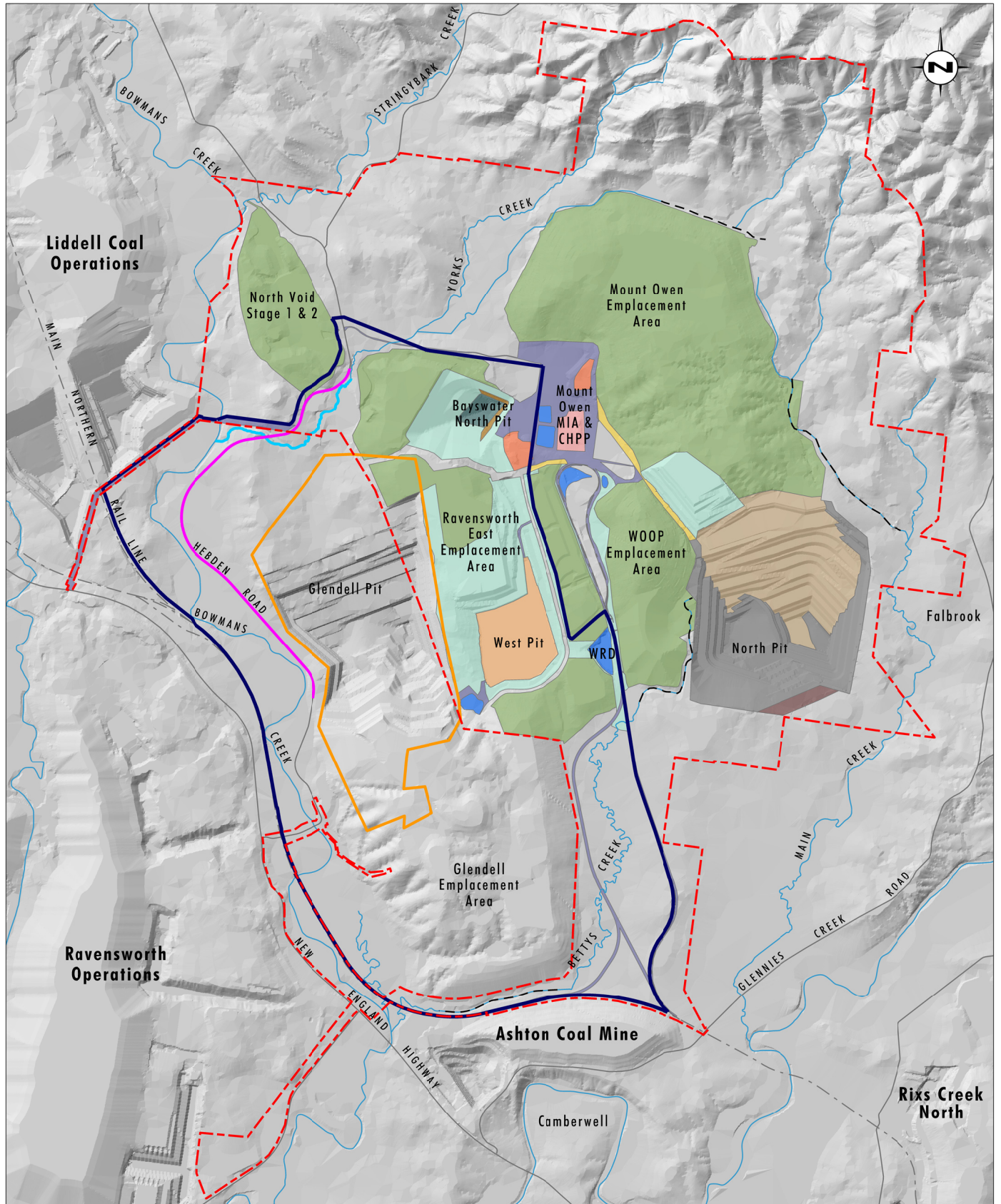
#### Legend

- |  |  |   |
|--|--|---|
| <span style="color: blue;">—</span> Project Area   | <span style="background-color: #808080; border: 1px solid black; display: inline-block; width: 20px; height: 10px;"></span> Topsoil Removal Strip          | <span style="background-color: #FFDAB9; border: 1px solid black; display: inline-block; width: 20px; height: 10px;"></span> Tailings Emplacement Area               |
| <span style="color: orange;">—</span> Glendell Pit Extension   | <span style="background-color: #90EE90; border: 1px solid black; display: inline-block; width: 20px; height: 10px;"></span> Shaping for Final Landform     | <span style="background-color: #ADD8E6; border: 1px solid black; display: inline-block; width: 20px; height: 10px;"></span> Water Storage                           |
| <span style="color: red;">- - -</span> Mount Owen Consent Boundary   | <span style="background-color: #90EE90; border: 1px solid black; display: inline-block; width: 20px; height: 10px;"></span> Temporary Rehabilitation       | <span style="background-color: #4682B4; border: 1px solid black; display: inline-block; width: 20px; height: 10px;"></span> Water Storage/Tailings Emplacement Area |
| <span style="color: black;">- - -</span> Existing Creek Diversion  | <span style="background-color: #90EE90; border: 1px solid black; display: inline-block; width: 20px; height: 10px;"></span> Rehabilitation                 | <span style="background-color: #D2B48C; border: 1px solid black; display: inline-block; width: 20px; height: 10px;"></span> Highwall                                |
| <span style="color: blue;">- - -</span> Yorks Creek Realignment (Establishment)  | <span style="background-color: #808080; border: 1px solid black; display: inline-block; width: 20px; height: 10px;"></span> Infrastructure/Internal Access |   |
| <span style="color: magenta;">—</span> Hebdon Road Realignment   | <span style="background-color: #FFD700; border: 1px solid black; display: inline-block; width: 20px; height: 10px;"></span> Haul Road                      |   |
| <span style="background-color: #808080; border: 1px solid black; display: inline-block; width: 20px; height: 10px;"></span> Active Pit/Working Area            | <span style="background-color: #FFA07A; border: 1px solid black; display: inline-block; width: 20px; height: 10px;"></span> Coal Stockpile ROM             |   |
| <span style="background-color: #D2B48C; border: 1px solid black; display: inline-block; width: 20px; height: 10px;"></span> Active Overburden Emplacement Area | <span style="background-color: #FFB6C1; border: 1px solid black; display: inline-block; width: 20px; height: 10px;"></span> Coal Stockpile Product         |   |

File Name (A4): R08/4166\_281.dgn  
 20191203 9:28

FIGURE 7

Proposed Mount Owen  
 Conceptual Mine Plan  
 - Year 6 (circa 2026)



Data Source: Glencore (2019)

Note: Mount Owen Consent Boundary assumes Narama Pipeline Modification is approved

0 1.0 2.0 3.0 km

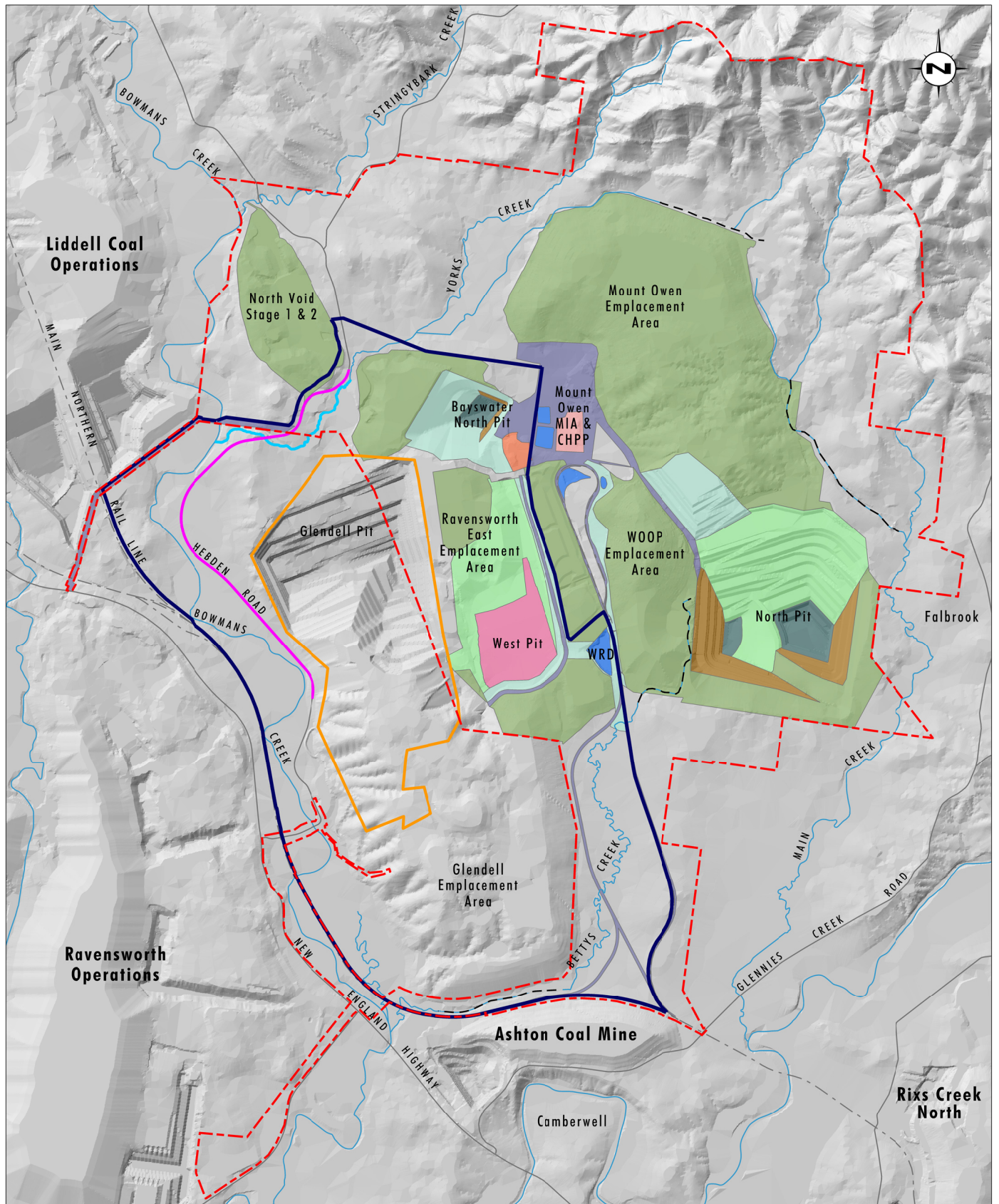
### Legend

- |  |  |   |
|--|--|---|
| <span style="color: blue;">—</span> Project Area   | <span style="background-color: #808080; border: 1px solid black; display: inline-block; width: 20px; height: 10px;"></span> Topsoil Removal Strip          | <span style="background-color: #FFDAB9; border: 1px solid black; display: inline-block; width: 20px; height: 10px;"></span> Tailings Emplacement Area               |
| <span style="color: orange;">—</span> Glendell Pit Extension   | <span style="background-color: #90EE90; border: 1px solid black; display: inline-block; width: 20px; height: 10px;"></span> Shaping for Final Landform     | <span style="background-color: #ADD8E6; border: 1px solid black; display: inline-block; width: 20px; height: 10px;"></span> Water Storage                           |
| <span style="color: red;">- - -</span> Mount Owen Consent Boundary   | <span style="background-color: #90EE90; border: 1px solid black; display: inline-block; width: 20px; height: 10px;"></span> Temporary Rehabilitation       | <span style="background-color: #4682B4; border: 1px solid black; display: inline-block; width: 20px; height: 10px;"></span> Water Storage/Tailings Emplacement Area |
| <span style="color: black;">- - -</span> Existing Creek Diversion  | <span style="background-color: #90EE90; border: 1px solid black; display: inline-block; width: 20px; height: 10px;"></span> Rehabilitation                 | <span style="background-color: #D2B48C; border: 1px solid black; display: inline-block; width: 20px; height: 10px;"></span> Highwall                                |
| <span style="color: blue;">—</span> Yorks Creek Realignment (Commissioned)   | <span style="background-color: #808080; border: 1px solid black; display: inline-block; width: 20px; height: 10px;"></span> Infrastructure/Internal Access |   |
| <span style="color: magenta;">—</span> Hebden Road Realignment   | <span style="background-color: #FFDAB9; border: 1px solid black; display: inline-block; width: 20px; height: 10px;"></span> Haul Road                      |   |
| <span style="background-color: #808080; border: 1px solid black; display: inline-block; width: 20px; height: 10px;"></span> Active Pit/Working Area            | <span style="background-color: #FFA07A; border: 1px solid black; display: inline-block; width: 20px; height: 10px;"></span> Coal Stockpile ROM             |   |
| <span style="background-color: #D2B48C; border: 1px solid black; display: inline-block; width: 20px; height: 10px;"></span> Active Overburden Emplacement Area | <span style="background-color: #FFB6C1; border: 1px solid black; display: inline-block; width: 20px; height: 10px;"></span> Coal Stockpile Product         |   |

File Name (A4): R08/4166\_280.dgn  
20191203 9:27

FIGURE 8

Proposed Mount Owen  
Conceptual Mine Plan  
- Year 13 (circa 2033)



Data Source: Glencore (2019)

Note: Mount Owen Consent Boundary assumes Narama Pipeline Modification is approved

0 1.0 2.0 3.0 km

### Legend

- |  |   |  |
|--|---|--|
| <span style="color: blue;">—</span> Project Area                           | <span style="color: green;">—</span> Rehabilitation                         | <span style="color: pink;">—</span> Tailings Capping in Progress |
| <span style="color: orange;">—</span> Glendell Pit Extension               | <span style="color: purple;">—</span> Infrastructure/Internal Access        |  |
| <span style="color: red;">- - -</span> Mount Owen Consent Boundary         | <span style="color: yellow;">—</span> Haul Road                             |  |
| <span style="color: black;">- - -</span> Existing Creek Diversion          | <span style="color: brown;">—</span> Coal Stockpile ROM                     |  |
| <span style="color: cyan;">—</span> Yorks Creek Realignment (Commissioned) | <span style="color: orange;">—</span> Coal Stockpile Product                |  |
| <span style="color: magenta;">—</span> Hebden Road Realignment             | <span style="color: blue;">—</span> Water Storage                           |  |
| <span style="color: lightgreen;">—</span> Shaping for Final Landform       | <span style="color: teal;">—</span> Water Storage/Tailings Emplacement Area |  |
| <span style="color: lightblue;">—</span> Temporary Rehabilitation          | <span style="color: tan;">—</span> Highwall                                 |  |

File Name (A4): R08/4166\_282.dgn  
20191203 9.42

FIGURE 9

Proposed Mount Owen  
Conceptual Mine Plan  
- Year 18 (circa 2038)

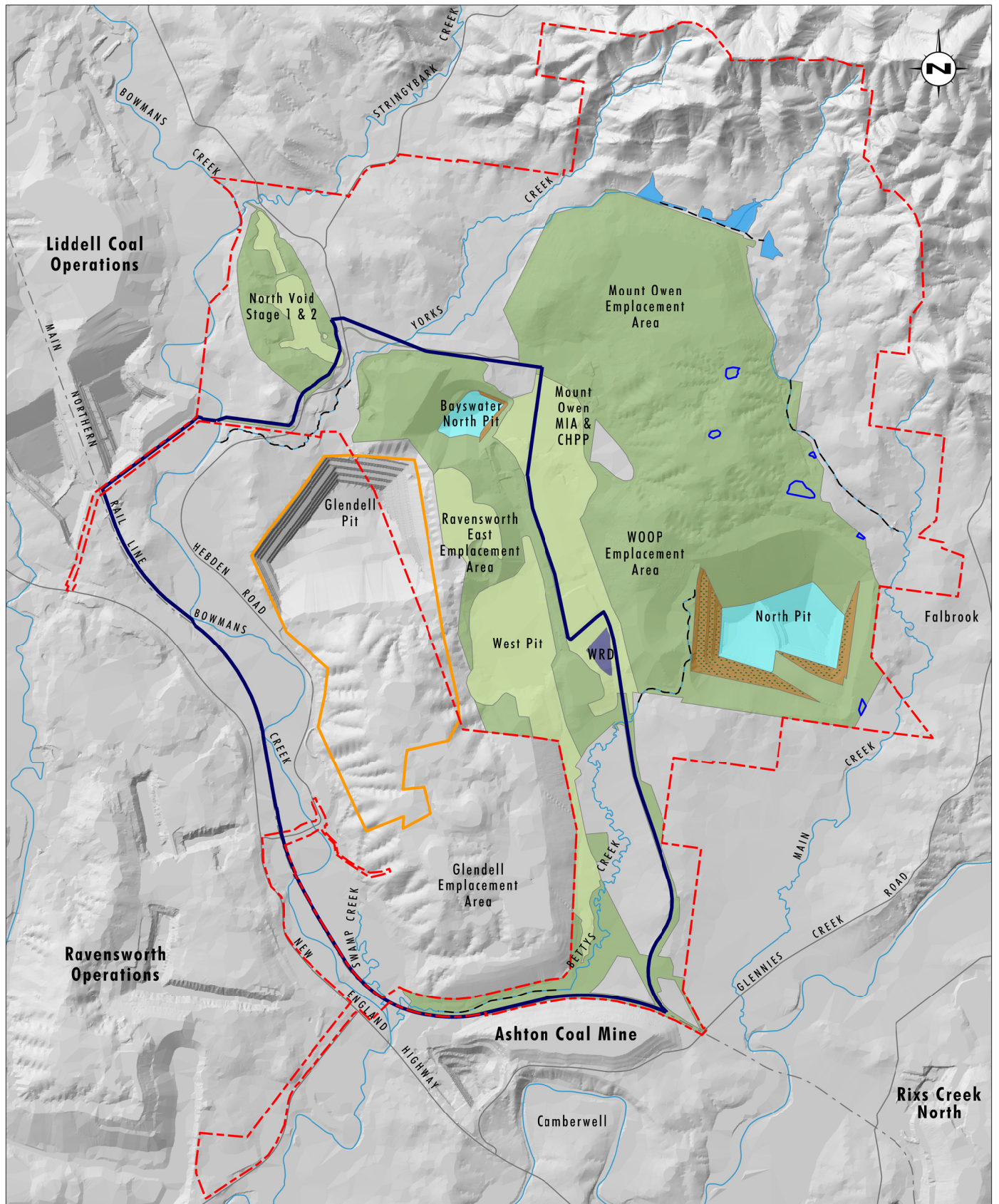


Image Source: Glencore (Dec 2018), Data Source: Glencore (2019)  
 Note: Mount Owen Consent Boundary assumes Narama Pipeline Modification is approved

#### Legend

- |  |   |
|--|---|
| <span style="color: blue;">—</span> Project Area   | <span style="background-color: #808080; border: 1px solid black; display: inline-block; width: 20px; height: 10px;"></span> Retention Basin           |
| <span style="color: orange;">—</span> Glendell Pit Extension   | <span style="background-color: #00FFFF; border: 1px solid black; display: inline-block; width: 20px; height: 10px;"></span> Pit Lake                  |
| <span style="color: red;">- - -</span> Mount Owen Consent Boundary   | <span style="background-color: #FFFF00; border: 1px solid black; display: inline-block; width: 20px; height: 10px;"></span> Dryland Attenuation Basin |
| <span style="color: black;">- - -</span> Creek Diversion/Realignment   |   |
| <span style="background-color: #90EE90; border: 1px solid black; display: inline-block; width: 20px; height: 10px;"></span> Native Vegetation  |   |
| <span style="background-color: #90EE90; border: 1px solid black; display: inline-block; width: 20px; height: 10px;"></span> Open Grassland (Potential grazing areas with pockets of native vegetation) |   |
| <span style="background-color: #8B4513; border: 1px solid black; display: inline-block; width: 20px; height: 10px;"></span> Vegetated Benches on Retained Highwall                                     |   |
| <span style="background-color: #D2691E; border: 1px solid black; display: inline-block; width: 20px; height: 10px;"></span> Retained Highwall  |   |

File Name (A4): R08/4166\_561.dgn  
 20191203 9:58

FIGURE 10

Proposed Mount Owen  
 Conceptual Mine Plan  
 - Final Landform (circa 2044)