

Meadowbank Education and Employment Precinct Schools Project Consultation Report

SSD 18_9343

**Prepared by Aurecon
for School Infrastructure NSW (SINSW)
October 2019**

Revision: 7
2019-10-11



Contents

1	Introduction.....	1
1.1	Executive summary	1
1.2	Proposed work.....	1
1.3	Site description	3
2	Engagement approach.....	4
2.1	Engagement approach and objectives	4
2.2	Project stakeholders	4
2.3	Response to SEARs.....	6
2.4	Ongoing engagement.....	7
3	Community and stakeholder engagement.....	8
3.1	Community engagement – key themes	8
3.2	Stakeholder engagement	10
3.3	Community and stakeholder engagement activities.....	15

Appendices

Appendix 1 – School information example.....	19
Appendix 2 – Community update newsletter examples	23
Appendix 3 – Drop in information session invitation examples.....	31
Appendix 4 – swipEngage digital survey tool	32
Appendix 5 – Project webpage	36
Appendix 6 – FAQs.....	39
Appendix 7 – AECG minutes	41

1 Introduction

This consultation report has been prepared by Aurecon on behalf of Department of Education (the Applicant). It accompanies an Environmental Impact Statement (EIS) in support of State Significant Development Application (SSD 18_9343) for the Meadowbank Education and Employment Precinct Schools Project (hereafter referred to as MEEPSP) at 2 Rhodes Street, Meadowbank (the site).

MEEPSP will cater for 1,000 primary school students and 1,620 high school students.

The purpose of this consultation report is to summarise the consultation undertaken by SINSW from March 2018 to May 2019 to support the redevelopment of the northern part of the TAFE NSW Meadowbank site, which has been acquired by the NSW Department of Education for establishment of a new primary school and high school. The consultation process has provided feedback from the community and stakeholders that has in turn informed planning and design.

1.1 Executive summary

The Project will see Meadowbank Public School and Marsden High School relocated to the newly acquired site next to TAFE NSW Meadowbank campus. Stakeholder consultation began in March 2018 and community engagement began in July 2018 and consultation will be ongoing throughout planning and construction. The consultation process involved meetings with school communities and other key stakeholders, as well as broader community consultation.

A range of communication tools, activities, and channels have and continue to be employed to inform and engage on this Project. These include, but are not limited to a project reference group, community drop-in information sessions, online surveys, presentations to key stakeholders, advertisements in local newspapers, project email address, project update newsletters, school websites and a project website, letterbox drops, and door-knocks.

Feedback from this consultation can be categorised into several key themes. They are listed below and addressed in more detail in section 3.2;

- traffic
- parking
- outdoor play and green space
- student safety
- school design
- public transport and access points
- capacity of the new schools to meet the future education needs of the community.

SINSW has updated the community about project progress and changes through regular community newsletters, drop in information sessions and staff engagement workshops. Changes to the design have been made in response to parent, staff and community feedback.

SINSW is committed to maintaining an open dialogue with key stakeholders and the community throughout the Project.

1.2 Proposed work

The Project will provide flexible contemporary learning and teaching facilities to accommodate the fast-growing student population in the area. The schools will have capacity for 1000 primary students and 1500 high school students as well as 120 Intensive English Centre students.

The proposal seeks consent for;

- An on-site car park for 60 parking spaces
- A multi-level, multi-purpose, integrated school building with a primary school wing and high school wing. The school building is connected by a centralised library that is embedded into the landscape. The school building contains;
 - Collaborative general and specialist learning hubs with a combination of enclosed and open spaces
 - Adaptable classroom home bases
 - Four level central library with the primary school library located on ground floor and the high school library on levels 1 to 3
 - Laboratories and workshops
 - Staff workplaces
 - Canteens
 - Indoor gymnasium
 - Multipurpose communal hall
 - Outdoor learning, play and recreational areas (both covered and uncovered).
- Associated site landscaping and public domain improvements
- An on-site car park for 60 parking spaces; and
- Construction of ancillary infrastructure and utilities as required.

1.3 Site description

The site is located in the City of Ryde and will occupy the land acquired by the NSW Department of Education next to the TAFE NSW Meadowbank campus.



Figure 1: The site

2 Engagement approach

2.1 Engagement approach and objectives

An engagement approach has been developed that provides opportunities for all stakeholders to receive information, engage with the Project and SINSW in addition to providing comment and feedback throughout the Project.

The objectives of engagement are to;

- Raise awareness and promote the benefits of the Meadowbank Education and Employment Precinct Schools
- Build and strengthen relationships with Marsden High School and Meadowbank Public School and maintain goodwill with the impacted school communities
- Manage community expectations and build trust by delivering on commitments
- Provide timely information to the impacted school communities, other stakeholders and the broader community
- Address and correct misinformation in the public domain
- Reduce the risk of project delays caused by negative third-party intervention
- Leave a positive legacy in each community.

The engagement approach is made up of two parallel processes;

- Meetings with school communities and other key stakeholders
- Broader community consultation

2.2 Project stakeholders

SINSW has successfully identified a wide range of stakeholders and community groups including but not limited to;

Stakeholder group	Stakeholders
School communities	<ul style="list-style-type: none">■ Teachers and other staff■ Parents■ P&C Associations■ Student Representative Councils and students generally■ Before and after school care■ School community users■ Private pre-school owner and pre-school parents■ School community users, including NSW Aboriginal Education Consultative Group (Ryde AECG)
TAFE	<ul style="list-style-type: none">■ Northern Sydney Institute (NSI) Deputy Director■ TAFE NSW Sydney Regional General Manager■ Development Director■ Change Manager
Peak Groups	<ul style="list-style-type: none">■ P&C Federation■ NSW Teachers Federation■ Primary Principal's Association■ Secondary Schools Principal Council■ Aboriginal Educational Consultative Group

Stakeholder group	Stakeholders
NSW Government	<ul style="list-style-type: none"> ■ Department of Planning ■ Office of Environment & Heritage ■ Office of Sport ■ Roads and Maritime Services ■ Transport for NSW ■ Government Architect NSW ■ Minister for Planning and Public Spaces ■ Member for Ryde
Local Government	<ul style="list-style-type: none"> ■ City of Ryde Mayor ■ City of Ryde General Manager
Utility providers	<ul style="list-style-type: none"> ■ Ausgrid ■ Sydney Water ■ Jemena ■ NBN Co.
Community groups	<ul style="list-style-type: none"> ■ Rotary Club of Ryde Inc ■ Lions Club City of Ryde Inc ■ Marsfield Community Centre ■ Shepherds Bay Community Centre, Meadowbank ■ Eastwood Library ■ North Ryde Library ■ Ryde Library Service ■ West Ryde Library ■ Local child care centres and other private education providers ■ Ryde District Mums group

Stakeholder group	Stakeholders
Broader community	<ul style="list-style-type: none"> Local residents including adjoining neighbours Meadowbank (around Meadowbank Public School and Meadowbank Education Precinct) West Ryde (around Marsden High School) Local businesses Wire Mesh Industries Pty Ltd Creative by Design Zen Imports Design Cosmetics Packing Co. Umart online West Ryde Mechanical Services Central Districts Smash Repairs Rolls and Go Jimmy Stuart West Ryde Trophies and Awards Douglas Partners Razco Pools Formula Chemicals Bluey's Ute World Rent A Space Self Storage, West Ryde Draftex Corporation Rozelle Bakery Kablan Moward and Sons McCarty and Norris Smash Repairs JSC Technologies Pty Brookers Brake Service Ryde Lee Motors Hyundai Motor Repairs JR Automotive Reece Plumbing Services Col's Body Shop Moby Fridge Hire Ryde Lee's Motors Kumou Tyres Basha Autohaus

2.3 Response to SEARs

This report is required by the Secretary's Environmental Assessment Requirements (SEARs) for SSD 18_9343.

Consultation	<p>During the preparation of the EIS, you must consult with the relevant local, State or Commonwealth Government authorities, service providers, community groups, special interest groups including local Aboriginal land councils and registered Aboriginal stakeholders, and affected landowners. In particular, you must consult with:</p> <ul style="list-style-type: none"> City of Ryde Council; Government Architect NSW (through the NSW State Design Review Panel process); Transport for NSW; <p>Consultation should commence as soon as practicable to agree the scope of investigation.</p> <p>The EIS must describe the consultation process and the issues raised, and identify where the design of the development has been amended in response to these issues. Where amendments have not been made to address an issue, a short explanation should be provided.</p>
--------------	--

Extract from NSW Department of Planning & Environment, Secretary's Environmental Assessment Requirements (SEARs)

This table identifies the SEARs and relevant reference within this report.

SEARs Item	Report Reference
Department of Planning and Environment (DPE)	3.2.1
Government Architect NSW State Design Review Panel (SDRP)	3.2.2
Office of Environment and Heritage (OEH)	3.2.3
State Emergency Services (SES)	3.2.4
Roads and Maritime Services (RMS) including Transport for NSW (TNSW)	3.2.5
City of Ryde Council	3.2.6
Indigenous stakeholders	3.2.7
Sydney Water	3.2.8
Ausgrid	3.2.9
Environment Protection Authority (EPA)	3.2.10
Heritage Council of NSW	3.2.11
Jemena	3.2.12
NBN Co.	3.2.13

2.4 Ongoing engagement

Following early consultation with the stakeholders and the community, SINSW is committed to an ongoing engagement program that will continue to provide the community with accurate and timely information as well as offer opportunities to provide input and feedback which will be considered throughout planning and development of the project.

3 Community and stakeholder engagement

The following communication and engagement tools, activities, and channels have been and/ or will be employed as part of engaging the two school communities, other key stakeholders and the broader community;

- SINSW Project website - including FAQs
- School and community information sessions
- School specific project information flyers and posters
- Workshops, information sessions and meetings with teachers and other school staff
- Community update newsletters
- Advertisements in local newspapers
- Project email address
- Door-knocking
- Work notifications
- Online swipEngage survey (Aurecon's bespoke digital research tool)
- Key stakeholder and identified community group meetings and presentations

3.1 Community engagement – key themes

Feedback from early consultation with school communities and the broader community can be categorised into several key themes. They are listed in the table below. They will be addressed through ongoing consultation and will continue to inform planning and design.

Key themes	Key themes in detail	Response
Traffic	Management of increased traffic volume in an already busy area.	We are working with traffic engineers to collect data and develop solutions to ensure we design the traffic to flow in and around the site. We have separated the high school and the primary school entrances and moved the bus drop off areas to help with traffic issues around drop off and pick up times.
Parking	There will be a large number of staff across the two schools who will need parking. Consider the impact on local streets and residents with increased need for parking. A 'kiss and ride' function is needed to drop off students.	All staff, parents, carers, students, and visitors are encouraged to find sustainable travel options to reach the site. We also recognise that driving will be an alternative mode of travel chosen by some parents and staff. We are working towards the integration of a sustainable travel plan that will include a variety of ways to get to the site. This includes 'kiss and drop'- we've had significant feedback from parents and teachers on kiss and drop functionality.

Key themes	Key themes in detail	Response
Outdoor play and green space	<p>There is no school oval in the design.</p> <p>There have been many requests to maintain the Meadowbank Public School friendship tree, Anzac garden and chicken coop.</p>	<p>A key objective of this Project is to balance green space and sporting facilities with education and community facilities. We're looking at a range of outdoor spaces for both schools – quiet spaces, open green spaces, structured sporting spaces and creative spaces, along with community facilities, such as a hall.</p> <p>Open outdoor space is an important feature of the Project. We are working with our design team to investigate how to maximise the open space without disrupting the local habitat.</p> <p>One of the key changes as a result of community feedback is that Meadowbank Primary School has more outdoor ground level playing space than the earlier design – and more outdoor space than it has at its current site.</p> <p>We understand that sporting facilities are important to both schools. We continue to look at a range of possible sporting facility options. We have designed a significant number of sporting facilities which are best suited to the site, including multipurpose courts and a seven a side football field. The high school gym is also designed to open out onto the TAFE green.</p> <p>The friendship tree, Anzac garden, and chicken coop are now included in the design.</p>
Student safety	<p>Concerns about how student safety will be managed at the co-located primary and secondary school. Including;</p> <ul style="list-style-type: none"> the drop off and pick up zones separation of primary and secondary school areas, and the proximity to the adult students at TAFE proximity to train station student evacuation in a fire 	<p>Student safety is one of our top priorities in designing these schools.</p> <p>Safety and traffic flow will be key in how the new drop off and pick up zones will be designed.</p> <p>The boundaries of each school and TAFE will be separated by fencing and screening hedges.</p> <p>As a result of community feedback, the primary school has been relocated away from the TAFE site, and the entry points for each school have been separated to further address safety concerns.</p> <p>The Project design incorporates a fire evacuation plan that allows safe and efficient evacuation from the building and has active fire safety systems in place.</p>
School design	<p>Generally positive feedback about the new facilities.</p> <p>Questions and concerns about shared vs independent facilities such as canteen, hall, library, uniform shop, and play space.</p> <p>Requests for storage spaces and sound proofing for specialist rooms such as music, drama and dance, TAS, and the library</p> <p>Accessibility considerations in a high rise building.</p>	<p>The primary and the high school will each have their own dedicated entry, administration, canteen, library and hall. The high school will also include the Wallamattagal Learning Centre and an intensive English learning centre.</p> <p>The change in the shape of the building allows greater flexibility in the indoor space and how it works with the outdoor space. Further feedback regarding the building interior will be considered in the next stage of design.</p> <p>Accessibility requirements are mandated and have been considered throughout design with input from accessibility experts.</p> <p>The overall height of the building has been reduced which enables better movement between levels with less reliance on stairs and lifts.</p>

Key themes	Key themes in detail	Response
Public transport and access points	Many students live in areas that are serviced by buses, not trains. Alternate public transport options should be considered.	<p>The Project is conveniently located near Meadowbank train station. The use of dedicated school buses will be considered in planning. All staff, parents, students and visitors are encouraged to find sustainable travel options to reach the site. We also recognise that driving will be an alternative mode of travel chosen by some parents and staff. This has been considered in the design. An existing pedestrian link through TAFE NSW Meadowbank campus connects Meadowbank train station with Rhodes Street. Enhancements to the connection can potentially be made by TAFE (as part of a separate approvals process).</p> <p>As a result of community feedback, the high school and the primary school have separate entrance points with more distance between them. The bus drop off areas have been moved to separate streets.</p>
Catering for population growth	<p>There is general support for the development in meeting the growing education demands in the community. However some community members are asking if this will be enough.</p> <p>There is a view that we keep the existing schools and build more.</p>	<p>MEEPSP is just one part of a major plan to cater for population growth in the Ryde area and across NSW. School projects in Ryde and its surrounds include the Macquarie Park Education Precinct and a new primary school at Smalls Road, as well as upgrades for West Ryde Public School, Denistone East Public School and Kent Road Public School.</p> <p>There has been an increase in residential development in the local area and this has been considered in plans for the Project.</p>
Future use of the existing school sites	There is much concern about the future use of the current school sites. There is a strong view the high school site should be quarantined for future educational use.	This is outside the scope of our Project.
Consultation	Enquiries about how individuals can stay informed and provide feedback before decisions are made.	There are many opportunities to provide input and feedback as the project progresses. These include information sessions and staff workshops to share ideas, suggestions and concerns. There will also be opportunities to have your say through formal processes as required by legislation.

3.2 Stakeholder engagement

	Requirement(s)	Issue	Response
3.2.1	Department of Planning and Environment (DPE)		
	Initial meeting to discuss SSDA requirements and planning pathway for demolition work.	<ul style="list-style-type: none"> Timing of the State Significant Development Application (SSDA) and start on site for demolition Design Excellence and use of the Pilot State Design Review Panel (SDRP) 	<p>Advised the project team of the methodology for preparation and lodgement of an SSDA, inclusive of the requirement for consultation with the Government Architects Office SDRP before the lodgement of the SSDA.</p> <p>Confirmed the demolition of existing buildings could be approved under a complying development planning pathway.</p> <p>This advice has been followed and the required consultation with the GANSW has been completed in preparation for SSDA application.</p>

	Requirement(s)	Issue	Response
3.2.2	Government Architect NSW State Design Review Panel (SDRP)		
	<p>Six design presentations to the SDRP by Woods Bagot:</p> <ul style="list-style-type: none"> ■ 2 May 2018; ■ 13 June 2018; ■ 8 August 2018; ■ 6 February 2019; ■ 27 March 2019; and ■ 3 May 2019. <p>Each presentation has been followed by issue of a letter by the GANSW detailing their comments received on:</p> <ul style="list-style-type: none"> ■ 9 May 2018; ■ 19 June 2018; ■ 15 August 2018; ■ 14 February 2019; ■ 2 April 2019; and ■ 7 May 2019. 	<ul style="list-style-type: none"> ■ Community use of facilities ■ Unsightly perimeter fencing ■ Public and children access to and through the site and to the public transport hubs ■ Solar amenity and better building orientation ■ Overall size, bulk and massing of the development ■ Landscaping for equitable and sustainable use 	<p>The comments advised by the SDRP have been addressed in the progressive presentation of development of the design to the SDRP, culminating in the endorsement of the building form, design aesthetic and building purpose by the panel. Specifically, the following concerns have been addressed and re-presented to the SDRP to their satisfaction:</p> <ul style="list-style-type: none"> ■ Allowance for sharing resources between the primary and secondary schools and the local community via location of the community hall near the entry on the Rhodes Street frontage; ■ Integration with the TAFE campus and the broader precinct masterplan; ■ Simple and clear building forms and organisation on the site, with simple vertical circulation; ■ The differentiation of primary and high school spaces as well as the requirements of specific learning environments within a regular grid layout; ■ The articulation of the central sloped landscape element to provide functional gathering spaces for large student groups and its interface with the sides of the building to provide natural light to internal spaces and create a clear relationship between inside and outside while addressing buildability, erosion control and maintenance concerns; ■ The impact of potential flood levels; ■ Opportunities to incorporate Aboriginal cultural heritage in building and landscape treatments; ■ A whole-of-site stormwater, OSD and irrigation strategy; ■ Opening of the pinch point at the eastern end of the buildings and clarification of circulation at the primary and high school entries; ■ Minimisation of perimeter fencing through the use of the building as the secure line where appropriate and options for camouflaging fences within the landscape; and ■ Clarification of the ESD proposal with regards to zoning, location of plant, peak and non-peak loads, acoustic treatments and natural ventilation.
3.2.3	Office of Environment and Heritage (OEH)		
	<p>OEH has declined requests for consultation prior to SSDA Submission.</p>	<p>Nil.</p>	<p>The SSDA will be formally referred to the OEH by DPE and it is expected that OEH comments will be received in response. These comments will be addressed by the project team at that time.</p>

	Requirement(s)	Issue	Response
3.2.4	State Emergency Services (SES)		
	Assess evacuation requirements	<ul style="list-style-type: none"> ■ Site flooding and placing the school within but above the Probable Maximum Flood (PMF) level. ■ Possible use of the school building as a place of public refuge. 	<p>The SES advised:</p> <ul style="list-style-type: none"> ■ in the event of a flood occurring the school would be categorised as a "Refuge in Place", and a plan will be developed by SES as to how to respond. ■ before a 1:100 year flood event occurring, public notification would be provided to parents to not send children to school, hence minimising the risk of people being trapped in the building. ■ the planned evacuation route leading to land in the north east corner of the site that is above the Probable Maximum Flood (PMF) level is acceptable in principle subject to their review of the SSDA documents. The SSDA documents need to address the following requirements: <ol style="list-style-type: none"> 1. SES would prefer the following strategy, with following preference order: <ol style="list-style-type: none"> a. Keep students at home; b. Shelter-in-place during the maximum 9 hour flood event; and c. Evacuation to nearby public shelters. 2. Shelter-in-place is required to provide Wi-Fi network with social media. 3. School Risk Assessment (to include parents input) on flooding for the proposed Rest-In-Place shelter is required. Take into consideration food, water, managing kids for 9 hours. 4. Project flood warning systems to include the following: <ol style="list-style-type: none"> a. Rain gauge on building roof; b. Water depth sensors in Charity Creek to be calibrated to 5, 20 & 100 year events; and c. Public Address warning systems. 5. School to train flood evacuation officer(s). 6. Electronic variable signage. <p>In principle agreement that non-habitable lower access sections of the building can be built below the PMF and above the 1 in 100 year event (for activities such as gymnasiums, plantrooms, foyers, stairs, car parking, loading facilities, end of trip facilities).</p>

	Requirement(s)	Issue	Response
3.2.5	Roads and Maritime Services (RMS) including Transport for NSW (TfNSW)		
	<p>Define SEARs requirements and the approach by the traffic engineers on reporting and modelling</p> <p>Transport for NSW (TfNSW)</p> <p>Define SEARs requirements and the approach by the traffic engineers on reporting and modelling.</p> <p>A combined meeting with RMS and TfNSW was held on 28 June 2018 to verify their respective requirements for the SEARS. This expanded the scope originally identified in the SEARS document. The original scope of the traffic consultant has expanded to include the additional requirements.</p> <p>A further meeting with RMS and TfNSW together with Council, DPE and TAFE was held on 20 March 2019 to present work done to date on traffic modelling, transport access and impacts on the school and the community, and to inform the SSDA application on these issues prior to lodgement.</p> <p>An additional meeting with RMS and TfNSW was held on 24 May 2019 to present the final School Travel Plan and Transport and Accessibility Impact Assessment.</p>	<ul style="list-style-type: none"> ■ Traffic impact on surrounding road network. ■ Detailed traffic analysis to inform the traffic study. ■ Response to traffic within the local road network. 	<p>The traffic and transport report has been prepared for inclusion in the SSDA application documents. The main items raised for inclusion in the SSDA application and now addressed in the traffic and transport study report are:</p> <ul style="list-style-type: none"> ■ The SIDRA Network analysis to include the Victoria Road intersections between Hermitage Road and Bowden Street; ■ Review the impact of buses along Victoria Road and Bowden Street; ■ Pedestrian route between Meadowbank Station and Rhodes Street via the TAFE site; ■ Provision of a combined workplace / green travel plan; ■ Modelling of potential road upgrades impacted by the school; and ■ Demand for car parking resulting from the school development. <p>This has led to the design team considering off street parking, additional bus drop off locations, road laybacks, crossings, intersection upgrades, and the through site link.</p>
3.2.6	City of Ryde Council (Council)		
	<p>An initial coordination meeting was held on 11 July 2018 to present the project for Council to advise their comments.</p> <p>Further meetings were held on 12 April 2019 (with Council's relevant senior technical managers, to present the project and the draft travel plan and obtain an update from Council on the infrastructure and planning context, including Council's priorities) and on 17 April 2019 (with Council's Executive Team, to provide an updated overall project presentation for Council to advise their comments).</p>	<ul style="list-style-type: none"> ■ Process undertaken under the SSDA, and the SDRP process undertaken. ■ Traffic impacts on surrounding road network. ■ Tree retention. ■ Flood impact (both to site and to surrounds). ■ Community use of facilities. 	<p>Council's key concerns that have been addressed in the development of the design are:</p> <ul style="list-style-type: none"> ■ Traffic management during construction and school operation – included in the traffic and transport study report and addressed in the design; ■ Retention of as many existing trees as possible – addressed in the design; ■ Flooding assessment and sitewide flood management strategy; ■ Out-of-hours access to the site for Council – a school operational issue to be agreed between DoE and Council; ■ Community access from Meadowbank Station to Rhodes Street – coordination meetings with TAFE have identified a potential future route through the TAFE site; ■ Community access to school facilities – placement of the community hall adjacent to the main entry and site access gates along the Rhodes street boundary for out-of-hours access to the hall and sports facilities.

	Requirement(s)	Issue	Response
3.2.7	Aboriginal stakeholders		
	<p>Relevant stakeholders for City of Ryde is 35</p> <p>Letters for Stage 2 consultation, further information about project, sent to registered Aboriginal Stakeholders.</p>	<p>ACHAR tasks requested under the SEARS requirements.</p>	<p>ACHAR is complete. Ten Aboriginal stakeholder groups have registered an interest and five of these have provided written responses to the draft ACHAR with all supporting the proposed methodology and one group wishing to be involved with excavation works. No identified stakeholders have yet requested a site visit.</p> <p>A meeting was held with representatives of the Ryde Aboriginal Education Consultative Group (AECG) on 2 May 2019 to discuss opportunities for Aboriginal involvement in the project's design.</p>
3.2.8	Sydney Water		
	<p>Received Notice of Anticipated Requirements for Section 73 Subdivider / Developer Compliance Certificate (Sydney Water Act 1994, Part 6, Division 9), Pending Development Consent.</p>	<p>Connection and authority's approvals process.</p>	<p>No further action required prior to the SSDA application submission.</p> <p>The NoAR has now been allowed to expire and the Contractor will be required to apply for a new NoAR.</p>
3.2.9	Ausgrid		
	<p>Application for connection was undertaken in the early phase of the project. Ausgrid issued a revised design offer, and acceptance form on 28 July 2018. This is to be reviewed and accepted by SINSW.</p> <p>A meeting with Ausgrid as neighbouring landowner was held on 28 August 2019 to present the project and provide an opportunity for feedback.</p>	<p>Connection and authority's approvals process.</p>	<p>No further action required regarding the design offer prior to the SSDA application submission.</p> <p>Ausgrid's key concerns are management of the transition of high school students between the bus stop on McPherson Street and the school, and potential conflict between parking for student drop-off and Ausgrid operations, particularly the requirement to maintain access to the Ausgrid driveway in the transition curve between Mellor Street and Rhodes Street.</p>
3.2.10	Environment Protection Authority (EPA)		
	<p>Confirmed via Acoustic Logic and SINSW that no consultation will be required prior to SSDA Submission.</p>	<p>Noise and Dust items requested under the SEARS requirements.</p>	<p>The SSDA will be referred to the EPA by the DPE. Comments received in response will be reviewed by the project team and responded to at that time.</p>
3.2.11	Heritage Council of NSW		
	<p>(part of the OEH)</p>	<p>Nil.</p>	<p>OEH (which includes Heritage Council of NSW) has declined requests for consultation prior to SSDA Submission</p>
3.2.12	Jemena		
	<p>No consultation made with Jemena at this point of the project.</p>	<p>Connection and authority's approvals process.</p>	<p>An application will be made via the Jemena portal prior to tender.</p>
3.2.13	NBN Co		
	<p>No consultation made with NBN at this point of the project.</p>	<p>Connection and authority's approvals process.</p>	<p>An application and liaison to be undertaken during the construction stage.</p>

3.3 Community and stakeholder engagement activities

Stakeholder consultation began in March 2018 and community engagement began in July 2018.

Date	Authority/Group	Tool/Activity
15 March 2018	Department of Planning and Environment	<ul style="list-style-type: none"> Initial consultation to discuss SSDA requirements and pathways for demolition work
18 April 2018	Government Architect NSW (part of Department of Planning and Environment)	<ul style="list-style-type: none"> Initial/preliminary presentation to discuss framework of State Design Review Panel process
2 May 2018	Government Architect NSW (part of Department of Planning and Environment)	<ul style="list-style-type: none"> GANSW State Design Review Panel Session No. 1, initial concept presentation
4 May 2018 ongoing	PRG meetings. PRG members: <ul style="list-style-type: none"> Director, Public Schools NSW (Chair) Project Manager Asset Management Unit Representatives School Principals Parent Representatives x 2 (from 3 August) Head Design Consultant Program Manager Community Engagement (from 22 June) 	<ul style="list-style-type: none"> Regular meetings in 3 – 4 week intervals
31 May 2018	Office of Environmental and Heritage	<ul style="list-style-type: none"> Requested a meeting with OEHL to discuss approach to ACHAR. OEHL has declined requests for consultation prior to SSDA Submission, email confirmed this dated 1 June 2018
13 June 2018	Government Architect NSW (part of Department of Planning and Environment)	<ul style="list-style-type: none"> GANSW State Design Review Panel Session No. 2, follow up on previous advice
25 June 2018	SES (State Emergency Services)	<ul style="list-style-type: none"> Assess evacuation requirements
28 June 2018	Roads and Maritime Services	<ul style="list-style-type: none"> Define SEARs requirements and the approach by the traffic engineers on reporting and modelling
28 June 2018	Transport for NSW	<ul style="list-style-type: none"> Define SEARs requirements and the approach by the traffic engineers on reporting and modelling
End Jun 2018	Contacting Government agencies to seek details of potential Aboriginal Stakeholders	<ul style="list-style-type: none"> 80+ potential stakeholders identified. Relevant stakeholders for City of Ryde is 35
3 July onwards	TAFE NSW Change management group	<ul style="list-style-type: none"> Fortnightly meetings
5 July 2018	Office of Environmental and Heritage	<ul style="list-style-type: none"> OEHL has declined requests for consultation prior to SSDA Submission, email confirmed this dated 5 July 2018
11 July 2018	City of Ryde Council	<ul style="list-style-type: none"> Initial coordination meeting
July 2018	Aboriginal Stakeholders	<ul style="list-style-type: none"> Letters for Stage 1 consultation, seeking registration of interest, sent to identified Aboriginal stakeholders
24 July 2018	Targeted early engagement with Meadowbank and Marsden school communities, neighbouring residents, and businesses	<ul style="list-style-type: none"> Initial information 'pack' for principals to share in hard copy or through regular information (incl. social media) channels with teachers, parents and students including: Newsletter Poster Invitation to drop in information sessions

Date	Authority/Group	Tool/Activity
26 July 2018	Sydney Water	<ul style="list-style-type: none"> Received Notice of Anticipated Requirements for Section 73 Subdivider/Developer Compliance Certificate (Sydney Water Act 1994, Part 6, Division 9), Pending Development Consent
28 July 2018	Ausgrid	<ul style="list-style-type: none"> Application for connection was undertaken in the early phase of the project. Ausgrid issued Revised design offer, and acceptance on 28 July 2018. This needs to be reviewed and accepted by the proponent.
July and August 2018	Aboriginal Stakeholders	<ul style="list-style-type: none"> Letters for Stage 2 consultation, further information about project, sent to registered Aboriginal Stakeholders
31 July 2018	Provide an opportunity for parents and students to ask questions and share their concerns	<ul style="list-style-type: none"> School drop in information session held at Meadowbank Public School 6pm – 8pm
31 July 2018	Marsden High School P&C	<ul style="list-style-type: none"> Project team representative addressed group and answered questions
31 July – 31 August 2018	Digital survey to identify community values and concerns	<ul style="list-style-type: none"> Digital research survey swipEngage– distributed via schools EDM, community update newsletter as well as on school and project websites
1 August 2018	Provide an opportunity for parents and students to ask questions and share their concerns	<ul style="list-style-type: none"> School drop in information session at Marsden High School 6pm – 8pm
6 – 9 August 2018	Inform the school communities, neighbours, and broader community of the project as well as its benefits Promote the project and generate community excitement in the transformation aspect for the area	<ul style="list-style-type: none"> Distribution of community update newsletter to 35,000 residents and business in near the existing schools and new school site
7 August 2018	Melrose Park Public School P&C	<ul style="list-style-type: none"> Project team representative addressed group and answered questions
8 August 2018	Government Architect NSW (part of Department of Planning and Environment)	<ul style="list-style-type: none"> GANSW State Design Review Panel Session No. 3, follow up on previous advice
13 August 2018	Meadowbank Public School P&C	<ul style="list-style-type: none"> Project team representative addressed group and answered questions
27 August 2018	Marsden High School staff Q&A	<ul style="list-style-type: none"> The project team addressed the group across six different sessions for teachers and other staff as well as answered questions and asked for feedback on building design and future focused learning
13 September	Meadowbank Public School staff Q&A	<ul style="list-style-type: none"> The project team addressed the teachers and other staff and answered questions and asked for feedback on building design and future focused learning
	Heritage Council of NSW	<ul style="list-style-type: none"> OEH (which includes Heritage Council of NSW) has declined requests for consultation prior to SSDA Submission
19 September 2018	FAQs	<ul style="list-style-type: none"> An update on project frequently asked questions on SINSW website.
November 2018	Demolition notification	<ul style="list-style-type: none"> Site establishment and start of work.
November 2018	A community update newsletter for Ryde LGA and key stakeholders	<ul style="list-style-type: none"> Key themes from community feedback from July – September and how it will be used.
November 2018	Demolition notification update	<ul style="list-style-type: none"> Confirmed demolition starting date.
23 November 2018	Meadowbank Public School staff engagement session	<ul style="list-style-type: none"> Shared how feedback has been considered in the updated design. Sought more feedback.
7 December 2018	Marsden High School staff engagement session	<ul style="list-style-type: none"> Shared how feedback has been considered in the updated design. Sought more feedback.

Date	Authority/Group	Tool/Activity
11 December 2018	Meadowbank Public School community information session	<ul style="list-style-type: none"> Shared how feedback has been considered in the updated design. Sought more feedback.
12 December 2018	A community update newsletter for Ryde LGA and key stakeholders	<ul style="list-style-type: none"> Details of how feedback has been incorporated in to design, what has been included and what is still being considered.
13 December 2018	Marsden High School community information session	<ul style="list-style-type: none"> Shared how feedback has been considered in the updated design. Sought more feedback.
February 2019	Demolition notification	<ul style="list-style-type: none"> Update that there will be decreased activity on site for a number of weeks. RMS traffic trial in the area, impact to demolition traffic will be monitored.
6 February 2019	Government Architect NSW (part of Department of Planning and Environment)	<ul style="list-style-type: none"> GANSW State Design Review Panel Session No. 4, follow up on previous advice
March 2019	Demolition notification	<ul style="list-style-type: none"> Update that activity is ramping up again. Closure of pedestrian and bike access path.
March 2019	A community update newsletter for Ryde LGA and key stakeholders	<ul style="list-style-type: none"> Update on project progress and how the ongoing feedback is being considered.
13 March 2019	GHD (project managers for TAFE Meadowbank redevelopment)	<ul style="list-style-type: none"> Informal meeting to present an overview of the concept design, impacts on TAFE property and program milestones
15 March 2019	Demolition notification	<ul style="list-style-type: none"> Information about removal of asbestos.
20 March 2019	Department of Planning and Environment, Transport for NSW, Roads and Maritime Services, City of Ryde Council, TAFE NSW, GHD (project managers for TAFE Meadowbank redevelopment)	<ul style="list-style-type: none"> The project team presented MEEPSP draft travel plan and led a discussion of the status of transport infrastructure and program delivery by others.
27 March 2019	Government Architect NSW (part of Department of Planning and Environment)	<ul style="list-style-type: none"> GANSW State Design Review Panel Session No. 5, follow up on previous advice
5 April 2019	GHD (project managers for TAFE Meadowbank redevelopment)	<ul style="list-style-type: none"> Informal meeting to provide an update on project progress
12 April 2019	City of Ryde Council	<ul style="list-style-type: none"> The project team presented the MEEPSP draft travel plan to senior technical managers and led a discussion of the status of Council traffic and transport initiatives.
17 April 2019	City of Ryde Council	<ul style="list-style-type: none"> The project team presented an update on the project to the Executive Team and led a discussion on traffic issues and community use of school facilities.
2 May 2019	Ryde Aboriginal Education Consultation Group representatives	<ul style="list-style-type: none"> SINSW discussed opportunities for Aboriginal involvement in the project's design.
3 May 2019	Government Architect NSW (part of Department of Planning and Environment)	<ul style="list-style-type: none"> GANSW State Design Review Panel Session No. 6, follow up on previous advice
Week of 13 May 2019	Letterbox drop Ryde LGA and key stakeholders	<ul style="list-style-type: none"> Community information session invitation.
24 May 2019	Meadowbank Public School and Marsden High School staff Q&A	<ul style="list-style-type: none"> Share how feedback has been considered in the updated design. Seek more feedback.
24 May 2019	Roads and Maritime Services, Transport for NSW	<ul style="list-style-type: none"> The project team presented the Traffic and Transport Impact Assessment and the School Travel Plan for discussion
Week of 27 May 2019	A community update newsletter for Ryde LGA and key stakeholders	<ul style="list-style-type: none"> Project update and EIS consultation details.
5 June 2019	TAFE Meadowbank	<ul style="list-style-type: none"> Technical Reference Group startup meeting for the Phase 2 TAFE campus development works

Date	Authority/Group	Tool/Activity
7 August 2019	TAFE Community Information and Feedback Session	<ul style="list-style-type: none"> Session coordinated by TAFE to share information and obtain feedback on the TAFE redevelopment
27 August 2019	GSC Community Group	<ul style="list-style-type: none"> Consultation session to obtain feedback from local businesses, organised by the Greater Sydney Commission
28 August 2019	Ausgrid project update	<ul style="list-style-type: none"> Meeting with Ausgrid as neighbouring landowner to present the project and obtain feedback

Appendix 1 – School information example

NSW Department of Education – School Infrastructure

Meadowbank Education Precinct

Information for parents, caregivers, students and staff of Marsden High School – July 2018

CONTEMPORARY
LEARNING & TEACHING
FACILITIES FOR UP TO

1,500

SECONDARY STUDENTS

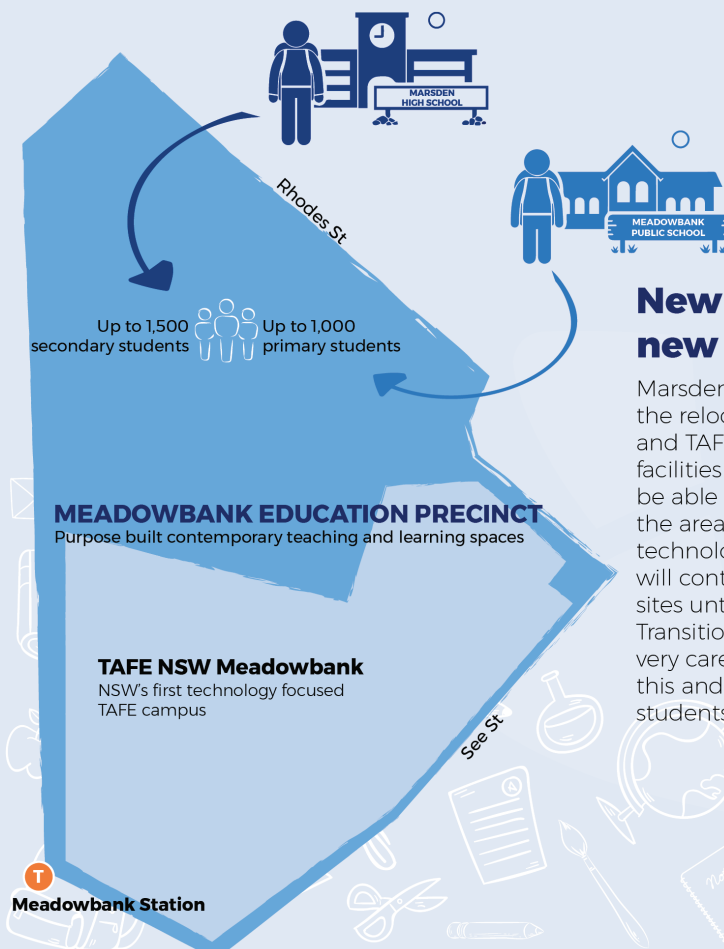
CO-LOCATING TAFE
NSW MEADOWBANK,
MEADOWBANK PUBLIC
SCHOOL AND MARSDEN
HIGH SCHOOL TO A
FUTURE-FOCUSED
EDUCATION PRECINCT

CONSTRUCTION

2019
TO
2021

Marsden High School is moving to new purpose-built facilities in the Meadowbank Education Precinct. This education precinct forms part of the NSW Government's \$6 billion program over four years to deliver new and upgraded schools across the state.

The Meadowbank Education Precinct involves three educational facilities



New facilities, new opportunities

Marsden High School will share the site with the relocated Meadowbank Public School and TAFE NSW Meadowbank. With brand new facilities and plenty of room, the schools will be able to cater for the growing population of the area and the TAFE will become NSW's first technology focused TAFE campus. Both schools will continue to operate on their current sites until the new precinct is ready, in 2021. Transition to the new site will be managed very carefully – we'll need your help help with this and in planning for the new school that students and staff will be moving into.



Planning of the relocated schools

Detail of the facilities for the relocated schools will be developed in collaboration with the school communities. Planning will be about the relocated schools but also how students will transition to the new precinct, focussing on learning outcomes and how the school community will be positively supported throughout. For example, supporting Years 6 and 12 students in transition years will be a top priority. Recognising each school's history will also be an important aspect of the planning process.

There will be many opportunities for staff, students, parents and caregivers as well as neighbours and the local community, to provide input into and feedback on the design of the schools. We're planning a number of ways for school communities to get involved and to keep up to date.



Frequently Asked Questions

Where are we moving to?

Marsden High School will be moving with Meadowbank Public School to brand new facilities, located along Rhodes Street in the northern area of the TAFE NSW Meadowbank site.

What facilities will be at the Meadowbank Education Precinct?

The education precinct has only just been announced. Your involvement in this will help shape what the school looks like and how it functions.

Why can't Marsden High School stay where it is?

The population in the area is growing dramatically. It's not practical to refurbish or extend the school at the current site. Moving to the new education precinct will ensure plenty of room where quality teaching and learning can continue in new, purpose built and architecturally designed facilities. Moving rather than renovating will also be less disruptive for staff and students.

Do I get a say in what happens?

Yes! Your feedback is really important to us. We are committed to working together with our school communities and stakeholders to deliver the best possible learning facilities. We can't implement everyone's suggestions but we will work with school communities to ensure we've considered what's important to you.

What's happening to our current school site?

The Marsden High School site will become a sporting facility.

When are we moving?

The new facilities are expected to be finished in 2021.

What about our school history and culture?

Recognising Marsden High School's history is a very important aspect of the planning process. What do you think is the best way we can do this? Please help us work with parents, caregivers and students to identify traditions and artefacts and how best to honour these and incorporate them in the new setting.

What can teachers tell parents, caregivers and students about what's happening?

It's early days yet, but you are all welcome to share everything you know – we need everyone to be communicating, sharing ideas and information, and letting us know your questions and suggestions too.

What's happening with Meadowbank Public School?

Meadowbank Public School is on the same timeline as Marsden High to move to the new education precinct when it is completed. The current Meadowbank Public School site will become public open space. We intend to work with the primary and high school together to co-design the new school facilities.

Are there facilities at the TAFE that we can use?

Major facilities will be separate, to ensure that students have access to facilities that are appropriate to their stage of learning and their age cohort.

However, there may be opportunities to develop much closer tertiary education relationships between the high school and TAFE. This is an area where it would be great to get your input as the project develops.



When will work start and finish?

Construction of the new facilities is due to start in 2019 and finish in 2021.

What about students who will be in Year 12 in 2021?

Supporting students as we move to the new site is a top priority. We welcome your help in planning a detailed transition process to make this a positive experience for all students and to minimise impacts especially for those in Year 12.

How will the relocated schools operate?

The relocated schools will benefit students in their transition from primary to high school. The precinct design will ensure student safety while enabling education partnerships between the two schools and with TAFE.

What's happening with the TAFE?

TAFE NSW Meadowbank will continue to operate on the southern part of the site and will be transformed into the State's first technology focused TAFE campus.

Will any staff lose their jobs?

All permanent staff will move to the new site with no job losses for permanent staff as a result of the relocation process.

More information?

Visit schoolinfrastructure.nsw.gov.au ask questions or make comments at schoolinfrastructure@det.nsw.edu.au or call 1300 482 651

How do we get there? What about parking, dropping off and so on?

The education precinct is very close to Meadowbank Station and is serviced by several bus routes. Sustainable travel options will be an important part of planning for the new facilities. We welcome your input as we consider how to make this safe and easy for everyone.

How can I find out what is happening as the project progresses?

We have lots of ideas for how to keep you up to date – social media, community newsletters, website updates – but what would work for you? Please tell us how you would like to be informed.

Will we have enough schools for this growing area?

Yes. Meadowbank Public School is being upgraded from 17 to 42 classrooms for 1,000 students. Marsden High School is going from around 800 students in 2018 to up to 1,500 students, and can grow another 500 students to meet long-term demand when required. We will also see:

- a new 1,000 student public school at Smalls Road
- an upgrade to West Ryde Public School
- an upgrade to Kent Road Public School



Digital survey
Scan this QR
code to tell us
what's important
to you



Check out a 'first
look' of what the
new campus
could look like

Appendix 2 – Community update newsletter examples

NSW Department of Education – School Infrastructure

Meadowbank Education Precinct Community Update – July 2018

CONTEMPORARY
LEARNING & TEACHING
FACILITIES FOR UP TO

1,000 PRIMARY
STUDENTS
&
1,500 SECONDARY
STUDENTS

CO-LOCATING TAFE
NSW MEADOWBANK,
MEADOWBANK PUBLIC
SCHOOL AND MARSDEN
HIGH SCHOOL TO A
FUTURE-FOCUSED
EDUCATION PRECINCT

CONSTRUCTION

2019
TO
2021

Dear Marsden and Meadowbank
School Communities

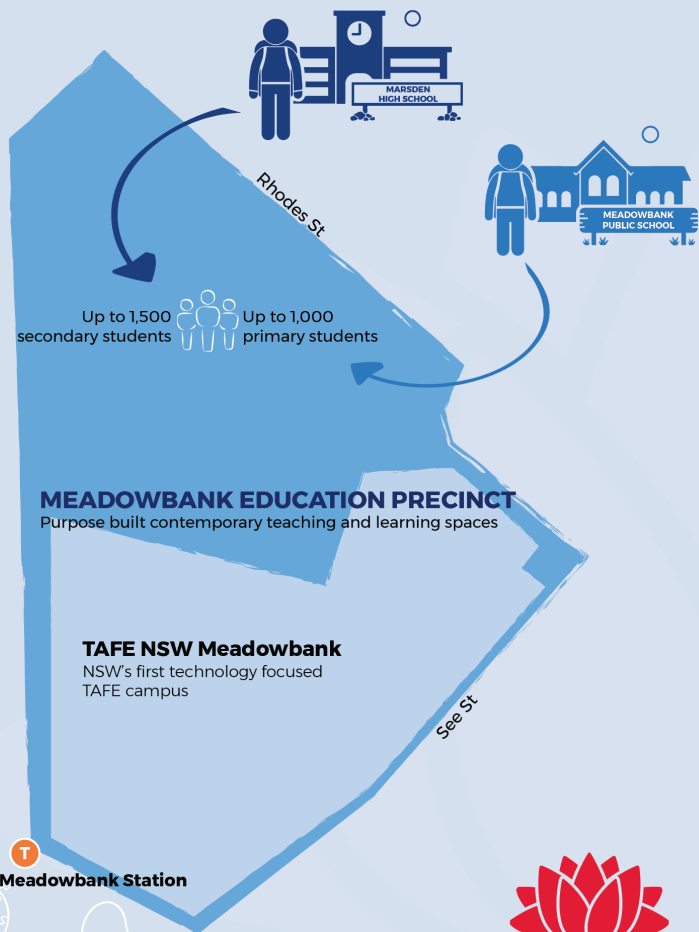
Did you see the news? A new education precinct in Meadowbank!

The Meadowbank Education Precinct forms part of the NSW Government's, \$6 billion program over four years to deliver new and upgraded schools across the state. It will have three educational facilities, with construction due to start in 2019 and finish in 2021.

So, what does this mean for you? A new school, a new school journey, new neighbours and new facilities and opportunities. The detail is still being planned and we are really keen to keep you updated. We want you to:

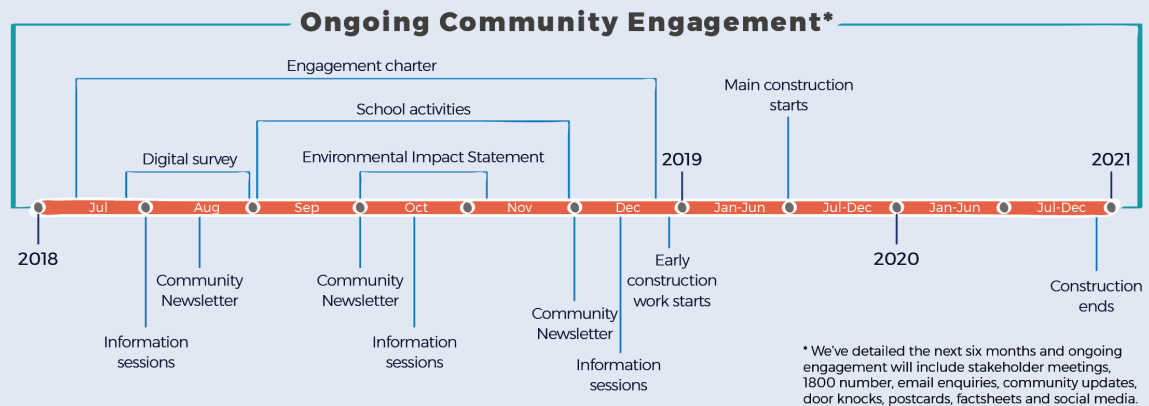
- Know what's going on
- Help inform our decisions
- Give feedback on ideas

But how do **YOU** want to be involved? We will provide regular newsletters to keep you updated. We will also introduce suggestion boxes, social media, smart phone surveys, visioning workshops, parent info nights and more.



What's next?

To start off with, we have held **drop in information sessions** for parents, caregivers and students.



We'd also like to develop an **Engagement Charter** with you. This will set out our commitments on how we will communicate, engage and work with you so we know what you expect and you know we will meet your expectations.

To do this, we need to survey the school communities on what is important. You can do this survey on your phone, computer or laptop. Scan the QR code or go to <https://swipengage.com/#/meadowbank> to do the survey.



Our **newsletters** will be:

- Full of information you need to know
- Come out only when there's something to say
- Be delivered to you by email, a text, post, in your school bag, your letterbox

The most important thing is that this will be **YOUR** newsletter because it will be **YOUR** school, **YOUR** neighbourhood.

So... what is there to know?

Here's what we know so far:

- Marsden High School and Meadowbank Public School will be moving to the TAFE NSW Meadowbank site
- The new school facilities will be located on the Rhodes Street side of the precinct
- The TAFE will be NSW's first tech-focused TAFE campus
- The relocated schools will accommodate up to 1,000 primary school students and up to 1,500 secondary students
- The current school sites will become public open space (Meadowbank PS) and a sporting facility (Marsden HS)

Planning of the relocated schools

Detail of the facilities for the relocated schools will be developed in collaboration with the school communities. Planning will be about the relocated schools but also how students will transition to the new precinct focussing on learning outcomes and how the school community will be supported throughout. For example, supporting Year 6 and Year 12 students in transition years will be a top priority. Recognising each school's history will also be an important aspect of the planning process.

There will be many opportunities for staff, students, parents and caregivers, as well as neighbours and the local community, to provide feedback on the design of the schools. We're planning a number of ways for school communities to keep up to date.



Frequently Asked Questions

Where are the schools moving to?

Meadowbank Public School and Marsden High School will be moving to brand new facilities, located along Rhodes Street in the northern area of the TAFE NSW Meadowbank site.

Why can't Meadowbank Public School and Marsden High School stay where they are?

The population in the area is growing dramatically and the schools are already near capacity. It's not practical to refurbish or extend either school at their current sites. Moving to the new education precinct will ensure plenty of room where quality teaching and learning can continue in new, purpose built and architecturally designed facilities. Moving rather than renovating will also be less disruptive for staff and students.

What facilities will be at the Meadowbank Education Precinct?

The education precinct has only just been announced. Your involvement in this will help shape what the schools look like and how they function.

Do I get a say in what happens?

Yes! Your feedback is really important to us. We are committed to working together with our school communities and stakeholders to deliver the best possible learning facilities. We can't implement everyone's suggestions but we will work with school communities to ensure we're considering what's important to you.

What's happening to the current school sites?

The Meadowbank Public School site will become public open space and the Marsden High School site will become a sporting facility.

What's happening with the TAFE?

TAFE NSW Meadowbank will continue to operate on the southern part of the site and will be transformed into the State's first technology focused TAFE campus.

When are the schools moving?

The new facilities are expected to be finished in 2021.

What about history and culture of the schools?

Recognising the history of the schools is an important aspect of the planning process. What do you think is the best way we can do this? Please help us work with parents and students to identify traditions and artefacts and how best to honour these and incorporate them in the new setting.

What about students who will be in Years 6 or 12 when the schools move?

Supporting students as we move to the new site is a top priority. We welcome your help in planning a detailed transition process to make this a positive experience for all students and to minimise impacts especially for those in Years 6 and 12.

How will the relocated schools operate?

The relocated schools will benefit students in their transition from primary to high school. The precinct design will ensure student safety while enabling education partnerships between the two schools and with TAFE.

What can teachers tell parents, caregivers and students about what's happening?

It's early days yet, but you are all welcome to share everything you know – we need everyone to be communicating, sharing ideas and information, and letting us know your questions and suggestions.

When will work start and finish?

Construction of the new facilities is due to start in 2019 and finish in 2021.

How will students and staff get to the new site? What about parking, dropping off and so on?

The education precinct is very close to Meadowbank Station and is serviced by several bus routes. Sustainable travel options will be an important part of planning for the new facilities. We welcome your input as we consider how to make this safe and easy for everyone.

Do you have other questions? Please contact us.

Will any staff lose their jobs?

All permanent staff will move to the new site with no job losses for permanent staff as a result of the relocation process.

How can I find out what is happening as the project progresses?

We have lots of ideas for how to keep you up to date – social media, community newsletters, website updates – but what would work for you? Please tell us how you would like to be informed.

Will we have enough schools for this growing area?

Yes. Meadowbank Public School is being upgraded from 17 to 42 classrooms for 1,000 students. Marsden High School is going from around 800 students in 2018 to 1,500 students, and can grow to cater for another 500 students to meet long-term demand when required. We will also see:

- a new 1,000 student public school at Smalls Road
- an upgrade to West Ryde Public School
- an upgrade to Kent Road Public School



More information?

Visit schoolinfrastructure.nsw.gov.au to ask questions or make comments at schoolinfrastructure@det.nsw.edu.au or call 1300 482 651



Check out a 'first look' of what the new campus could look like

Meadowbank Education Precinct

Community Update Newsletter – December 2018

NEW FACILITIES FOR:			DEMOLITION	CONSTRUCTION STARTS	CONSTRUCTION ENDS
1,000	1,500	120	DEC 2018 MID 2019	2019	2021
PRIMARY STUDENTS	SECONDARY STUDENTS	INTENSIVE ENGLISH CENTRE STUDENTS			

Investing in our schools

The NSW Government's 2018/19 Budget includes \$6 billion over four years to deliver more than 170 new and upgraded schools. A further \$160 million has also been invested as part of the record \$747 million maintenance investment announced last year. This is the largest investment in public education infrastructure in the history of NSW.

The Precinct

NSW Department of Education has been working with TAFE NSW to create the Meadowbank Education Precinct. The Precinct will provide opportunities for educational pathways to be created for students from kindergarten right through to completing a bachelor degree or diploma at TAFE NSW.

The primary school and high school will incorporate flexible contemporary learning spaces. TAFE NSW Meadowbank will be transformed into the State's first technology-focused TAFE delivering training to support industry needs.

Start of work

Site establishment has already begun for demolition work for the new school site.

You may have seen activity on site like:

- Delivery of materials
- Erecting construction fencing and hoarding
- Environmental and tree protection work
- Installing the site office and work sheds.

Demolition is scheduled to begin later in December and work hours will be between 7am and 5pm Monday to Saturday.

We will make sure this work is completed as safely and efficiently as possible. Minimising impacts on the community at every opportunity is our priority, particularly the neighbouring residents and businesses as well as the TAFE NSW Meadowbank community.



Demolition on the new school site

Demolition has started on the northern part of the TAFE NSW Meadowbank site and is expected to continue until June 2019. The timing of the activities below are indicative and may change due to weather and/or unforeseen circumstances.



We've heard your feedback

Feedback from the schools and the community has helped us understand some of the issues that are important to you. We have incorporated your ideas and feedback where possible and are continuing to consider a number of the issues that have been raised. We will continue to consult and listen to your feedback as we progress with the design.

Changes we've made using your feedback

A chicken coup and friendship tree included in the outdoor spaces at the primary school	Incorporation of Wallamattagal Learning Centre	Special needs learning spaces and learning support rooms
Integration of natural ventilation with airconditioning	Outdoor covered areas for wet weather and shade from the sun	Entry forecourt design adjustments allowing better community access
Separation of high school and primary school spaces	Design modifications in the drop off and pick up zones	Each school will have a dedicated hall, canteen, library and entry area. Improved functional layout
Lifts located to suit efficient movement of students throughout the building	Perimeter security in line with security design principles for student safety	Location of OSHC on the site
Location of the gym is now street side to allow access after hours	Inclusion of an all-weather seven a side football field	More ground level play space for primary school students

Things we are still considering

Integration of a sustainable travel plan including a variety of ways students will get to school	Spaces for structured and non-structured play	Storage space locations for sport, arts and music
Collaborative science labs	Location of toilets, bubbler/bottle refill stations	Improved access to the train station in collaboration with TAFE NSW
Traffic and parking requirements. We are working to address traffic issues from Victoria Road and other surrounding streets	Shape and sizing of the school halls	Accessibility requirements

More questions

We included answers to many frequently asked questions in previous updates (you can view them online schoolinfrastructure.nsw.gov.au). Below we have highlighted some of the frequently asked questions raised during community engagement.

Population growth

The Meadowbank Education Precinct is just one part of a major plan to cater for population growth in Ryde and across NSW. School projects in Ryde and its surrounds include the Macquarie Park Education Precinct and a new primary school at Smalls Road, as well as upgrades for West Ryde Public School, Denistone East Public School and Kent Road Public School.

What will happen to the zoning/catchment of the area?

The Meadowbank Education Precinct is currently in the catchment zone for both Marsden High School and Meadowbank Public School. There are no plans to change this – but zoning is reviewed regularly, and zone changes are made if there are significant population changes.

Why not keep Marsden High School open as well as open a new school?

The existing school buildings at Marsden High School can't be easily modified and there are many demountable classrooms. Relocating Marsden High School to the Meadowbank Education Precinct means teachers and students will have access to new contemporary teaching facilities and flexible learning spaces.

Is TAFE NSW Meadowbank closing?

No, TAFE NSW Meadowbank is not closing. TAFE NSW Meadowbank will continue to operate.

Meadowbank Education Precinct – early artist's impressions

The project team is continuing to develop the concept design. The artist's impressions give a sense of what the new schools at the Meadowbank Education Precinct will look like.

Artist's impression of the new schools at the Meadowbank Education Precinct



Next steps

We are committed to working together with our school communities, TAFE NSW and other stakeholders. Your feedback on this exciting project is important to us.

For more information contact:

School Infrastructure NSW
Email: schoolinfrastructure@det.nsw.edu.au
Phone: 1300 482 651
Website: schoolinfrastructure.nsw.gov.au



Appendix 3 – Drop in information session invitation examples

You're invited
Information drop in session for the
Meadowbank Education Precinct

**MEADOWBANK
EDUCATION
PRECINCT** ? Got questions?
Have a few ideas? 💡

Drop in and have a chat (one-on-one)
with the project team

Wednesday 1 August 2018, 6-8pm
Marsden High School

There will be more drop in sessions over the next few months

1300 482 651
schoolinfrastructure@det.nsw.edu.au
schoolinfrastructure.nsw.gov.au



You're invited
Information drop in session for the
Meadowbank Education Precinct

**MEADOWBANK
EDUCATION
PRECINCT** ? Got questions?
Have a few ideas? 💡

Drop in and have a chat (one-on-one)
with the project team

Tuesday 31 July 2018, 6-8pm
Meadowbank Public School

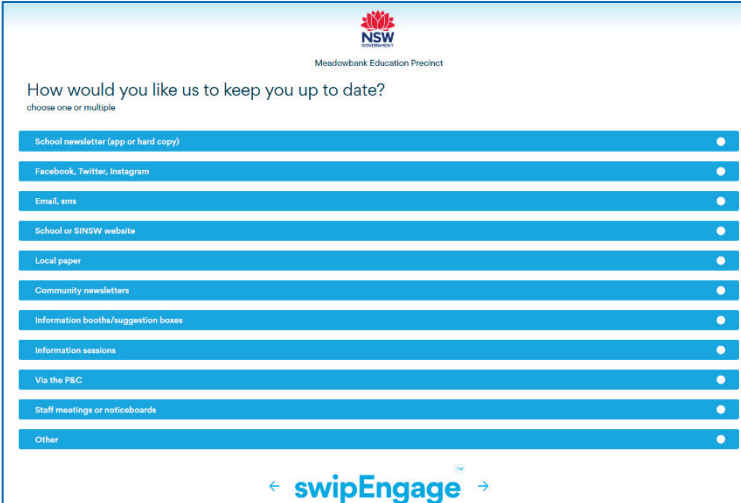
There will be more drop in sessions over the next few months

1300 482 651
schoolinfrastructure@det.nsw.edu.au
schoolinfrastructure.nsw.gov.au



Appendix 4 – swipEngage digital survey tool

Sample survey questions:



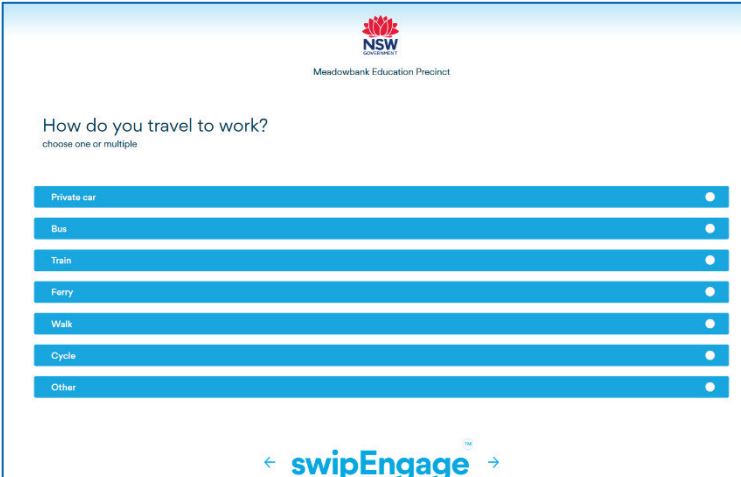
NSW
Department of Education

Meadowbank Education Precinct

How would you like us to keep you up to date?
choose one or multiple

- ☐ School newsletter (app or hard copy)
- ☐ Facebook, Twitter, Instagram
- ☐ Email, sms
- ☐ School or S/NSW website
- ☐ Local paper
- ☐ Community newsletters
- ☐ Information booths/suggestion boxes
- ☐ Information sessions
- ☐ Via the P&C
- ☐ Staff meetings or noticeboards
- ☐ Other

← swipEngage →



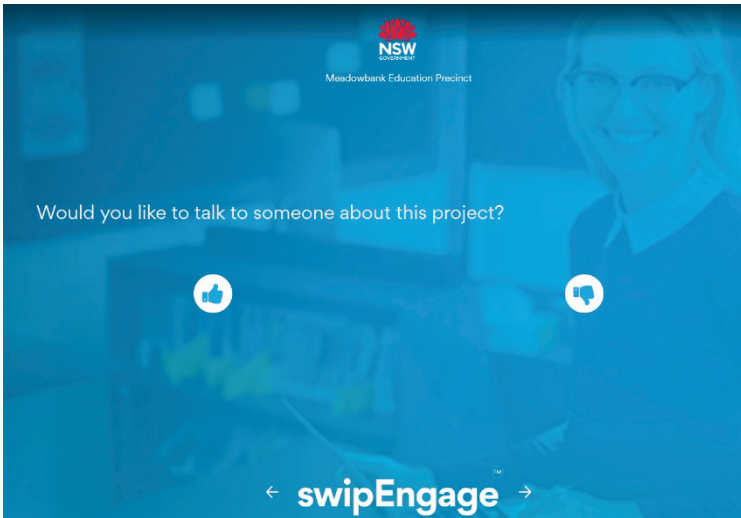
NSW
Department of Education

Meadowbank Education Precinct

How do you travel to work?
choose one or multiple

- ☐ Private car
- ☐ Bus
- ☐ Train
- ☐ Ferry
- ☐ Walk
- ☐ Cycle
- ☐ Other

← swipEngage →



NSW
Department of Education

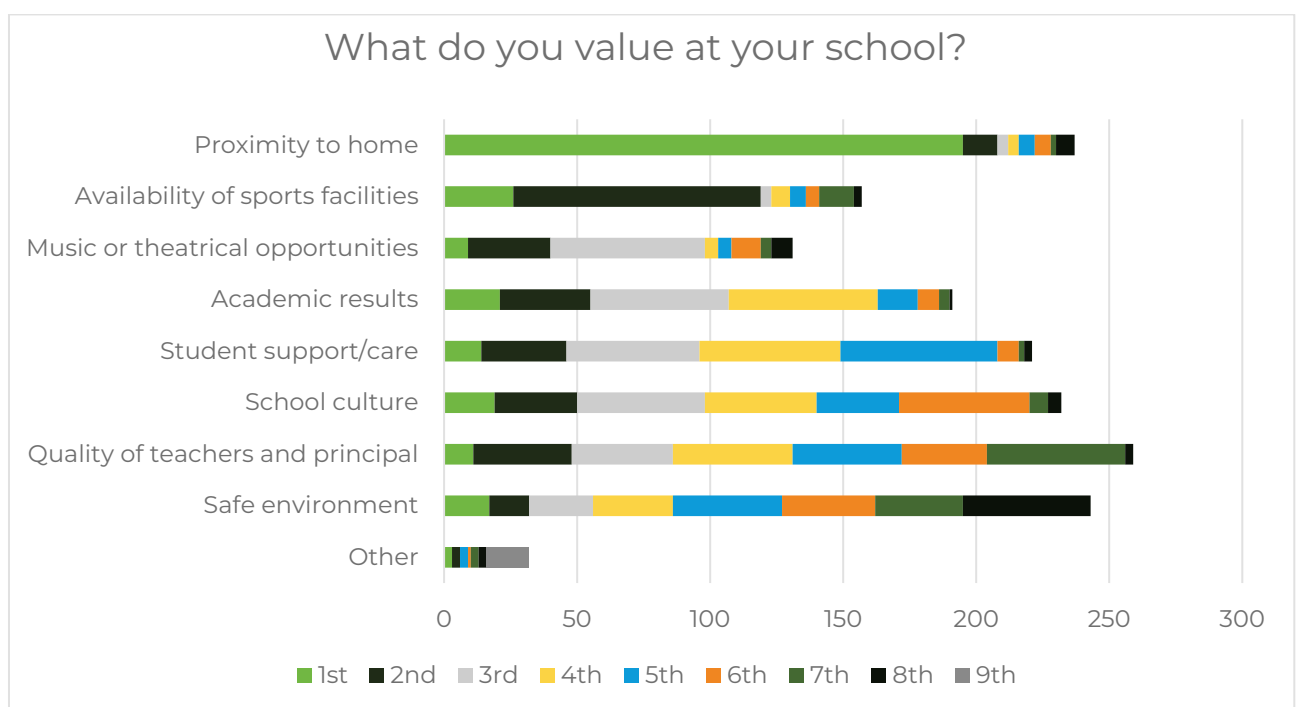
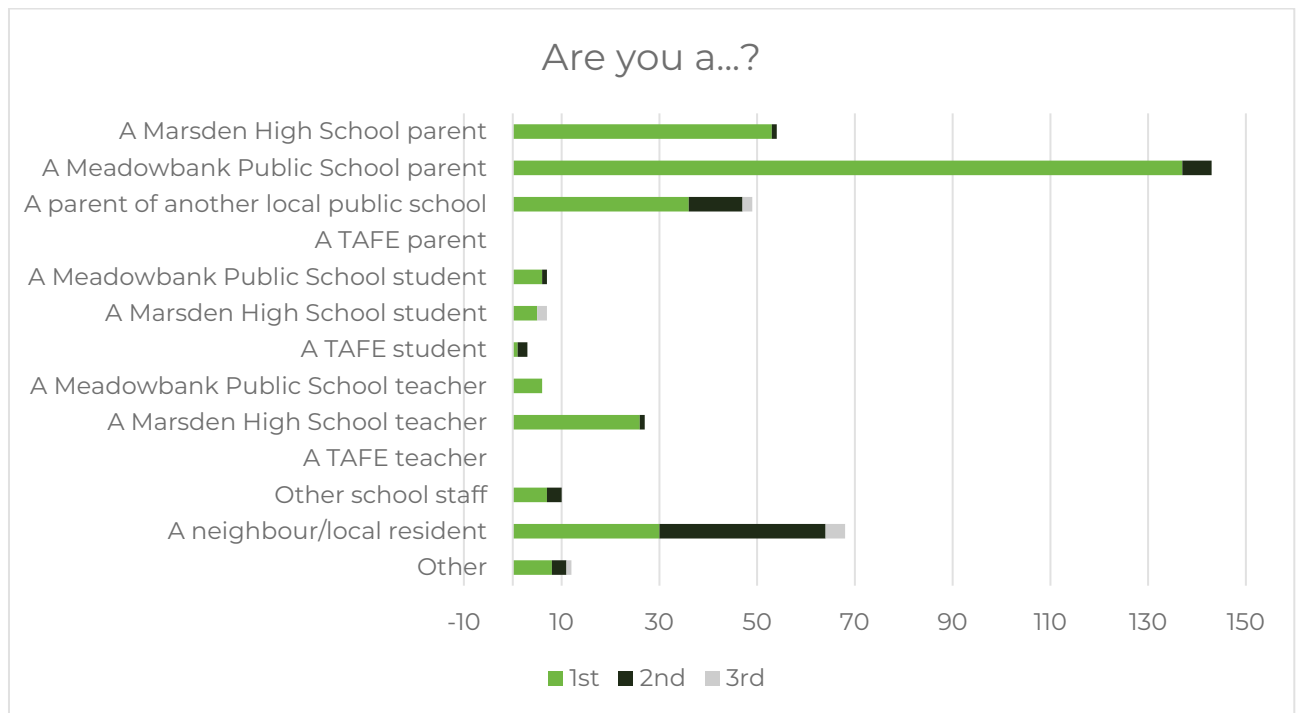
Meadowbank Education Precinct

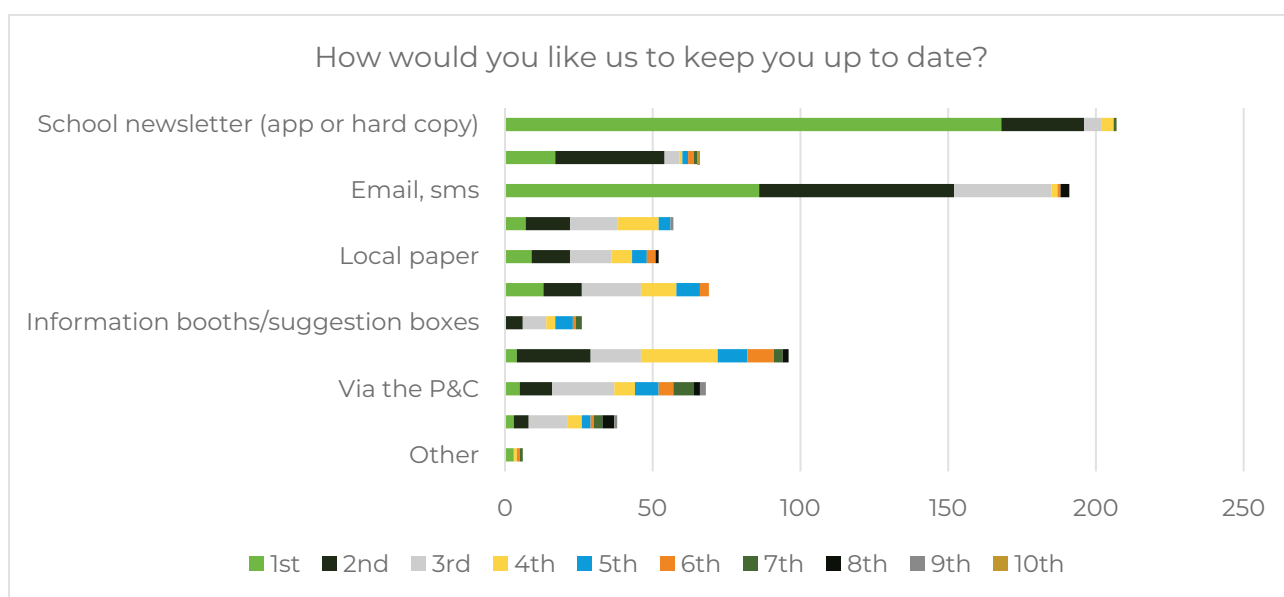
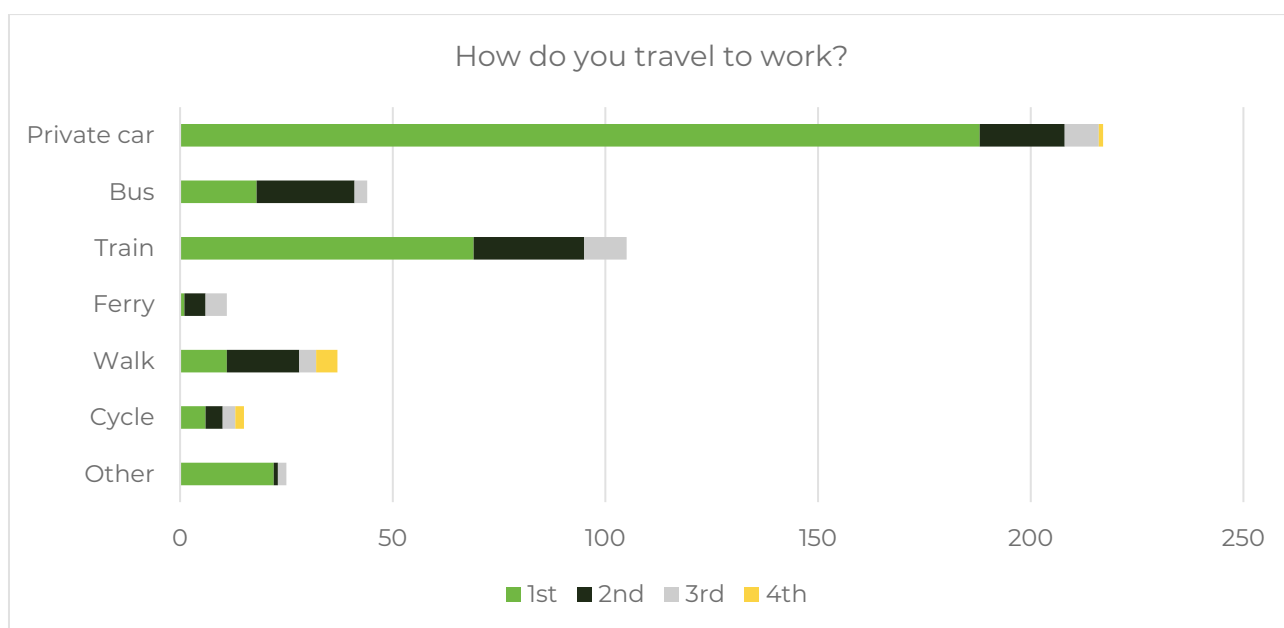
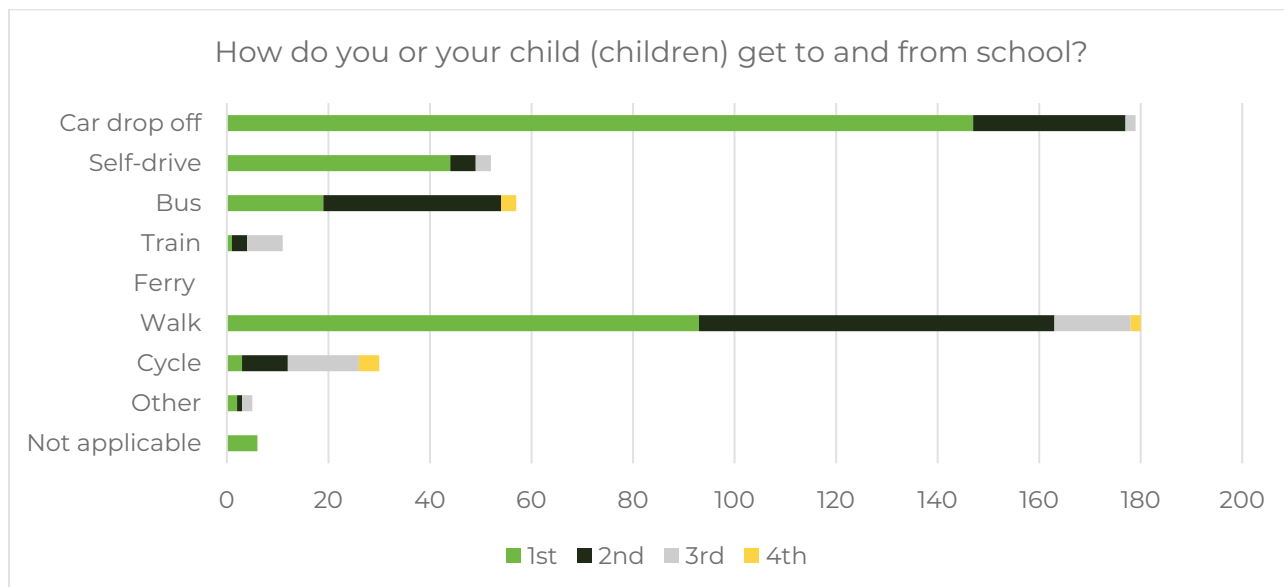
Would you like to talk to someone about this project?

☐ Yes ☐ No

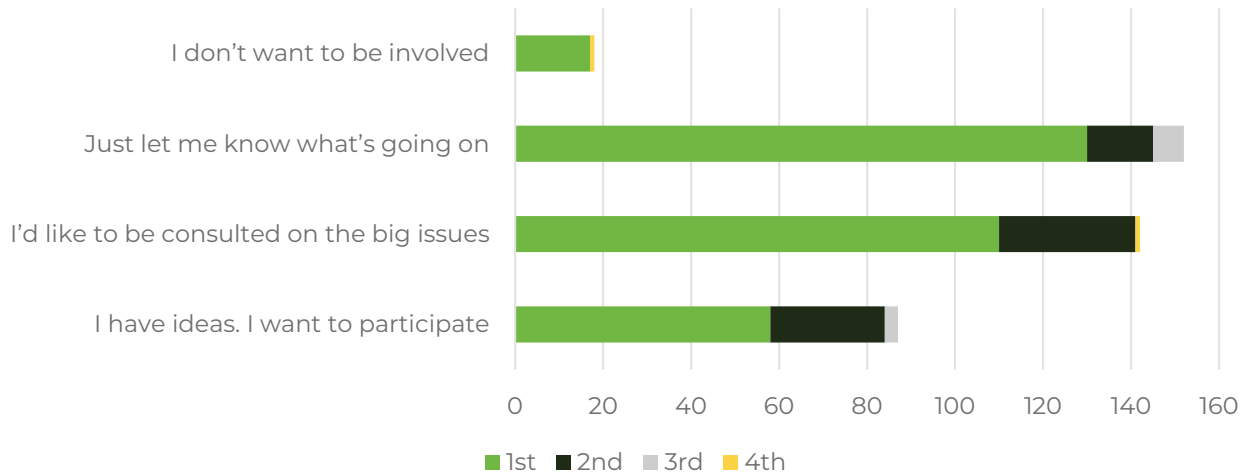
← swipEngage →

Survey responses:

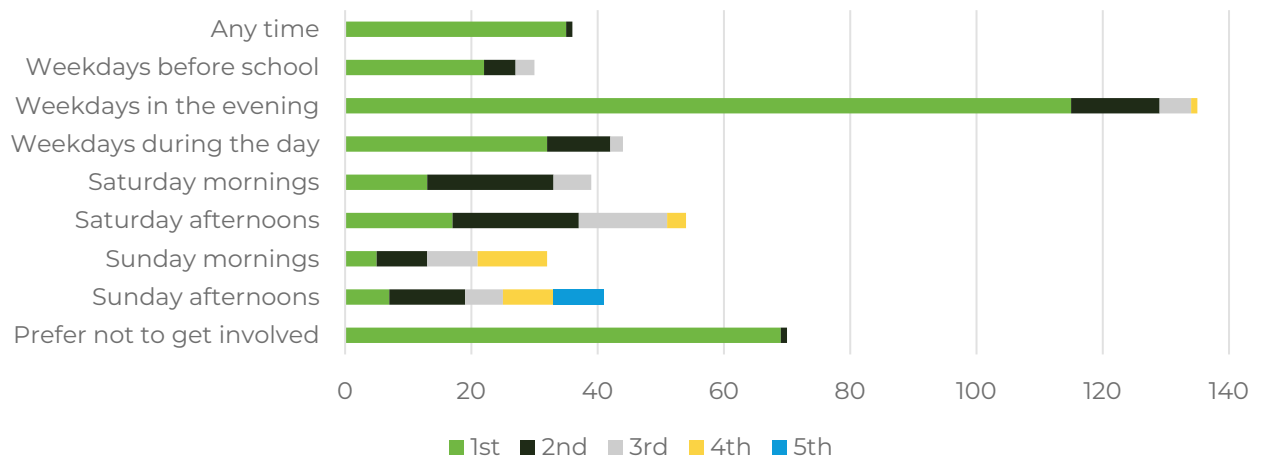




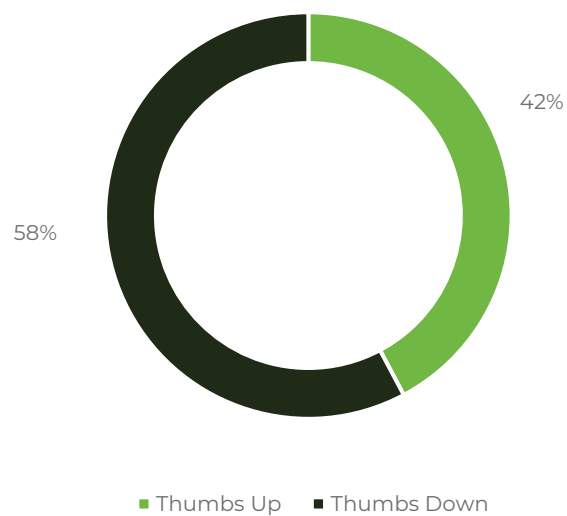
How much do you want to be involved in planning activities?



What time are convenient for you to get involved?

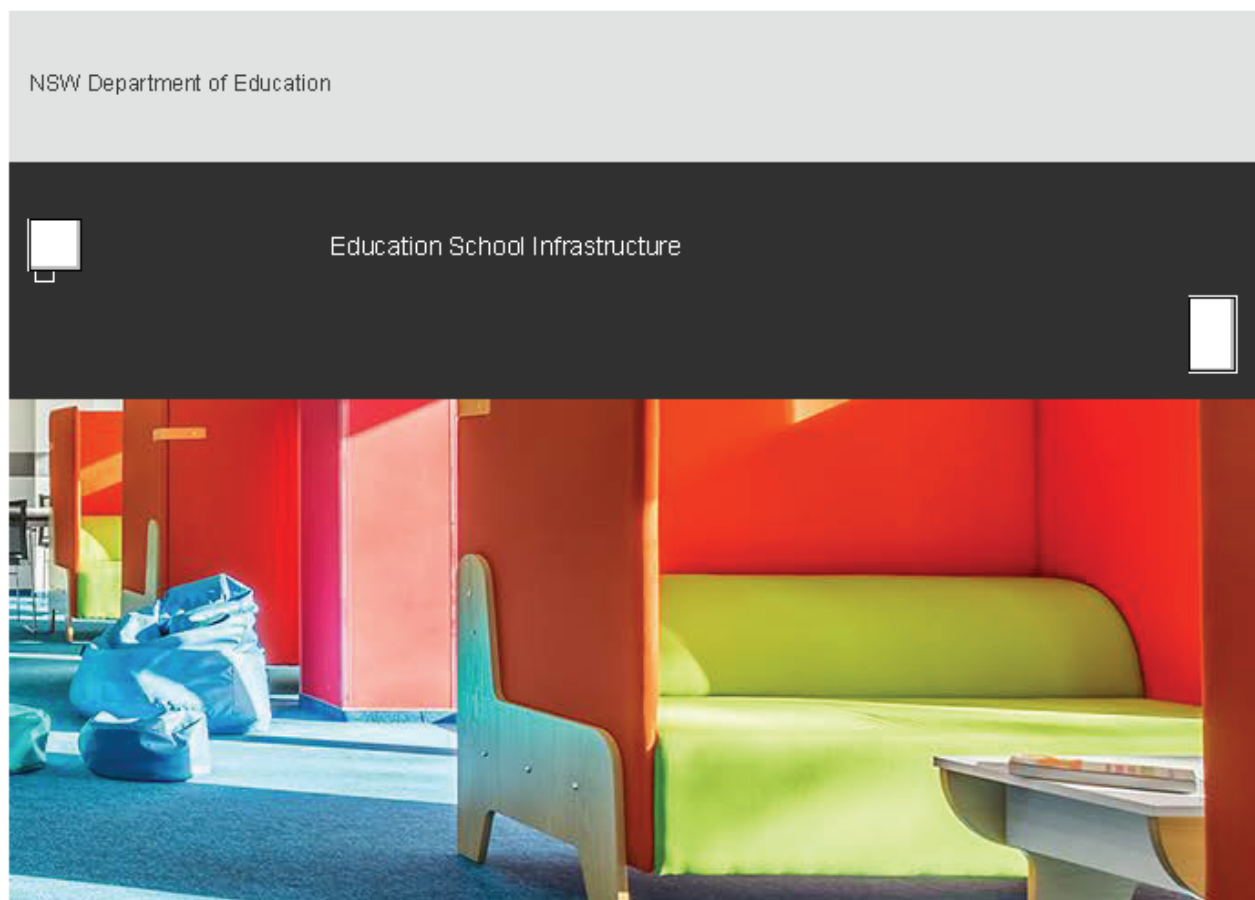


Would you like to talk to someone about this project?



Appendix 5 – Project webpage

Meadowbank Education Precinct



Meadowbank Education Precinct (new schools in Ryde)

The NSW Government is spending \$6 billion over four years to deliver more than 170 new and upgraded schools. This includes an additional \$160 million spend in 2018/19 as part of the record \$747 million maintenance investment announced last year. This is the biggest investment in public school infrastructure in the history of NSW.

Project status

Planning

Design

In progress

Complete

Project type

New school

<https://www.schoolinfrastructure.nsw.gov.au/projects/m/meadowbank-education-precinct.html>[27/08/2018 11:16:31 AM]

Welcoming students from Kindergarten to Year 12, the new Meadowbank Education Precinct will include two schools – a primary school and secondary school – alongside the State's first technology focused TAFE college.

Meadowbank Public School will increase its capacity to 1000 places, following its relocation to the new Precinct.

Marsden High School will be relocated to the new Education Precinct and will accommodate up to 1500 secondary school students.

The Department of Education is committed to engaging with TAFE and the school community as well as with the local community.



Video: A first look at the Meadowbank Education Precinct

Funding year

2017/18

Status

Design phase

Commencement

Early 2019

Forecast completion

2021

Electorate

Ryde

Progress summary

- The scope of the project has been finalised.
- Education model and principles have been finalised.
- Concept design has commenced.

Next steps

- Progress the concept design
- Commence investigations to develop an environmental impact statement

How can I get involved?

We are committed to working together with our school communities and other stakeholders to deliver the best possible learning facilities

<https://www.schoolinfrastructure.nsw.gov.au/projects/m/meadowbank-education-precinct.html>[27/08/2018 11:16:31 AM]

for students.

Online survey

Participate in our [online survey](#) ☐ to let us know how you want to be involved in this project. Your responses will provide valuable input into the planning and development of the Meadowbank Education Precinct.

Your feedback on this exciting project is important to us. For more information, questions or to make a comment please email us at schoolinfrastructure@det.nsw.edu.au

Frequently asked questions

[Read frequently asked questions and answers here.](#)

CONTACT US

Level 8, 259 George Street, Sydney NSW
2000

MAIL: GPO Box 33, Sydney, NSW 2001

EMAIL: schoolinfrastructure@det.nsw.edu.au

FOR ALL SCHOOL INFRASTRUCTURE
NSW

MEDIA ENQUIRIES:

media.advisor@det.nsw.edu.au

CONNECT WITH US



<https://www.schoolinfrastructure.nsw.gov.au/projects/m/meadowbank-education-precinct.html>[27/08/2018 11:16:31 AM]

Appendix 6 – FAQs

NSW Department of Education – School Infrastructure NSW



Meadowbank Education Precinct Frequently Asked Questions

The growing community in the Meadowbank area is set to receive new, purpose built education facilities on part of the Meadowbank TAFE site.

Why not keep Marsden High School open as well as open a new school?

The existing school buildings at Marsden High School can't be easily modified and there are many demountable classrooms. Relocating Marsden High School to Meadowbank Education Precinct means teachers and students will have access to new facilities, purpose built for teaching and learning in the 21st century.

Don't we need new schools, not just moved schools?

The new education precinct is just one part of a major plan to provide students across Ryde and NSW with the very best educational opportunities, with 170 new and upgraded schools across the state. This includes six other school projects in Ryde.

Other projects include the Macquarie Park Education Precinct; Kent Road Public School Upgrade; a new primary school at Smalls Road; West Ryde Public School Upgrade; Denistone East Public School Upgrade; and Kent Road Public School Upgrade.

What will be happening with free play areas like an oval?

We're looking at a range of outdoor spaces for both schools – quiet spaces, open green spaces, structured sporting spaces and creative spaces. This is a key part of designing the school precinct.

How will the Kiss and Ride zones work?

Student safety is a top priority in designing the new Meadowbank Education Precinct. Community input will be key in how the new drop off and pick up zone/s will be designed. Of course, parents as drivers have a responsibility to behave safely and comply with the rules but we also recognise the opportunity to design these zones to be as quick, easy and safe as possible for busy parents and carers.

We've already heard from many parents, teachers and Kiss & Ride volunteers with ideas on how to make this work safely – thank you!

What will be happening to the existing school sites?

We recognise that the future use of the school sites has been an issue of concern. There is a strong view that the Marsden High School site should be retained for educational use if required in the future. This is outside the scope of the project and is a conversation for another forum.

What will happen to the zoning/catchment of the area?

The Meadowbank site is currently in the catchment zone for both Marsden High School and Meadowbank Public School.

There are no plans to change this – but zoning is reviewed regularly, and zone changes are made if there are significant population changes.

schoolinfrastructure.nsw.gov.au



Will the precinct be in close proximity to an electricity substation?

The Ausgrid zone substation in Meadowbank is more than 60 metres away from the closest point of the proposed footprint for the new school at the Meadowbank Education Precinct. Health impacts as a result of exposure to electromagnetic fields are considered extremely rare and this distance is considered safe. Indeed, there are many residential properties that are closer than the new school to the substation.

Why not upgrade and expand the existing schools?

The original school on the site of the existing Meadowbank Public School was officially opened as an Infants School in 1950. It is on a small site that is already near capacity and we know the student population is forecast to increase significantly over the next decade.

At Marsden High School, some of the buildings need to be upgraded, and their design is not easily able to be modified to foster more flexible, future-focused learning.

By building new facilities on another site, we avoid disruption to the staff and students at both schools and maximise the opportunities for innovative design and educational partnerships with TAFE NSW.

What will happen to the existing school sites once staff and students move to the new precinct?

The existing Marsden High School site will become a sporting facility primarily catering for netball, while the current Meadowbank Public School site will become public open space once the move is complete.

Where will the new education precinct be located?

The new education precinct will be located along Rhodes Street in the northern area of the TAFE NSW Meadowbank site.

When will construction of the new schools start?

Construction of the new schools is expected to start in 2019 after we have consulted with the community and received all the necessary construction approvals.

When will construction of the new schools be completed?

It is planned that the construction of the education precinct will be completed in 2021.

What consideration will be given to students in Year 12 in 2021?

Supporting Year 12 students in 2021 will be a very high priority. We are planning a detailed transition process to minimise impacts to all students and will provide many opportunities for students to get familiar with their new learning environment.

What will happen to the roles of the two principals and teaching staff at both schools, as well as office staff and general assistants?

All our permanent staff will be able to move to the new site. No permanent staff member will lose his or her job as a result of the relocation process.

When will the NSW Department of Education share the plans for the new schools?

There are no plans for the new schools other than what has been announced. The school and broader community will be engaged as plans for the site are developed.

Who is designing the new schools?

Architects, Woods Bagot, have been engaged to prepare the design of the schools at the new precinct.

Who and what is driving planning for the new schools?

New schools are planned in line with the Educational Facilities Standards and Guidelines. Project governance includes a Project Reference Group, made up of key stakeholders. Engagement with parents, students, staff and the wider community will provide the project team with information that will inform the planning process.

Will the history of Meadowbank Public School and Marsden High School be honoured?

Suitable recognition of each school's history is a very important aspect of the planning process and the project team is committed to ensuring that the heritage and legacy of both schools are honoured. Current and past students, staff and parents will be invited to work together to identify aspects of each of the school's traditions that need to be incorporated into the new precinct. Respect will be shown for school archives, honour boards and other significant items and these will be housed in the new schools in appropriate locations.

Will staff, students and parents at Meadowbank Public School and Marsden High School be consulted about the design of the new education precinct?

Yes. There will be many opportunities for staff, students and parents, as well as neighbours and the local community, to provide input into and feedback on the design of the schools.

For more information contact:

School Infrastructure NSW
Email: schoolinfrastructure@det.nsw.edu.au
Phone: 1300 482 651
Address: Level 8, 259 George Street,
Sydney NSW 2000

schoolinfrastructure.nsw.gov.au



Appendix 7 – AECG minutes



Education
School Infrastructure

Meadowbank Education Precinct

Minutes – SINSW and AECG Meeting Meadowbank Education Precinct

Date and Time	02/05/2019 8:30am
Venue	Hornsby TAFE Cafeteria

Invitee	Organisation	Role
Justin Barrett (JB)	School Infrastructure NSW (SINSW)	Senior Project Director
Karissa Kendall (KK)	SINSW	Associate Project Director
Esben Jensen (EJ)	SINSW	Community Engagement Manager
Dave Lardner (DL)	Aboriginal Education Consultative Group Inc. (AECG)	Ryde 2019 President
Lea Harlow (LH)	AECG	Ryde 2019 Secretary

Item	Description	Responsibility
1	Introductions and welcome.	Note
2	JB provided a Project overview noting that the Project is approaching the Detailed Design (DD) phase, which will require AECG involvement.	Note
3	SINSW to inform the AECG whether any consultation has occurred with the Metropolitan Local Aboriginal Land Council (MetroLALC).	EJ
4	SINSW to provide the AECG with information regarding Aboriginal involvement and the subsequent outcome on other SINSW Projects such as the Arthur Philip High School Redevelopment and the Cammeraygal High School Project.	JB
5	DL and LH suggested opportunities for Aboriginal involvement within the Projects design including: <ul style="list-style-type: none"> - Landscape - Yarning circle(s) - Bennelong - Parramatta river - Aboriginal local language 	Note
6	It was determined that SINSW will present at the next Ryde local Aboriginal Consultative Group (ACG) meeting on the 12 June 2019.	JB
7	SINSW to provide the AECG with a link to the Projects State Significant Development Application (SSDA) during the public exhibition period.	JB
8	It was agreed that continued consultation will occur, with an AECG representative attending the Projects monthly Project Reference Group (PRG) meeting.	Note
9	DL suggested that SINSW contact Kylie-Anne Watts, TAFE NSW Aboriginal Engagement Coordinator, regarding whether she would be an appropriate AECG representative to attend the above.	JB

Document prepared by

Aurecon Australasia Pty Ltd

ABN 54 005 139 873

Level 5, 116 Military Road
Neutral Bay NSW 2089

PO Box 538
Neutral Bay NSW 2089
Australia

T +61 2 9465 5599

F +61 2 9465 5598

E sydney@aurecongroup.com

W aurecongroup.com

aurecon

*Bringing ideas
to life*

Aurecon offices are located in:

Angola, Australia, Botswana, China,
Ghana, Hong Kong, Indonesia, Kenya,
Lesotho, Macau, Mozambique,
Namibia, New Zealand, Nigeria,
Philippines, Qatar, Singapore, South Africa,
Swaziland, Tanzania, Thailand, Uganda,
United Arab Emirates, Vietnam.