

Attn: Mr. James Stanfield
Mantle Group
c/- Ridgemill
Level 1, 16 Marie Street
Milton
QLD 4064

20 February 2018

Level 10, 201 Kent Street
PO Box 76 Millers Point
Sydney NSW 2000
Australia

t +61 2 9320 9320
d +61 2 9320 9921
m +61 416 161 856
f +61 2 9320 9321

graeme-s.wood@arup.com
www.arup.com

Tenancy 5, Overseas Passenger Terminal, Sydney

Dear Mr. Stanfield,

Please find herein comments regarding the expected impact on the local wind conditions due to the architectural changes to the proposed Tenancy 5 development at the Overseas Passenger Terminal, Sydney.

The overall development massing has not changed since the previous wind study reported by CPP in the report entitled Tenancy 5, Overseas Passenger Terminal dated 12 May 2017. There are some minor architectural changes to the development including the installation of four operable horizontal sun-shading elements (3 on ground level, and one on the upper level), and bi-fold doors to the tenancy, Figure 1 and Figure 2.

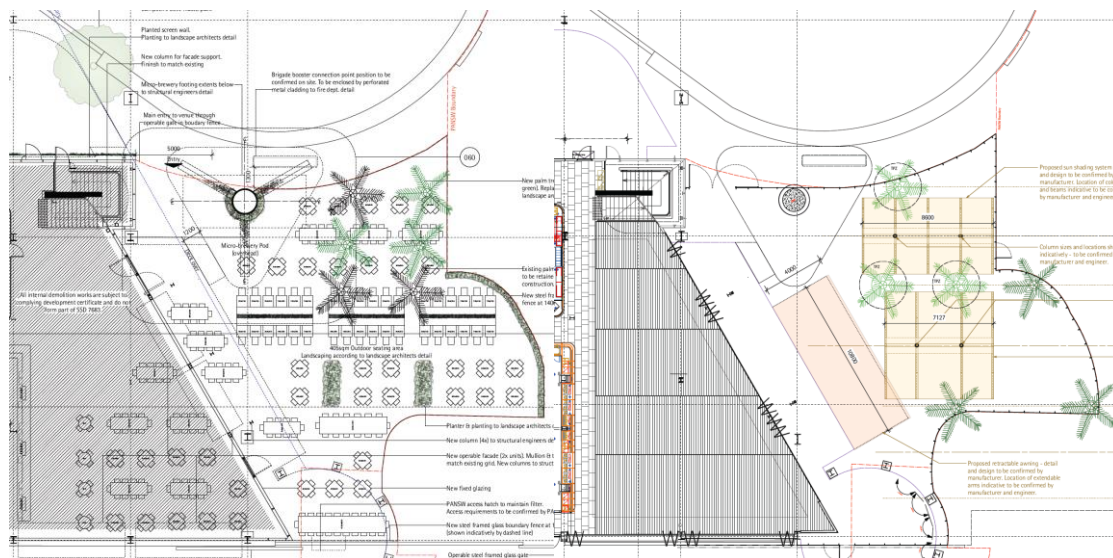


Figure 1: Ground, Level 1, floor plan existing (L), proposed (R)

As the wind flow around this area is expected to be essentially horizontal, the proposed horizontal structures when either open or closed would be expected to have a negligible impact on the local wind conditions compared with the previous design. When extended, the structures would marginally improve the wind conditions in and around the development. The operability of the sunshades and the tenancy bi-fold doors will increase the flexibility of the space from an environmental comfort perspective for patrons. From a wind and environmental perspective, the inclusion of these elements is considered to be beneficial to the design of the development.

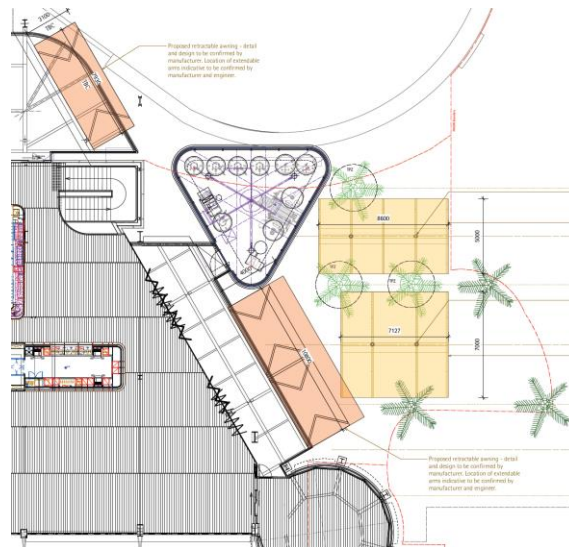


Figure 2: Proposed Level 2 floor plan

I hope this is of assistance, please do not hesitate to contact me on (02) 9551 2000, if you have any questions regarding any aspect of this report.

Yours sincerely,

Graeme Wood
Associate Principal