

LEGEND

PROJECT CONTROL SCHEDULE

- ELECTRICAL**
- ☐¹⁰ CABLE JUNCTION BOX
 - ¹⁰ CABLE MANHOLE
 - ☐¹⁰ DISTRIBUTION FUSE POINT
 - ☐¹⁰ GARDEN LIGHT
 - ☐¹⁰ POLE - LIGHT
 - ☐¹⁰ POLE - POWER
 - ☐¹⁰ POLE - POWER & LIGHT
 - ☐¹⁰ POWER SERVICE PILLAR
 - ☐¹⁰ TRANSFORMER CABINET CENTRE

- TRAFFIC CONTROL**
- ☐¹⁰ TRAFFIC CONTROL SIGNAL
 - ☐¹⁰ TRAFFIC SIGNAL CONTROLLER
 - ☐¹⁰ TRAFFIC SIGNAL DETECTOR
 - ☐¹⁰ TRAFFIC SIGNAL JUNCTION BOX

- COMMUNICATIONS**
- ☐¹⁰ TELEPHONE DISTRIBUTION PILLAR
 - ☐¹⁰ ABOVE GROUND JOINING POST
 - ☐¹⁰ OPTICAL FIBRE JUNCTION BOX
 - ☐¹⁰ OPTICAL FIBRE PIT
 - ☐¹⁰ STD MAIN PIT
 - ☐¹⁰ TELEPHONE BOX POINT
 - ☐¹⁰ TELEPHONE POLE
 - ☐¹⁰ TELEPHONE SINGLE CONCRETE PIT
 - ☐¹⁰ TELEPHONE TRIPLE CONCRETE PIT
 - ☐¹⁰ TELEPHONE TWIN CONCRETE PIT

- GAS**
- ☐¹⁰ MANHOLE COVER
 - ☐¹⁰ METER
 - ☐¹⁰ PIPELINE MARKER
 - ☐¹⁰ PIPELINE MARKER - HIGH PRESSURE
 - ☐¹⁰ VALVE BOX
 - ☐¹⁰ VENT PIPE
 - ☐¹⁰ TEST POINT

- WATER**
- ☐¹⁰ AIR VALVE
 - ☐¹⁰ EARTH TERMINAL
 - ☐¹⁰ FIRE HYDRANT
 - ☐¹⁰ HYDRANT
 - ☐¹⁰ METER
 - ☐¹⁰ STOP VALVE
 - ☐¹⁰ TAP

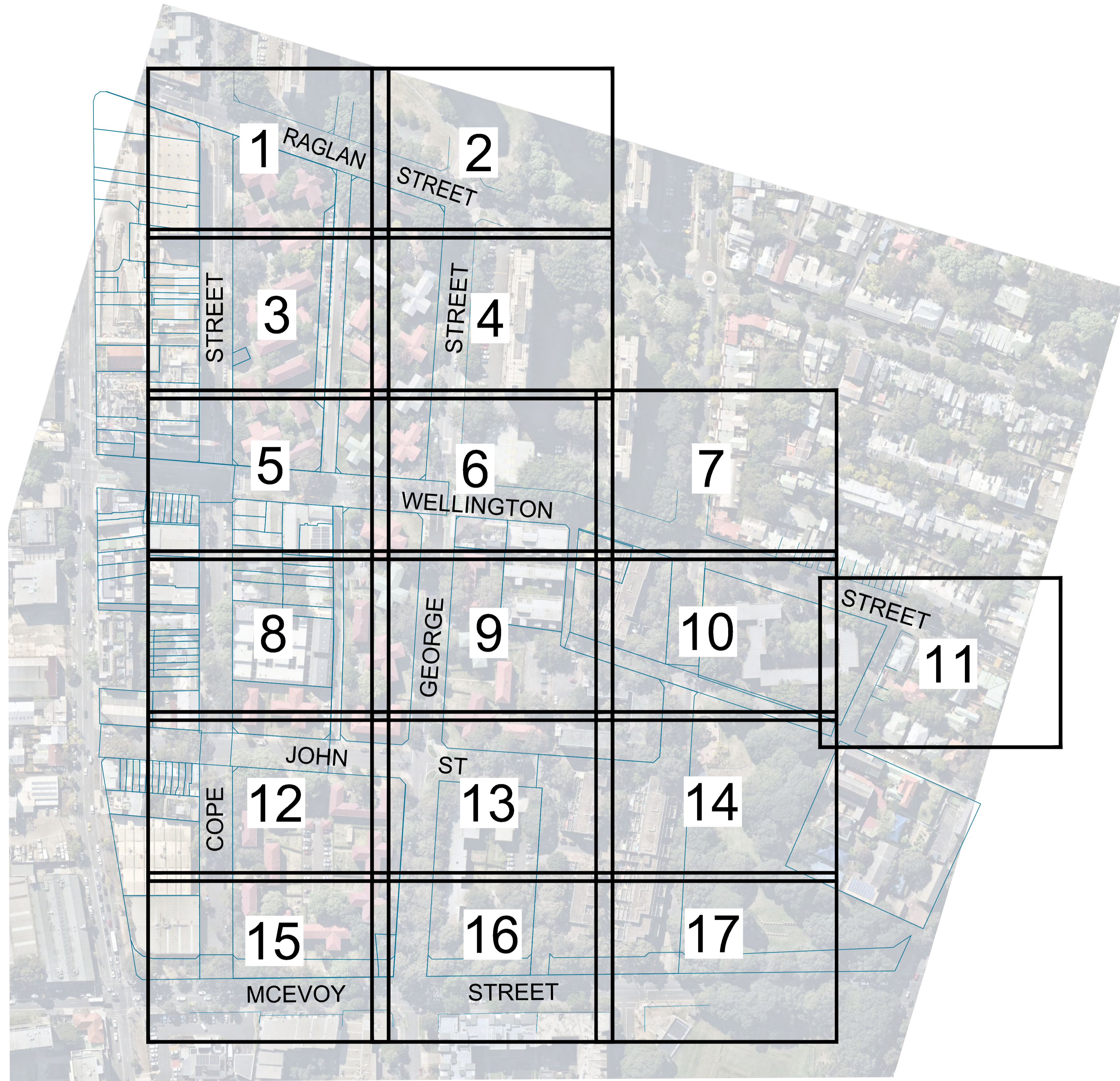
- SEWER**
- ☐¹⁰ MANHOLE COVER
 - ☐¹⁰ VENT PIPE
 - ☐¹⁰ LAMPHOLE

- DRAINAGE / STORMWATER**
- ☐¹⁰ DRAINAGE JUNCTION MANHOLE
 - ☐¹⁰ GULLY PIT POINT
 - ☐¹⁰ INLET TO SUMP
 - ☐¹⁰ INVERT OF PIPE
 - ☐¹⁰ CONCRETE JUNCTION BOX
 - ☐¹⁰ SUBSOIL DRAIN FLUSH POINT
 - ☐¹⁰ KERB INLET

- CULTURAL**
- ☐¹⁰ SIGN POST
 - ☐¹⁰ LARGE SIGN
 - ☐¹⁰ BOLLARD
 - ☐¹⁰ FLOOR LEVEL
 - ☐¹⁰ CORNER OF BUILDING
 - ☐¹⁰ PARKING METER
 - ☐¹⁰ AIR-CONDITIONER

- MISCELLANEOUS**
- ☐¹⁰ GATIC COVER LID
 - ☐¹⁰ UNIDENTIFIED POLE
 - ☐¹⁰ UNIDENTIFIED SERVICE PIT
 - ☐¹⁰ TREE

MARK	MGA2020 COORDINATES		AHD71	TYPE	DESCRIPTION
	EASTING	NORTHING			
PMS9542	333556.526	6247616.285	15.138	PPMK	FD IN FOOTPATH
SS24976	334116.523	6247294.591	22.028	PSSM	FD IN TOP OF KERB INLET PIT LINTEL
SS53815	333813.114	6247488.45	16.641	PSSM	FD IN GUTTER
SS78042	333940.402	6247095.343	17.329	PSSM	FD IN FOOTPATH
SS97196	333984.252	6247398.896	23.771	PSSM	FD IN GUTTER
SS195240	333845.027	6247353.69	16.863	PSSM	FD IN TOP OF KERB
SS195241	333889.271	6247217.987	16.389	PSSM	FD IN TOP OF KERB
WL01	333767.868	6247480.177	16.202	PBLT	PL IN FOOTPATH
WL02	333688.246	6247462.506	15.281	PBLT	PL IN FOOTPATH
WL03	333792.232	6247568.121	16.715	PBLT	PL IN FOOTPATH
WL04	333888.694	6247523.984	21.234	PBLT	PL IN FOOTPATH
WL05	333840.342	6247428.458	16.442	PBLT	PL IN TOP OF KERB
WL06	333773.96	6247646.65	16.368	PBLT	PL IN FOOTPATH
WL07	333752.656	6247744.832	17.64	PBLT	PL IN FOOTPATH
WL08	333720.771	6247635.332	15.403	PBLT	PL IN PRAM RAMP
WL09	333658.041	6247622.08	14.704	PBLT	PL IN TOP OF KERB
WL10	333861.381	6247682.36	21.562	PBLT	PL IN TOP OF KERB
WL11	333695.464	6247740.381	16.314	PBLT	PL IN FOOTPATH
WL12	333674.072	6247829.248	17.061	PBLT	PL IN FOOTPATH
WL13	333735.06	6247827.892	18.351	PBLT	PL IN FOOTPATH
WL14	333591.886	6247852.612	16.483	PBLT	PL IN FOOTPATH
WL15	333625.608	6247739.979	15.438	PBLT	PL IN FOOTPATH
WL16	333679.929	6247551.279	14.478	PBLT	PL IN FOOTPATH
WL17	333746.794	6247565.732	15.78	PBLT	PL IN FOOTPATH
WL18	333752.094	6247344.277	17.69	PBLT	PL IN FOOTPATH
WL19	333727.425	6247390.936	16.623	PBLT	PL IN FOOTPATH
WL20	333923.164	6247396.947	19.331	PBLT	PL IN FOOTPATH
WL21	333899.98	6247465.467	20.501	PBLT	PL IN FOOTPATH
WL22	333987.378	6247471.881	27.246	PBLT	PL IN TOP OF KERB
WL23	333965.921	6247536.818	30.997	PBLT	PL IN TOP OF KERB
WL24	333961.765	6247596.007	32.184	PBLT	PL IN FOOTPATH
WL25	333879.535	6247600.948	21.976	PBLT	PL IN FOOTPATH
WL26	333945.248	6247661.288	26.349	PBLT	PL IN FOOTPATH
WL27	334053.682	6247593.86	42.143	PBLT	PL IN PRAM RAMP
WL28	334063.5	6247659.494	32.933	PBLT	FD IN PRAM RAMP
WL29	333880.766	6247295.222	17.841	PBLT	PL IN FOOTPATH
WL30	333894.649	6247198.767	16.111	PBLT	PL IN FOOTPATH
WL31	333967.535	6247188.738	17.362	PBLT	PL IN FOOTPATH
WL32	334075.389	6247171.787	19.783	PBLT	PL IN FOOTPATH
WL33	333931.787	6247159.234	17.085	PBLT	PL IN FOOTPATH
WL34	334131.598	6247462.063	30.207	PBLT	PL IN FOOTPATH



SHEET LAYOUT

EXPLANATORY NOTES:

- THIS MODEL SHOULD BE VIEWED IN A CAD ENVIRONMENT TO INTERPRET THE 3D INFORMATION.
- ANY ELECTRONIC FILE IS PROVIDED WITHOUT WARRANTY AND SHOULD BE USED ONLY IN CONJUNCTION WITH THE SUPPLIED PDF/IMAGE COPY OF THIS PLAN.
- THESE NOTES ARE AN INTEGRAL PART OF THE DIGITAL DATA FILE AND SHOULD BE READ WITH THE DATA FILE AND MUST NOT BE REMOVED FROM THE DATA FILE.
- UNDERGROUND SERVICES HAVE BEEN INVESTIGATED SEE UTILITIES INVESTIGATION DRAWING PR-SU1100 TO PR-SU1117.
- IT REMAINS THE RESPONSIBILITY OF THOSE CONDUCTING PHYSICAL WORKS TO ENSURE AN UP-TO-DATE VERSION OF BEFORE YOU DIG AUSTRALIA PLANS IS CONSULTED AND AVAILABLE ON SITE.
- ALL UTILITIES SHOULD TO BE POTHOLED TO VERIFY LOCATION AND DEPTH.
- THIS SURVEY PLAN REPRESENTS THE LOCATION OF FEATURES THAT WERE ACCESSIBLE AT THE TIME OF SURVEY.
- COPYRIGHT : © RPS AAP CONSULTING PTY LTD INFORMATION CONTAINED IN THIS DRAWING / FILE IS THE COPYRIGHT OF RPS AAP CONSULTING PTY LTD. COPYING OR USING THIS DATA IN WHOLE OR PART, IN ANY FORMAT, WITHOUT PERMISSION INFRINGES COPYRIGHT.
- FOR REASONS OF PLAN PRESENTATION, NOT ALL OF THE INFORMATION CAN BE SHOWN ON THIS PLAN. PLEASE REFER TO ACCOMPANYING DIGITAL DATA FOR ALL SURVEY INFORMATION AND ATTRIBUTES.
- THIS SURVEY IS ON MGA2020 PROJECT COORDINATES
- CONTOURS ARE AN INDICATION OF LANDFORM AND SHOULD NOT BE TAKEN IN PREFERENCE TO SPOT LEVELS SHOWN.
- CONTOUR INTERVAL SHOWN IS 1.0 MAJOR 0.2 MINOR
- ADDITIONAL REDUCED LEVELS HAVE BEEN SET TO NON-PRINTABLE AND AVAILABLE IN THE CAD FILE.
- BUILDING FOOTPRINTS SHOWN ARE AT GROUND LEVEL. FOOTPRINTS MAY DIFFER AT OTHER LEVELS.
- OVERHEAD POWERLINES HAVE NOT BEEN SURVEYED. NO ATTEMPT HAS BEEN MADE TO LOCATE THE POSITION OR REDUCED LEVEL OF INDIVIDUAL CABLES
- THE PROJECT CADASTRAL BOUNDARIES SHOWN ARE SACM LEVEL ACCURACY AND ACCURATE TO 100MM. FORMAL BOUNDARY RE-ESTABLISHMENT HAS NOT BEEN UNDERTAKEN. SURROUNDING BOUNDARIES ARE CADASTRAL DATABASE (DCDB) AND HAVE NOT BEEN VERIFIED BY SURVEY AND ARE FOR CONTEXT PURPOSES ONLY. BOUNDARIES HAVE NOT BEEN PEGGED AS PART OF THIS ENGAGEMENT.

NO.	DATE	REVISION DETAILS	DRAWN	CHK	APP
P2	28.02.2025	ADDITIONAL SURVEY ADDED. SHEET LAYOUT AMENDED	LMB	TC	GE
P1	11.02.2025	INITIAL ISSUE	LMB	TC	GE

HORIZ. SCALE:	1:1500 @ A1	VERT. SCALE:	@ A1
COORDINATES:	MGA 2020	DATUM:	AHD
ORIGIN:	PMS9542	ORIGIN:	PM59542

NOTES

EXPLANATORY NOTES ON OVERALL PLAN PR-SU1200 ARE APPLICABLE TO ALL SHEETS ON THIS PLAN

SEE SHEET 18 PLAN PR-SU1218 FOR TREE SCHEDULE

SEE OVERALL PLAN PR-SU1200 FOR SURVEY CONTROL

- EASEMENTS**
- (A) EASEMENT FOR ROCK ANCHORS 1.9 WIDE
 - (B) EASEMENTS FOR ROCK ANCHORS VARIABLE WIDTH
 - (C) EASEMENTS FOR ROCK ANCHORS 1.25 AND 1.9 WIDE
 - (D) CROSS EASEMENTS
 - (E) EASEMENT FOR OVERHANG 1 FT WIDE
 - (F) RIGHT OF WAY
 - (G) EASEMENT FOR GAS MAIN

CLIENT:	FERRYCARRIG Stockland
SURVEY:	RPS
DRAWN:	LMB
CHECKED:	TC
APPROVED:	GE
DATE OF SURVEY:	NOV 2024
DATE OF PLAN:	11.02.2025
DATE LAST SAVED:	27.02.2025
DATE APPROVED:	11.02.2025

TITLE

EXISTING TOPOGRAPHIC OVERALL PLAN

WATERLOO ESTATE RENEWEL (SOUTH)

DRAWING No PR-SU1200

JOB No	SYD-374169	ISSUE	P2
SCALE	AS SHOWN	DATE	11.02.2025

LEGEND

ELECTRICAL

- CABLE JUNCTION BOX
- CABLE MANHOLE
- DISTRIBUTION FUSE POINT
- GARDEN LIGHT
- POLE - LIGHT
- POLE - POWER & LIGHT
- POWER SERVICE PILLAR
- TRANSFORMER CABINET CENTRE

TRAFFIC CONTROL

- TRAFFIC CONTROL SIGNAL
- TRAFFIC SIGNAL CONTROLLER
- TRAFFIC SIGNAL DETECTOR
- TRAFFIC SIGNAL JUNCTION BOX

COMMUNICATIONS

- TELEPHONE DISTRIBUTION PILLAR
- ABOVE GROUND JOINING POST
- OPTICAL FIBRE JUNCTION BOX
- OPTICAL FIBRE PIT
- STD MAIN PIT
- TELEPHONE BOX POINT
- TELEPHONE POLE
- TELEPHONE SINGLE CONCRETE PIT
- TELEPHONE TRIPLE CONCRETE PIT
- TELEPHONE TWIN CONCRETE PIT

GAS

- MANHOLE COVER
- METER
- PIPELINE MARKER
- PIPELINE MARKER - HIGH PRESSURE
- VALVE BOX
- VENT PIPE
- TEST POINT

WATER

- AIR VALVE
- EARTH TERMINAL
- FIRE HYDRANT
- HYDRANT
- METER
- STOP VALVE
- TAP

SEWER

- MANHOLE COVER
- VENT PIPE
- LAMP HOLE

DRAINAGE / STORMWATER

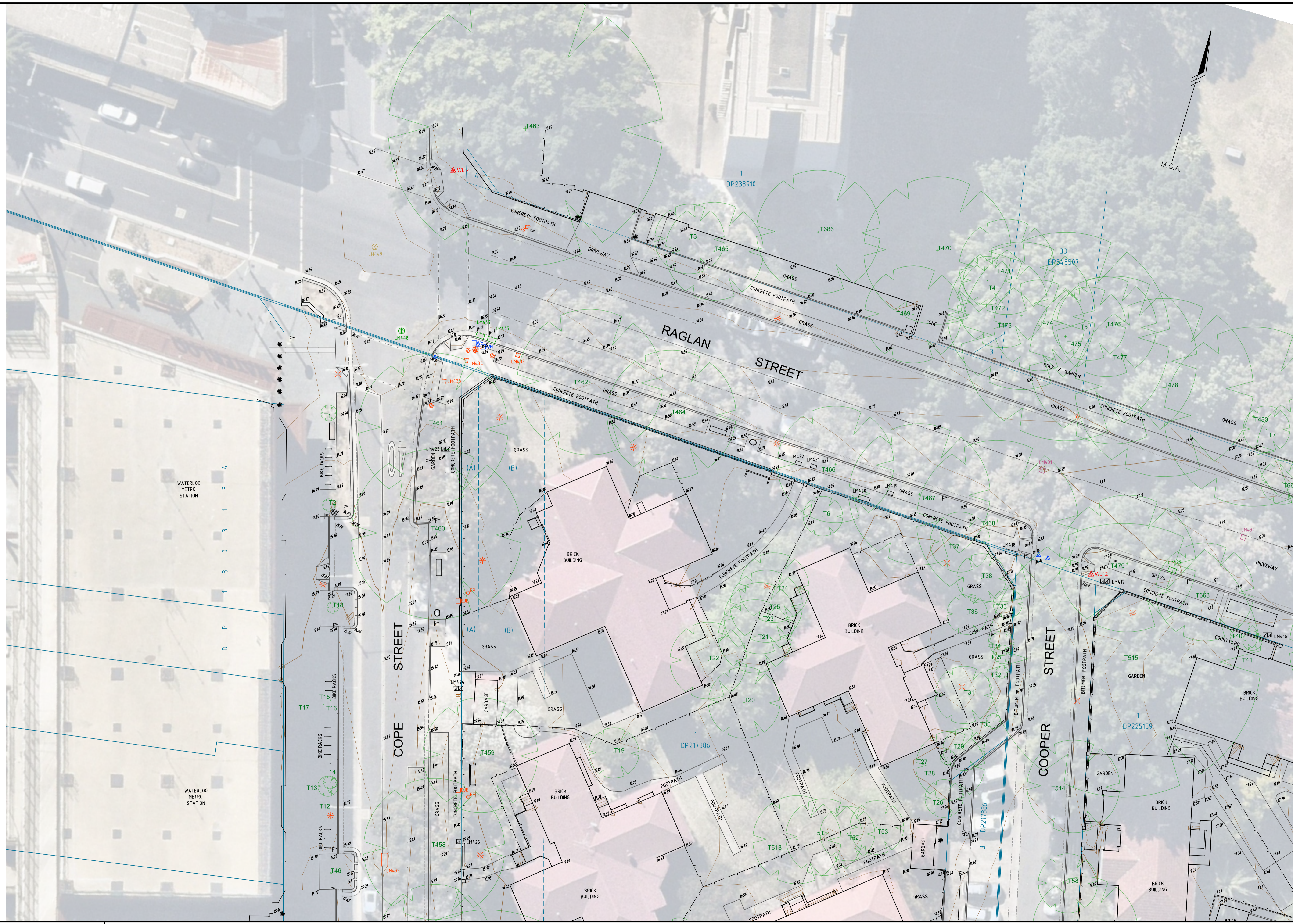
- DRAINAGE JUNCTION MANHOLE
- GULLY PIT POINT
- INLET TO SUMP
- INVERT OF PIPE
- CONCRETE JUNCTION BOX
- SUBSOIL DRAIN FLUSH POINT
- KERB INLET

CULTURAL

- SIGN POST
- LARGE SIGN
- BOLLARD
- FLOOR LEVEL
- CORNER OF BUILDING
- PARKING METER
- AIR-CONDITIONER

MISCELLANEOUS

- GATIC COVER LID
- UNIDENTIFIED POLE
- UNIDENTIFIED SERVICE PIT
- TREE



NO.	DATE	REVISION DETAILS	DRAWN	CHK	APP
P2	28.02.2025	ADDITIONAL SURVEY ADDED. SHEET LAYOUT AMENDED	LMB	TC	GE
P1	11.02.2025	INITIAL ISSUE	LMB	TC	GE
No.	DATE	REVISION DETAILS	DRAWN	CHK	APP

HORIZ. SCALE: 1:200 @ A1
VERT. SCALE: @ A1
COORDINATES: MGA 2020
DATUM: AHD
ORIGIN: PM59542
ORIGIN: PM59542
SCALE IN METRES AT ORIGINAL REDUCTION RATIO

NOTES
 EXPLANATORY NOTES ON OVERALL PLAN PR-SU1200 ARE APPLICABLE TO ALL SHEETS ON THIS PLAN
 SEE SHEET 18 PLAN PR-SU1218 FOR TREE SCHEDULE
 SEE OVERALL PLAN PR-SU1200 FOR SURVEY CONTROL

- EASEMENTS**
- (A) EASEMENT FOR ROCK ANCHORS 1.9 WIDE
 - (B) EASEMENTS FOR ROCK ANCHORS VARIABLE WIDTH
 - (C) EASEMENTS FOR ROCK ANCHORS 1.25 AND 1.9 WIDE
 - (D) CROSS EASEMENTS
 - (E) EASEMENT FOR OVERHANG 1 FT WIDE
 - (F) RIGHT OF WAY
 - (G) EASEMENT FOR GAS MAIN

CLIENT: FERRYGARRIB Stockland
SURVEY: RPS
DRAWN: LMB
CHECKED: TC
APPROVED: GE
DATE OF SURVEY: NOV 2024
DATE OF PLAN: 11.02.2025
DATE LAST SAVED: 27.02.2025
DATE APPROVED: 11.02.2025

TITLE
 EXISTING TOPOGRAPHIC
 PLAN SHEET 1
 WATERLOO ESTATE RENEWAL (SOUTH)
DRAWING No PR-SU1201

JOB No SYD-374169
ISSUE P2

SIZE A1
MAKING COMPLEX EASY

LEGEND

ELECTRICAL

- CABLE JUNCTION BOX
- CABLE MANHOLE
- DISTRIBUTION FUSE POINT
- GARDEN LIGHT
- POLE - LIGHT
- POLE - POWER & LIGHT
- POWER SERVICE PILLAR
- TRANSFORMER CABINET CENTRE

TRAFFIC CONTROL

- TRAFFIC CONTROL SIGNAL
- TRAFFIC SIGNAL CONTROLLER
- TRAFFIC SIGNAL DETECTOR
- TRAFFIC SIGNAL JUNCTION BOX

COMMUNICATIONS

- TELEPHONE DISTRIBUTION PILLAR
- ABOVE GROUND JOINING POST
- OPTICAL FIBRE JUNCTION BOX
- OPTICAL FIBRE PIT
- STD MAIN PIT
- TELEPHONE BOX POINT
- TELEPHONE POLE
- TELEPHONE SINGLE CONCRETE PIT
- TELEPHONE TRIPLE CONCRETE PIT
- TELEPHONE TWIN CONCRETE PIT

GAS

- MANHOLE COVER
- METER
- PIPELINE MARKER
- PIPELINE MARKER - HIGH PRESSURE
- VALVE BOX
- VENT PIPE
- TEST POINT

WATER

- AIR VALVE
- EARTH TERMINAL
- FIRE HYDRANT
- HYDRANT
- METER
- STOP VALVE
- TAP

SEWER

- MANHOLE COVER
- VENT PIPE
- LAMP HOLE

DRAINAGE / STORMWATER

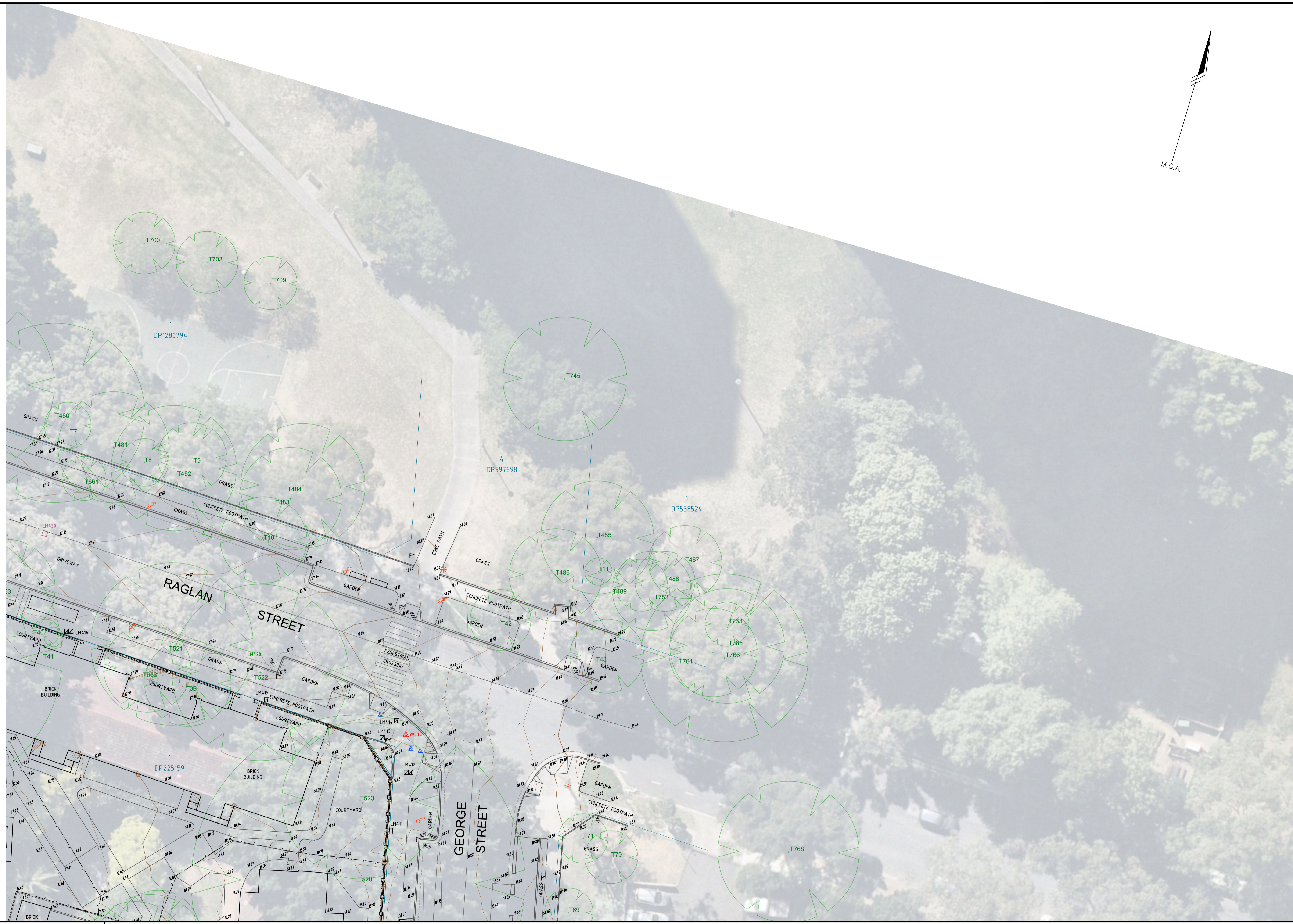
- DRAINAGE JUNCTION MANHOLE
- GULLY PIT POINT
- INLET TO SUMP
- INVERT OF PIPE
- CONCRETE JUNCTION BOX
- SUBSOIL DRAIN FLUSH POINT
- KERB INLET

CULTURAL

- SIGN POST
- LARGE SIGN
- BOLLARD
- FLOOR LEVEL
- CORNER OF BUILDING
- PARKING METER
- AIR-CONDITIONER

MISCELLANEOUS

- GATIC COVER LID
- UNIDENTIFIED POLE
- UNIDENTIFIED SERVICE PIT
- TREE



NO.	DATE	REVISION DETAILS	DRAWN	CHK	APP
P2	28.02.2025	ADDITIONAL SURVEY ADDED. SHEET LAYOUT AMENDED	LMB	TC	GE
P1	11.02.2025	INITIAL ISSUE	LMB	TC	GE

HORIZ. SCALE: 1:200 @ A1	VERT. SCALE: @ A1
COORDINATES: MGA 2020	DATUM: AHD
ORIGIN: PM59542	ORIGIN: PM59542

NOTES

EXPLANATORY NOTES ON OVERALL PLAN PR-SU1200 ARE APPLICABLE TO ALL SHEETS ON THIS PLAN

SEE SHEET 18 PLAN PR-SU1218 FOR TREE SCHEDULE

SEE OVERALL PLAN PR-SU1200 FOR SURVEY CONTROL

- EASEMENTS**
- (A) EASEMENT FOR ROCK ANCHORS 1.9 WIDE
 - (B) EASEMENTS FOR ROCK ANCHORS VARIABLE WIDTH
 - (C) EASEMENTS FOR ROCK ANCHORS 1.25 AND 1.9 WIDE
 - (D) CROSS EASEMENTS
 - (E) EASEMENT FOR OVERHANG 1 FT WIDE
 - (F) RIGHT OF WAY
 - (G) EASEMENT FOR GAS MAIN

CLIENT:	
SURVEY:	RPS
DRAWN:	LMB
CHECKED:	TC
APPROVED:	GE
DATE OF SURVEY:	NOV 2024
DATE OF PLAN:	11.02.2025
DATE LAST SAVED:	27.02.2025
DATE APPROVED:	11.02.2025

TITLE	EXISTING TOPOGRAPHIC PLAN SHEET 2 WATERLOO ESTATE RENEWEL (SOUTH)
JOB No	SYD-374169
ISSUE	P2
CLIENT	
DRAWING No	PR-SU1202

LEGEND

ELECTRICAL

- CABLE JUNCTION BOX
- CABLE MANHOLE
- DISTRIBUTION FUSE POINT
- GARDEN LIGHT
- POLE - LIGHT
- POLE - POWER & LIGHT
- POWER SERVICE PILLAR
- TRANSFORMER CABINET CENTRE

TRAFFIC CONTROL

- TRAFFIC CONTROL SIGNAL
- TRAFFIC SIGNAL CONTROLLER
- TRAFFIC SIGNAL DETECTOR
- TRAFFIC SIGNAL JUNCTION BOX

COMMUNICATIONS

- TELEPHONE DISTRIBUTION PILLAR
- ABOVE GROUND JOINING POST
- OPTICAL FIBRE JUNCTION BOX
- OPTICAL FIBRE PIT
- STD MAIN PIT
- TELEPHONE BOX POINT
- TELEPHONE POLE
- TELEPHONE SINGLE CONCRETE PIT
- TELEPHONE TRIPLE CONCRETE PIT
- TELEPHONE TWIN CONCRETE PIT

GAS

- MANHOLE COVER
- METER
- PIPELINE MARKER
- PIPELINE MARKER - HIGH PRESSURE
- VALVE BOX
- VENT PIPE
- TEST POINT

WATER

- AIR VALVE
- EARTH TERMINAL
- FIRE HYDRANT
- HYDRANT
- METER
- STOP VALVE
- TAP

SEWER

- MANHOLE COVER
- VENT PIPE
- LAMP HOLE

DRAINAGE / STORMWATER

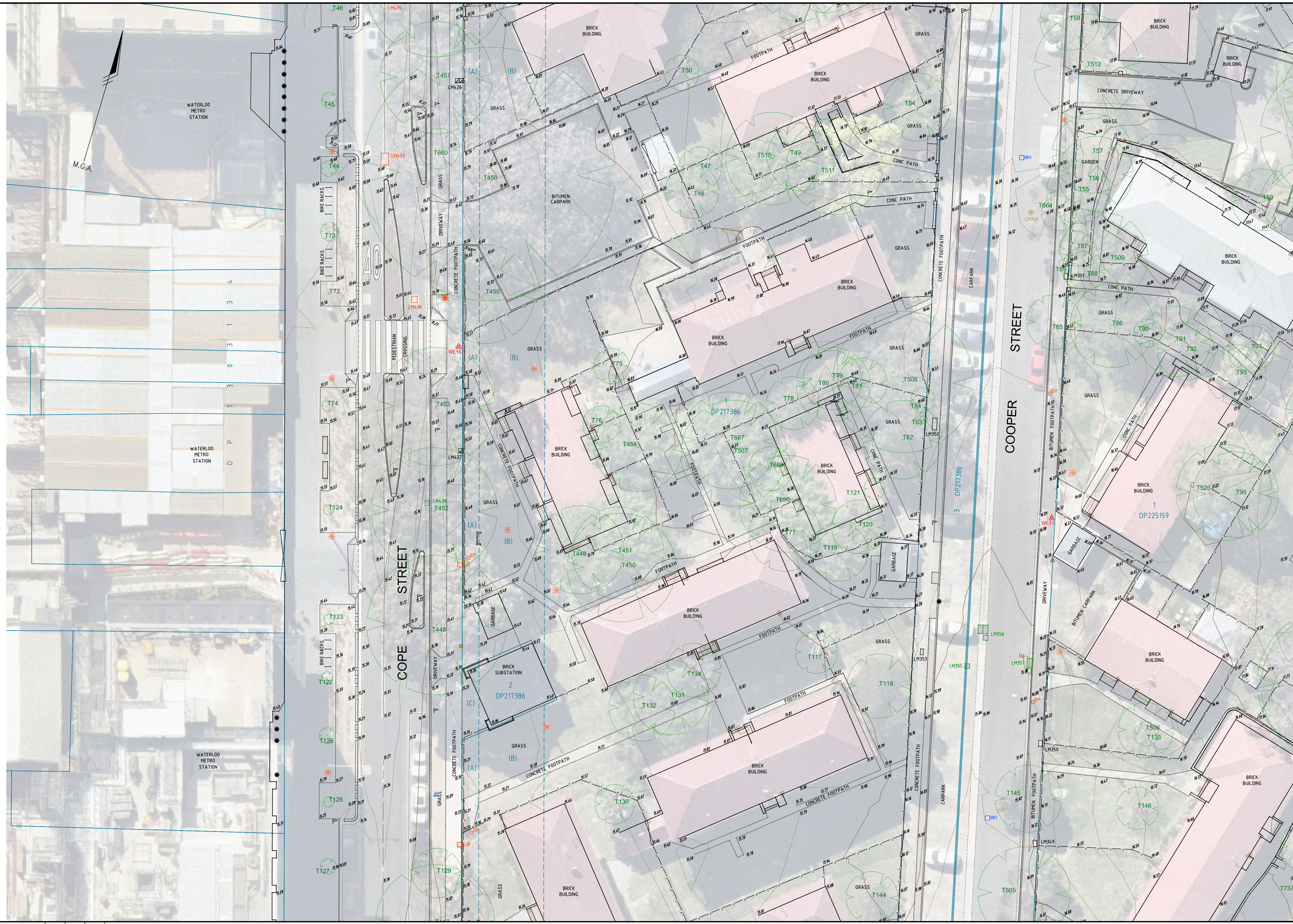
- DRAINAGE JUNCTION MANHOLE
- GULLY PIT POINT
- INLET TO SUMP
- INVERT OF PIPE
- CONCRETE JUNCTION BOX
- SUBSOIL DRAIN FLUSH POINT
- KERB INLET

CULTURAL

- SIGN POST
- LARGE SIGN
- BOLLARD
- FLOOR LEVEL
- CORNER OF BUILDING
- PARKING METER
- AIR-CONDITIONER

MISCELLANEOUS

- GATIC COVER LID
- UNIDENTIFIED POLE
- UNIDENTIFIED SERVICE PIT
- TREE



LEGEND

ELECTRICAL

- CABLE JUNCTION BOX
- CABLE MANHOLE
- DISTRIBUTION FUSE POINT
- GARDEN LIGHT
- POLE - LIGHT
- POLE - POWER & LIGHT
- POWER SERVICE PILLAR
- TRANSFORMER CABINET CENTRE

TRAFFIC CONTROL

- TRAFFIC CONTROL SIGNAL
- TRAFFIC SIGNAL CONTROLLER
- TRAFFIC SIGNAL DETECTOR
- TRAFFIC SIGNAL JUNCTION BOX

COMMUNICATIONS

- TELEPHONE DISTRIBUTION PILLAR
- ABOVE GROUND JOINING POST
- OPTICAL FIBRE JUNCTION BOX
- OPTICAL FIBRE PIT
- STD MAIN PIT
- TELEPHONE BOX POINT
- TELEPHONE POLE
- TELEPHONE SINGLE CONCRETE PIT
- TELEPHONE TRIPLE CONCRETE PIT
- TELEPHONE TWIN CONCRETE PIT

GAS

- MANHOLE COVER
- METER
- PIPELINE MARKER
- PIPELINE MARKER - HIGH PRESSURE
- VALVE BOX
- VENT PIPE
- TEST POINT

WATER

- AIR VALVE
- EARTH TERMINAL
- FIRE HYDRANT
- HYDRANT
- METER
- STOP VALVE
- TAP

SEWER

- MANHOLE COVER
- VENT PIPE
- LAMP HOLE

DRAINAGE / STORMWATER

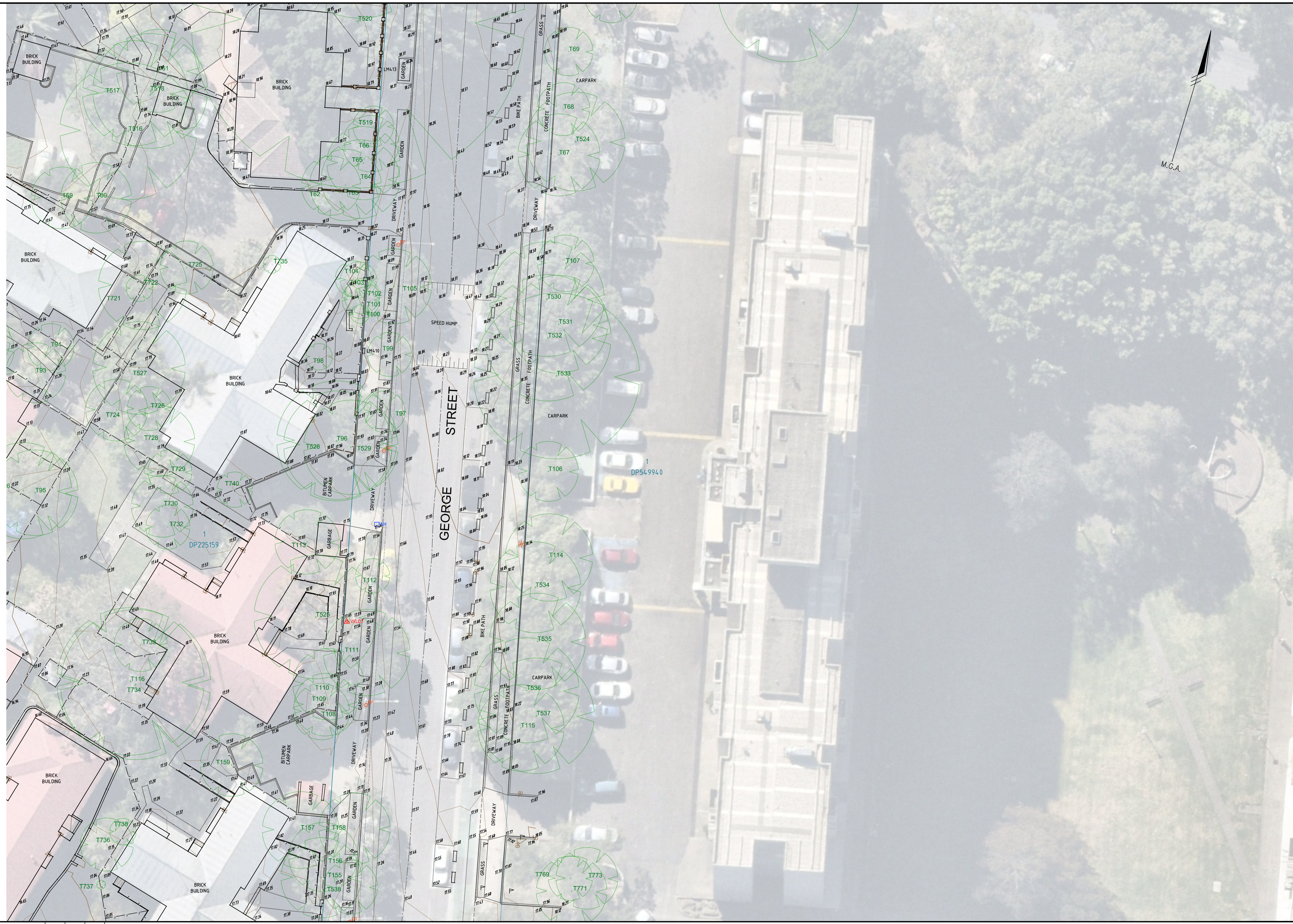
- DRAINAGE JUNCTION MANHOLE
- GULLY PIT POINT
- INLET TO SUMP
- INVERT OF PIPE
- CONCRETE JUNCTION BOX
- SUBSOIL DRAIN FLUSH POINT
- KERB INLET

CULTURAL

- SIGN POST
- LARGE SIGN
- BOLLARD
- FLOOR LEVEL
- CORNER OF BUILDING
- PARKING METER
- AIR-CONDITIONER

MISCELLANEOUS

- GATIC COVER LID
- UNIDENTIFIED POLE
- UNIDENTIFIED SERVICE PIT
- TREE



NO.	DATE	REVISION DETAILS	DRAWN	CHK	APP.
P2	28.02.2025	ADDITIONAL SURVEY ADDED. SHEET LAYOUT AMENDED	LMB	TC	GE
P1	11.02.2025	INITIAL ISSUE	LMB	TC	GE
No.	DATE	REVISION DETAILS	DRAWN	CHK	APP.

HORIZ. SCALE: 1:200 @ A1	VERT. SCALE: @ A1
COORDINATES: MGA 2020	DATUM: AHD
ORIGIN: PM59542	ORIGIN: PM59542

NOTES

EXPLANATORY NOTES ON OVERALL PLAN PR-SU1200 ARE APPLICABLE TO ALL SHEETS ON THIS PLAN

SEE SHEET 18 PLAN PR-SU1218 FOR TREE SCHEDULE

SEE OVERALL PLAN PR-SU1200 FOR SURVEY CONTROL

- EASEMENTS**
- (A) EASEMENT FOR ROCK ANCHORS 1.9 WIDE
 - (B) EASEMENTS FOR ROCK ANCHORS VARIABLE WIDTH
 - (C) EASEMENTS FOR ROCK ANCHORS 1.25 AND 1.9 WIDE
 - (D) CROSS EASEMENTS
 - (E) EASEMENT FOR OVERHANG 1 FT WIDE
 - (F) RIGHT OF WAY
 - (G) EASEMENT FOR GAS MAIN

CLIENT:	FERRYGARRIB	Stockland
SURVEY:	RPS	DATE OF SURVEY: NOV 2024
DRAWN:	LMB	DATE OF PLAN: 11.02.2025
CHECKED:	TC	DATE LAST SAVED: 27.02.2025
APPROVED:	GE	DATE APPROVED: 11.02.2025

TITLE

EXISTING TOPOGRAPHIC
PLAN SHEET 4
WATERLOO ESTATE RENEWAL (SOUTH)

DRAWING No PR-SU1204

JOB No	SYD-374169	ISSUE	P2
SCALE	A1	DATE	11.02.2025

LEGEND

ELECTRICAL

- CABLE JUNCTION BOX
- CABLE MANHOLE
- DISTRIBUTION FUSE POINT
- GARDEN LIGHT
- POLE - LIGHT
- POLE - POWER & LIGHT
- POWER SERVICE PILLAR
- TRANSFORMER CABINET CENTRE

TRAFFIC CONTROL

- TRAFFIC CONTROL SIGNAL
- TRAFFIC SIGNAL CONTROLLER
- TRAFFIC SIGNAL DETECTOR
- TRAFFIC SIGNAL JUNCTION BOX

COMMUNICATIONS

- TELEPHONE DISTRIBUTION PILLAR
- ABOVE GROUND JOINING POST
- OPTICAL FIBRE JUNCTION BOX
- OPTICAL FIBRE PIT
- STD MAIN PIT
- TELEPHONE BOX POINT
- TELEPHONE POLE
- TELEPHONE SINGLE CONCRETE PIT
- TELEPHONE TRIPLE CONCRETE PIT
- TELEPHONE TWIN CONCRETE PIT

GAS

- MANHOLE COVER
- METER
- PIPELINE MARKER
- PIPELINE MARKER - HIGH PRESSURE
- VALVE BOX
- VENT PIPE
- TEST POINT

WATER

- AIR VALVE
- EARTH TERMINAL
- FIRE HYDRANT
- HYDRANT
- METER
- STOP VALVE
- TAP

SEWER

- MANHOLE COVER
- VENT PIPE
- LAMP HOLE

DRAINAGE / STORMWATER

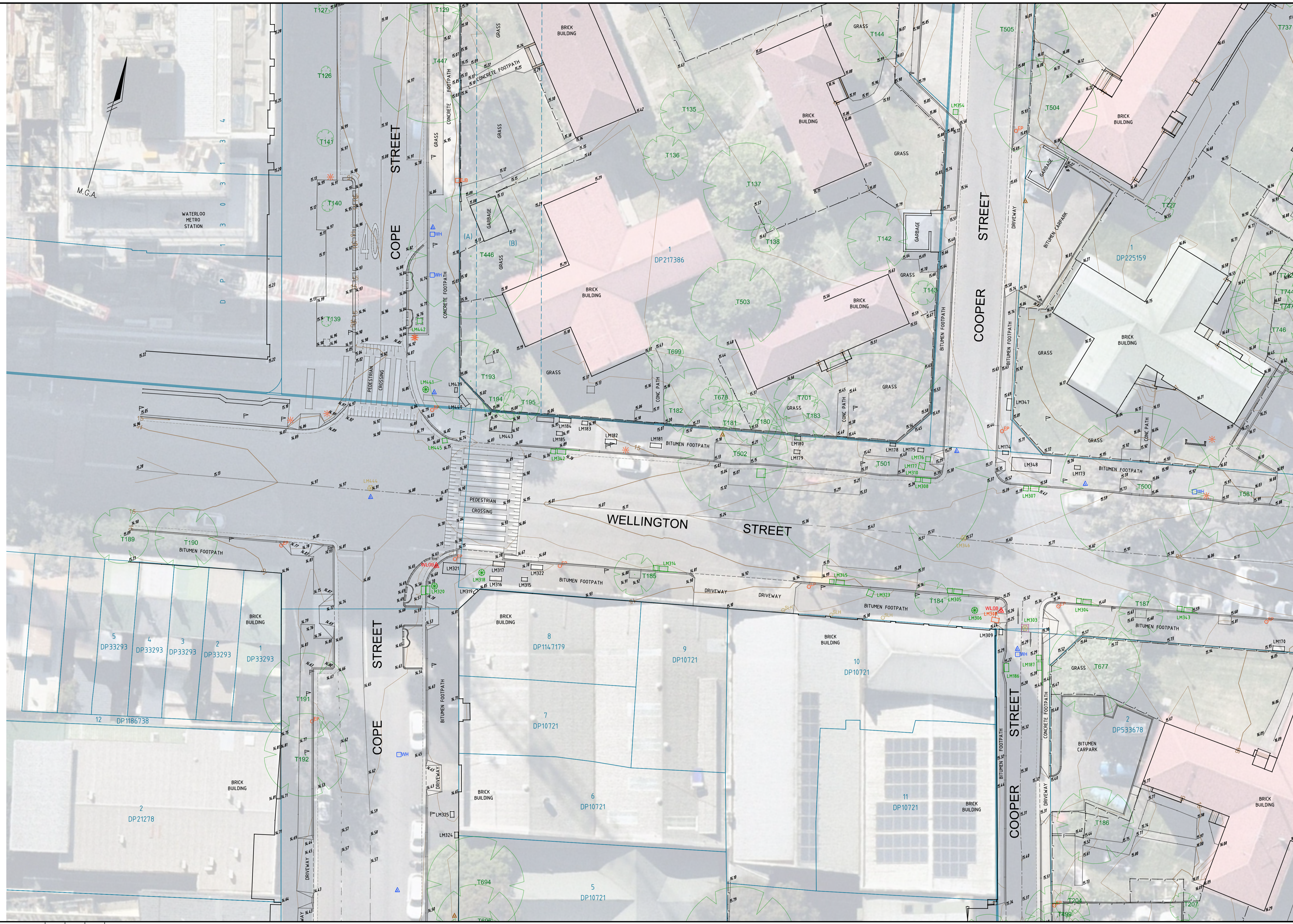
- DRAINAGE JUNCTION MANHOLE
- GULLY PIT POINT
- INLET TO SUMP
- INVERT OF PIPE
- CONCRETE JUNCTION BOX
- SUBSOIL DRAIN FLUSH POINT
- KERB INLET

CULTURAL

- SIGN POST
- LARGE SIGN
- BOLLARD
- FLOOR LEVEL
- CORNER OF BUILDING
- PARKING METER
- AIR-CONDITIONER

MISCELLANEOUS

- GATIC COVER LID
- UNIDENTIFIED POLE
- UNIDENTIFIED SERVICE PIT
- TREE



LEGEND

ELECTRICAL

- CABLE JUNCTION BOX
- CABLE MANHOLE
- DISTRIBUTION FUSE POINT
- GARDEN LIGHT
- POLE - LIGHT
- POLE - POWER & LIGHT
- POWER SERVICE PILLAR
- TRANSFORMER CABINET CENTRE

TRAFFIC CONTROL

- TRAFFIC CONTROL SIGNAL
- TRAFFIC SIGNAL CONTROLLER
- TRAFFIC SIGNAL DETECTOR
- TRAFFIC SIGNAL JUNCTION BOX

COMMUNICATIONS

- TELEPHONE DISTRIBUTION PILLAR
- ABOVE GROUND JOINING POST
- OPTICAL FIBRE JUNCTION BOX
- OPTICAL FIBRE PIT
- STD MAIN PIT
- TELEPHONE BOX POINT
- TELEPHONE POLE
- TELEPHONE SINGLE CONCRETE PIT
- TELEPHONE TRIPLE CONCRETE PIT
- TELEPHONE TWIN CONCRETE PIT

GAS

- MANHOLE COVER
- METER
- PIPELINE MARKER
- PIPELINE MARKER - HIGH PRESSURE
- VALVE BOX
- VENT PIPE
- TEST POINT

WATER

- AIR VALVE
- EARTH TERMINAL
- FIRE HYDRANT
- HYDRANT
- METER
- STOP VALVE
- TAP

SEWER

- MANHOLE COVER
- VENT PIPE
- LAMP HOLE

DRAINAGE / STORMWATER

- DRAINAGE JUNCTION MANHOLE
- GULLY PIT POINT
- INLET TO SUMP
- INVERT OF PIPE
- CONCRETE JUNCTION BOX
- SUBSOIL DRAIN FLUSH POINT
- KERB INLET

CULTURAL

- SIGN POST
- LARGE SIGN
- BOLLARD
- FLOOR LEVEL
- CORNER OF BUILDING
- PARKING METER
- AIR-CONDITIONER

MISCELLANEOUS

- GATIC COVER LID
- UNIDENTIFIED POLE
- UNIDENTIFIED SERVICE PIT
- TREE



NO.	DATE	REVISION DETAILS	DRAWN	CHK	APP
P2	28.02.2025	ADDITIONAL SURVEY ADDED. SHEET LAYOUT AMENDED	LMB	TC	GE
P1	11.02.2025	INITIAL ISSUE	LMB	TC	GE
No.	DATE	REVISION DETAILS	DRAWN	CHK	APP

HORIZ. SCALE: 1:200 @ A1
VERT. SCALE: @ A1
COORDINATES: MGA 2020
DATUM: AHD
ORIGIN: PM59542
ORIGIN: PM59542
SCALE IN METRES AT ORIGINAL REDUCTION RATIO

NOTES
 EXPLANATORY NOTES ON OVERALL PLAN PR-SU1200 ARE APPLICABLE TO ALL SHEETS ON THIS PLAN
 SEE SHEET 18 PLAN PR-SU1218 FOR TREE SCHEDULE
 SEE OVERALL PLAN PR-SU1200 FOR SURVEY CONTROL

- EASEMENTS**
- (A) EASEMENT FOR ROCK ANCHORS 1.9 WIDE
 - (B) EASEMENTS FOR ROCK ANCHORS VARIABLE WIDTH
 - (C) EASEMENTS FOR ROCK ANCHORS 1.25 AND 1.9 WIDE
 - (D) CROSS EASEMENTS
 - (E) EASEMENT FOR OVERHANG 1 FT WIDE
 - (F) RIGHT OF WAY
 - (G) EASEMENT FOR GAS MAIN

CLIENT: FERRYCARRIG Stockland
SURVEY: RPS
DRAWN: LMB
CHECKED: TC
APPROVED: GE
DATE OF SURVEY: NOV 2024
DATE OF PLAN: 11.02.2025
DATE LAST SAVED: 27.02.2025
DATE APPROVED: 11.02.2025

TITLE
 EXISTING TOPOGRAPHIC
 PLAN SHEET 6
 WATERLOO ESTATE RENEWAL (SOUTH)
DRAWING No PR-SU1206

JOB No SYD-374169
ISSUE P2
SIZE A1
DATE 11.02.2025
SCALE 1:200 @ A1

LEGEND

ELECTRICAL

- CABLE JUNCTION BOX
- CABLE MANHOLE
- DISTRIBUTION FUSE POINT
- GARDEN LIGHT
- POLE - LIGHT
- POLE - POWER & LIGHT
- POWER SERVICE PILLAR
- TRANSFORMER CABINET CENTRE

TRAFFIC CONTROL

- TRAFFIC CONTROL SIGNAL
- TRAFFIC SIGNAL CONTROLLER
- TRAFFIC SIGNAL DETECTOR
- TRAFFIC SIGNAL JUNCTION BOX

COMMUNICATIONS

- TELEPHONE DISTRIBUTION PILLAR
- ABOVE GROUND JOINING POST
- OPTICAL FIBRE JUNCTION BOX
- OPTICAL FIBRE PIT
- STD MAIN PIT
- TELEPHONE BOX POINT
- TELEPHONE POLE
- TELEPHONE SINGLE CONCRETE PIT
- TELEPHONE TRIPLE CONCRETE PIT
- TELEPHONE TWIN CONCRETE PIT

GAS

- MANHOLE COVER
- METER
- PIPELINE MARKER
- PIPELINE MARKER - HIGH PRESSURE
- VALVE BOX
- VENT PIPE
- TEST POINT

WATER

- AIR VALVE
- EARTH TERMINAL
- FIRE HYDRANT
- HYDRANT
- METER
- STOP VALVE
- TAP

SEWER

- MANHOLE COVER
- VENT PIPE
- LAMP HOLE

DRAINAGE / STORMWATER

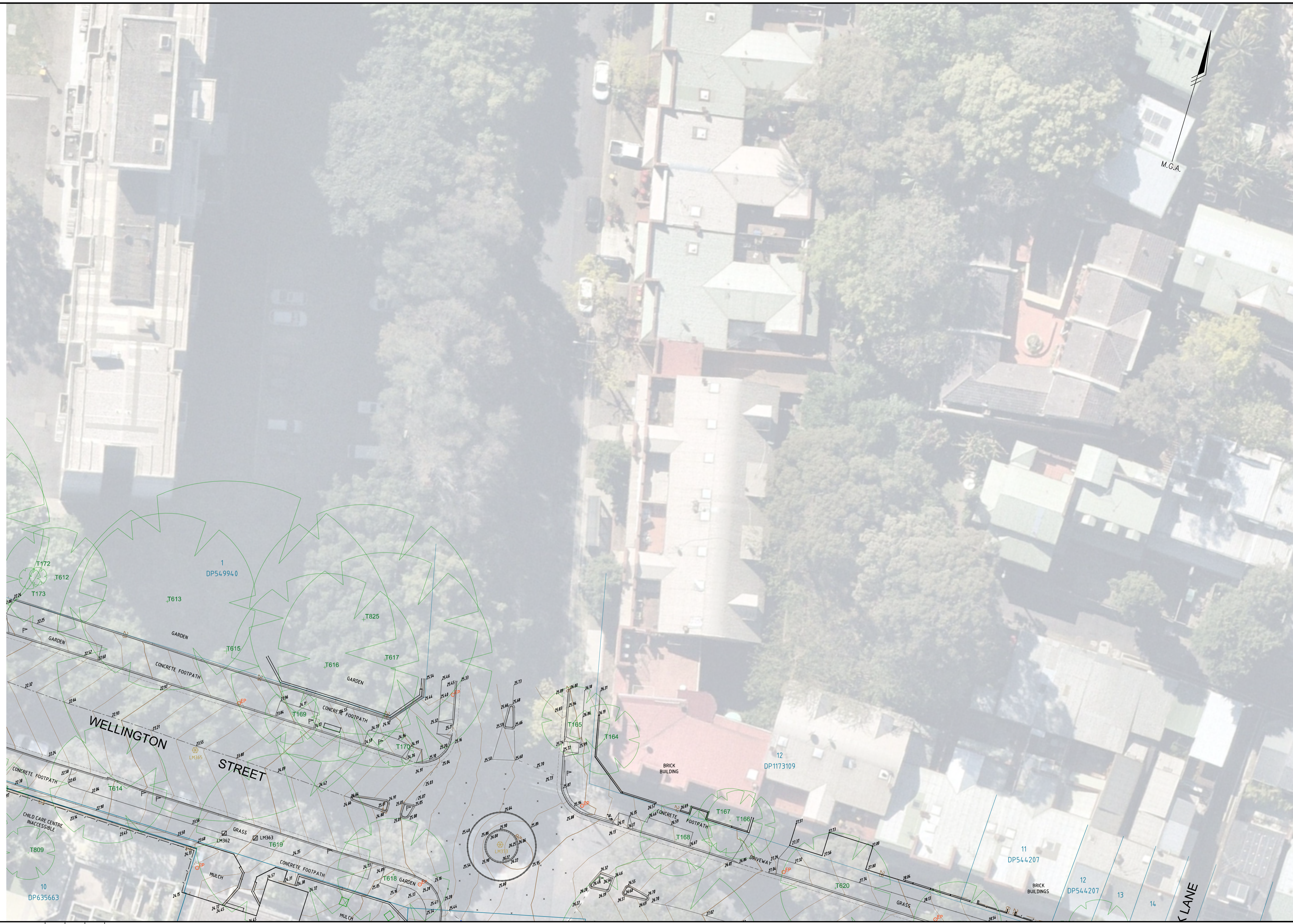
- DRAINAGE JUNCTION MANHOLE
- GULLY PIT POINT
- INLET TO SUMP
- INVERT OF PIPE
- CONCRETE JUNCTION BOX
- SUBSOIL DRAIN FLUSH POINT
- KERB INLET

CULTURAL

- SIGN POST
- LARGE SIGN
- BOLLARD
- FLOOR LEVEL
- CORNER OF BUILDING
- PARKING METER
- AIR-CONDITIONER

MISCELLANEOUS

- GATIC COVER LID
- UNIDENTIFIED POLE
- UNIDENTIFIED SERVICE PIT
- TREE



NO.	DATE	REVISION DETAILS	DRAWN	CHK	APP.
P2	28.02.2025	ADDITIONAL SURVEY ADDED. SHEET LAYOUT AMENDED	LMB	TC	GE
P1	11.02.2025	INITIAL ISSUE	LMB	TC	GE
No.	DATE	REVISION DETAILS	DRAWN	CHK	APP.

HORIZ. SCALE:	1:200	@ A1	VERT. SCALE:	@ A1
COORDINATES:	MGA 2020	DATUM:	AHD	
ORIGIN:	PM59542	ORIGIN:	PM59542	

NOTES

EXPLANATORY NOTES ON OVERALL PLAN PR-SU1200 ARE APPLICABLE TO ALL SHEETS ON THIS PLAN

SEE SHEET 18 PLAN PR-SU1218 FOR TREE SCHEDULE

SEE OVERALL PLAN PR-SU1200 FOR SURVEY CONTROL

- EASEMENTS**
- (A) EASEMENT FOR ROCK ANCHORS 1.9 WIDE
 - (B) EASEMENTS FOR ROCK ANCHORS VARIABLE WIDTH
 - (C) EASEMENTS FOR ROCK ANCHORS 1.25 AND 1.9 WIDE
 - (D) CROSS EASEMENTS
 - (E) EASEMENT FOR OVERHANG 1 FT WIDE
 - (F) RIGHT OF WAY
 - (G) EASEMENT FOR GAS MAIN

CLIENT:	FERRYGARRIB	Stockland
SURVEY:	RPS	DATE OF SURVEY: NOV 2024
DRAWN:	LMB	DATE OF PLAN: 11.02.2025
CHECKED:	TC	DATE LAST SAVED: 27.02.2025
APPROVED:	GE	DATE APPROVED: 11.02.2025

TITLE

EXISTING TOPOGRAPHIC
PLAN SHEET 7
WATERLOO ESTATE RENEWEL (SOUTH)

DRAWING No PR-SU1207

JOB No	SYD-374169	ISSUE	P2
SCALE	AS SHOWN	SIZE	A1

LEGEND

ELECTRICAL

- CABLE JUNCTION BOX
- CABLE MANHOLE
- DISTRIBUTION FUSE POINT
- GARDEN LIGHT
- POLE - LIGHT
- POLE - POWER & LIGHT
- POWER SERVICE PILLAR
- TRANSFORMER CABINET CENTRE

TRAFFIC CONTROL

- TRAFFIC CONTROL SIGNAL
- TRAFFIC SIGNAL CONTROLLER
- TRAFFIC SIGNAL DETECTOR
- TRAFFIC SIGNAL JUNCTION BOX

COMMUNICATIONS

- TELEPHONE DISTRIBUTION PILLAR
- ABOVE GROUND JOINING POST
- OPTICAL FIBRE JUNCTION BOX
- OPTICAL FIBRE PIT
- STD MAIN PIT
- TELEPHONE BOX POINT
- TELEPHONE POLE
- TELEPHONE SINGLE CONCRETE PIT
- TELEPHONE TRIPLE CONCRETE PIT
- TELEPHONE TWIN CONCRETE PIT

GAS

- MANHOLE COVER
- METER
- PIPELINE MARKER
- PIPELINE MARKER - HIGH PRESSURE
- VALVE BOX
- VENT PIPE
- TEST POINT

WATER

- AIR VALVE
- EARTH TERMINAL
- FIRE HYDRANT
- HYDRANT
- METER
- STOP VALVE
- TAP

SEWER

- MANHOLE COVER
- VENT PIPE
- LAMP HOLE

DRAINAGE / STORMWATER

- DRAINAGE JUNCTION MANHOLE
- GULLY PIT POINT
- INLET TO SUMP
- INVERT OF PIPE
- CONCRETE JUNCTION BOX
- SUBSOIL DRAIN FLUSH POINT
- KERB INLET

CULTURAL

- SIGN POST
- LARGE SIGN
- BOLLARD
- FLOOR LEVEL
- CORNER OF BUILDING
- PARKING METER
- AIR-CONDITIONER

MISCELLANEOUS

- GATIC COVER LID
- UNIDENTIFIED POLE
- UNIDENTIFIED SERVICE PIT
- TREE



REVISIONS	DATE	REVISION DETAILS	DRAWN	CHK	APP
P2	28.02.2025	ADDITIONAL SURVEY ADDED. SHEET LAYOUT AMENDED	LMB	TC	GE
P1	11.02.2025	INITIAL ISSUE	LMB	TC	GE
No.	DATE	REVISION DETAILS	DRAWN	CHK	APP

HORIZ. SCALE:	1:200 @ A1	VERT. SCALE:	@ A1
COORDINATES:	MGA 2020	DATUM:	AHD
ORIGIN:	PM59542	ORIGIN:	PM59542

NOTES

EXPLANATORY NOTES ON OVERALL PLAN PR-SU1200 ARE APPLICABLE TO ALL SHEETS ON THIS PLAN

SEE SHEET 18 PLAN PR-SU1218 FOR TREE SCHEDULE

SEE OVERALL PLAN PR-SU1200 FOR SURVEY CONTROL

- EASEMENTS**
- (A) EASEMENT FOR ROCK ANCHORS 1.9 WIDE
 - (B) EASEMENTS FOR ROCK ANCHORS VARIABLE WIDTH
 - (C) EASEMENTS FOR ROCK ANCHORS 1.25 AND 1.9 WIDE
 - (D) CROSS EASEMENTS
 - (E) EASEMENT FOR OVERHANG 1 FT WIDE
 - (F) RIGHT OF WAY
 - (G) EASEMENT FOR GAS MAIN

CLIENT:			
SURVEY:	RPS	DATE OF SURVEY:	NOV 2024
DRAWN:	LMB	DATE OF PLAN:	11.02.2025
CHECKED:	TC	DATE LAST SAVED:	27.02.2025
APPROVED:	GE	DATE APPROVED:	11.02.2025

TITLE

EXISTING TOPOGRAPHIC
PLAN SHEET 8
WATERLOO ESTATE RENEWAL (SOUTH)

JOB No SYD-374169

ISSUE P2

DRAWING No PR-SU1208

SIZE A1

REPRODUCTION IN COLOUR ONLY.

LEGEND

ELECTRICAL

- CABLE JUNCTION BOX
- CABLE MANHOLE
- DISTRIBUTION FUSE POINT
- GARDEN LIGHT
- POLE - LIGHT
- POLE - POWER & LIGHT
- POWER SERVICE PILLAR
- TRANSFORMER CABINET CENTRE

TRAFFIC CONTROL

- TRAFFIC CONTROL SIGNAL
- TRAFFIC SIGNAL CONTROLLER
- TRAFFIC SIGNAL DETECTOR
- TRAFFIC SIGNAL JUNCTION BOX

COMMUNICATIONS

- TELEPHONE DISTRIBUTION PILLAR
- ABOVE GROUND JOINING POST
- OPTICAL FIBRE JUNCTION BOX
- OPTICAL FIBRE PIT
- STD MAIN PIT
- TELEPHONE BOX POINT
- TELEPHONE POLE
- TELEPHONE SINGLE CONCRETE PIT
- TELEPHONE TRIPLE CONCRETE PIT
- TELEPHONE TWIN CONCRETE PIT

GAS

- MANHOLE COVER
- METER
- PIPELINE MARKER
- PIPE MARKER - HIGH PRESSURE
- VALVE BOX
- VENT PIPE
- TEST POINT

WATER

- AIR VALVE
- EARTH TERMINAL
- FIRE HYDRANT
- HYDRANT
- METER
- STOP VALVE
- TAP

SEWER

- MANHOLE COVER
- VENT PIPE
- LAMP HOLE

DRAINAGE / STORMWATER

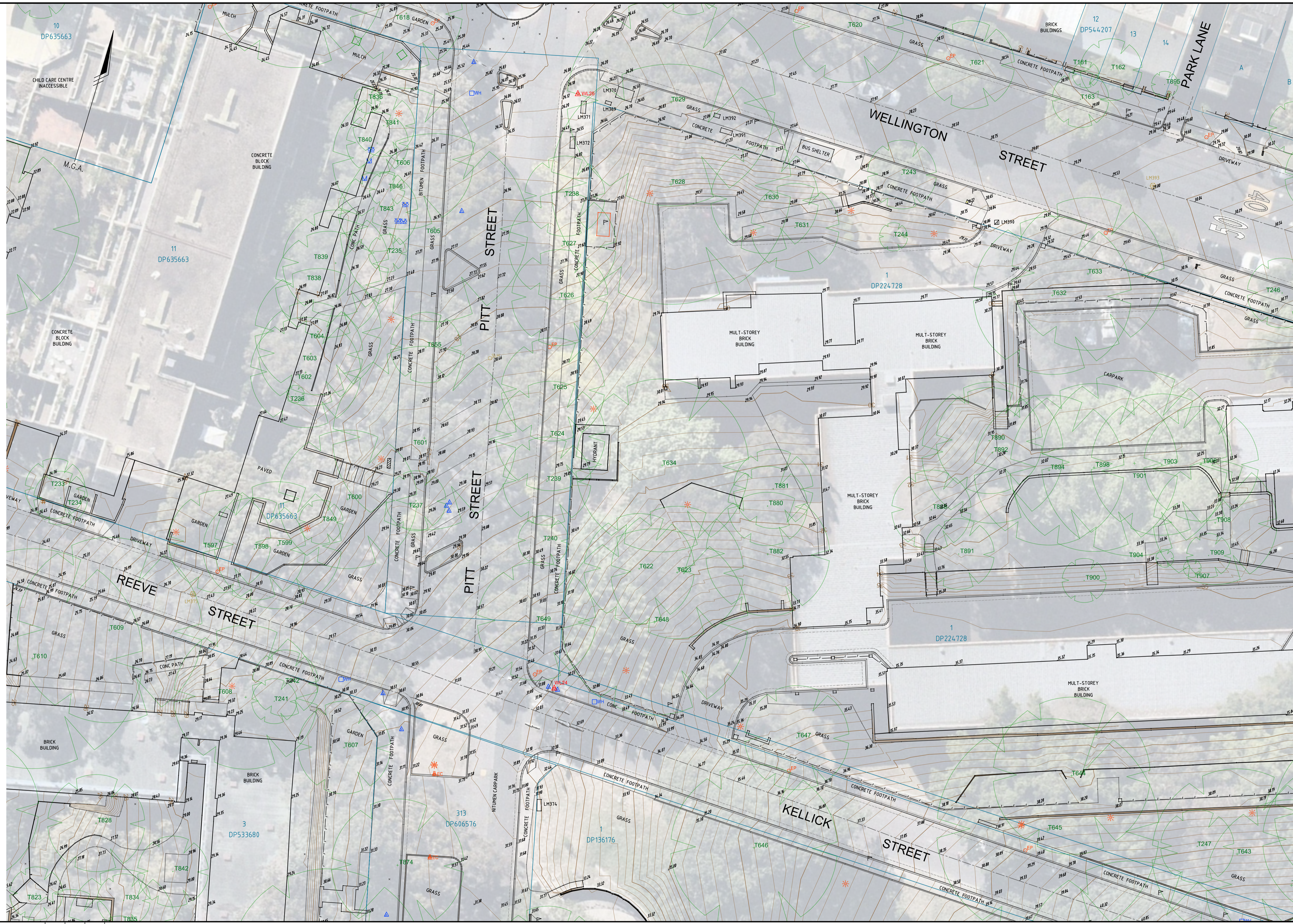
- DRAINAGE JUNCTION MANHOLE
- GULLY PIT POINT
- INLET TO SUMP
- INVERT OF PIPE
- CONCRETE JUNCTION BOX
- SUBSOIL DRAIN FLUSH POINT
- KERB INLET

CULTURAL

- SIGN POST
- LARGE SIGN
- BOLLARD
- FLOOR LEVEL
- CORNER OF BUILDING
- PARKING METER
- AIR-CONDITIONER

MISCELLANEOUS

- GATIC COVER LID
- UNIDENTIFIED POLE
- UNIDENTIFIED SERVICE PIT
- TREE



<p>REVISIONS</p> <table border="1" style="width: 100%; border-collapse: collapse;"> <thead> <tr> <th>No.</th> <th>DATE</th> <th>REVISION DETAILS</th> <th>DRAWN</th> <th>CHK</th> <th>APP</th> </tr> </thead> <tbody> <tr> <td>P2</td> <td>28.02.2025</td> <td>ADDITIONAL SURVEY ADDED. SHEET LAYOUT AMENDED</td> <td>LMB</td> <td>TC</td> <td>GE</td> </tr> <tr> <td>P1</td> <td>11.02.2025</td> <td>INITIAL ISSUE</td> <td>LMB</td> <td>TC</td> <td>GE</td> </tr> </tbody> </table>	No.	DATE	REVISION DETAILS	DRAWN	CHK	APP	P2	28.02.2025	ADDITIONAL SURVEY ADDED. SHEET LAYOUT AMENDED	LMB	TC	GE	P1	11.02.2025	INITIAL ISSUE	LMB	TC	GE	<p>HORIZ. SCALE: 1:200 @ A1</p> <p>VERT. SCALE: @ A1</p> <p>COORDINATES: MGA 2020</p> <p>DATUM: AHD</p> <p>ORIGIN: PM59542</p> <p>ORIGIN: PM59542</p>	<p>NOTES</p> <p>EXPLANATORY NOTES ON OVERALL PLAN PR-SU1200 ARE APPLICABLE TO ALL SHEETS ON THIS PLAN</p> <p>SEE SHEET 18 PLAN PR-SU1218 FOR TREE SCHEDULE</p> <p>SEE OVERALL PLAN PR-SU1200 FOR SURVEY CONTROL</p>	<p>EASEMENTS</p> <p>(A) EASEMENT FOR ROCK ANCHORS 1.9 WIDE</p> <p>(B) EASEMENTS FOR ROCK ANCHORS VARIABLE WIDTH</p> <p>(C) EASEMENTS FOR ROCK ANCHORS 1.25 AND 1.9 WIDE</p> <p>(D) CROSS EASEMENTS</p> <p>(E) EASEMENT FOR OVERHANG 1 FT WIDE</p> <p>(F) RIGHT OF WAY</p> <p>(G) EASEMENT FOR GAS MAIN</p>	<p>CLIENT:</p> <p>FERRYCARRIG Stockland</p> <p>SURVEY: RPS</p> <p>DRAWN: LMB</p> <p>CHECKED: TC</p> <p>APPROVED: GE</p> <p>DATE OF SURVEY: NOV 2024</p> <p>DATE OF PLAN: 11.02.2025</p> <p>DATE LAST SAVED: 27.02.2025</p> <p>DATE APPROVED: 11.02.2025</p>	<p>TITLE</p> <p>EXISTING TOPOGRAPHIC PLAN SHEET 10</p> <p>WATERLOO ESTATE RENEWEL (SOUTH)</p> <p>PR-SU1210</p>	<p>JOB No</p> <p>SYD-374169</p> <p>ISSUE</p> <p>P2</p>
No.	DATE	REVISION DETAILS	DRAWN	CHK	APP																			
P2	28.02.2025	ADDITIONAL SURVEY ADDED. SHEET LAYOUT AMENDED	LMB	TC	GE																			
P1	11.02.2025	INITIAL ISSUE	LMB	TC	GE																			

LEGEND

ELECTRICAL

- CABLE JUNCTION BOX
- CABLE MANHOLE
- DISTRIBUTION FUSE POINT
- GARDEN LIGHT
- POLE - LIGHT
- POLE - POWER & LIGHT
- POWER SERVICE PILLAR
- TRANSFORMER CABINET CENTRE

TRAFFIC CONTROL

- TRAFFIC CONTROL SIGNAL
- TRAFFIC SIGNAL CONTROLLER
- TRAFFIC SIGNAL DETECTOR
- TRAFFIC SIGNAL JUNCTION BOX

COMMUNICATIONS

- TELEPHONE DISTRIBUTION PILLAR
- ABOVE GROUND JOINING POST
- OPTICAL FIBRE JUNCTION BOX
- OPTICAL FIBRE PIT
- STD MAIN PIT
- TELEPHONE BOX POINT
- TELEPHONE POLE
- TELEPHONE SINGLE CONCRETE PIT
- TELEPHONE TRIPLE CONCRETE PIT
- TELEPHONE TWIN CONCRETE PIT

GAS

- MANHOLE COVER
- METER
- PIPELINE MARKER
- PIPELINE MARKER - HIGH PRESSURE
- VALVE BOX
- VENT PIPE
- TEST POINT

WATER

- AIR VALVE
- EARTH TERMINAL
- FIRE HYDRANT
- HYDRANT
- METER
- STOP VALVE
- TAP

SEWER

- MANHOLE COVER
- VENT PIPE
- LAMP HOLE

DRAINAGE / STORMWATER

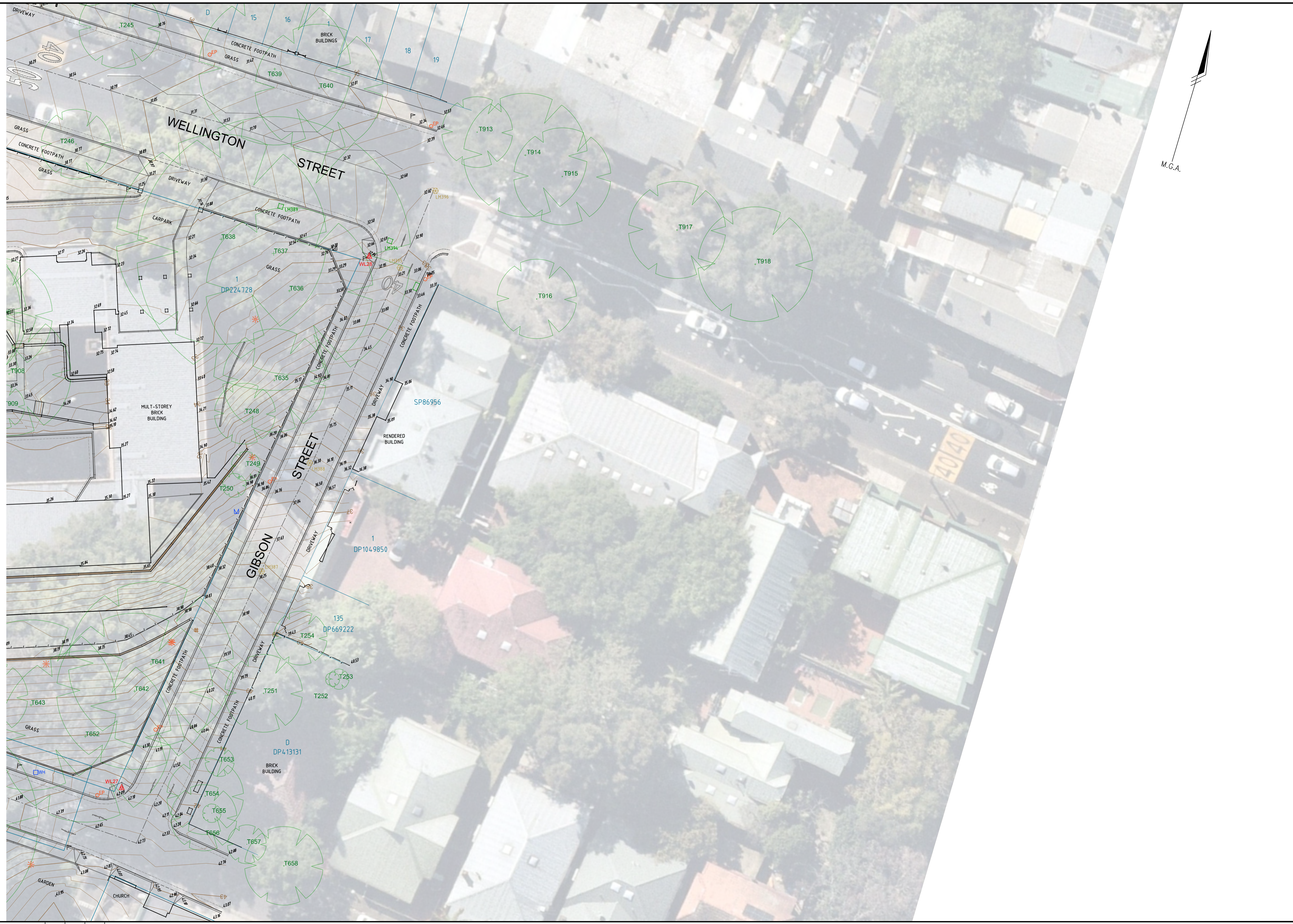
- DRAINAGE JUNCTION MANHOLE
- GULLY PIT POINT
- INLET TO SUMP
- INVERT OF PIPE
- CONCRETE JUNCTION BOX
- SUBSOIL DRAIN FLUSH POINT
- KERB INLET

CULTURAL

- SIGN POST
- LARGE SIGN
- BOLLARD
- FLOOR LEVEL
- CORNER OF BUILDING
- PARKING METER
- AIR-CONDITIONER

MISCELLANEOUS

- GATIC COVER LID
- UNIDENTIFIED POLE
- UNIDENTIFIED SERVICE PIT
- TREE



REVISIONS	No.	DATE	REVISION DETAILS	DRAWN	CHK	APP
	P2	28.02.2025	ADDITIONAL SURVEY ADDED. SHEET LAYOUT AMENDED	LMB	TC	GE
	P1	11.02.2025	INITIAL ISSUE	LMB	TC	GE

HORIZ. SCALE:	1:200	@ A1
VERT. SCALE:		@ A1
COORDINATES:	MGA 2020	DATUM: AHD
ORIGIN:	PM59542	ORIGIN: PM59542

NOTES

EXPLANATORY NOTES ON OVERALL PLAN PR-SU1200 ARE APPLICABLE TO ALL SHEETS ON THIS PLAN

SEE SHEET 18 PLAN PR-SU1218 FOR TREE SCHEDULE

SEE OVERALL PLAN PR-SU1200 FOR SURVEY CONTROL

- EASEMENTS**
- (A) EASEMENT FOR ROCK ANCHORS 1.9 WIDE
 - (B) EASEMENTS FOR ROCK ANCHORS VARIABLE WIDTH
 - (C) EASEMENTS FOR ROCK ANCHORS 1.25 AND 1.9 WIDE
 - (D) CROSS EASEMENTS
 - (E) EASEMENT FOR OVERHANG 1 FT WIDE
 - (F) RIGHT OF WAY
 - (G) EASEMENT FOR GAS MAIN

CLIENT:	FERRYGARRIG	Stockland
SURVEY:	RPS	DATE OF SURVEY: NOV 2024
DRAWN:	LMB	DATE OF PLAN: 11.02.2025
CHECKED:	TC	DATE LAST SAVED: 27.02.2025
APPROVED:	GE	DATE APPROVED: 11.02.2025

TITLE

EXISTING TOPOGRAPHIC
PLAN SHEET 11
WATERLOO ESTATE RENEWEL (SOUTH)

JOB No SYD-374169

ISSUE P2

DRAWING No PR-SU1211

SCALE A1
MAKING COMPLEX EASY

LEGEND

ELECTRICAL

- CABLE JUNCTION BOX
- CABLE MANHOLE
- DISTRIBUTION FUSE POINT
- GARDEN LIGHT
- POLE - LIGHT
- POLE - POWER & LIGHT
- POWER SERVICE PILLAR
- TRANSFORMER CABINET CENTRE

TRAFFIC CONTROL

- TRAFFIC CONTROL SIGNAL
- TRAFFIC SIGNAL CONTROLLER
- TRAFFIC SIGNAL DETECTOR
- TRAFFIC SIGNAL JUNCTION BOX

COMMUNICATIONS

- TELEPHONE DISTRIBUTION PILLAR
- ABOVE GROUND JOINING POST
- OPTICAL FIBRE JUNCTION BOX
- OPTICAL FIBRE PIT
- STD MAIN PIT
- TELEPHONE BOX POINT
- TELEPHONE POLE
- TELEPHONE SINGLE CONCRETE PIT
- TELEPHONE TRIPLE CONCRETE PIT
- TELEPHONE TWIN CONCRETE PIT

GAS

- MANHOLE COVER
- METER
- PIPELINE MARKER
- PIPELINE MARKER - HIGH PRESSURE
- VALVE BOX
- VENT PIPE
- TEST POINT

WATER

- AIR VALVE
- EARTH TERMINAL
- FIRE HYDRANT
- HYDRANT
- METER
- STOP VALVE
- TAP

SEWER

- MANHOLE COVER
- VENT PIPE
- LAMP HOLE

DRAINAGE / STORMWATER

- DRAINAGE JUNCTION MANHOLE
- GULLY PIT POINT
- INLET TO SUMP
- INVERT OF PIPE
- CONCRETE JUNCTION BOX
- SUBSOIL DRAIN FLUSH POINT
- KERB INLET

CULTURAL

- SIGN POST
- LARGE SIGN
- BOLLARD
- FLOOR LEVEL
- CORNER OF BUILDING
- PARKING METER
- AIR-CONDITIONER

MISCELLANEOUS

- GATIC COVER LID
- UNIDENTIFIED POLE
- UNIDENTIFIED SERVICE PIT
- TREE



NO.	DATE	REVISION DETAILS	DRAWN	CHK	APP
P2	28.02.2025	ADDITIONAL SURVEY ADDED. SHEET LAYOUT AMENDED	LMB	TC	GE
P1	11.02.2025	INITIAL ISSUE	LMB	TC	GE

HORIZ. SCALE:	1:200	@ A1
VERT. SCALE:		@ A1
COORDINATES:	MGA 2020	DATUM: AHD
ORIGIN:	PM59542	ORIGIN: PM59542

NOTES

EXPLANATORY NOTES ON OVERALL PLAN PR-SU1200 ARE APPLICABLE TO ALL SHEETS ON THIS PLAN

SEE SHEET 18 PLAN PR-SU1218 FOR TREE SCHEDULE

SEE OVERALL PLAN PR-SU1200 FOR SURVEY CONTROL

- EASEMENTS**
- (A) EASEMENT FOR ROCK ANCHORS 1.9 WIDE
 - (B) EASEMENTS FOR ROCK ANCHORS VARIABLE WIDTH
 - (C) EASEMENTS FOR ROCK ANCHORS 1.25 AND 1.9 WIDE
 - (D) CROSS EASEMENTS
 - (E) EASEMENT FOR OVERHANG 1 FT WIDE
 - (F) RIGHT OF WAY
 - (G) EASEMENT FOR GAS MAIN

CLIENT:	FERRYCARRIG	Stockland
SURVEY:	RPS	DATE OF SURVEY: NOV 2024
DRAWN:	LMB	DATE OF PLAN: 11.02.2025
CHECKED:	TC	DATE LAST SAVED: 27.02.2025
APPROVED:	GE	DATE APPROVED: 11.02.2025

TITLE

EXISTING TOPOGRAPHIC
PLAN SHEET 12
WATERLOO ESTATE RENEWAL (SOUTH)

DRAWING No PR-SU1212

JOB No SYD-374169

ISSUE P2

SIZE A1

LEGEND

ELECTRICAL

- CABLE JUNCTION BOX
- CABLE MANHOLE
- DISTRIBUTION FUSE POINT
- GARDEN LIGHT
- POLE - LIGHT
- POLE - POWER & LIGHT
- POWER SERVICE PILLAR
- TRANSFORMER CABINET CENTRE

TRAFFIC CONTROL

- TRAFFIC CONTROL SIGNAL
- TRAFFIC SIGNAL CONTROLLER
- TRAFFIC SIGNAL DETECTOR
- TRAFFIC SIGNAL JUNCTION BOX

COMMUNICATIONS

- TELEPHONE DISTRIBUTION PILLAR
- ABOVE GROUND JOINING POST
- OPTICAL FIBRE JUNCTION BOX
- OPTICAL FIBRE PIT
- STD MAIN PIT
- TELEPHONE BOX POINT
- TELEPHONE POLE
- TELEPHONE SINGLE CONCRETE PIT
- TELEPHONE TRIPLE CONCRETE PIT
- TELEPHONE TWIN CONCRETE PIT

GAS

- MANHOLE COVER
- METER
- PIPELINE MARKER
- PIPELINE MARKER - HIGH PRESSURE
- VALVE BOX
- VENT PIPE
- TEST POINT

WATER

- AIR VALVE
- EARTH TERMINAL
- FIRE HYDRANT
- HYDRANT
- METER
- STOP VALVE
- TAP

SEWER

- MANHOLE COVER
- VENT PIPE
- LAMP HOLE

DRAINAGE / STORMWATER

- DRAINAGE JUNCTION MANHOLE
- GULLY PIT POINT
- INLET TO SUMP
- INVERT OF PIPE
- CONCRETE JUNCTION BOX
- SUBSOIL DRAIN FLUSH POINT
- KERB INLET

CULTURAL

- SIGN POST
- LARGE SIGN
- BOLLARD
- FLOOR LEVEL
- CORNER OF BUILDING
- PARKING METER
- AIR-CONDITIONER

MISCELLANEOUS

- GATIC COVER LID
- UNIDENTIFIED POLE
- UNIDENTIFIED SERVICE PIT
- TREE



REV	DATE	REVISION DETAILS	DRAWN	CHK	APP
P2	28.02.2025	ADDITIONAL SURVEY ADDED. SHEET LAYOUT AMENDED	LMB	TC	GE
P1	11.02.2025	INITIAL ISSUE	LMB	TC	GE
No.	DATE	REVISION DETAILS	DRAWN	CHK	APP

HORIZ. SCALE: 1:200 @ A1	VERT. SCALE: @ A1
COORDINATES: MGA 2020	DATUM: AHD
ORIGIN: PM59542	ORIGIN: PM59542

EXPLANATORY NOTES ON OVERALL PLAN PR-SU1200 ARE APPLICABLE TO ALL SHEETS ON THIS PLAN
 SEE SHEET 18 PLAN PR-SU1218 FOR TREE SCHEDULE
 SEE OVERALL PLAN PR-SU1200 FOR SURVEY CONTROL

- NOTES**
- (A) EASEMENT FOR ROCK ANCHORS 1.9 WIDE
 - (B) EASEMENTS FOR ROCK ANCHORS VARIABLE WIDTH
 - (C) EASEMENTS FOR ROCK ANCHORS 1.25 AND 1.9 WIDE
 - (D) CROSS EASEMENTS
 - (E) EASEMENT FOR OVERHANG 1 FT WIDE
 - (F) RIGHT OF WAY
 - (G) EASEMENT FOR GAS MAIN

CLIENT: FERRYGARRIB Stockland

SURVEY: RPS DATE OF SURVEY: NOV 2024

DRAWN: LMB DATE OF PLAN: 11.02.2025

CHECKED: TC DATE LAST SAVED: 27.02.2025

APPROVED: GE DATE APPROVED: 11.02.2025

TITLE EXISTING TOPOGRAPHIC PLAN SHEET 13 WATERLOO ESTATE RENEWAL (SOUTH)

JOB No SYD-374169

ISSUE P2

DRAWING No PR-SU1213

SCALE A1

LEGEND

ELECTRICAL

- CABLE JUNCTION BOX
- CABLE MANHOLE
- DISTRIBUTION FUSE POINT
- GARDEN LIGHT
- POLE - LIGHT
- POLE - POWER & LIGHT
- POWER SERVICE PILLAR
- TRANSFORMER JUNCTION BOX

TRAFFIC CONTROL

- TRAFFIC CONTROL SIGNAL
- TRAFFIC SIGNAL CONTROLLER
- TRAFFIC SIGNAL DETECTOR
- TRAFFIC SIGNAL JUNCTION BOX

COMMUNICATIONS

- TELEPHONE DISTRIBUTION PILLAR
- ABOVE GROUND JOINING POST
- OPTICAL FIBRE JUNCTION BOX
- OPTICAL FIBRE PIT
- STD MAIN PIT
- TELEPHONE BOX POINT
- TELEPHONE POLE
- TELEPHONE SINGLE CONCRETE PIT
- TELEPHONE TRIPLE CONCRETE PIT
- TELEPHONE TWIN CONCRETE PIT

GAS

- MANHOLE COVER
- METER
- PIPELINE MARKER
- PIPELINE MARKER - HIGH PRESSURE
- VALVE BOX
- VENT PIPE
- TEST POINT

WATER

- AIR VALVE
- EARTH TERMINAL
- FIRE HYDRANT
- HYDRANT
- METER
- STOP VALVE
- TAP

SEWER

- MANHOLE COVER
- VENT PIPE
- LAMP HOLE

DRAINAGE / STORMWATER

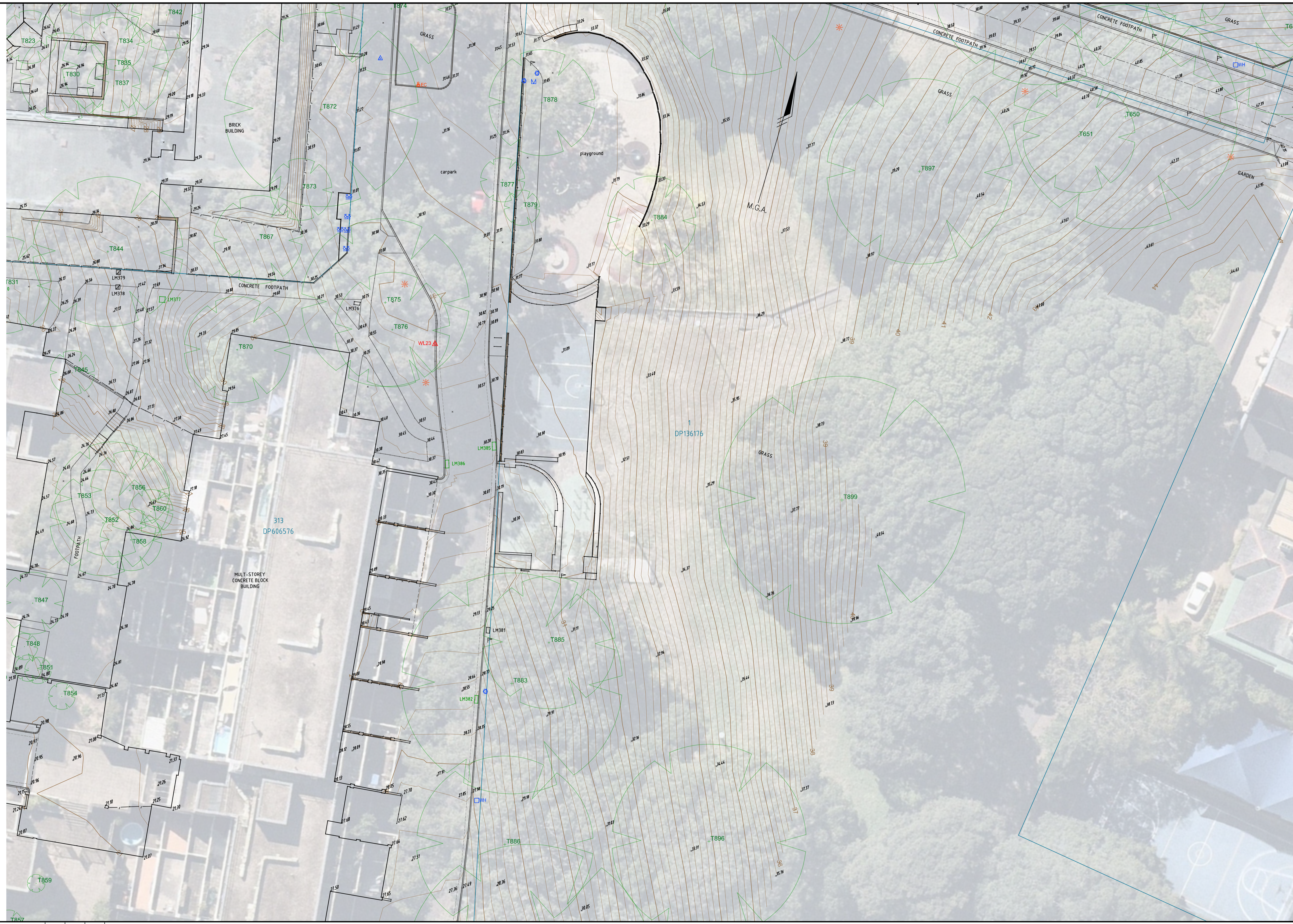
- DRAINAGE JUNCTION MANHOLE
- GULLY PIT POINT
- INLET TO SUMP
- INVERT OF PIPE
- CONCRETE JUNCTION BOX
- SUBSOIL DRAIN FLUSH POINT
- KERB INLET

CULTURAL

- SIGN POST
- LARGE SIGN
- BOLLARD
- FLOOR LEVEL
- CORNER OF BUILDING
- PARKING METER
- AIR-CONDITIONER

MISCELLANEOUS

- GATIC COVER LID
- UNIDENTIFIED POLE
- UNIDENTIFIED SERVICE PIT
- TREE



NO.	DATE	REVISION DETAILS	DRAWN	CHK	APP.
P2	28.02.2025	ADDITIONAL SURVEY ADDED. SHEET LAYOUT AMENDED	LMB	TC	GE
P1	11.02.2025	INITIAL ISSUE	LMB	TC	GE

HORIZ. SCALE:	1:200	@ A1
VERT. SCALE:	@ A1	
COORDINATES:	MGA 2020	DATUM: AHD
ORIGIN:	PM59542	ORIGIN: PM59542

NOTES

EXPLANATORY NOTES ON OVERALL PLAN PR-SU1200 ARE APPLICABLE TO ALL SHEETS ON THIS PLAN

SEE SHEET 18 PLAN PR-SU1218 FOR TREE SCHEDULE

SEE OVERALL PLAN PR-SU1200 FOR SURVEY CONTROL

- EASEMENTS**
- (A) EASEMENT FOR ROCK ANCHORS 1.9 WIDE
 - (B) EASEMENTS FOR ROCK ANCHORS VARIABLE WIDTH
 - (C) EASEMENTS FOR ROCK ANCHORS 1.25 AND 1.9 WIDE
 - (D) CROSS EASEMENTS
 - (E) EASEMENT FOR OVERHANG 1 FT WIDE
 - (F) RIGHT OF WAY
 - (G) EASEMENT FOR GAS MAIN

CLIENT:	FERRYGARRIB	Stockland
SURVEY:	RPS	DATE OF SURVEY: NOV 2024
DRAWN:	LMB	DATE OF PLAN: 11.02.2025
CHECKED:	TC	DATE LAST SAVED: 27.02.2025
APPROVED:	GE	DATE APPROVED: 11.02.2025

TITLE

EXISTING TOPOGRAPHIC
PLAN SHEET 14
WATERLOO ESTATE RENEWEL (SOUTH)

JOB No SYD-374169

ISSUE P2

DRAWING No PR-SU1214

LEGEND

ELECTRICAL

- CABLE JUNCTION BOX
- CABLE MANHOLE
- DISTRIBUTION FUSE POINT
- GARDEN LIGHT
- POLE - LIGHT
- POLE - POWER & LIGHT
- POWER SERVICE PILLAR
- TRANSFORMER CABINET CENTRE

TRAFFIC CONTROL

- TRAFFIC CONTROL SIGNAL
- TRAFFIC SIGNAL CONTROLLER
- TRAFFIC SIGNAL DETECTOR
- TRAFFIC SIGNAL JUNCTION BOX

COMMUNICATIONS

- TELEPHONE DISTRIBUTION PILLAR
- ABOVE GROUND JOINING POST
- OPTICAL FIBRE JUNCTION BOX
- OPTICAL FIBRE PIT
- STD MAIN PIT
- TELEPHONE BOX POINT
- TELEPHONE POLE
- TELEPHONE SINGLE CONCRETE PIT
- TELEPHONE TRIPLE CONCRETE PIT
- TELEPHONE TWIN CONCRETE PIT

GAS

- MANHOLE COVER
- METER
- PIPELINE MARKER
- PIPELINE MARKER - HIGH PRESSURE
- VALVE BOX
- VENT PIPE
- TEST POINT

WATER

- AIR VALVE
- EARTH TERMINAL
- FIRE HYDRANT
- HYDRANT
- METER
- STOP VALVE
- TAP

SEWER

- MANHOLE COVER
- VENT PIPE
- LAMP HOLE

DRAINAGE / STORMWATER

- DRAINAGE JUNCTION MANHOLE
- GULLY PIT POINT
- INLET TO SUMP
- INVERT OF PIPE
- CONCRETE JUNCTION BOX
- SUBSOIL DRAIN FLUSH POINT
- KERB INLET

CULTURAL

- SIGN POST
- LARGE SIGN
- BOLLARD
- FLOOR LEVEL
- CORNER OF BUILDING
- PARKING METER
- AIR-CONDITIONER

MISCELLANEOUS

- GATIC COVER LID
- UNIDENTIFIED POLE
- UNIDENTIFIED SERVICE PIT
- TREE



REVISIONS	DATE	REVISION DETAILS	DRAWN	CHK	APP
P2	28.02.2025	ADDITIONAL SURVEY ADDED. SHEET LAYOUT AMENDED	LMB	TC	GE
P1	11.02.2025	INITIAL ISSUE	LMB	TC	GE
No.	DATE	REVISION DETAILS	DRAWN	CHK	APP

HORIZ. SCALE:	1:200 @ A1	VERT. SCALE:	@ A1
COORDINATES:	MGA 2020	DATUM:	AHD
ORIGIN:	PM59542	ORIGIN:	PM59542

NOTES

EXPLANATORY NOTES ON OVERALL PLAN PR-SU1200 ARE APPLICABLE TO ALL SHEETS ON THIS PLAN

SEE SHEET 18 PLAN PR-SU1218 FOR TREE SCHEDULE

SEE OVERALL PLAN PR-SU1200 FOR SURVEY CONTROL

- EASEMENTS**
- (A) EASEMENT FOR ROCK ANCHORS 1.9 WIDE
 - (B) EASEMENTS FOR ROCK ANCHORS VARIABLE WIDTH
 - (C) EASEMENTS FOR ROCK ANCHORS 1.25 AND 1.9 WIDE
 - (D) CROSS EASEMENTS
 - (E) EASEMENT FOR OVERHANG 1 FT WIDE
 - (F) RIGHT OF WAY
 - (G) EASEMENT FOR GAS MAIN

CLIENT:	FERRYCARRIG	Stockland
SURVEY:	RPS	DATE OF SURVEY: NOV 2024
DRAWN:	LMB	DATE OF PLAN: 11.02.2025
CHECKED:	TC	DATE LAST SAVED: 27.02.2025
APPROVED:	GE	DATE APPROVED: 11.02.2025

TITLE

EXISTING TOPOGRAPHIC PLAN SHEET 15

WATERLOO ESTATE RENEWAL (SOUTH)

JOB No SYD-374169 **ISSUE** P2

DRAWING No PR-SU1215 **SIZE** A1

REPRODUCTION IN COLOUR ONLY.

LEGEND

ELECTRICAL

- CABLE JUNCTION BOX
- CABLE MANHOLE
- DISTRIBUTION FUSE POINT
- ☀ GARDEN LIGHT
- POLE - LIGHT
- POLE - POWER & LIGHT
- POWER SERVICE PILLAR
- TRANSFORMER CABINET CENTRE

TRAFFIC CONTROL

- TRAFFIC CONTROL SIGNAL
- TRAFFIC SIGNAL CONTROLLER
- TRAFFIC SIGNAL DETECTOR
- TRAFFIC SIGNAL JUNCTION BOX

COMMUNICATIONS

- TELEPHONE DISTRIBUTION PILLAR
- ABOVE GROUND JOINING POST
- OPTICAL FIBRE JUNCTION BOX
- OPTICAL FIBRE PIT
- STD MAIN PIT
- TELEPHONE BOX POINT
- TELEPHONE POLE
- TELEPHONE SINGLE CONCRETE PIT
- TELEPHONE TRIPLE CONCRETE PIT
- TELEPHONE TWIN CONCRETE PIT

GAS

- MANHOLE COVER
- METER
- PIPELINE MARKER
- PIPELINE MARKER - HIGH PRESSURE
- VALVE BOX
- VENT PIPE
- TEST POINT

WATER

- AIR VALVE
- EARTH TERMINAL
- FIRE HYDRANT
- HYDRANT
- METER
- STOP VALVE
- TAP

SEWER

- MANHOLE COVER
- VENT PIPE
- LAMPHOLE

DRAINAGE / STORMWATER

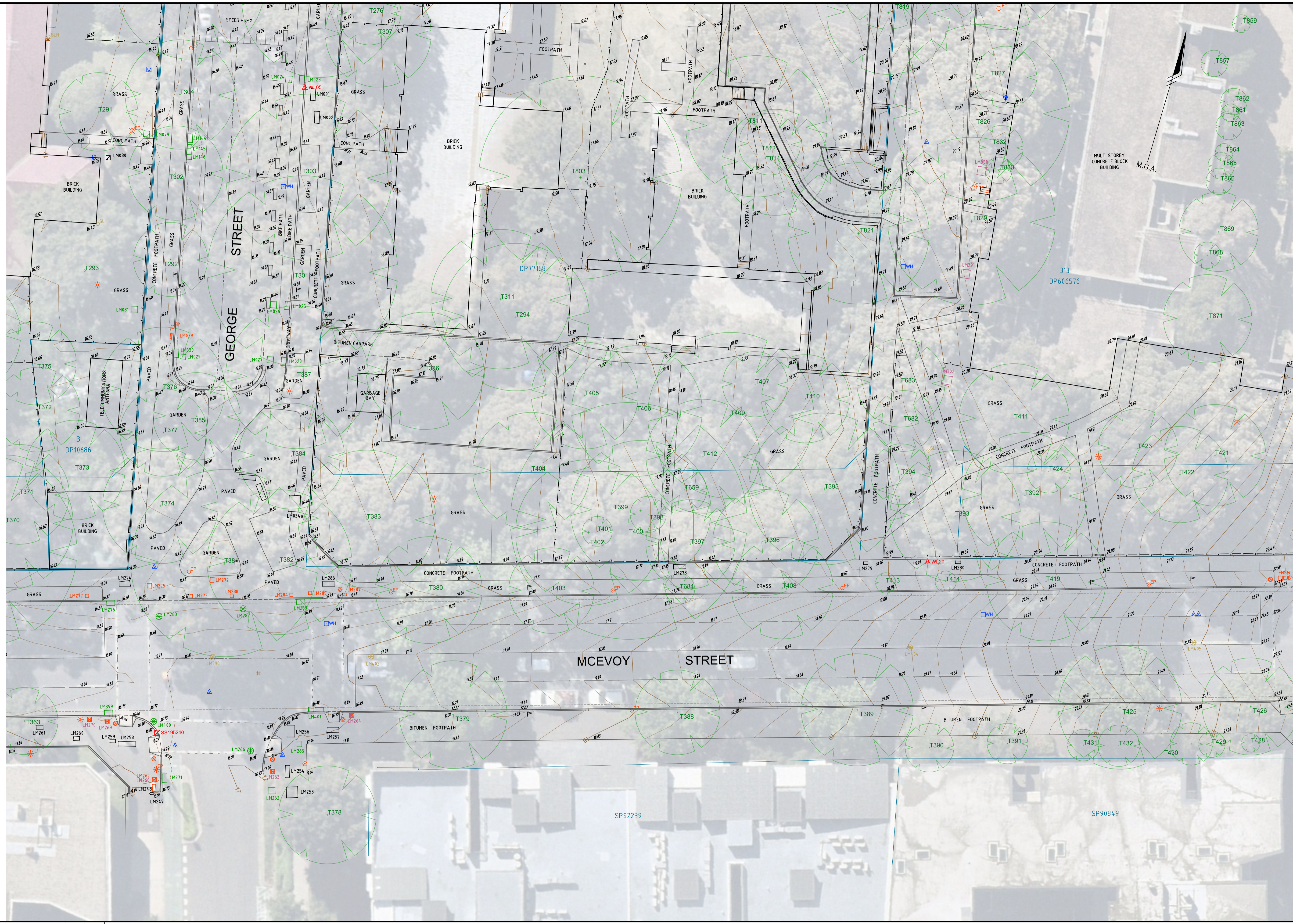
- DRAINAGE JUNCTION MANHOLE
- GULLY PIT POINT
- INLET TO SUMP
- INVERT OF PIPE
- CONCRETE JUNCTION BOX
- SUBSOIL DRAIN FLUSH POINT
- KERB INLET

CULTURAL

- SIGN POST
- LARGE SIGN
- BOLLARD
- FLOOR LEVEL
- CORNER OF BUILDING
- PARKING METER
- AC AIR-CONDITIONER

MISCELLANEOUS

- GATIC COVER LID
- UNIDENTIFIED POLE
- UNIDENTIFIED SERVICE PIT
- TREE



REVISIONS	No.	DATE	REVISION DETAILS	DRAWN	CHK	APP.
	P2	28.02.2025	ADDITIONAL SURVEY ADDED. SHEET LAYOUT AMENDED	LMB	TC	GE
	P1	11.02.2025	INITIAL ISSUE	LMB	TC	GE

HORIZ. SCALE:	1:200	@ A1
VERT. SCALE:	@ A1	
COORDINATES:	MGA 2020	DATUM: AHD
ORIGIN:	PM59542	ORIGIN: PM59542

NOTES

EXPLANATORY NOTES ON OVERALL PLAN PR-SU1200 ARE APPLICABLE TO ALL SHEETS ON THIS PLAN

SEE SHEET 18 PLAN PR-SU1218 FOR TREE SCHEDULE

SEE OVERALL PLAN PR-SU1200 FOR SURVEY CONTROL

- EASEMENTS**
- (A) EASEMENT FOR ROCK ANCHORS 1.9 WIDE
 - (B) EASEMENTS FOR ROCK ANCHORS VARIABLE WIDTH
 - (C) EASEMENTS FOR ROCK ANCHORS 1.25 AND 1.9 WIDE
 - (D) CROSS EASEMENTS
 - (E) EASEMENT FOR OVERHANG 1 FT WIDE
 - (F) RIGHT OF WAY
 - (G) EASEMENT FOR GAS MAIN

CLIENT: FERRYCARRIG Stockland

SURVEY: RPS

DRAWN: LMB

CHECKED: TC

APPROVED: GE

DATE OF SURVEY: NOV 2024

DATE OF PLAN: 11.02.2025

DATE LAST SAVED: 27.02.2025

DATE APPROVED: 11.02.2025

TITLE

EXISTING TOPOGRAPHIC PLAN SHEET 16

WATERLOO ESTATE RENEWAL (SOUTH)

DRAWING No PR-SU1216

JOB No SYD-374169

ISSUE P2

SIZE A1

MAKING COMPLEX EASY

LEGEND

ELECTRICAL

- CABLE JUNCTION BOX
- CABLE MANHOLE
- DISTRIBUTION FUSE POINT
- GARDEN LIGHT
- POLE - LIGHT
- POLE - POWER & LIGHT
- POWER SERVICE PILLAR
- TRANSFORMER CABINET CENTRE

TRAFFIC CONTROL

- TRAFFIC CONTROL SIGNAL
- TRAFFIC SIGNAL CONTROLLER
- TRAFFIC SIGNAL DETECTOR
- TRAFFIC SIGNAL JUNCTION BOX

COMMUNICATIONS

- TELEPHONE DISTRIBUTION PILLAR
- ABOVE GROUND JOINING POST
- OPTICAL FIBRE JUNCTION BOX
- OPTICAL FIBRE PIT
- STD MAIN PIT
- TELEPHONE BOX POINT
- TELEPHONE POLE
- TELEPHONE SINGLE CONCRETE PIT
- TELEPHONE TRIPLE CONCRETE PIT
- TELEPHONE TWIN CONCRETE PIT

GAS

- MANHOLE COVER
- METER
- PIPELINE MARKER
- PIPELINE MARKER - HIGH PRESSURE
- VALVE BOX
- VENT PIPE
- TEST POINT

WATER

- AIR VALVE
- EARTH TERMINAL
- FIRE HYDRANT
- HYDRANT
- METER
- STOP VALVE
- TAP

SEWER

- MANHOLE COVER
- VENT PIPE
- LAMP HOLE

DRAINAGE / STORMWATER

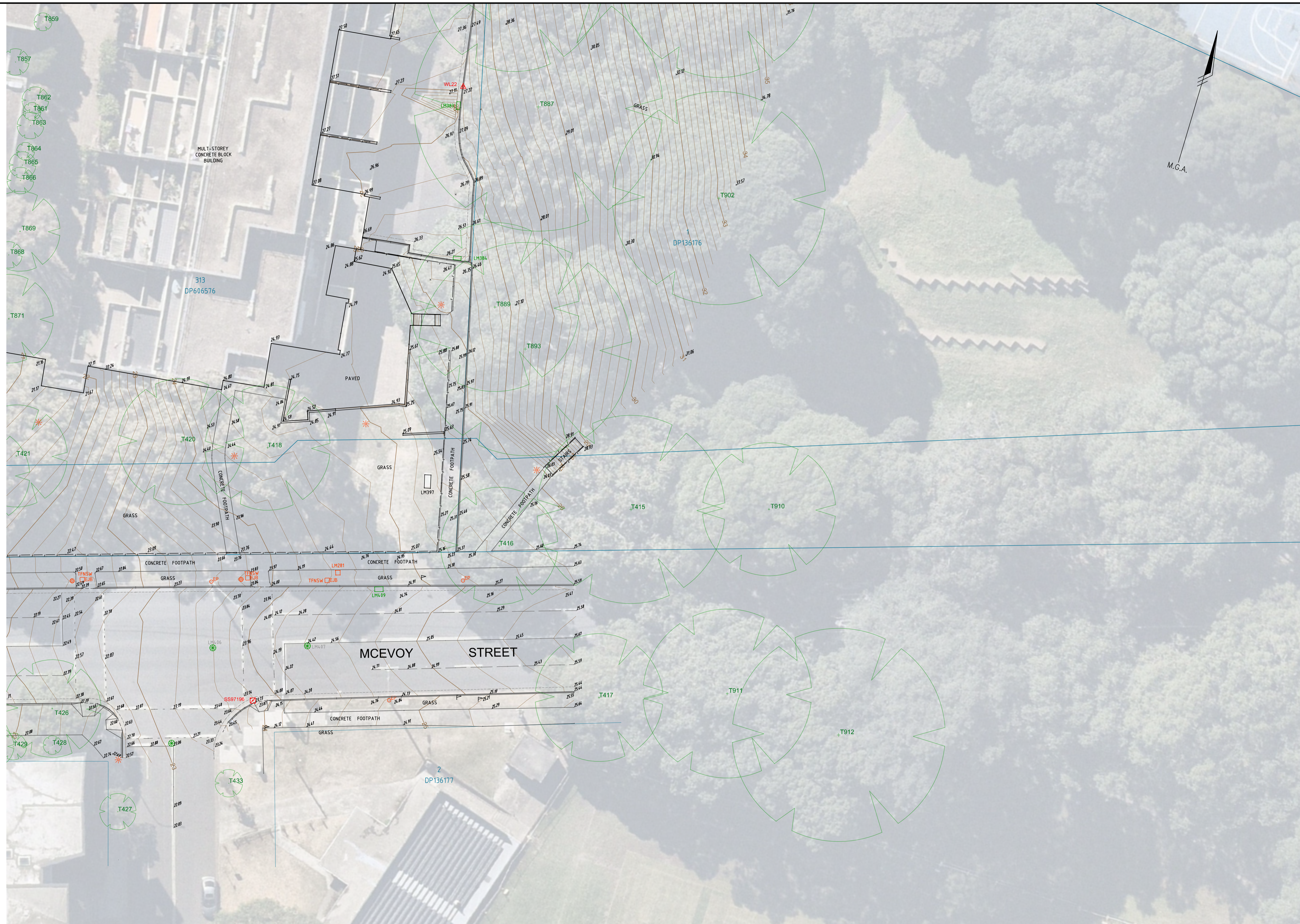
- DRAINAGE JUNCTION MANHOLE
- GULLY PIT POINT
- INLET TO SUMP
- INVERT OF PIPE
- CONCRETE JUNCTION BOX
- SUBSOIL DRAIN FLUSH POINT
- KERB INLET

CULTURAL

- SIGN POST
- LARGE SIGN
- BOLLARD
- FLOOR LEVEL
- CORNER OF BUILDING
- PARKING METER
- AIR-CONDITIONER

MISCELLANEOUS

- GATIC COVER LID
- UNIDENTIFIED POLE
- UNIDENTIFIED SERVICE PIT
- TREE



NO.	DATE	REVISION DETAILS	DRAWN	CHK	APP.
P2	28.02.2025	ADDITIONAL SURVEY ADDED. SHEET LAYOUT AMENDED	LMB	TC	GE
P1	11.02.2025	INITIAL ISSUE	LMB	TC	GE

HORIZ. SCALE:	1:200 @ A1	VERT. SCALE:	@ A1
COORDINATES:	MGA 2020	DATUM:	AHD
ORIGIN:	PM59542	ORIGIN:	PM59542

NOTES

EXPLANATORY NOTES ON OVERALL PLAN PR-SU1200 ARE APPLICABLE TO ALL SHEETS ON THIS PLAN

SEE SHEET 18 PLAN PR-SU1218 FOR TREE SCHEDULE

SEE OVERALL PLAN PR-SU1200 FOR SURVEY CONTROL

- EASEMENTS**
- (A) EASEMENT FOR ROCK ANCHORS 1.9 WIDE
 - (B) EASEMENTS FOR ROCK ANCHORS VARIABLE WIDTH
 - (C) EASEMENTS FOR ROCK ANCHORS 1.25 AND 1.9 WIDE
 - (D) CROSS EASEMENTS
 - (E) EASEMENT FOR OVERHANG 1 FT WIDE
 - (F) RIGHT OF WAY
 - (G) EASEMENT FOR GAS MAIN

CLIENT:	FERRYCARRIG Stockland
SURVEY:	RPS
DRAWN:	LMB
CHECKED:	TC
APPROVED:	GE
DATE OF PLAN:	11.02.2025
DATE LAST SAVED:	27.02.2025
DATE APPROVED:	11.02.2025

TITLE

EXISTING TOPOGRAPHIC
PLAN SHEET 17
WATERLOO ESTATE RENEWEL (SOUTH)

JOB No SYD-374169

ISSUE P2

DRAWING No PR-SU1217

SCALE A1

REPRODUCTION COMPLEX EASY

