

# Sydney Metro Martin Place

## North Tower Base Building Changes

*SSDA Stamped plans & FC2 Comparison*

*Rev #01 – 15/03/22*

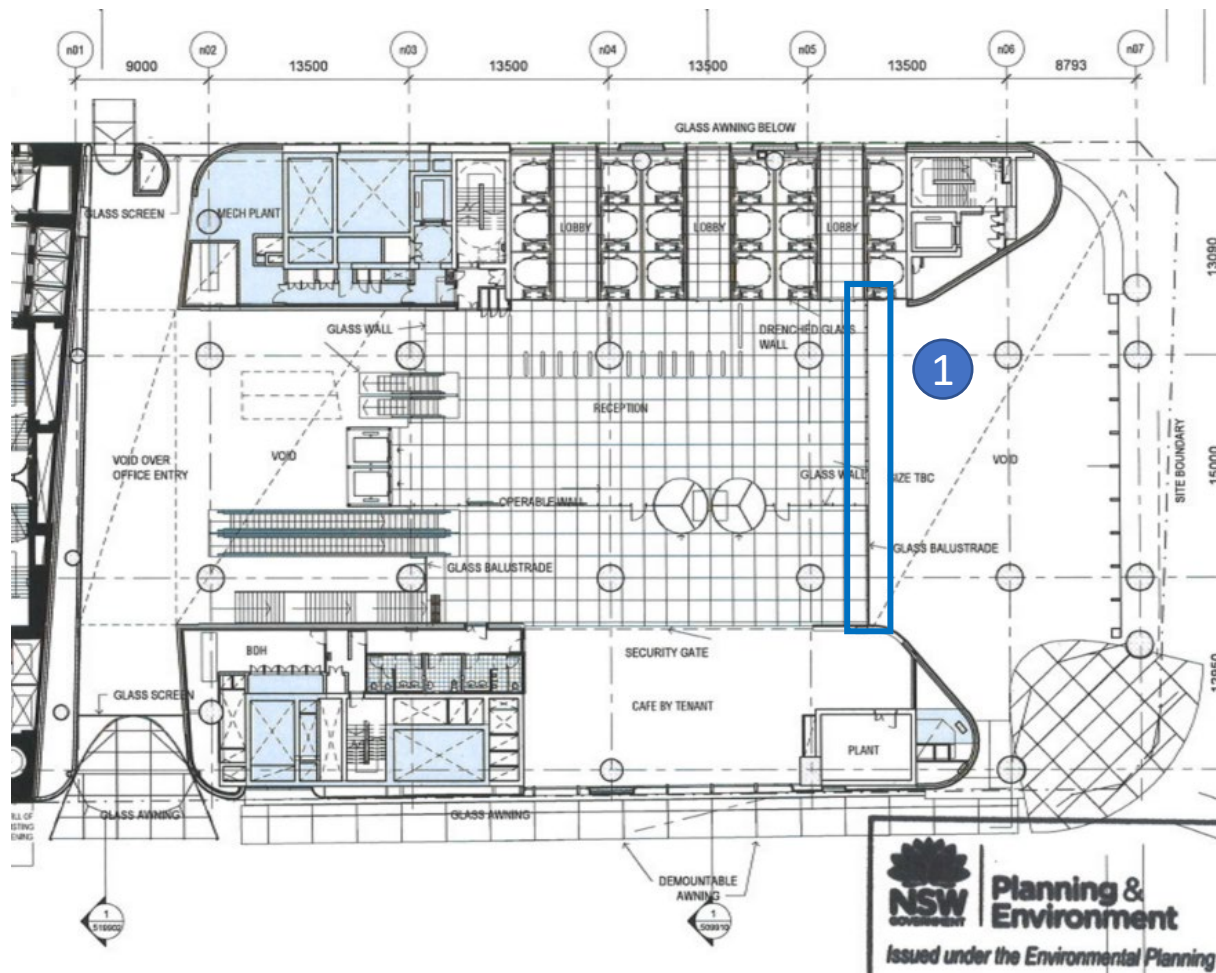




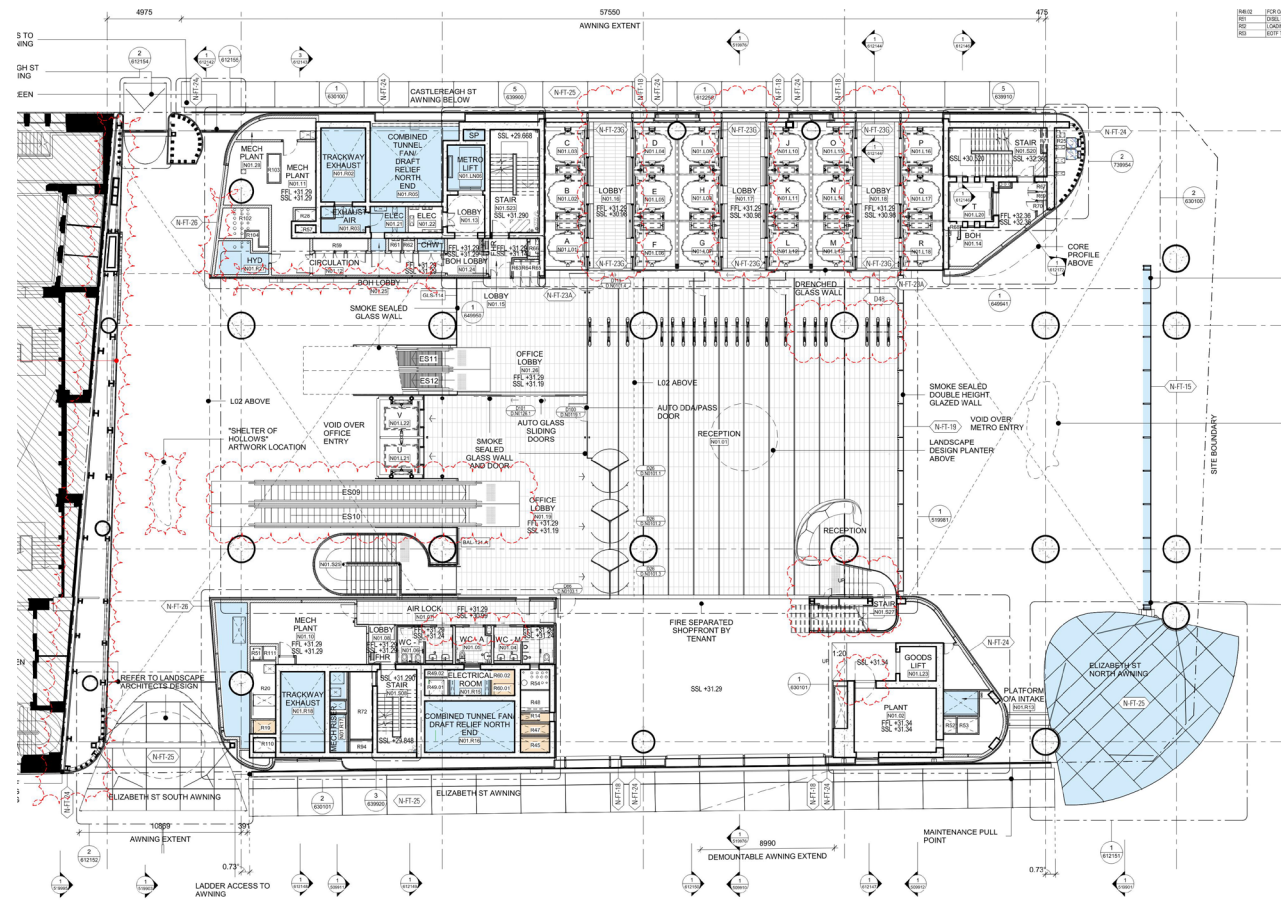
# Level 01 Plan

## SSD 9270 Plan with FC2 changes marked up

1.Alteration of approved open balcony to include full height glazing to northern end of lobby.



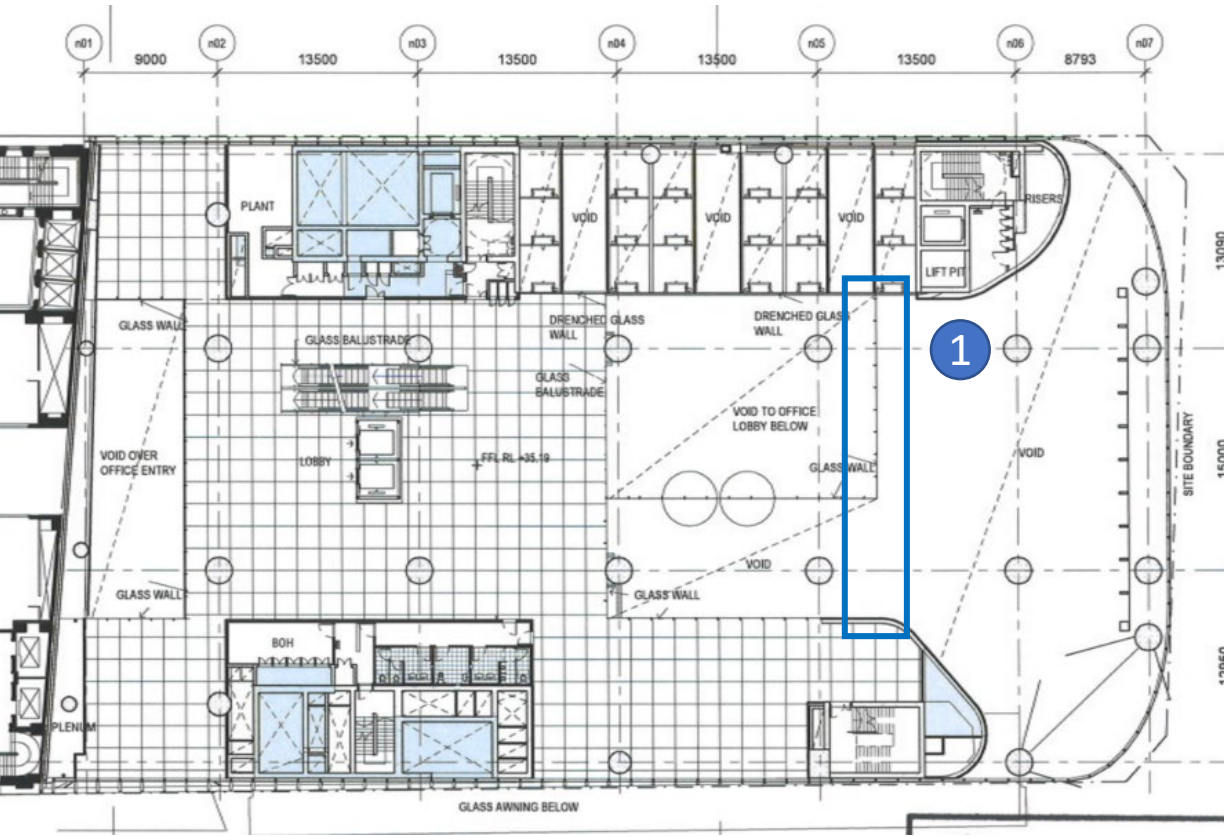
# FC2 Drawing



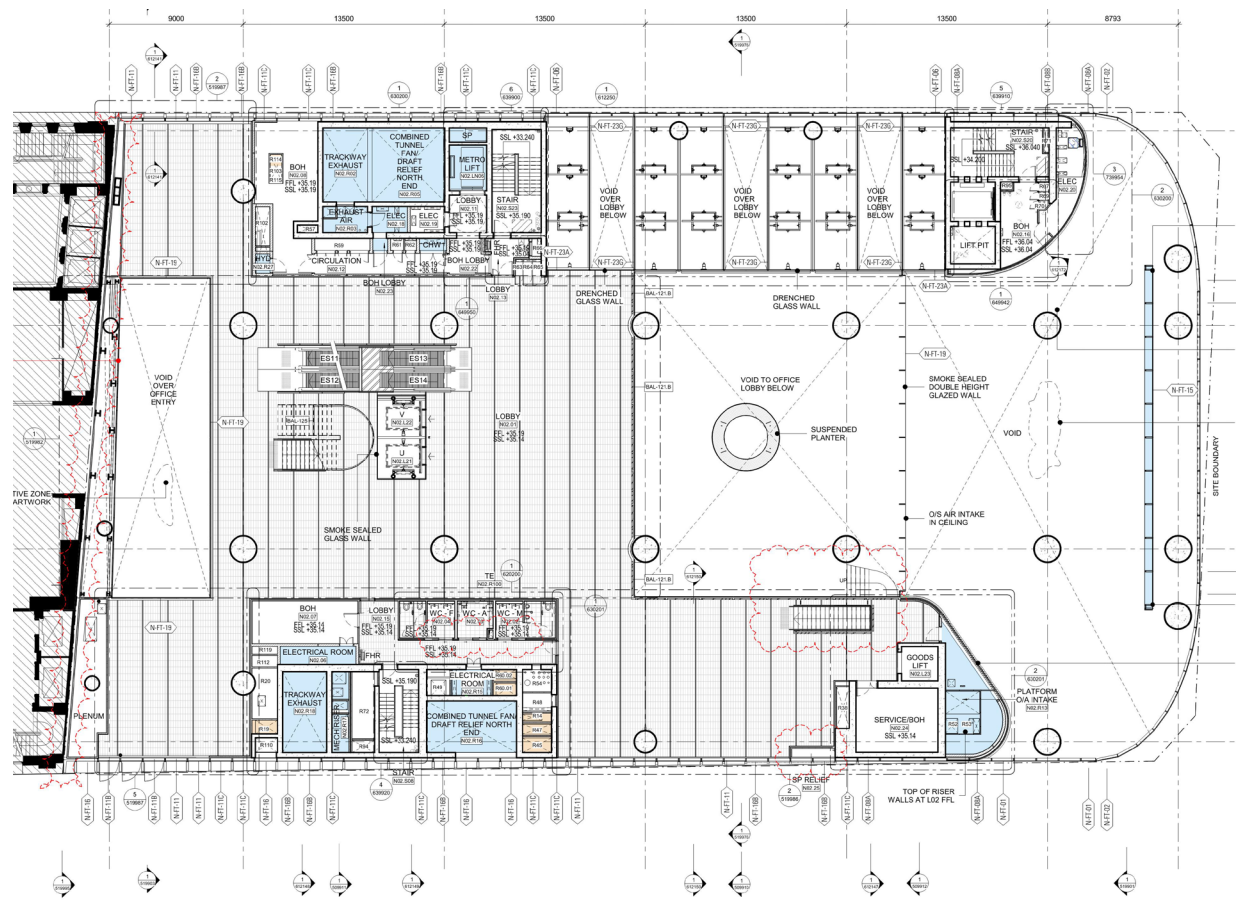
# Level 02 Plan

## SSD 9270 Plan with FC2 changes marked up

- 1. Alteration of approved open balcony to include full height glazing to northern end of lobby.



## FC2 Drawing

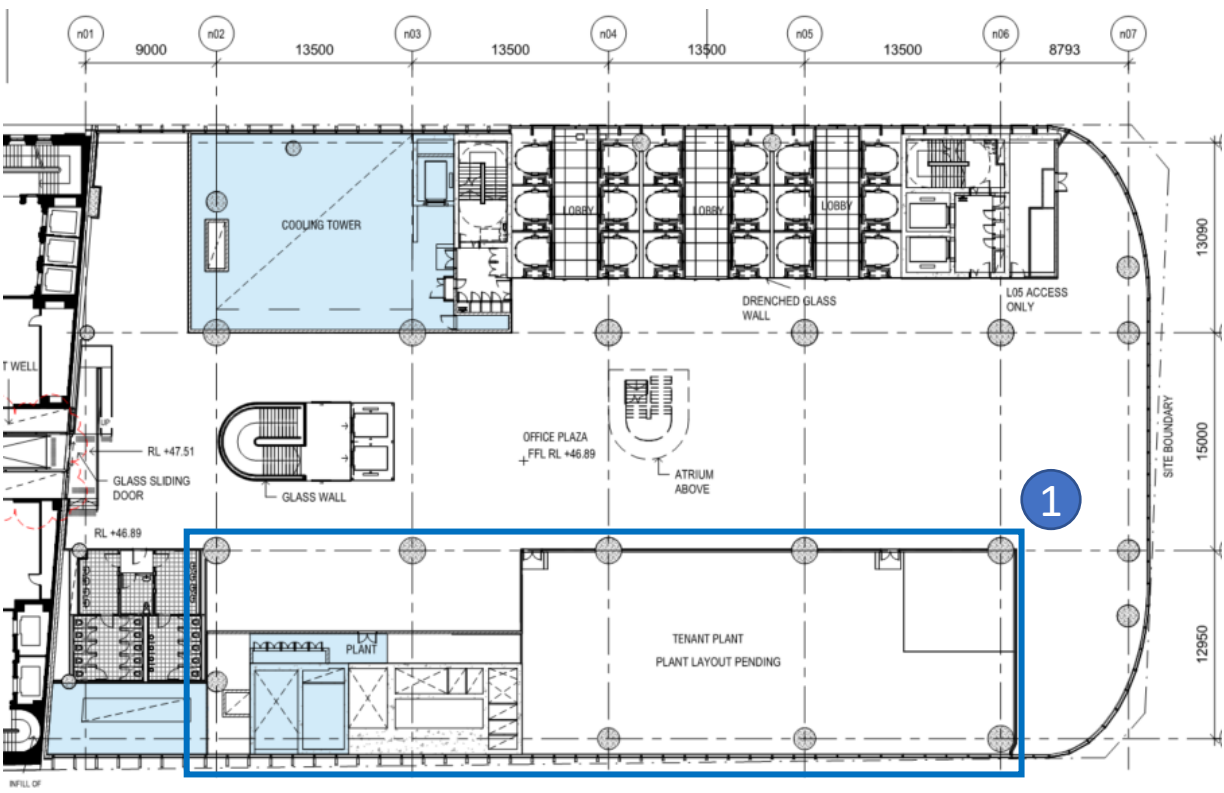




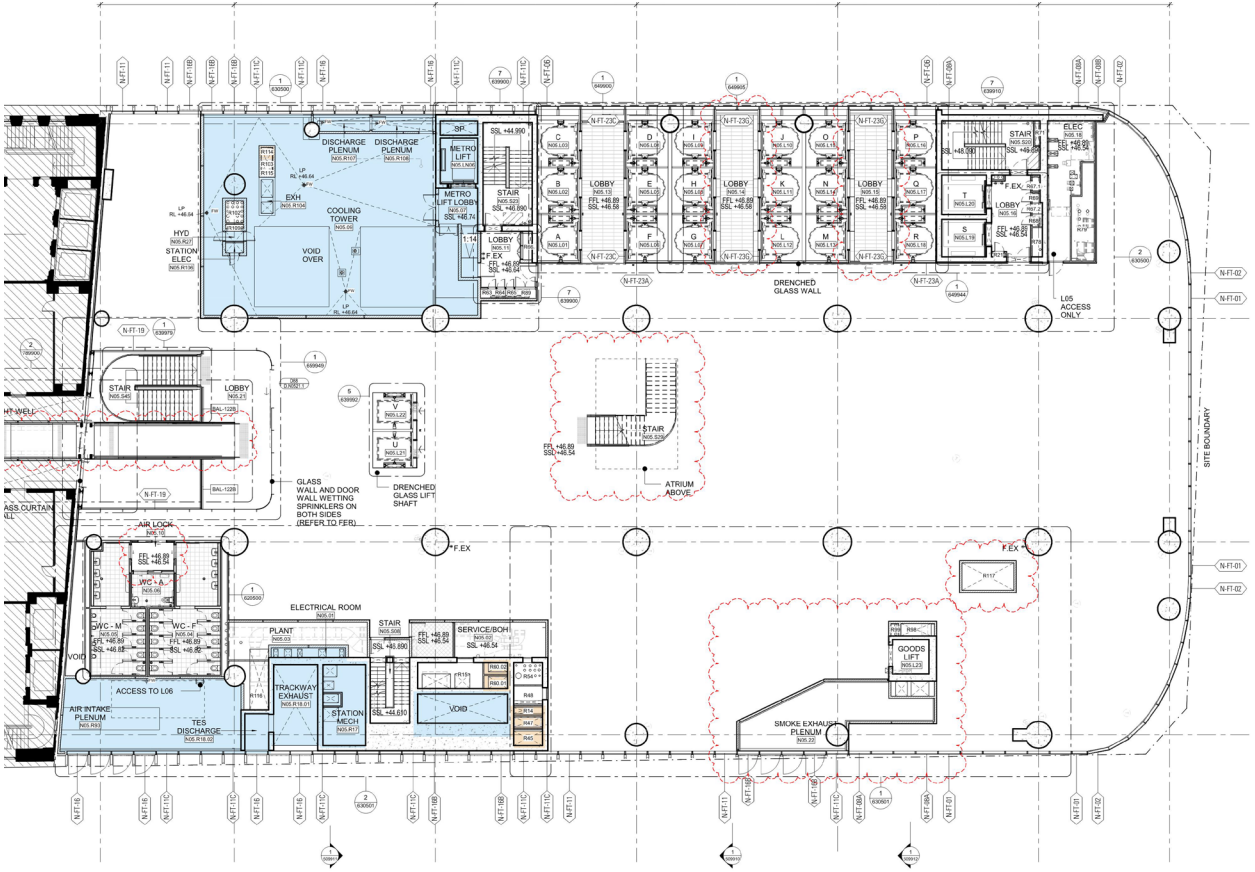
# Level 05 Plan

## SSDA 9270 plan with FC2 changes marked up

1. Relocation of tenant plant from Level 5 to Level 6.



## FC2 Drawing

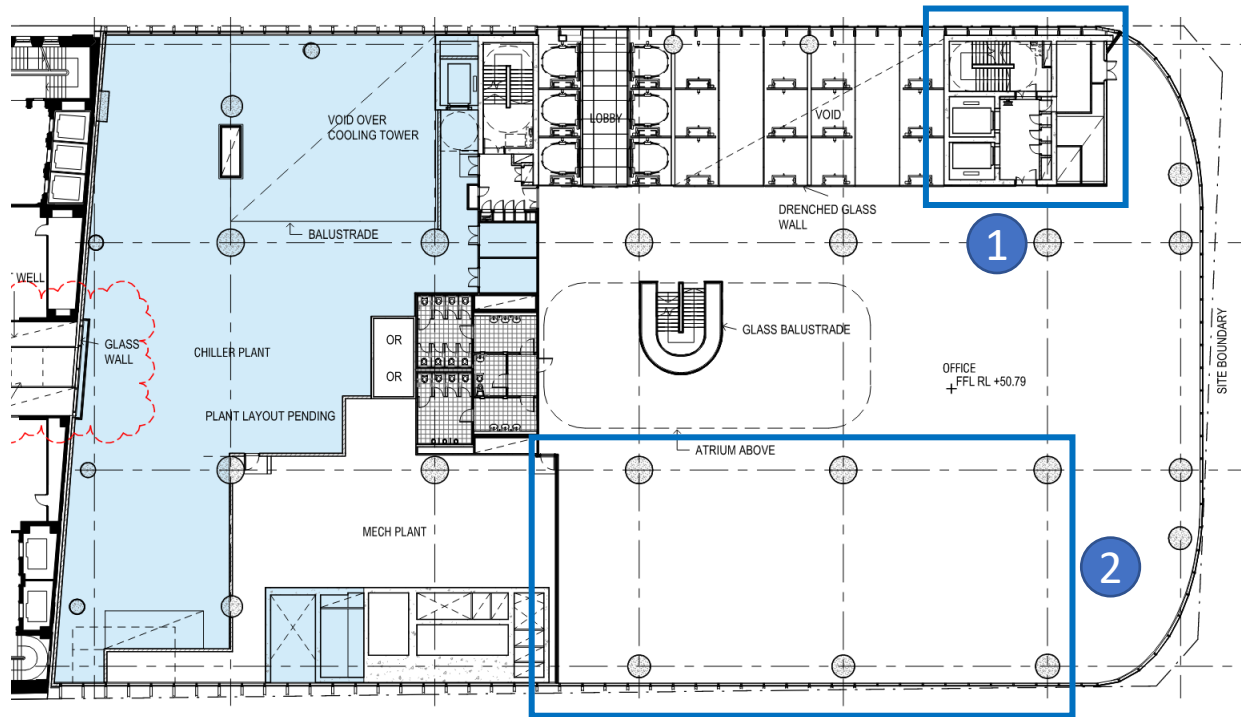




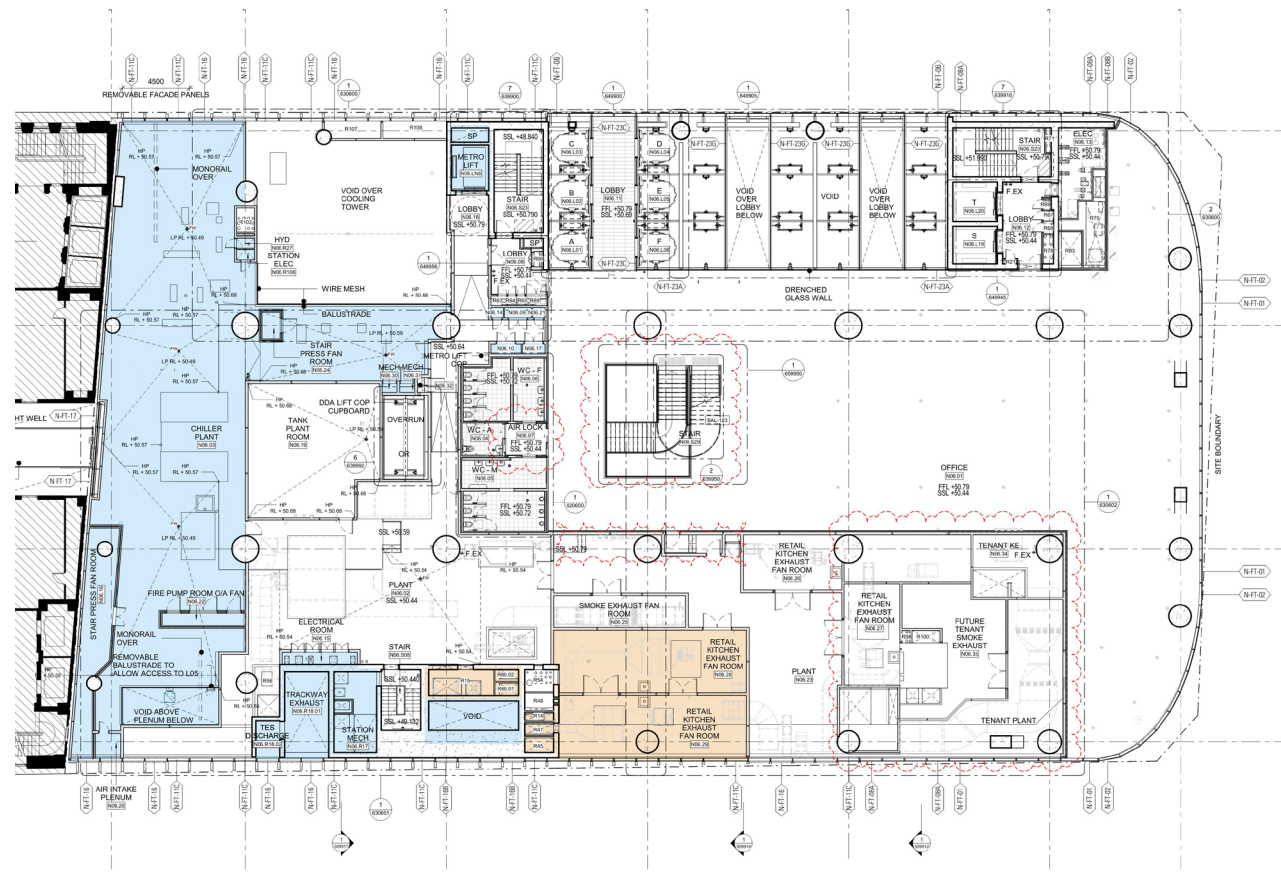
# Level 06 Plan

## SSDA 9720 with FC2 changes marked up

- 1. Minor alterations to arrangement of plant and services,
- 2. Relocation of tenant plant to level 6



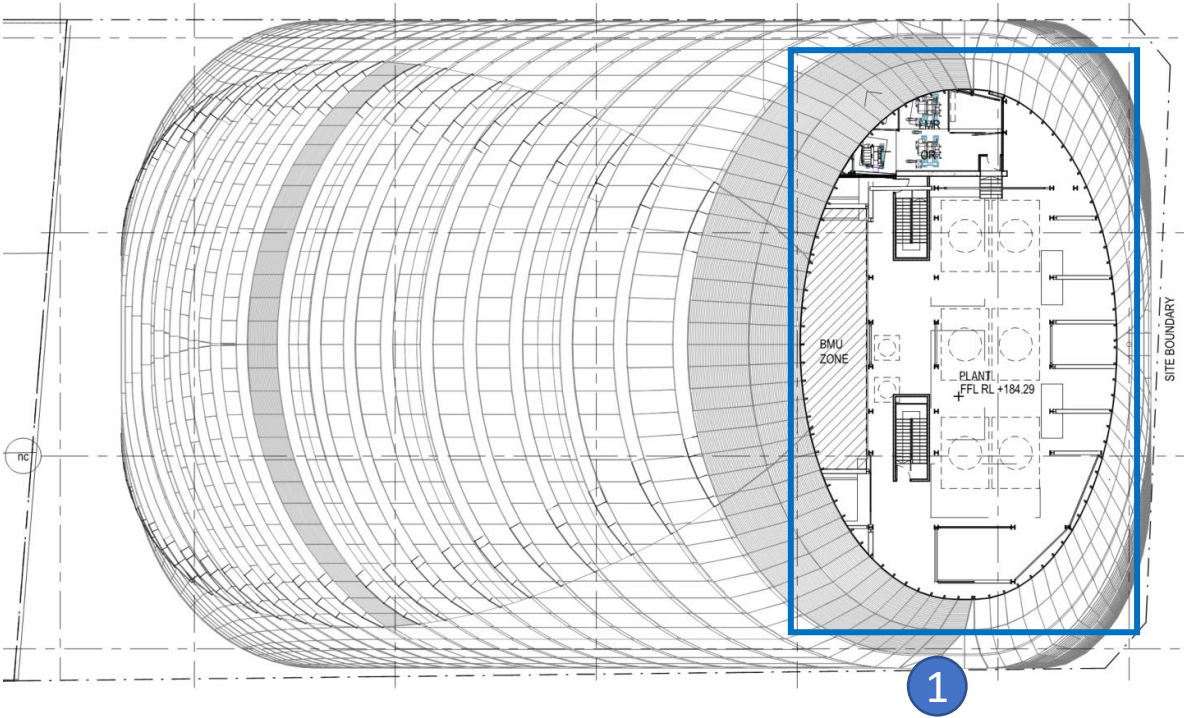
## FC2 Drawing



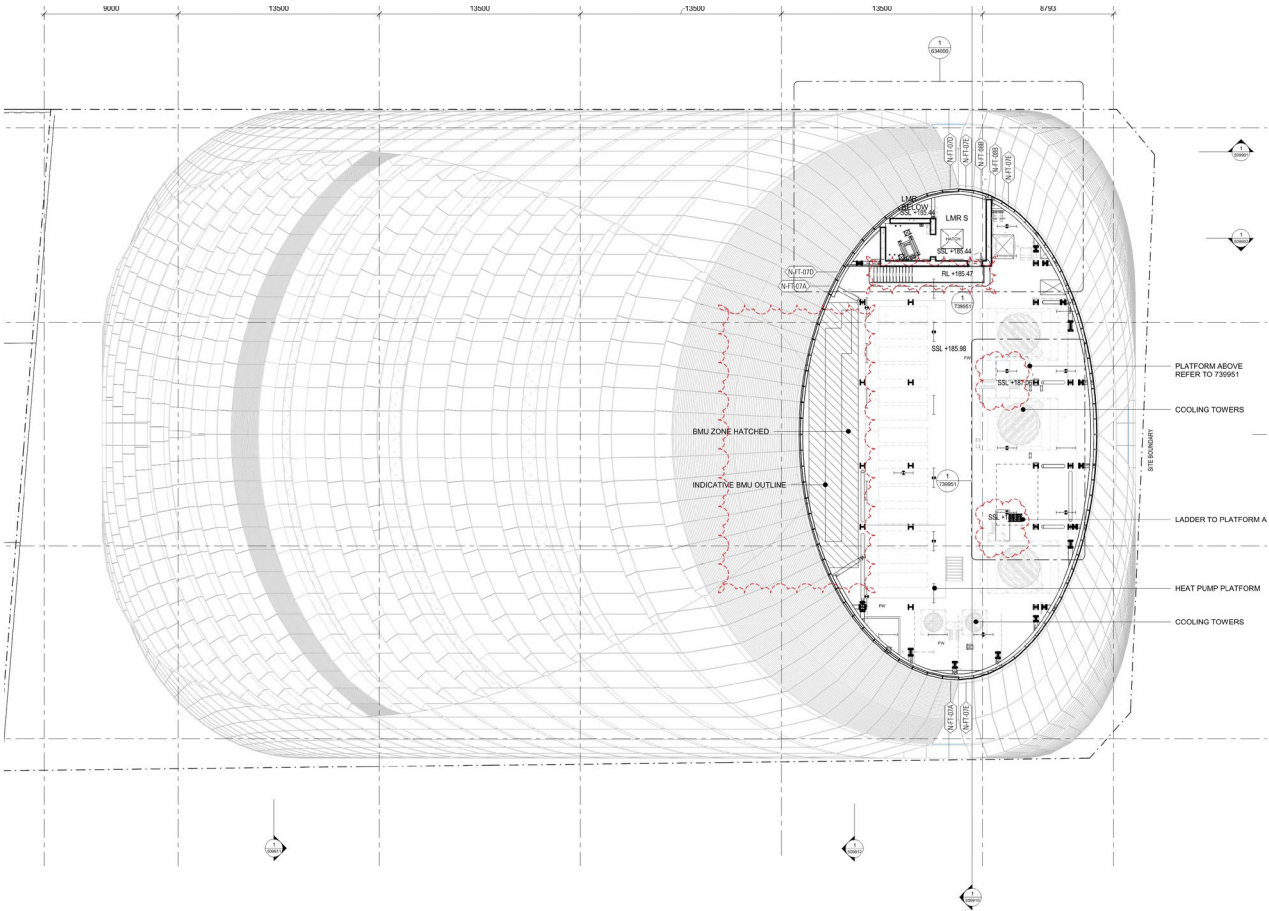
# Upper Roof Plan

SSD 9270 plan with FC2 changes marked up

1. Lowering of floor level FFL



# FC2 Drawing

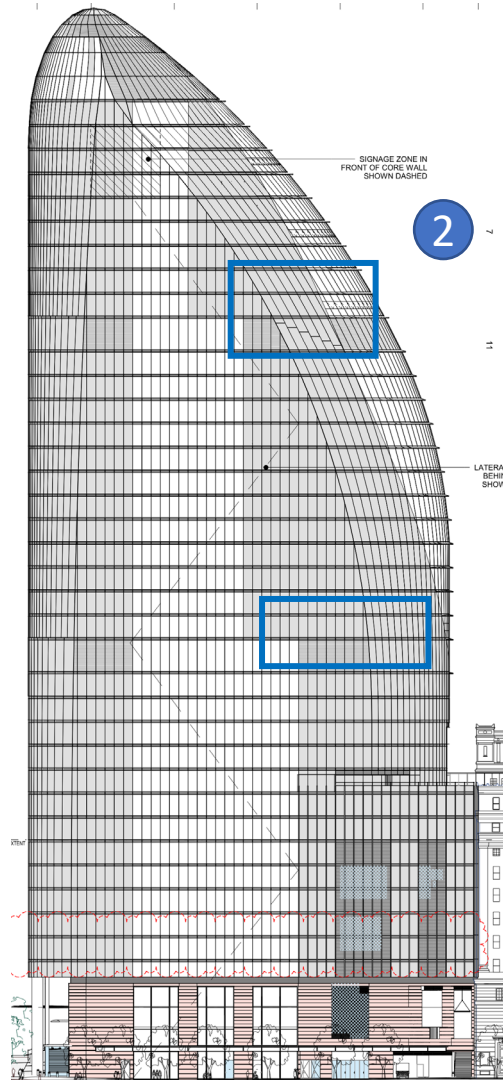




## West Elevation

## MOD 2 Drawing with FC2 changes marked up

1. Increase in louvres on level 15 in lieu of glazing on western facade
2. Increase in louvres on level 28 in lieu of glazing on western facade



## FC2 Drawing

