

Sydney Metro Martin Place

North Tower Base Building Changes

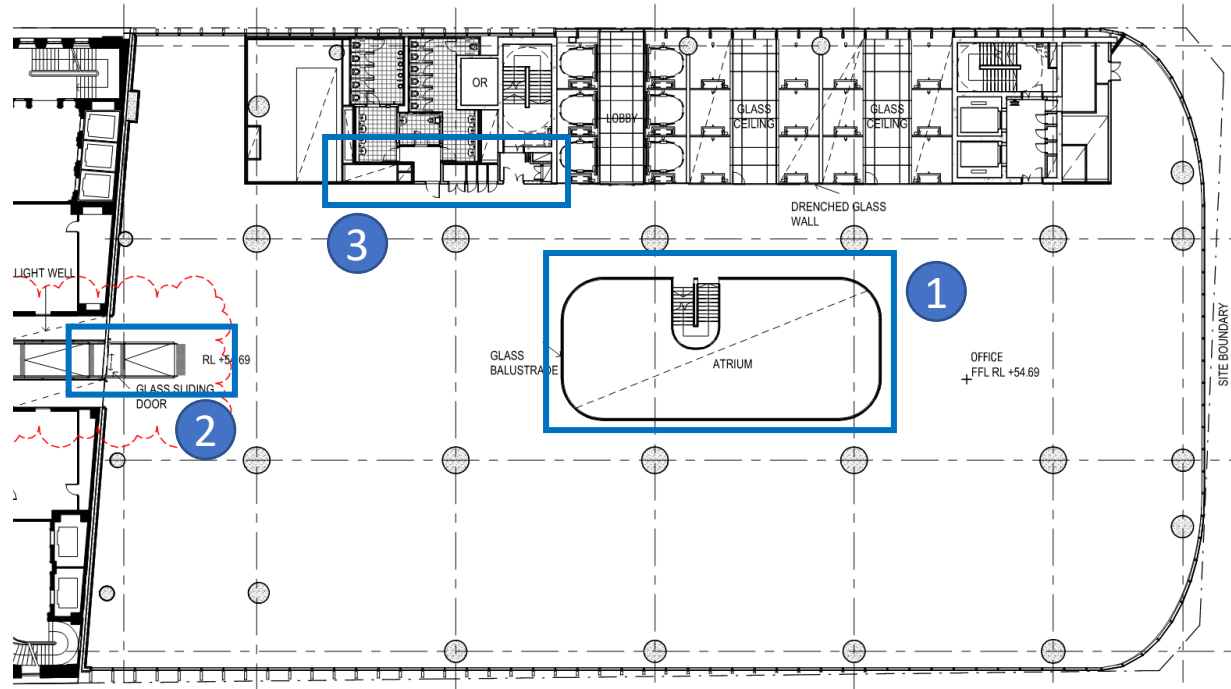
SSD/ MOD drawings & FC2 Comparison

Rev #02 – 26/10/21

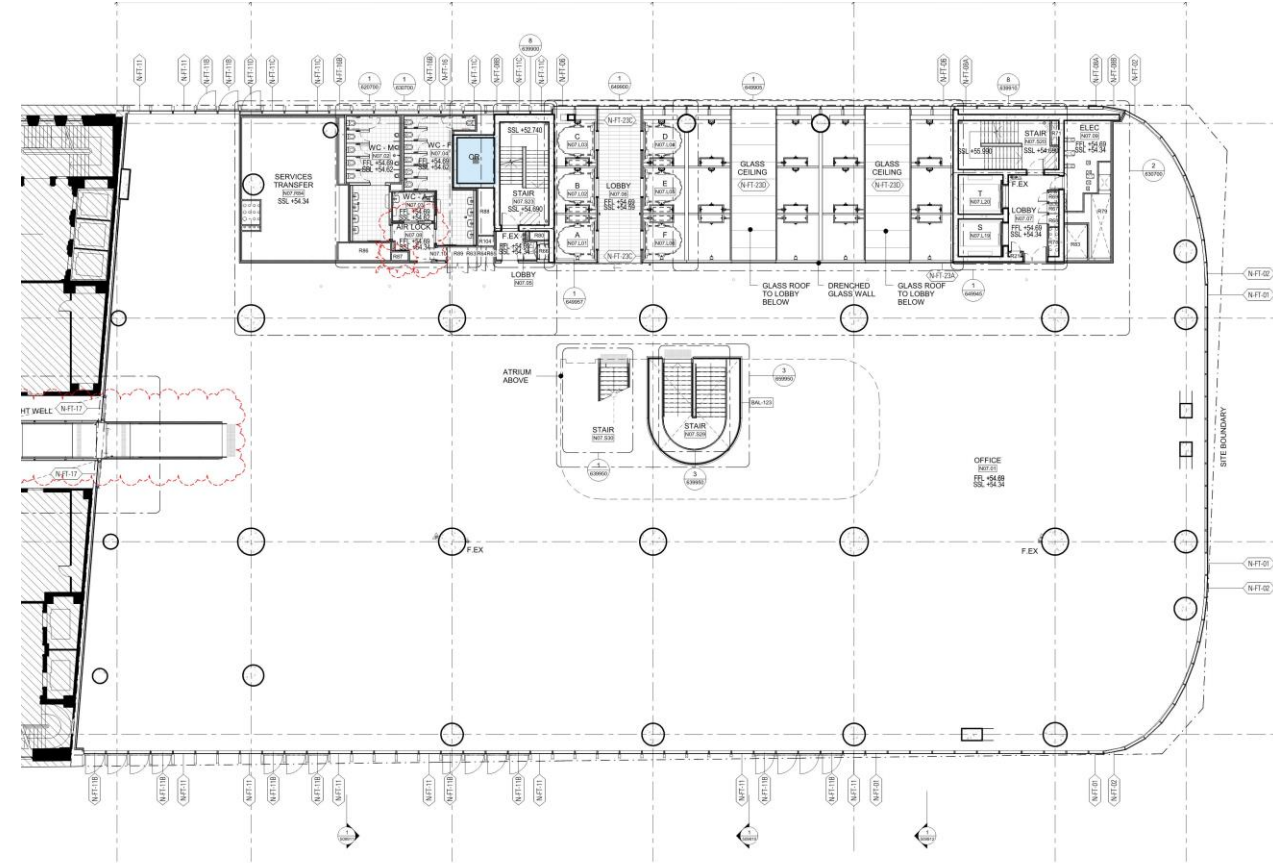


MOD 4 Drawing with FC2 changes marked up

- 1.Stair revised
- 2.Ramp revised
- 3.BOH layout revised



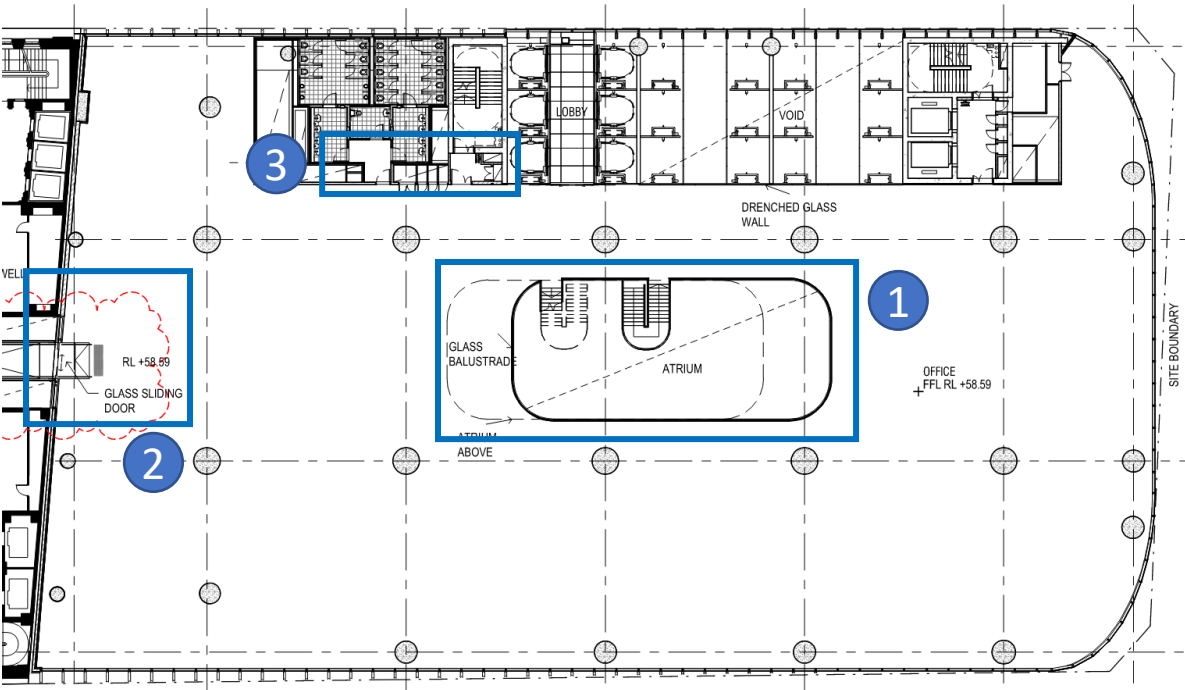
FC2 Drawing



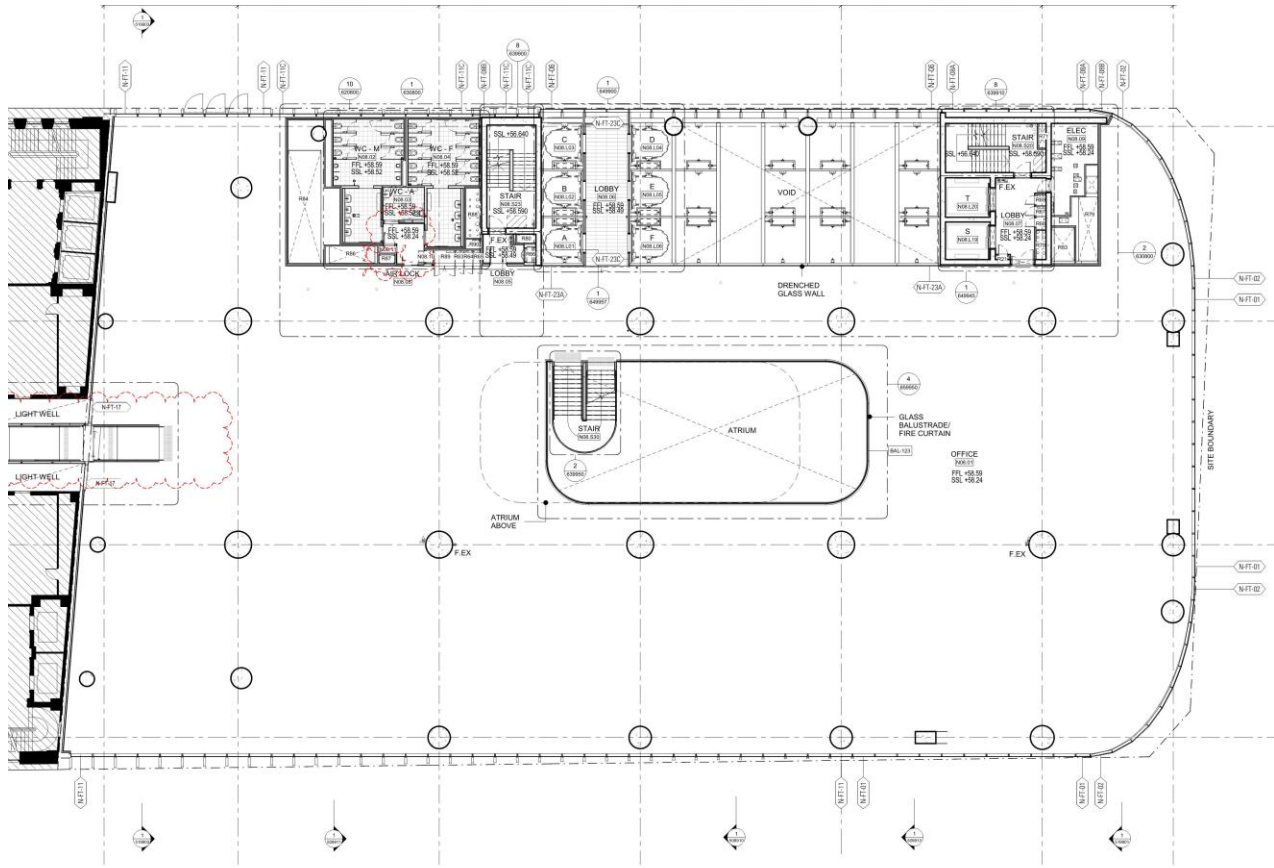
Level 08 Plan

MOD 4 Drawing with FC2 changes marked up

- 1.Stair and atrium revised
- 2.Ramp revised
- 3.BOH layout revised



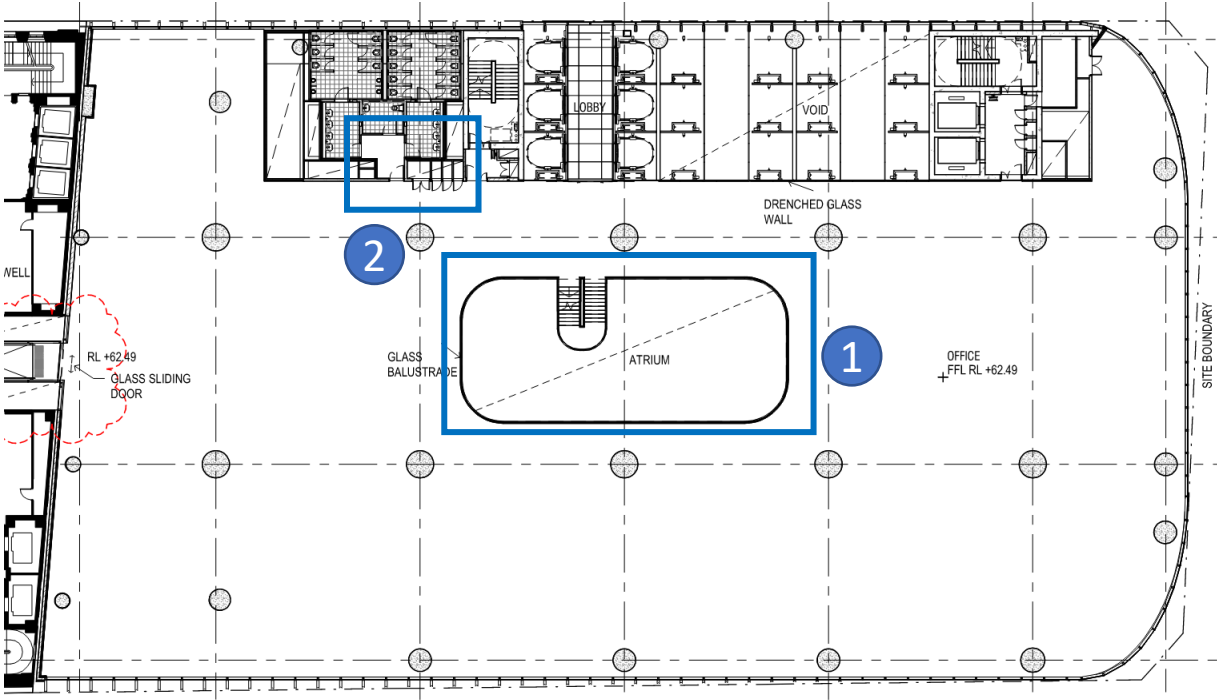
FC2 Drawing



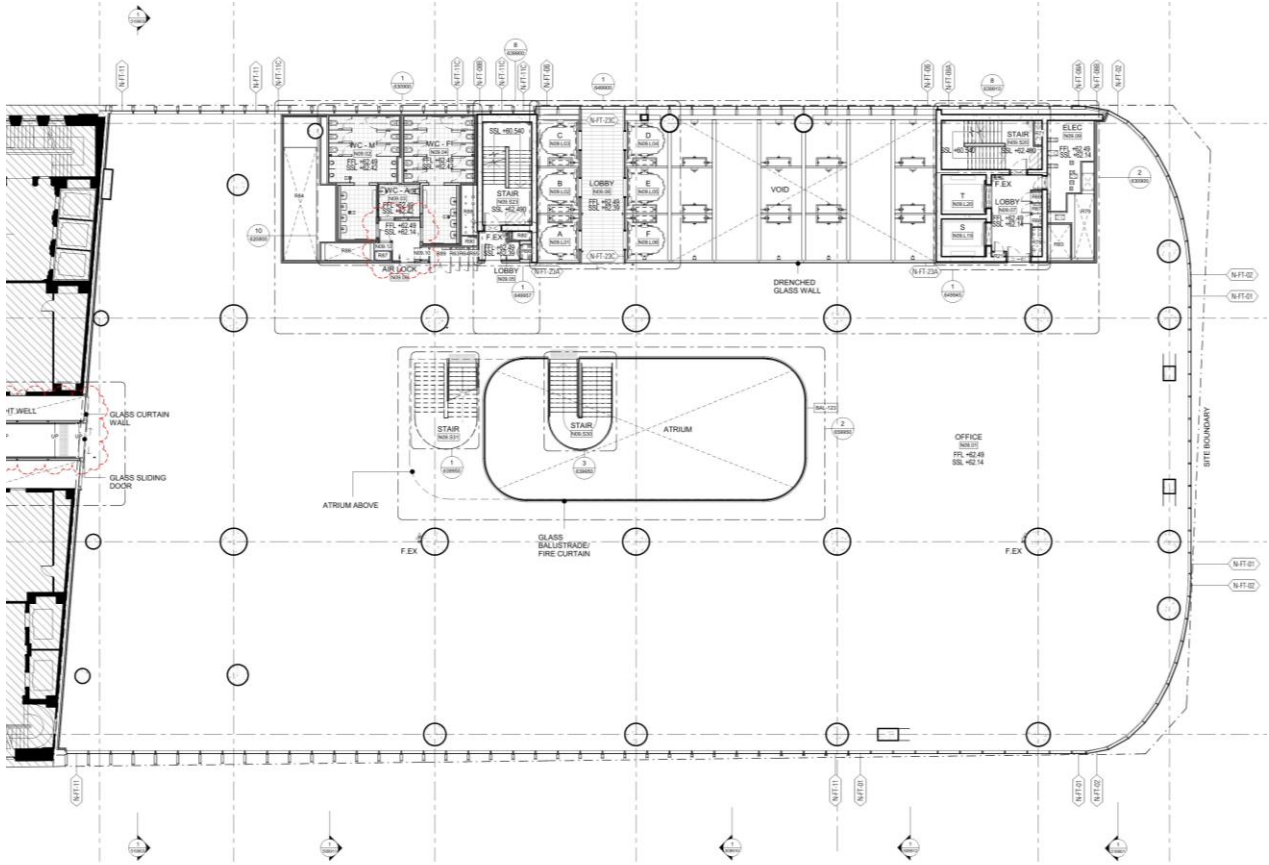
Level 09 Plan

MOD 4 Drawing with FC2 changes marked up

- 1.Stair and atrium revised
- 2.BOH layout revised



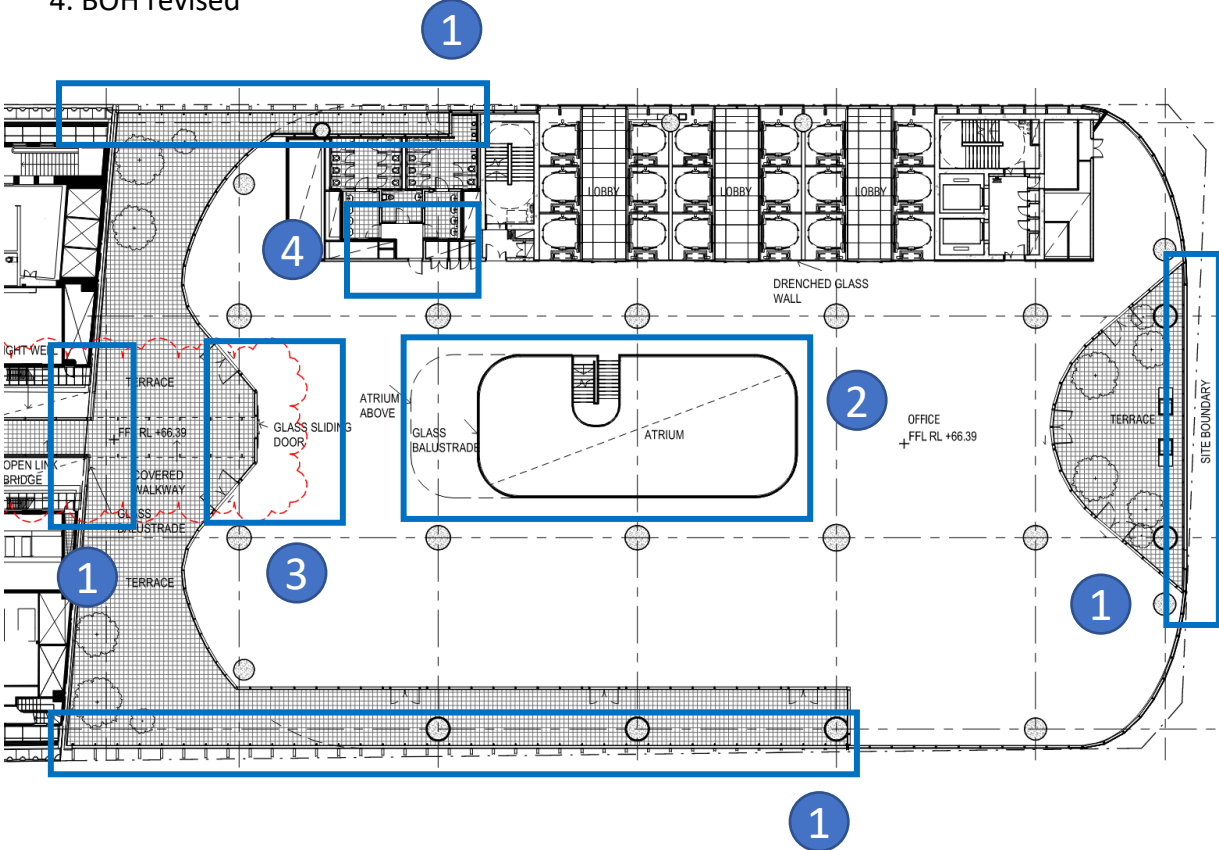
FC2 Drawing



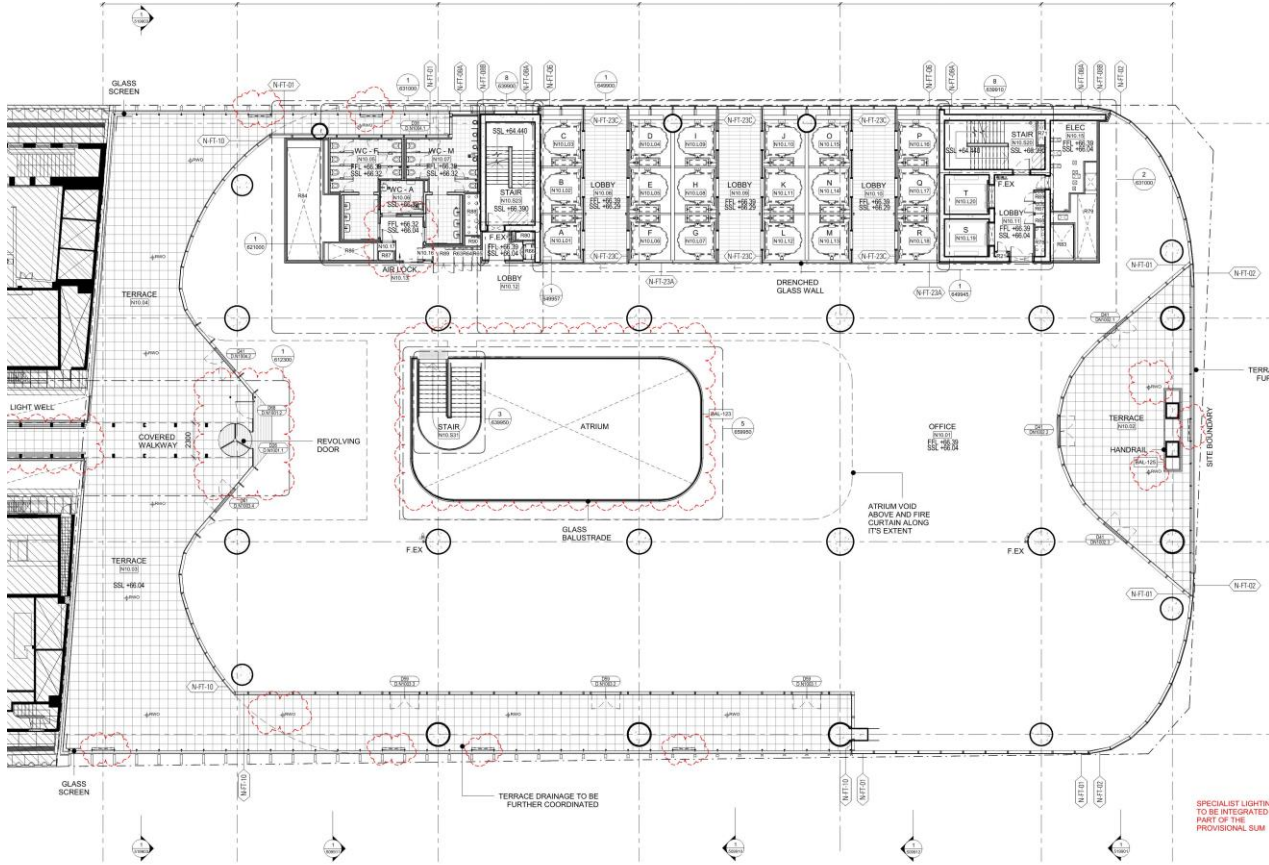
Level 10 Plan

MOD 4 Drawing with FC2 changes marked up

- 1. Balustrade height increased from 1375mm to 1800mm - Change from handrail design to Glazing
- 2. Atrium position changed
- 3. Sliding door replaced by revolving door
- 4. BOH revised



FC2 Drawing



Level 10 Plan

MOD4 Drawing with FC2 changes marked up

Level 10 External Balustrade Height Increase

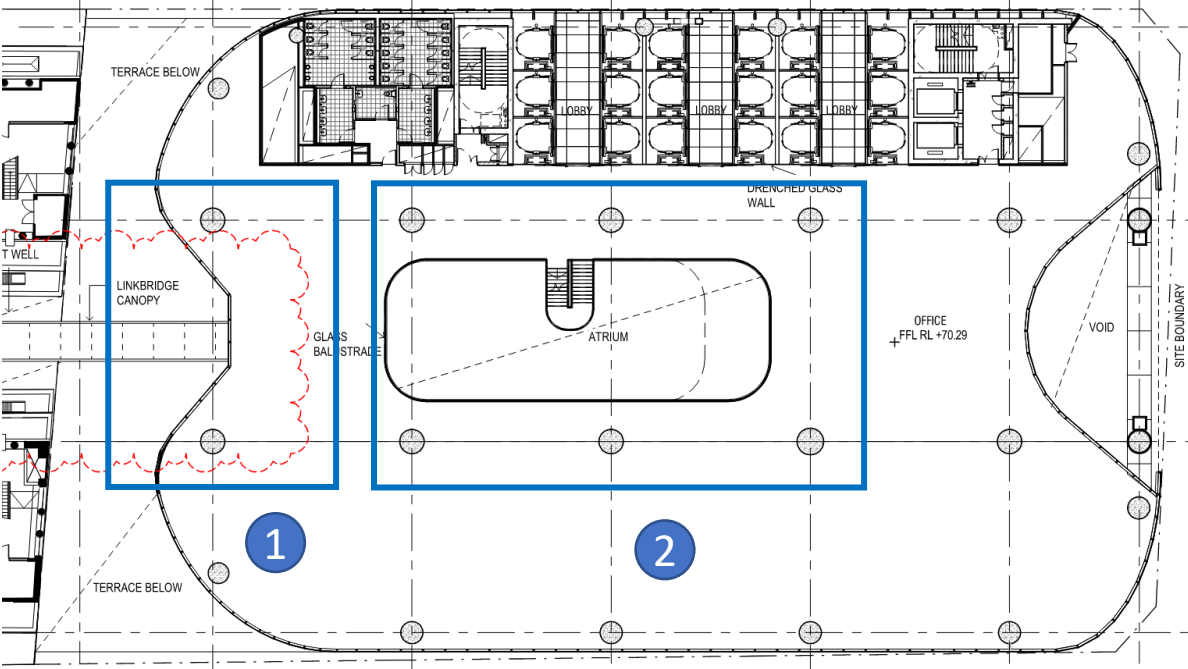
- The external balustrades at Level 10 have increased in height from **1375mm** to **1800mm**
- Because the change is predominantly additional frameless glazing it is unlikely that there would be any visual impact for external receivers.



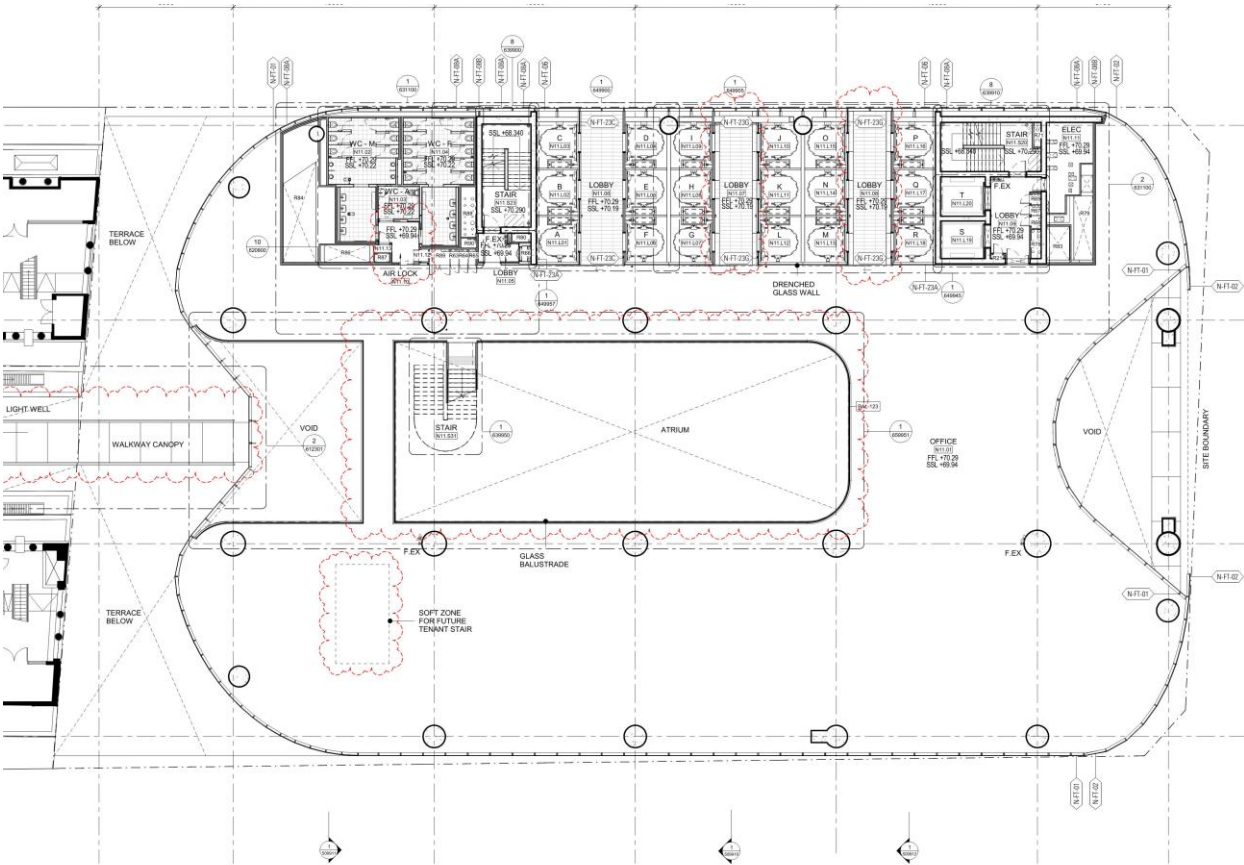
Level 11 Plan

MOD 4 Drawing with FC2 changes marked up

- 1.Internal voids added
- 2.Atrium and stair revised



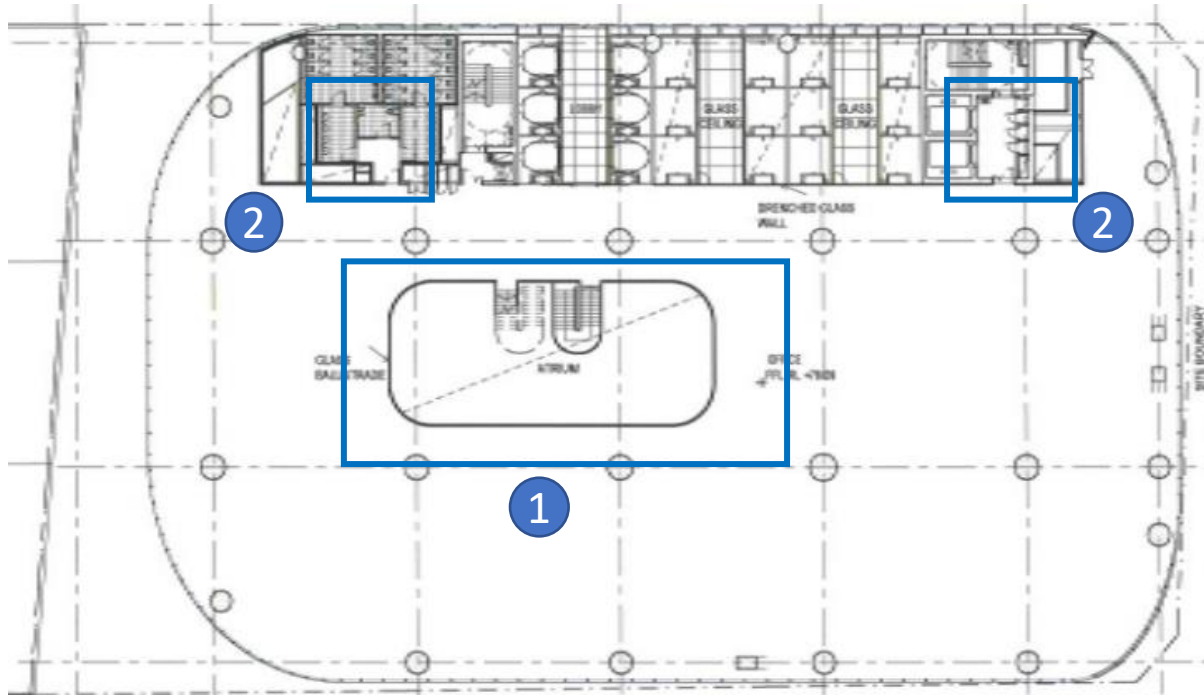
FC2 Drawing



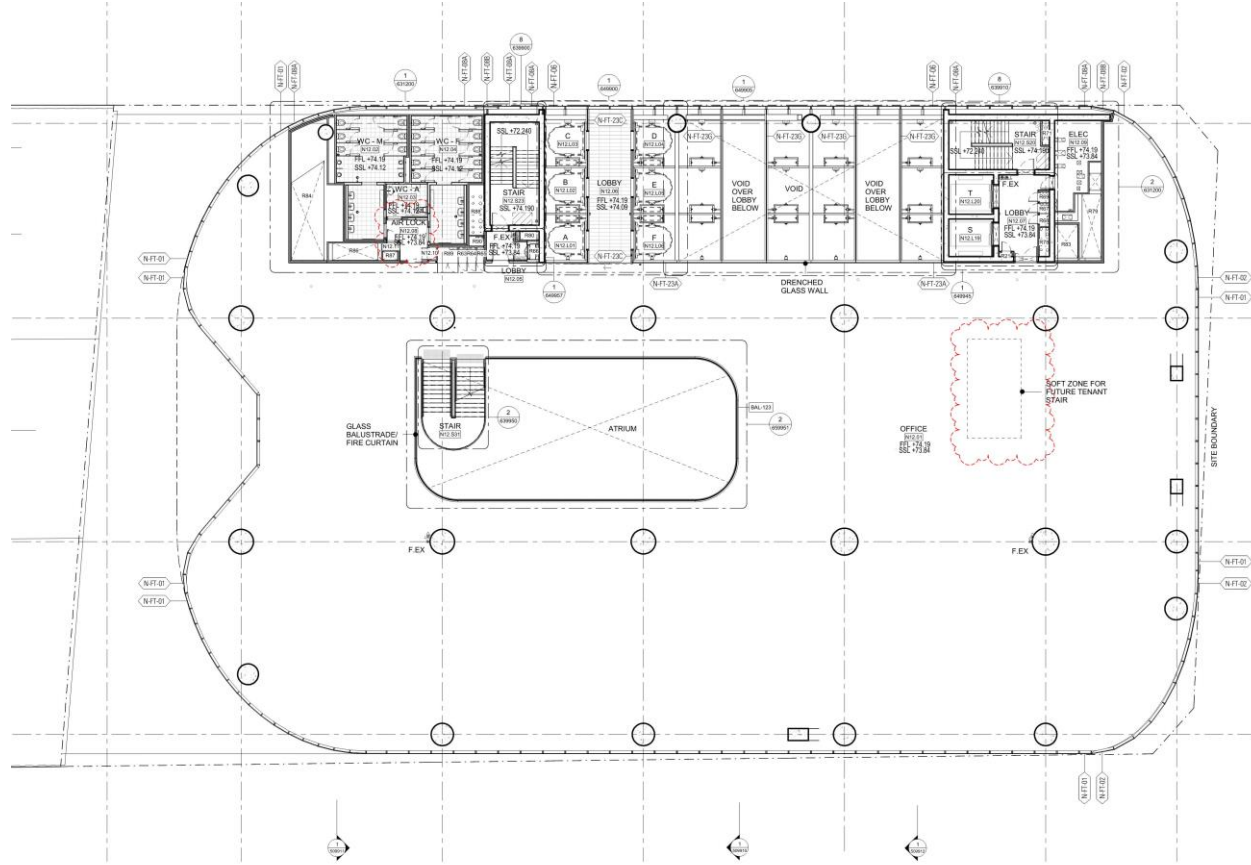
Level 12 Plan

SSD 9270 Plan with FC2 changes marked up

- 1.Atrium and stair revised
- 2.BOH layout revised



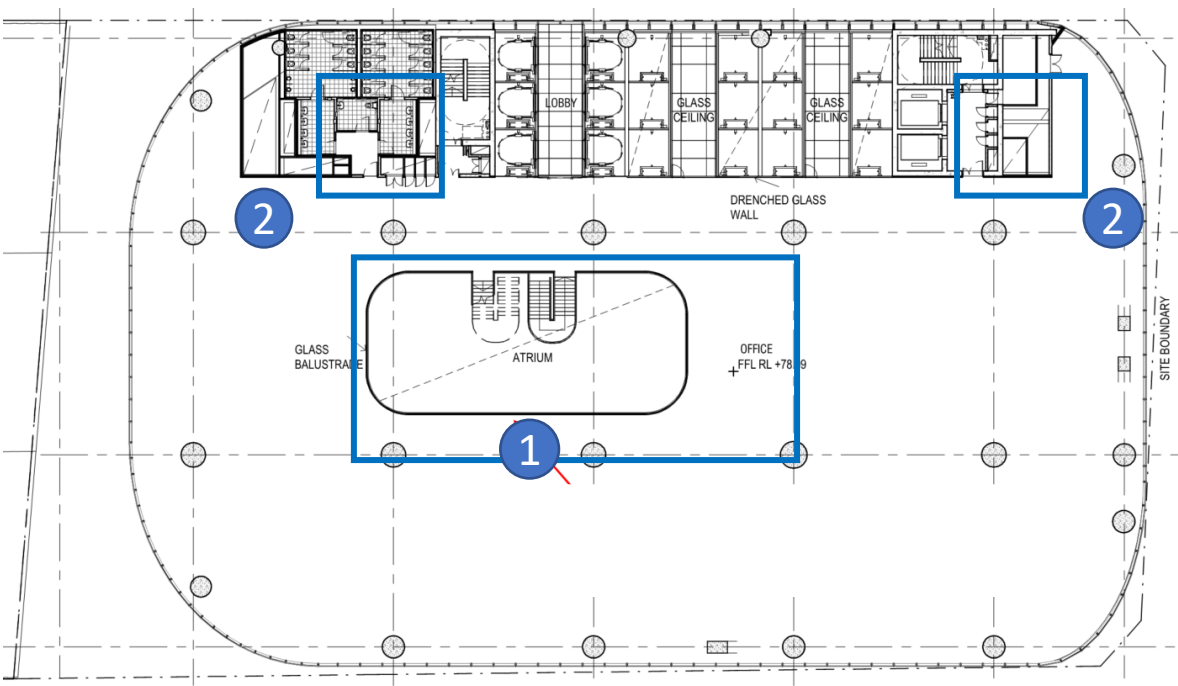
FC2 Drawing



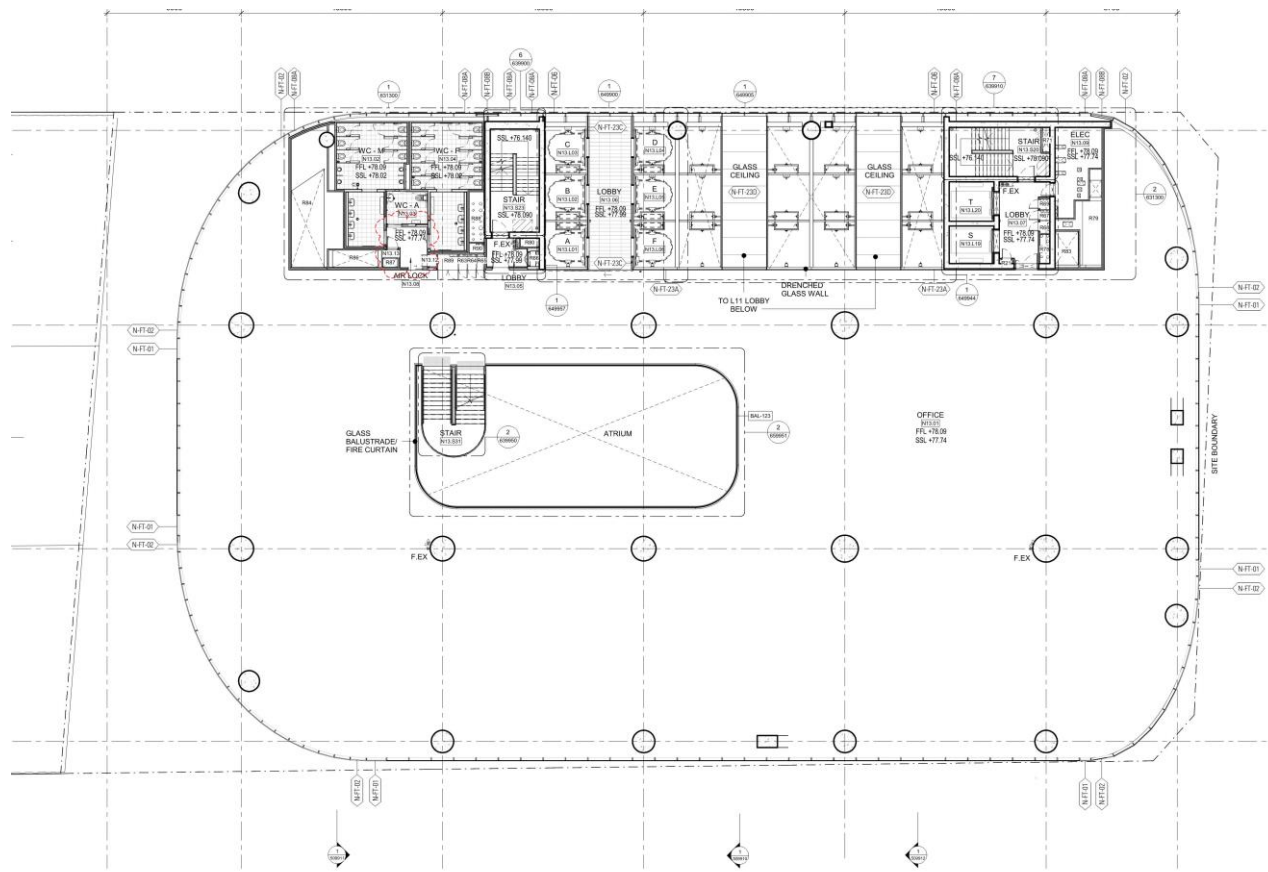
Level 13 Plan

SSD 9270 Plan with FC2 changes marked up

- 1.Atrium and stair revised
- 2.BOH layout revised



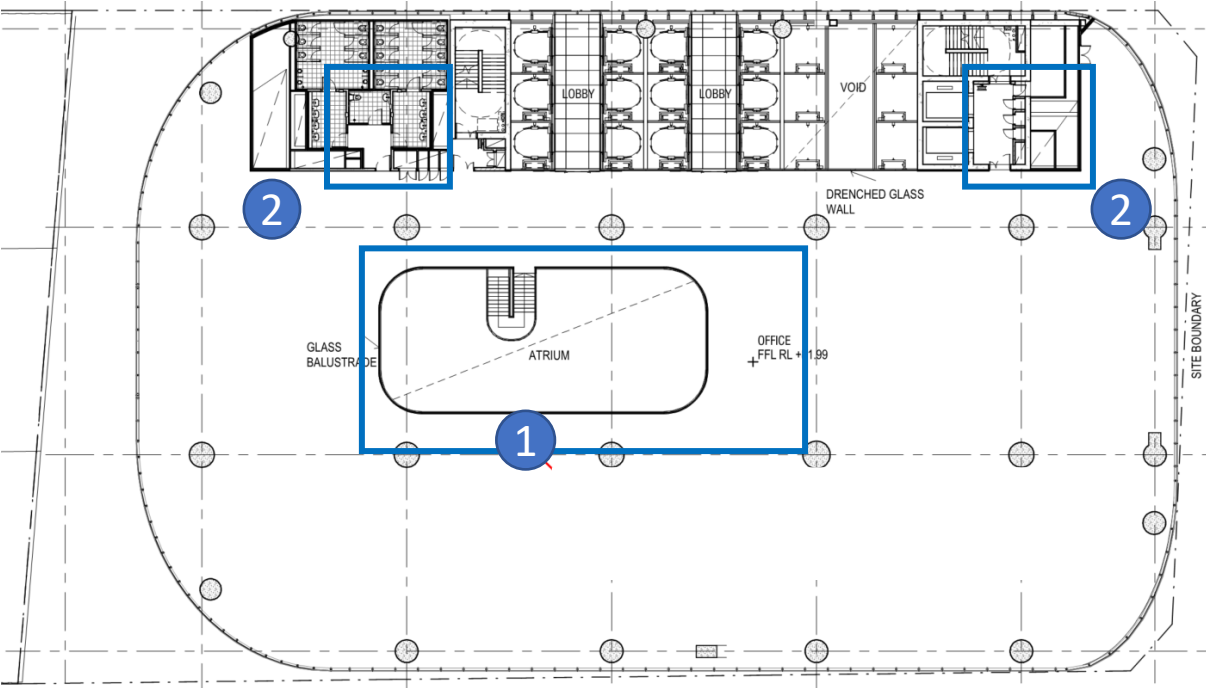
FC2 Drawing



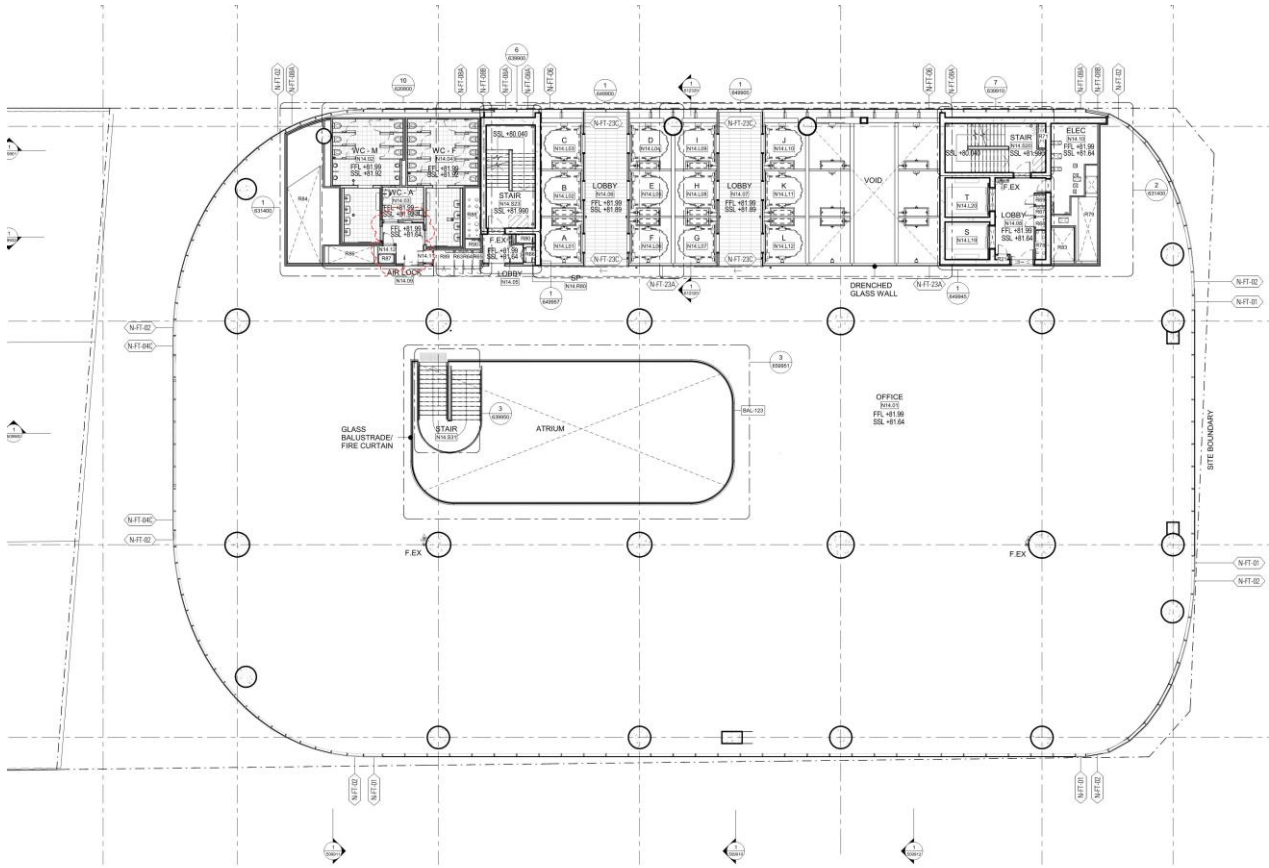
Level 14 Plan

SSD 9270 Plan with FC2 changes marked up

- 1.Atrium and stair revised
- 2.BOH layout revised



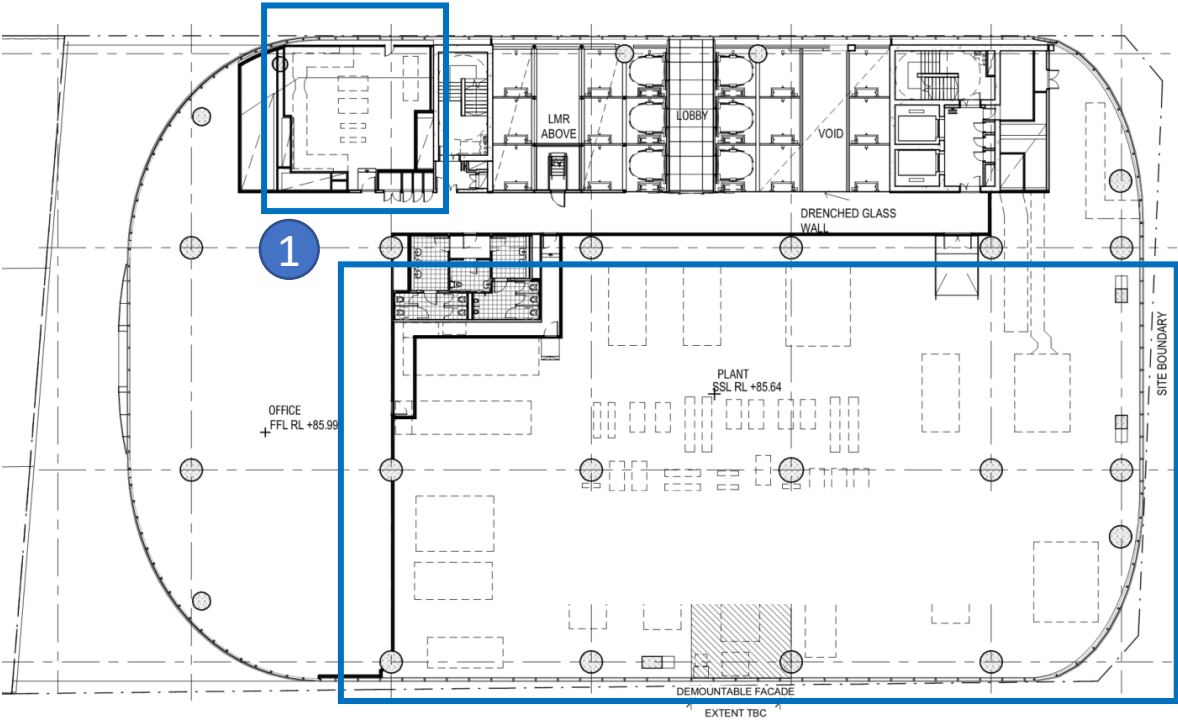
FC2 Drawing



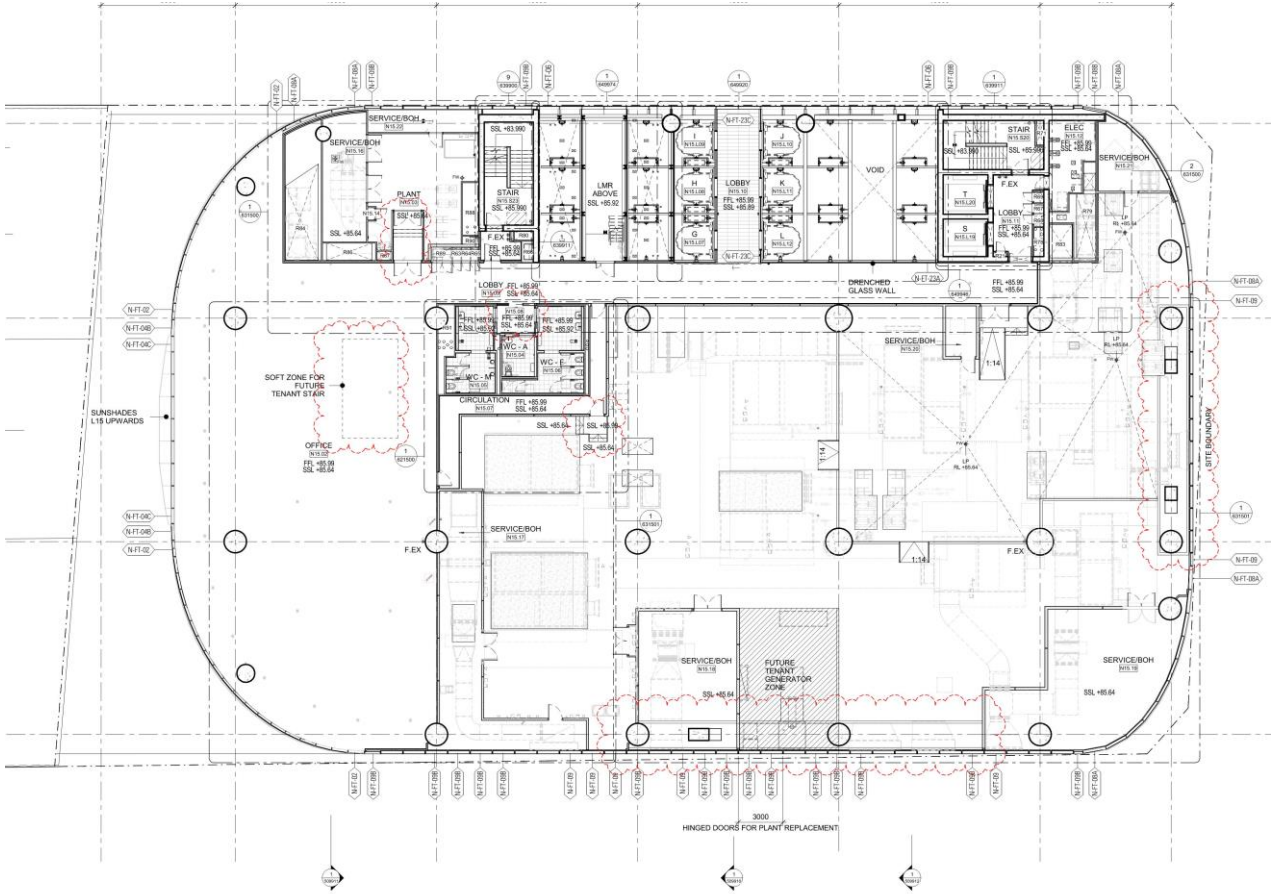
Level 15 Plan

SSD 9270 Plan with FC2 changes marked up

1.BOH layout revised



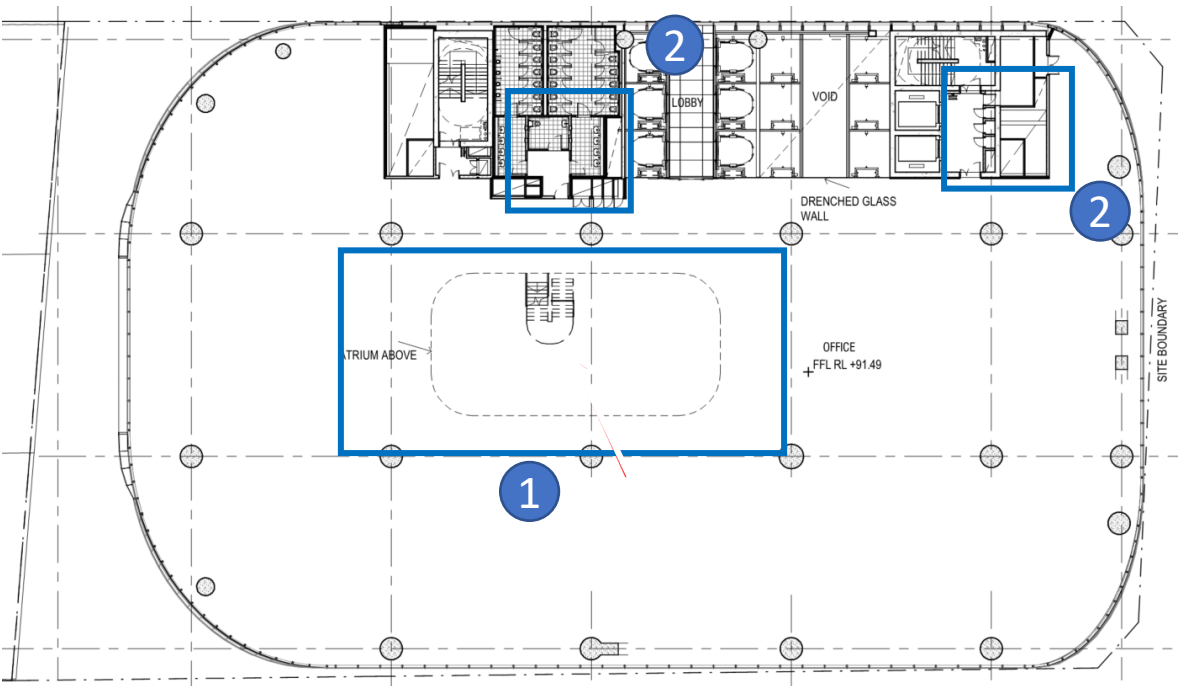
FC2 Drawing



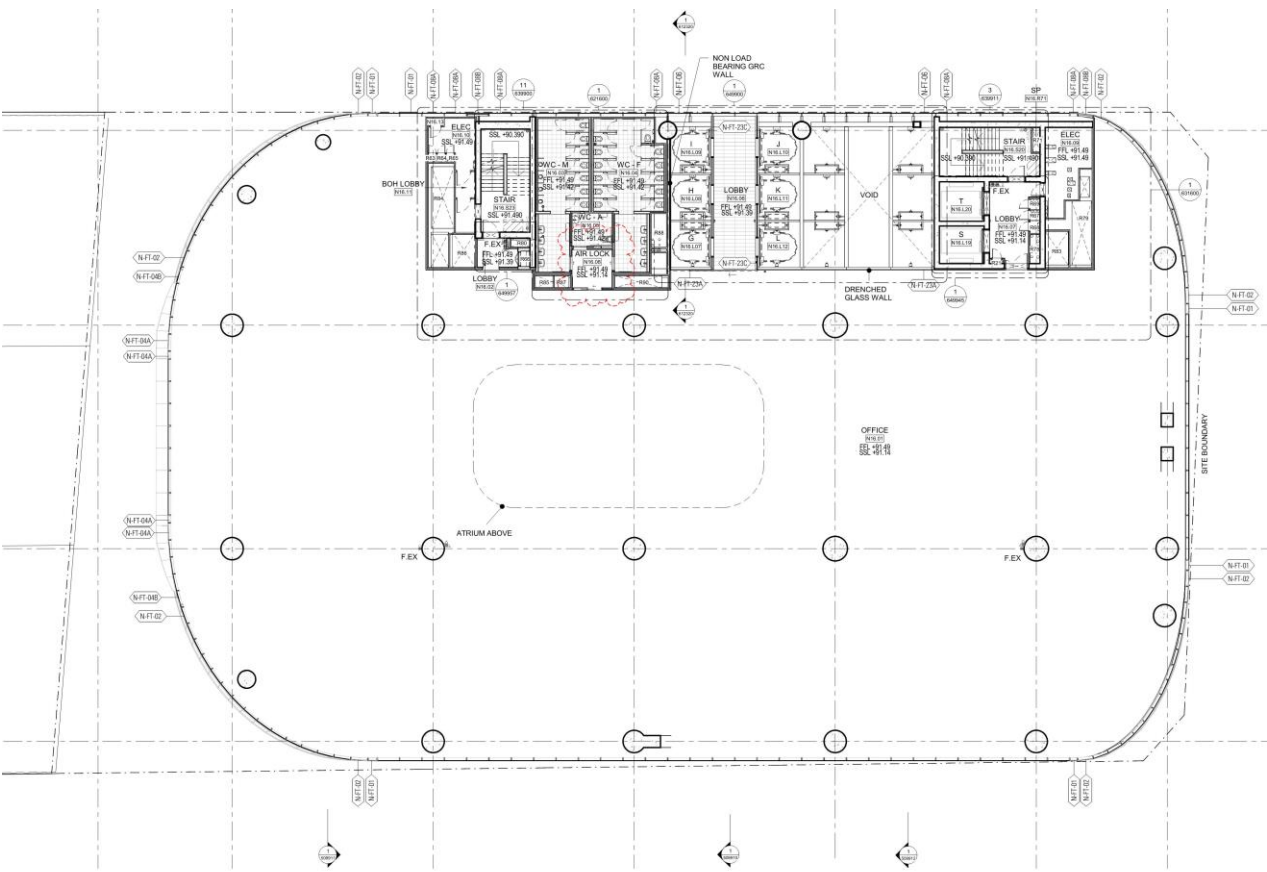
Level 16 Plan

SSD 9270 Plan with FC2 changes marked up

- 1.Atrium and stair revised
- 2.BOH layout revised



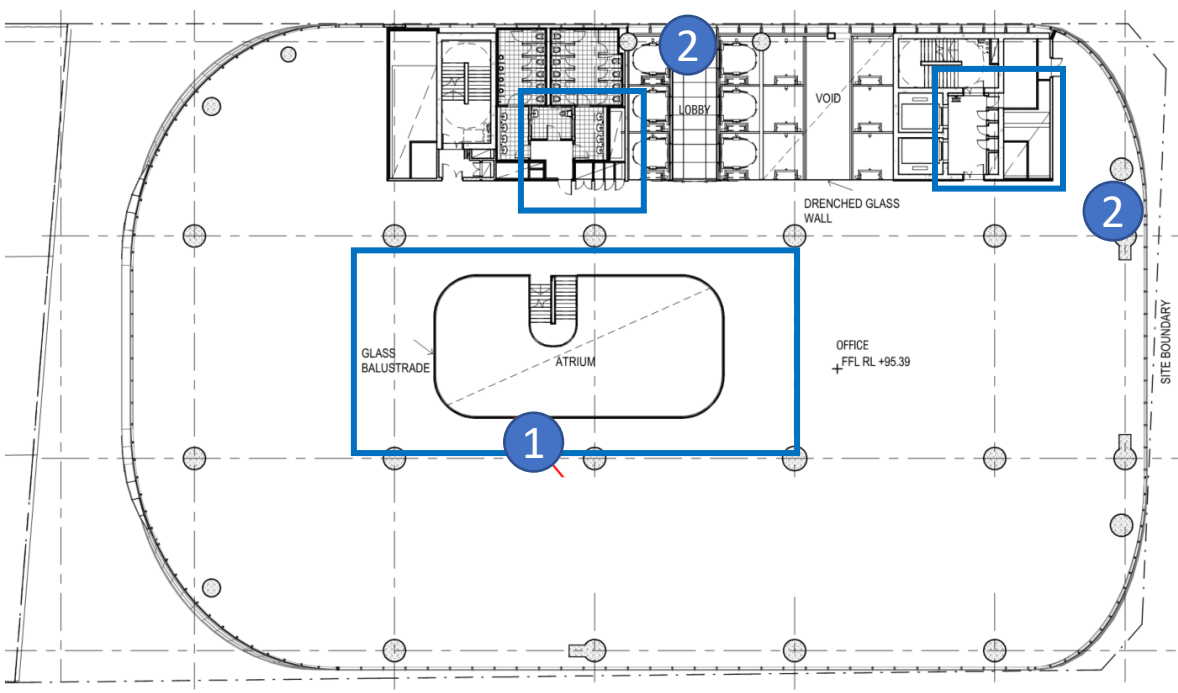
FC2 Drawing



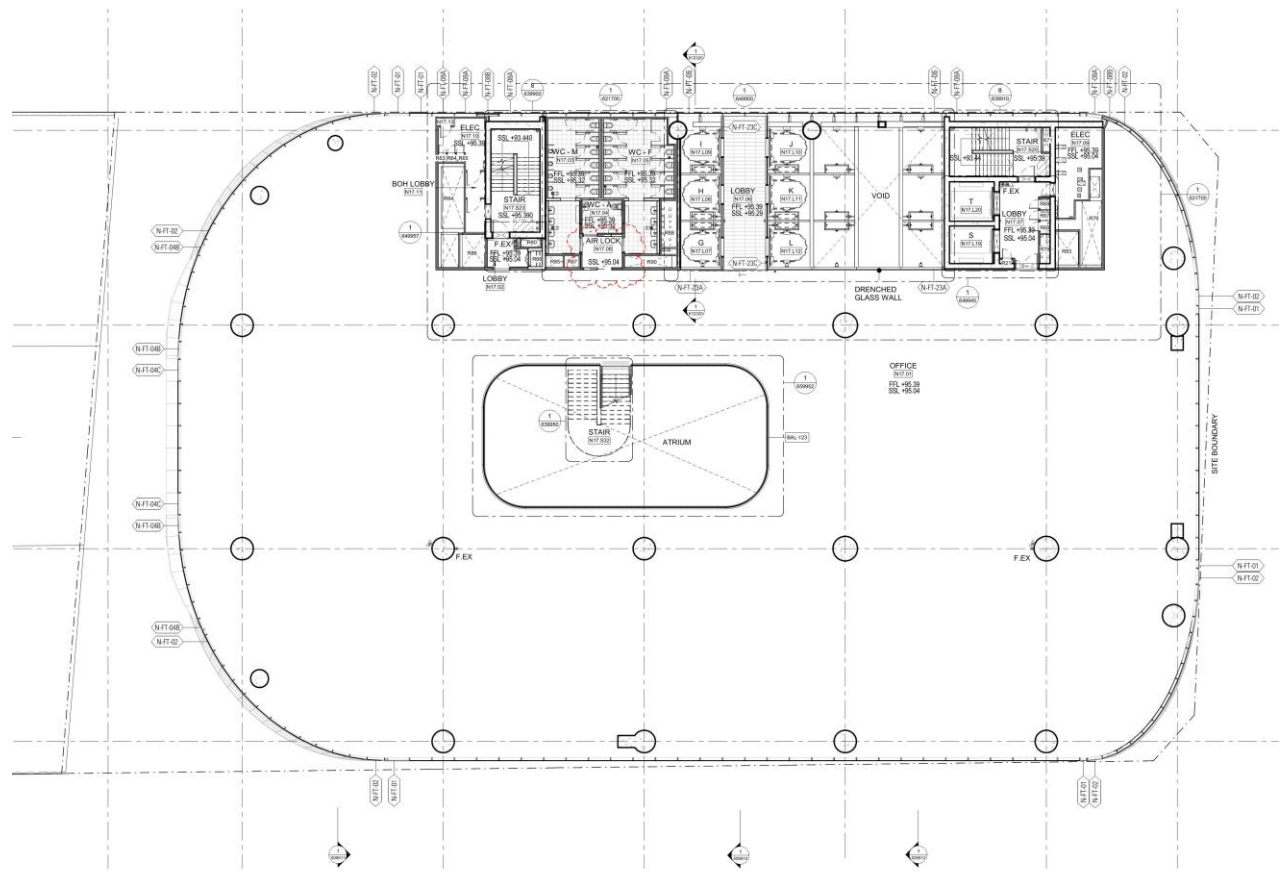
Level 17 Plan

SSD 9270 Plan with FC2 changes marked up

- 1.Atrium and stair revised
- 2.BOH layout revised



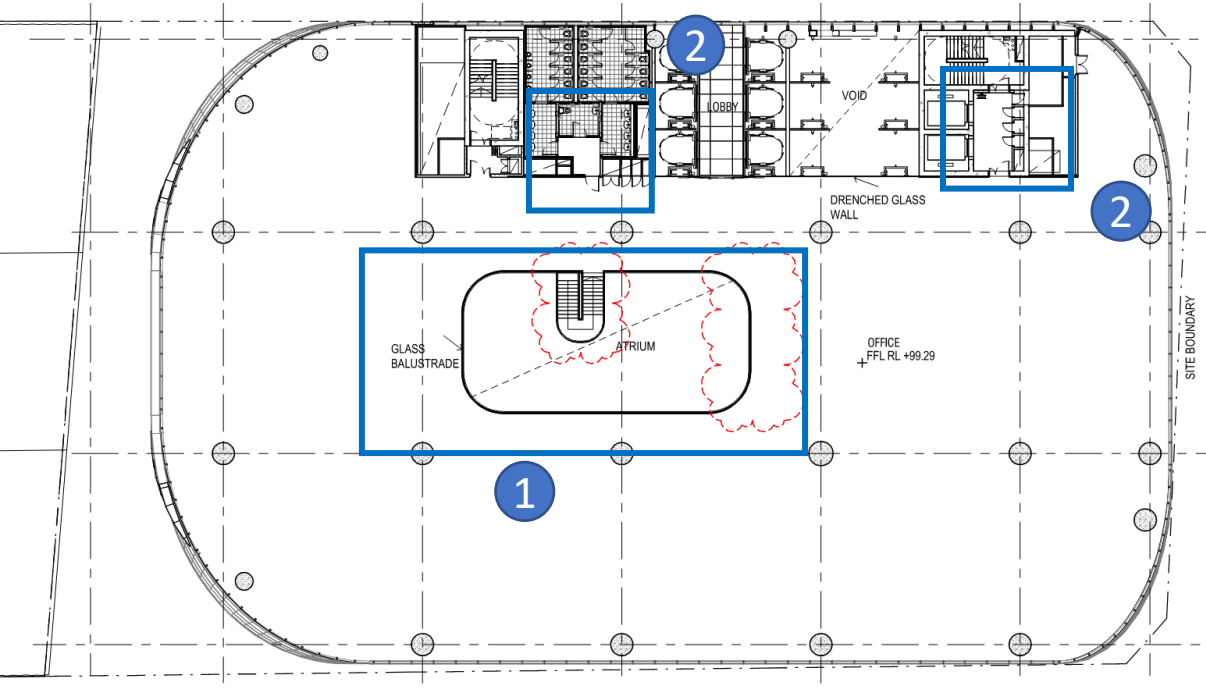
FC2 Drawing



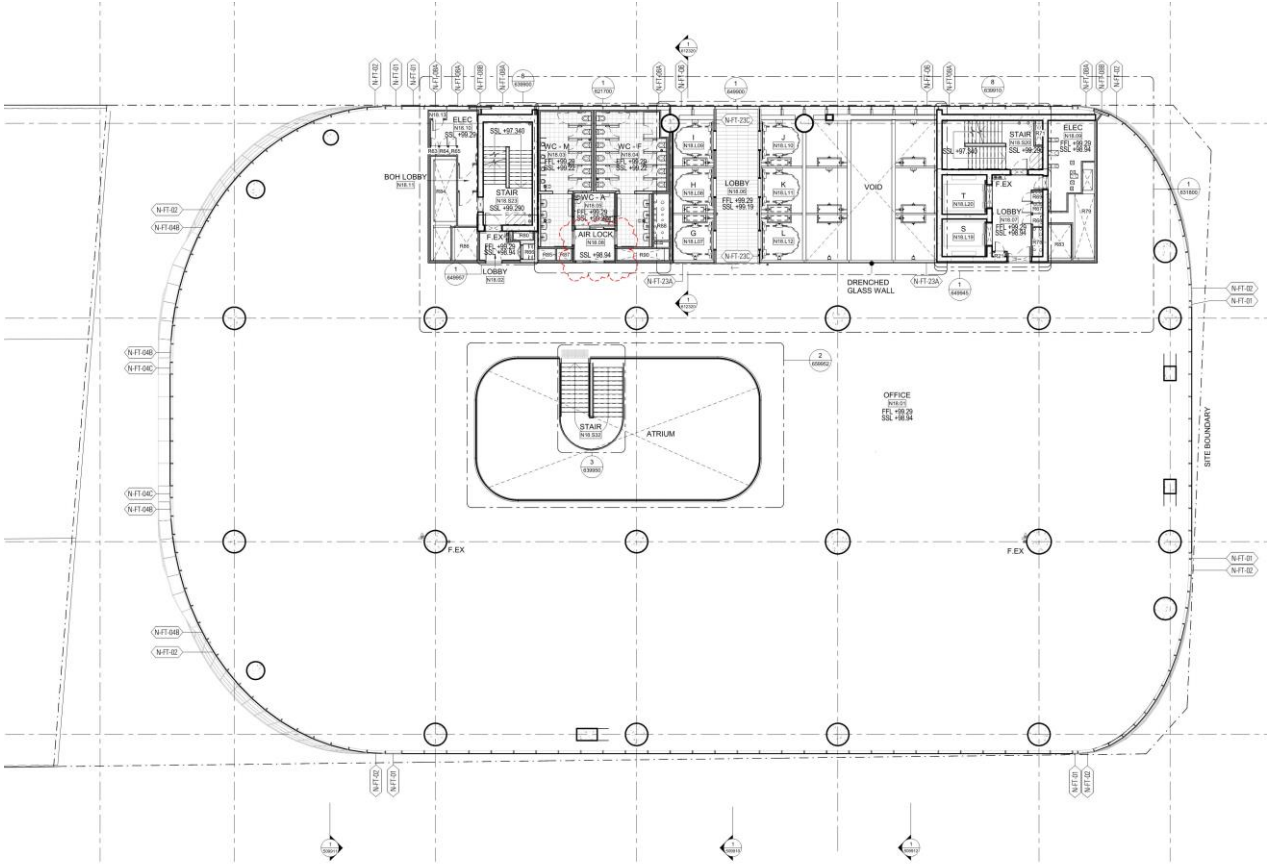
Level 18 Plan

MOD 5 plan with FC2 changes marked up

- 1.Atrium and stair revised
- 2.BOH layout revised



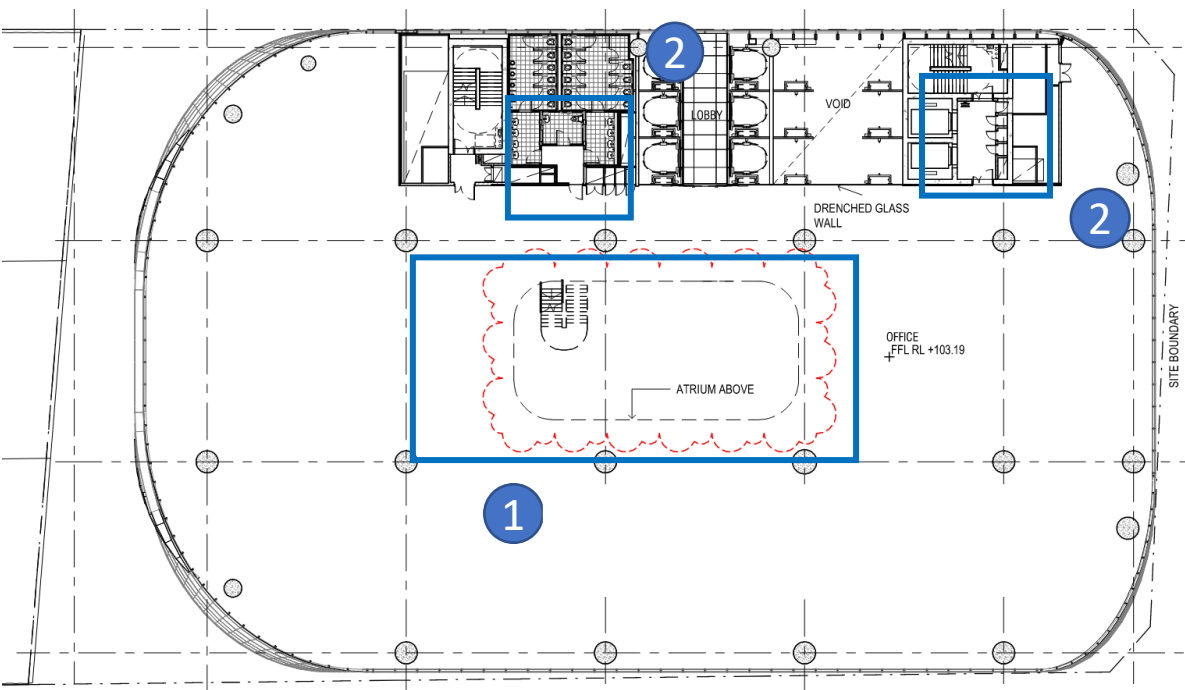
FC2 Drawing



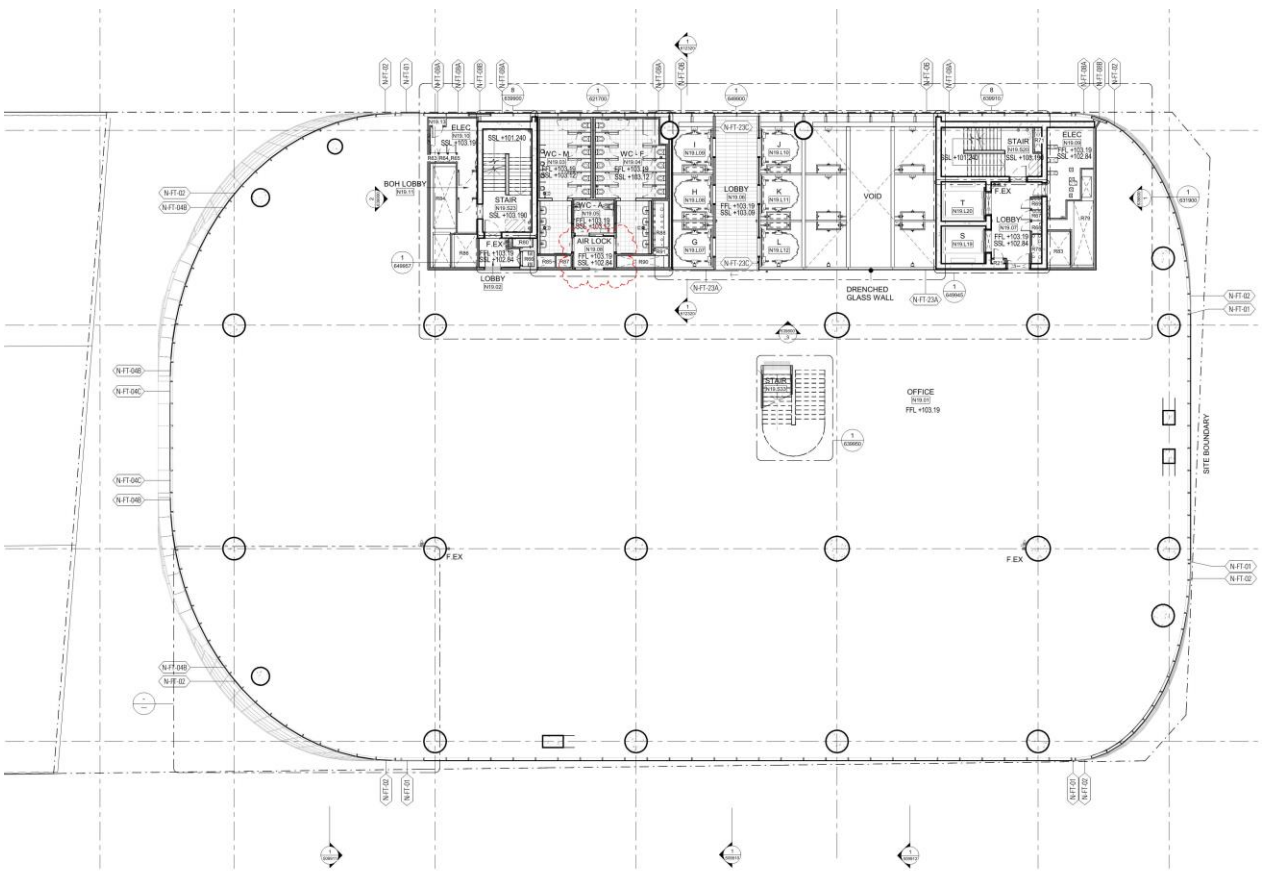
Level 19 Plan

MOD 5 plan with FC2 changes marked up

- 1.Atrium and stair revised
- 2.BOH layout revised



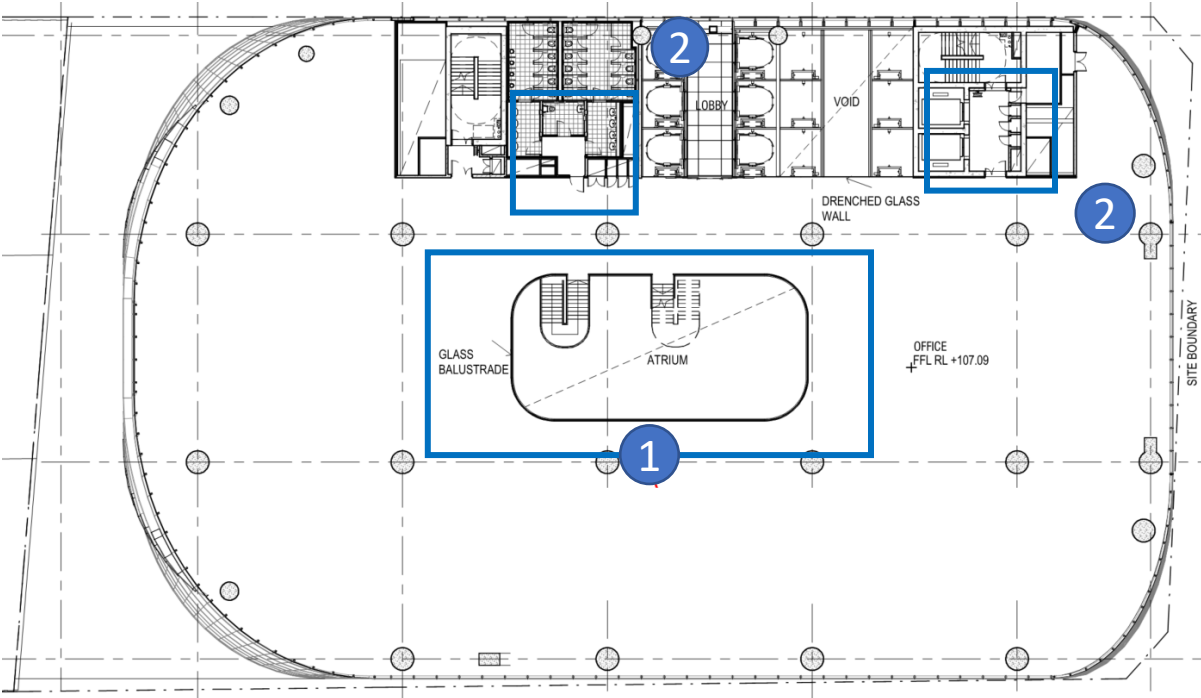
FC2 Drawing



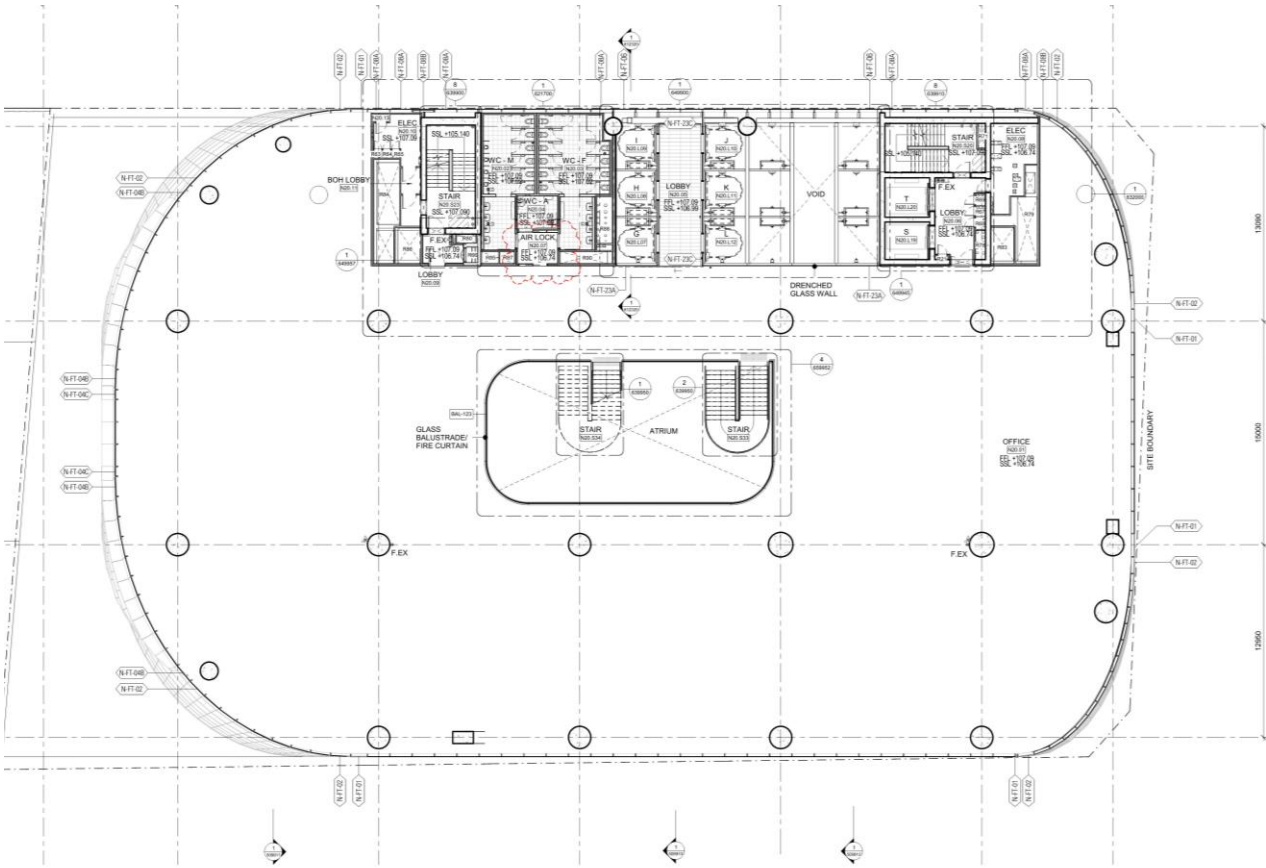
Level 20 Plan

SSD 9270 Plan with FC2 changes marked up

- 1.Atrium and stair revised
- 2.BOH layout revised



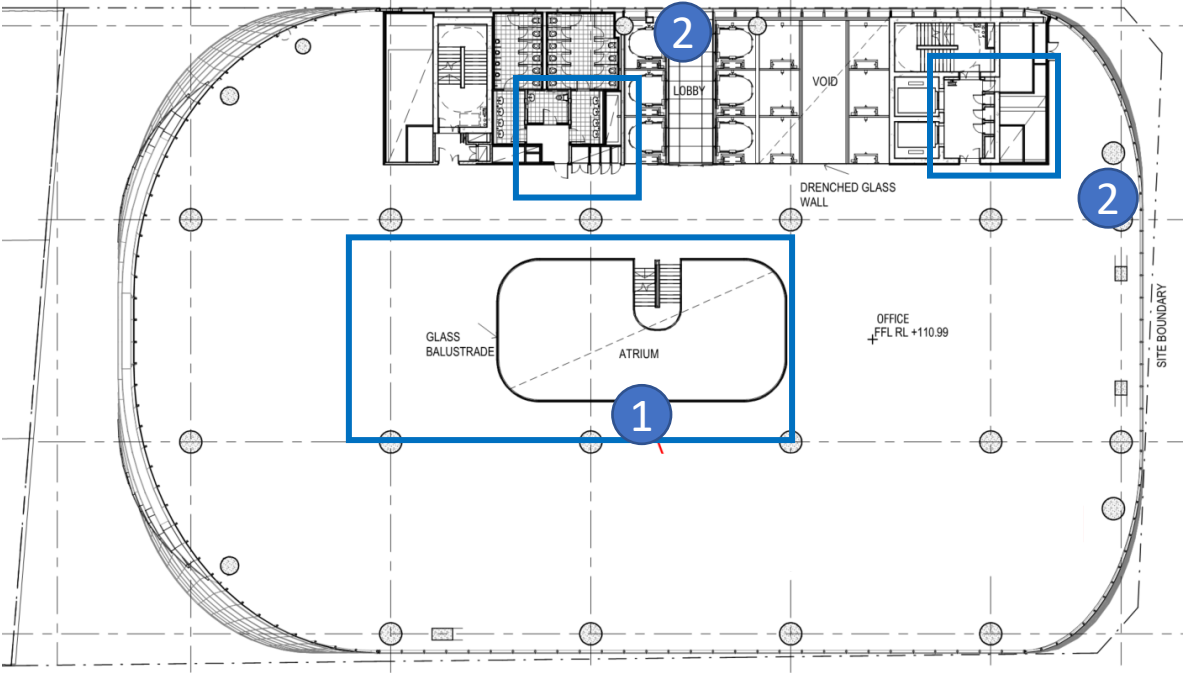
FC2 Drawing



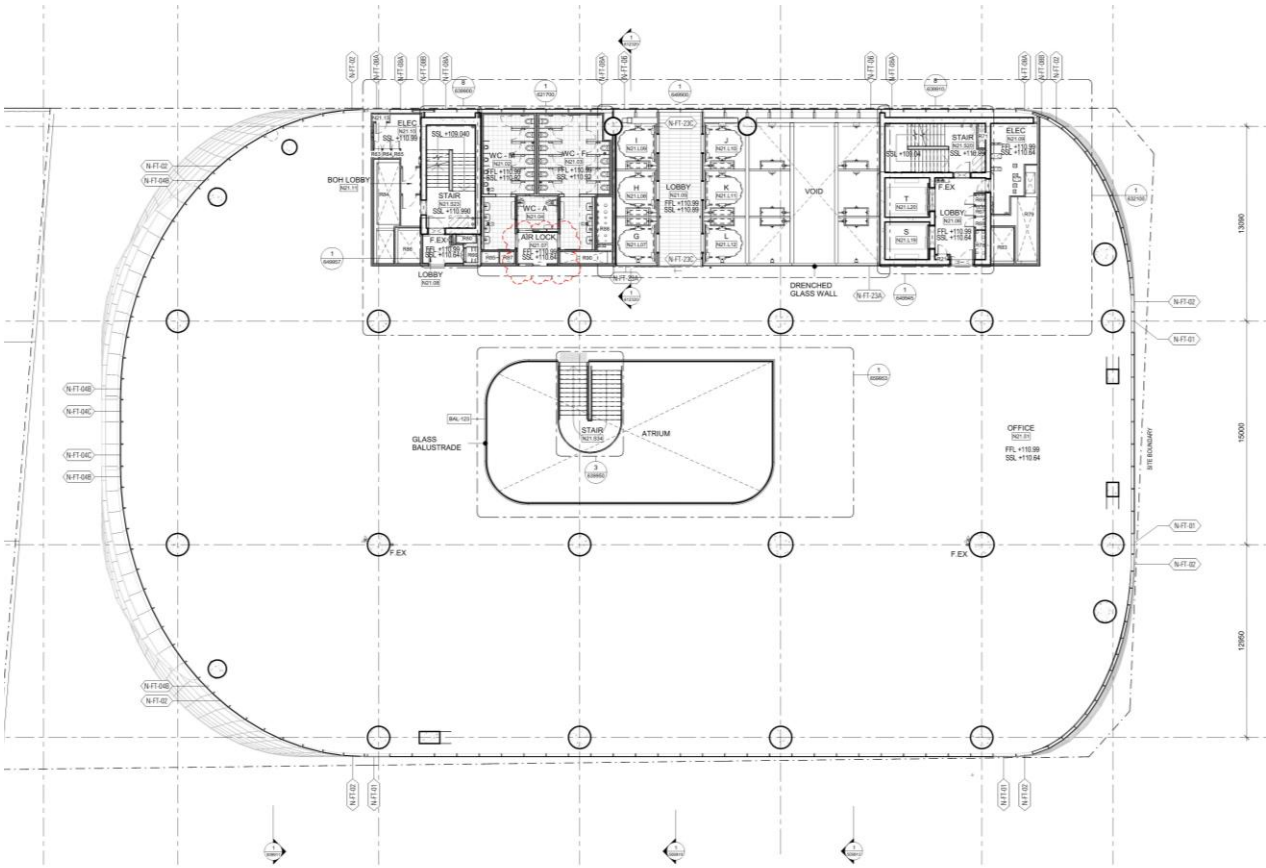
Level 21 Plan

MOD 5 plan with FC2 changes marked up

- 1.Atrium and stair revised
- 2.BOH layout revised



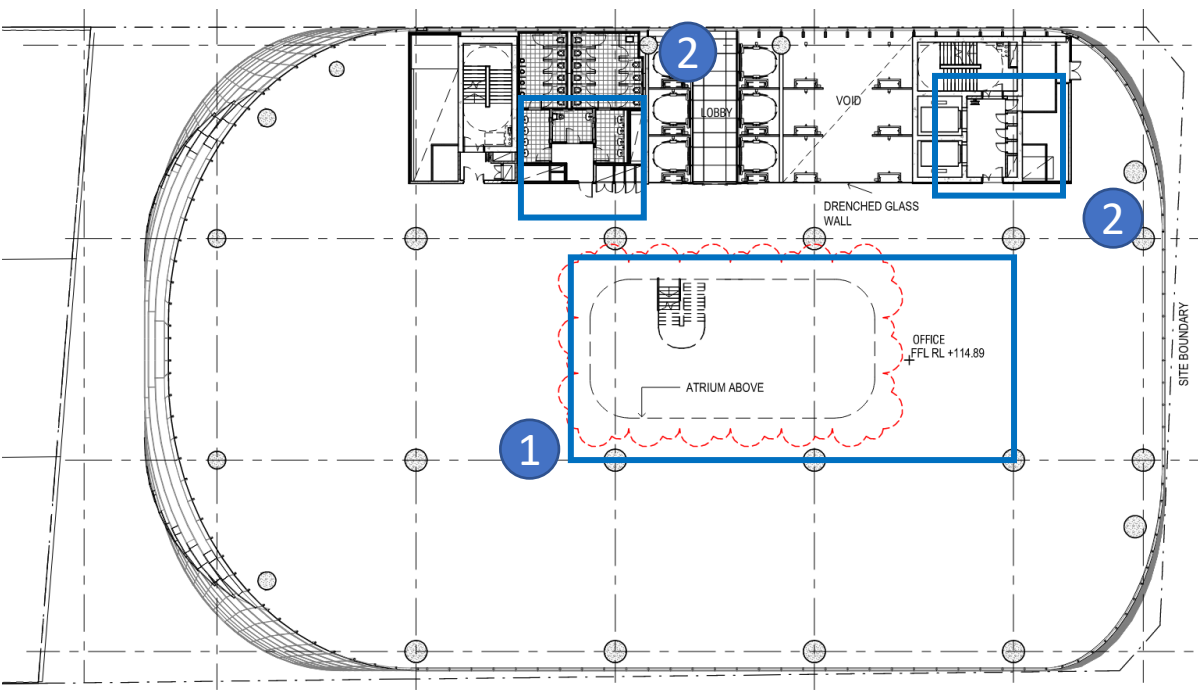
FC2 Drawing



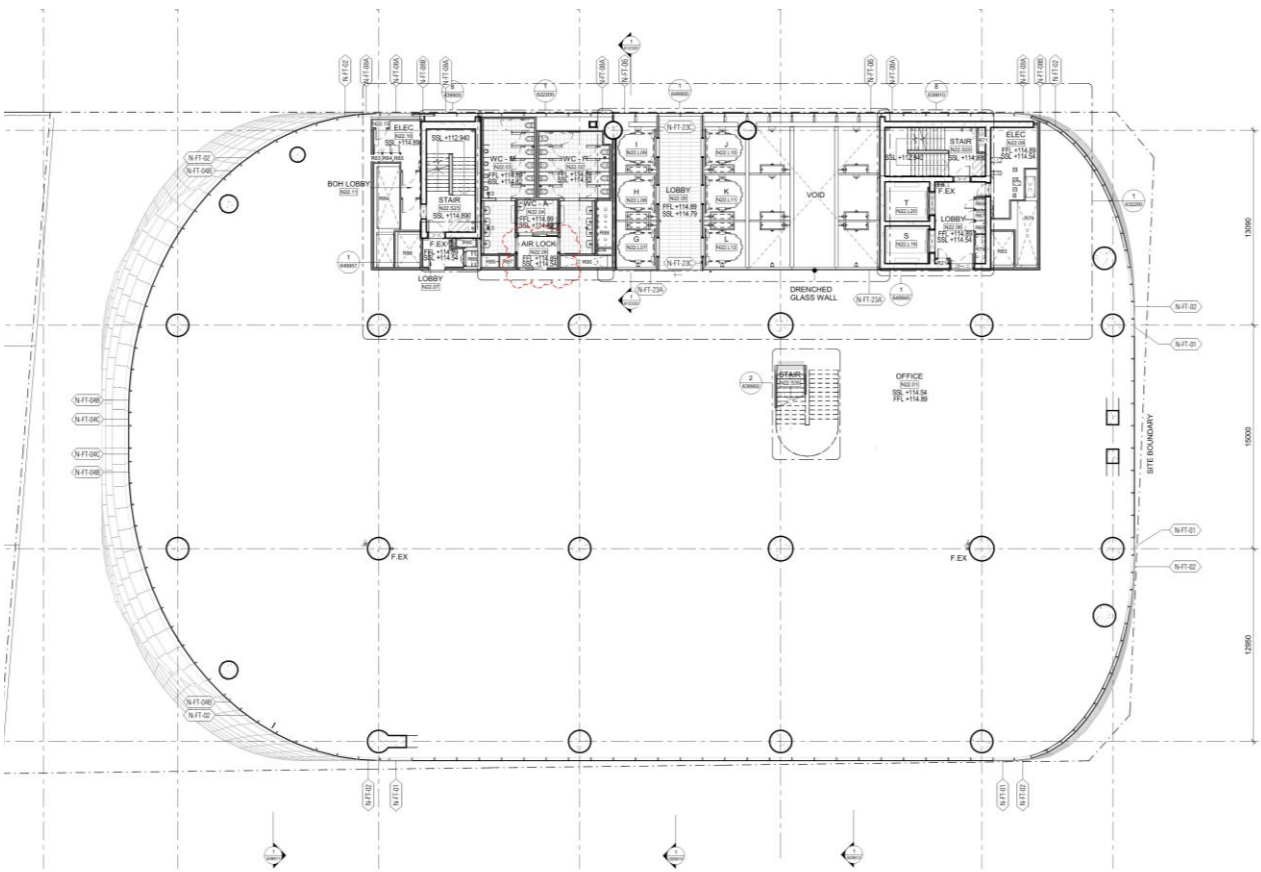
Level 22 Plan

MOD 5 plan with FC2 changes marked up

- 1.Atrium and stair revised
- 2.BOH layout revised



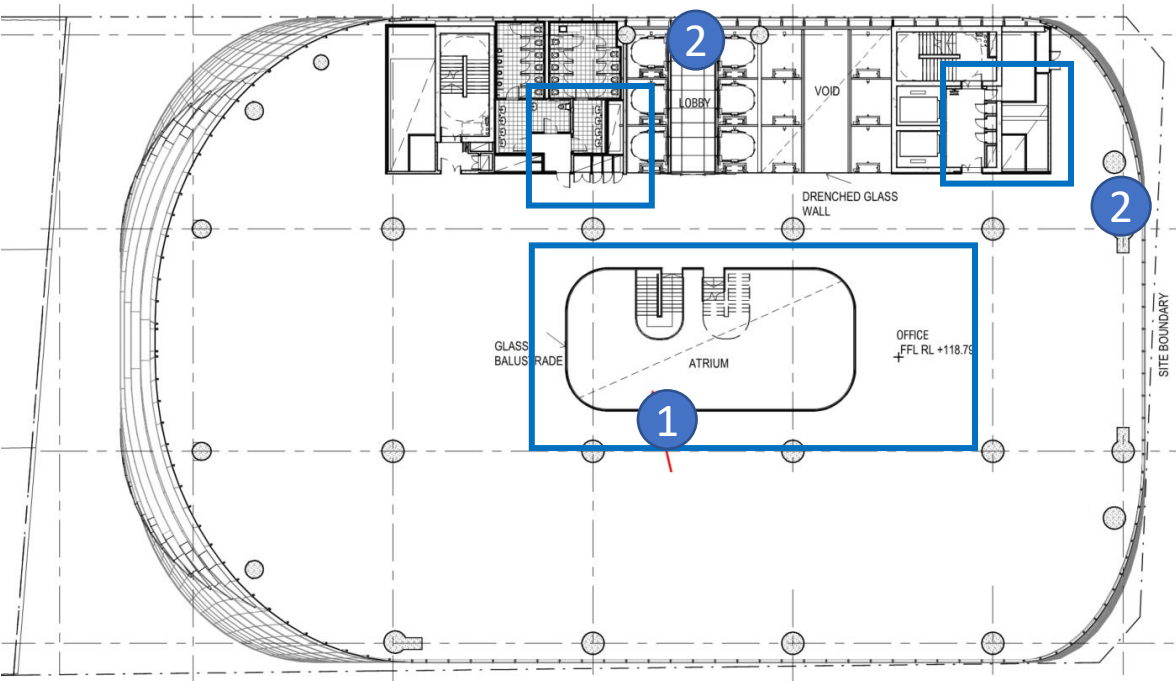
FC2 Drawing



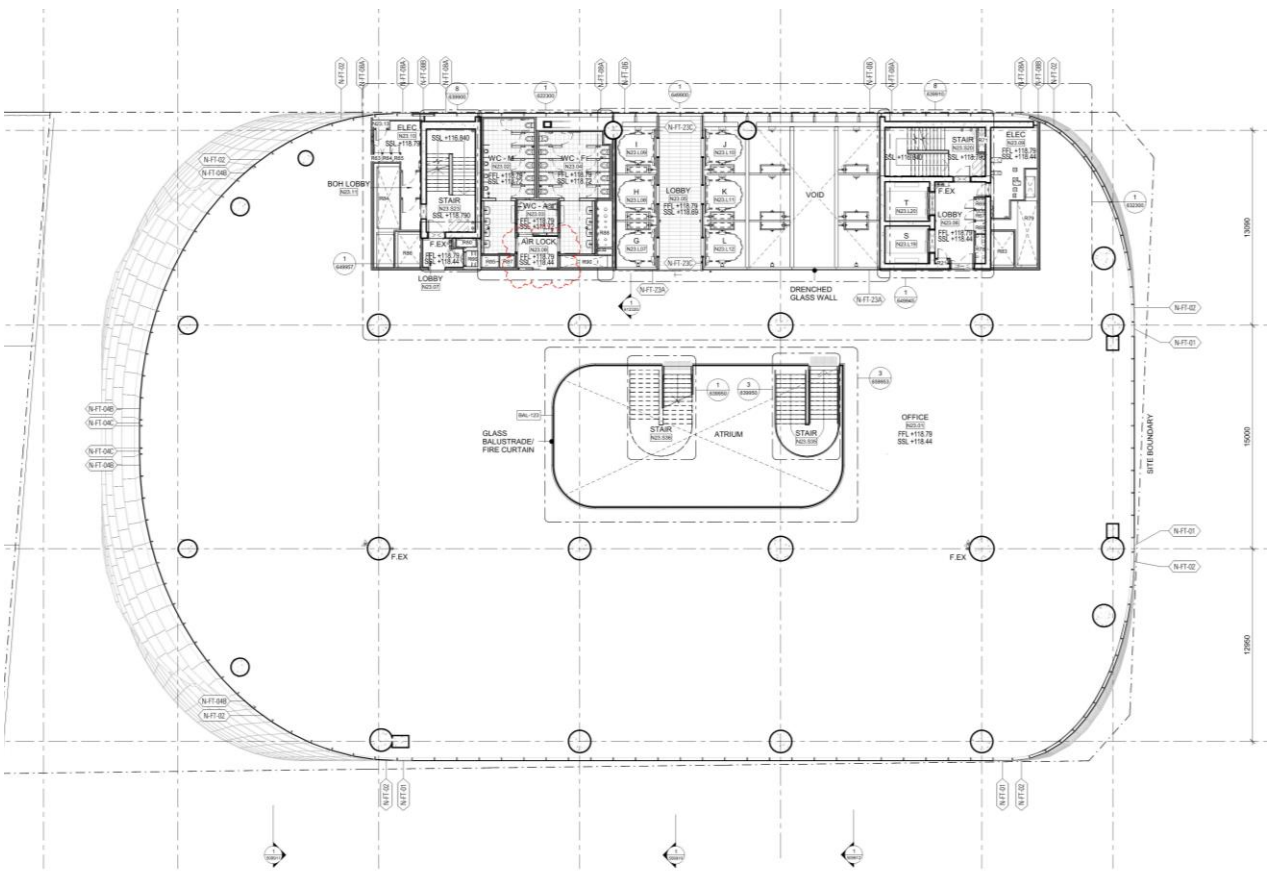
Level 23 Plan

SSD 9270 Plan with FC2 changes marked up

- 1.Atrium and stair revised
- 2.BOH layout revised



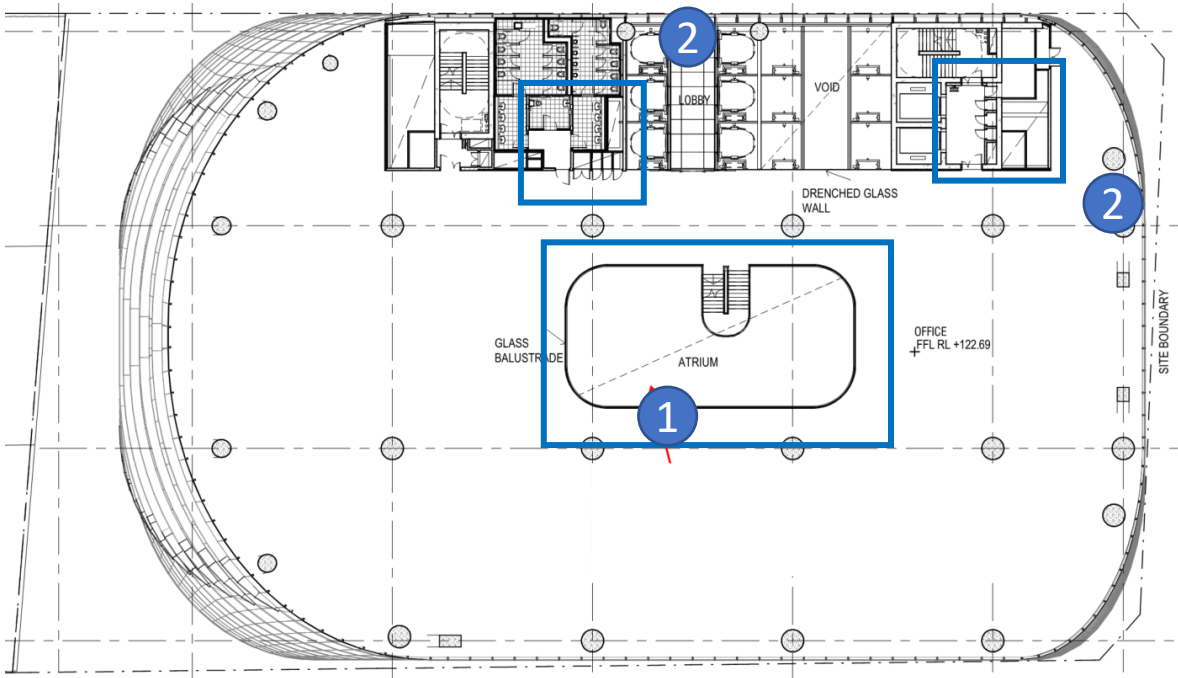
FC2 Drawing



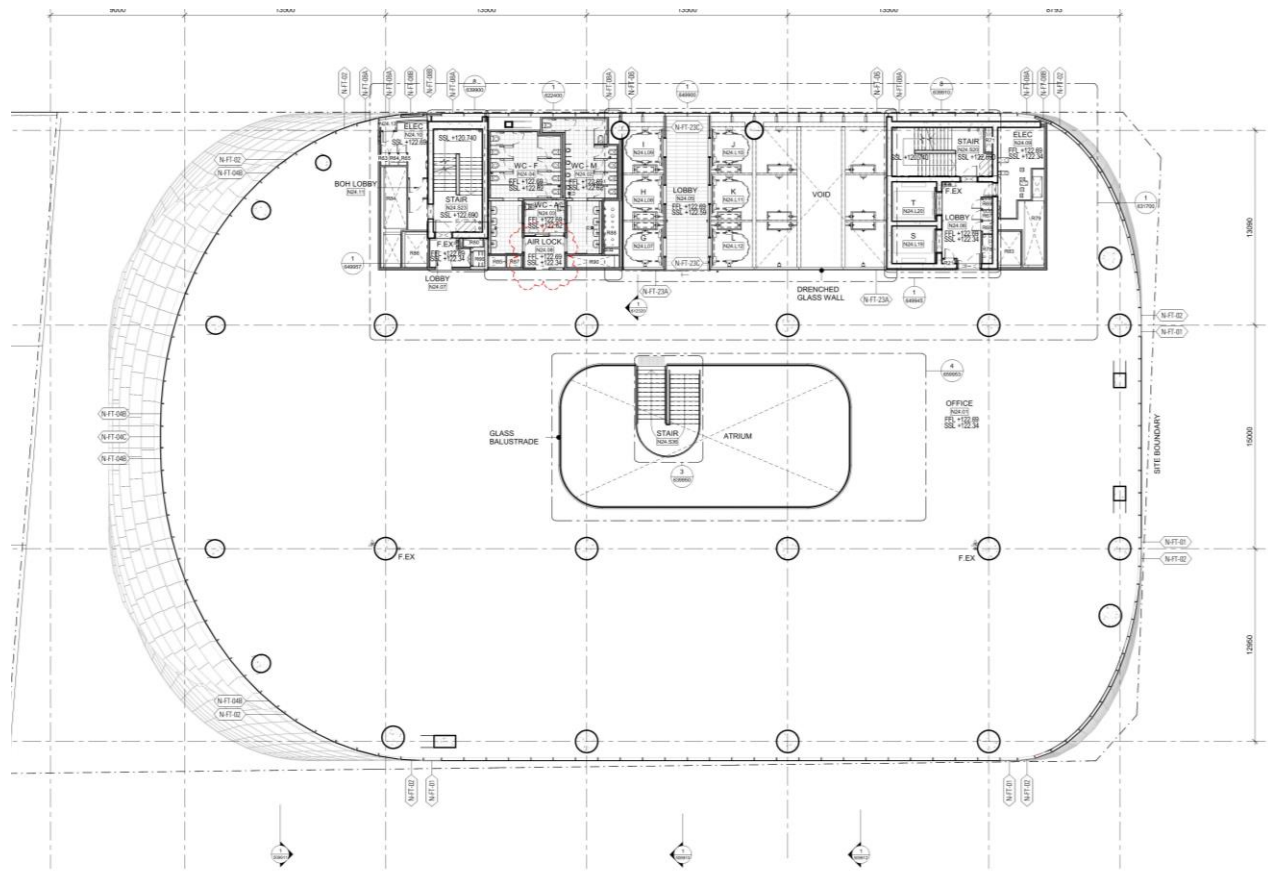
Level 24 Plan

MOD 5 plan with FC2 changes marked up

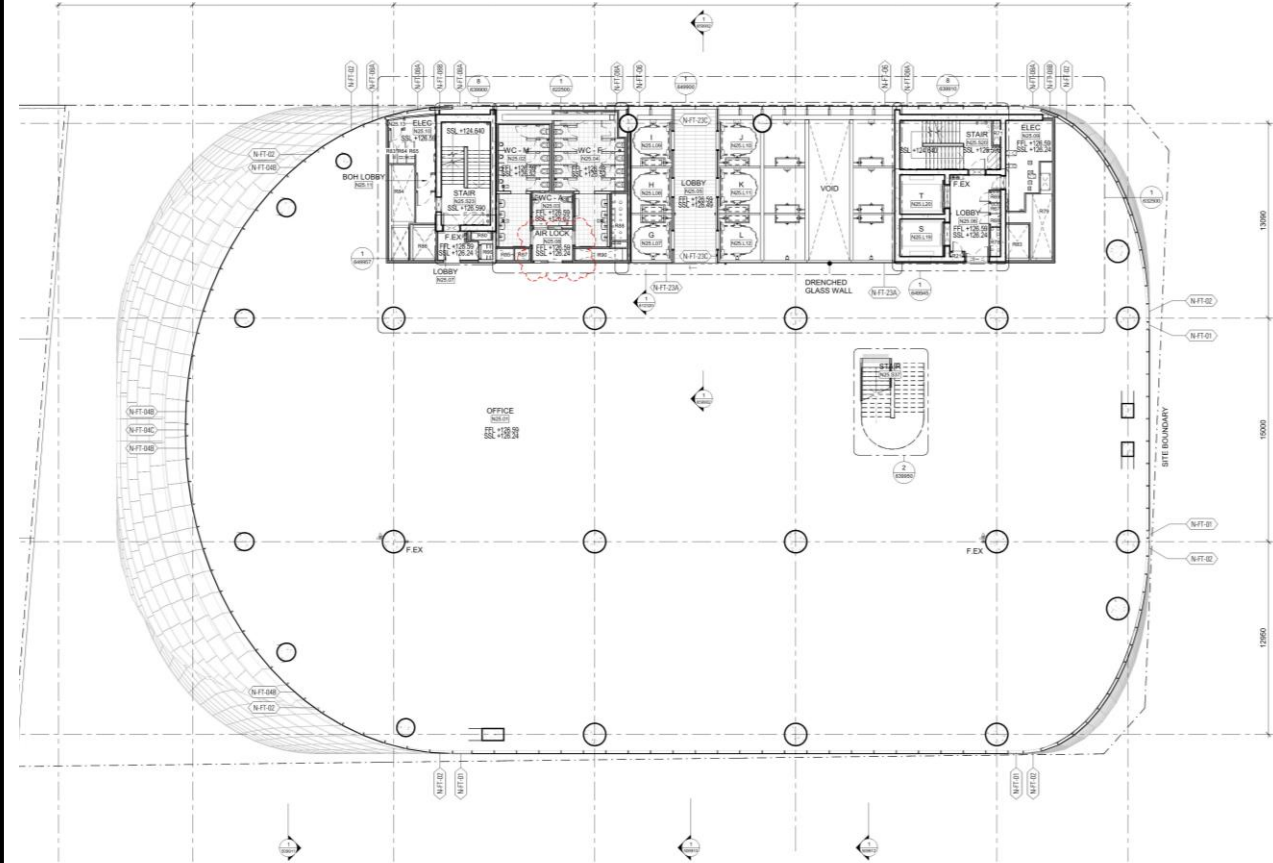
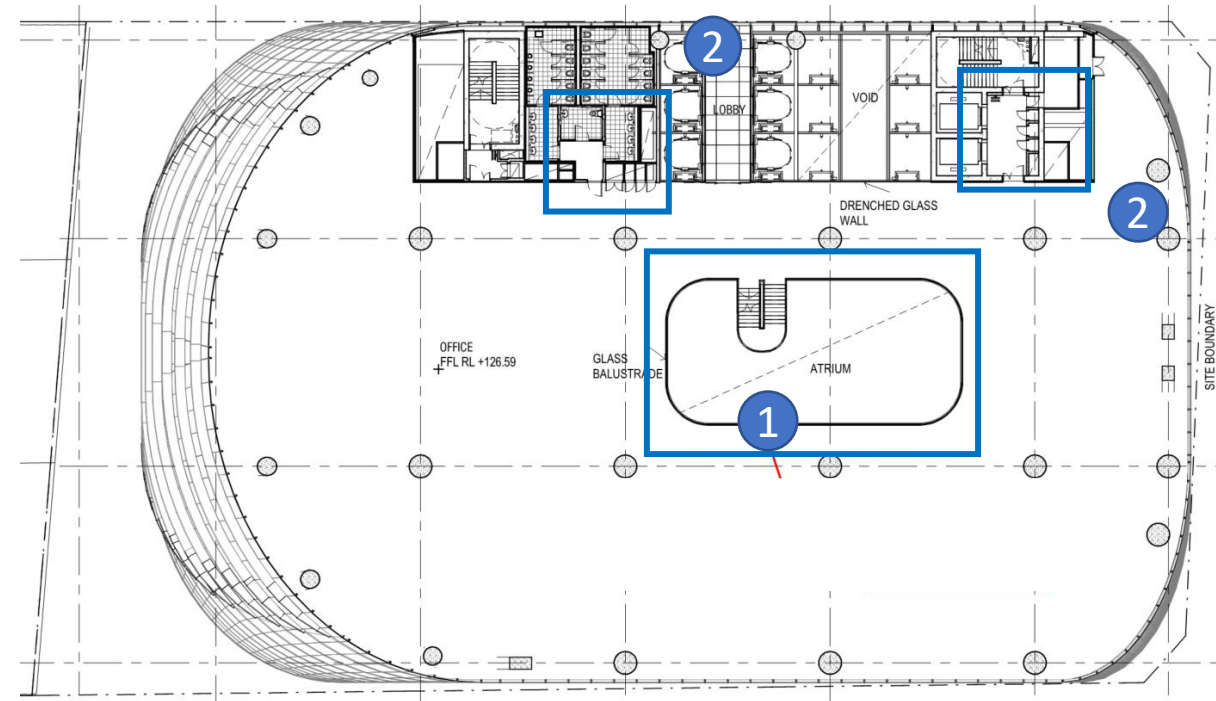
- 1.Atrium and stair revised
- 2.BOH layout revised



FC2 Drawing



- 1.Atrium and stair revised
- 2.BOH layout revised



SSD 9270 plan with FC2 changes marked up

Architectural floor plan of the 13th floor of the 101 California Street tower. The plan shows a large atrium (1) with a glass balustrade, two lobbies (2) with a 'DRENCHED GLASS WALL', and an office area with 'OFFICE FFL RL +130.49'. The plan is bounded by a 'SITE BOUNDARY' and includes a curved glass facade on the left.

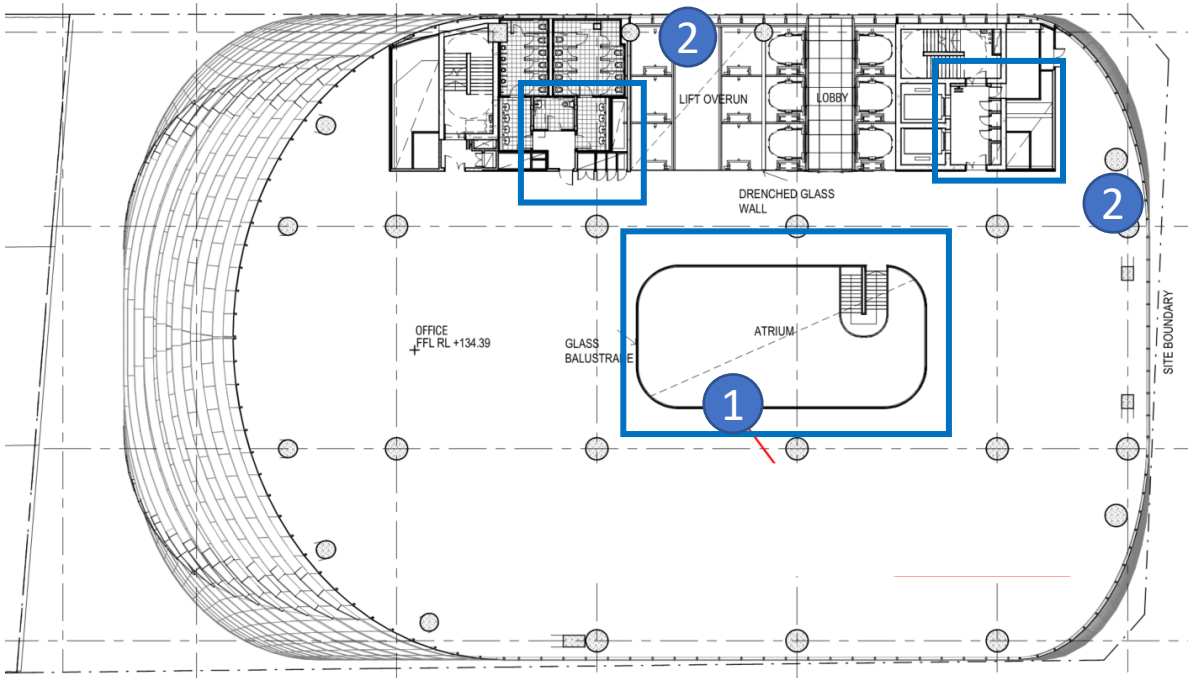
This detailed architectural floor plan illustrates the layout of the 10000 building. The central feature is a large atrium with a glass balustrade and fire curtain, containing two stairwells. Surrounding the atrium are various functional areas, including offices, lobbies, and service spaces. The plan is annotated with room numbers, elevators, stairs, and a site boundary. Key areas include:

- Central Atrium:** Features a glass balustrade, fire curtain, and two stairwells.
- Offices:** Numerous office spaces are distributed throughout the plan, including a large office area on the left and smaller offices on the right.
- Lobbies:** Several lobbies are shown, including a large lobby on the left and smaller lobbies on the right.
- Service Areas:** Includes a kitchen, restrooms, and a service area.
- Stairwells:** Multiple stairwells are located throughout the building, including a large one in the central atrium.
- Elevators:** Several elevator shafts are indicated by circles with 'E' labels.
- Site Boundary:** A dashed line indicates the site boundary.

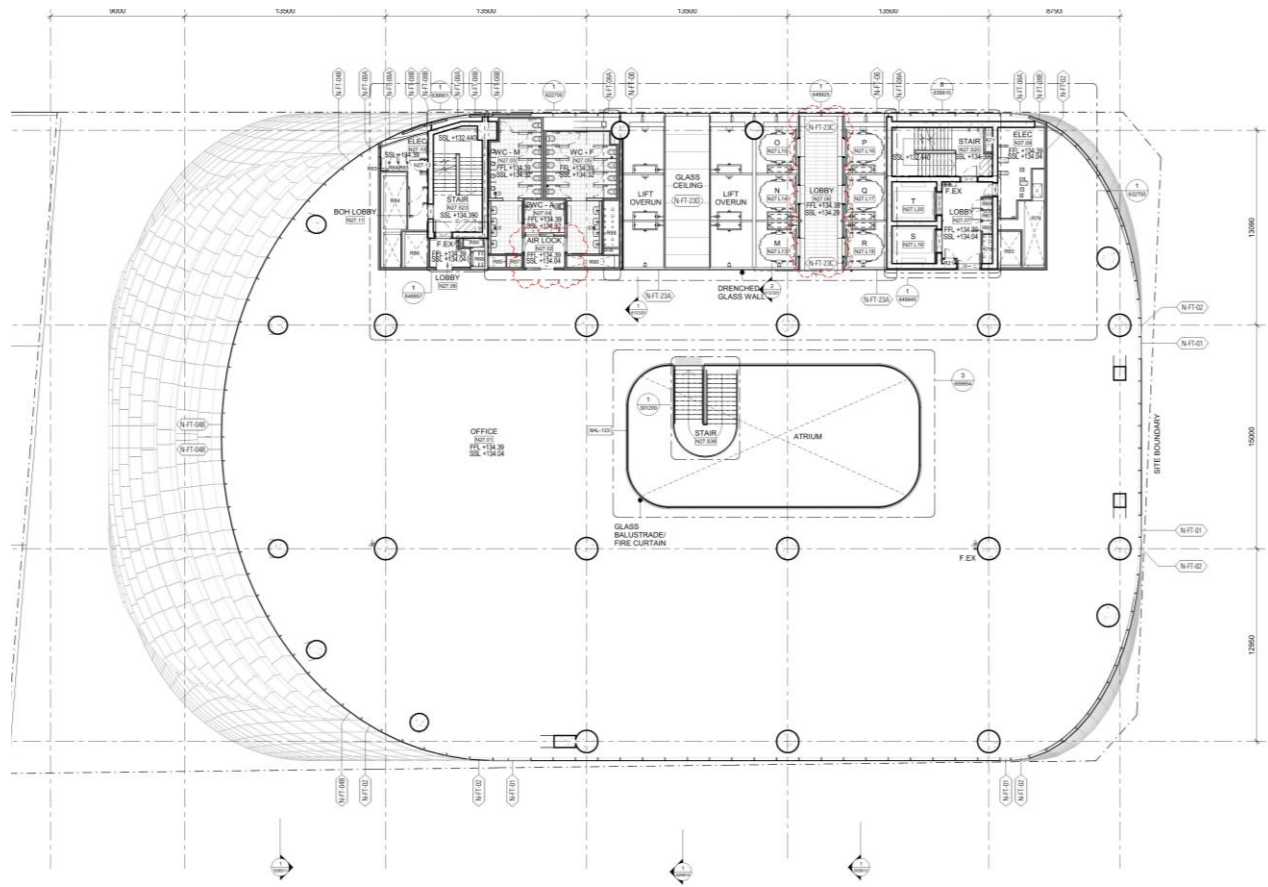
Level 27 Plan

SSD 9270 plan with FC2 changes marked up

- 1.Atrium and stair revised
- 2.BOH layout revised



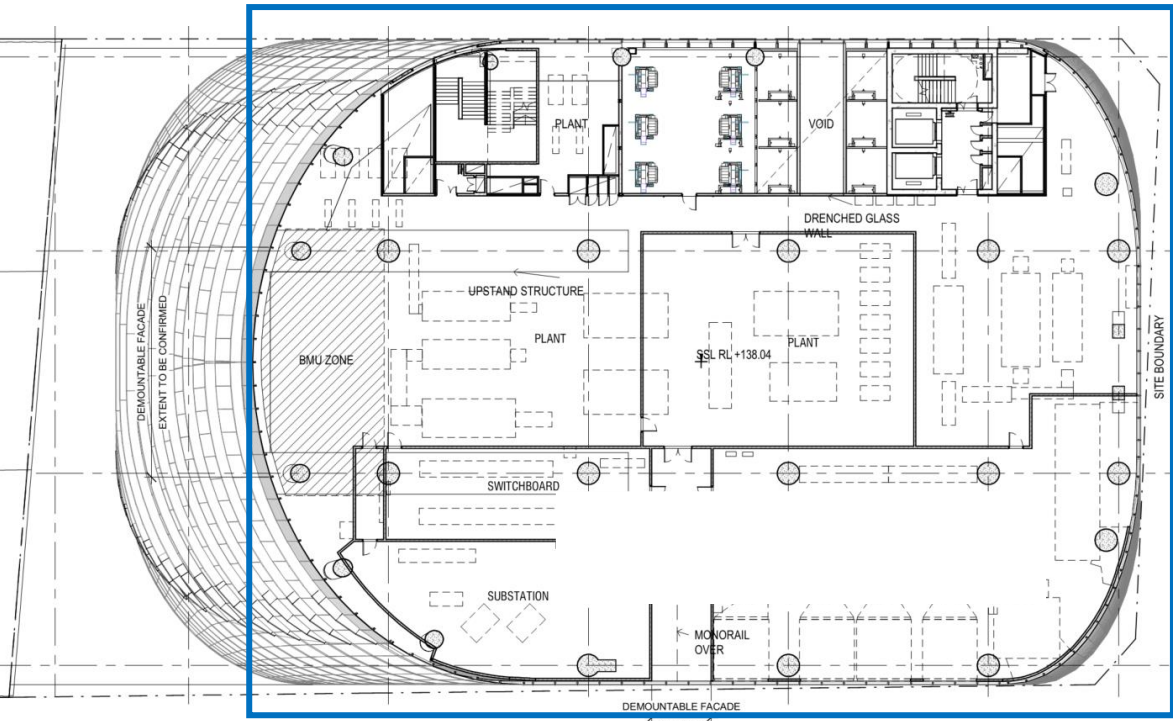
FC2 Drawing



Level 28 Plan

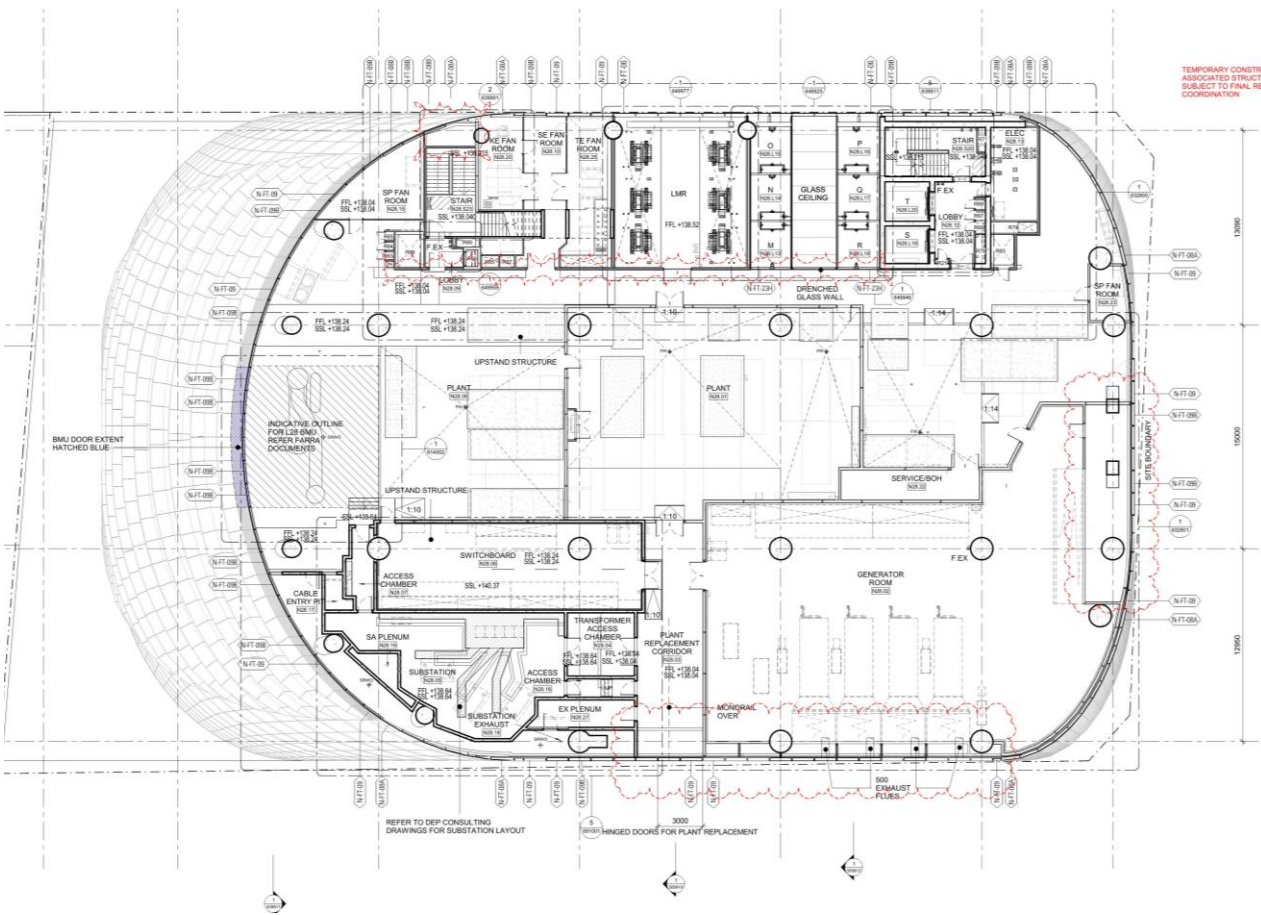
SSD 9270 plan with FC2 changes marked up

1.Plantroom layout revised



1

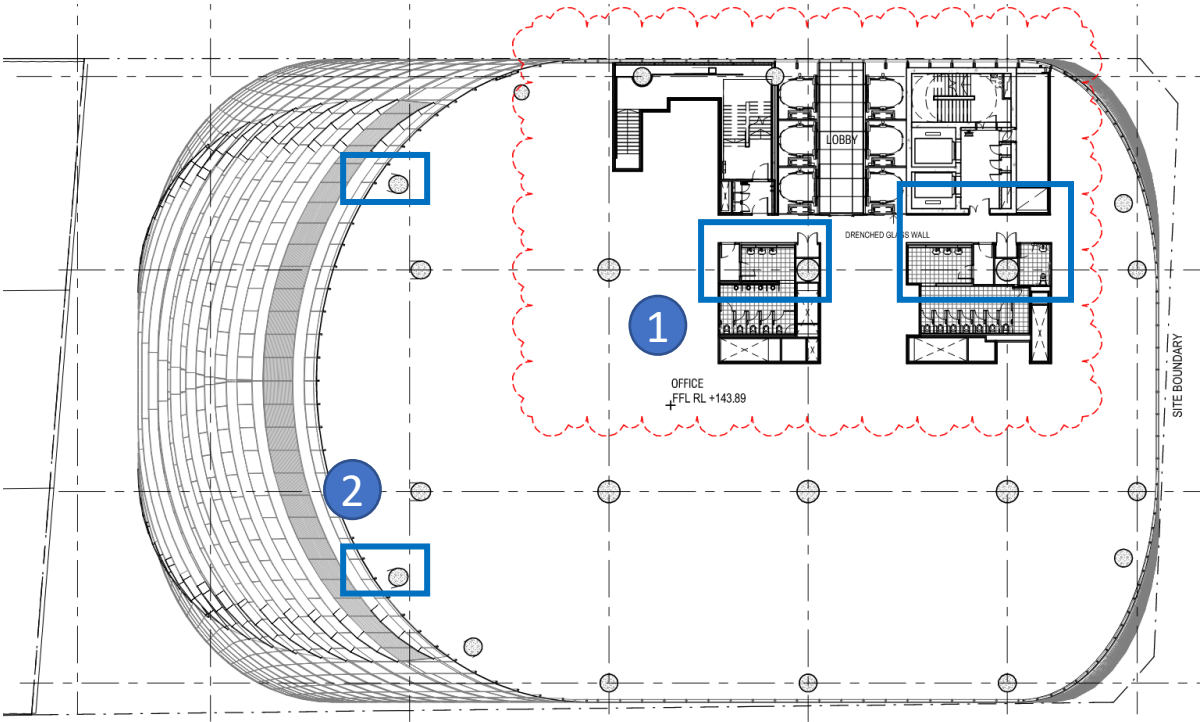
FC2 Drawing



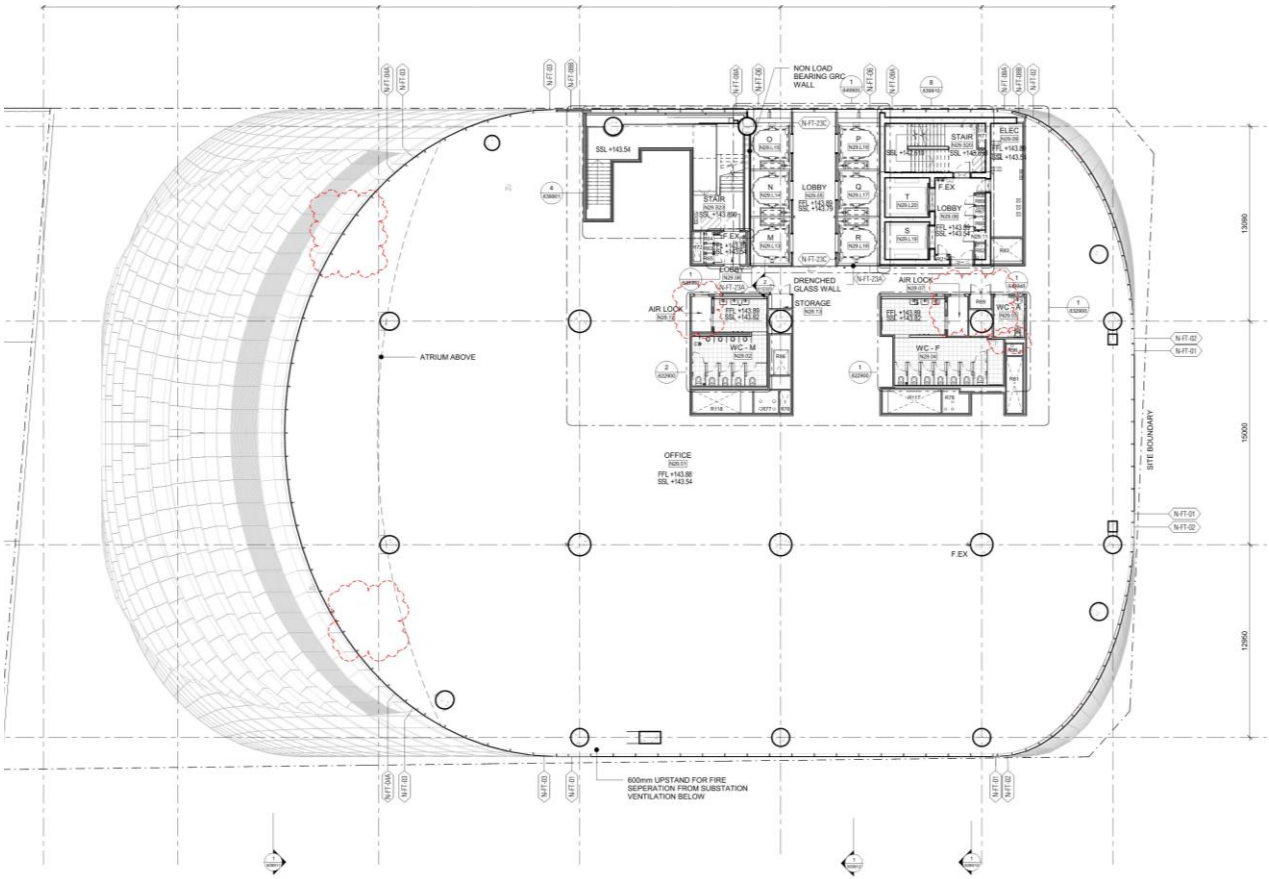
Level 29 Plan

MOD 5 plan with FC2 changes marked up

- 1. BOH layout revised
- 2. Columns deleted



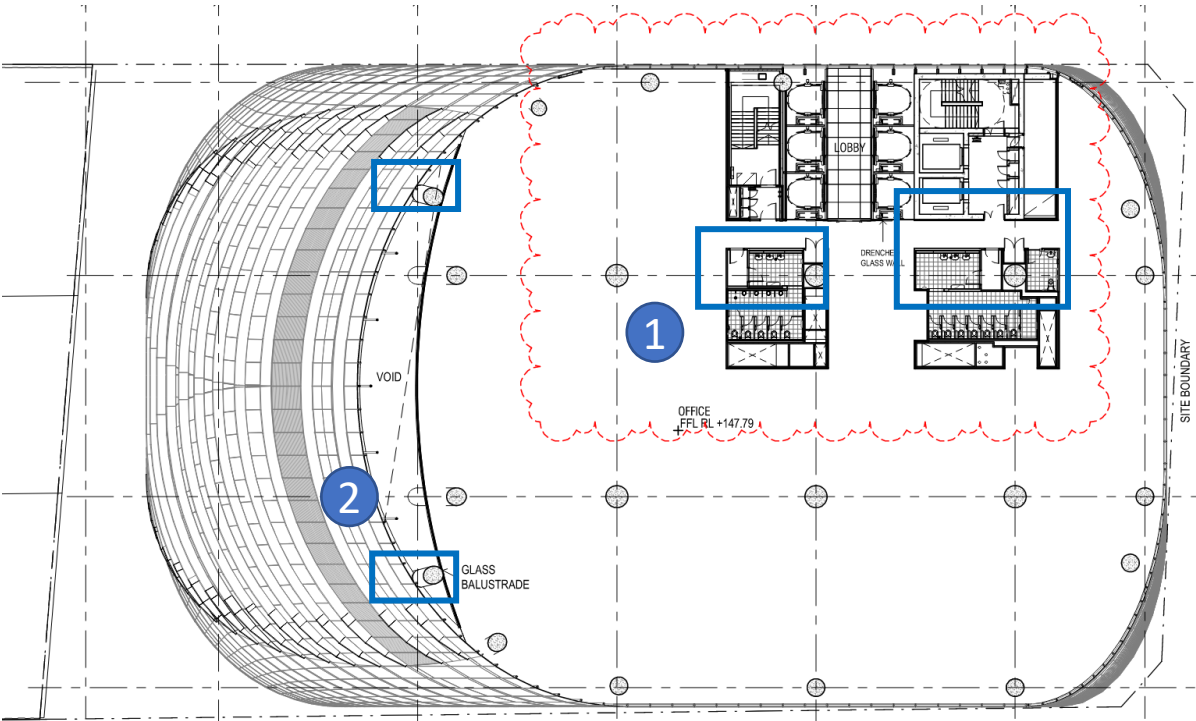
FC2 Drawing



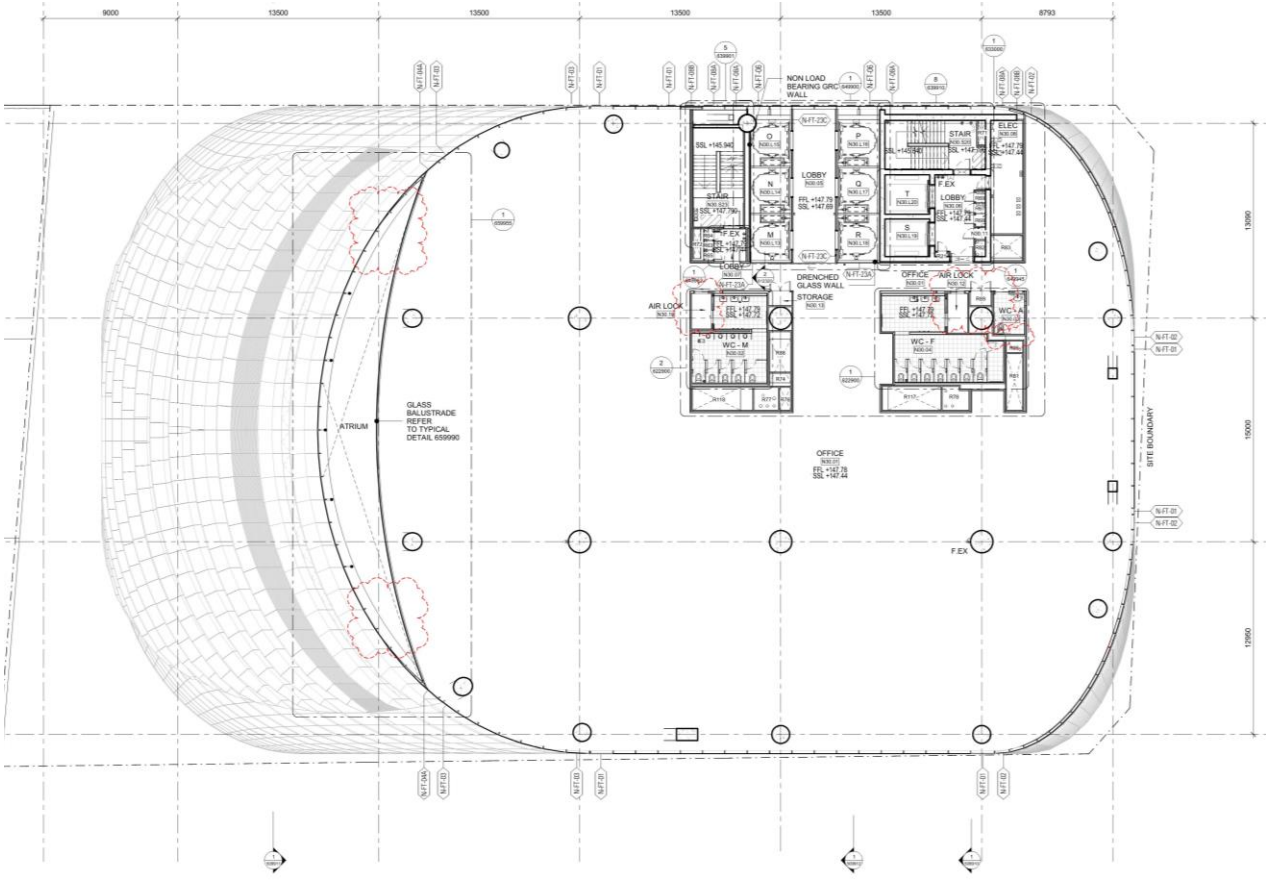
Level 30 Plan

MOD 5 plan with FC2 changes marked up

- 1. BOH layout revised
- 2. Columns deleted



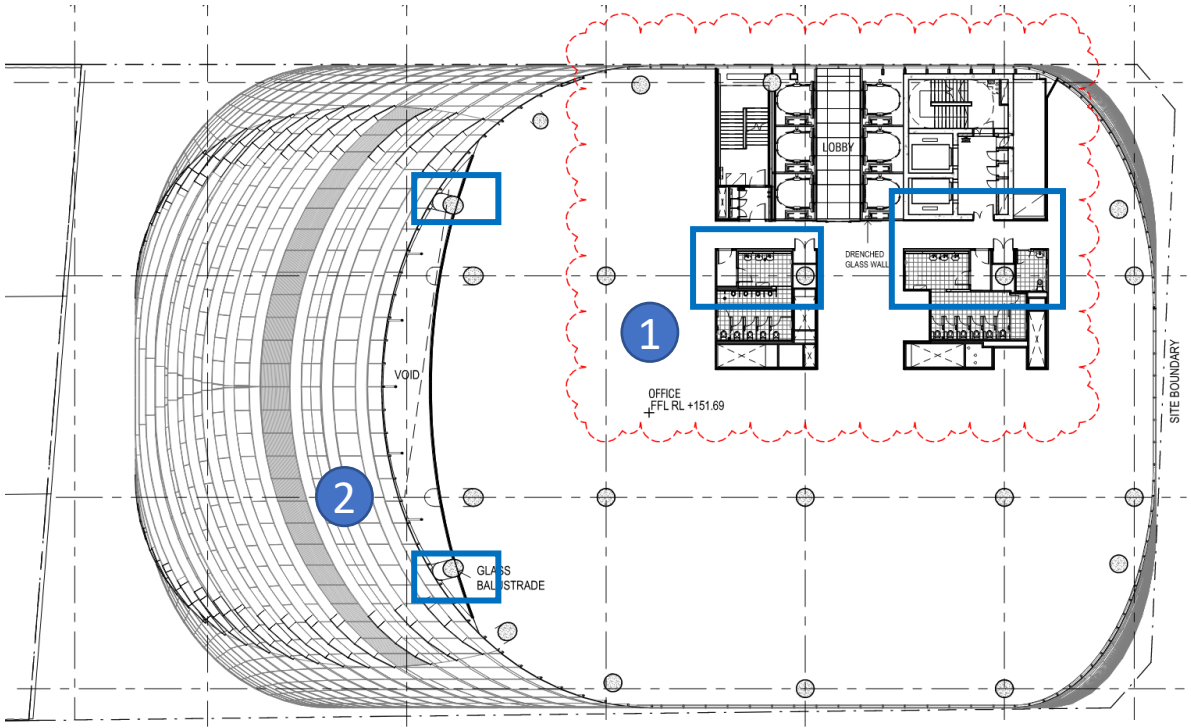
FC2 Drawing



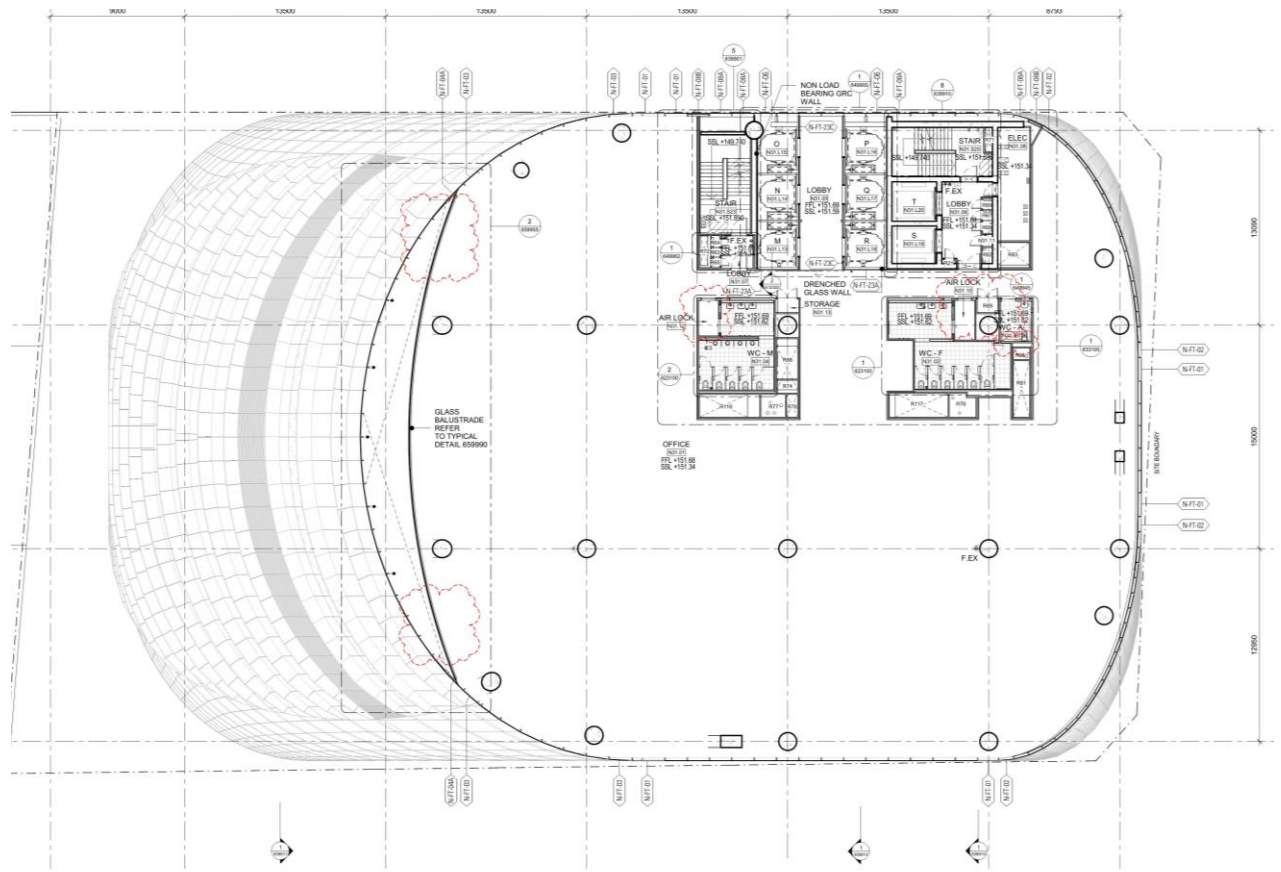
Level 31 Plan

MOD 5 plan with FC2 changes marked up

- 1. BOH layout revised
- 2. Columns deleted



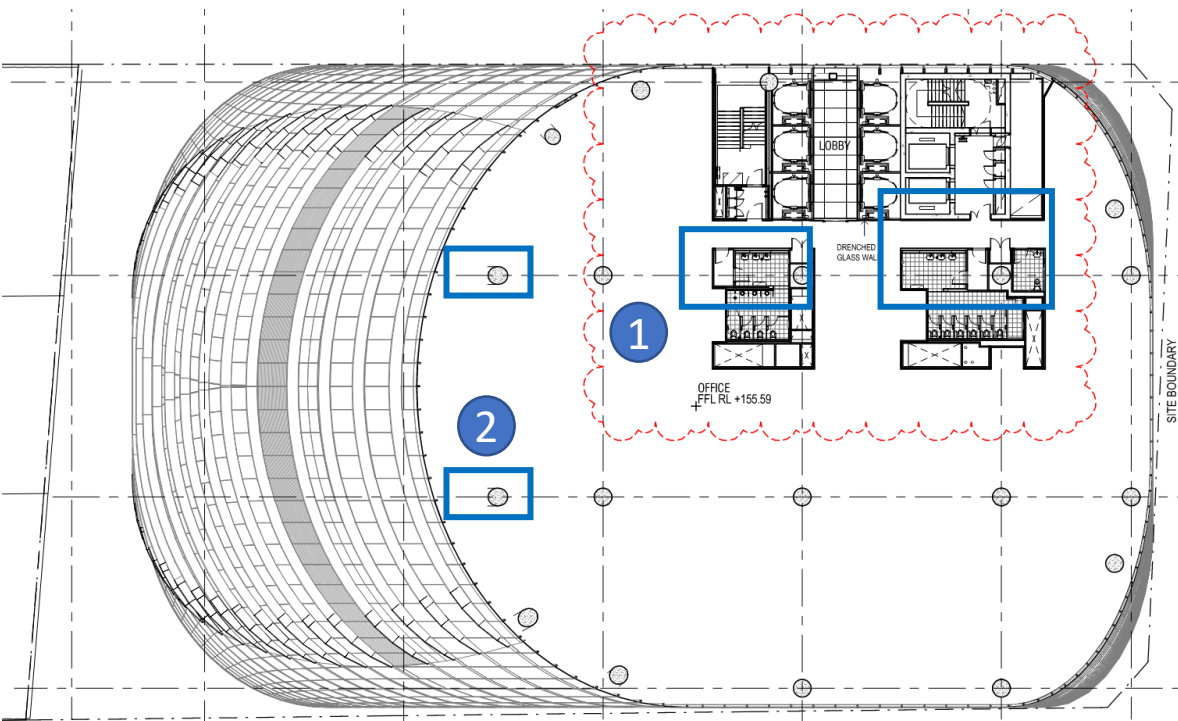
FC2 Drawing



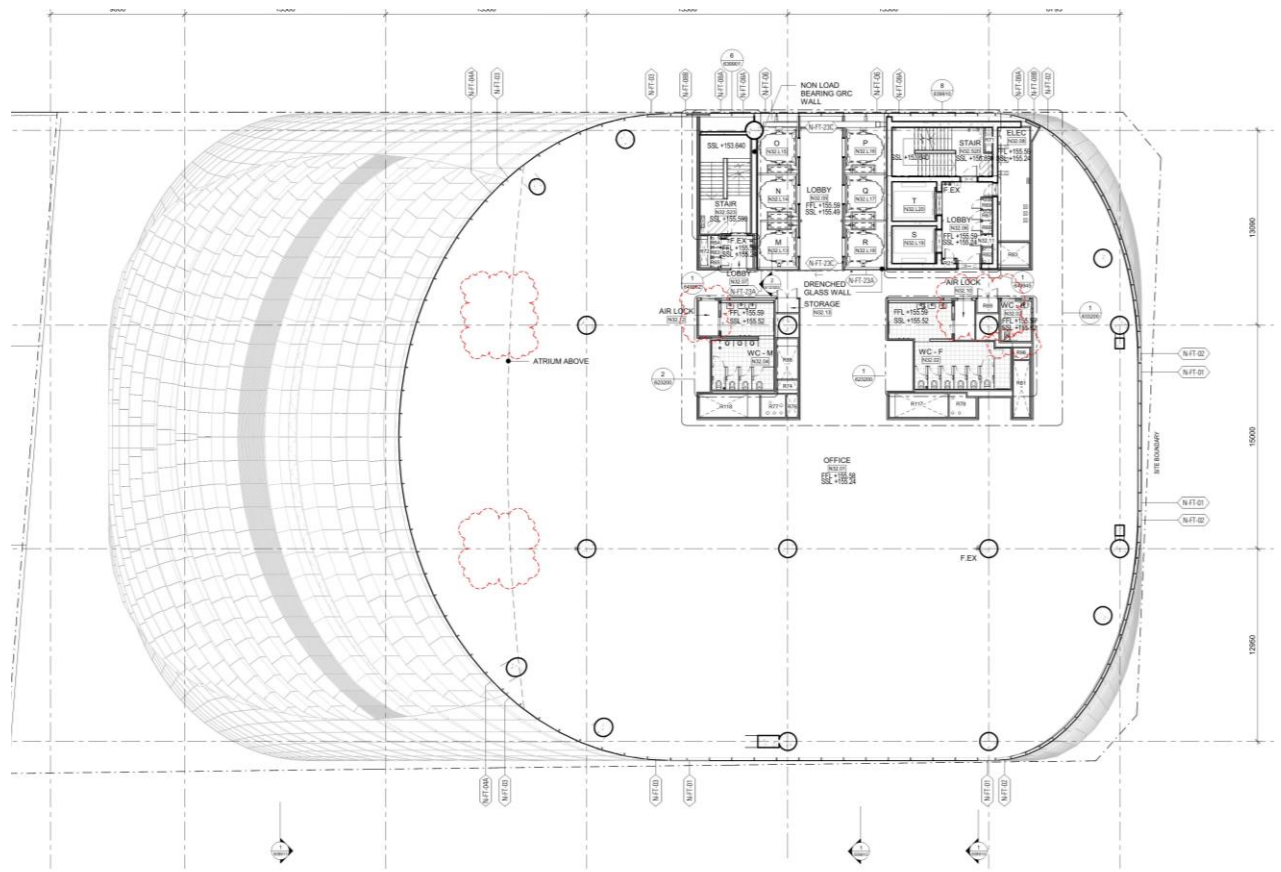
Level 32 Plan

MOD 5 plan with FC2 changes marked up

- 1. BOH layout revised
- 2. Columns deleted



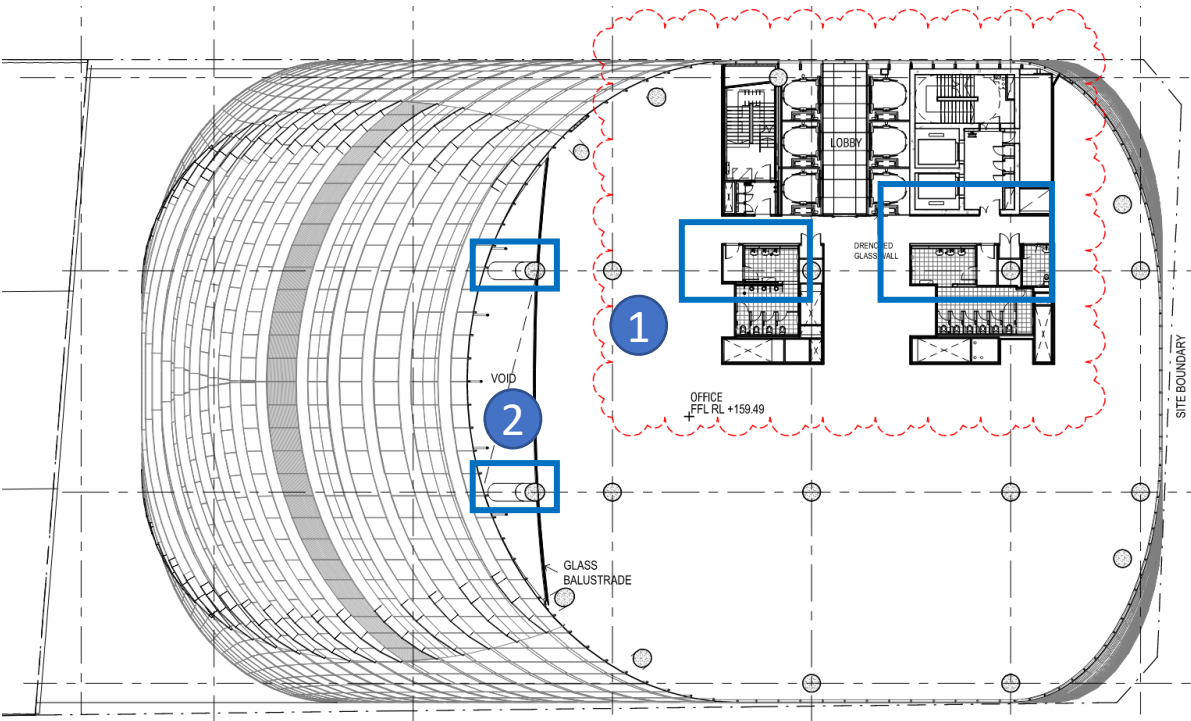
FC2 Drawing



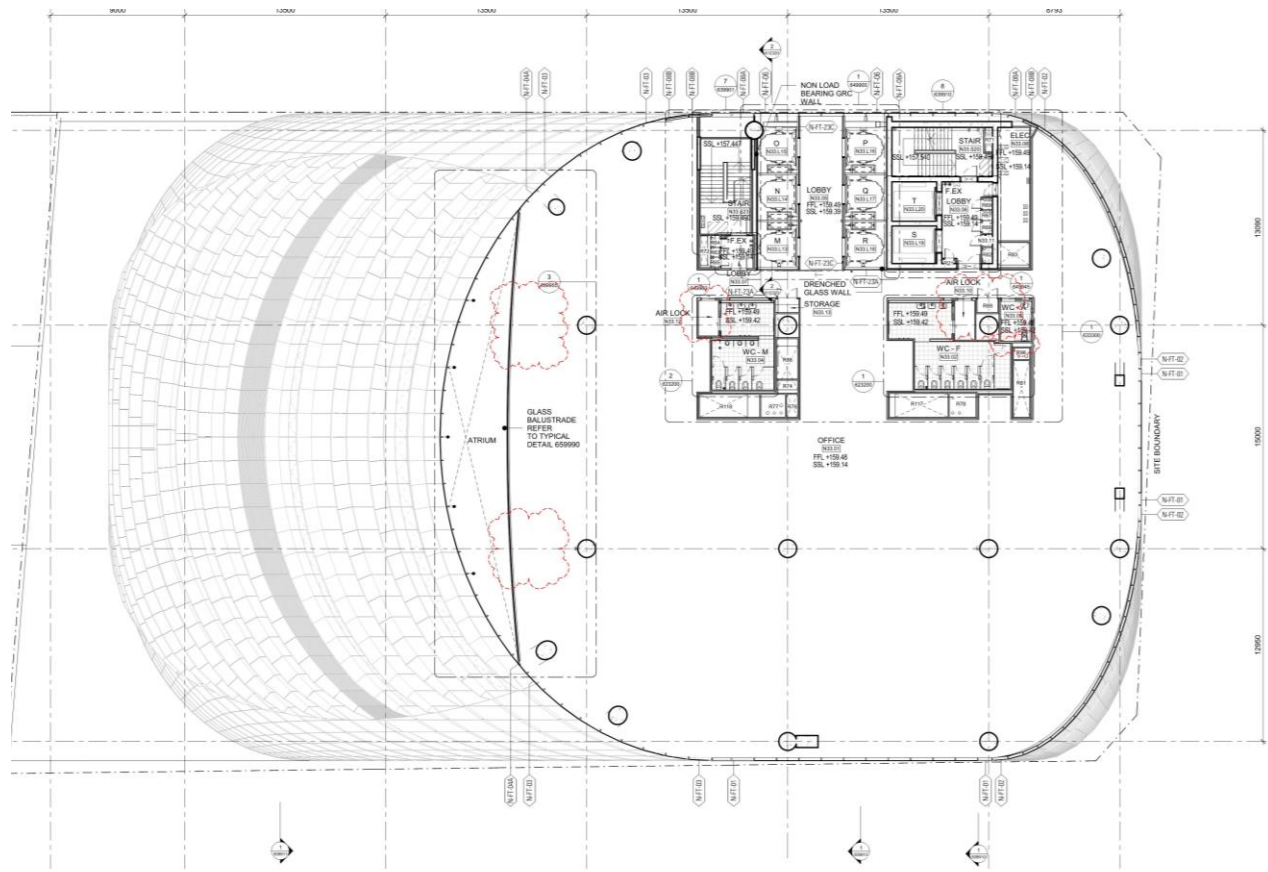
Level 33 Plan

MOD 5 plan with FC2 changes marked up

- 1. BOH layout revised
- 2. Columns deleted



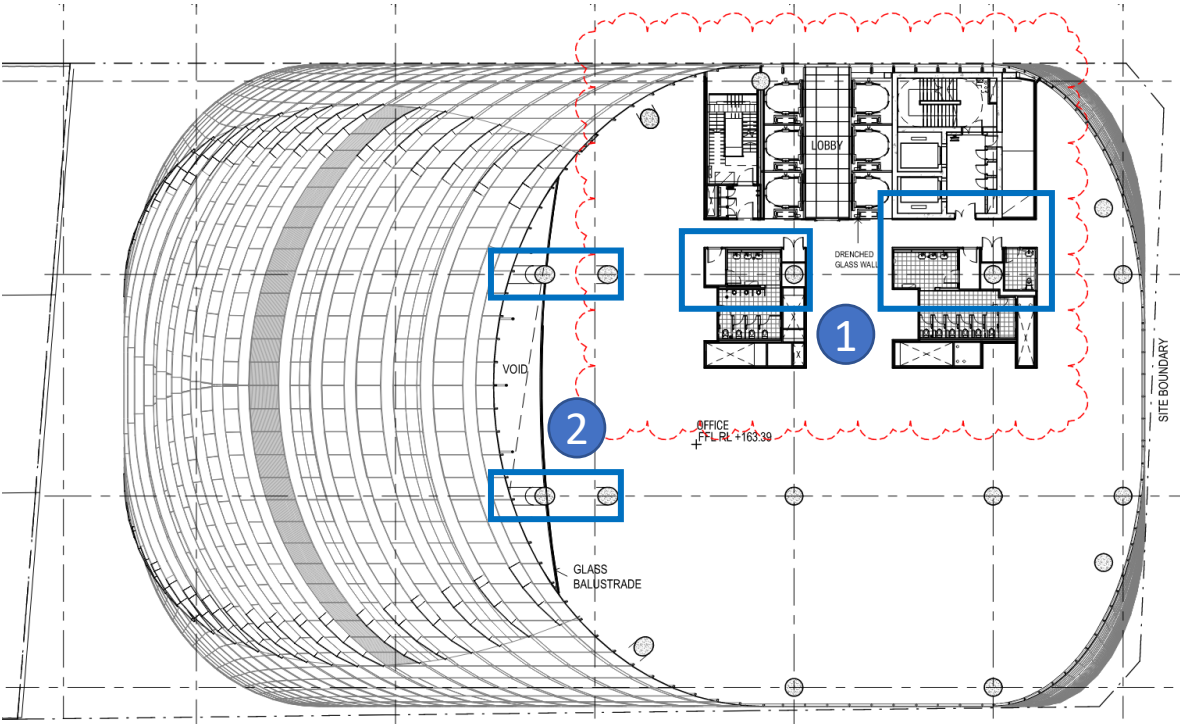
FC2 Drawing



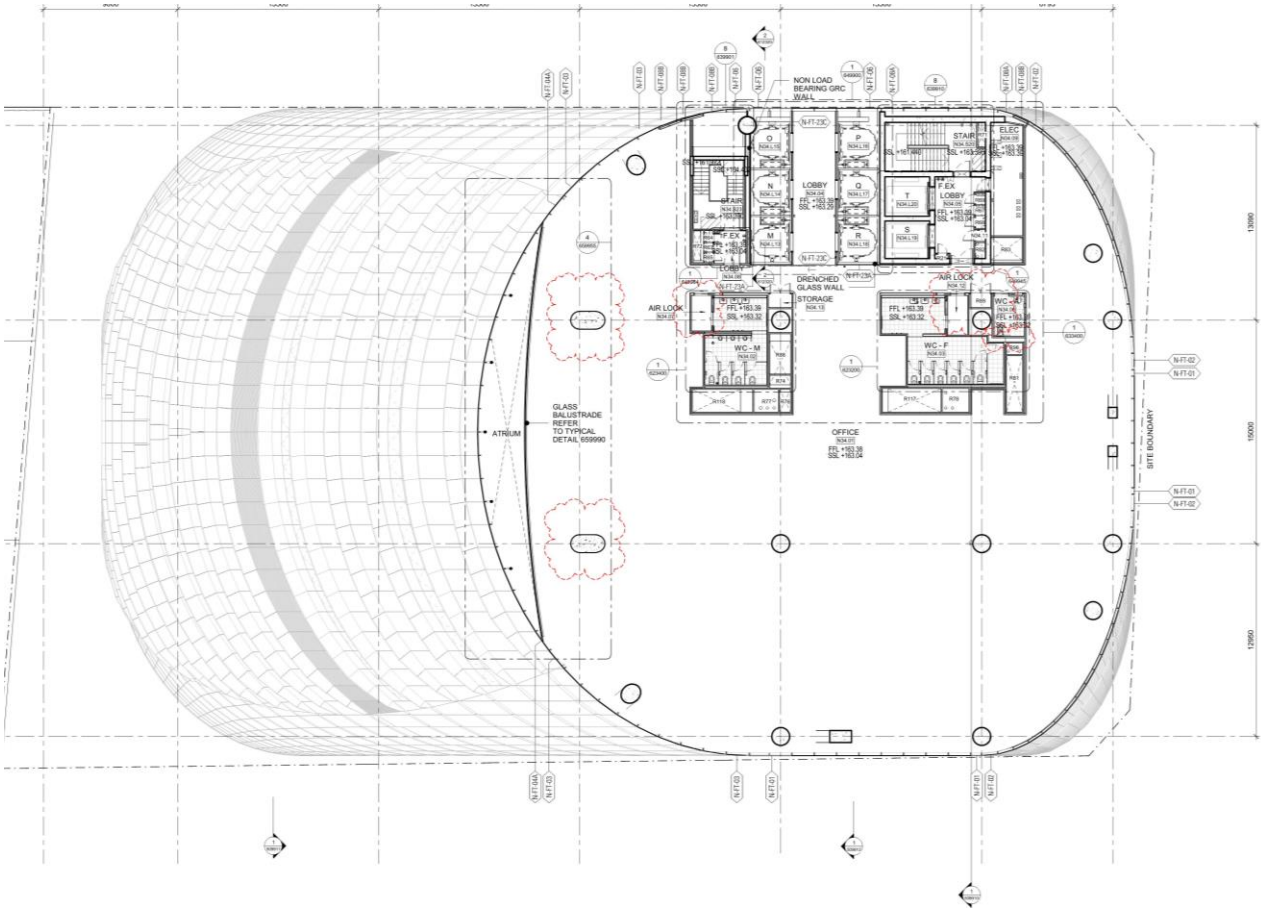
Level 34 Plan

MOD 5 plan with FC2 changes marked up

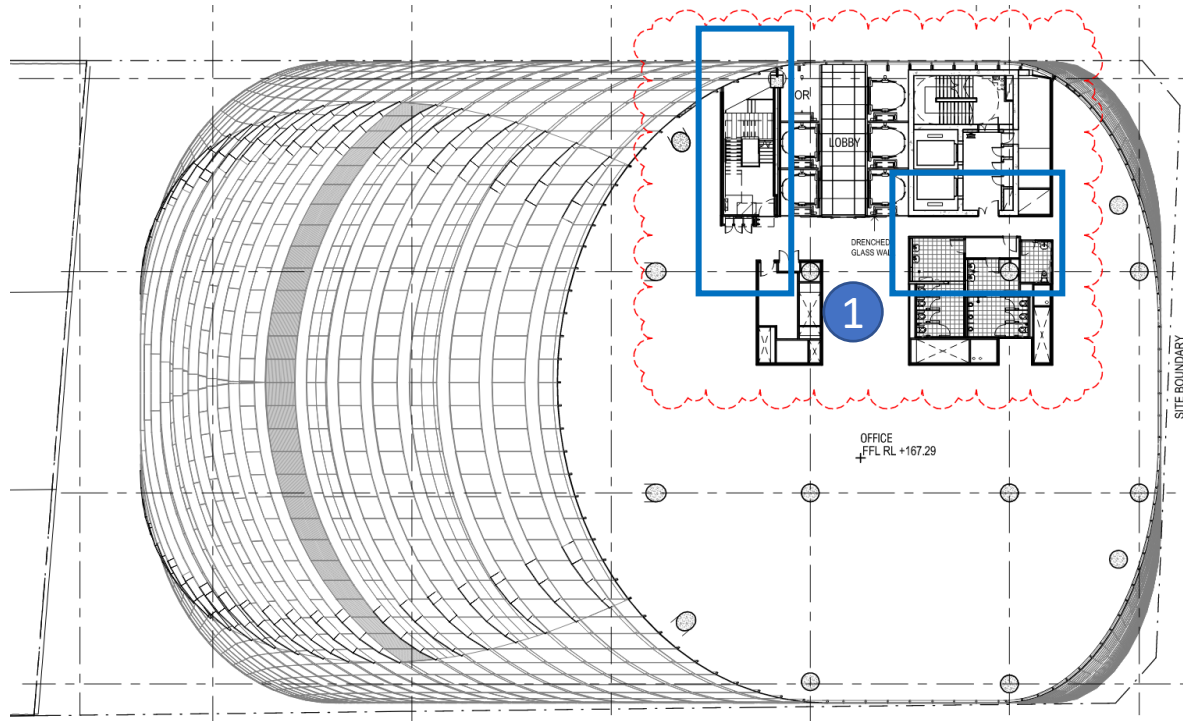
- 1. BOH layout revised
- 2. Columns revised



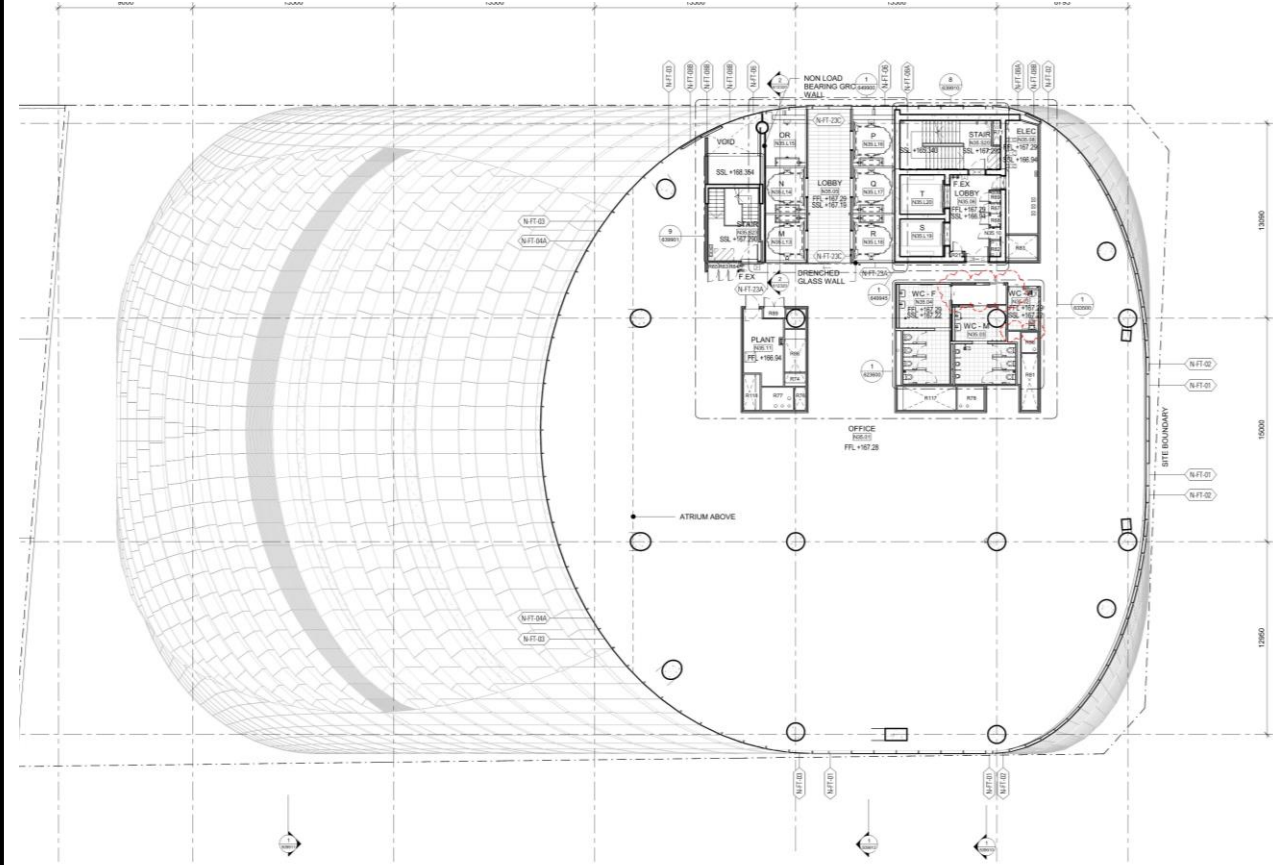
FC2 Drawing



1.BOH revised



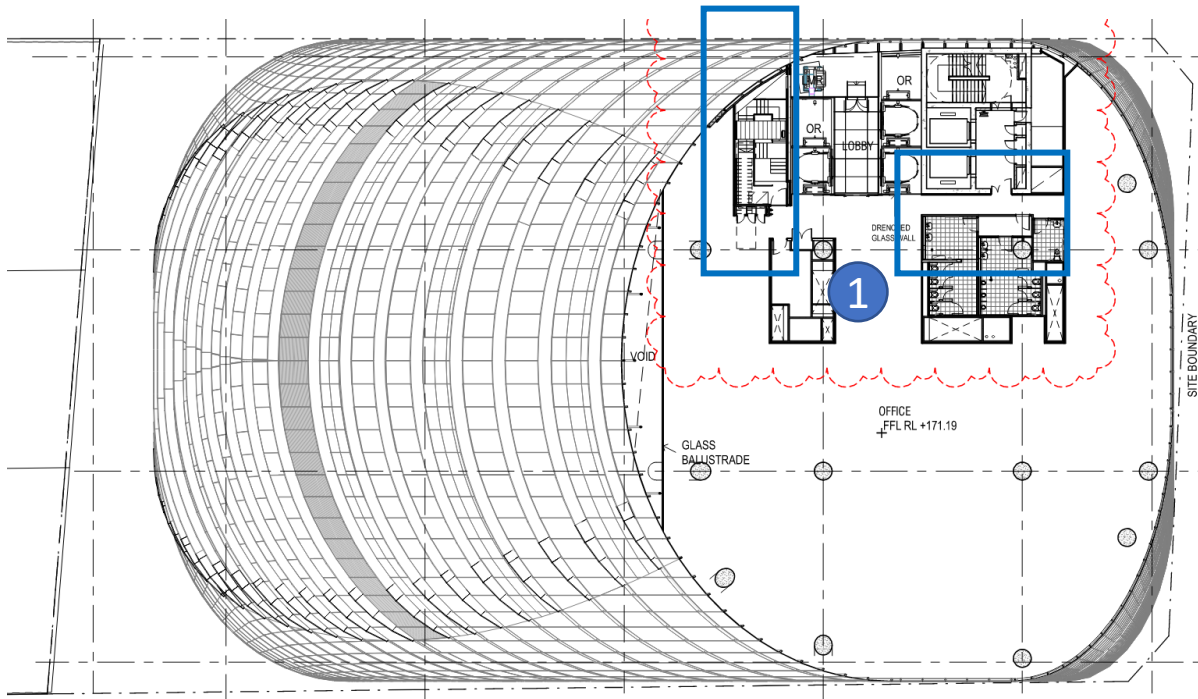
FC2 Drawing



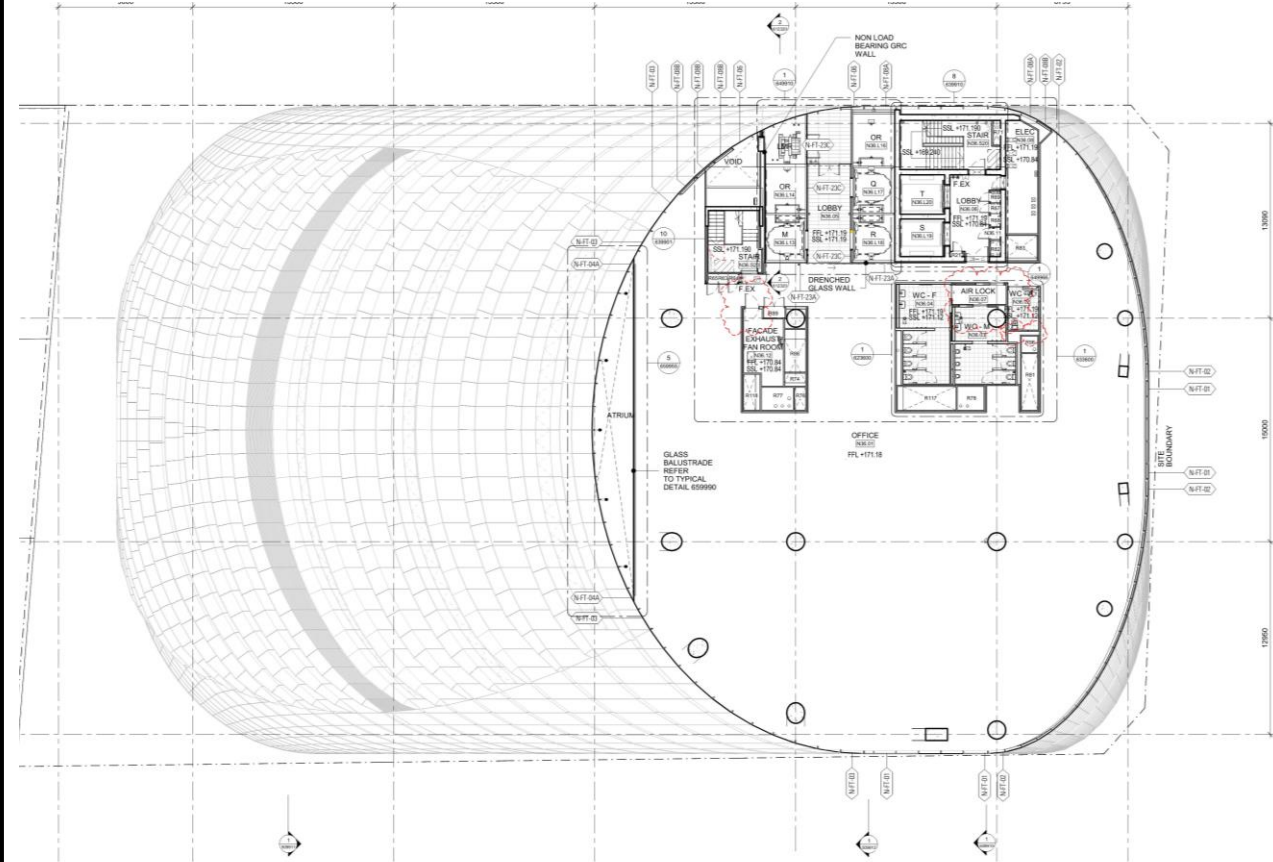
Level 36 Plan

MOD 5 with FC2 changes marked up

1. BOH revised



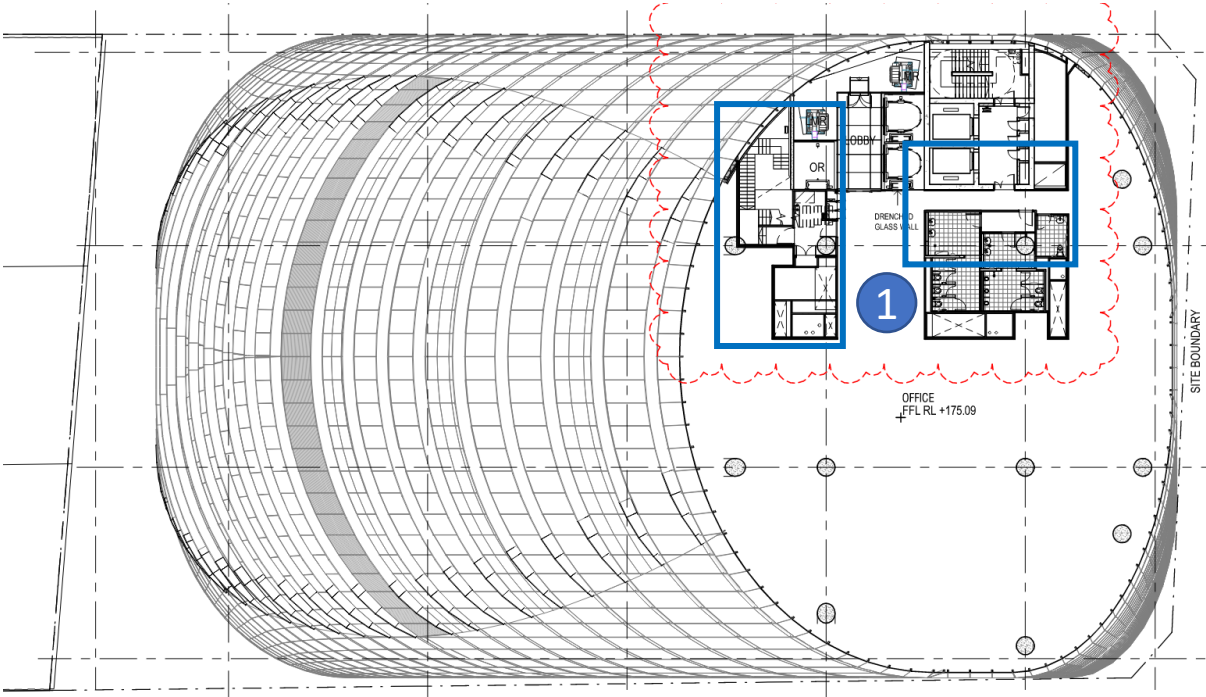
FC2 Drawing



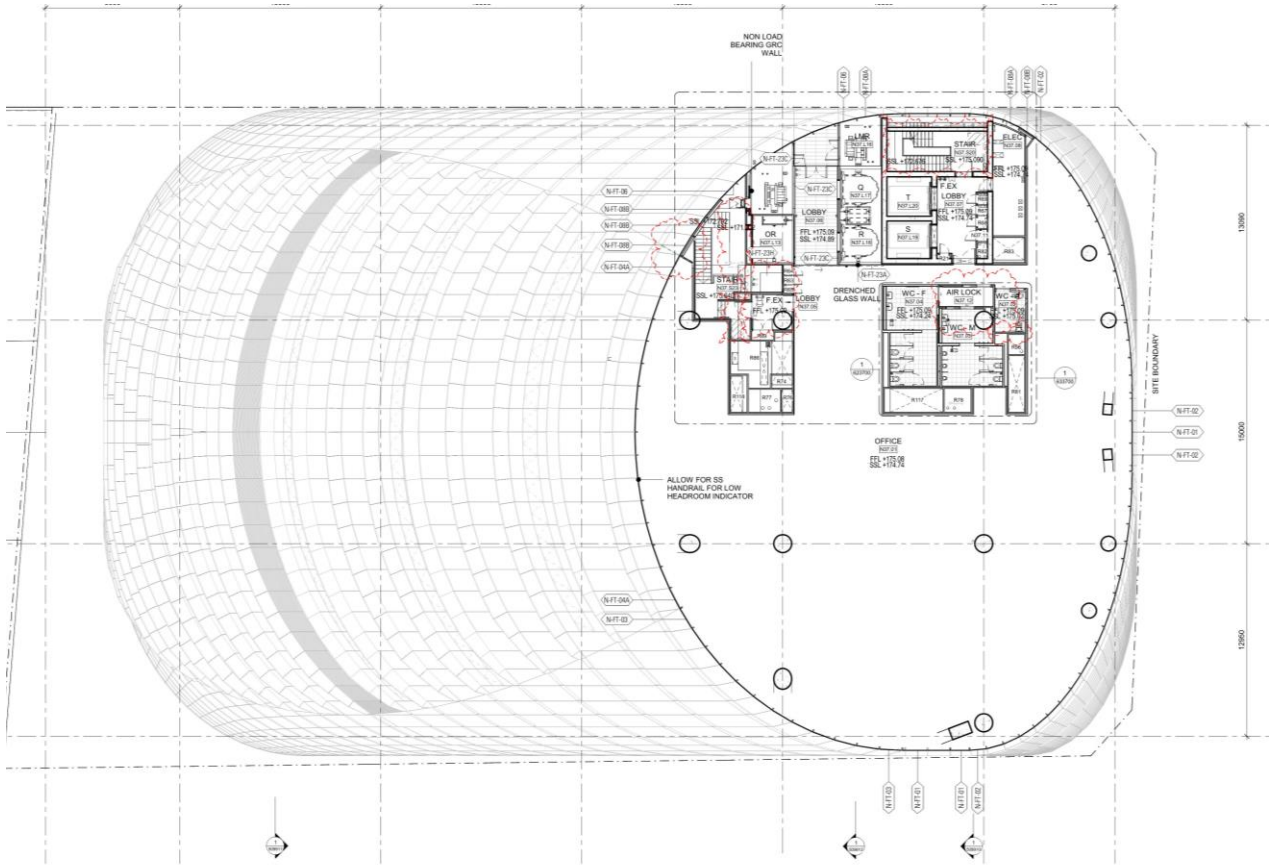
Level 37 Plan

MOD 5 plan with FC2 changes marked up

1.BOH revised



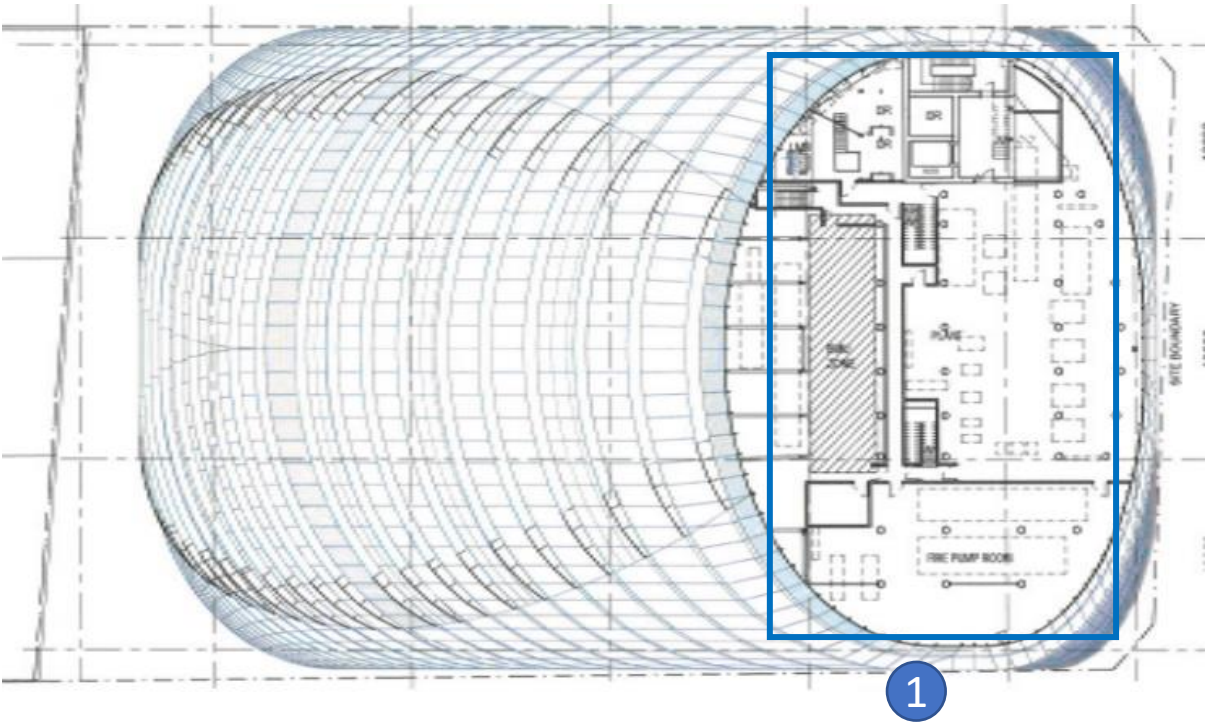
FC2 Drawing



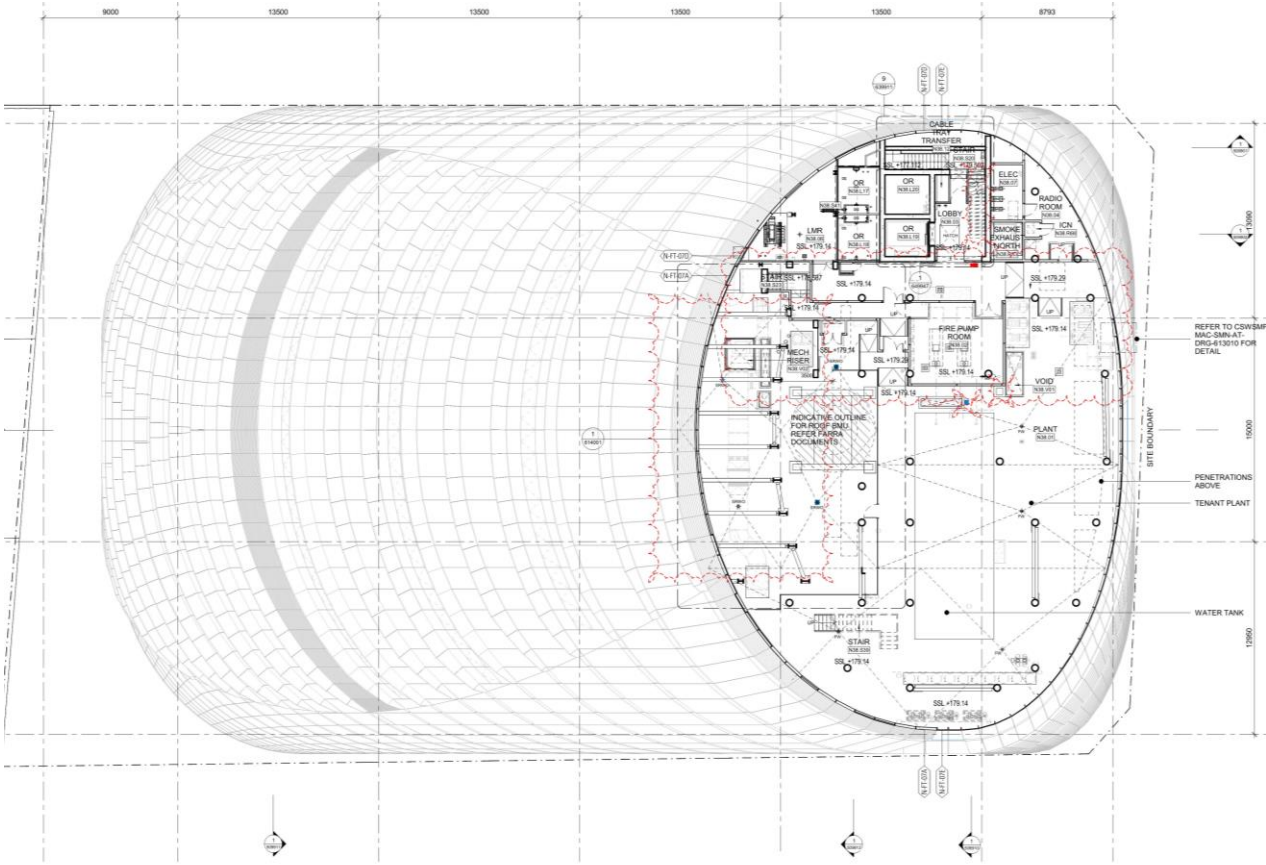
Lower Roof Plan

SSD 9270 plan with FC2 changes marked up

1.Plant layout revised



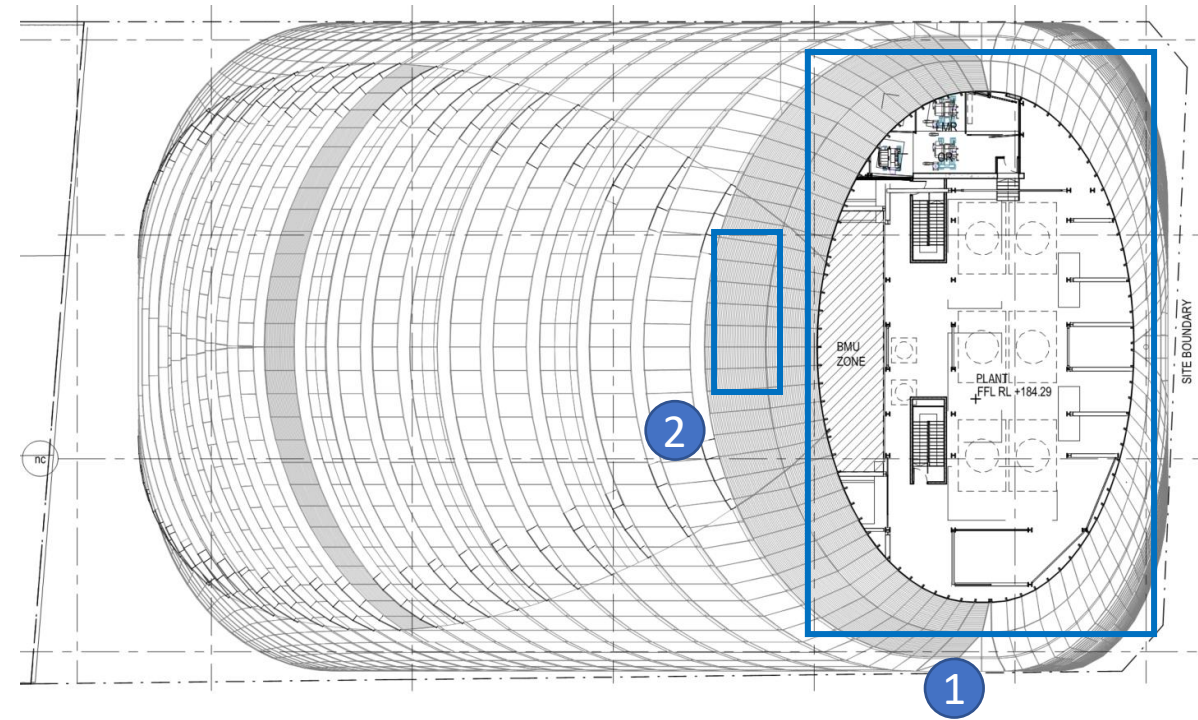
FC2 Drawing



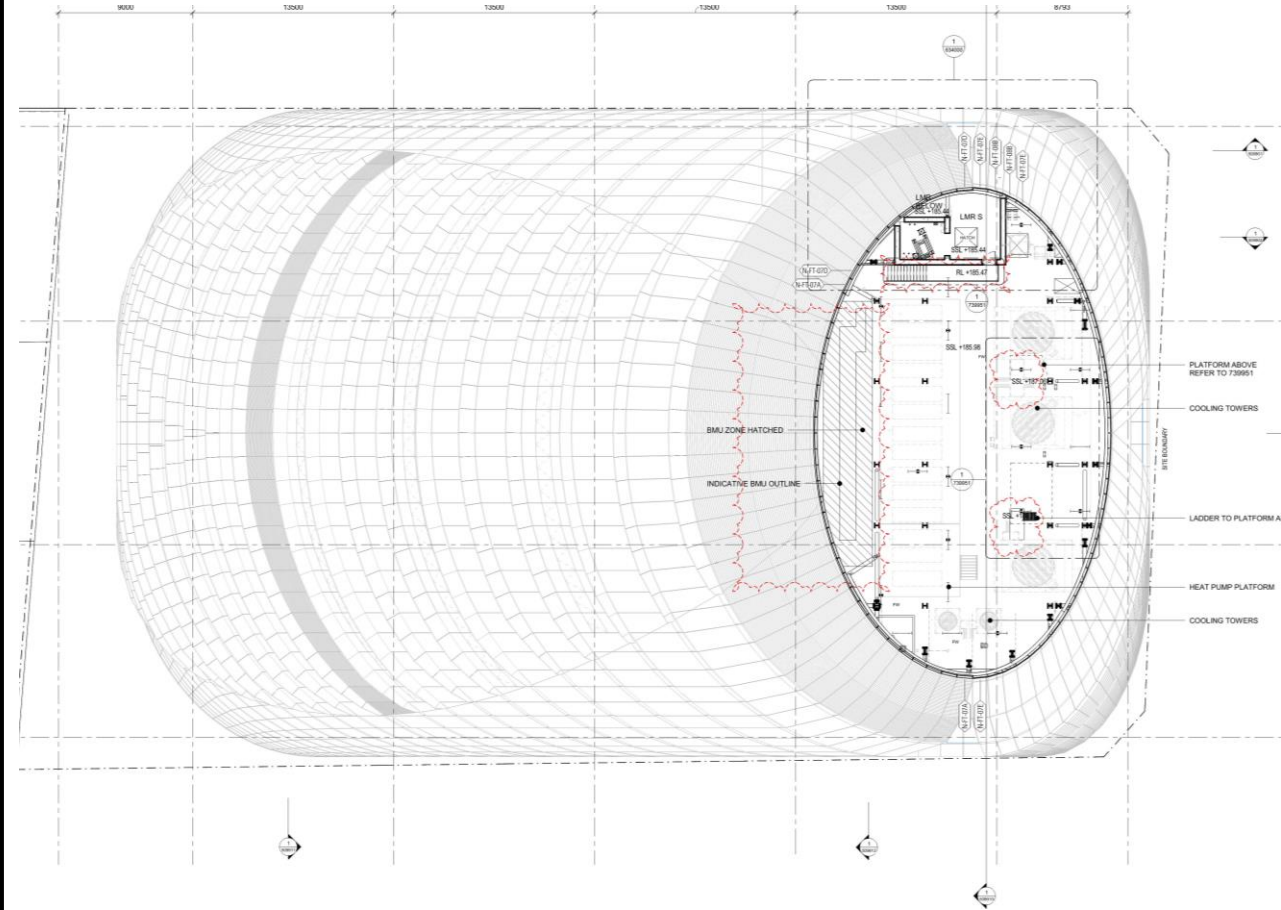
Upper Roof Plan

SSD 9270 plan with FC2 changes marked up

- 1.Plant layout revised
- 2.BMU hatch reduced



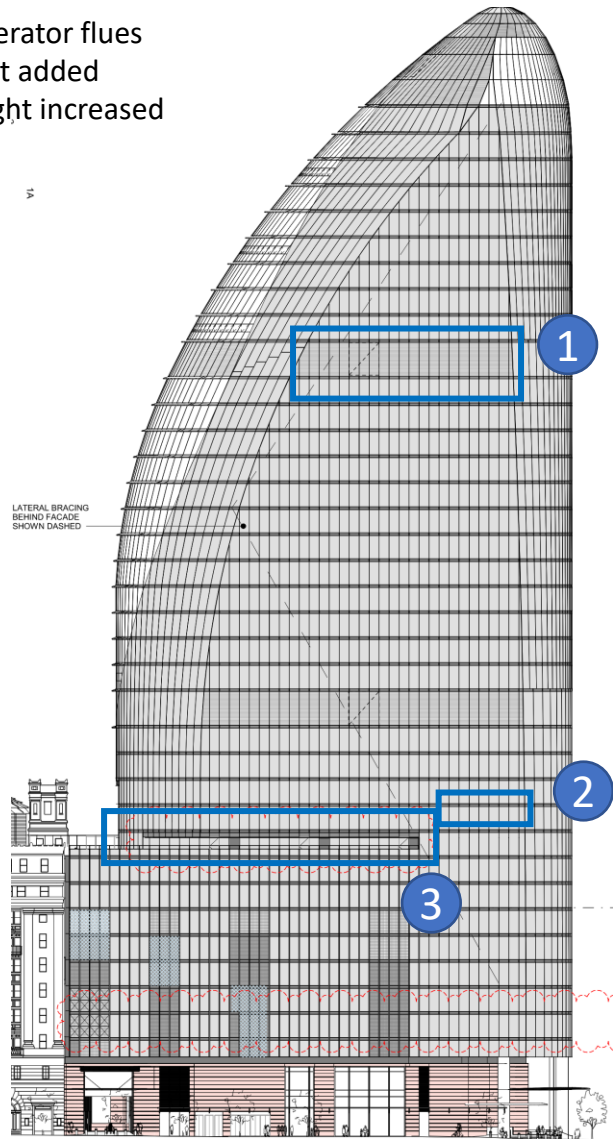
FC2 Drawing



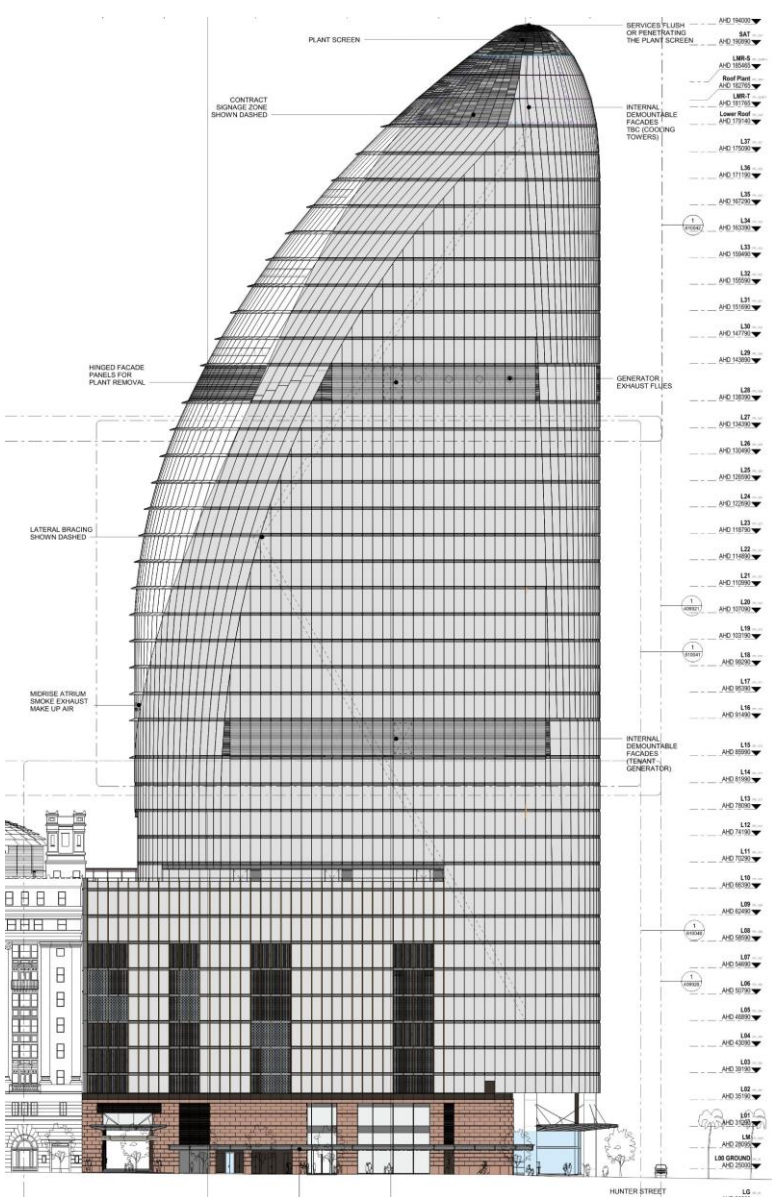
East Elevation

MOD 2 drawing with FC2 changes marked up

- 1.Additional generator flues
- 2.Kitchen exhaust added
- 3.Balustrade height increased

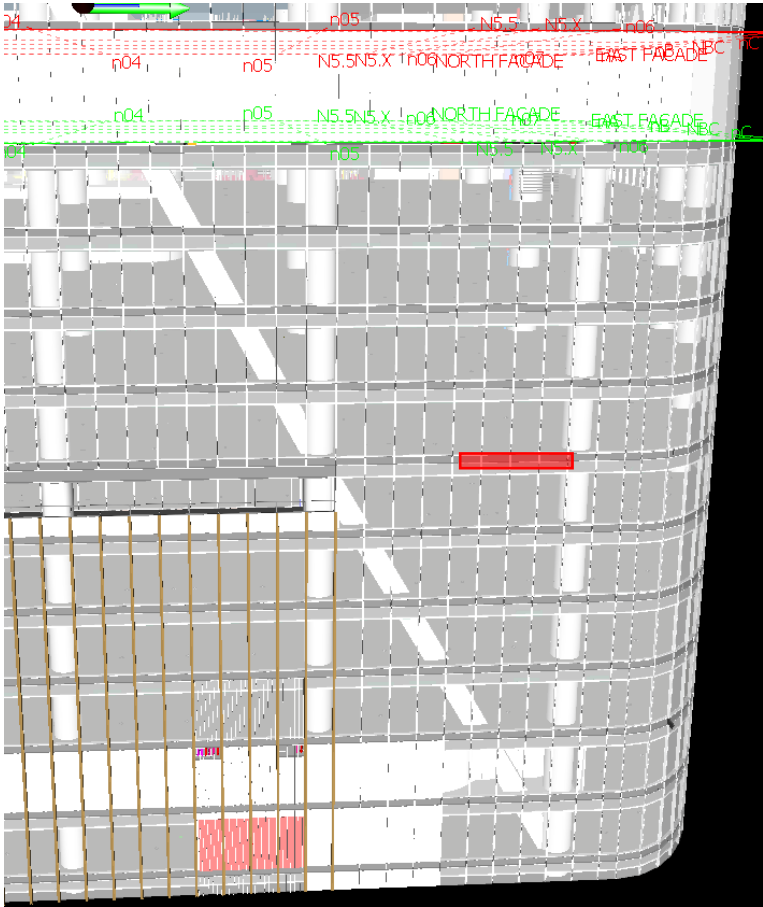


FC2 Drawing



East Elevation

Kitchen exhaust discharge



FC2 Drawing

