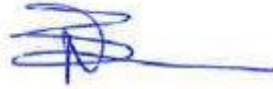


Modification of Development Consent

Section 4.55(1A) of the *Environmental Planning and Assessment Act 1979*

As delegate of the Minister for Planning, I approve the modification of the development consent referred to in Schedule 1, subject to the conditions in Schedule 2.



Nicole Brewer
Director
Energy Assessments

Sydney

23 August 2022

SCHEDULE 1

Development consent: SSD-9254 granted by the Executive Director on 24 February 2020.

For the following: Wollar Solar Farm

Modification: **SSD-9245-Mod-3:** Modification to facilitate an increase in AV/B-double vehicle movements and over-dimensional vehicle movements.

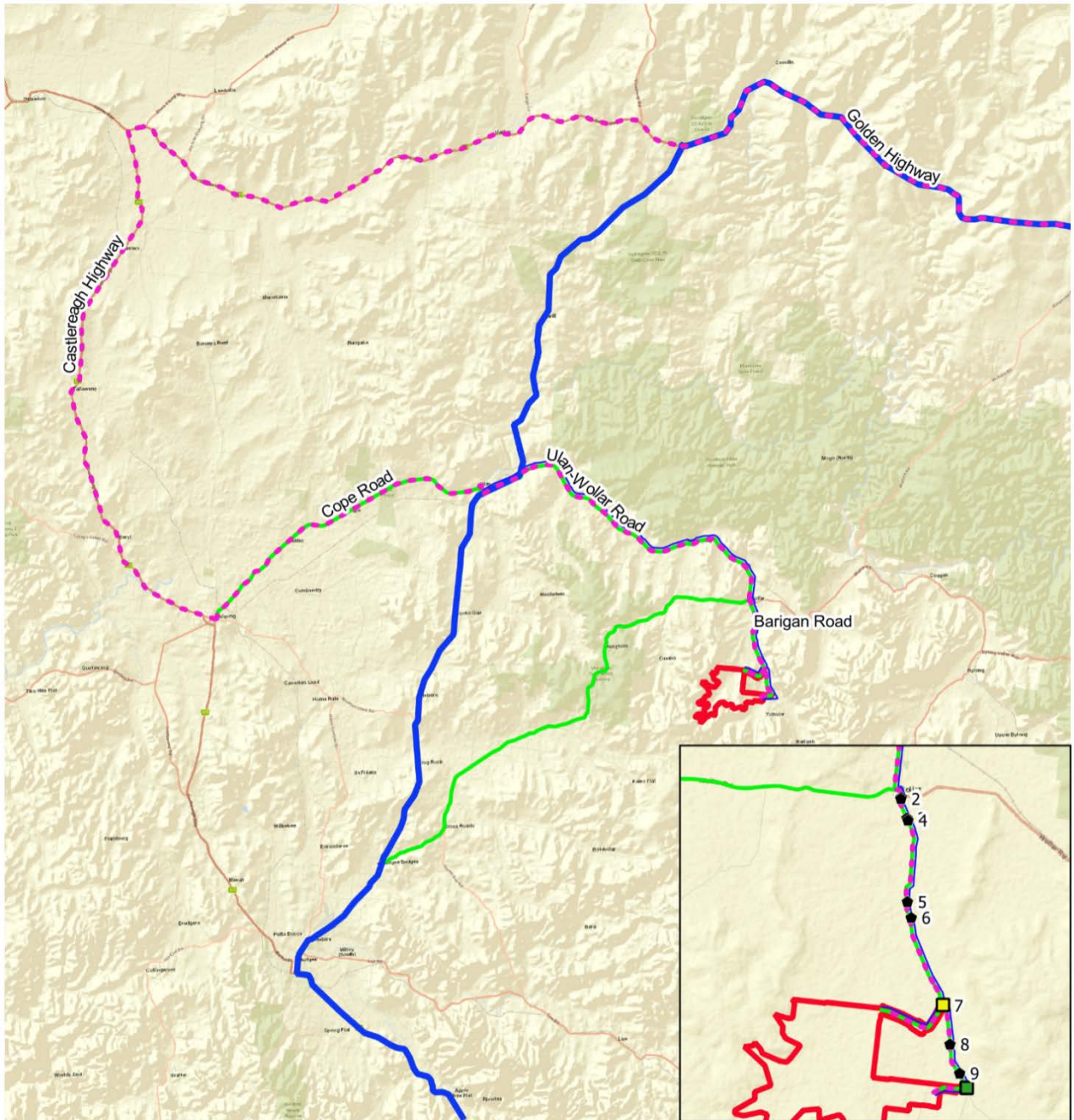
SCHEDULE 2

1. In the table of DEFINITIONS, delete the definitions for Department and Secretary and insert the following in alphabetical order:

| | |
|----------------------------------|---|
| Department Planning Secretary | Department of Planning and Environment Secretary of the Department, or nominee |
|----------------------------------|---|

2. In the table of DEFINITIONS:
 - in the definition of 'AV/B Double', replace '42.5 tonnes' with '62.5 tonnes'
 - in the definition of 'EIS', after 'August 2020', insert:
 - Modification Application: Wollar Solar Farm Modification Report, dated 17 June 2022; and
 - Wollar Solar Farm Modification 3 Submissions Report, dated 5 August 2022.
3. In Schedules 1 to 4 (inclusive), delete all references to 'Secretary' and replace with 'Planning Secretary'.
4. In condition 1(a) of Schedule 3,
 - in dot point 1 and 2, replace "26 AV/B-double vehicle movements a day during construction, upgrading and decommissioning; and 46 medium and/or heavy rigid vehicle movements a day during construction, upgrading and decommissioning;" with "a combined total of up to 72 medium, heavy rigid vehicle and/or AV/B-double movements a day during construction, upgrading and decommissioning, with a maximum of 36 AV/B-double vehicle movements a day." and
 - in dot point 3, replace '5' with '60'
5. In condition 1(b) of Schedule 3, replace '19 metres' with '26 metres'.
6. In condition 3 of Schedule 3, insert after 'AV/B-Double vehicles' and before 'associated with the development' with the following: '(with the exception of the two over-dimensional vehicles associated with the transport of the transformers)'
7. After condition 3(b) of Schedule 3, insert the following:

3A. The two over-dimensional vehicles associated with the transport of the transformers must travel to and from the site via Golden Highway, Castlereagh highway, Old Mill Road, Rouse Street, Station Street, Cope Road, Robinson Street, Mackay Street, Main Street, Ulan Road, Ulan-Wollar Road, Barigan Street, Maitland Street, Wollar Road and Barigan Road as identified in the figure in Appendix 3;
8. In condition 9(a) of Schedule 4, replace '2018' with '2020'.
9. In condition 10(b) of Schedule 4, after 'date', insert the following: 'to the satisfaction of the Planning Secretary'.
10. In Appendix 3 replace the figure with the following figure:



Site Access

Legend

Proposal Site
 Access points

Northern Access Point

Southern Access Point

Swept path locations

AV / B-double Access Route

Transformer haulage route

Shuttle Buses / MRV + HRV Access Route

0 5 10 15 km



Data Attribution
 © NGH 2022
 © Wollar Solar Development 2022
 © ESRI & QGIS 2022

Ref: 20-907 Wollar Solar Farm 220617 \ Site Access
 Author: kyle.m
 Date created: 12.08.2022
 Datum: GDA94 / MGA zone 56



**End of modification
 (SSD 9245 MOD 3)**