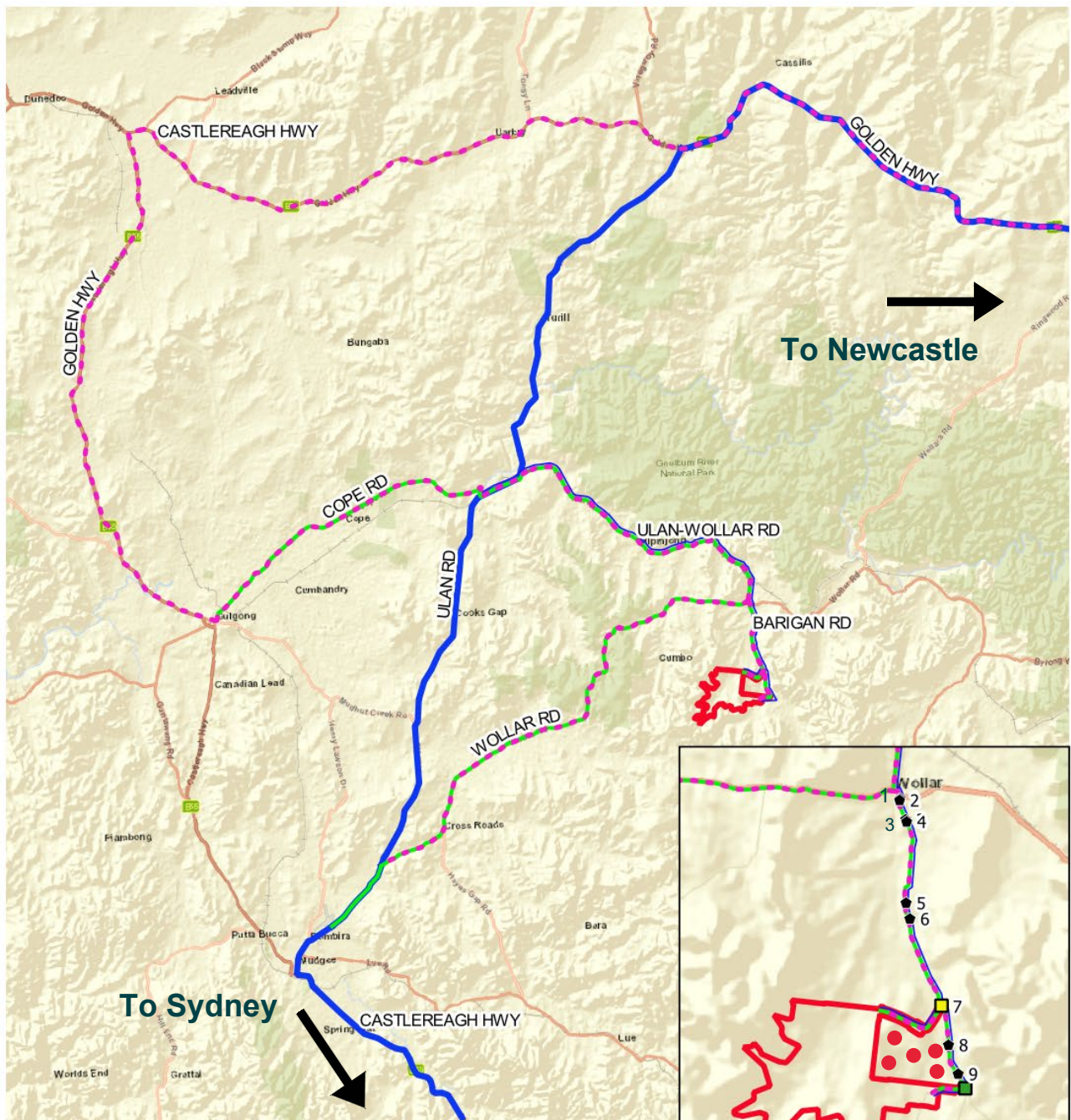


Appendix E Proposed haulage site access routes



Site Access



Data Attribution
 © NGH 2022
 © Wollar Solar Development 2022
 © ESRI & QGIS 2022
 Ref: 20-907 Wollar Solar Farm 220617 \ Site Access
 Author: alyce.g
 Date create: 17.06.2022
 Datum: GDA94 / MGA zone 56

Legend

- Proposal Site
- Development footprint
- Northern Access Point
- Southern Access Point
- ◆ Swept path locations
- AV / B-double Access Route
- OSOM transformer haulage route
- Shuttle Buses / MRV + HRV Access Route

