

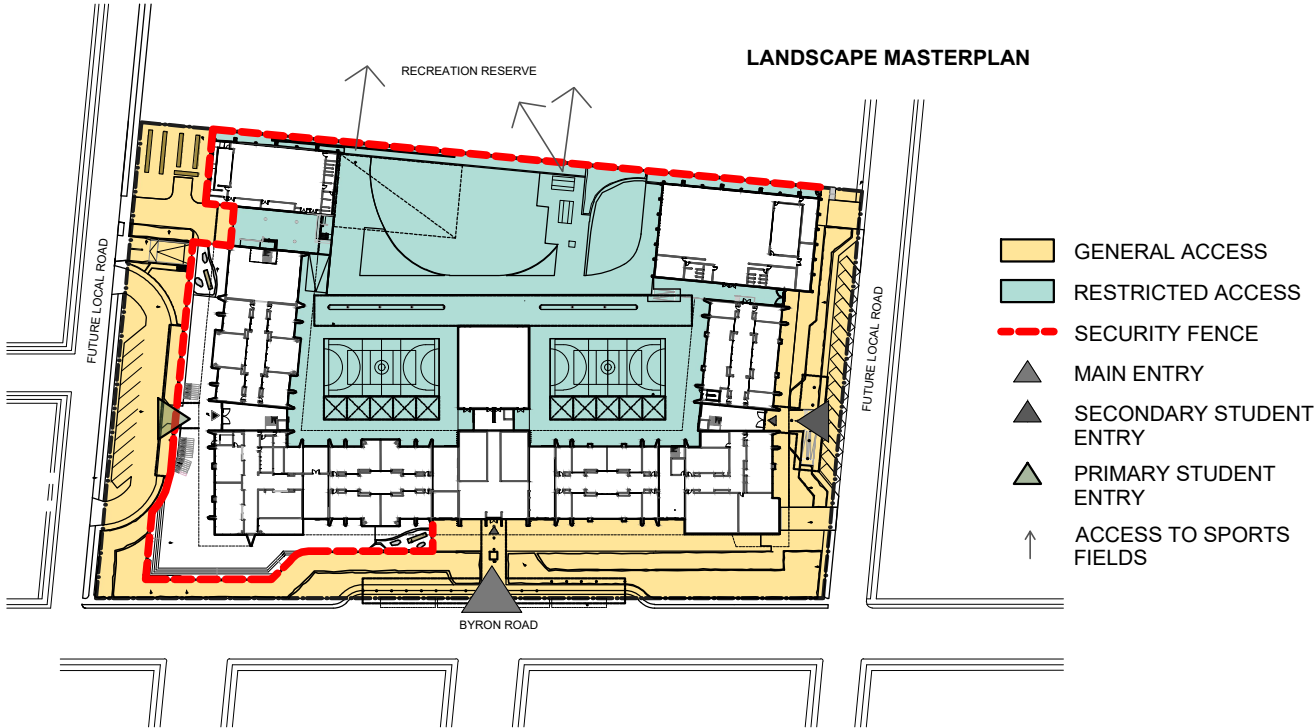
DRAWING SCHEDULE

- LC00 - K23503 - COVER SHEET
- LC1/6 - K23503 - LANDSCAPE PRINCIPLES
- LC2/6 - K23503 - LANDSCAPE MASTERPLAN
- LC3/6 - K23503 - LANDSCAPE - OVAL
- LC4/6 - K23503 - LIBRARY TERRACE / PLANT SCHEDULE
- LC5/6 - K23503 - LANDSCAPE STAGEING PLAN
- LC6/6 - K23503 - LANDSCAPE STAGEING PLAN

		N°	DESCRIPTION	DATE		SCALE	DRAWN BY	CHECKED BY	DATE	 Michael Siu Landscape Architects PO Box 550 Hurstville NSW 1481 michael@msla.com.au 02 9557 9833 0417 280 249	PROJECT
		A	ISSUE FOR DA	28 - 05 -19		1 : 100@A3	JG	MS	FEB 2019		AMITY COLLEGE LEPPINGTON
		B	ISSUE FOR UPDATE	09 - 12 -20		PROJ. No	DRAWING No.	REV.			TITLE
						K23503	LC00	A			COVER SHEET

LANDSCAPE PRINCIPLES

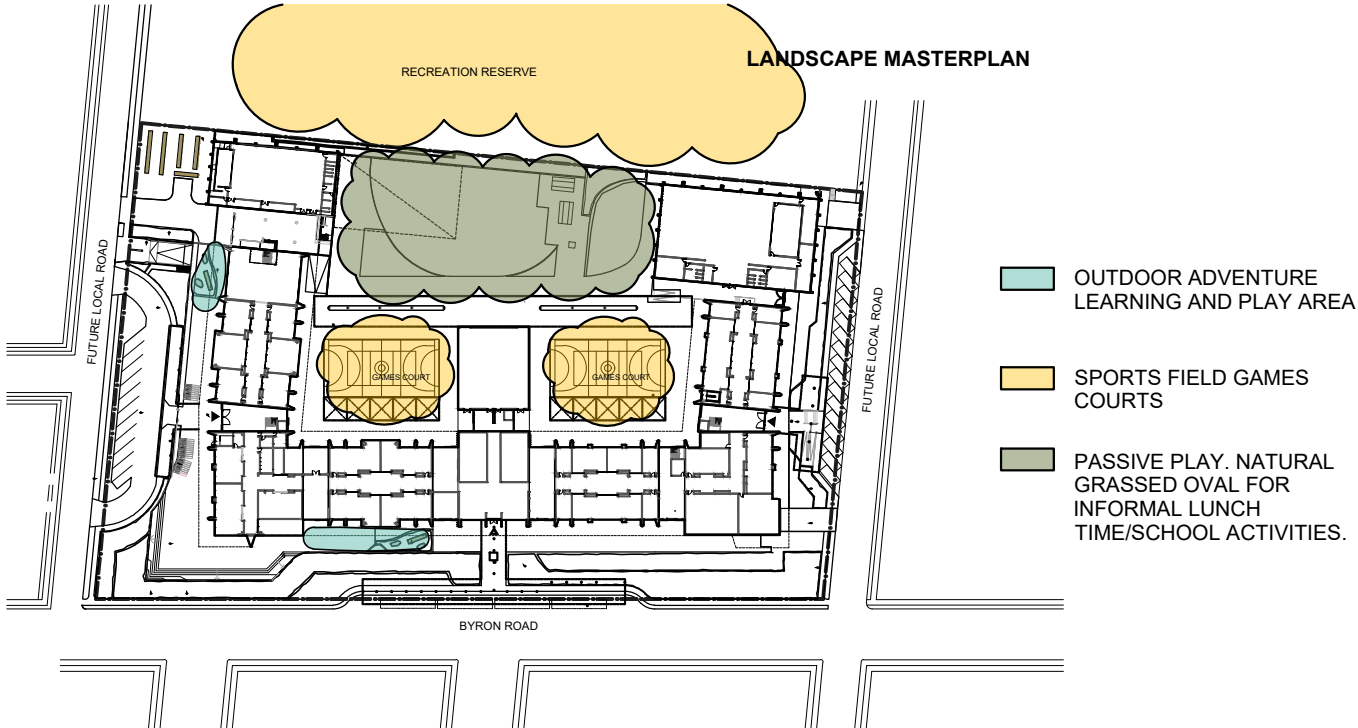
1. ACCESS



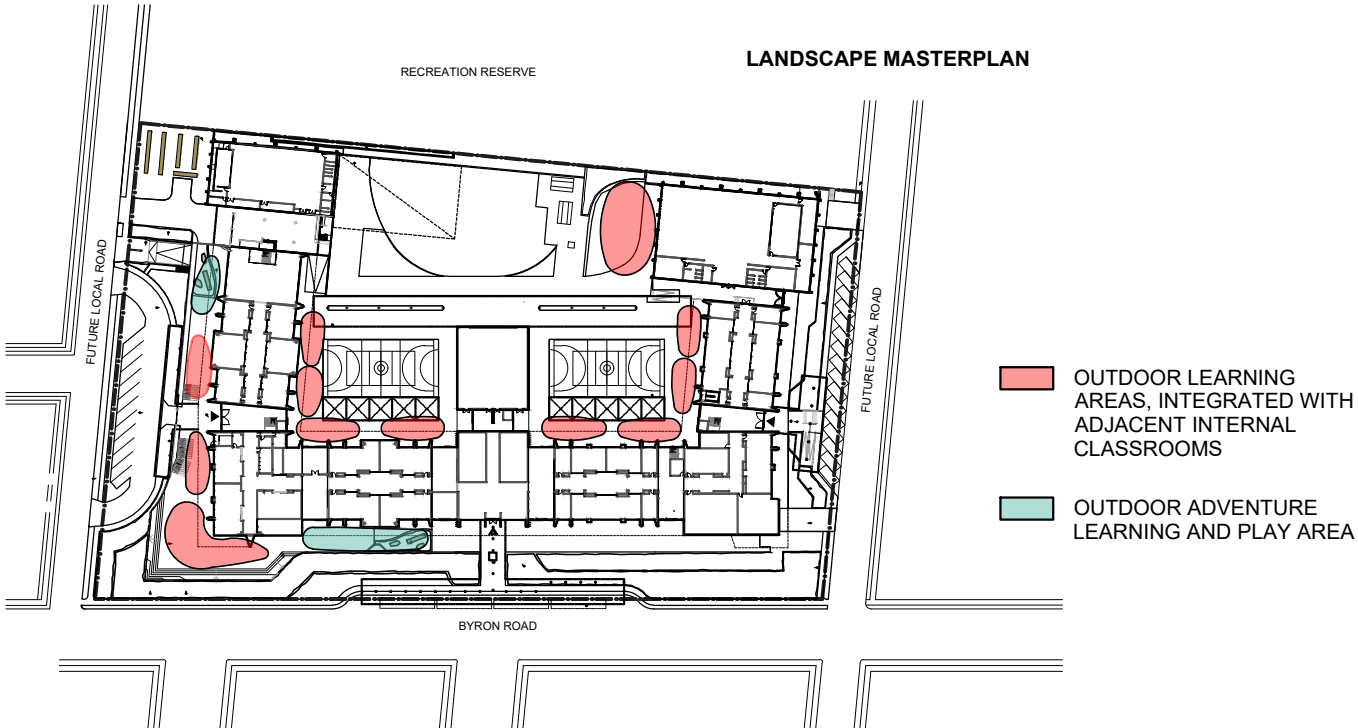
2. TREE CANOPY







3. ACTIVE AND PASSIVE PLAY



4. OUTDOOR LEARNING



<div> ON ORIGINAL SHEET</div> <div></div>		N°	DESCRIPTION	DATE		SCALE	DRAWN BY	CHECKED BY	DATE	<div> Michael Siu Landscape Architects PO Box 550 Hurstville NSW 1481 michael@msla.com.au 02 9557 9833 0417 280 249</div>	PROJECT
		A	ISSUE FOR DA	28 - 05 -19		AS SHOWN	JG	MS	FEB 2019		AMITY COLLEGE LEPPINGTON
		B	ISSUE FOR UPDATE	09 -12 -20		PROJ. No	DRAWING No.	REV.	85 Byron Road, Leppington NSW		
		C	ISSUE FOR STAGE I CC	03 - 03 -21							K23503
										LANDSCAPE PRINCIPLES	

LANDSCAPE MASTERPLAN

PLAYGROUND
CANOPY OVER

KITCHEN GARDEN
AREA

INDIGENOUS CANOPY TREES
AROUND PERIMETER OF SCHOOL
EUCALYPTUS TERETICORNIS
EUCALYPTUS MOLUCANNA
MELALEUCA LINARIIFOLIA
(CUMBERLAND PLAIN WOODLAND
SPECIES)

ENTRY RAMP TO
BASEMENT PARKING

OUTDOOR LEARNING AND
ADVENTURE PLAY AREA

NATIVE & EXOTIC UNDER
STOREY SHRUBS &
GROUNDCOVERS
MAXIMUM. MATURE HT
1.0m TO ENABLE CASUAL
SURVEILLANCE AND NOT
OBSTRUCT SIGHT LINES

PRIMARY STUDENT
ENTRY, CANOPY
STRUCTURE OVER

PRIMARY DROP OFF

EXOTIC DECIDUOUS
CANOPY TREES TO
IDENTIFY STUDENT
ENTRY

STREET TREE PLANTING
AS PER APPENDIX C -
CAMDEN GROWTH
CENTRE PRECINCT DCP-
(JACARANDA
MIMOSIFOLIUS)

TERRACED
COURTYARD FOR
SCHOOL FUNCTIONS
AND ACTIVITIES

NATIVE & EXOTIC UNDER
STOREY SHRUBS &
GROUNDCOVERS
MAXIMUM. MATURE HT
1.0m TO ENABLE CASUAL
SURVEILLANCE AND NOT
OBSTRUCT SIGHT LINES

INDIGENOUS CANOPY TREES
AROUND PERIMETER OF SCHOOL
EUCALYPTUS TERETICORNIS
EUCALYPTUS MOLUCANNA
MELALEUCA LINARIIFOLIA
(CUMBERLAND PLAIN WOODLAND
SPECIES)

RECREATION RESERVE

OSD TANK BELOW

TIERED
RETAINING WALL

OVAL - REFER
DETAIL PLAN
SHEET 3

PRIMARY SCHOOL
PLAY GROUND

SECONDARY SCHOOL
PLAY GROUND

KITCHEN
CAFE

LEVEL 1 OVER

PRIMARY SCHOOL

ADMINISTRATION
MAIN ENTRANCE

SECONDARY SCHOOL

LEVEL 1 OVER

BYRON ROAD

OUTDOOR LEARNING AND
ADVENTURE PLAY AREA

ENTRY CANOPY

EXOTIC DECIDUOUS CANOPY TREES
TO IDENTIFY MAIN ENTRANCE

WATER FEATURE

STREET TREE PLANTING AS PER
APPENDIX C - CAMDEN GROWTH
CENTRE PRECINCT DCP-
(BRACHYCHON ACERIFOLIUS)

PLAYGROUND
CANOPY OVER

INDIGENOUS CANOPY TREES
AROUND PERIMETER OF SCHOOL
EUCALYPTUS TERETICORNIS
EUCALYPTUS MOLUCANNA
MELALEUCA LINARIIFOLIA
(CUMBERLAND PLAIN WOODLAND
SPECIES)

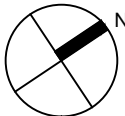
SECONDARY STUDENT ENTRY,
CANOPY STRUCTURE OVER

EXOTIC DECIDUOUS
TREES

ENTRY RAMP TO BASEMENT
CARPARK

NATIVE & EXOTIC UNDER
STOREY SHRUBS &
GROUNDCOVERS
MAXIMUM. MATURE HT
1.0m TO ENABLE CASUAL
SURVEILLANCE AND NOT
OBSTRUCT SIGHT LINES

0 m 20 m



N°	DESCRIPTION	DATE
A	ISSUE FOR DA	28 - 05 -19
B	ISSUE FOR UPDATE	09 - 12 -20
C	ISSUE FOR STAGE I CC	01 - 03 -21

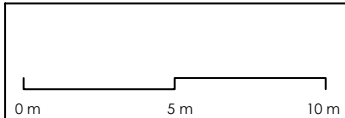
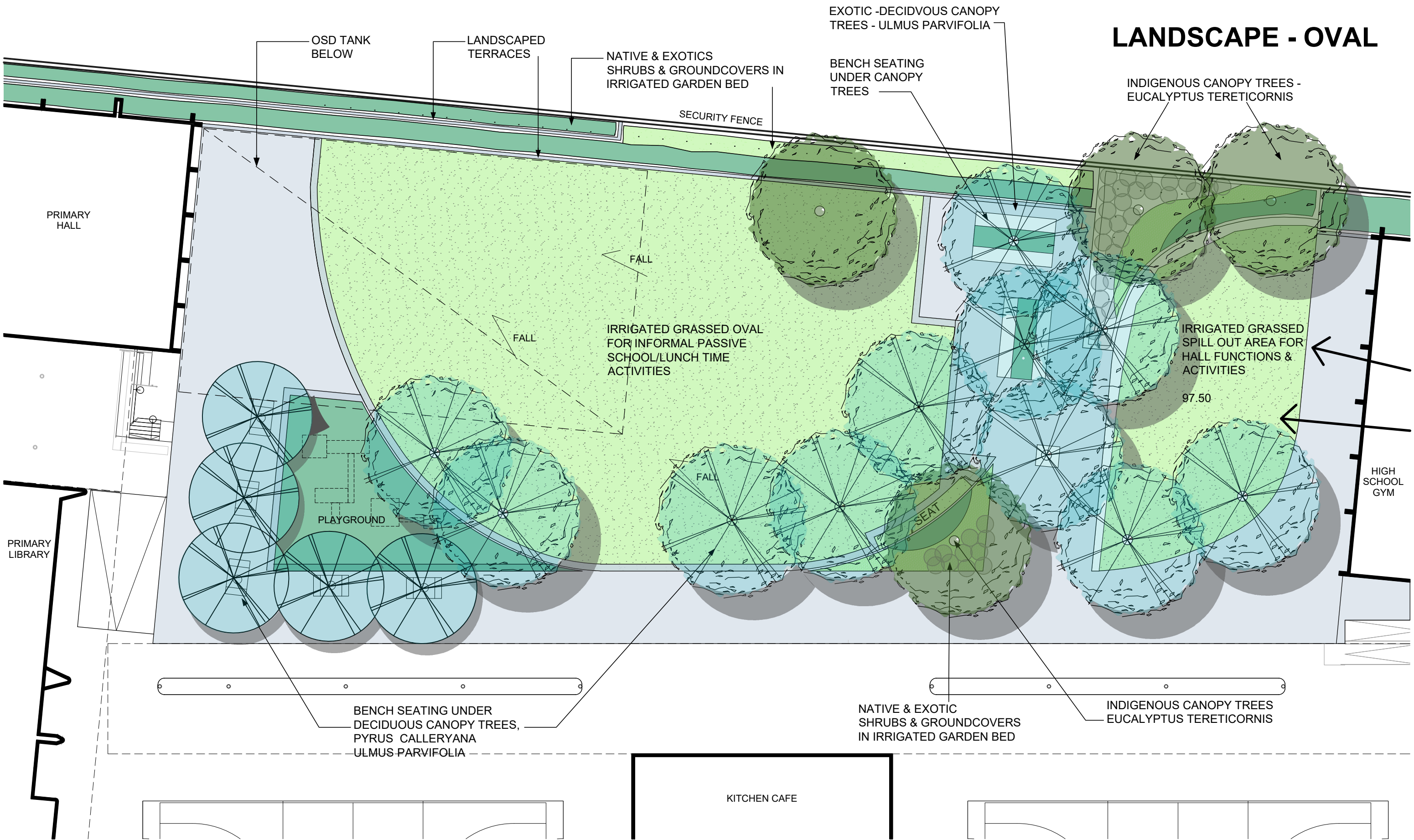


SCALE	DRAWN BY	CHECKED BY	DATE
1 : 750@A3	JG	MS	FEB 2019
PROJ. No	DRAWING No.	REV.	
K23503	LC2/6	C	



PROJECT
AMITY COLLEGE LEPPINGTON 85 Byron Road, Leppington NSW
TITLE
LANDSCAPE MASTERPLAN

LANDSCAPE - OVAL



Nº	DESCRIPTION	DATE
A	ISSUE FOR DA	28 - 05 - 19
B	ISSUE FOR UPDATE	09 - 12 - 20
C	ISSUE FOR STAGE I CC	01 - 03 - 21



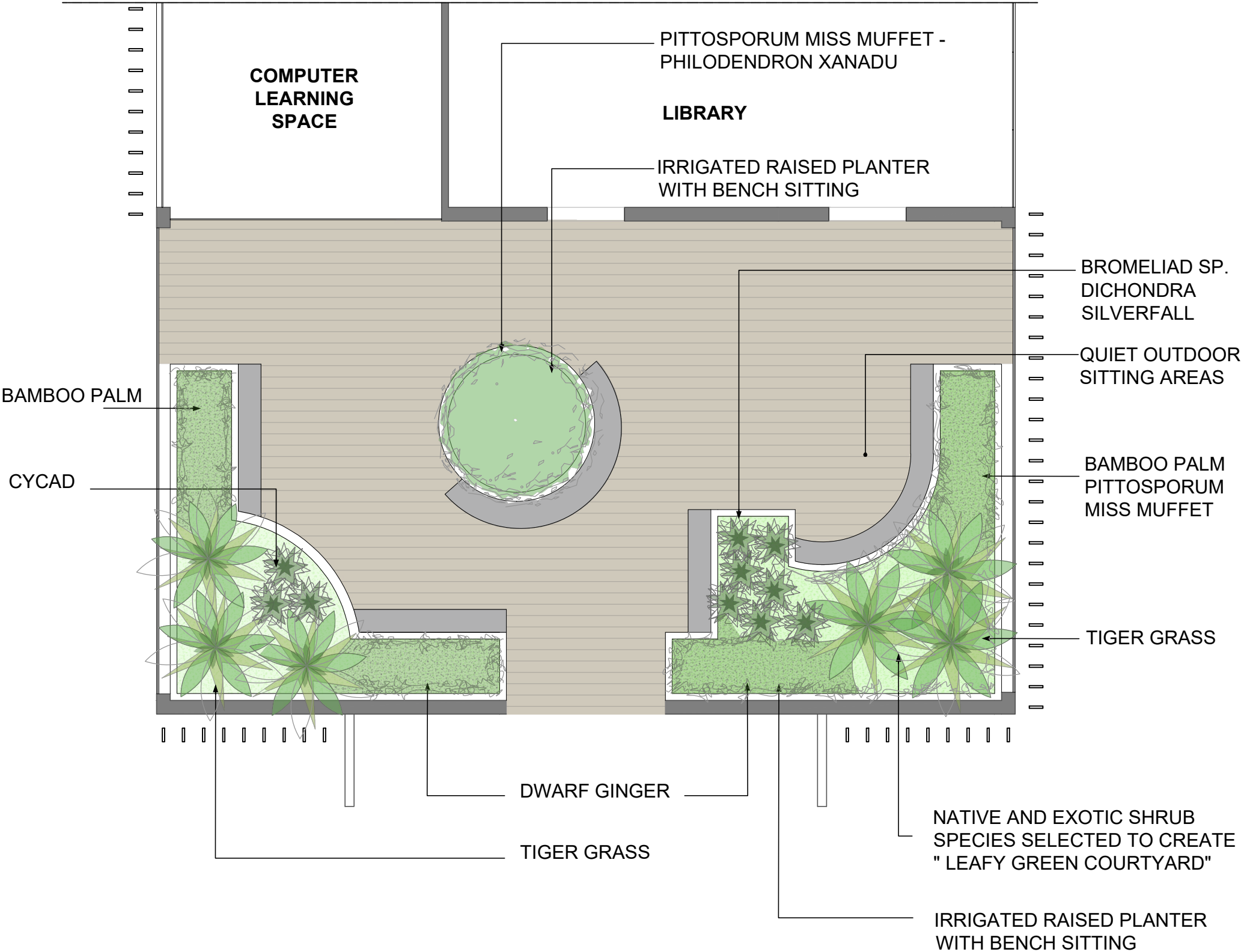
SCALE	DRAWN BY	CHECKED BY	DATE
1 :250@A3	JG	MS	FEB 2019
PROJ. No	DRAWING No.	REV.	
K23503	LC3/6	C	



Michael Siu
Landscape Architects
PO Box 550 Hurstville NSW 1481
michael@msla.com.au
02 9557 9833 | 0417 280 249

PROJECT	AMITY COLLEGE LEPPINGTON
	85 Byron Road, Leppington NSW
TITLE	LANDSCAPE - OVAL

LIBRARY TERRACE & PLANT SCHEDULE



INDICATIVE PLANTING SCHEDULE

Name	Mt Size	Pot Size	Density	Qty
Canopy Trees				
Eucalyptus tereticornis*	Forest red gum	18m+	200Litre	As indicated 30No.
Eucalyptus molucana*	Grey Box	18m+	200Litre	As indicated 30No.
Melaleuca linariifolia*	Snow in Summer	10+	200Litre	As indicated 20No.
Pyrus ussuriensis	Ornamental Pear	8m	200Litre	As indicated 5No
Ulmus parvifolia	Chinese Elm	8m	200Litre	As indicated 3No.
Lagerstroemia indica	Crepe Myrtle	6m	200Litre	As indicated 8No.
Sapium sebiferum	Chinese tallowood	8m	200Litre	As indicated 2No.

* Indigenous Cumberland Plain Woodland Species

Shrubs and Ground Covers

Acacia 'Dazzler'*	Dazzler	0.8m	200mm	3/m2	700No.
Correa alba*	White Correa	1.0m	200mm	3/m2	700No.
Dianella caerulea Breeze*	Paroo Lily	0.6m	100mm	5/m2	650No.
Dichondra 'Silver Falls'*	'Silver Falls'	GCover	150mm	5/m2	650No.
Diets grandifolia	Fortnight Lily	1.0m	150mm	5/m2	650No.
Doryanthes excelsa*	Gymea Lily	1.5m	300mm	As indicated	100No.
Lomandra tanika*	Tanika	0.8m	150mm	5/m2	650No.
Lomandra verday*	Verday	0.6m	150mm	5/m2	650No.
Melaleuca 'Claret Tops'*	Claret Tops	0.8m	200mm	3/m2	700No.
Myoporum 'Yareena'*	Creeping Myoporum	GCover	150mm	5/m2	650No.
Phylodendron 'Xanadu'	Xanadu	0.5m	200mm	3/m2	700No.
Pittosporum 'Miss Muffet'	Miss Muffet	0.8m	200mm	2/m2	700No.
Poa labillardierii 'Eskdale'*	Tussock Grass	0.5m	100mm	5/m2	650No.
Themeda australis*	Kangaroo Grass	0.5m	100mm	6/m2	650No.
Trachelospermum jasminoides	Star Jasmine	GCover	200mm	5/m2	650No.
Westringia 'Aussie Box'*	Aussie Box	0.8m	200mm	3/m2	700No.

*Native low water usage species

Library Courtyard

Alpina nutans	Dwarf Ginger	1.0m	35Litre	As indicated	15No.
Bromeliad alcantarea	Giant Bromeliad	1.0m	35Litre	As indicated	10No.
Cycas revoluta	Cycad	1.0m	35Litre	As indicated	3No.
Dichondra Silver Falls	Silver Falls	GCover	150mm	5/m2	20No.
Phylodendron 'Xanadu'	Xanadu	0.5m	200mm	3/m2	10No.
Pittosporum Miss Muffet	Miss muffet	0.8m	200mm	2/m2	10No.
Rhaphis excelsa	Bamboo Palm	2.0m	300mm	1/m2	6No.
Thysanolaena maxima	Tiger Grass	3.0m	75Litre	As indicated	6No.

Amity College Leppington – 85 Byron Road Leppington

April 2018

STAGE 1



- Land Remediation
 - Implementation of Landscape Masterplan Stage 1
 - Temporary Landscape Treatment Stage 1
 - Tree to be removed
1. COMPLETE REMAINING PORTION OF ROAD AND FOOTPATH RESERVE (INCLUDES WORKS RELATING TO CONNECTION WITH BYRON ROAD)
 2. LOADING ZONE
 3. DROP OFF PARKING AND LANDSCAPING
 4. EXCLUSION ZONE FOR WORKS RELATING TO FUTURE PLAY FIELD AND LANDSCAPING
 5. TEMPORARY PLAY FIELD/ OVAL
 6. FACILITIES - MAINTENANCE/ CONSTRUCTION (DEMOUNTABLE)
 7. DRIVEWAY TO BASEMENT PARKING
 8. LANDSCAPING AND OUTDOOR LEARNING AREAS
 9. TWO STOREY PRIMARY HOME BASE MODULES WITH BASEMENT PARKING BELOW AND LINKS
 10. DEMOLISH EXISTING BUILDINGS
 11. TEMPORARY MAINTENANCE AND CONSTRUCTION PARKING
 12. ONSITE DETENTION TANK
 13. LANDSCAPED COUTRYARD WITH TREE PLANTING AND GRASS
 14. PRIMARY COURTYARD WORKS
 15. SUBSTATION
 16. TERRACED LEARNING AREA EXCAVATION AND LANDSCAPING
 17. SLAB ON TOP OF BASEMENT AND GRASSED BATTER
 18. RETAINING WALLS FOR FUTURE TERRACED LADNSCAPING ALONG THE BOUNDARY
- NOTE:
1. LANDSCAPING REFERS TO ROAD AND SOFT WORKS
2. SOIL, REMEDIATION, EXCAVATION AND FILL AS REQUIRED

STAGE 2



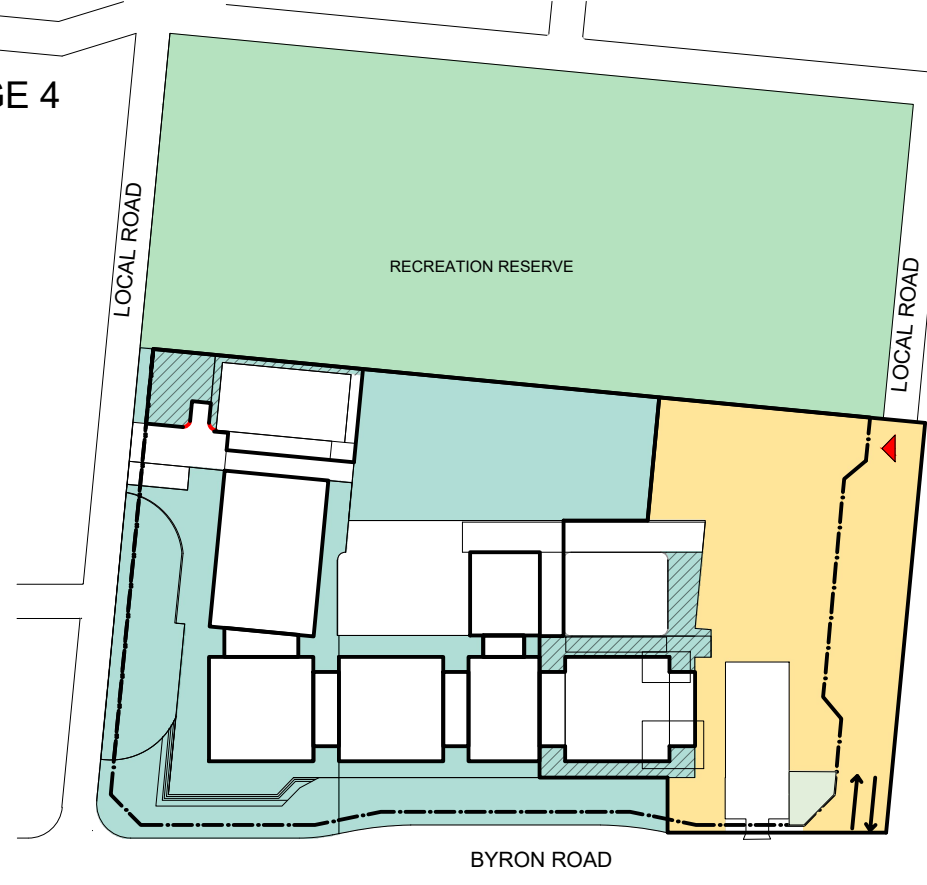
- Temporary Landscape Treatment Stage 1
 - Temporary Landscape Treatment Stage 2
 - Land Remediation
 - Stage 1 Landscape works
 - Implementation of Landscape Masterplan Stage 2
- STAGE 2
1. TWO STOREY PRIMARY HOME BASE MODULE WITH LINKS
 2. LANDSCAPING AND OUTDOOR LEARNING AREAS
 3. MODIFIED TEMPORARY PLAY AREA OVAL
 4. BUS BAY, MAIN STREET ENTRY AND LANDSCAPING
- PREVIOUS STAGE
- NOTE:
1. LANDSCAPING REFERS TO ROAD AND SOFT WORKS
2. SOIL, REMEDIATION, EXCAVATION AND FILL AS REQUIRED

STAGE 3

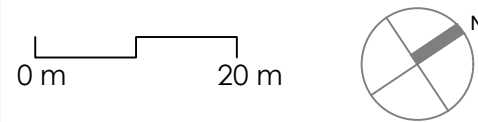


- Stage 1 - 2 Landscape works
 - Implementation of Landscape Masterplan Stage 3
 - Temporary Landscape Treatment Stage 1 - 2
 - Land Remediation
- TYPICAL CONSTRUCTION LEGEND
- FENCING
 - TRAFFIC IN
 - TRAFFIC OUT
 - TRAFFIC ENTRY / CROSSOVER
- STAGE 3
1. MAIN ENTRY LANDSCAPING AND CANOPY
 2. FOUR STOREY BUILDING: ADMINISTRATION AND COMMUNITY FACILITIES
 3. THREE STOREY BUILDING: CAFE AND SECONDARY LIBRARY WITH LINK
 4. PLAY FIELD AREA AND LANDSCAPING
- PREVIOUS STAGE
- NOTE:
1. LANDSCAPING REFERS TO ROAD AND SOFT WORKS
2. SOIL, REMEDIATION, EXCAVATION AND FILL AS REQUIRED

STAGE 4



- Stage 1 - 3 Landscape works
 - Implementation of Landscape Masterplan Stage 4
 - Temporary Landscape Treatment Stage 1 - 3
 - Land Remediation
- TYPICAL CONSTRUCTION LEGEND
- FENCING
 - TRAFFIC IN
 - TRAFFIC OUT
 - TRAFFIC ENTRY / CROSSOVER
- STAGE 4
1. PRIMARY HALL
 2. KITCHEN GARDEN
 3. SECONDARY PLAY COURT
 4. SECONDARY THREE STOREY LEARNING AREA MODULE WITH LINKS
 5. LANDSCAPING
 6. REMOVE DEMOUNTABLES
 7. CANOPY STRUCTURES
- PREVIOUS STAGE
- NOTE:
1. LANDSCAPING REFERS TO ROAD AND SOFT WORKS
2. SOIL, REMEDIATION, EXCAVATION AND FILL AS REQUIRED



Nº	DESCRIPTION	DATE
A	ISSUE FOR DA	28 - 05 -19
B	ISSUE FOR UPDATE	10 - 12 -20

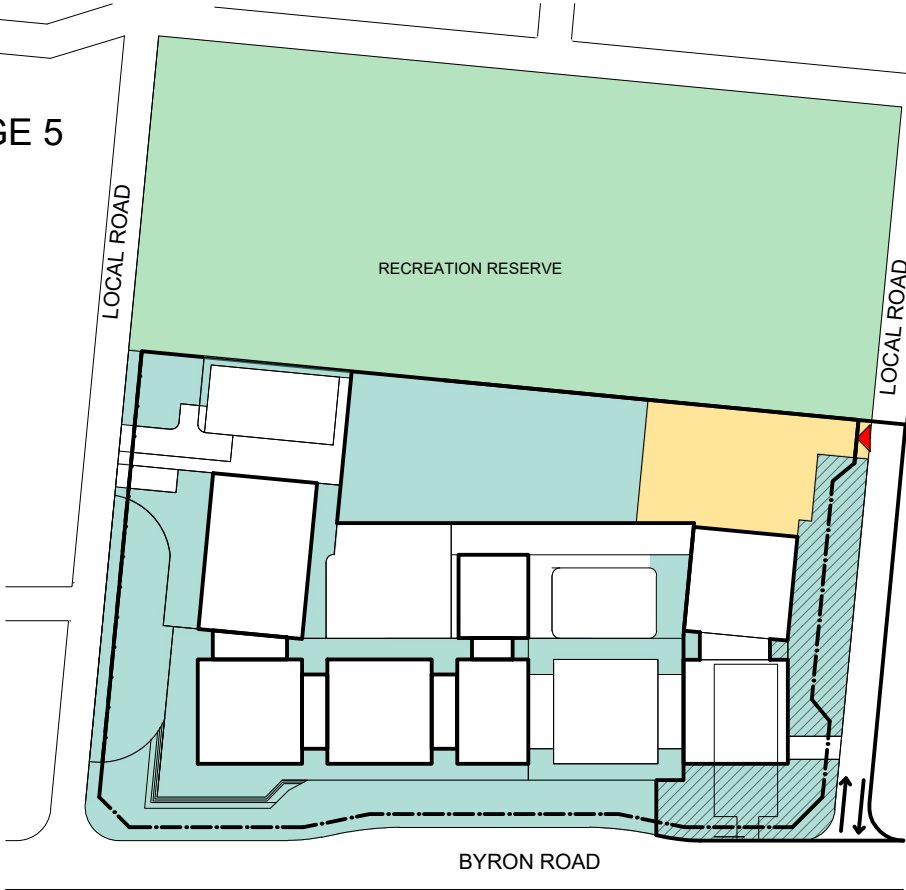


SCALE	DRAWN BY	CHECKED BY	DATE
1 : 2000@A3	JG	MS	NOV 2020
PROJ. No	DRAWING No.	REV.	
LC5/6 - K23503		A	


Michael Siu
Landscape Architects
PO Box 550 Hurstville NSW 1481
michael@msla.com.au
02 9557 9833 | 0417 280 249

PROJECT	AMITY COLLEGE LEPPINGTON
	85 Byron Road, Leppington NSW
TITLE	LANDSCAPE MASTER PLAN

STAGE 5



- Stage 1 - 4
Landscape works

Implementation of Landscape
Masterplan Stage 5

Land Remediation
- FENCING

TRAFFIC IN

TRAFFIC OUT

TRAFFIC ENTRY / CROSSOVER
- STAGE 5**

 1. CONSTRUCT LOCAL ROAD (INCLUDES WORKS RELATING
 2. SECONDARY DROP OFF AND LANDSCAPING
 3. SECONDARY THREE STOREY LEARNING AREA MODULE WITH BASEMENT PARKING AND LINKS TO CONNECTION WITH BYRON ROAD)
 4. FINAL LANDSCAPING TO COURTYARD
 5. DRIVEWAY TO BASEMENT PARKING
 6. REMOVE TEMPORARY CONSTRUCTION AND MAINTENANCE PARKING

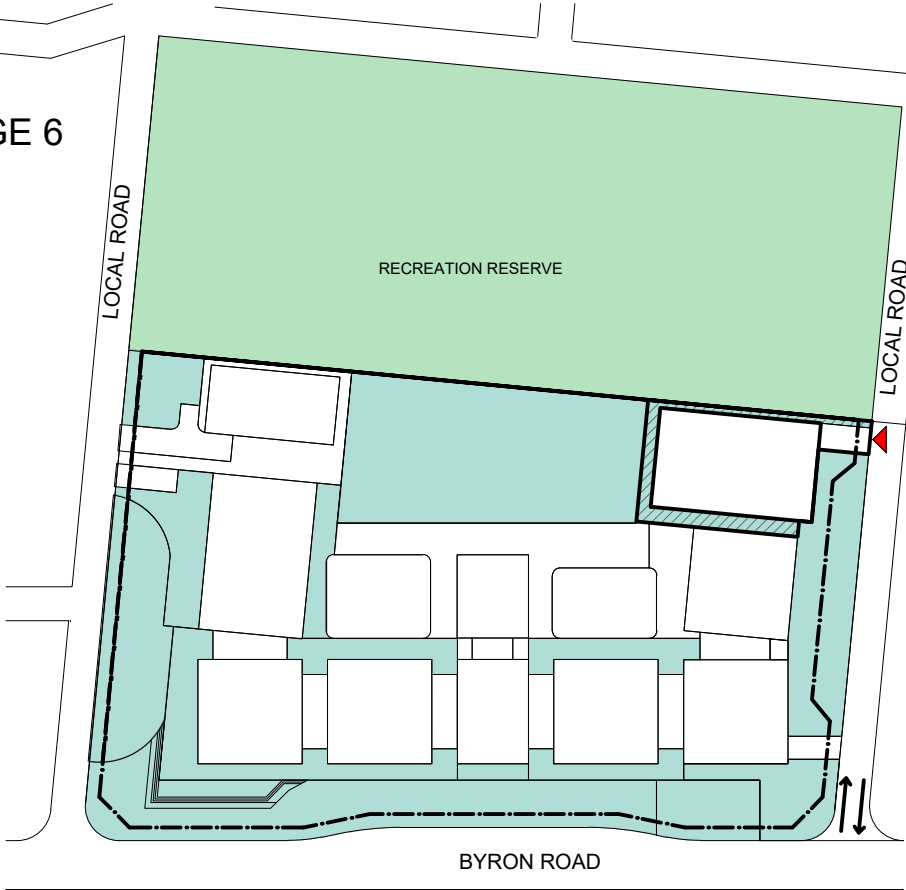
PREVIOUS STAGE

NOTE:

1. LANDSCAPING REFERS TO ROAD AND SOFT WORKS

2. SOIL, REMEDIATION, EXCAVATION AND FILL AS REQUIRED

STAGE 6



- Stage 1 - 5
Landscape works

Implementation of Landscape
Masterplan Stage 6
- FENCING

TRAFFIC IN

TRAFFIC OUT

TRAFFIC ENTRY / CROSSOVER
- STAGE 6**

 1. SECONDARY HALL AND LANDSCAPING
 2. LOADING ZONE

PREVIOUS STAGE

NOTE:

1. LANDSCAPING REFERS TO ROAD AND SOFT WORKS

2. SOIL, REMEDIATION, EXCAVATION AND FILL AS REQUIRED

<div><div><div></div><div></div></div><div>0 m20 m</div></div> <div><div></div><div>N</div></div>		N°	DESCRIPTION	DATE	<div><div><div></div></div><div>amity college</div></div>	SCALE	DRAWN BY	CHECKED BY	DATE	<div><div><div><div></div></div><div>Michael Siu</div><div>Landscape Architects</div><div>PO Box 550 Hurstville NSW 1481</div><div>michael@msla.com.au</div><div>02 9557 9833 0417 280 249</div></div></div>	PROJECT	
		A B	ISSUE FOR UPDATE	10 - 12 -20		1 : 2000@A3	JG	MS	MAY 2020		AMITY COLLEGE LEPPINGTON	
						PROJ. No	DRAWING No.	REV.			TITLE	
						LC5/6 - K23503		A			LANDSCAPE MASTER PLAN	