

TYPICAL CONSTRUCTION LEGEND

- - - FENCING
- - - → TRAFFIC IN
- - - ← TRAFFIC OUT
- ◀ TRAFFIC ENTRY / CROSSOVER

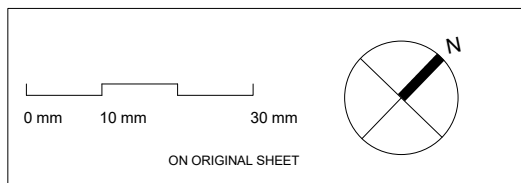
STAGE 3

1. PRIMARY COURTYARD
2. CANOPY STRUCTURES
3. TERRACED LEARNING AREA EXCAVATION AND LANDSCAPING
4. BUS BAY, MAIN STREET ENTRY AND LANDSCAPING
5. EXCLUSION ZONE FOR FUTURE PLAY FIELD AND LANDSCAPING.

■ PREVIOUS STAGE

NOTE:

1. LANDSCAPING REFERS TO RAD AND SOFT WORKS
2. SOIL, REMEDIATION, EXCAVATION AND FILL AS REQUIRED



N°.	DESCRIPTION	DATE
A	ISSUE FOR DEVELOPMENT APPLICATION	30.04.19
B	ISSUE FOR DEVELOPMENT APPLICATION	31.05.19
C	ISSUE FOR DEVELOPMENT APPLICATION	03.07.19



SCALE	DRAWN BY	CHECKED BY	DATE
1 : 1000 @A3	MC	PR	November 2018
PROJ. No.	DRAWING No.	REV.	
A1803	DA - 602	C	

GRAN
 GRAN ASSOCIATES AUSTRALIA ARCHITECTS PTY LTD
 LEVEL 1, 597 DARLING STREET
 ROZELLE NSW 2039
 PH: +61 2 9818 8437
 FAX: +61 2 9818 6288
 PETER REED ARAIA, AIA NOM ARCH 5377
 ANTHONY KEMENY FRAIA NSW REG No. 4599

PROJECT	AMITY COLLEGE LEPPINGTON
	85 Byron Road, Leppington NSW
TITLE:	STAGING PLAN STAGE 3