

## MEMO

DATE	16/10/2018	JOB	2639	PAGES	1 of 5
PROJECT	Saints Peter and Paul Assyrian Primary School				
TO	Rachel Streeter				
COMPANY	Willowtree Planning				
FROM	Tim				
REFERENCE	Iterative Design Process - illustrated version				

### 3.12. Iterative Design Process - *alternative design options*

The project has been developed over nearly two years and has considered many alternative design solutions, each responding to the original and then later, an amended brief.

This iterative design process enabled the project to respond to specialist consultants' input as it became available, feedback from government agencies, brief development and refinement with the client.

For example, an early scheme (February 2017) was designed as a feasibility study, sharing parking facilities with the neighbouring church and including an Early Learning Centre on the site in conjunction with the 3-stream Primary School (*refer Figure A*). The aim of including an Early Learning Centre was to respond to the growing needs of the local community by offering pre-school facilities with early learning opportunities.

The parking option was later rejected and the brief modified in order to ensure that the school project was self-reliant in every aspect whilst still remaining complementary with the facilities and offering of the parish church to the Christian community that both projects serve.

The Early Learning Centre was also rejected as the project progressed due to the limited area for building and parking on this site due to the bushfire and flood constraints and the overall two storey height limit.

After a number of early design options with all parking on site were explored, both underground and on-grade in various locations (*refer Figure B1 and B2*), a whole new design approach was envisaged by responding to the newly stipulated 40m Asset Protection Zone on the southern boundary. This became where the staff car parking area would fit, with a long driveway along the eastern boundary offering the required Kiss & Drop facilities for the ultimate school population (*refer Figure C*).



The design then developed a more compact and distinctly modular form responding to the staged construction requirements of the brief, enabling flexibility for the future staging (*refer **Figure D***). This was based on the client's future needs whilst also offering a speedier construction time than standard two-storey construction, with important cost and construction-time benefits.

Adaptability and flexibility-of-use regarding the various learning and public spaces was incorporated into the detailed planning of the project prior to consultation with the Government Architect NSW.

Feedback from the Government Architect NSW's 'State Design Review Panel' then helped guide the project through its final iterations to a highly adaptable and flexible scheme, integrated into the hill-side and surrounded by a 'green oasis' through high-quality, landscape design and features.

Long-term sustainability, contextual respect and response to local environmental conditions has also been a key design issue throughout the design process, as the proposed primary school will be a central part of the future local community as this area of western Sydney inevitably continues to grow and develop.

The collaborative design process where Architect, Landscape Architect, Planner and the whole design team all influenced the project along the path to its final design solution, is believed to be qualitatively and quantitatively fit-for-purpose for active and passive learning well into the 21st century.

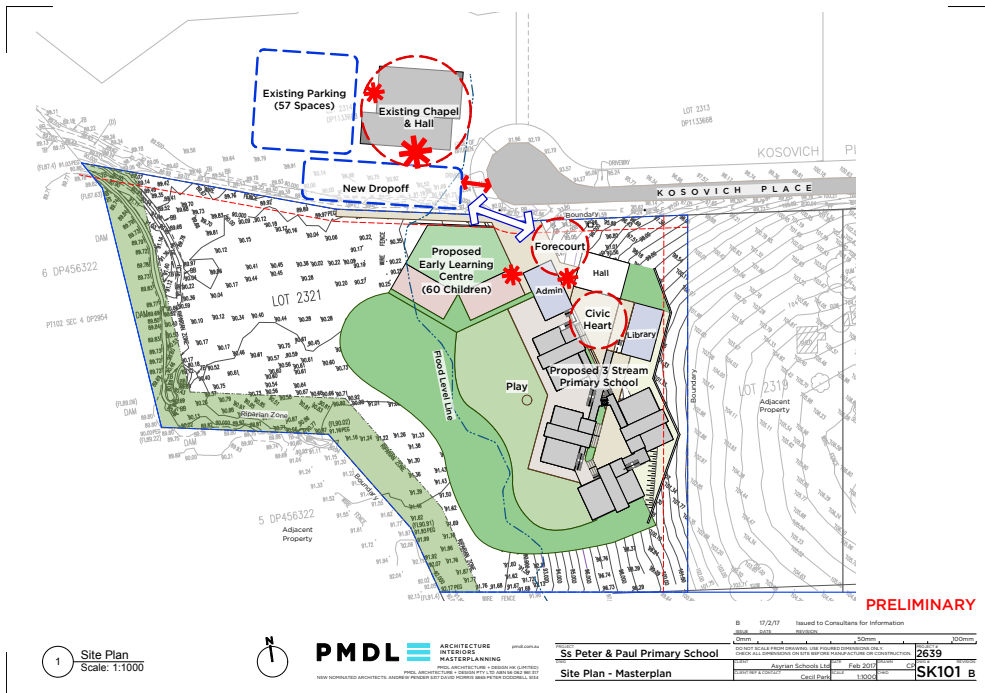


FIGURE A: 2639 - SK101B - Site Plan - 23/2/2017

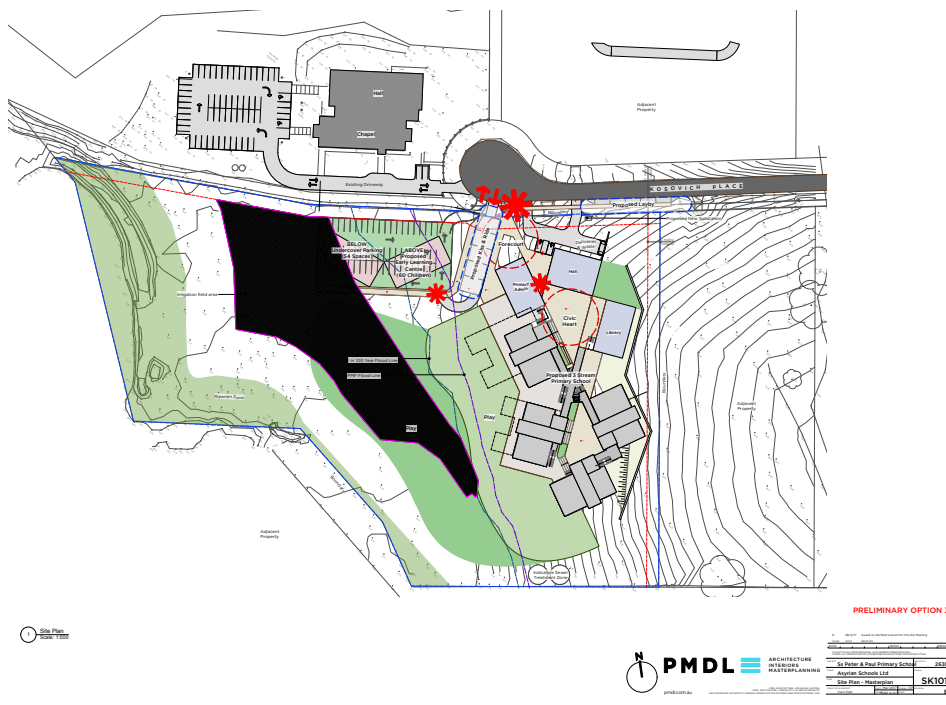
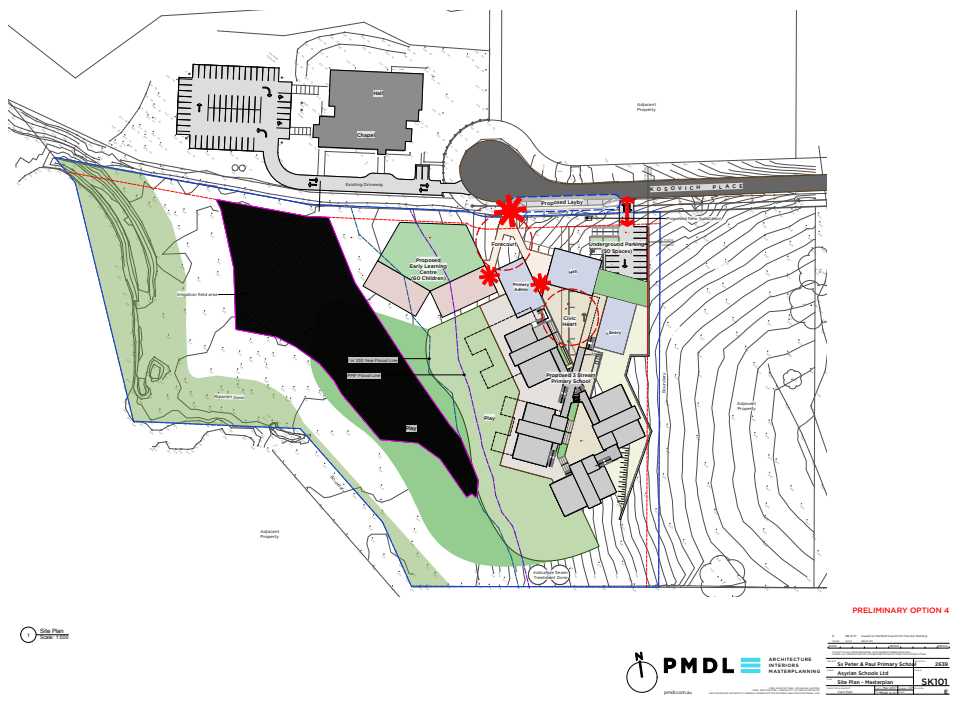
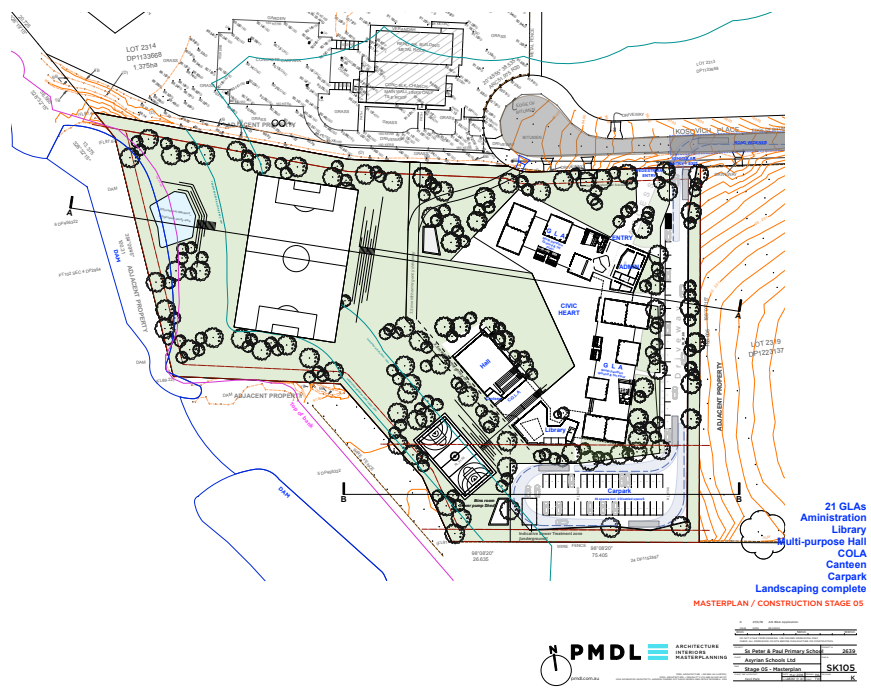


FIGURE B1: 2639 - SK101 Masterplan Option 3 - 22/01/2018  
Carpark on-grade under Early Learning Centre

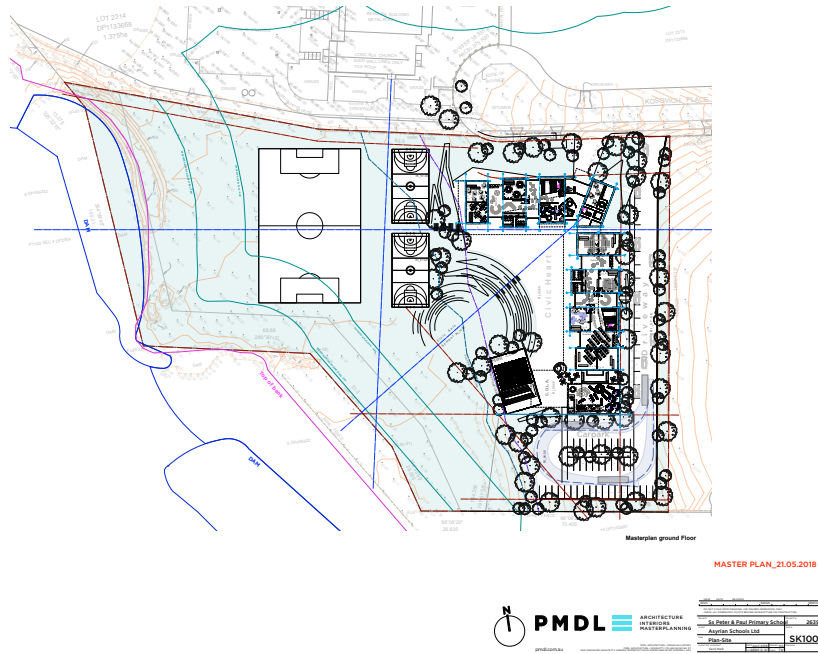


**FIGURE B2:** 2639 - SK101 - Masterplan Option 4 - 22/01/2018  
Carpark underground below the school



**FIGURE C:** 2639 - SK105-K Masterplan - 27/4/2018  
Revised approach with staff parking within 40m APZ off southern boundary





**FIGURE D:** 2639 - SK100 Masterplan - 21/5/2018  
Prior to first presentation to GA NSW SDRP on 13 June 2018