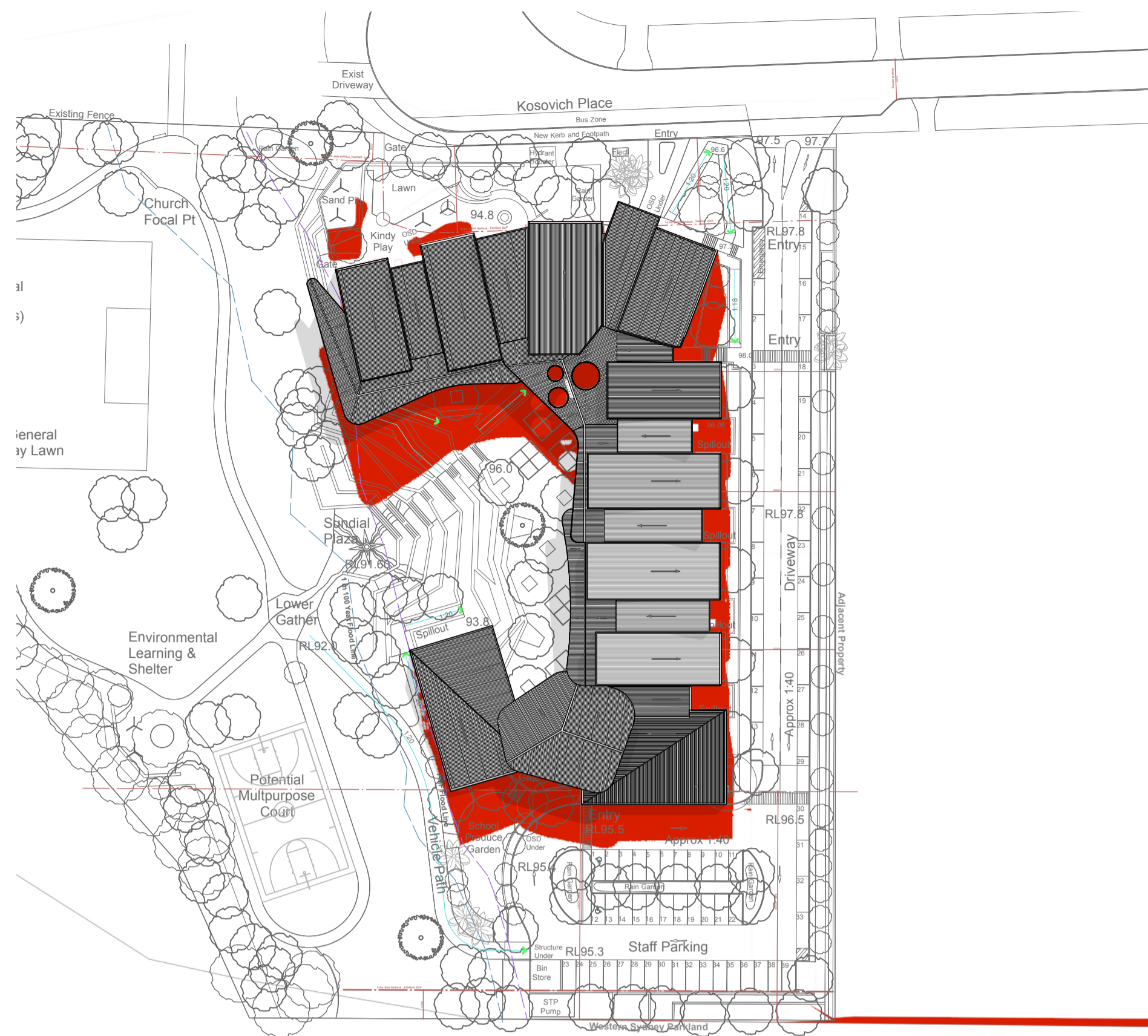
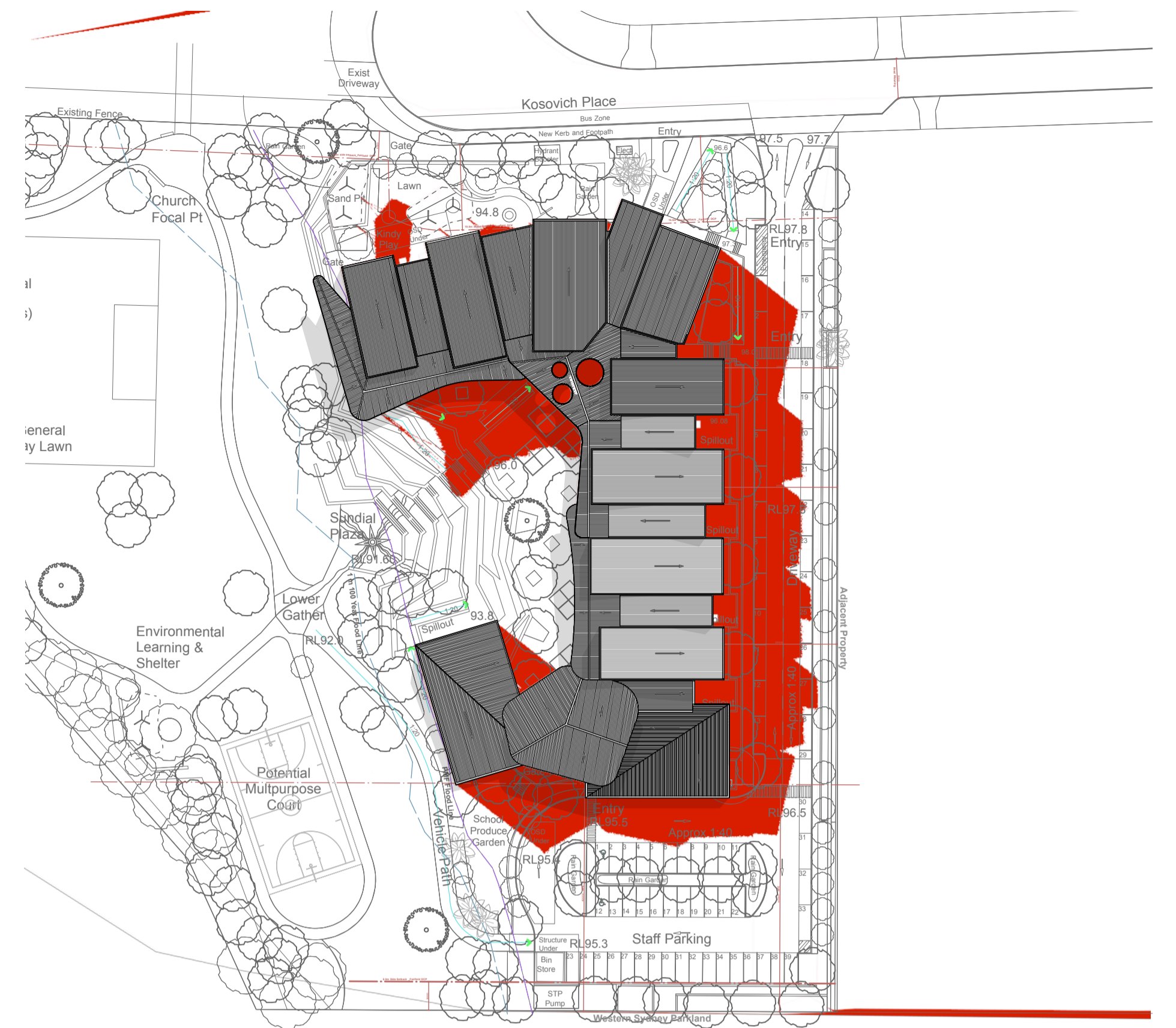


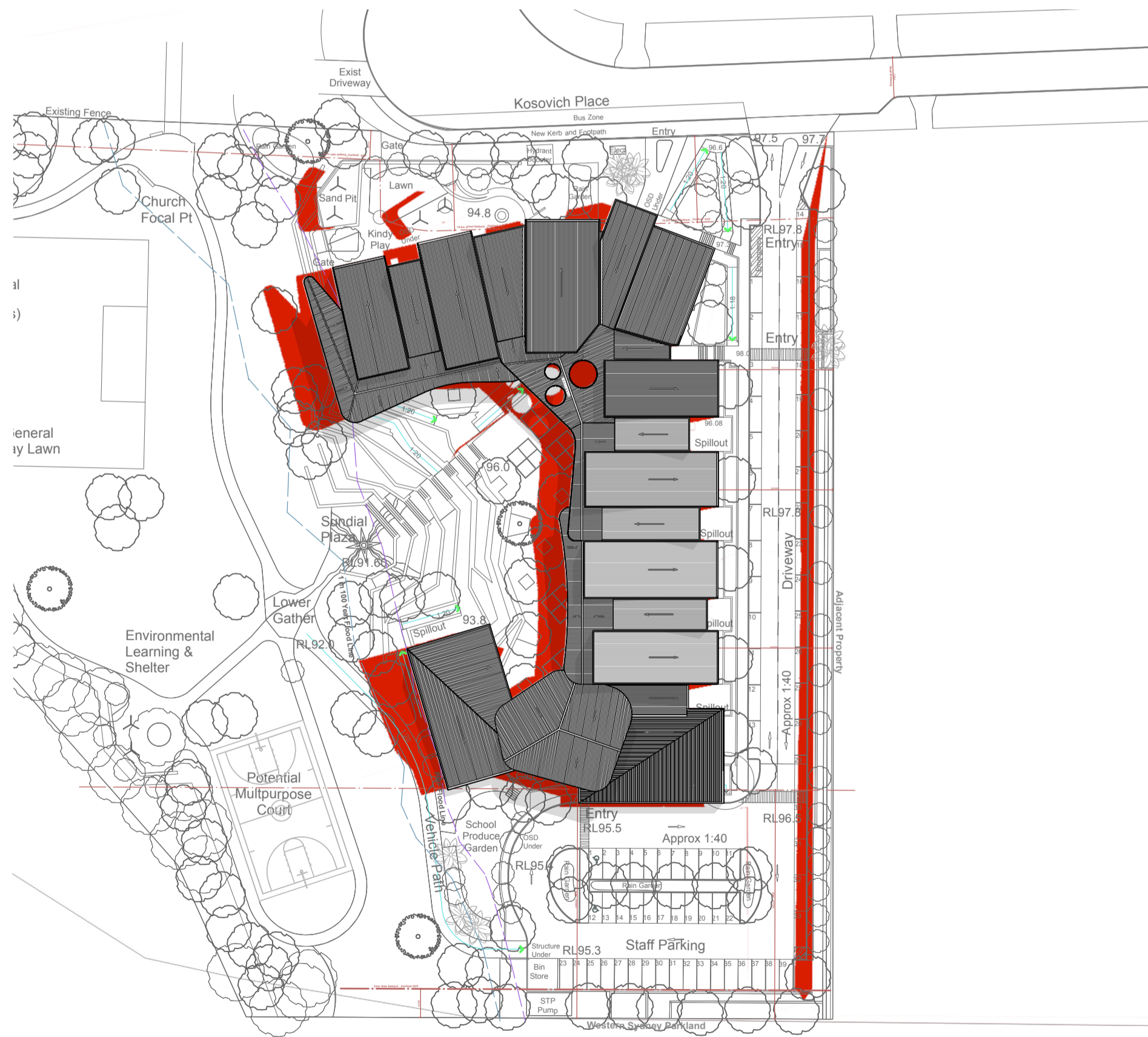
9am June 21



12pm June 21



3pm June 21



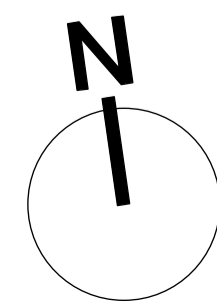
9am Dec 22



12pm Dec 22

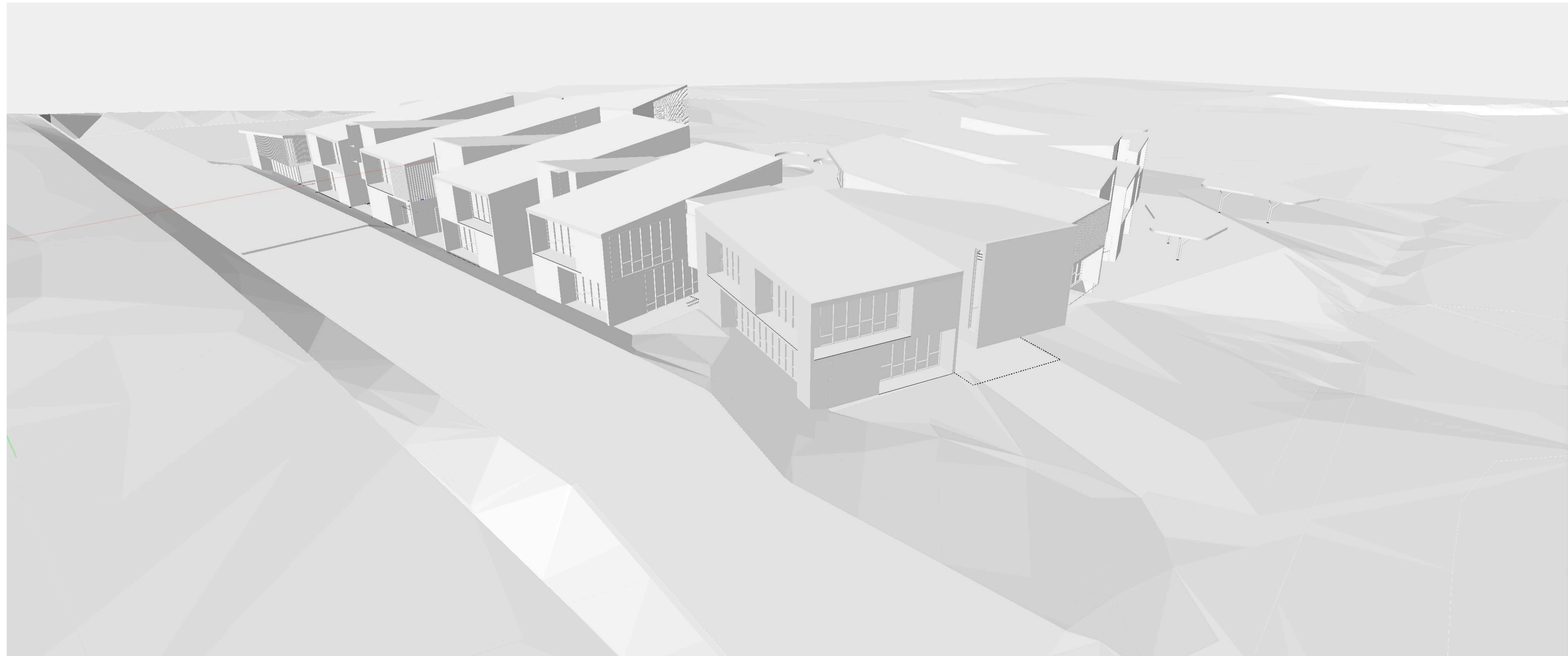


3pm Dec 22

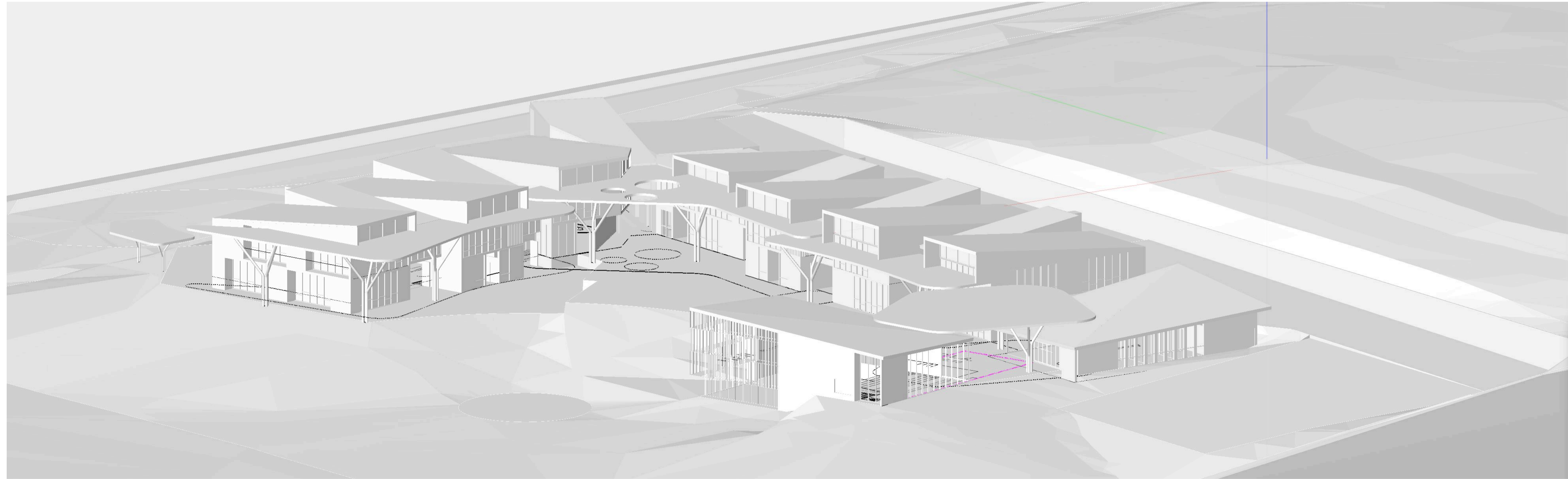




ISOMETRIC - VIEW FROM SOUTH EAST



ISOMETRIC - VIEW FROM NORTH EAST



ISOMETRIC - VIEW FROM SOUTH WEST

| ISSUE | DATE | REVISION | PROJECT # |
|-------|------|----------|-----------|
| A | - | DA Issue | 2639 |

| | | | |
|----------------------|--------------------------------|-----------|--------------|
| PROJECT | Ss Peter & Paul Primary School | PROJECT # | 2639 |
| CLIENT | Asyrian Schools Ltd | DWG # | DA612 |
| DWG | 3D Massing Model - Views | DATE | July 2018 |
| CLIENT REF & CONTACT | Cecil Park | SCALE | NTS, CHD, TW |
| REVISION | | | A |



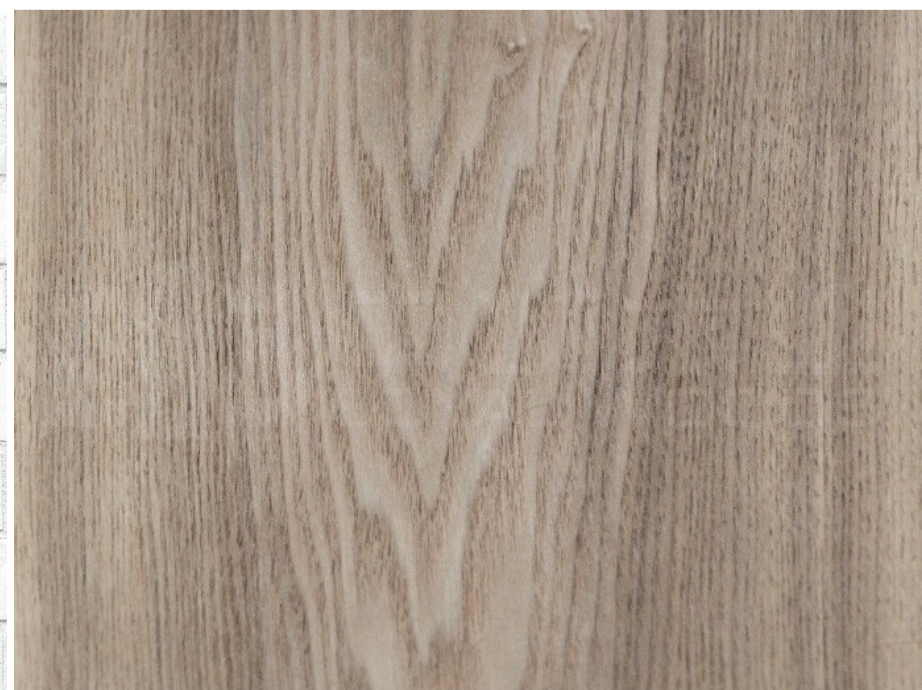
01



02



03



04

Material Palette

01 Render Finish

GLA blocks, exterior and interior facade [Civic Heart]

02 Dark Door & Window Frames

Windows doors and internal glazed partitions.

03 Light Brickwork

Practical blocks, between GLA blocks.

04 Timber Finish

Administration, GLAs and Practical areas on the ground floor.

PMDL ARCHITECTURE
 INTERIORS
 MASTERPLANNING

pmdl.com.au

PMDL ARCHITECTURE + DESIGN (LIMITED)
 PMDL ARCHITECTURE + DESIGN PTY LTD ABN 56 042 981 571
 NSW NOMINATED ARCHITECTS: ANDREW PENDER 5377 DAVID MORRIS 5865 PETER DOOGRELL 5354

| ISSUE | DATE | REVISION | PROJECT # | DWG # |
|-------|------|----------|--------------------------------|-------|
| A | | DA Issue | Ss Peter & Paul Primary School | 2639 |
| | | | Asyrian Schools Ltd | |
| | | | Material Palette | DA615 |
| | | | Cecil Park | A |

DO NOT SCALE FROM DRAWING. USE FIGURED DIMENSIONS ONLY.
 CHECK ALL DIMENSIONS ON SITE BEFORE MANUFACTURE OR CONSTRUCTION.

CLIENT REF & CONTACT: Cecil Park
 DATE: July 2018
 SCALE: NTS
 DRAWN BY: MAM
 CHECKED BY: TW