



DEVELOPMENT APPLICATION

WEE HUR STUDENT HOUSING

13-23 Gibbons Street, Redfern

SHEET LIST

- DA0001 Title Sheet
- DA0002 Perspective 1
- DA0003 Perspective 2
- DA0004 Perspective 3
- DA0005 Project Summary
- DA1001 Site Plan
- DA1002 Site Analysis
- DA1003 Street Elevations
- DA1004 Demolition Plan
- DA1005 Setback Site Plan
- DA1006 Setback Plan
- DA2001 Basement & Level 1 Plan
- DA2002 Level 2 & 3 Plan
- DA2003 Level 4 Plan
- DA2004 Typical Tower & Level 18 Plan
- DA2005 Plant & Roof Plan
- DA3001 Elevation North & East
- DA3002 Elevation South & West
- DA3003 Material Board
- DA3104 Sections
- DA4001 Notification Plan
- DA4002 Notification Elevation
- DA5001 Shadow Diagrams Existing
- DA5002 Shadow Diagrams Proposed
- DA5003 Shadow Diagrams Proposed and Future Development
- DA5103 GFA Diagrams
- DA5104 Standard Unit Plans
- DA5106 Signage Detail

	Revisions		Client	Key	Architect	Project	Drawing Title	Scale	Drawing No.	Issue
	No.	Date								
	01	10.01.2019								
Description		Ver	App'd							
DA Issue		SO	BM							
				</						



	<div>Revisions</div> <table><tr><th>No.</th><th>Date</th><th>Description</th></tr><tr><td>01</td><td>10.01.2019</td><td>DA Issue</td></tr></table> <div>Ver SO</div> <div>App'd BM</div>	No.	Date	Description	01	10.01.2019	DA Issue	<div>Key</div>	<div>Client</div> <div>The Trust Company Australia (Limited) ATF WH Gibbons Trust</div>	<div>Architect</div> <div><div>AJ+C</div><div>ALLEN JACK+COTTIER</div><div>79 Myrtle Street Chippendale NSW 2008 AUSTRALIA ph +61 2 9311 8222 fx +61 2 9311 8200 ABN 53 003 782 250</div></div>	<div>Project</div> <div>WEE HUR STUDENT HOUSING 13-23 Gibbons Street, Redfern</div> <div>Proj. No. 18029</div>	<div>Drawing Title</div> <div>Perspective 1</div> <div>Sheet Status</div> <div>NOT FOR CONSTRUCTION</div>	<div>Scale</div>	<div>Drawing No.</div> <div>DA0002 01</div> <div>Issue</div>
	No.	Date	Description											
01	10.01.2019	DA Issue												

LOT DATE & TIME

10/01/2019 11:03:37 AM



Revisions No. Date Description 01 10.01.2019 DA Issue	Ver SO	App'd BM	Key	Client The Trust Company Australia (Limited) ATF WH Gibbons Trust	Architect <div>AJ+C ALLEN JACK+COTTIER</div> 79 Myrtle Street Chippendale NSW 2008 AUSTRALIA ph +61 2 9311 8222 fx +61 2 9311 8200 ABN 53 003 782 250	Project WEE HUR STUDENT HOUSING 13-23 Gibbons Street, Redfern Proj. No. 18029	Drawing Title Perspective 2	Scale	Drawing No. DA0003 01	Issue
							Sheet Status NOT FOR CONSTRUCTION			



Revisions No. Date 01 10.01.2019	Description DA Issue	Ver SO	App'd BM	Key	Client The Trust Company Australia (Limited) ATF WH Gibbons Trust	Architect <div>AJ+C ALLEN JACK+COTTIER</div> <div>79 Myrtle Street Chippendale NSW 2008 AUSTRALIA ph +61 2 9311 8222 fx +61 2 9311 8200 ABN 53 003 782 250</div>	Project WEE HUR STUDENT HOUSING 13-23 Gibbons Street, Redfern Proj. No. 18029	Drawing Title Perspective 3	Scale	Drawing No. DA0004 01	Issue
								Sheet Status NOT FOR CONSTRUCTION			

Wee Hur Redfern Accommodation Schedule

Apartment type	Studio Standard	Studio DDA	Single Ensuite Dorm DDA	Single Ensuite Dorm		Total Beds	Common Area (m2)	GFA (m2)
Apartment area (NSA)	15.0	20.0	17.0	13.0				
Beds / Apartment	1	1	1	1				
Basement 1							171.3	264
1 (Ground)						0	373	608
2			2	32		34	86	783
3			2	32		34	86	783
4	15	1	0	0		16	192	576
5	28	1				29		604
6	28	1		0		29		604
7	28	1		0		29		604
8	28	1		0		29		604
9	28	1		0		29		604
10	28	1		0		29		604
11	28	1		0		29		604
12	28	1		0		29		604
13	28	1		0		29		604
14	28	1		0		29		604
15	28	1		0		29		604
16	28	1		0		29		604
17	28	1		0		29		604
18	26	1		0		27	40	604
Roof								
Total no. apartments	405	15	4	64			948.3	11,470
% apartments	83.0%	3.1%	0.8%	13.1%				11,030
Total no. beds	405	15	4	64		488	1.94	-440
% beds	83.0%	3.1%	0.8%	13.1%		100%	Per bed	23.5

Site Area	1365 m ²	Allowable FSR	Difference
Total FSR	8.40 :1	7 :1	20.0%
No. adaptable required	18.8		
No. adaptable provided	19		
Common living area	1.25 /bed	610.0 m ²	required
Common kitchen area	1.2 /bed w/o kitchen	81.6 m ²	required
Common areas required		691.6 m ²	required
Ratio per bed		1.4	required

	Revisions		Description	Ver	App'd	Key	Client	Architect	Project	Drawing Title	Scale	Drawing No.	Issue
	No.	Date											
	01	10.01.2019	DA Issue		SO	BM	The Trust Company Australia (Limited) ATF WH Gibbons Trust	<div><div>AJ+C</div><div>ALLEN JACK+COTTIER</div></div> <div>79 Myrtle Street Chippendale NSW 2008 AUSTRALIA ph +61 2 9311 8222 fx +61 2 9311 8200 ABN 53 003 782 250</div>	WEE HUR STUDENT HOUSING 13-23 Gibbons Street, Redfern	Project Summary		DA0005	01
									Proj. No. 18029	Sheet Status NOT FOR CONSTRUCTION			



- SITE BOUNDARY

THROUGH SITE LINK
- RESIDENTIAL

■

RETAIL
- SIGNIFICANT BUILDING

■

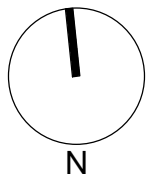
STUDENT HOUSING
- PARK

●

BUS STOP
- 400M RADIUS

PEDESTRIAN PATH
- BIKE PATH

CLEARWAY



Client
The Trust Company Australia (Limited)
ATF WH Gibbons Trust

Architect
AJ+C
ALLEN JACK+COTTIER
79 Myrtle Street Chippendale NSW 2008 AUSTRALIA
ph +61 2 9311 8222 fx +61 2 9311 8200
ABN 53 003 782 250

Project
WEE HUR STUDENT HOUSING
13-23 Gibbons Street, Redfern

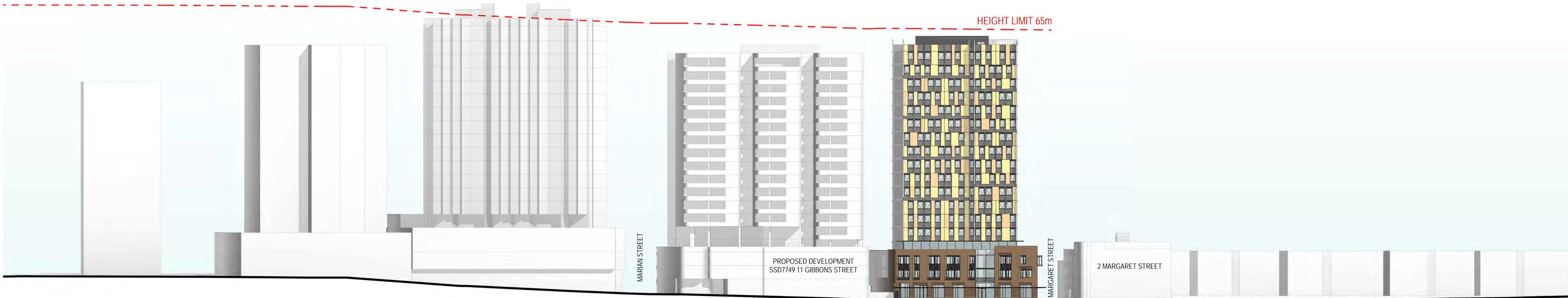
Proj. No. 18029

Drawing Title
Site Plan

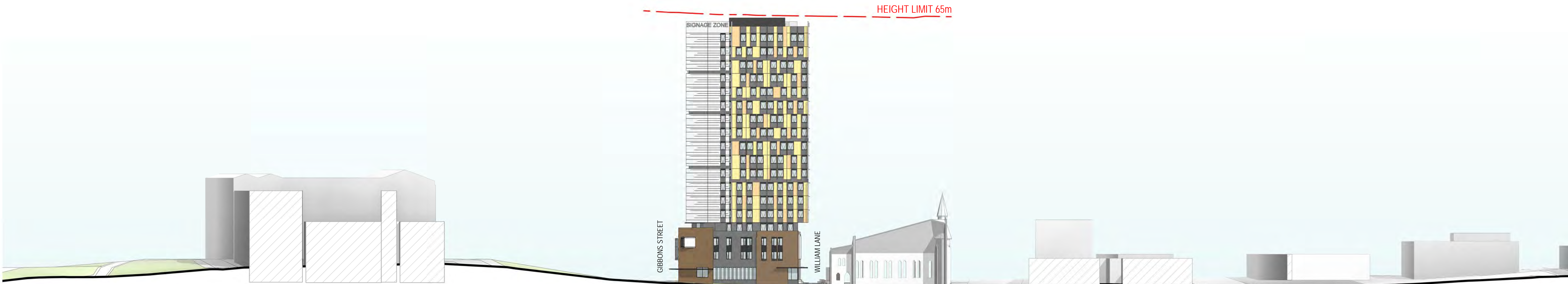
Sheet Status
NOT FOR CONSTRUCTION

Scale
As indicated
@A1
Drawing No.
DA1001
Issue
01

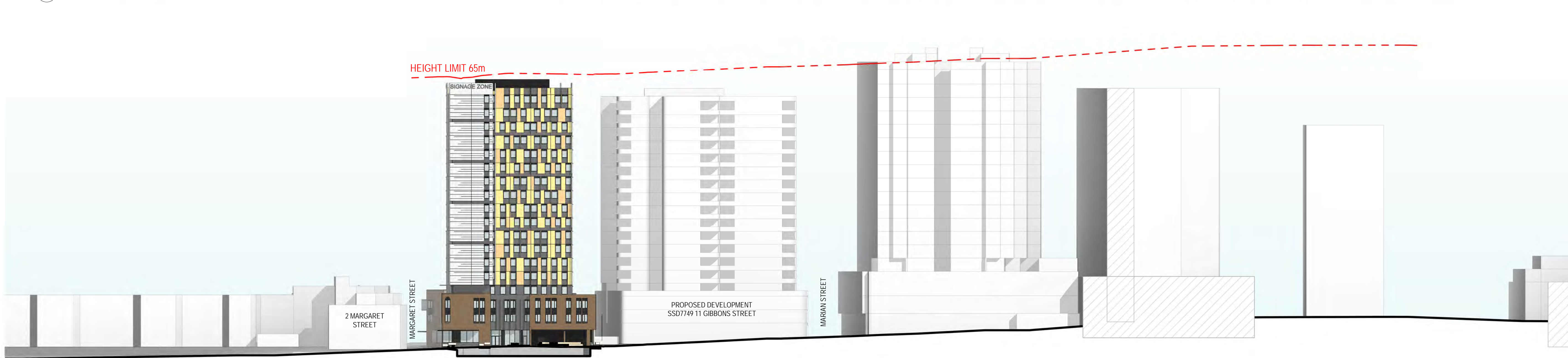




1 Street Elevation_Gibbons Street
1 : 500



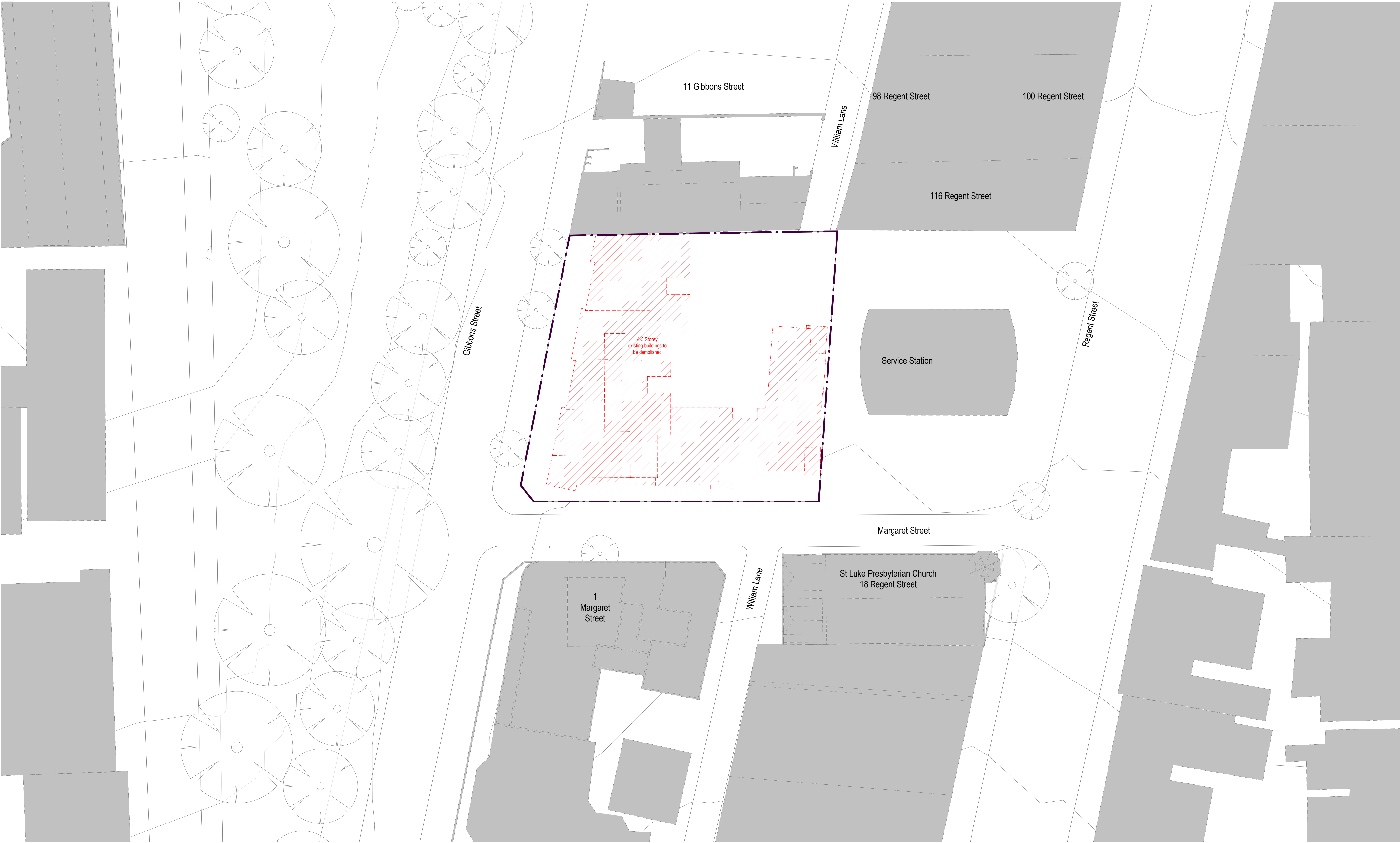
2 Street Elevation_Margaret Street
1 : 500



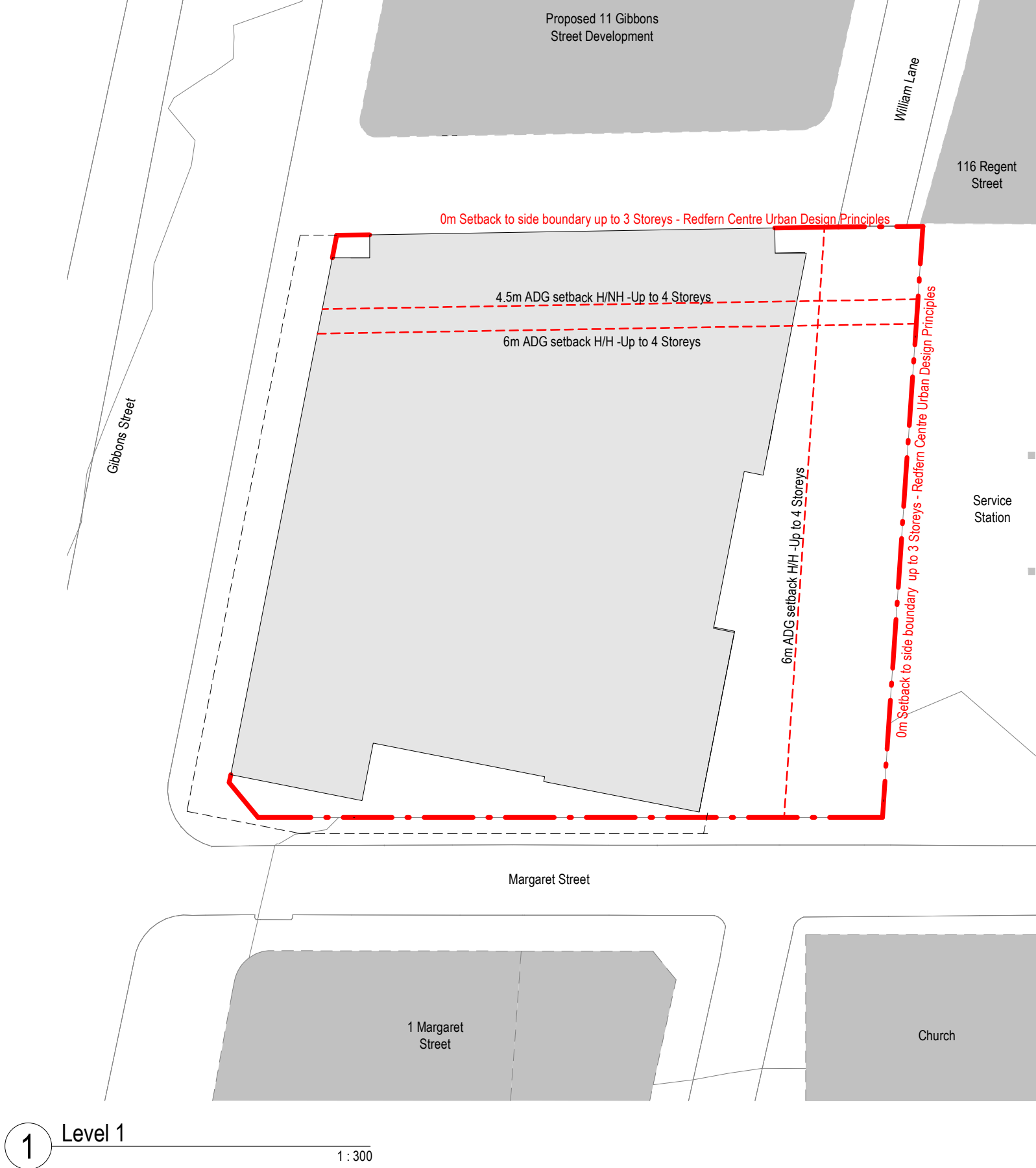
3 Street Elevation_William Lane
1 : 500

	<div>Revisions</div> <table><tr><th>No.</th><th>Date</th><th>Description</th></tr><tr><td>01</td><td>10.01.2019</td><td>DA Issue</td></tr></table>	No.	Date	Description	01	10.01.2019	DA Issue	<div>Client</div> <div>The Trust Company Australia (Limited) ATF WH Gibbons Trust</div>	<div>Architect</div> <div><div>AJ+C</div><div>ALLEN JACK+COTTIER</div><div>79 Myrtle Street Chippendale NSW 2008 AUSTRALIA ph +61 2 9311 8222 fx +61 2 9311 8200 ABN 53 003 782 250</div></div>	<div>Project</div> <div>WEE HUR STUDENT HOUSING 13-23 Gibbons Street, Redfern</div> <div>Proj. No. 18029</div>	<div>Drawing Title</div> <div>Street Elevations</div> <div><div>Sheet Status</div><div>NOT FOR CONSTRUCTION</div></div>	<div>Scale</div> <div>1 : 500 @A1</div> <div><div>Drawing No.</div><div>DA1003 01</div></div> <div><div>0</div><div>5</div><div>10</div><div>20</div><div>40 m</div></div>
	No.	Date	Description									
	01	10.01.2019	DA Issue									

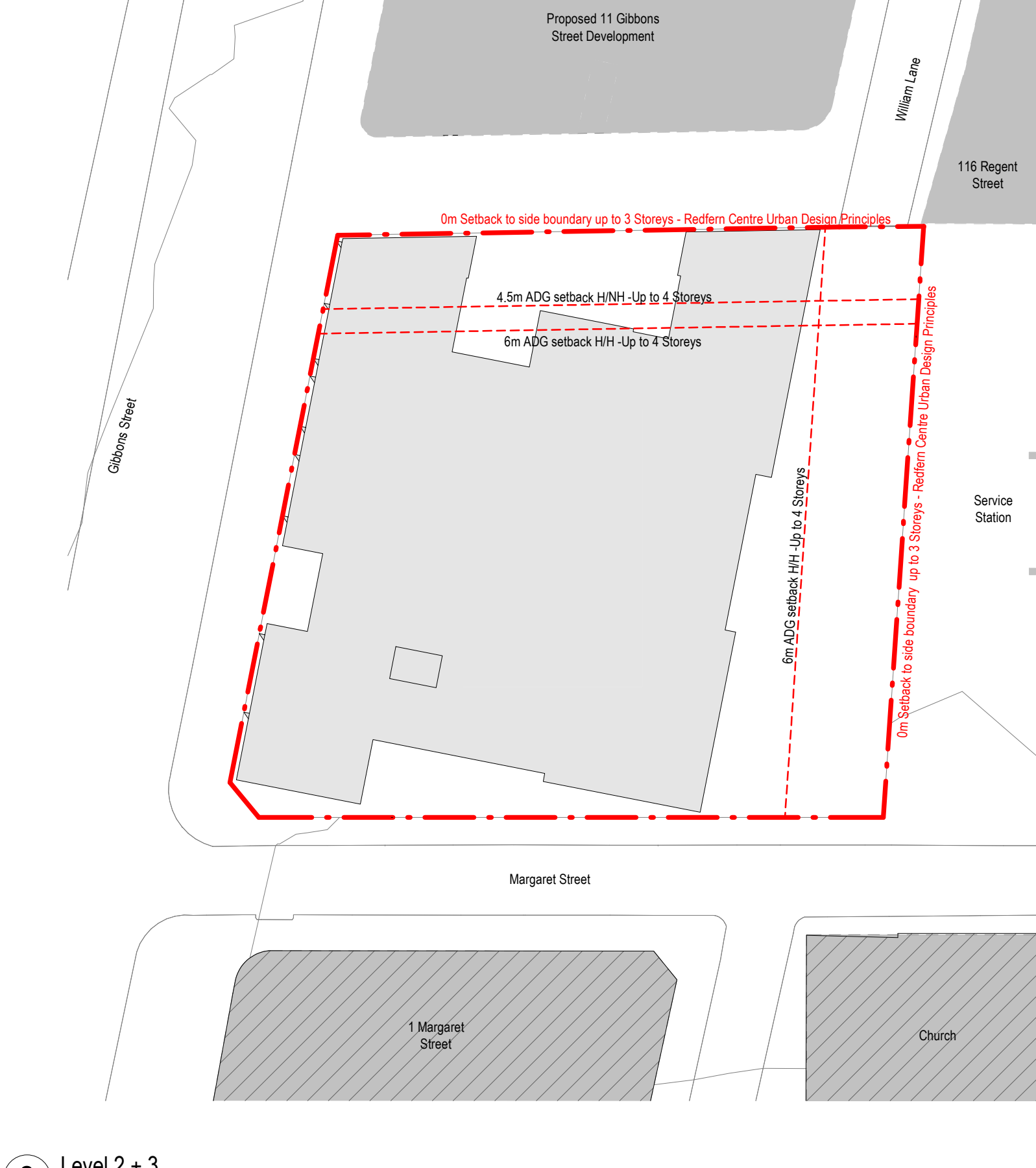
Do not scale drawings. Use figured dimensions only. Check & verify levels and dimensions on site prior to the commencement of any work, the preparation of shop drawings or the fabrication of components. This drawing is the copyright of Allen Jack + Cottier Architects and is protected under the Copyright Act 1968. Do not alter, reproduce or transmit in any form, or by any means without the express permission of Allen Jack + Cottier Architects. Nominated Architects: Michael Heenan 5264, Peter Ireland 6661



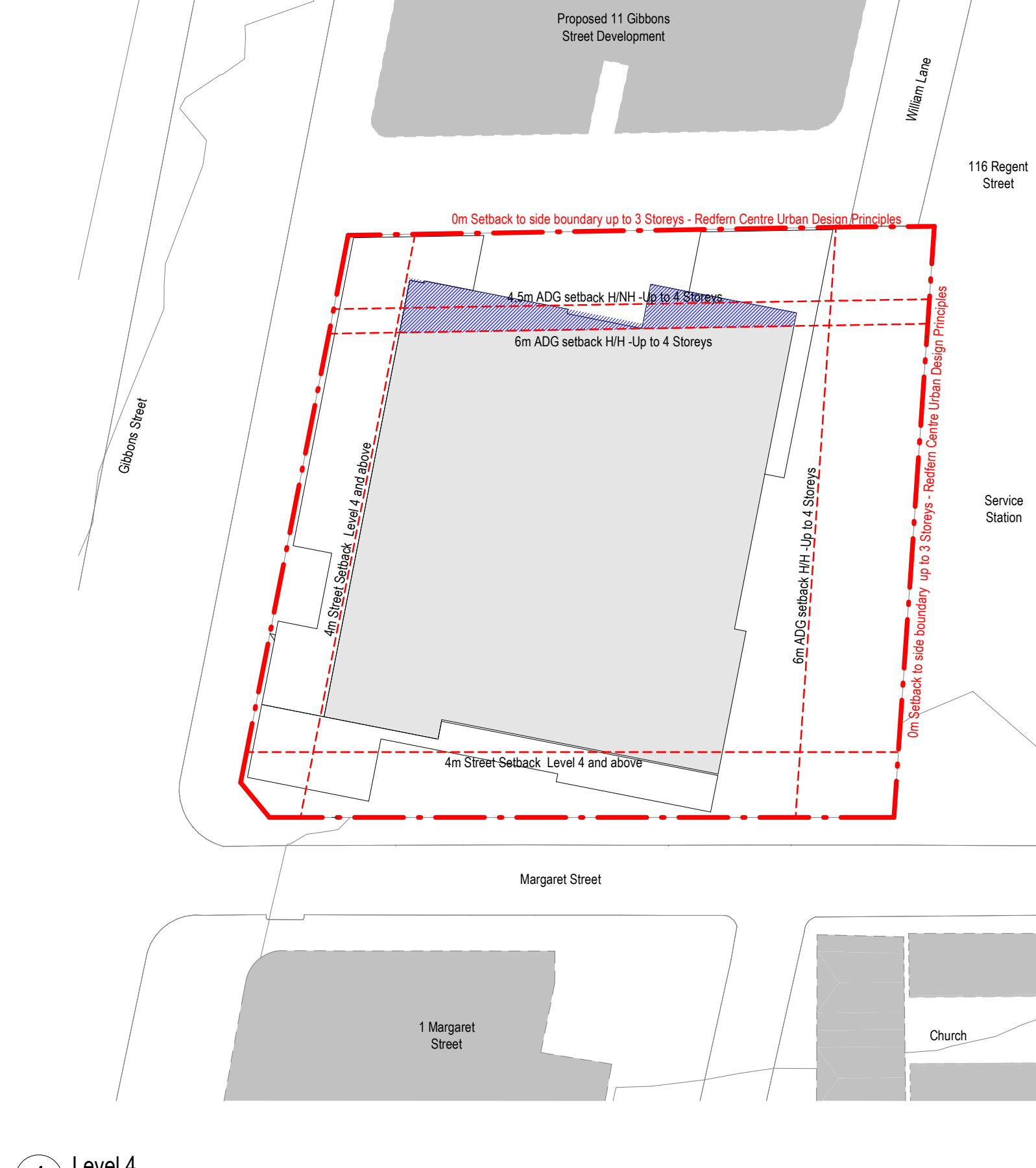
	Revisions		Client	Architect	Project	Drawing Title	Scale	Drawing No.	Issue
	No.	Date							
	01	10.01.2019	DA Issue	The Trust Company Australia (Limited) ATF WH Gibbons Trust	<div>AJ+C</div> <div>ALLEN JACK+COTTIER</div> <div>79 Myrtle Street Chippendale NSW 2008 AUSTRALIA ph +61 2 9311 8222 fx +61 2 9311 8200 ABN 53 003 782 250</div>	WEE HUR STUDENT HOUSING 13-23 Gibbons Street, Redfern	Demolition Plan	1 : 250 @A1	DA1004 01
			<div><div></div><div>N</div></div>						
					Proj. No. 18029	Sheet Status NOT FOR CONSTRUCTION	<div><div>02.551020</div><div>m</div></div>		



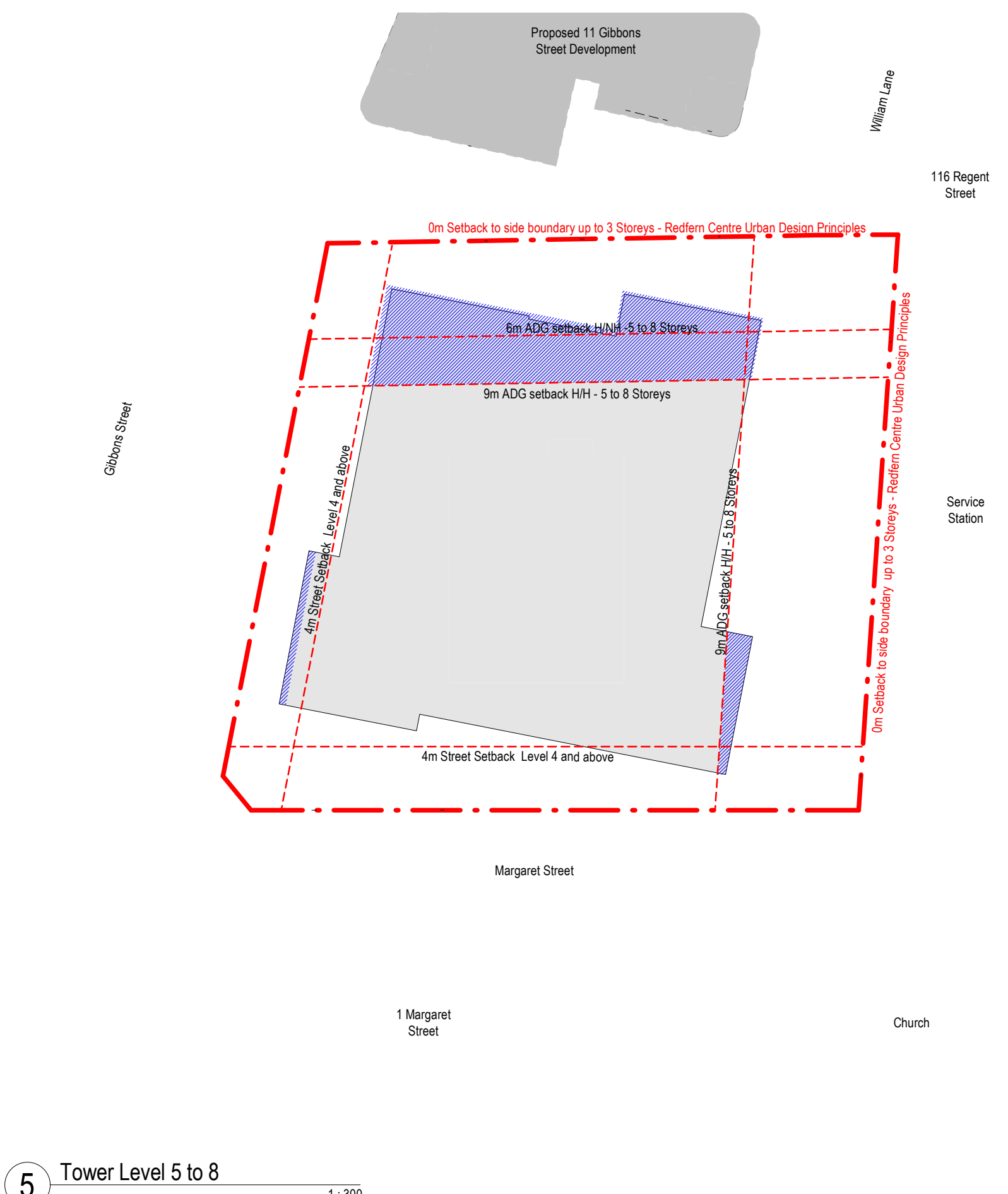
1 Level 1 1 : 300



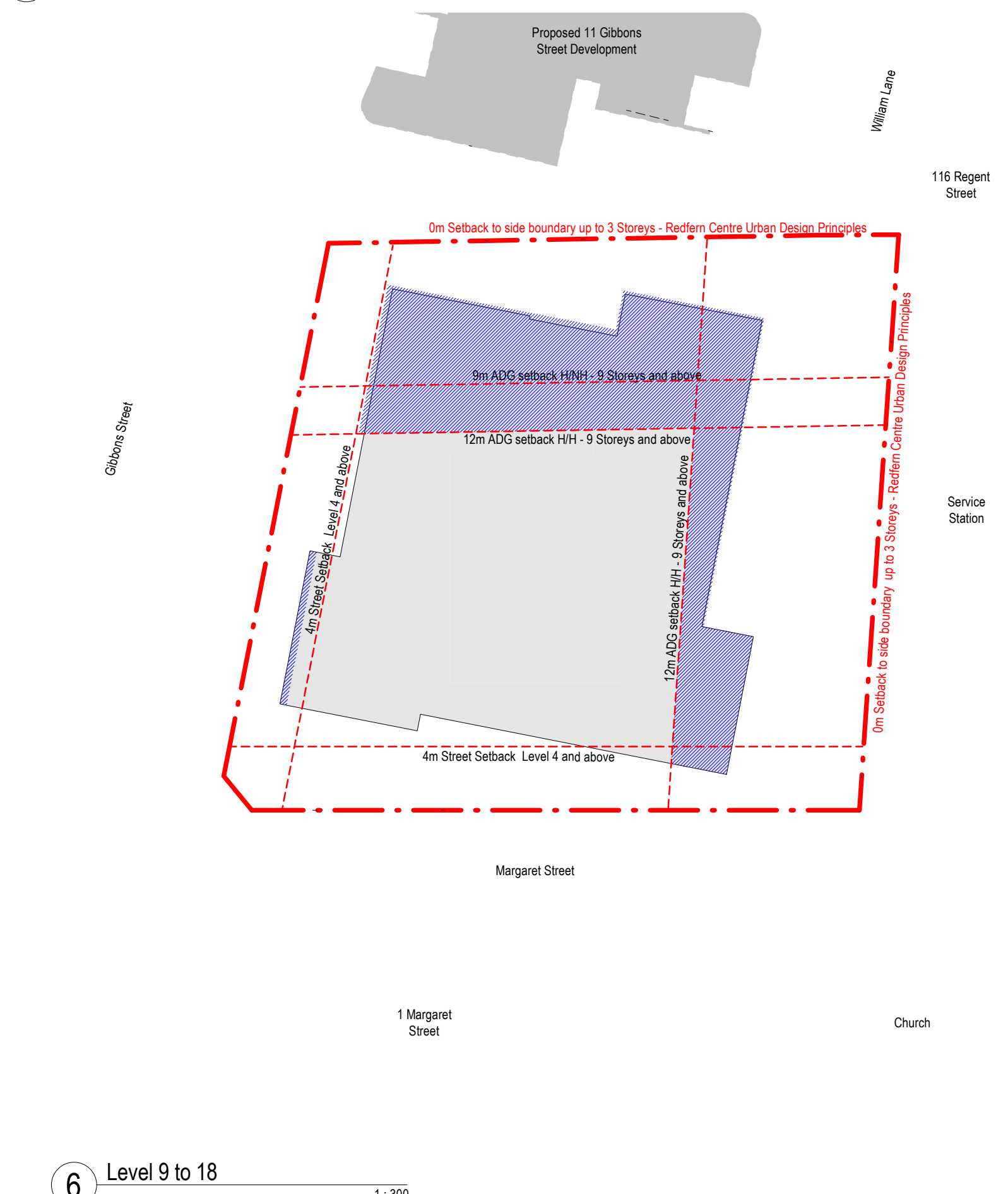
2 Level 2 + 3 1 : 300



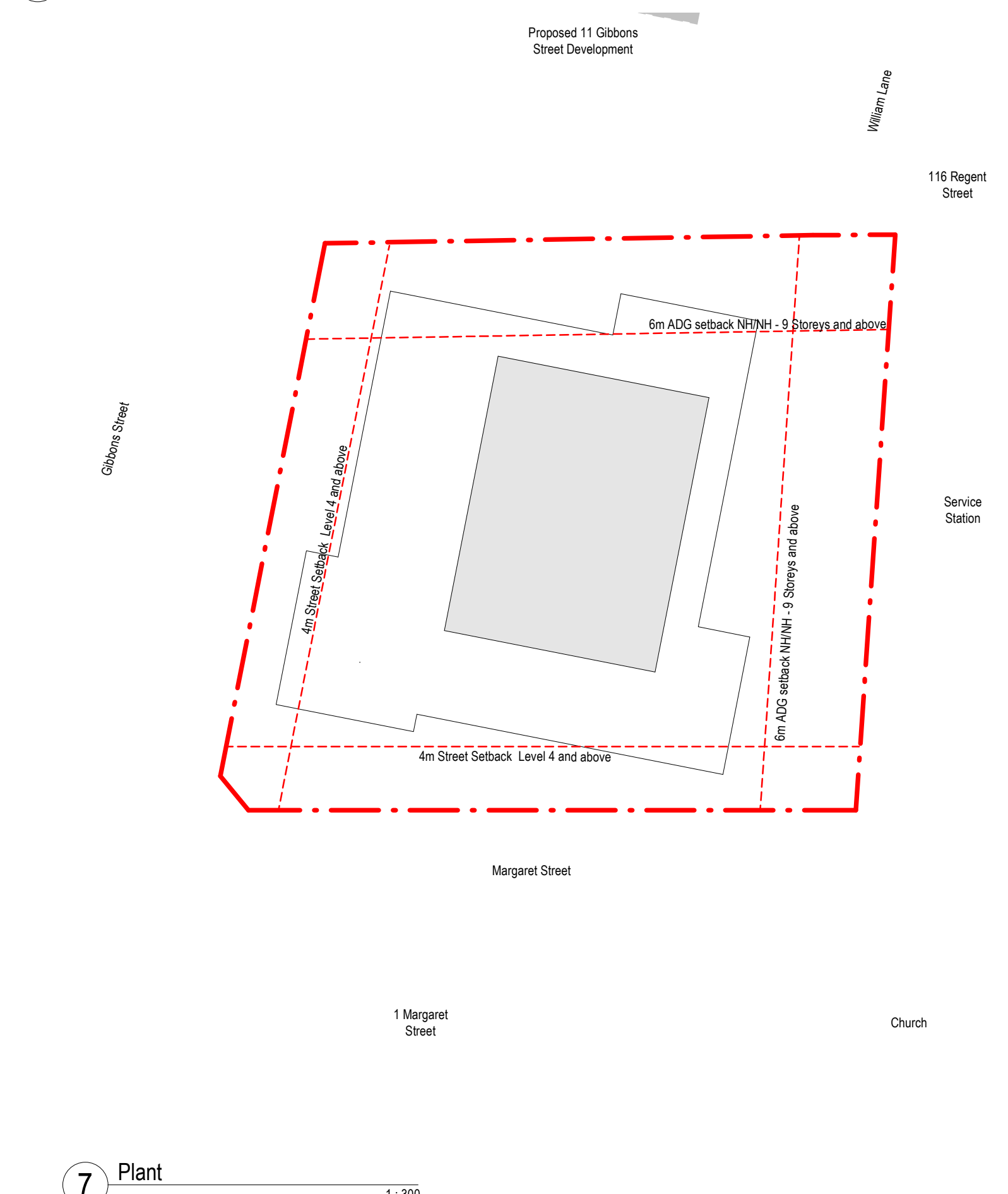
4 Level 4 1 : 300



5 Tower Level 5 to 8 1 : 300



6 Level 9 to 18 1 : 300



7 Plant 1 : 300

<div>Revisions</div> <table><tr><th>No.</th><th>Date</th><th>Description</th></tr><tr><td>01</td><td>10.01.2019</td><td>DA Issue</td></tr></table>	No.	Date	Description	01	10.01.2019	DA Issue	<div>Client</div> <div>The Trust Company Australia (Limited) ATF WH Gibbons Trust</div>	<div>Architect</div> <div>AJ+C ALLEN JACK+COTTIER</div> <div>79 Myrtle Street Chippendale NSW 2008 AUSTRALIA ph +61 2 9311 8222 fx +61 2 9311 8200 ABN 53 003 782 250</div>	<div>Project</div> <div>WEE HUR STUDENT HOUSING 13-23 Gibbons Street, Redfern</div> <div>Proj. No. 18029</div>	<div>Drawing Title</div> <div>Setback Plan</div>	<div>Scale</div> <div>1 : 300 @A1</div>	<div>Drawing No.</div> <div>DA1006 01</div>	<div>Issue</div>
	No.	Date	Description										
01	10.01.2019	DA Issue											
<div>Ver SO</div> <div>App'd BM</div>	<div>Key</div> <div><div><div><div></div><div>N</div></div><div><div></div><div>HABITABLE SPACE</div></div><div><div></div><div>NON HABITABLE SPACE</div></div></div></div>	<div>Sheet Status</div> <div>NOT FOR CONSTRUCTION</div>	<div>0361224 m</div>										