

1

SITE PLAN

1:
1000

NOT FOR CONSTRUCTION

0 5 10 20 40 m

Project
WEE HUR STUDENT HOUSING
13-23 Gibbons Street, Redfern

Client
The Trust Company Australia (Limited) ATF
WH Gibbons Trust

Drawing No.
DA4001

Architect

AJ+C
ALLEN JACK + COTTIER

79 Myrtle Street Chippendale NSW 2008 AUSTRALIA
ph +61 2 9311 8222 fx +61 2 9311 8200
ABN 53 003 782 250

Drawing Title

Notification Plan

Scale
1 : 1000
@A4

Issue
01

Project No.
18029





1 North Elevation

1:
1000



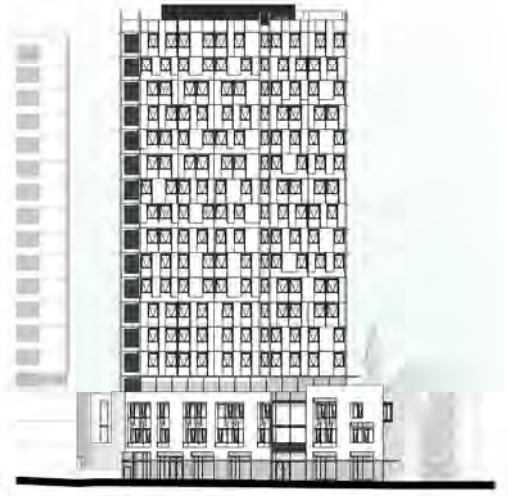
2 East Elevation

1:
1000



3 South Elevation

1:
1000



4 West Elevation

1:
1000

NOT FOR CONSTRUCTION

0 5 10 20 40 m

Project
WEE HUR STUDENT HOUSING
13-23 Gibbons Street, Redfern

Client
The Trust Company Australia (Limited) ATF
WH Gibbons Trust

Drawing No.
DA4002

Architect

AJ+C
ALLEN JACK + COTTIER

79 Myrtle Street Chippendale NSW 2008 AUSTRALIA
ph +61 2 9311 8222 fx +61 2 9311 8200
ABN 53 003 782 250

Drawing Title

Notification Elevation

Scale
1 : 1000
@ A4

Issue
01

Project No.
18029



1 Existing mid-winter 9 00 AM
1:1500



2 Existing mid-winter 10 00 AM
1:1500



3 Existing mid-winter 11 00 AM
1:1500



4 Existing mid-winter 12 00 Noon
1:1500



5 Existing mid-winter 1 00 PM
1:1500

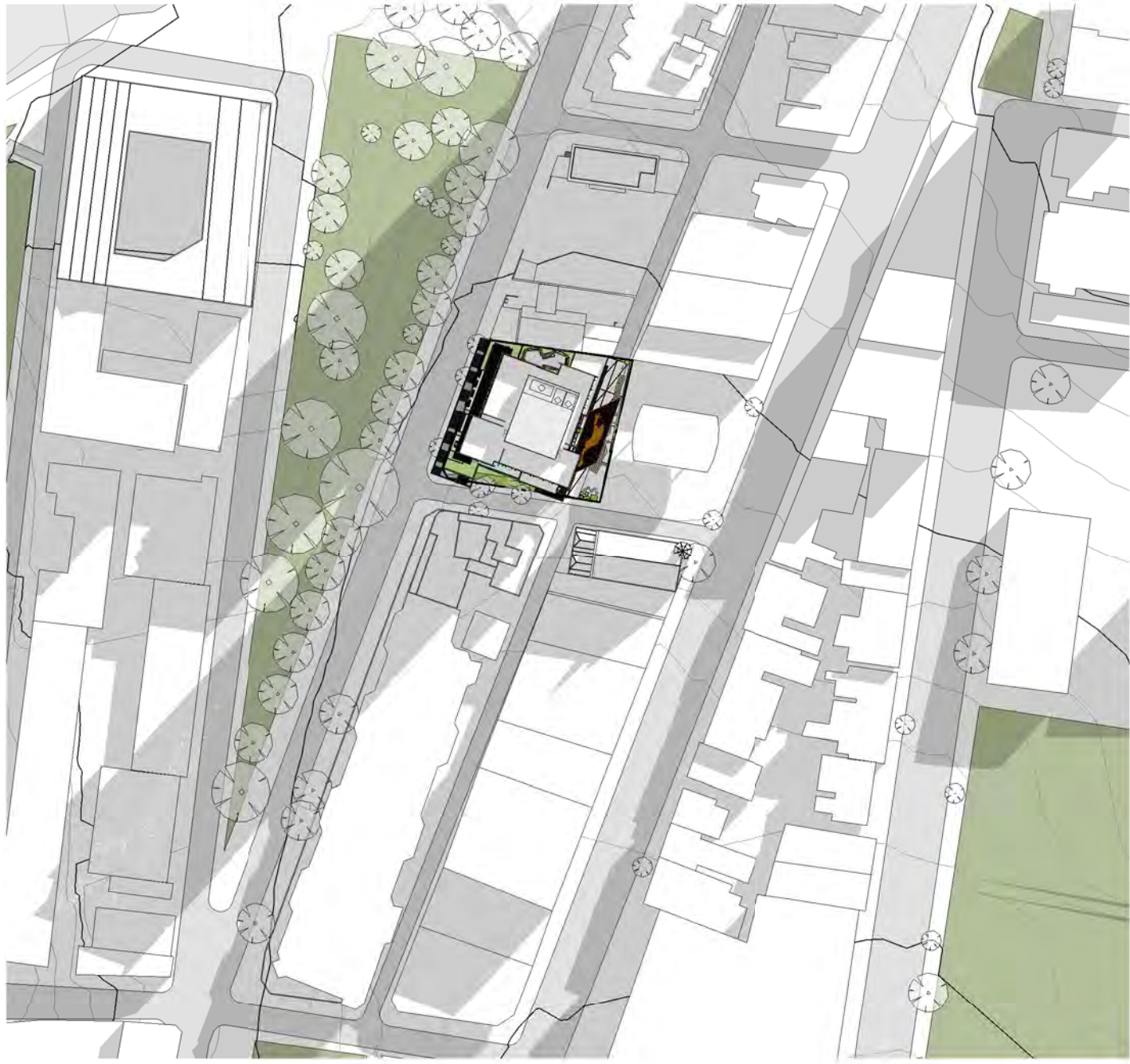


6 Existing mid-winter 2 00 PM
1:1500

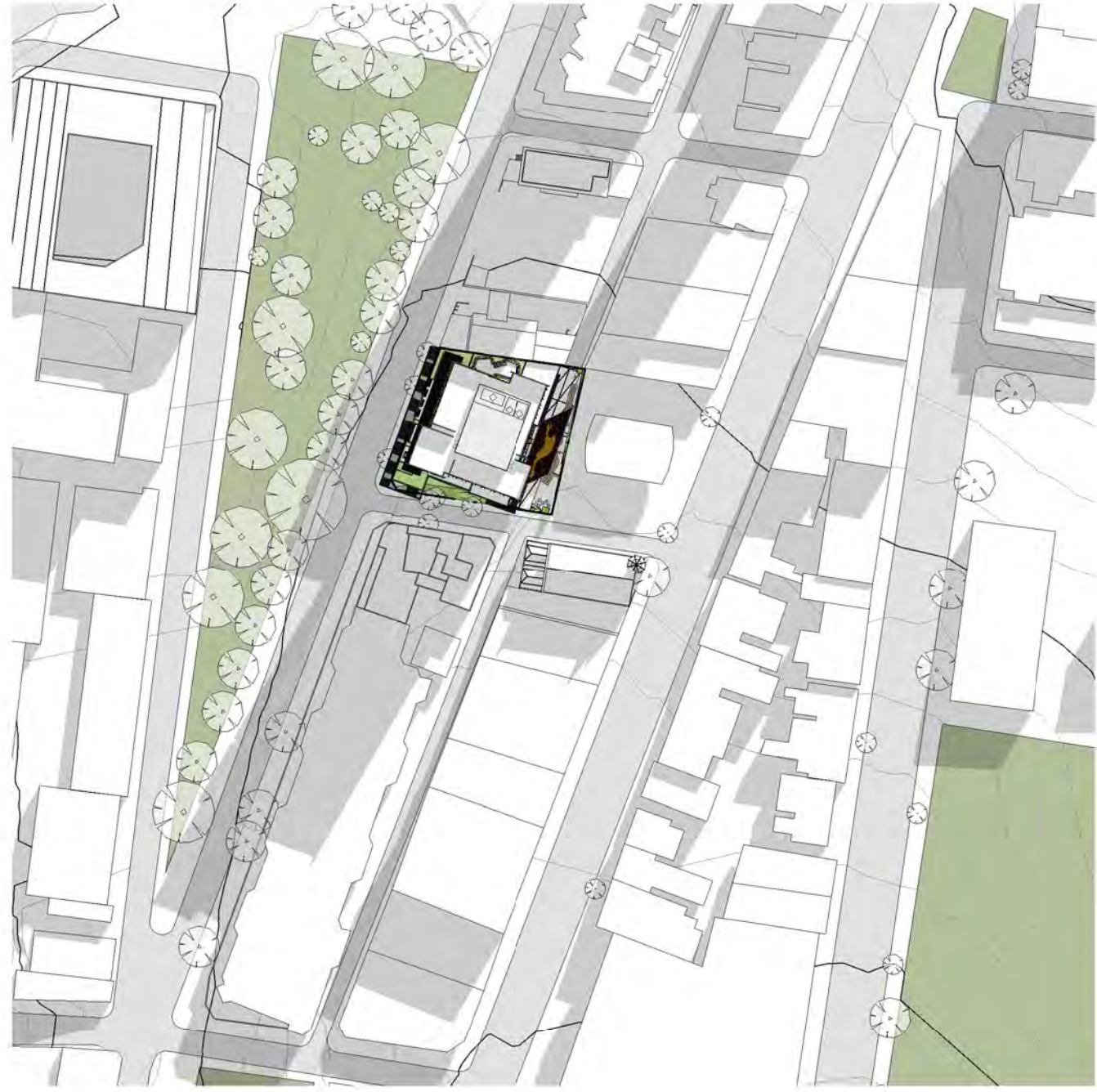


7 Existing mid-winter 3 00 PM
1:1500

	<div>Revisions</div> <table><tr><th>No.</th><th>Date</th><th>Description</th><th>Ver</th><th>App'd</th></tr><tr><td>01</td><td>10.01.2019</td><td>DA Issue</td><td>SO</td><td>BM</td></tr></table>	No.	Date	Description	Ver	App'd	01	10.01.2019	DA Issue	SO	BM	<div>Key</div> <div> N</div>	<div>Client</div> <p>The Trust Company Australia (Limited) ATF WH Gibbons Trust</p>	<div>Architect</div> <div> ALLEN JACK+COTTIER</div> <p>79 Myrtle Street Chippendale NSW 2008 AUSTRALIA ph +61 2 9311 8222 fx +61 2 9311 8200 ABN 53 003 782 250</p>	<div>Project</div> <p>WEE HUR STUDENT HOUSING 13-23 Gibbons Street, Redfern</p> <p>Proj. No. 18029</p>	<div>Drawing Title</div> <p>Shadow Diagrams Existing</p> <div>Sheet Status</div> <p>NOT FOR CONSTRUCTION</p>	<div>Scale</div> <p>1 : 1500 @A1</p> <div>Drawing No.</div> <p>DA5001 01</p> <div>Issue</div> <p>01</p>	<div>Scale</div> <p>0 15 30 60 120 m</p>
	No.	Date	Description	Ver	App'd													
01	10.01.2019	DA Issue	SO	BM														



1 Proposed mid-winter 9 00 AM
1:1500



2 Proposed mid-winter 10 00 AM
1:1500



3 Proposed mid-winter 11 00 AM
1:1500



4 Proposed mid-winter 12 00 Noon
1:1500



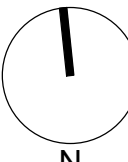


5 Proposed mid-winter 1 00 PM
1:1500



6 Proposed mid-winter 2 00 PM
1:1500



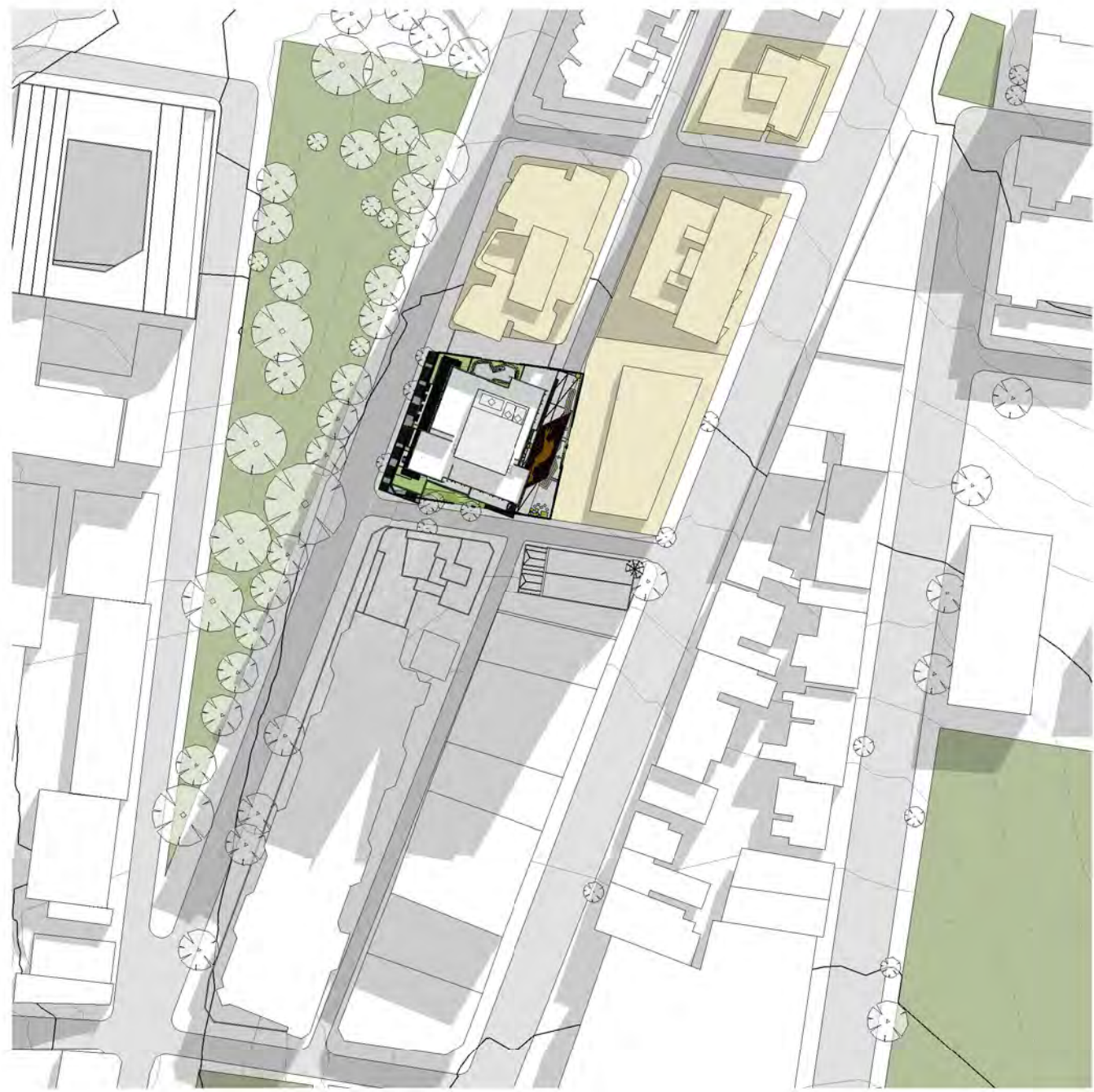
7 Proposed mid-winter 3 00 PM
1:1500

<div>Revisions</div> <table><tr><th>No.</th><th>Date</th><th>Description</th></tr><tr><td>01</td><td>10.01.2019</td><td>DA Issue</td></tr></table>			No.	Date	Description	01	10.01.2019	DA Issue	<div>Ver</div> SO <div>App'd</div> BM	<div>Key</div> <div>N</div>	<div>Client</div> <div>The Trust Company Australia (Limited) ATF WH Gibbons Trust</div>	<div>Architect</div> <div> ALLEN JACK+COTTIER 79 Myrtle Street Chippendale NSW 2008 AUSTRALIA ph +61 2 9311 8222 fx +61 2 9311 8200 ABN 53 003 782 250</div>	<div>Project</div> <div>WEE HUR STUDENT HOUSING 13-23 Gibbons Street, Redfern</div> <div>Proj. No. 18029</div>	<div>Drawing Title</div> <div>Shadow Diagrams Proposed</div> <div>Sheet Status</div> <div>NOT FOR CONSTRUCTION</div>	<div>Scale</div> <div>1 : 1500 @A1</div> <div></div>	<div>Drawing No.</div> <div>DA5002 01</div> <div>Issue</div>
No.	Date	Description														
01	10.01.2019	DA Issue														

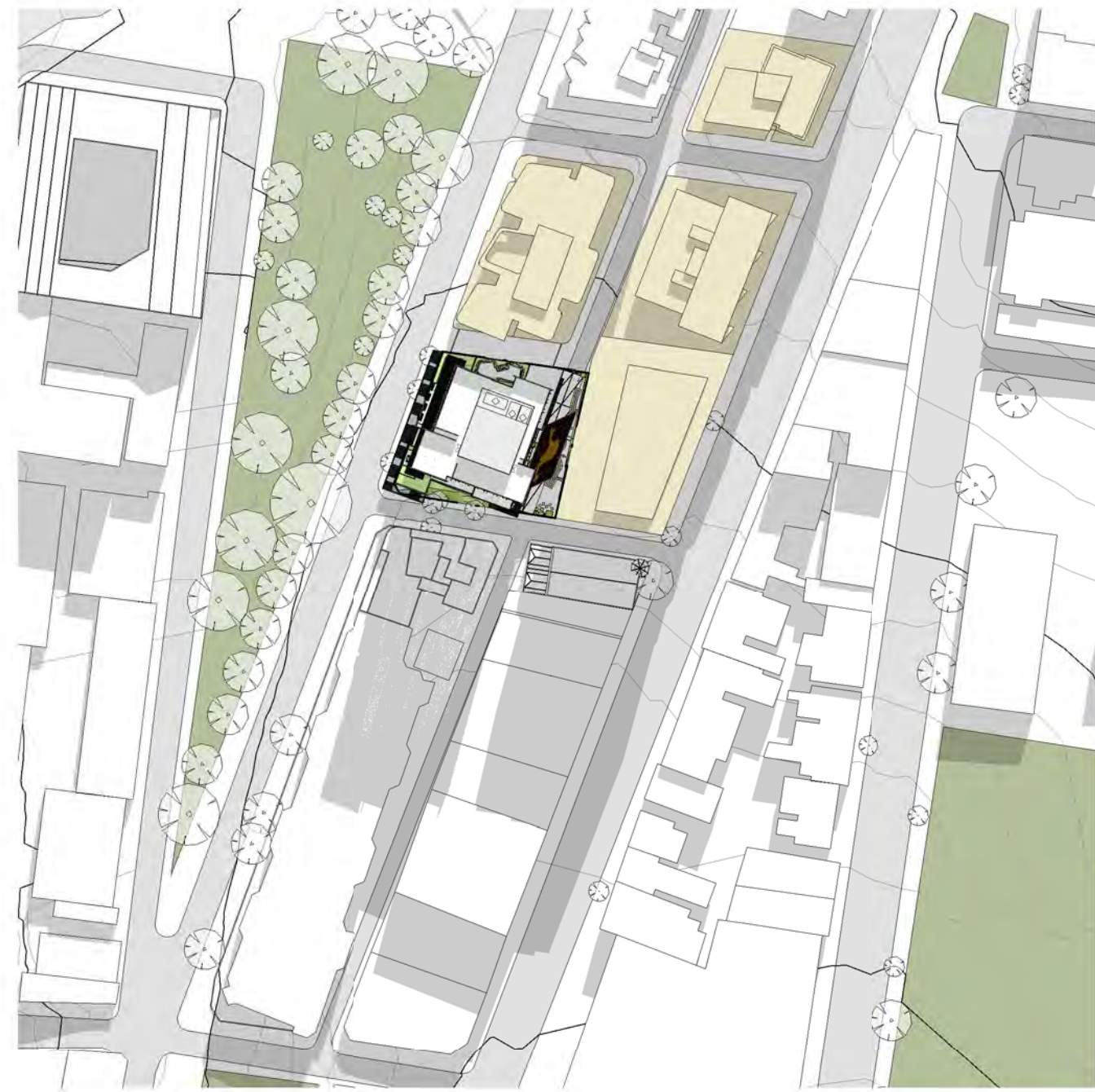
Do not scale drawings. Use figured dimensions only. Check & verify levels and dimensions on site prior to the commencement of any work, the preparation of shop drawings or the fabrication of components. This drawing is the copyright of Allen Jack + Cottier Architects and is protected under the Copyright Act 1968. Do not alter, reproduce or transmit in any form, or by any means without the express permission of Allen Jack + Cottier Architects. Nominated Architects: Michael Heenan 5264, Peter Ireland 6661



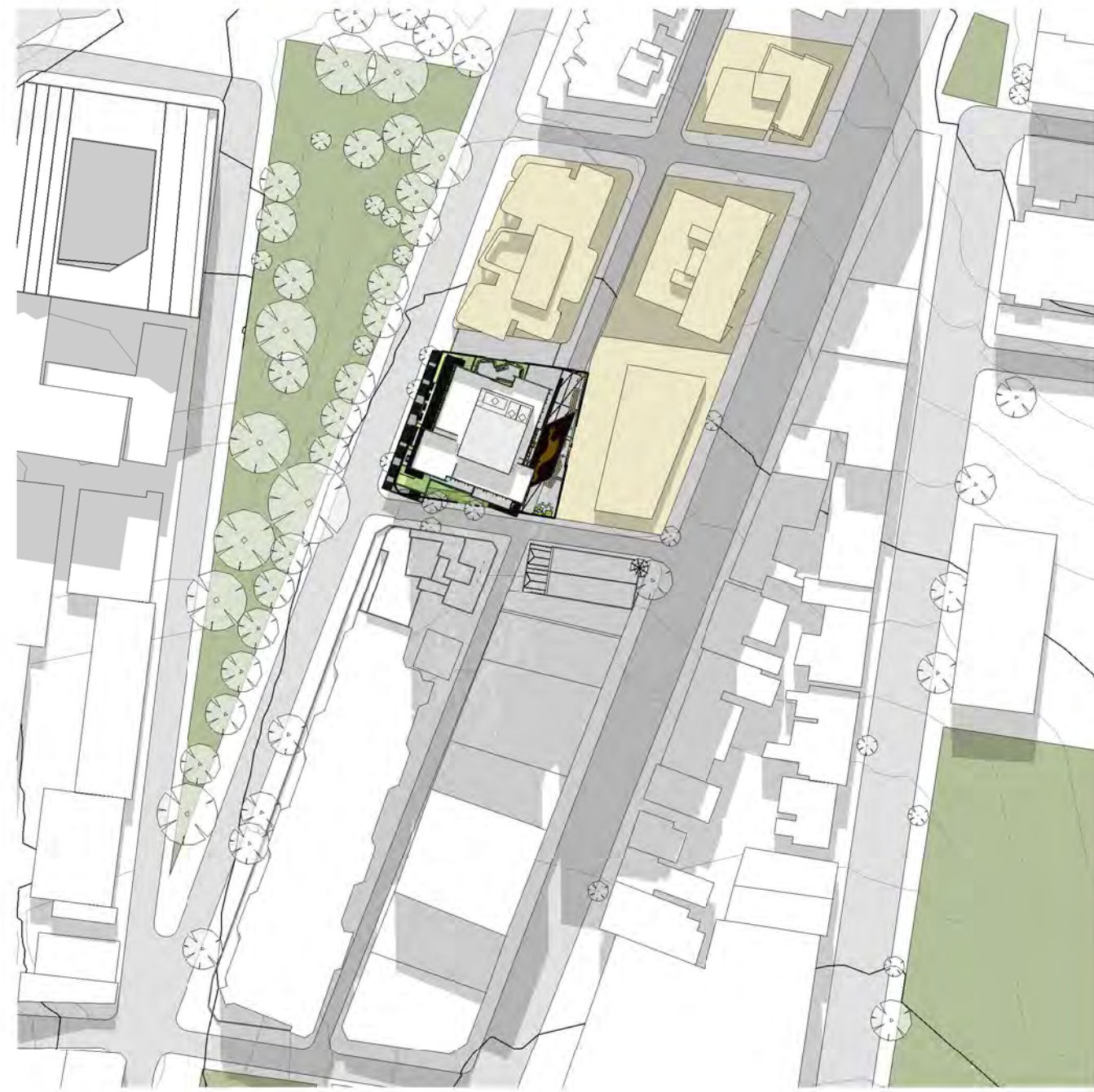
1 Proposed and Future Development mid-winter 9 00 AM
1:1500



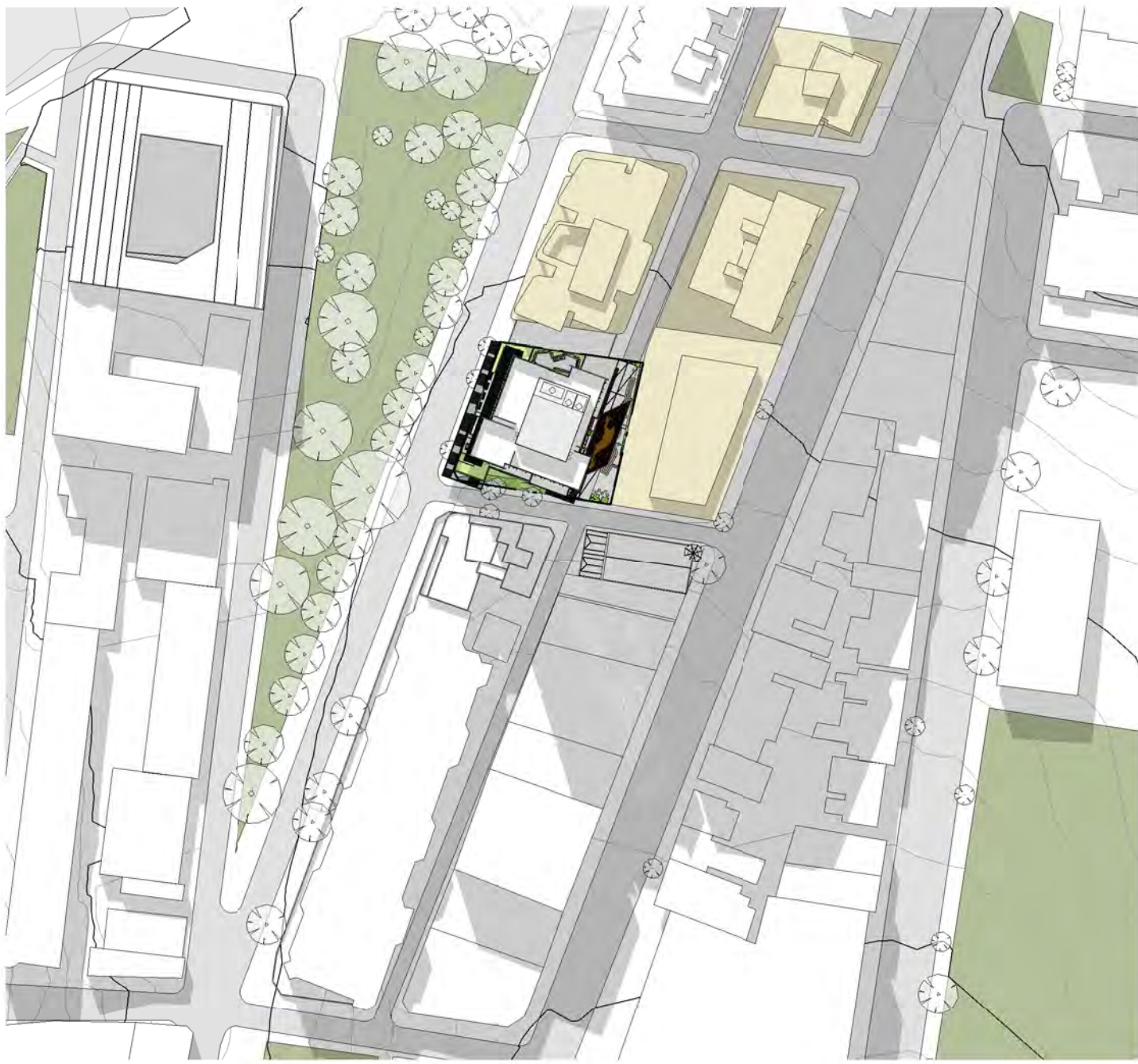
2 Proposed and Future Development mid-winter 10 00 AM
1:1500



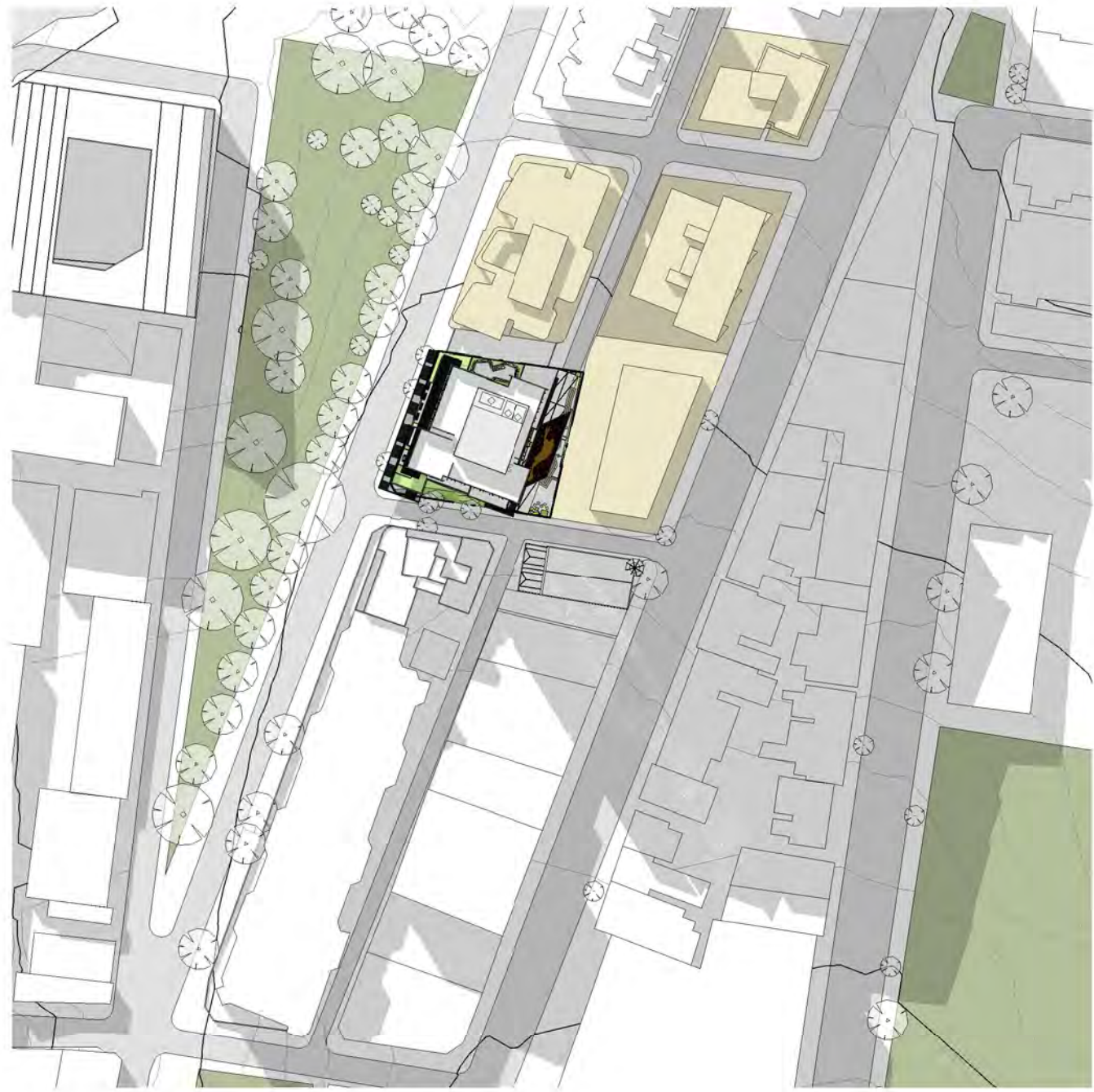
3 Proposed and Future Development mid-winter 11 00 AM
1:1500



4 Proposed and Future Development mid-winter 12 00 Noon
1:1500



5 Proposed and Future Development mid-winter 1 00 PM
1:1500



6 Proposed and Future Development mid-winter 2 00 PM
1:1500



7 Proposed and Future Development mid-winter 3 00 PM
1:1500

<div>Revisions</div> <table><tr><th>No.</th><th>Date</th><th>Description</th></tr><tr><td>01</td><td>10.01.2019</td><td>DA Issue</td></tr></table>	No.	Date	Description	01	10.01.2019	DA Issue	<div>Ver</div> <div>SO</div> <div>App'd</div> <div>BM</div> <div></div>	<div>Key</div> <div></div> <div>N</div>	<div>Client</div> <div>The Trust Company Australia (Limited)</div> <div>ATF WH Gibbons Trust</div>	<div>Architect</div> <div>AJ+C</div> <div>ALLEN JACK+COTTIER</div> <div>79 Myrtle Street Chippendale NSW 2008 AUSTRALIA</div> <div>ph +61 2 9311 8222 fx +61 2 9311 8200</div> <div>ABN 53 003 782 250</div>	<div>Project</div> <div>WEE HUR STUDENT HOUSING</div> <div>13-23 Gibbons Street, Redfern</div> <div>Proj. No. 18029</div>	<div>Drawing Title</div> <div>Shadow Diagrams Proposed and Future Development</div> <div>Sheet Status</div> <div>NOT FOR CONSTRUCTION</div>	<div>Scale</div> <div>1 : 1500</div> <div>@A1</div>	<div>Drawing No.</div> <div>DA5003 01</div>	<div>Issue</div> <div></div>
	No.	Date	Description												
01	10.01.2019	DA Issue													
<div>0</div> <div>15</div> <div>30</div> <div>60</div> <div>120 m</div>															

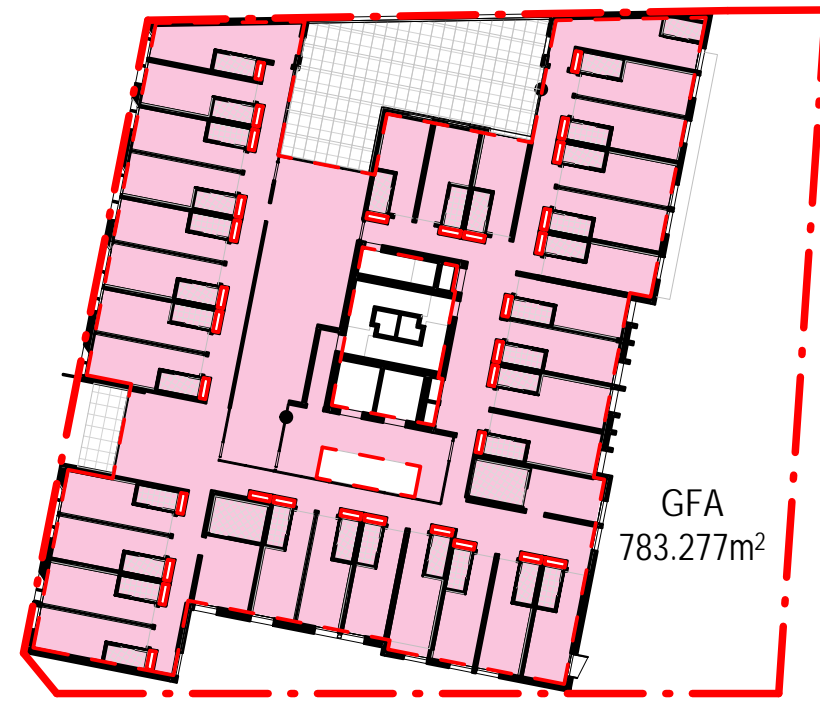
Do not scale drawings. Use figured dimensions only. Check & verify levels and dimensions on site prior to the commencement of any work, the preparation of shop drawings or the fabrication of components. This drawing is the copyright of Allen Jack + Cottier Architects and is protected under the Copyright Act 1968. Do not alter, reproduce or transmit in any form, or by any means without the express permission of Allen Jack + Cottier Architects. Nominated Architects: Michael Heenan 5264, Peter Ireland 6661



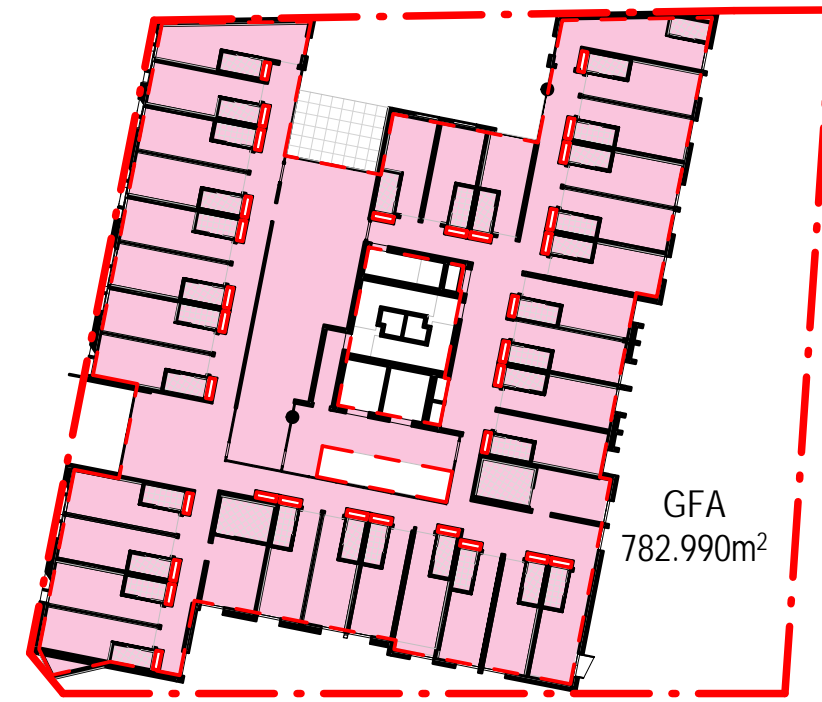
1 Basement 1:400



2 Level 1:400



3 Level 2 1:400



4 Level 3 1:400



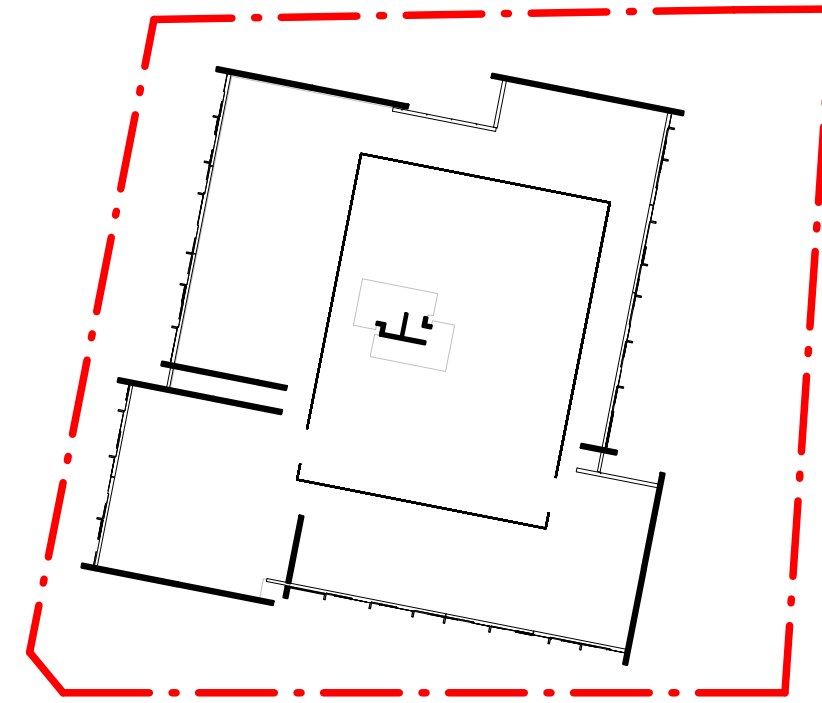
5 Level 4 1:400



6 Typical Tower 1:400

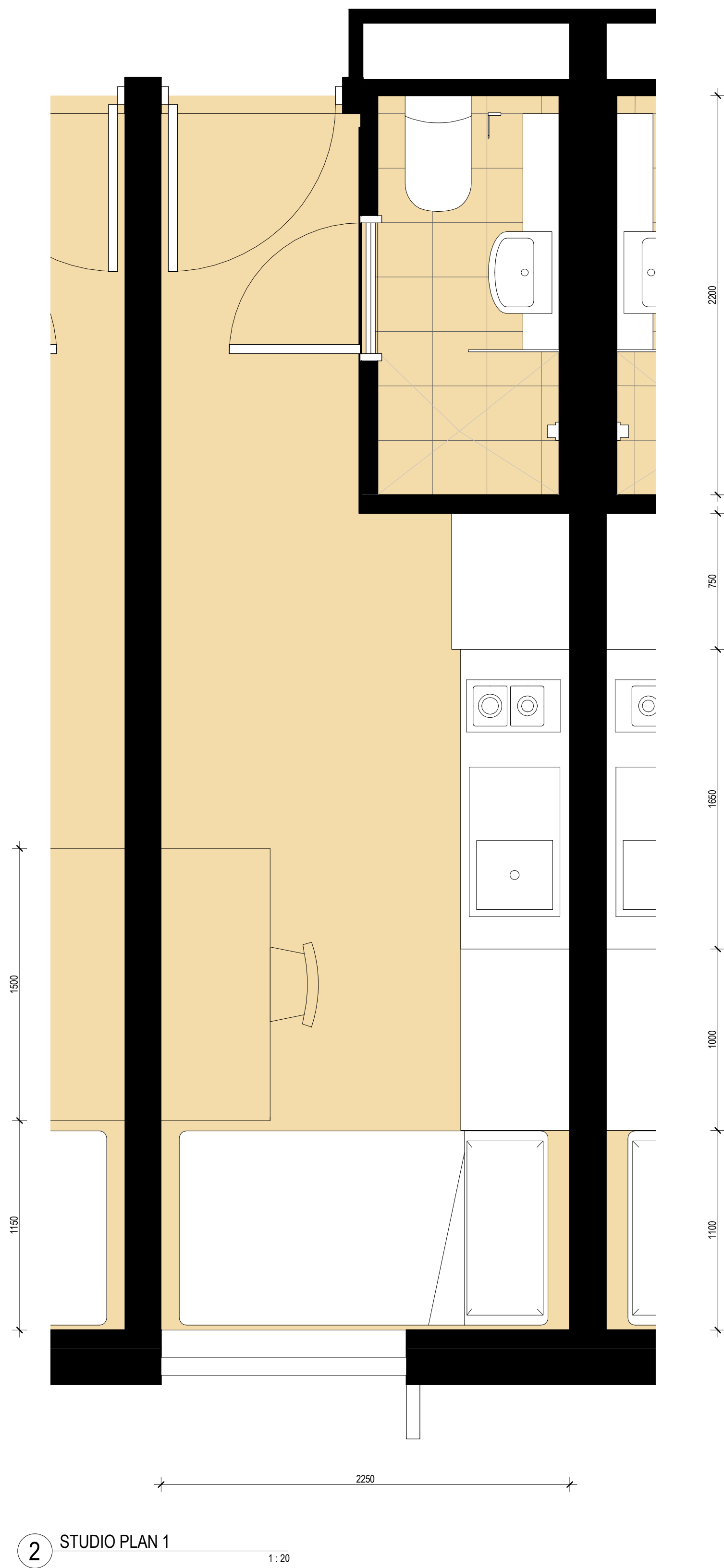
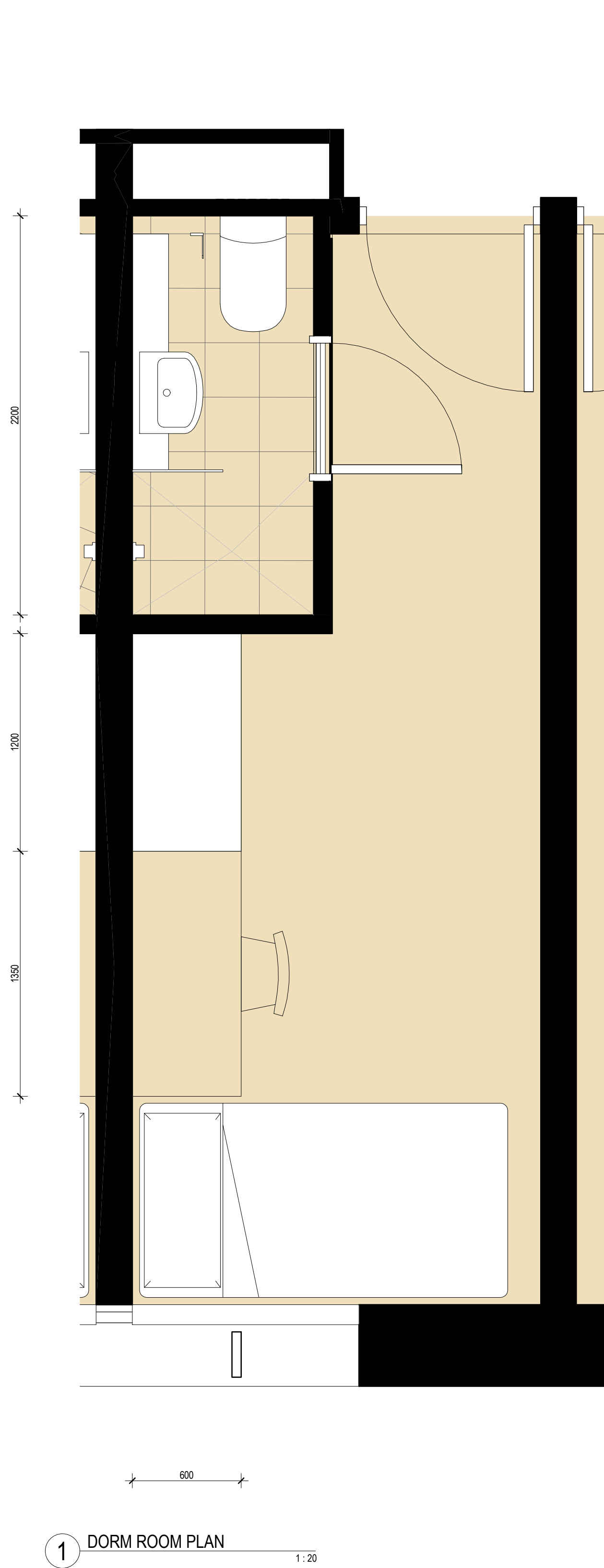


7 Level 18 1:400



8 Plant 1:400

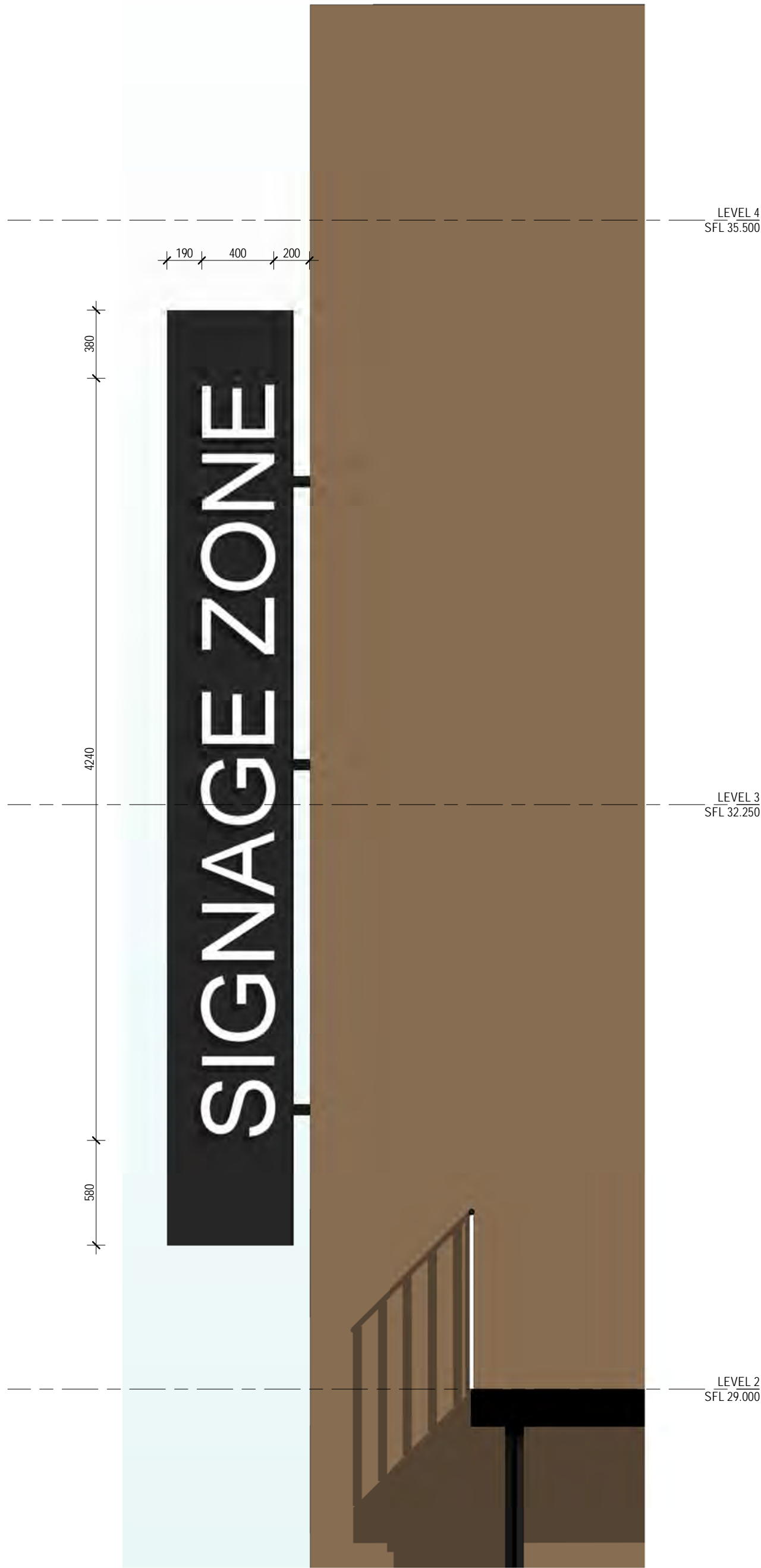
	<div>Revisions</div> <table><tr><th>No.</th><th>Date</th><th>Description</th></tr><tr><td>01</td><td>10.01.2019</td><td>DA Issue</td></tr></table>	No.	Date	Description	01	10.01.2019	DA Issue	<div>Client</div> <div>The Trust Company Australia (Limited) ATF WH Gibbons Trust</div>	<div>Architect</div> <div><div>AJ+C</div><div>ALLEN JACK+COTTIER</div><div>79 Myrtle Street Chippendale NSW 2008 AUSTRALIA ph +61 2 9311 8222 fx +61 2 9311 8200 ABN 53 003 782 250</div></div>	<div>Project</div> <div>WEE HUR STUDENT HOUSING 13-23 Gibbons Street, Redfern</div> <div>Proj. No. 18029</div>	<div>Drawing Title</div> <div>GFA Diagrams</div> <div>Sheet Status</div> <div>NOT FOR CONSTRUCTION</div>	<div>Scale</div> <div>1 : 400 @A1</div> <div>0481632 m</div> <div><div>Drawing No.</div><div>DA5103 01</div></div> <div><div>Issue</div></div>
No.	Date	Description										
01	10.01.2019	DA Issue										



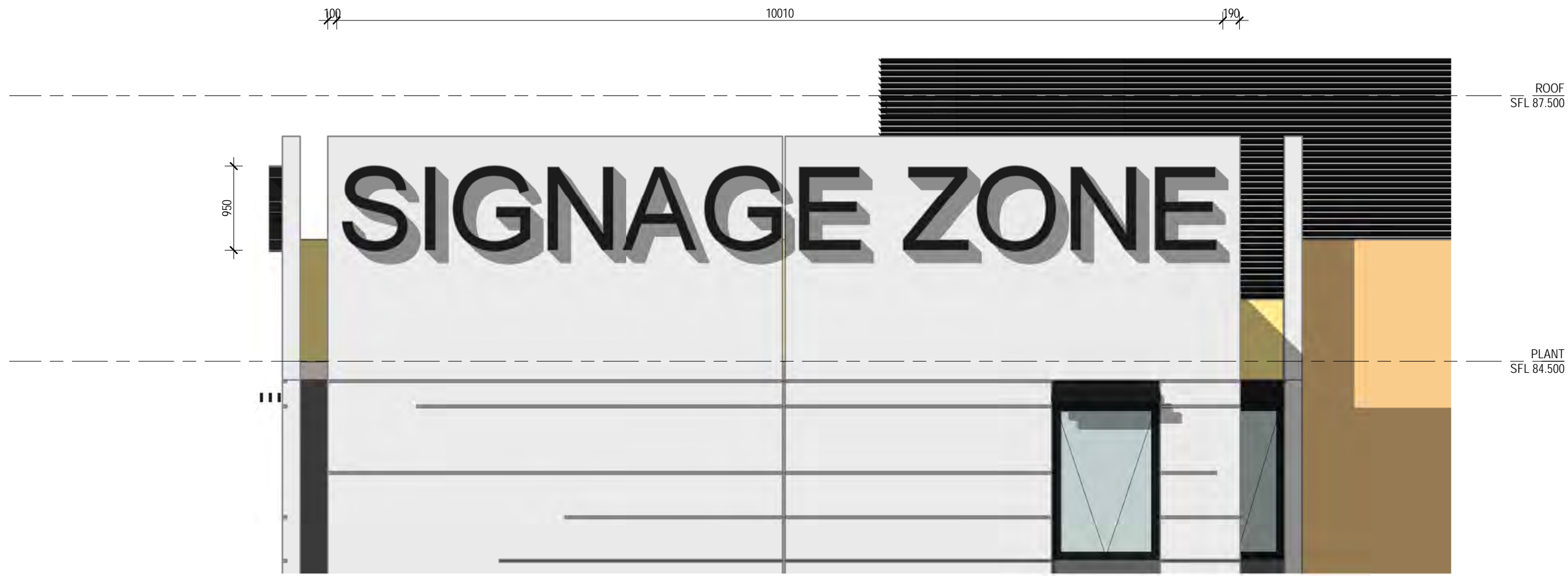
	Revisions			Client	Key	Architect	Project	Drawing Title	Scale	Drawing No.	Issue
	No.	Date	Description								
	01	10.01.2019	DA Issue	The Trust Company Australia (Limited) ATF WH Gibbons Trust		<div>AJ+C</div> <div>ALLEN JACK+COTTIER</div> <div>79 Myrtle Street Chippendale NSW 2008 AUSTRALIA ph +61 2 9311 8222 fx +61 2 9311 8200 ABN 53 003 782 250</div>	WEE HUR STUDENT HOUSING 13-23 Gibbons Street, Redfern	Standard Unit Plans	1 : 20 @A1	DA5104 01	
							Proj. No. 18029	Sheet Status NOT FOR CONSTRUCTION	<div>02004008001600mm</div>		



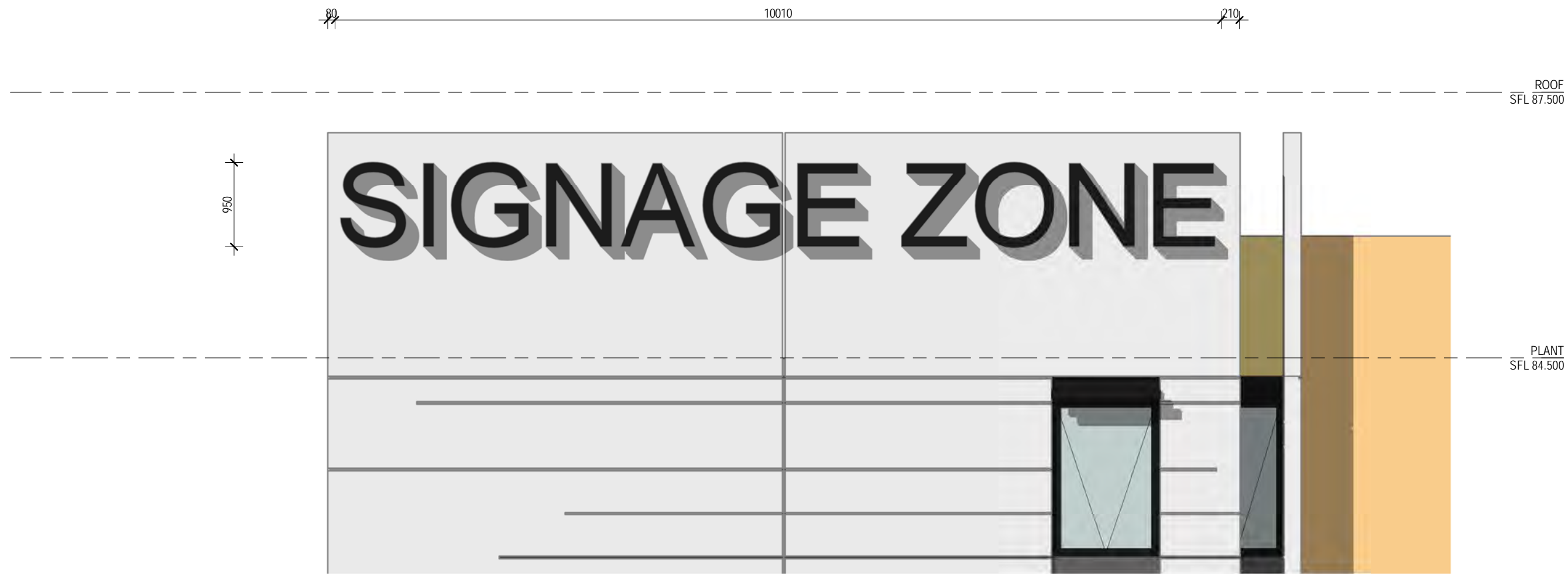
4 SOUTH SIGNAGE FROM WEST VIEW
1:25



6 SOUTH SIGNAGE FROM SOUTH VIEW
1:25



1 TOP EAST SIGNAGE
1:50



2 TOP SOUTH SIGNAGE
1:50

Revisions No. Date Description Ver SO App'd BM	Key	Client The Trust Company Australia (Limited) ATF WH Gibbons Trust	Architect AJ+C ALLEN JACK+COTTIER 79 Myrtle Street Chippendale NSW 2008 AUSTRALIA ph +61 2 9311 8222 fx +61 2 9311 8200 ABN 53 003 782 250	Project WEE HUR STUDENT HOUSING 13-23 Gibbons Street, Redfern Proj. No. 18029	Drawing Title Signage Detail Sheet Status NOT FOR CONSTRUCTION	Scale As indicated @A1	Drawing No. DA5106 01	Issue