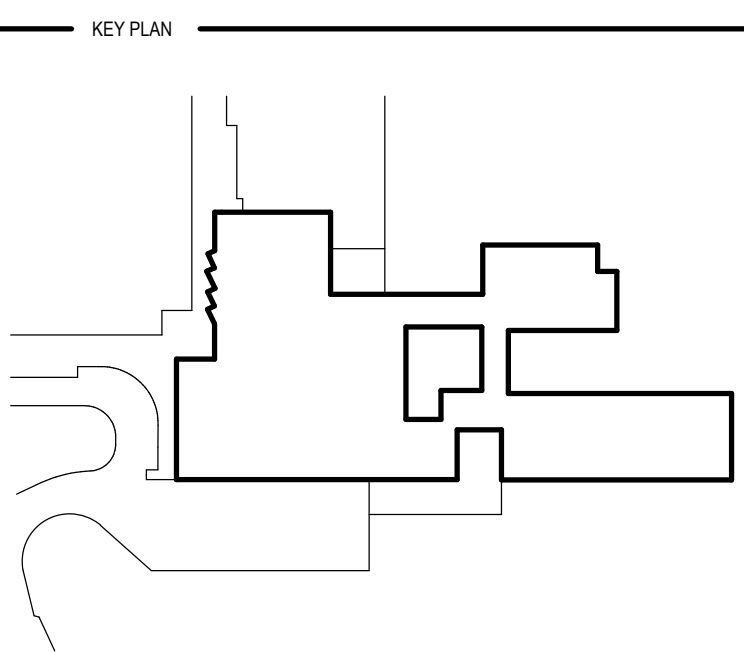


Drawing Register

| Drawing Number | Sheet Name |
|-------------------|-----------------------------------------------------------|
| MAH-AR-DWG-30-004 | REFLECTED CEILING PLAN - GROUND LEVEL - INPATIENT UNITS |
| MAH-AR-DWG-30-005 | REFLECTED CEILING PLAN - LEVEL 01 - ADMIN/HOSPITAL STREET |
| MAH-AR-DWG-30-006 | REFLECTED CEILING PLAN - LEVEL 01 - PERIOPERATIVE |
| MAH-AR-DWG-31-001 | CEILING DETAILS - SHEET 1 |
| MAH-AR-DWG-31-002 | CEILING DETAILS - SHEET 2 |
| MAH-AR-DWG-50-001 | ELEVATIONS - SHEET 1 |
| MAH-AR-DWG-50-002 | ELEVATIONS - SHEET 2 |
| MAH-AR-DWG-51-001 | SECTIONS - SHEET 01 |
| MAH-AR-DWG-51-002 | SECTIONS - SHEET 02 |
| MAH-AR-DWG-52-001 | EXTERNAL WALL DETAILS - SHEET 1 |
| MAH-AR-DWG-52-002 | EXTERNAL WALL DETAILS - SHEET 2 |
| MAH-AR-DWG-52-003 | EXTERNAL WALL DETAILS - SHEET 3 |
| MAH-AR-DWG-60-001 | KIT OF PARTS - LINE OF HEIGHTS |
| MAH-AR-DWG-60-002 | KIT OF PARTS - SANITARY - GRABRAILS |
| MAH-AR-DWG-60-003 | KIT OF PARTS - SANITARY - TOILET ASSEMBLIES - SHEET 1 |
| MAH-AR-DWG-60-004 | KIT OF PARTS - SANITARY - TOILET ASSEMBLIES - SHEET 2 |
| MAH-AR-DWG-60-005 | KIT OF PARTS - SANITARY - CHANGING PLACES |
| MAH-AR-DWG-60-010 | KIT OF PARTS - SANITARY - BASIN ASSEMBLIES |
| MAH-AR-DWG-60-020 | KIT OF PARTS - SANITARY - SHOWER & BATH ASSEMBLIES |
| MAH-AR-DWG-60-021 | KIT OF PARTS - SANITARY - MISCELLANEOUS ITEMS |
| MAH-AR-DWG-60-030 | KIT OF PARTS - SANITARY - SINKS |
| MAH-AR-DWG-60-040 | KIT OF PARTS - JOINERY - UNDERBENCH CUPBOARD UNITS |
| MAH-AR-DWG-60-050 | KIT OF PARTS - JOINERY - OVERBENCH CUPBOARD UNITS |
| MAH-AR-DWG-60-051 | KIT OF PARTS - JOINERY - TALL CUPBOARD UNITS |
| MAH-AR-DWG-60-060 | KIT OF PARTS - MISCELLANEOUS - SHEET 1 |
| MAH-AR-DWG-60-061 | KIT OF PARTS - MISCELLANEOUS - SHEET 2 |
| MAH-AR-DWG-60-062 | KIT OF PARTS - MISCELLANEOUS - SHEET 3 |
| MAH-AR-DWG-60-063 | KIT OF PARTS - MISCELLANEOUS - SHEET 4 |
| MAH-AR-DWG-60-070 | KIT OF PARTS - DOORS - SHEET 1 |
| MAH-AR-DWG-60-071 | KIT OF PARTS - DOORS - SHEET 2 |
| MAH-AR-DWG-60-072 | KIT OF PARTS - DOORS - SHEET 3 |
| MAH-AR-DWG-60-080 | KIT OF PARTS - INTERNAL WINDOWS & MIRRORS |
| MAH-AR-DWG-61-001 | FITOUT PLAN - LOWER GROUND - BACK OF HOUSE |
| MAH-AR-DWG-61-002 | FITOUT PLAN - LOWER GROUND - MORTUARY/FOOD SERVICES |
| MAH-AR-DWG-61-011 | FITOUT PLAN - GROUND LEVEL - COMMUNITY HEALTH |
| MAH-AR-DWG-61-012 | FITOUT PLAN - GROUND LEVEL - SHARED AREAS |
| MAH-AR-DWG-61-013 | FITOUT PLAN - GROUND LEVEL - IPU SUBCUTATE |

| Drawing Register | |
|------------------|--------------------------------------------------------------|
| Drawing Number | Sheet Name |
| MHAR-DWG-61-014 | FITOUT PLAN - GROUND LEVEL - EMERGENCY / MED IMAGING |
| MHAR-DWG-61-015 | FITOUT PLAN - GROUND LEVEL - MATERNITY/EMERGENCY |
| MHAR-DWG-61-016 | FITOUT PLAN - GROUND LEVEL - IPU ACUTE SHEET 1 |
| MHAR-DWG-61-017 | FITOUT PLAN - GROUND LEVEL - IPU ACUTE SHEET 2 |
| MHAR-DWG-61-021 | FITOUT PLAN - LEVEL 01 - CENTRAL ADMINISTRATION |
| MHAR-DWG-61-022 | FITOUT PLAN - LEVEL 01 - PERIOPERATIVE SHEET 1 |
| MHAR-DWG-61-023 | FITOUT PLAN - LEVEL 01 - PERIOPERATIVE SHEET 2 |
| MHAR-DWG-63-001 | FINISHES PLAN - LOWER GROUND - BACK OF HOUSE |
| MHAR-DWG-63-002 | FINISHES PLAN - GROUND LEVEL - COMMUNITY HEALTH |
| MHAR-DWG-63-003 | FINISHES PLAN - GROUND LEVEL - MATERNITY/EMERGENCY |
| MHAR-DWG-63-004 | FINISHES PLAN - GROUND LEVEL - INPATIENT UNITS |
| MHAR-DWG-63-005 | FINISHES PLAN - LEVEL 01 - ADMIN/HOSPITAL STREET |
| MHAR-DWG-63-006 | FINISHES PLAN - LEVEL 01 - PERIOPERATIVE |
| MHAR-DWG-63-101 | ART STRATEGY - GROUND LEVEL |
| MHAR-DWG-63-102 | ART STRATEGY - LEVEL 01 |
| MHAR-DWG-65-001 | INTERNAL ELEVATIONS - LOWER GROUND - BOH / ENGINEERING |
| MHAR-DWG-65-002 | INTERNAL ELEVATIONS - LOWER GROUND - ENGINEERING / ENV |
| MHAR-DWG-65-003 | INTERNAL ELEVATIONS - LOWER GROUND - ENV / MORT / SUPPLY |
| MHAR-DWG-65-101 | INTERNAL ELEVATIONS - GROUND LEVEL - ALO / CAFE / CEA |
| MHAR-DWG-65-102 | INTERNAL ELEVATIONS - GROUND LEVEL - COMMUNITY HEALTH |
| MHAR-DWG-65-103 | INTERNAL ELEVATIONS - GROUND LEVEL - COMMUNITY HEALTH |
| MHAR-DWG-65-104 | INTERNAL ELEVATIONS - GROUND LEVEL - COMMUNITY HEALTH |
| MHAR-DWG-65-105 | INTERNAL ELEVATIONS - GROUND LEVEL - COMMUNITY HEALTH |
| MHAR-DWG-65-106 | INTERNAL ELEVATIONS - GROUND LEVEL - COMM. HEALTH / PHARMACY |
| MHAR-DWG-65-107 | INTERNAL ELEVATIONS - GROUND LEVEL - MAIN ENTRY / PATHOLOGY |
| MHAR-DWG-65-108 | INTERNAL ELEVATIONS - GROUND LEVEL - MED IMAG / CANCER SUPP. |
| MHAR-DWG-65-109 | INTERNAL ELEVATIONS - GROUND LEVEL - EMERGENCY |
| MHAR-DWG-65-110 | INTERNAL ELEVATIONS - GROUND LEVEL - EMERGENCY |
| MHAR-DWG-65-111 | INTERNAL ELEVATIONS - GROUND LEVEL - EMERGENCY |
| MHAR-DWG-65-112 | INTERNAL ELEVATIONS - GROUND LEVEL - EMERGENCY |
| MHAR-DWG-65-113 | INTERNAL ELEVATIONS - GROUND LEVEL - IPU MATERNITY |
| MHAR-DWG-65-114 | INTERNAL ELEVATIONS - GROUND LEVEL - IPU MATERNITY |
| MHAR-DWG-65-115 | INTERNAL ELEVATIONS - GROUND LEVEL - IPU MATERNITY |
| MHAR-DWG-65-116 | INTERNAL ELEVATIONS - GROUND LEVEL - IPU MATERNITY |
| MHAR-DWG-65-117 | INTERNAL ELEVATIONS - GROUND LEVEL - IPU MATERNITY |
| MHAR-DWG-65-118 | INTERNAL ELEVATIONS - GROUND LEVEL - IPU ACUTE |
| MHAR-DWG-65-119 | INTERNAL ELEVATIONS - GROUND LEVEL - IPU ACUTE |

| Drawing Register | |
|------------------|-----------------------------------------------------------------|
| Sheet Number | Sheet Name |
| MAH-DWG-65-120 | INTERNAL ELEVATIONS - GROUND LEVEL - IPU ACUTE |
| MAH-DWG-65-121 | INTERNAL ELEVATIONS - GROUND LEVEL - IPU ACUTE |
| MAH-DWG-65-122 | INTERNAL ELEVATIONS - GROUND LEVEL - IPU SUB-ACUTE |
| MAH-DWG-65-123 | INTERNAL ELEVATIONS - GROUND LEVEL - IPU SUB-ACUTE |
| MAH-DWG-65-124 | INTERNAL ELEVATIONS - GROUND LEVEL - IPU SUB-ACUTE / SHARED |
| MAH-DWG-65-201 | INTERNAL ELEVATIONS - LEVEL 01 - ADMIN / EDUCATION |
| MAH-DWG-65-202 | INTERNAL ELEVATIONS - LEVEL 01 - PERIOPERATIVE |
| MAH-DWG-65-203 | INTERNAL ELEVATIONS - LEVEL 01 - PERIOPERATIVE |
| MAH-DWG-65-204 | INTERNAL ELEVATIONS - LEVEL 01 - PERIOPERATIVE |
| MAH-DWG-65-205 | INTERNAL ELEVATIONS - LEVEL 01 - PERIOPERATIVE |
| MAH-DWG-65-206 | INTERNAL ELEVATIONS - LEVEL 01 - PERIOPERATIVE |
| MAH-DWG-65-207 | INTERNAL ELEVATIONS - LEVEL 01 - PERIOPERATIVE |
| MAH-DWG-66-001 | ELEVATIONS & DETAILS - HOSPITAL STAIR & STAIR 2 |
| MAH-DWG-66-002 | INTERNAL PERSPECTIVES - MAIN ENTRY ARRIVAL |
| MAH-DWG-66-003 | INTERNAL PERSPECTIVES - MAIN RECEPTION |
| MAH-DWG-66-004 | INTERNAL PERSPECTIVES - CAFE & LIFT LOBBY |
| MAH-DWG-66-005 | INTERNAL PERSPECTIVES - CAFE DINING |
| MAH-DWG-66-006 | INTERNAL PERSPECTIVES - VIEW FROM HOSPITAL BRIDGE |
| MAH-DWG-67-001 | LIFT CAR INTERIORS |
| MAH-DWG-71-001 | SPECIAL JOINERY DETAILS - GROUND FLOOR - IPU & TYP TIMBER SCRIN |
| MAH-DWG-71-002 | SPECIAL JOINERY DETAILS - GROUND FLOOR - EMERGENCY |
| MAH-DWG-71-003 | SPECIAL JOINERY DETAILS - GROUND FLOOR - COMMUNITY HEALTH |
| MAH-DWG-71-004 | SPECIAL JOINERY DETAILS - GROUND FLOOR - CAFE |
| MAH-DWG-71-005 | SPECIAL JOINERY DETAILS - GROUND FLOOR - BENCH SEATS & PHARMACY |
| MAH-DWG-71-006 | SPECIAL JOINERY DETAILS - GROUND FLOOR - IPU ACUTE |
| MAH-DWG-71-007 | SPECIAL JOINERY DETAILS - LEVEL 01 - PERIOPERATIVE |
| MAH-DWG-72-001 | STAINLESS STEEL DETAILS |
| MAH-DWG-SK-020 | PRINCIPAL'S OPTION - RESUSCITATION BAY |

[illegible]

COPYRIGHT

ALL RIGHTS RESERVED. THIS WORK IS COPYRIGHTED AND CANNOT BE REPRODUCED OR COPIED IN ANY FORM OR BY ANY MEANS (GRAPHIC, ELECTRONIC OR MECHANICAL, INCLUDING PHOTOCOPYING) WITHOUT THE WRITTEN PERMISSION OF THE PRINCIPAL UNDER THE TERMS OF THE CONTRACT. ANY LICENCE, EXPRESS OR IMPLIED, TO USE THE DOCUMENT FOR ANY PURPOSE WHATSOEVER IS RESTRICTED TO THE TERMS OF THE AGREEMENT OR IMPLIED AGREEMENT WITH THE PRINCIPAL UNDER THE TERMS OF THE CONTRACT.

DIMENSIONS

**USE FIGURED DIMENSIONS, DO NOT SCALE. CONTRACTORS MUST
VERIFY ALL DIMENSIONS ON THE SITE BEFORE COMMENCING ANY
WORK OR MAKING ANY SHOP DRAWING WHICH MUST BE SUBMITTED
AND REVIEWED BEFORE MANUFACTURE.**

FIXTURES, FITTINGS & EQUIPMENT SPECIFICATIONS

SUBSTITUTE FF&E EQUIPMENT SPECIFICATIONS

THE FIT-OUT DESIGN AND DOCUMENTATION HAS BEEN COMPLETED ON THE BASIS OF FF&E AND EQUIPMENT ADVISED TO THIS OFFICE AT THE TIME OF BRIEFING THE DESIGN. THE DESIGN PROVISIONS FOR FF&E AND EQUIPMENT INCORPORATES SPATIAL ALLOCATIONS, SERVICING, LOADING AND ACCESS CLEARANCES AND WHERE NECESSARY THE SERVICES TO BE PROVIDED. THE DESIGN DOES NOT INCLUDE FIXTURES AND FITTINGS. IT SHOULD BE NOTED THAT SUBSTITUTE FF&E OR EQUIPMENT WITH ALTERNATE SPECIFICATIONS SHOULD NOT BE PROCURED PRIOR TO VALIDATING THOSE SPECIFICATIONS AGAINST THE ITEM CONTROL SCHEDULE AND DESIGN PROVISIONS IN THE MODEL. THIS OFFICE ACCEPTS NO RESPONSIBILITY FOR THE PROPOSED SUBSTITUTE FF&E AND EQUIPMENT. THE DESIGN HAS BEEN REVIEWED AND VALIDATED AGAINST THE ORIGINAL DESIGN PROVISIONS.

SERVICE POINTS DISC L A I M E E

THE SERVICE POINTS IDENTIFIED ON THESE DRAWINGS HAVE BEEN OVERLAYED FROM THE BUILDING SERVICES ENGINEERING MODEL, AND ARE PROVIDED FOR INFORMATION AND SET-OUT PURPOSES ONLY. WE HAVE BEEN ADVISED BY THE SERVICES ENGINEERS THAT THE POINTS REPRESENTED ON THESE DRAWINGS ARE CORRECT AT THE TIME OF PUBLICATION. THIS OFFICE DOES NOT WARRANT THE ACCURACY OF THIS DATA. REFER TO THE BUILDING SERVICES ENGINEERING DOCUMENTATION FOR THE INSTALLATION OF THE SERVICES POINTS, AND THE INTERFACE BETWEEN THE SERVICES POINTS AND THE RESPECTIVE ENGINEERING SYSTEMS.

ISSUE FOR TENDER

ARCHITECTS



ABN: 73 561 269 057
3 GLENARM ROAD, GLEN IRIS,
VICTORIA 3146
PH: (03) 9885 2333 FAX: (03) 9885 2455
THIS ARCHITECTURAL DESIGN IS THE
COPYRIGHT OF
SILVER THOMAS HANLEY (VIC) PTY LTD
ABN 73 561 269 057
AND SHALL NOT BE REPRODUCED
WITHOUT THEIR WRITTEN PERMISSION

CLIENT



Health
Infrastructure

PROJECT

MACKSVILLE HOSPITAL REDEVELOPMENT

MACKSVILLE NSW, 2447

— DRAWING TITLE

COVER SHEET

SCALE _____ DATE _____ DRAWN BY _____ CHECKED _____
1: 3000@A1 21/09/2018 AL MT

PROJECT No. _____ DRAWING No. _____ REVISION _____

10400 MH-AR-DWG-00-000 **D**
