

AWNING/ROOFING AND EXTERNAL WALL SYSTEM DISCLOSURE STATEMENT (DESIGN)

AWNING/ROOFING AND EXTERNAL WALL COMPONENTS (TYPE A & B CONSTRUCTION)

This statement must be completed by a Registered Architect, Façade Engineer, suitably qualified Design Manager

Project Name	Concord Hospital Redevelopment
Address	Hospital Road, Concord NSW 2139
Part of Building	Level 6 and Facade
BCA referred to	BCA 2016 Amendment 1

- I confirm that the table provided overleaf identifies all the proposed works and external wall elements designed for the subject development, including the component elements of those systems, and any attachments thereto.
- I have undertaken reasonable investigations to ascertain that these systems and components comply with the non-combustibility requirements of Clause C1.9 of the BCA, such as reviewing product technical information, fire test reports, code mark certificates, fire-engineer's reports and external consultant advice.
- Attachments to the building comply with clause C1.14 of the BCA.
- Supporting documents that demonstrate compliance for attachments to walls for the relevant sections of the BCA are provided and attached.
- I am a suitably qualified person and my qualifications and accreditations are listed below.
- The information contained in this statement is true and accurate to the best of my knowledge.

Relevant qualifications and accreditations: BE (Hons), MIE Aust

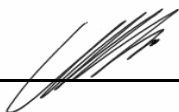
Name: Chris Beuzeville

Company: Calare Civil Pty Ltd

Address: 170 Rankin Street, Bathurst NSW 2795

Phone No. 02 63323343 Fax No. n/a

Signature



25/08/2021
Date

EXTERNAL WALL ELEMENTS TABLE The table below must be completed for all wall types.

LINING / CLADDING / BUILDING ATTACHMENTS MATERIAL *(Note. Nominate every type of external cladding, attachment and/or wall material)*

External/Cladding Material (Eg Fibre cement, Aluminium composite panel, masonry, steel members etc)	Elevation(s)	Structural frame material	Manufacturer (Eg, Alucobond, Vitracore etc)	Product Name (Eg, Alucobond Plus, Vitracore G2 etc)	Test certificate, Codemark certificate or Fire Engineering Report (List all documents evidencing compliance)	Nominated or proprietary installation requirements (relevant installation details or guidelines must be listed below and attached)
Aluminium	All Elevations	Aluminium	CVS Equipment	090S		

INSULATION *(list all types incorporated in the external wall systems)*

Material	Elevation	Manufacture (Eg, CSR etc)	Product Name	Test certificate reference
Rockwool etc				
Nil				

SARKING *(list all types incorporated in the external wall systems)*

Manufacture (Eg, CSR etc)	Elevation	Product Name	Test certificate reference
Nil			

OTHER SUPPORTING DOCUMENTATION

List below

Manufacturer / Product	Document	Reference Number	Date

EXTERNAL WALL SYSTEM DISCLOSURE CERTIFICATE (INSTALLATION)

EXTERNAL & COMMON WALL COMPONENTS (TYPE A & B CONSTRUCTION)

Note. This certificate must be completed by the Head Contractor's representative or other supervising professional such as the Project Architect or Façade Engineer

Project Name	Concord Hospital Redevelopment
Address	Hospital Rd, Concord NSW 2139
Part of Building to be certified	Level 6 and Façade
External Wall System Disclosure Certificate (Design) Date	25/08/2021

I hereby certify that

- I have reviewed and inspected the installation of the external wall systems for the project;
- The wall systems have been installed as nominated in the approved External Wall System Disclosure Statement for the project which is attached;
- The wall systems have been installed in accordance with any relevant Manufacturer's installation requirements, Code Mark Certificate requirements, relevant Fire-safety Engineering requirements and any other requirements necessary to ensure compliance;
- Only the products identified in the External Wall System Disclosure Certificate (Design) have been installed and substitute products have not been used.
- ~~The wall systems have been installed as nominated in the Section J Assessment Report and BCA 2016 Amendment 1~~
- The wall systems installed are consistent with all Fire Engineering Reports applicable to the building
- ~~The wall systems installed comply with the Performance Requirements of FP1.4 of the BCA 2016 Amendment 1 for Weatherproofing~~
- The wall systems installed are consistent with the SSD stamp approved plans as referenced in SSD
- No Aluminium Composite Panels were used in the external wall system.
- I am a properly qualified and experienced person and have a good working knowledge of the relevant requirements referenced above. (My qualifications and accreditations are listed below)
- The information contained in this statement is true and accurate to the best of my knowledge.

Relevant qualifications and accreditations: Louvre and Screen Installations
21 years

Name: Rodney Gaine
 Company: CVS Equipment

Address: 7 Airds Rd, Minto NSW 2566

Phone No. 02 8796 3000

Fax No. 02 8796 3030

Signature 

Date 1/9/2021

EXTERNAL WALL ELEMENTS TABLE The table below must be completed for all wall types.

LINING / CLADDING / BUILDING ATTACHMENTS MATERIAL *(Note. Nominate every type of external cladding, attachment and/or wall material)*

External/Cladding Material <i>(Eg Fibre cement, Aluminium composite panel, masonry, steel members etc)</i>	Elevation(s)	Structural frame material	Manufacturer <i>(Eg, Alucobond, Vitracore etc)</i>	Product Name <i>(Eg, Alucobond Plus, Vitracore G2 etc)</i>	Test certificate, Codemark Report <i>(List all documents evidencing compliance)</i>	Nominated or proprietary installation requirements <i>(relevant installation details or guidelines must be listed below and attached)</i>
Aluminium	All Elevations	Aluminium	CVS Equipment	090S		

INSULATION *(list all types incorporated in the external wall systems)*

Material	Elevation	Manufacture <i>(Eg, CSR etc)</i>	Product Name	Test certificate reference
Rockwool etc				
Nil				

SARKING *(list all types incorporated in the external wall systems)*

Manufacture <i>(Eg, CSR etc)</i>	Elevation	Product Name	Test certificate reference
Nil			

OTHER SUPPORTING DOCUMENTATION

List below

Manufacturer / Product	Document	Reference Number	Date
As attached			

ELEVATION DEMARICATION PLAN

Drawing number	Drawing title	Revision	Date	Prepared by
As attached				



CVS Equipment Pty Ltd

PH (02) 8796 3000

FX (02) 8796 3030

EM info@cvsgroup.com.au

7 Airds Road
PO Box 5107
Minto NSW 2566

ABN 18 851 332 160

Installation Certificate

Project Name: Concord Hospital Redevelopment

Project Address: Hospital Road, Concord NSW 2139

This is to certify that the louvres have been manufactured in accordance with the relevant approved drawings, specifications, Building Codes of Australia and all relevant Australian Codes and Standards.

Relevant Standards are AS1866:1997, AS2047:2014 Section 7 and AS1530.1:1994

BCA 2019 Amendment 1 clause C1.9

Yours Faithfully,

A handwritten signature in black ink, appearing to read 'Richard Ellis'.

Richard Ellis

Manager



FREEFLOW LOUVRES

CVS Freeflow Stormproof Louvres are designed to achieve the engineering and architectural requirements for natural ventilation and screening.

They are a perfect solution where natural ventilation is required while still maintaining a level of weather resistance and aerodynamic efficiency.



Most common uses for CVS Freeflow Stormproof Louvres are:

- Ventilating Plant and Equipment Rooms
- Building Facades
- Mechanical Intakes and Exhausts
- Plant Screens
- Warehouse Ventilation
- Pump Room Ventilation



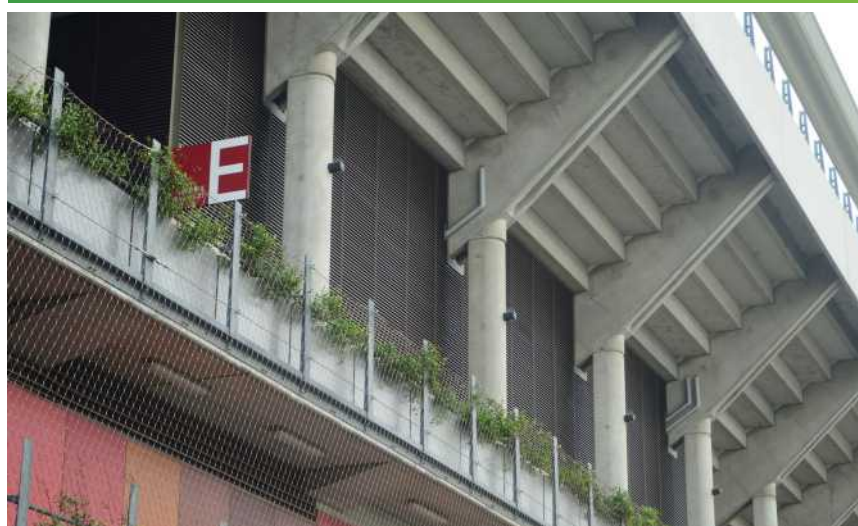
CVS Freeflow Stormproof Louvres can be configured as fixed exposed modular louvre panels or as a fixed concealed mullion continuous line louvre.

All CVS Freeflow Stormproof Louvres are custom built to any length or height. Alternatively, louvre blades can be inverted or installed vertically.

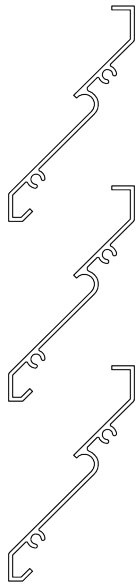


CVS Freeflow Stormproof Louvres can be manufactured from a range of materials including:

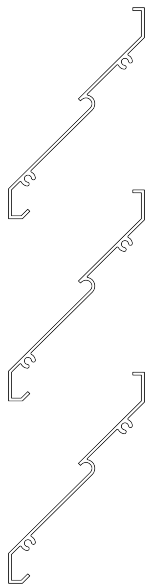
- Aluminium
- Colorbond
- Galvanised Steel
- Stainless Steel



CVS Freeflow Stormproof Louvres can be coated in a range of different finishes to suite specific requirements, including warranty and custom colour powder coat through to bright coloured anodising.



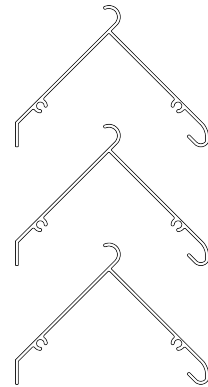
050S
50mm



075S
75mm



090S
90mm



095SC
95mm



Louvre & Sunscreen Specialists

☎ 02 8796 3000
✉ sales@cvsgrgroup.com.au

www.cvsgrgroup.com.au



CERTIFICATE

Material Fire Test Certificate

IGNL-3244-01-01 I01R00
Date of Test 18-Nov-19
ISSUED 11-Dec-19
EXPIRY 10-Dec-24

Specimen Identification

5005 3mm Aluminium Sheet

Specimen Description

The sponsor described the tested specimen as:
16 unpainted aluminium discs were stacked with a thickness of 3mm to the required specimen height

AS 1530.1-1994:
COMBUSTIBILITY TEST FOR
MATERIALS

Test Method and Deviation

Five (5) Specimens were tested in accordance with Australian Standard 1530 Methods for fire testes on building materials, components and structures, Part 1- 1994: Combustibility Test for Materials. The test apparatus is constructed in accordance with the requirements of ISO 1182:2010 which has been verified to be equivalent to the apparatus requirements of AS 1530.1:1994.

Observations

In accordance with Appendix A4 of AS 1530.1-1994, the melt temperature of the test specimen is below the stabilised furnace temperature. This results in a potential for the specimen to be thermally unstable as a phase change may occur.

The specimens had no phase change during or after the test.

Sponsor

Capral Aluminium Ltd
151 Barry Road
Campbellfield VIC 3061
www.capral.com.au

Specimen

The test specimens are cylindrical and each has -

(a). Nominal diameter (mm):	44.14 ± 0.1
(b). Nominal height (mm):	49.5 ± 0.22
(c). Nominal volume (cm3):	75.7 ± 0.42
(d). Nominal mass (g):	194.18 ± 0.98
(e). Colour:	Aluminium

TEST BODY

Ignis Labs Pty Ltd
ABN 36 620 256 617
3 Cooper Place
Queanbeyan NSW 2602
www.ignislabs.com.au
(02) 6111 2909

Results

	Symbol	Arithmetic
Mean furnace thermocouple temperature rise:	ΔTf	43.77 ± 8.36 °C
Mean specimen centre thermocouple temperature rise:	ΔTc	0.38 ± 8.36 °C
Mean specimen surface thermocouple temperature rise:	ΔTs	16.31 ± 8.36 °C
Mean duration of sustained flaming:		0 s
Mean mass loss:		0 ± 0 %

Combustibility

The specimens are deemed NOT COMBUSTIBLE according to the test criteria specified in clause 3.4 of as 1530.1- 1994.

Test Technician

Ian Downes

Test Engineer

Ram Prakash



Benjamin Hughes-Brown FEA, CPE, CPEng, NER, APEC Engineer, IntPE(Aust)

Chartered Professional Engineer
CPEng, NER (Fire Safety), M(Sch) 2590091, RFE011498, BFB-C10-1875, EF-39394,
MFireSafety (UWS), CEng (UTS), Grad.Dip.BustFire (UWS), DipEngPrac (UTS), DipEng (CMT)

Version:

Issue 01 Revision 02 | 22.10.2019

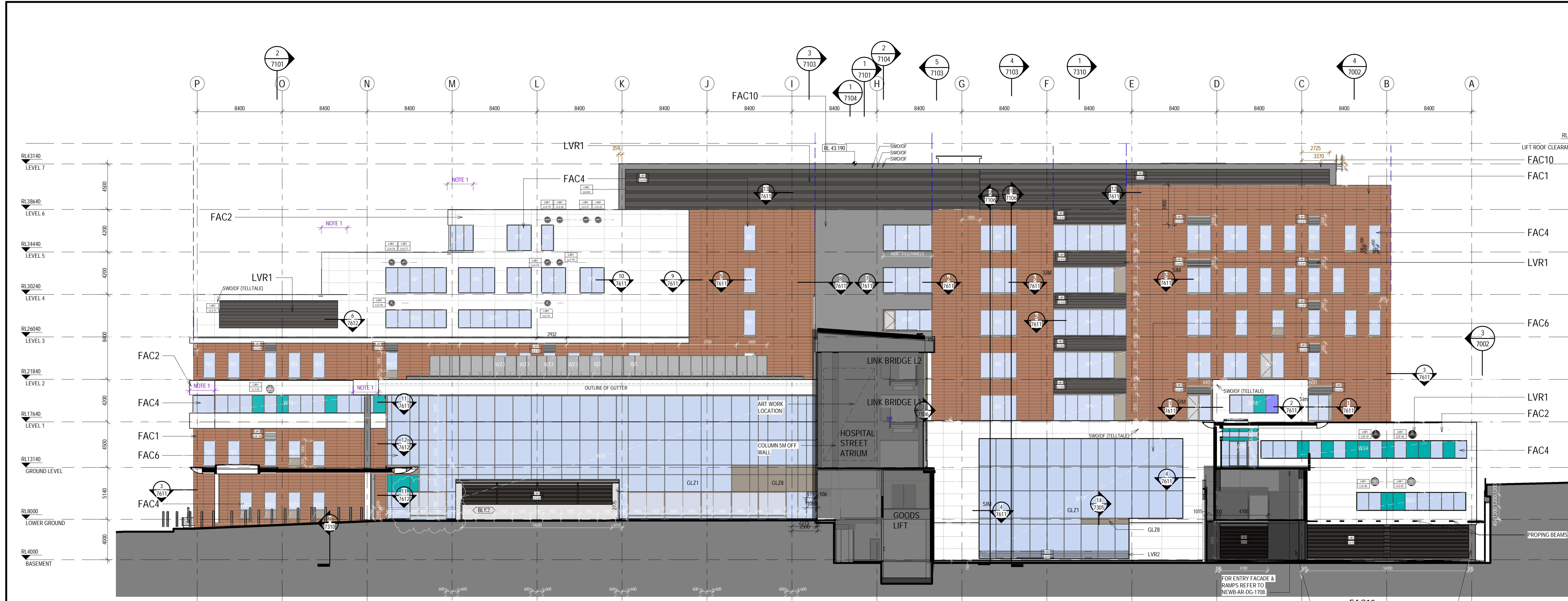
Disclaimer

These test results relate only to the behaviour of the test specimens of the material under the particular conditions of the test, and they are not intended to be the sole criterion for assessing the potential fire hazard of the material in use.

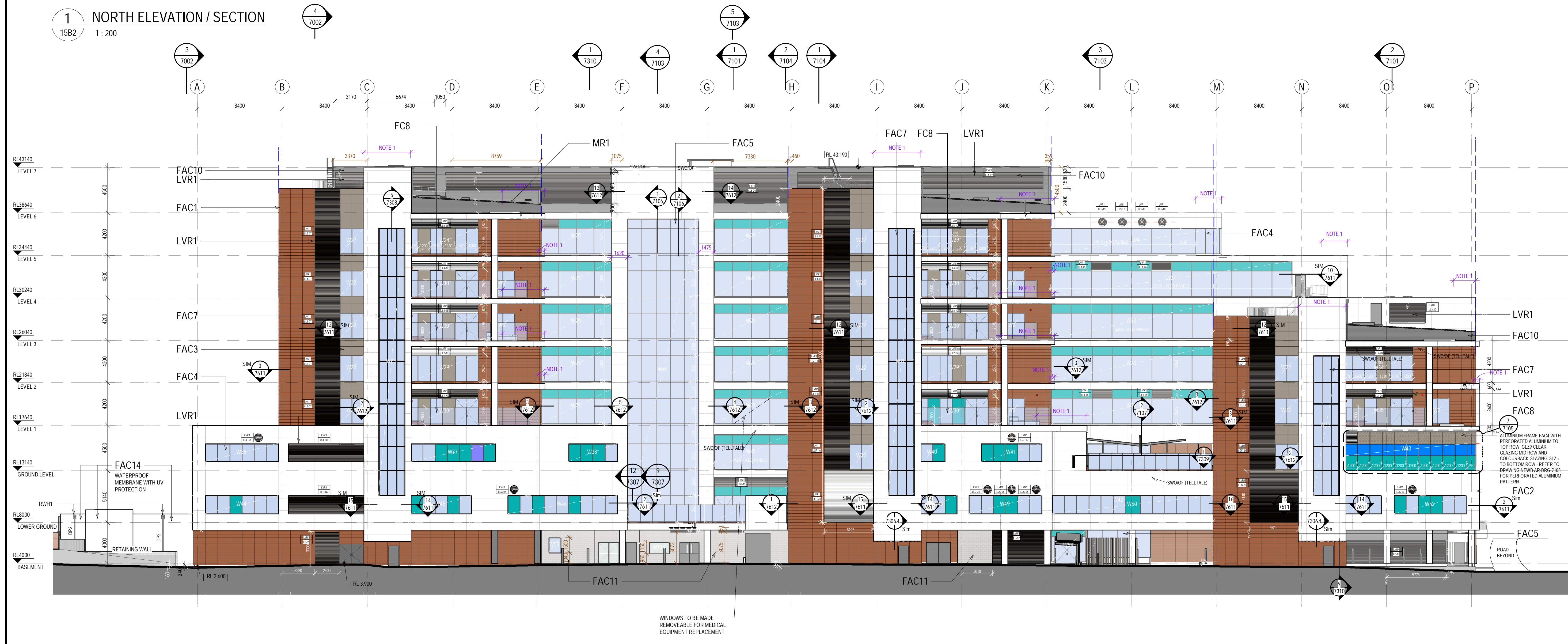
The information contained in this document is provided for the sole use of the recipient and no reliance should be placed on the information by any other person. In the event that the information is disclosed or furnished to any other person, the Ignis Labs Pty accepts no liability for any loss or damage incurred by that person whatsoever as a result of using the information.

Copyright ©

All rights reserved. No part of the content of this document may be reproduced, published, transmitted or adapted in any form or by any means without the written permission of the Ignis Labs Pty Ltd.



1 NORTH ELEVATION / SECTION
15B2 1:200



2 SOUTH ELEVATION
15B2 1:200

LEGEND:

- TERRACOTTA**
INSTALLED BY BRIGHTON
- ALUM SOLID CLADDING**
INSTALLED BY BRIGHTON
- REINFORCED CONCRETE CLADDING (FIBRE C)**
INSTALLED BY BRIGHTON
- ALUM. METAL LOUVRES**
INSTALLED BY CVS

GLAZING LEGEND:

- GLZ1 STANDARD CLEAR SINGLE GLAZED IGUs
- GLZ2 CLEAR SINGLE GLAZED IGUs WITH JOCKEY SASH & INTEGRAL BLINDS
- GLZ3 TRANSLUCENT SINGLE GLAZED IGUs
- GLZ4 WHITE OPAQUE COLOURBACK SINGLE GLAZING BACKED WITH INSULATION
- GLZ5 GREEN OPAQUE COLOURBACK SINGLE GLAZING BACKED WITH INSULATION
- GLZ6 CLEAR SINGLE GLAZING
- GLZ7 STANDARD CLEAR DOUBLE GLAZED IGUs
- GLZ8 BRONZE OPAQUE COLOURBACK SINGLE GLAZING BACKED WITH INSULATION
- GLZ9 ASSAULT GUARD CLEAR GLAZING

DIMENSION LEGEND:

X X DIMENSION SET OUT FOR METAL SHEET CLADDING (COLOURBACK) - FAC10

X X DIMENSION SET OUT FOR WINDOW AND LOUVRES

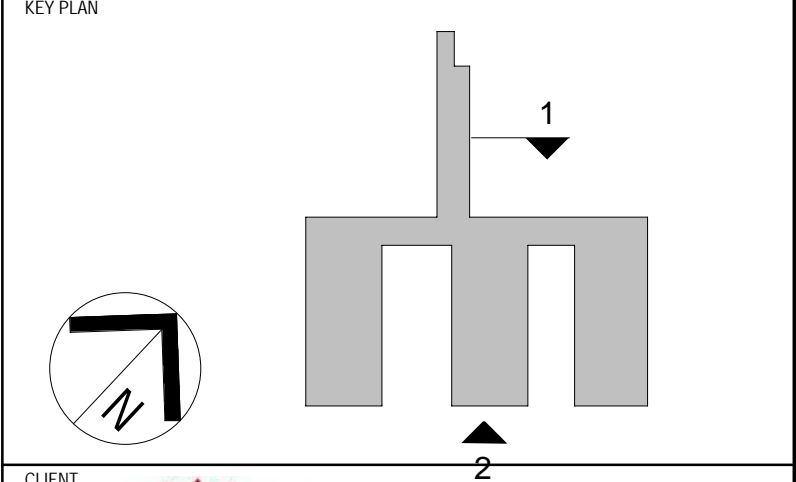
X X DIMENSION SET OUT FOR TERRACOTTA CLADDING - FAC1

X X DIMENSION SET OUT FOR ALUMINIUM NON-COMPOSITE CLADDING - FAC3

X X REINFORCED CONCRETE CLADDING (FIBRE C) - FAC2

X X NOTE 1 - REFER TO CURVED FACADE SETOUT PLAN DETAILS FOR FACADE AND WINDOWS SERIES 7600

REV	DATE	DESIGN	REV'D	APP'D	AMENDMENT
Q	08.06.21	SC	WB		GENERAL UPDATE
P	26.02.20	SC	WB		FACADE UPDATE
O	10.12.20	SC	WB		ROUND LOUVRES UPDATE
N	07.08.20	LH	WB		SOUTH ELEVATION UPDATE
M	27.07.20	MW	WB		SECTION 4.55 MODIFICATION 5 ISSUE
L	25.05.20	LH	WB		ELEVATION UPDATE
K	20.05.20	LH	WB		SECURE COURTYARD UPDATE
J	23.04.20	LH	WB		GENERAL ELEVATION UPDATE
I	24.03.20	LH	WB		EAST ATRIUM SMOKE FAN & GENERAL UPDATE
H	20.02.20	LH	WB		SECTION 4.55 MODIFICATION ISSUE
G	14.02.20	LH	WB		ISSUED FOR CCA
F	03.02.20	LH	WB		SECTION 4.55 MODIFICATION ISSUE



CLIENT

JOHNSTAFF

roberts pizzarotti

JACOBS

LEVEL 7, 177 PACIFIC HIGHWAY
NORTH SYDNEY
NSW 2060
AUSTRALIA

TEL: +61 2 9628 2100
FAX: +61 2 9628 2110
WEB: jacobs.com

PROJECT

CONCORD HOSPITAL REDEVELOPMENT STAGE 1

HOSPITAL ROAD
CONCORD NSW 2139

TITLE

ELEVATION - NORTH & SOUTH

FOR CONSTRUCTION

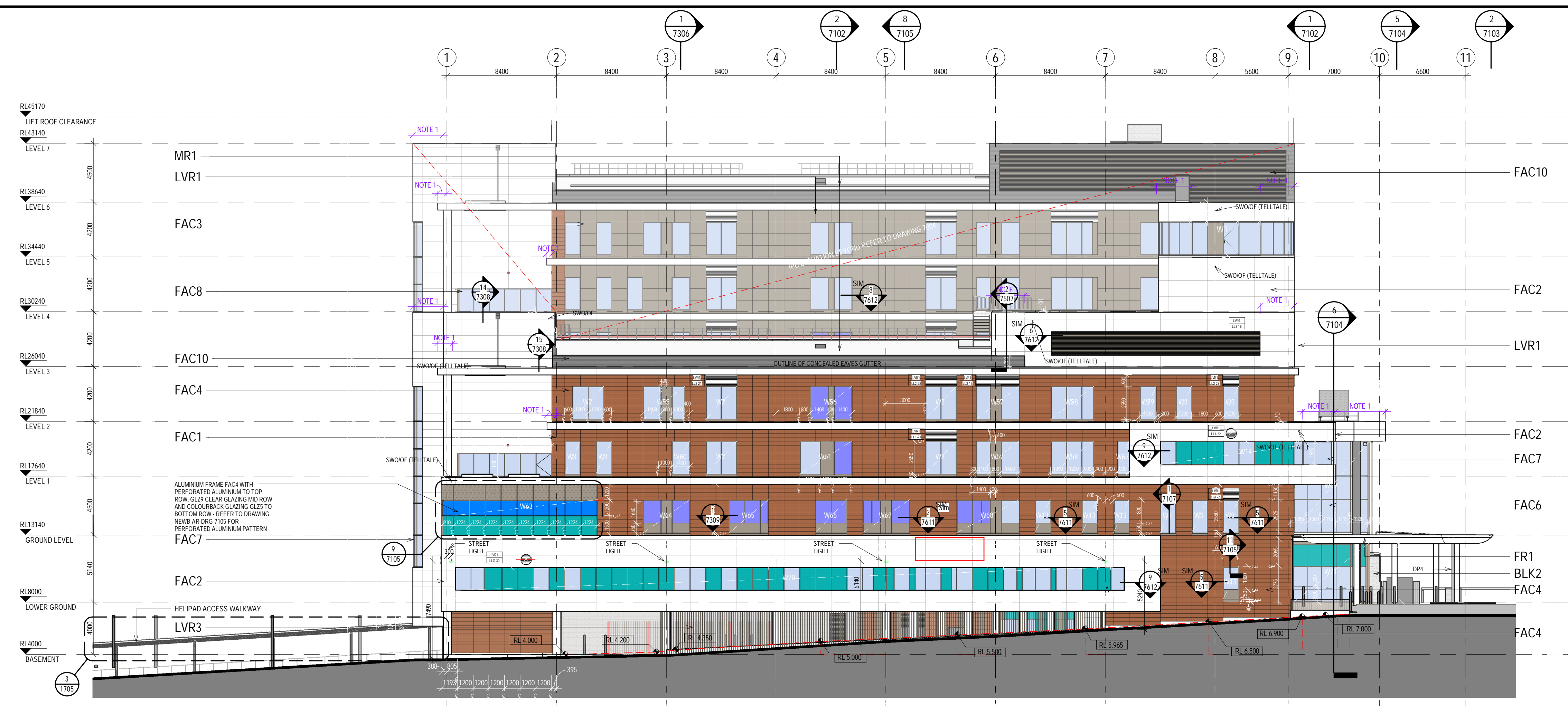
DRAWN	MM/BY	DRAWING CHECK	PC/WB
DESIGNED	AC/DG	DESIGN REVIEW	CY
REVIEWED		DATE	
APPROVED		DATE	

SCALE

1:200 @ B1

PROJECT No. DRAWING No. REV

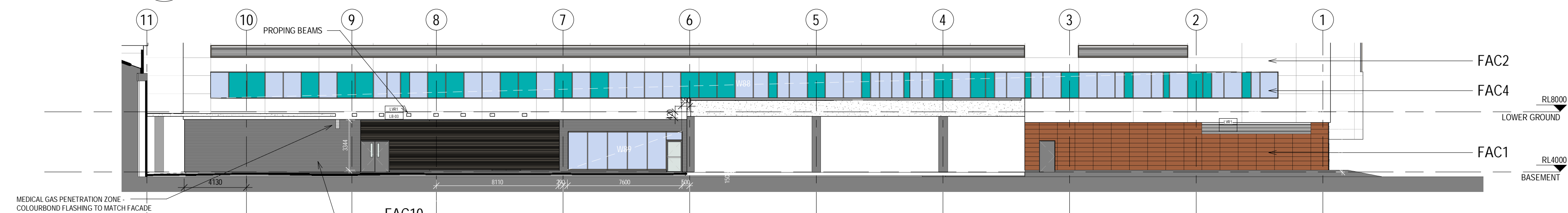
IA064700 NEWB-AR-DRG-7001 Q



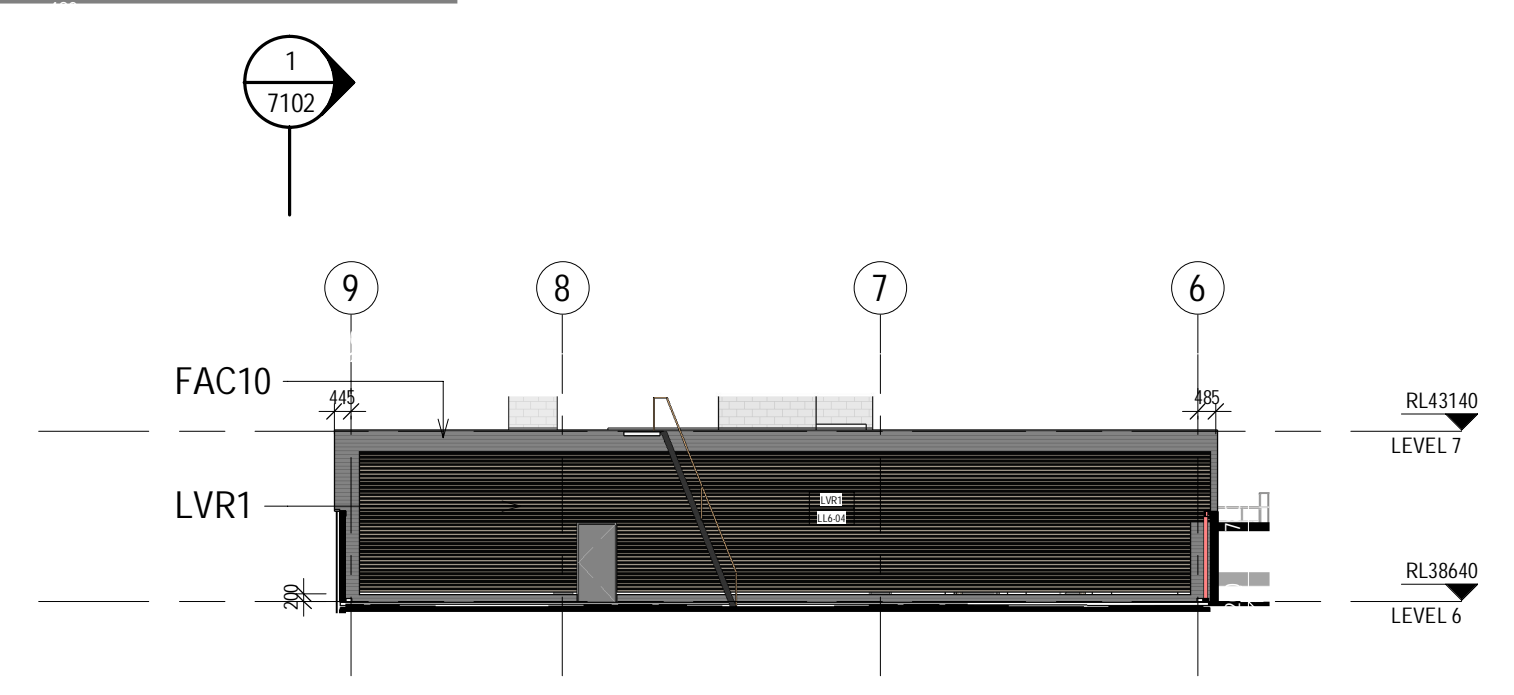
1 EAST ELEVATION
15B2 1:200



2 WEST ELEVATION
15B2 1:200



3 PART WEST ELEVATION SECTION
15B2 1:200



4 PART WEST PLANT ROOM ELEVATION SECTION
1562 1:200

LEGEND:

- TERRACOTTA
INSTALLED BY BRIGHTON
- ALUM SOLID CLADDING
INSTALLED BY BRIGHTON
- REINFORCED CONCRETE CLADDING (FIBRE C)
INSTALLED BY BRIGHTON
- ALUM. METAL LOUVRES
INSTALLED BY CVS

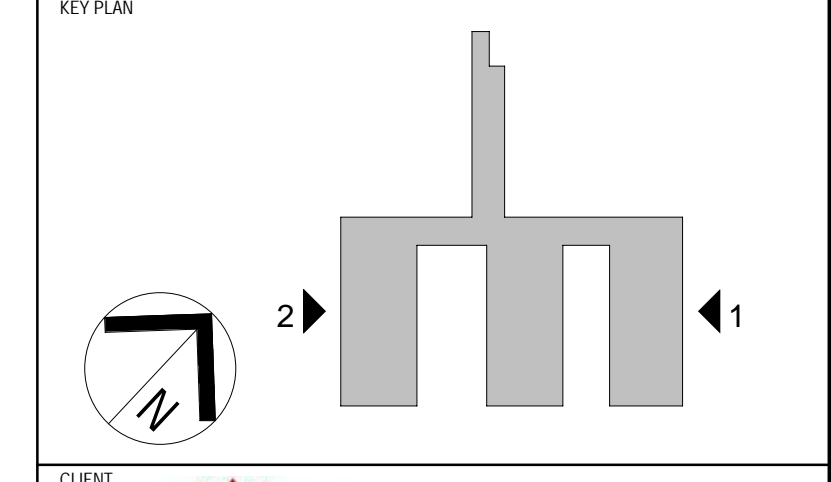
GLAZING LEGEND:

- LVR1 HORIZONTAL LOUVRES
- LVR2 ACTUATED POWER GLASS LOUVRES
- LVR3 VERTICAL LOUVRES
- LVR4 600mm DEEP ACOUSTIC LOUVRES, HORIZONTAL
- GLZ1 STANDARD CLEAR SINGLE GLAZED IGUs
- GLZ2 CLEAR SINGLE GLAZED IGU, WITH JOCKEY SASH & INTEGRAL BLINDS
- GLZ3 TRANSLUCENT SINGLE GLAZED IGUs
- GLZ4 WHITE OPAQUE COLOURBACK SINGLE GLAZING BACKED WITH INSULATION
- GLZ5 GREEN OPAQUE COLOURBACK SINGLE GLAZING BACKED WITH INSULATION
- GLZ6 CLEAR SINGLE GLAZING
- GLZ7 STANDARD CLEAR DOUBLE GLAZED IGUs
- GLZ8 BRONZE OPAQUE COLOURBACK SINGLE GLAZING BACKED WITH INSULATION
- GLZ9 ASSAULT GUARD CLEAR GLAZING

DIMENSION LEGEND:

- DIMENSION SET OUT FOR METAL SHEET CLADDING (COLOURBACK) - FAC10
- DIMENSION SET OUT FOR WINDOW AND LOUVRES
- DIMENSION SET OUT FOR TERRACOTTA CLADDING - FAC1
- DIMENSION SET OUT FOR ALUMINIUM NON-COMPOSITE CLADDING - FAC3
- REINFORCED CONCRETE CLADDING (FIBRE C) - FAC2
- NOTE 1 - REFER TO CURVED FACADE SETOUT PLAN DETAILS FOR FACADE AND WINDOWS SERIES 7600

REV	DATE	BY	CHKD	APPD	AMENDMENT
M	26.02.20	SC	WB		FACADE UPDATE
LT	11.09.20	LH	WB		GENERAL UPDATE
L	31.07.20	MW	WB		GENERAL UPDATE
K	27.07.20	MW	WB		SECTION 4.55 MODIFICATION 5 ISSUE
J	01.06.20	LH	WB		ELEVATION UPDATE
I	25.05.20	LH	WB		ELEVATION UPDATE
H	20.05.20	LH	WB		SECURE COURTYARD UPDATE
G	23.04.20	LH	WB		GENERAL ELEVATION UPDATE
F	13.03.20	LH	WB		SECTION 4.55 MODIFICATION ISSUE
E	14.02.20	LH	WB		ISSUED FOR GC4A
D	03.02.20	LH	WB		SECTION 4.55 MODIFICATION ISSUE
C	04.12.19	BA	WB		UPDATES TO FACADE - EAST ELEVATION BANDING DETAIL UPDATE & COLOURBACK GLASS REVISED
B	08.11.19	BA	WB		GENERAL UPDATES



CLIENT

JOHNSTAFF

roberts pizzarotti

JACOBS

LEVEL 7, 177 FRANCIS HIGHWAY
NORTH SYDNEY
NSW 2060
AUSTRALIA

TEL: +61 2 9628 2100
FAX: +61 2 9628 2010
WEB: jacobson.com

PROJECT

CONCORD HOSPITAL
REDEVELOPMENT STAGE 1

HOSPITAL ROAD
CONCORD NSW 2139

TITLE

ELEVATION - EAST & WEST

DRAWING STATUS

FOR CONSTRUCTION

DRAWN: MM/BJ
DESIGNED: AC/DG
REVIEWED: []
APPROVED: []

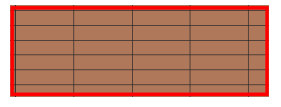
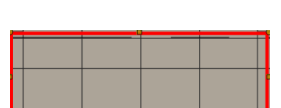


DRAWING CHECK: PC/WB
DESIGN REVIEW: CY
DATE: []

SCALE: 1:200 @ B1

PROJECT No: IA064700
DRAWING No: NEWB-AR-DRG-7002
REV: N



LEGEND:

-  **TERRACOTTA**
INSTALLED BY BRIGHTON
-  **ALUM SOLID CLADDING**
INSTALLED BY BRIGHTON
-  **REINFORCED CONCRETE CLADDING (FIBRE C)**
INSTALLED BY BRIGHTON
-  **ALUM. METAL LOUVRES**
INSTALLED BY CVS

- FR1 FLAT ROOF, MEMBRANE WITH SELECT PAVERS/BALLAST
 MR1 METAL ROOF SHEETING WITH 100mm INSULATION ROOF RAISERS
 LVR1 HORIZONTAL LOUVRES
 LVR2 ACTUATED POWER GLASS LOUVRES
 LVR3 VERTICAL LOUVRES
 LVR4 400mm DEEP ACOUSTIC LOUVRES, HORIZONTAL
- GLAZING LEGEND:**
- GL21 STANDARD CLEAR SINGLE GLAZED IGUS
 - GL22 CLEAR SINGLE GLAZED IGUS, WITH JOCKEY SASH & INTEGRAL BLINDS
 - GL23 TRANSLUCENT SINGLE-GLAZED IGUS
 - GL24 WHITE OPAQUE COLOURBACK SINGLE GLAZING BACKED WITH INSULATION
 - GL25 GREEN OPAQUE COLOURBACK SINGLE GLAZING BACKED WITH INSULATION
 - GL26 CLEAR SINGLE GLAZING
 - GL27 STANDARD CLEAR DOUBLE GLAZED IGUS
 - GL28 BRONZE OPAQUE COLOURBACK SINGLE GLAZING BACKED WITH INSULATION
 - GL29 ASSAULT GUARD CLEAR GLAZING

DIMENSION LEGEND:

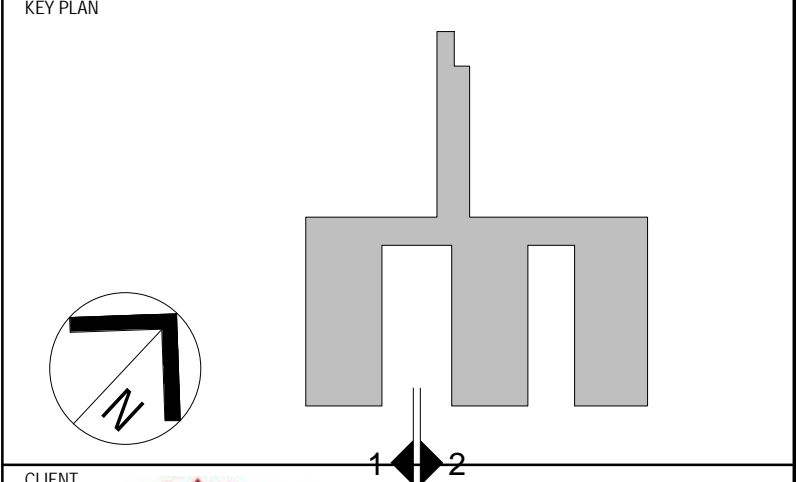
X → DIMENSION SET OUT FOR METAL SHEET CLADDING (COLORBOND) - FAC10
 → DIMENSION SET OUT FOR WINDOW AND LOUVRES
 DIMENSION SET OUT FOR TERRACOTTA CLADDING - FAC1
 DIMENSION SET OUT FOR ALUMINIUM NON-COMPOSITE CLADDING - FAC3
 REINFORCED CONCRETE CLADDING (FIBRE C) - FAC2
 NOTE 1 - REFER TO CURVED FACADE SETOUT PLAN DETAILS FOR FACADE AND WINDOWS SERIES 7600

REV	DATE	DRAWN	REV'D	APP'D	AMENDMENT
J	13.07.20	MW	WB		GENERAL UPDATE
I	30.06.20	MW	SC		GENERAL UPDATE
H	05.05.20	LH	WB		ELEVATION UPDATE
G	23.04.20	LH	WB		GENERAL ELEVATION UPDATE
F	20.02.20	LH	WB		SECTION 4.55 MODIFICATION ISSUE ISSUED FOR CCAK
E	14.02.20	LH	WB		ISSUED FOR CCAK
D	03.02.20	LH	WB		SECTION 4.55 MODIFICATION ISSUE
C	04.12.19	BA	WB		UPDATES TO FACADE - EAST ELEVATION SHADING DETAIL UPDATE & COLORBACK GLASS REVISED
B	08.11.19	BA	WB		GENERAL UPDATES
A	27.09.19	BA	WB		ISSUE FOR CONSTRUCTION
Z1	03.09.19	BA	WB		ELEVATIONS & DETAILS UPDATE - LOUVRES, WINDOW TAGS ADDED & GENERAL UPDATES

1 IPU 1 - EAST ELEVATION
1:200



2 IPU 2 - WEST ELEVATION
1:200



LEVEL 7, 177 PACIFIC HIGHWAY
 NORTH SYDNEY
 NSW 2060
 AUSTRALIA

TEL: +61 2 9628 2100
 FAX: +61 2 9628 2010
 WEB: jacobs.com

PROJECT
CONCORD HOSPITAL REDEVELOPMENT STAGE 1
 HOSPITAL ROAD
 CONCORD NSW 2139

TITLE
ELEVATION - IPU 1 EAST & IPU 2 WEST

FOR CERTIFICATION

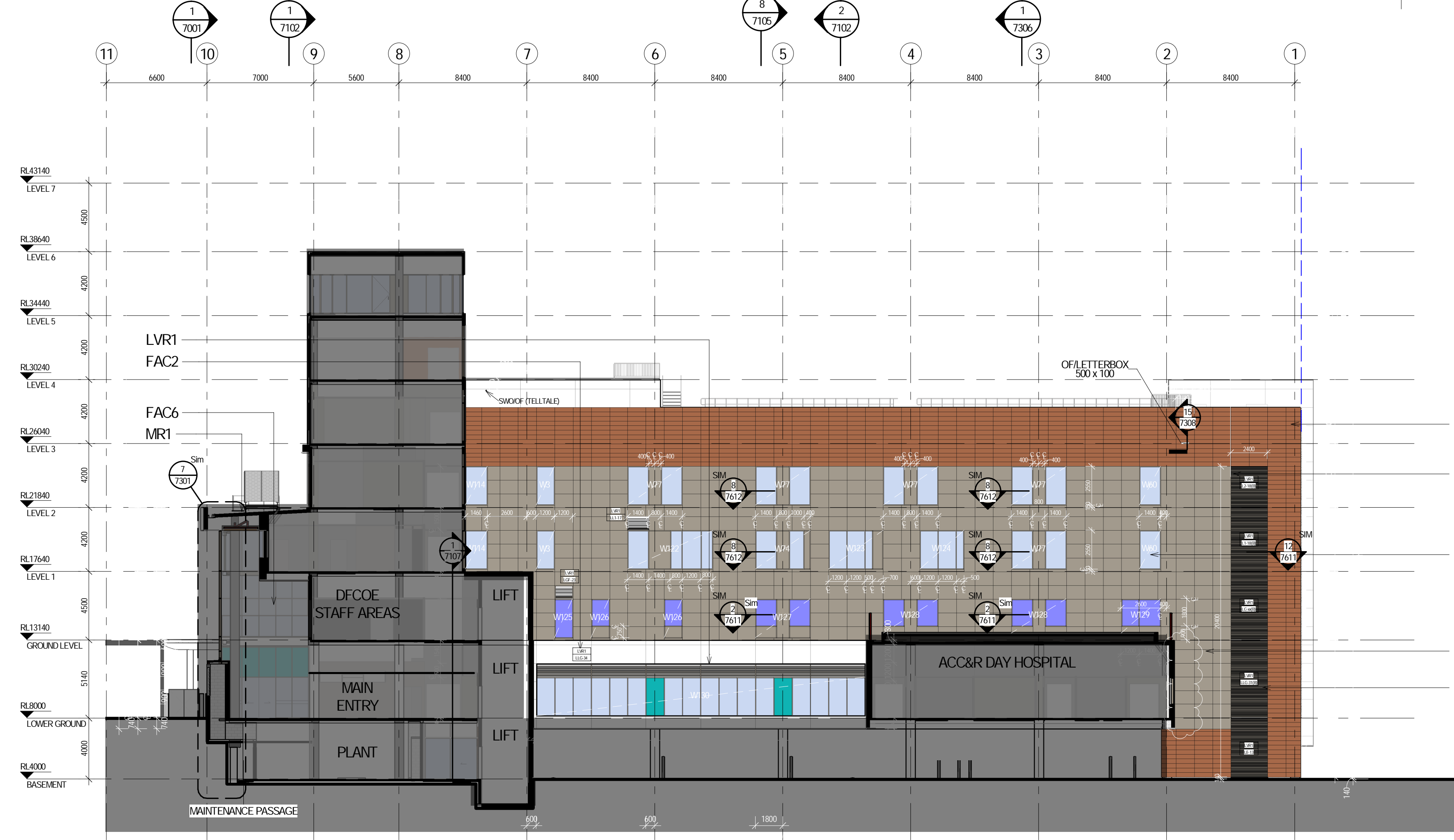
DRAWN	DRAWING CHECK
MW/BY	PC/WB
DESIGNED	DESIGN REVIEW
AC/DG	CY
REVIEWED	DATE
APPROVED	DATE

SCALE
1:200 @ B1

PROJECT NO.	DRAWING NO.	REV
IA064700	NEWB-AR-DRG-7003	J



1 IPU2 - EAST ELEVATION
1:200



2 IPU3 - WEST ELEVATION
1:200



3 IPU3 - NORTH ELEVATION
1:200

LEGEND:

- TERRACOTTA**
INSTALLED BY BRIGHTON
- ALUM SOLID CLADDING**
INSTALLED BY BRIGHTON
- REINFORCED CONCRETE CLADDING (FIBRE C)**
INSTALLED BY BRIGHTON
- ALUM. METAL LOUVRES**
INSTALLED BY CVS

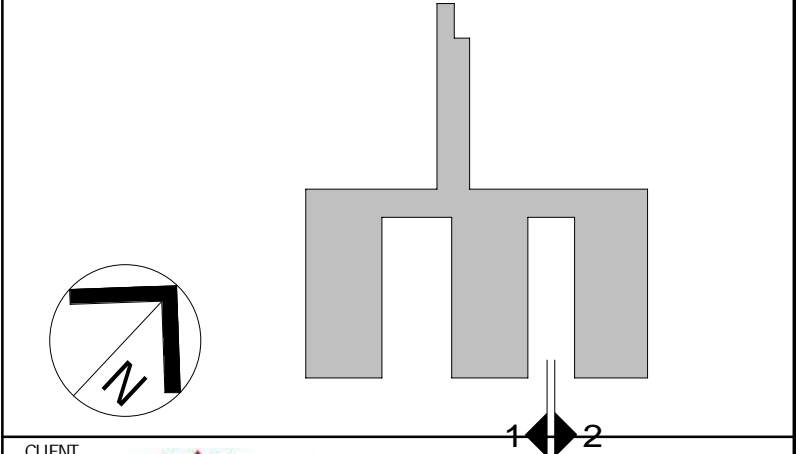
- FR1 FLAT ROOF, MEMBRANE WITH SELECT PAVERS/BALLAST
 - MR1 METAL ROOF SHEETING WITH 100mm INSULATION ROOF PAVERS
 - LVR1 HORIZONTAL LOUVRES
 - LVR2 ACTUATED POWER GLASS LOUVRES
 - LVR3 VERTICAL LOUVRES
 - LVR4 600mm DEEP ACOUSTIC LOUVRES, HORIZONTAL
- GLAZING LEGEND:**
- GLZ1 STANDARD CLEAR SINGLE GLAZED IGUs
 - GLZ2 CLEAR SINGLE GLAZED IGUs, WITH JOCKEY SASH & INTEGRAL BLINDS
 - GLZ3 TRANSLUCENT SINGLE-GLAZED IGUs
 - GLZ4 WHITE OPAQUE COLOURBACK SINGLE GLAZING BACKED WITH INSULATION
 - GLZ5 GREEN OPAQUE COLOURBACK SINGLE GLAZING BACKED WITH INSULATION
 - GLZ6 CLEAR SINGLE GLAZING
 - GLZ7 STANDARD CLEAR DOUBLE GLAZED IGUs
 - GLZ8 BRONZE OPAQUE COLOURBACK SINGLE GLAZING BACKED WITH INSULATION
 - GLZ9 ASSAULT GUARD CLEAR GLAZING

DIMENSION LEGEND:

- DIMENSION SET OUT FOR METAL SHEET CLADDING (COLOURBACK) - FAC1
- DIMENSION SET OUT FOR WINDOW AND LOUVRES
- DIMENSION SET OUT FOR TERRACOTTA CLADDING - FAC1
- DIMENSION SET OUT FOR ALUMINIUM NON-COMPOSITE CLADDING - FAC3
- REINFORCED CONCRETE CLADDING (FIBRE C) - FAC2
- DIMENSION SET OUT FOR FACADE SETOUT PLAN DETAILS FOR FACADE AND WINDOWS SERIES 7000

NOTE 1 - REFER TO CURVED FACADE SETOUT PLAN DETAILS FOR FACADE AND WINDOWS SERIES 7000

REV	DATE	DRAWN	REV'D	APP'D	AMENDMENT
G	21.08.20	MM	WB		GENERAL UPDATE
F	23.04.20	LH	WB		GENERAL ELEVATION UPDATE
E	14.02.20	LH	WB		ISSUED FOR C&A
D	20.12.19	BA	WB		FACADE UPDATES - COLOURBACK TO AIR LOBBY, UPDATES TO NCVH AND FACADE PLAN DETAIL UPDATES (WINDOW REPOSITIONED)
C	04.12.19	BA	WB		UPDATES TO FACADE - EAST ELEVATION SHADING DETAIL UPDATE & COLOURBACK GLASS REVISED
B	08.11.19	BA	WB		GENERAL UPDATES
A	27.09.19	BA	WB		ISSUE FOR CONSTRUCTION
Z0	03.09.19	BA	WB		ELEVATIONS & DETAILS UPDATE - LOUVRES, WINDOW TAGS ADDED & GENERAL UPDATES



CLIENT

LEVEL 1, 177 FINCH HIGHWAY
NORTH SYDNEY
NSW 2060
AUSTRALIA

TEL: +61 2 9628 2100
FAX: +61 2 9628 2110
WEB: jacobs.com

PROJECT
CONCORD HOSPITAL REDEVELOPMENT STAGE 1

HOSPITAL ROAD
CONCORD NSW 2139

TITLE
ELEVATION - IPU 2 EAST & IPU 3 WEST

FOR CONSTRUCTION

DRAWN	MM/WB	DRAWING CHECK	PC/WB
DESIGNED	AC/DG	DESIGN REVIEW	CY
REVISED		DATE	
APPROVED		DATE	
SCALE	1:200 @ B1		
PROJECT No.	DRAWING No.	REV	
IA064700	NEWB-AR-DRG-7004	G	