

LEGEND

Central 'tree' path to be viewed from above
Equal access path with 1:20 gradient concrete with oxide/ textured finish.

Hard surface area for outdoor tables/ seating area. Concrete with oxide/ texture in contrast to path areas.

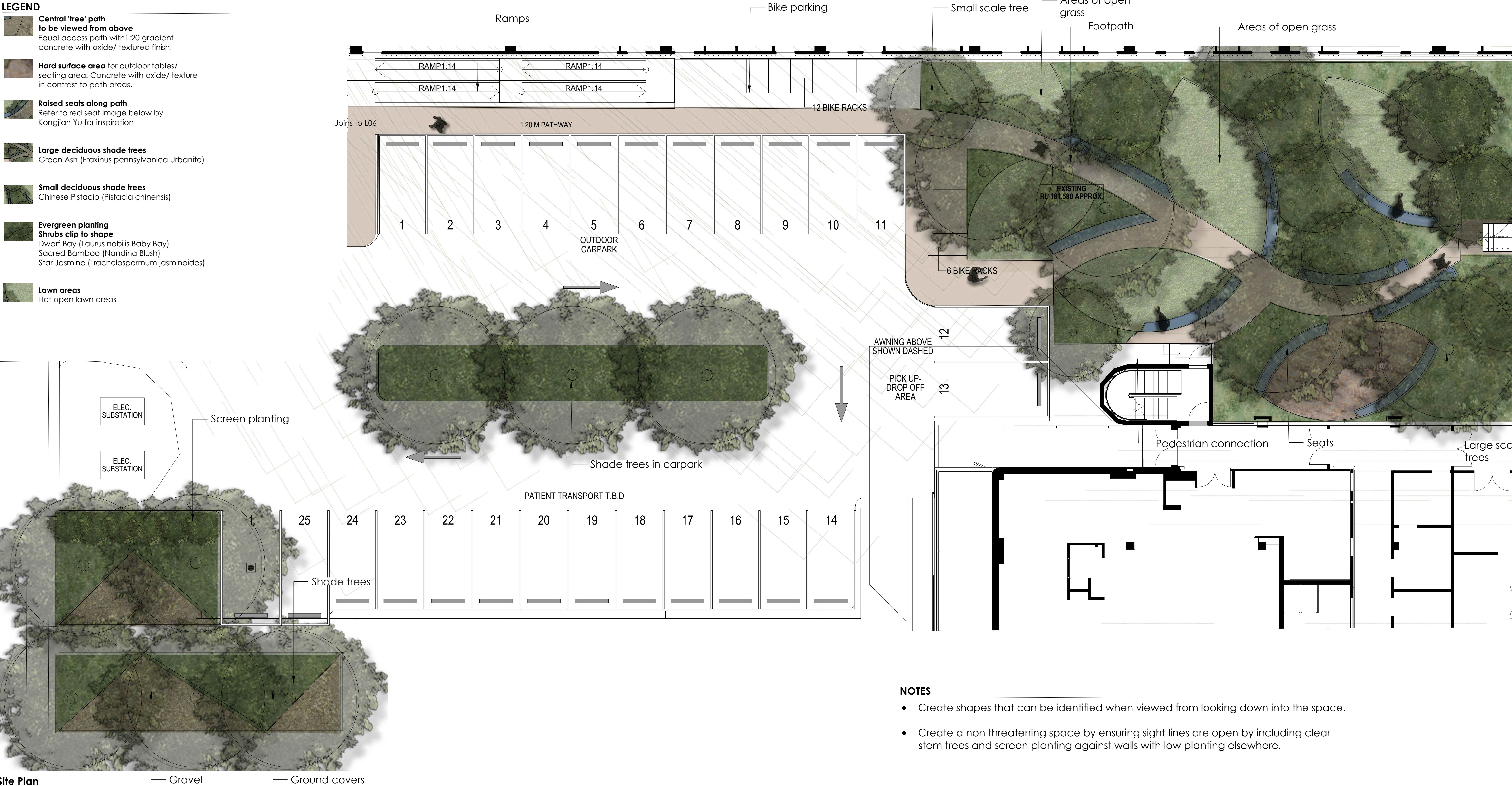
Raised seats along path
Refer to red seat image below by Kongjian Yu for inspiration

Large deciduous shade trees
Green Ash (*Fraxinus pennsylvanica* Urbanite)

Small deciduous shade trees
Chinese Pistacio (*Pistacia chinensis*)

Evergreen planting
Shrubs clip to shape
Dwarf Bay (*Laurus nobilis* Baby Bay)
Sacred Bamboo (*Nandina* Blush)
Star Jasmine (*Trachelospermum jasminoides*)

Lawn areas
Flat open lawn areas



Site Plan
1:100@A1



Chinese Pistacio



Green Ash



Concept image
Ribbon seat by Kongjian Yu



Dwarf Bay tree as green back drop to space

NOTES

- Create shapes that can be identified when viewed from looking down into the space.
- Create a non threatening space by ensuring sight lines are open by including clear stem trees and screen planting against walls with low planting elsewhere.

PLANTING SCHEDULE

Species	Common Name	Mature size	Pot size	Spacing	Nos/ Notes
Fraxinus pennsylvanica Urbanite	Flowering Ash	12 x 8m	500L	As shown	12
Pistacia chinensis	Chinese Pistacio	8m x 6m	500L	As shown	10
Shrubs/ ground covers					
Laurus nobilis Baby Bay	Dwarf Bay Tree	2mx 2m	200mm	1m	Against buildings only.
Nandina Blush	Sacred Bamboo	.6m x .6m	200mm	500mm	
Trachelospermum jasminoides	StarJasmine	.3 x 1.5m	140mm	800mm	
Rhagodia spinescens	Ground cover saltbush	.3 x .8m	200mm	800mm	