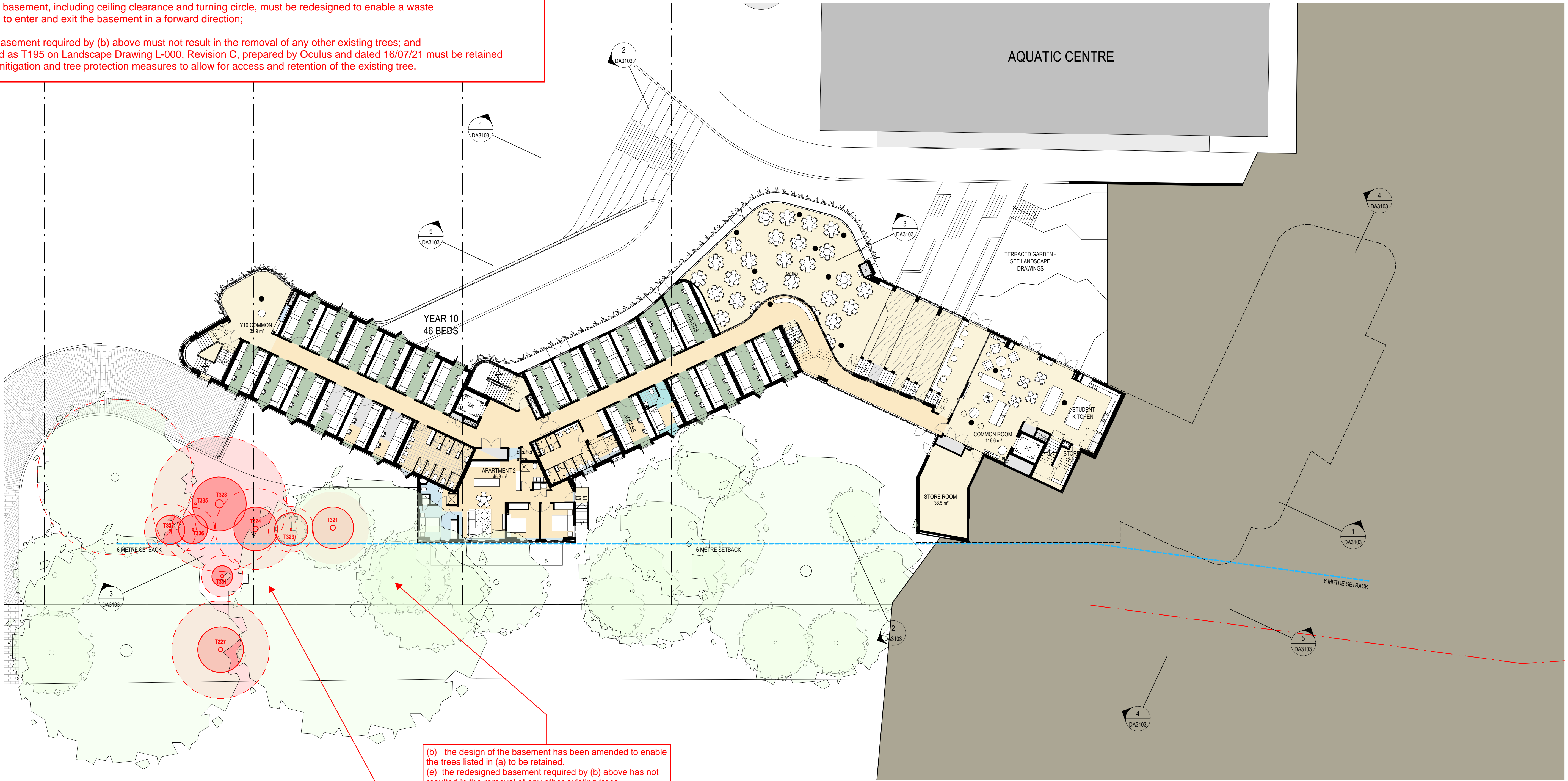


Condition B2

Prior to the issue of any construction certificate for Stage 1, the approved architectural and landscape plans listed in Schedule 3 condition A2 relating to the boarding accommodation building must be amended to incorporate the following changes to the design of the boarding accommodation building to the satisfaction of the Planning Secretary:

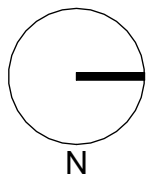
- (a) the at-grade waste collection area including associated hard stand areas and separate driveway must be deleted and the existing trees in this location (Tree Nos. 227, 321, 323, 324, 328, 331, 335, 336 and 337 as identified on the landscape plans must be retained;
- (b) the design of the basement must be amended to enable the trees listed in (a) above to be retained;
- (c) the waste collection area must be relocated to the basement;
- (d) the design of the basement, including ceiling clearance and turning circle, must be redesigned to enable a waste collection vehicle to enter and exit the basement in a forward direction;
- (e) the redesigned basement required by (b) above must not result in the removal of any other existing trees; and the tree identified as T195 on Landscape Drawing L-000, Revision C, prepared by Oculus and dated 16/07/21 must be retained through design mitigation and tree protection measures to allow for access and retention of the existing tree.



- (b) the design of the basement has been amended to enable the trees listed in (a) to be retained.
(e) the redesigned basement required by (b) above has not resulted in the removal of any other existing trees

- (a) the at-grade waste collection area including associated hard stand areas and separate driveway have been deleted and the existing trees in this location - 227, 321, 323, 324, 328, 331, 335, 336 and 337 as identified on the landscape plans have been retained, indicated here with their respective tree protection zones and structural root zones.

Revisions No.	Date	Description	Ver	App'd
P1	12/02/2020	Issue to consultants		
P2	20/11/2020	DRAFT RTS		
A	09/12/2020	SSD RESUBMISSION		
B	07/07/2022	SSD RESUBMISSION - CONDITIONS OF CONSENT		



AJ+C
ALLEN JACK+COTTIER

79 Myrtle Street Chippendale NSW 2008 AUSTRALIA
ph +61 2 9311 8222 fx +61 2 9311 8200
ABN 53 003 782 250

Project
LORETO NORMANHURST
BOARDING HOUSE
91-93 PENNANT HILLS ROAD
NORMANHURST. NSW 2076

Proj. No. 18009

Drawing Title
LEVEL 2 PLAN

Sheet Status
NOT FOR CONSTRUCTION

Scale
1 : 200 @A1

Drawing No.
DA2002 B

Issue

