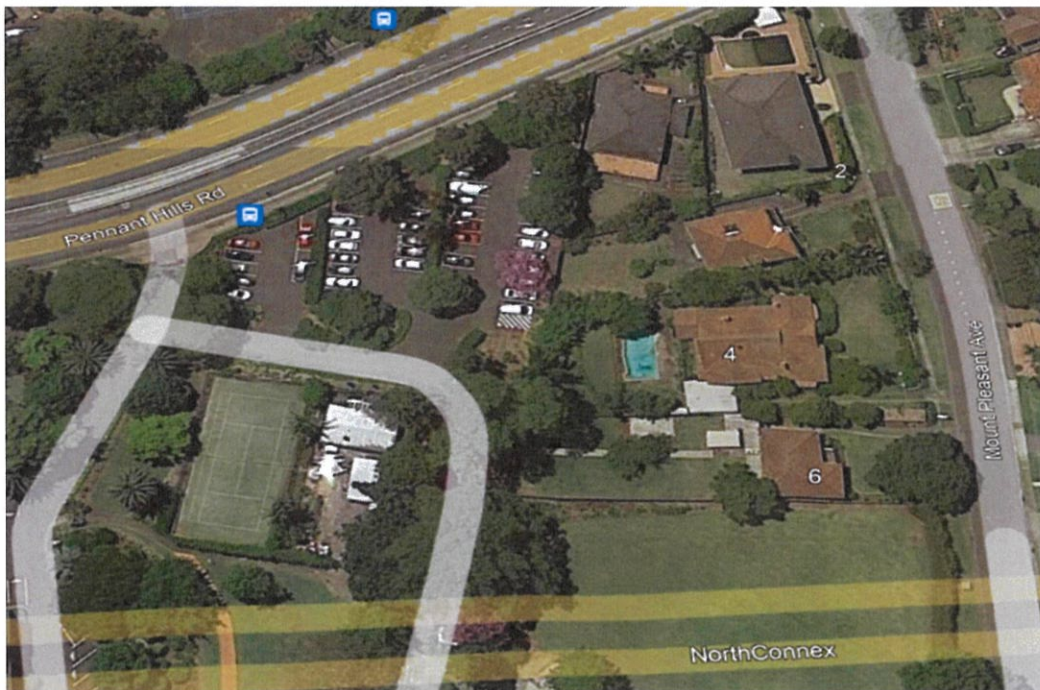




Demolition Plan

In accordance with AS2601 – 2001

Loreto Normanhurst



Builder: Cowyn Building Pty Ltd

Completed for
RH Demolition Pty Ltd
2 Clements Avenue, Bankstown NSW 2200
Phone: (02) 9790 6067
Fax: (02) 9790 6061
A.B.N 41 374 974 567



Introduction

The following Demolition Plan has been developed in line with Appendix B of the SafeWork NSW Demolition Work Code of Practice, March 2015 for Rhino Demolition Pty Ltd.

Location of Site

The site is located at Pennant Hills Rd Normanhurst

Overall Height of the structure

The dwellings to be demolished are one storey premises.

The type of building, structural support system and principle materials of construction

The buildings are constructed out of metal sheeting.
The tennis court is synthetic grass

Demolition Scope of Works

The scope of works is listed below;
We have allowed to remove trees
We have allowed to remove vegetation
We have allowed to remove fences
We have allowed to remove tennis court
We have allowed to remove 50mm of topping
We have allowed to remove concrete capping /kerb
We have allowed to remove pavers
We have allowed to remove bitumen /slab
We have allowed to remove carport
We have allowed to remove and excavate 100mm of top soil for temporary drive way
We have allowed to supply and lay 40-70 rock
We have allowed to create temporary road
We have allowed to remove two sheds / garages
We have allowed to remove gates



Proposed methods for handling and disposing of demolished materials in particular hazardous materials

Licensed demolition specialists will manage the site at all times. The following signage will be put in place "Danger demolition works in progress. Do Not Enter."

Waste is to be stored in skip bins and removed regularly.

Timber, metal, concrete and bricks will be recycled at local facilities. Dust will be controlled with wet techniques.

Any asbestos will be removed prior to commencement of demolition works in accordance with Work Health and Safety Regulations 2011.

Methods for controlling, maintaining access and egress to the workplace

Vehicle access will not be affected. There will be minimal impact on traffic in the street as load out times will be 1030am to 2pm.

There is clear access to the site from the street. The access to the building will be restricted by temporary fencing.

The proposed sequence of carrying out the demolition works and time estimate of stages.

The demolition work will be carried out in line with the Safe Work Method Statements.

The site supervisor will determine the timing for the project as it progresses.

The proposed hoardings, scaffolding and fencing and of any overhead sidewalk protection

Principal contractor to provide.

Traffic Management Arrangements

Access will be from a temporary road from number 6 Mount Pleasant Ave Normanhurst.

Location and condition of services

All services will be located and isolated prior to any demolition works commencing.



Confined spaces

No confined spaces are present on site

Emergency Arrangements

Signage will be displayed on the temporary fencing at the front advising Emergency Contact Numbers. An Emergency Meeting Point will be identified at the Site Induction.

Development Standards

All demolition will be completed in compliance with AS 2601 2001: The demolition of structures and Rhino SWMS and procedures.

Air and Noise

Watering down will be completed with a spray hose where necessary. All work will be completed between the hours of 7am to 5pm and noise will be minimized as much as possible.

Erosion and Sediment Control

Dust will be controlled with water spraying. The footpath will be swept clean wherever necessary. Sand bags will be placed in gutters and surrounding drains as per Sediment Control Plan.

Should any details of this report require further clarification please do not hesitate to contact me on 0404 023 636 to discuss.

Yours sincerely,

Ryan Murphy
Rhino Demolition Pty Ltd
rmurphy@rhinodemolition.com.au
Ph: 0404 023 636
Fax: (02) 9790 6061
Web: www.rhinodemolition.com.au



RH Demolition Pty Ltd
ABN 41 374 974 567
ACN 631 933 410

2 Clements Avenue
Bankstown, NSW 2200

P (02) 9790 6067
www.rhinodemolition.com.au

Demolition License NSW No: 206348 DE2
Demolition License QLD No: 2315123