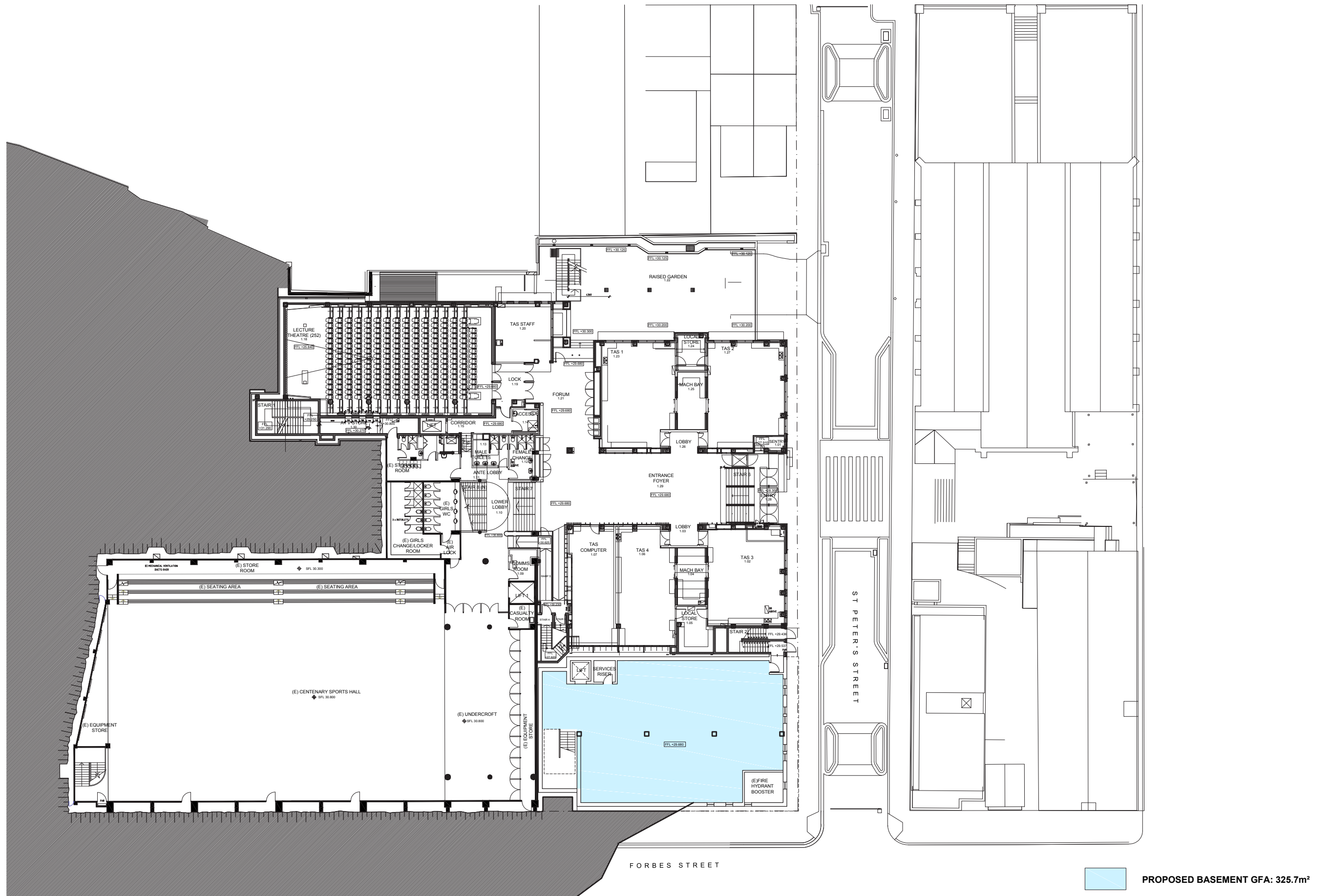
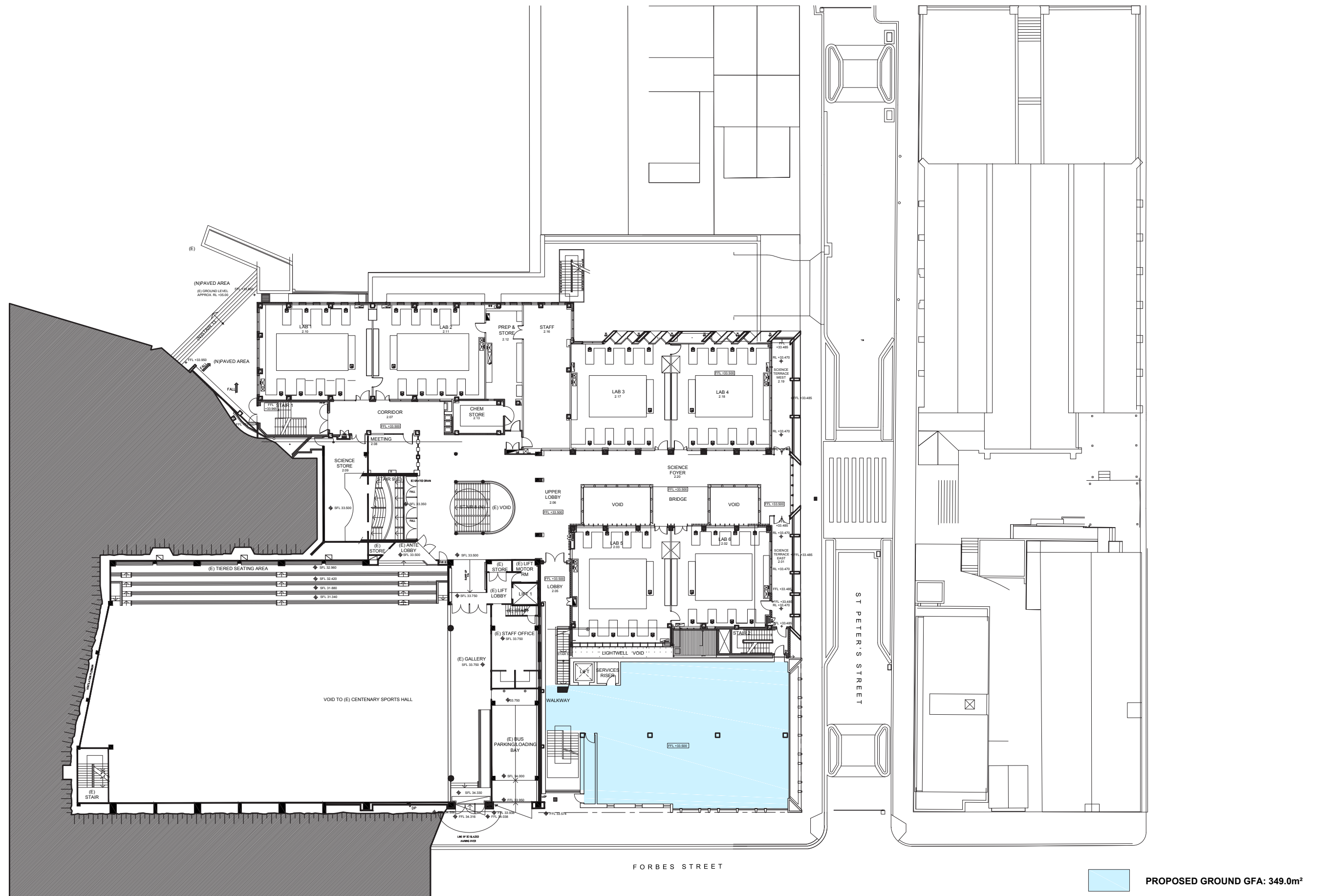


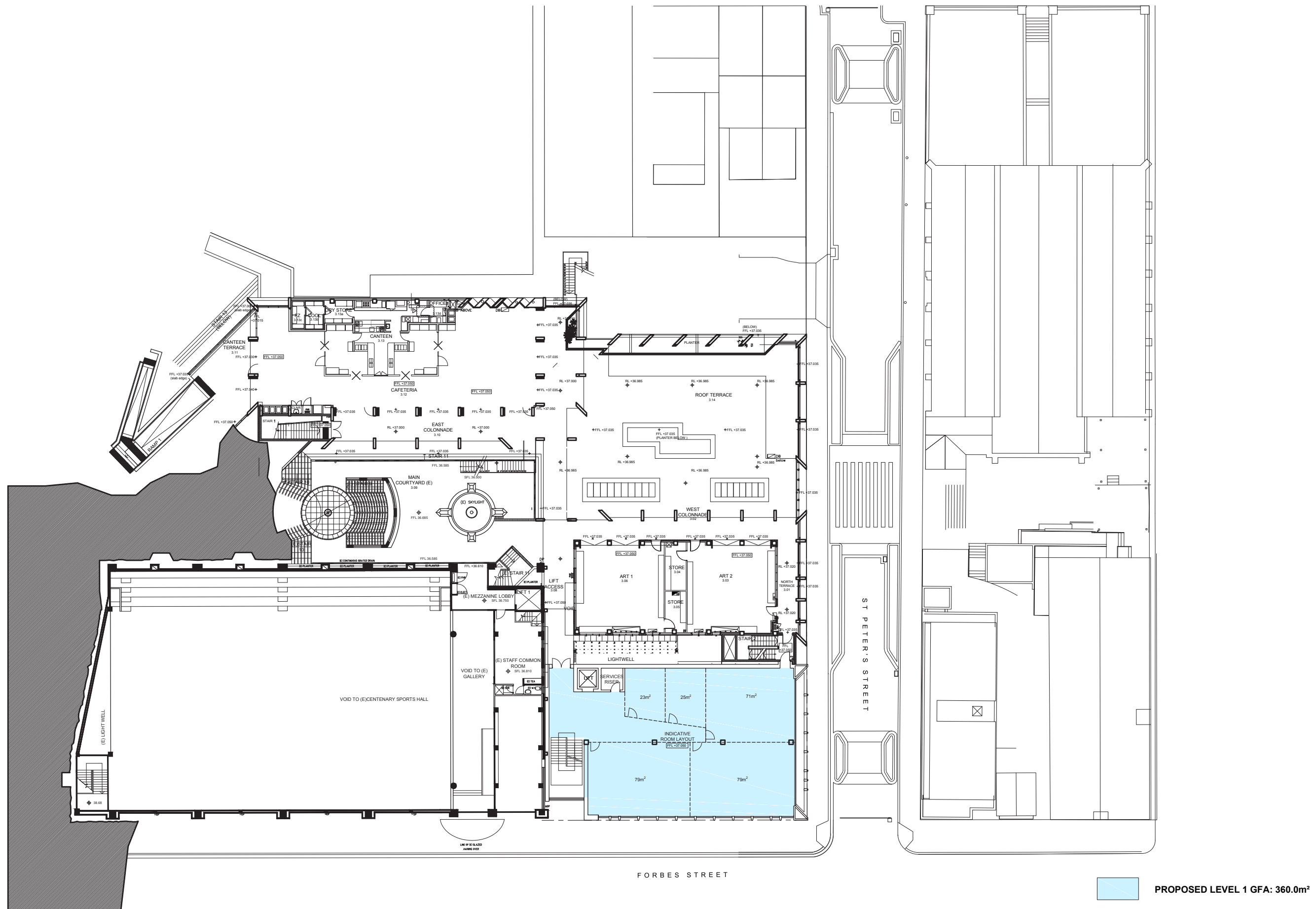
PROPOSED MASTERPLAN | WILKINSON BASEMENT



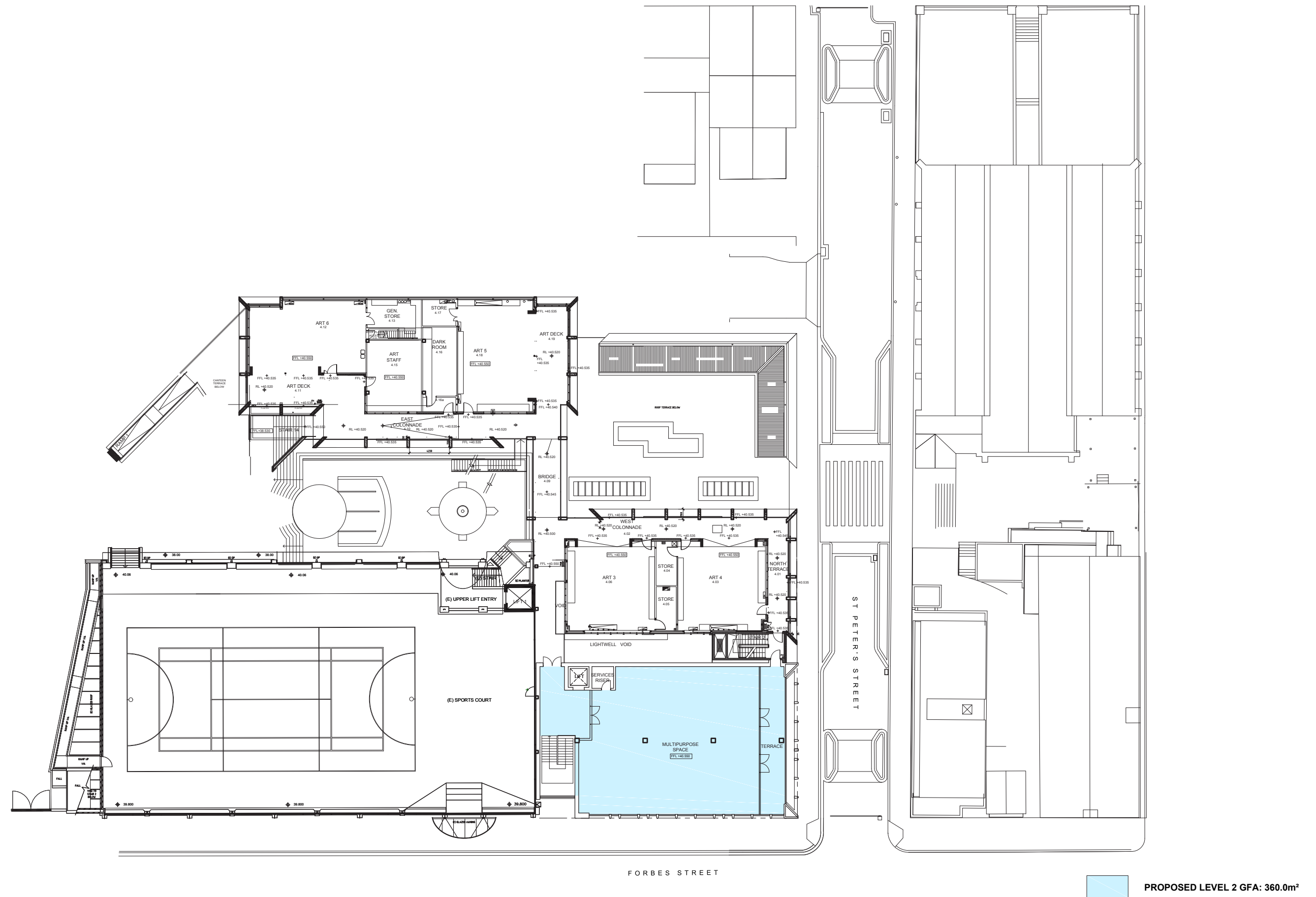
PROPOSED MASTERPLAN | WILKINSON GROUND FLOOR



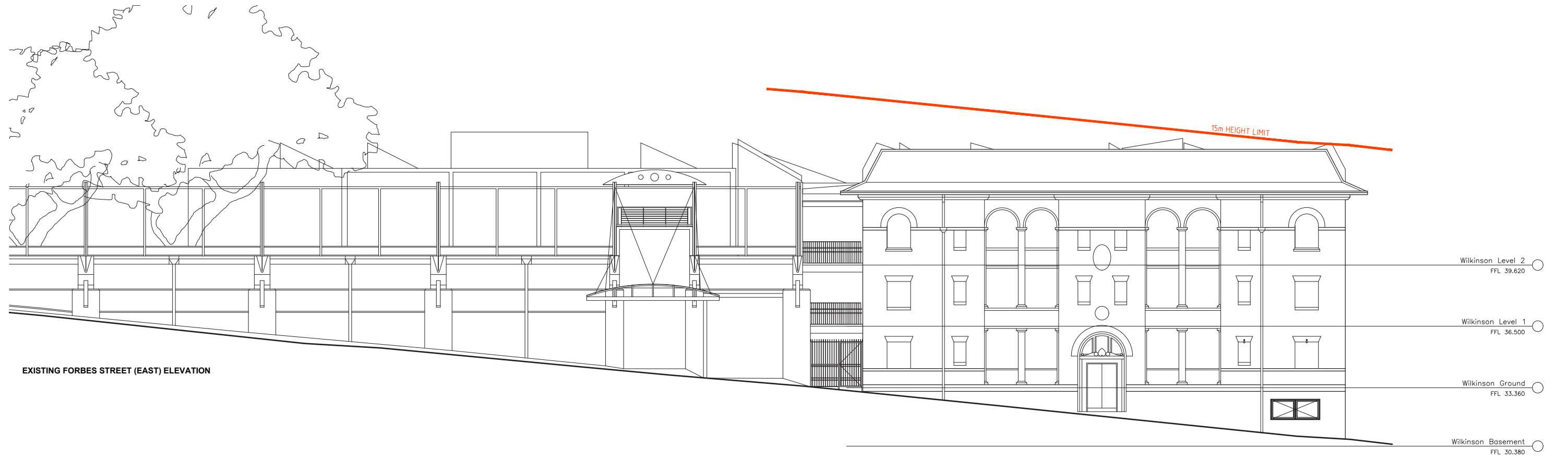
PROPOSED MASTERPLAN | WILKINSON LEVEL 1



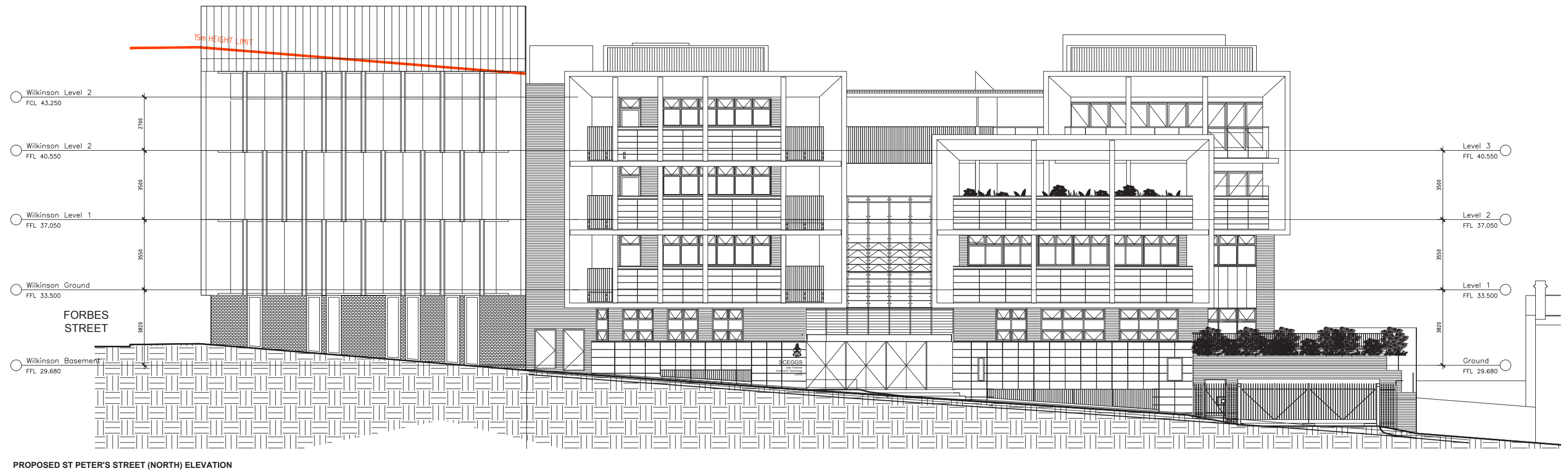
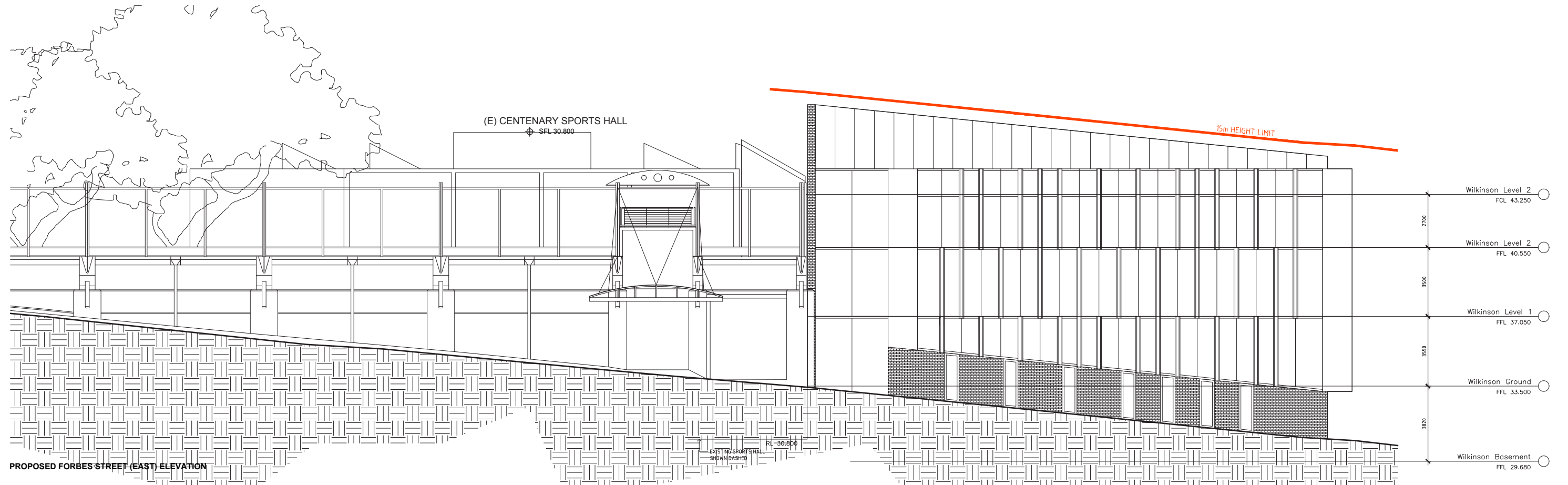
PROPOSED MASTERPLAN | WILKINSON LEVEL 2



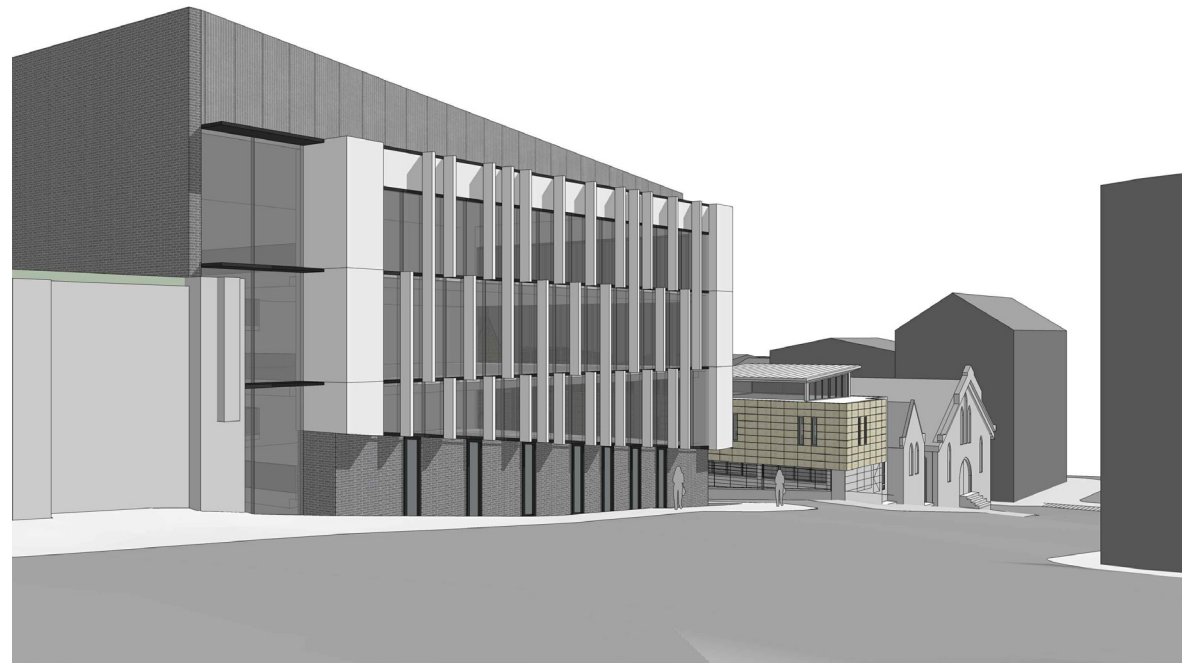
PROPOSED MASTERPLAN | WILKINSON EXISTING ELEVATIONS



PROPOSED MASTERPLAN | WILKINSON ELEVATIONS



PROPOSED MASTERPLAN | WILKINSON 3D VIEWS



FORBES STREET VIEW



FORBES STREET VIEW



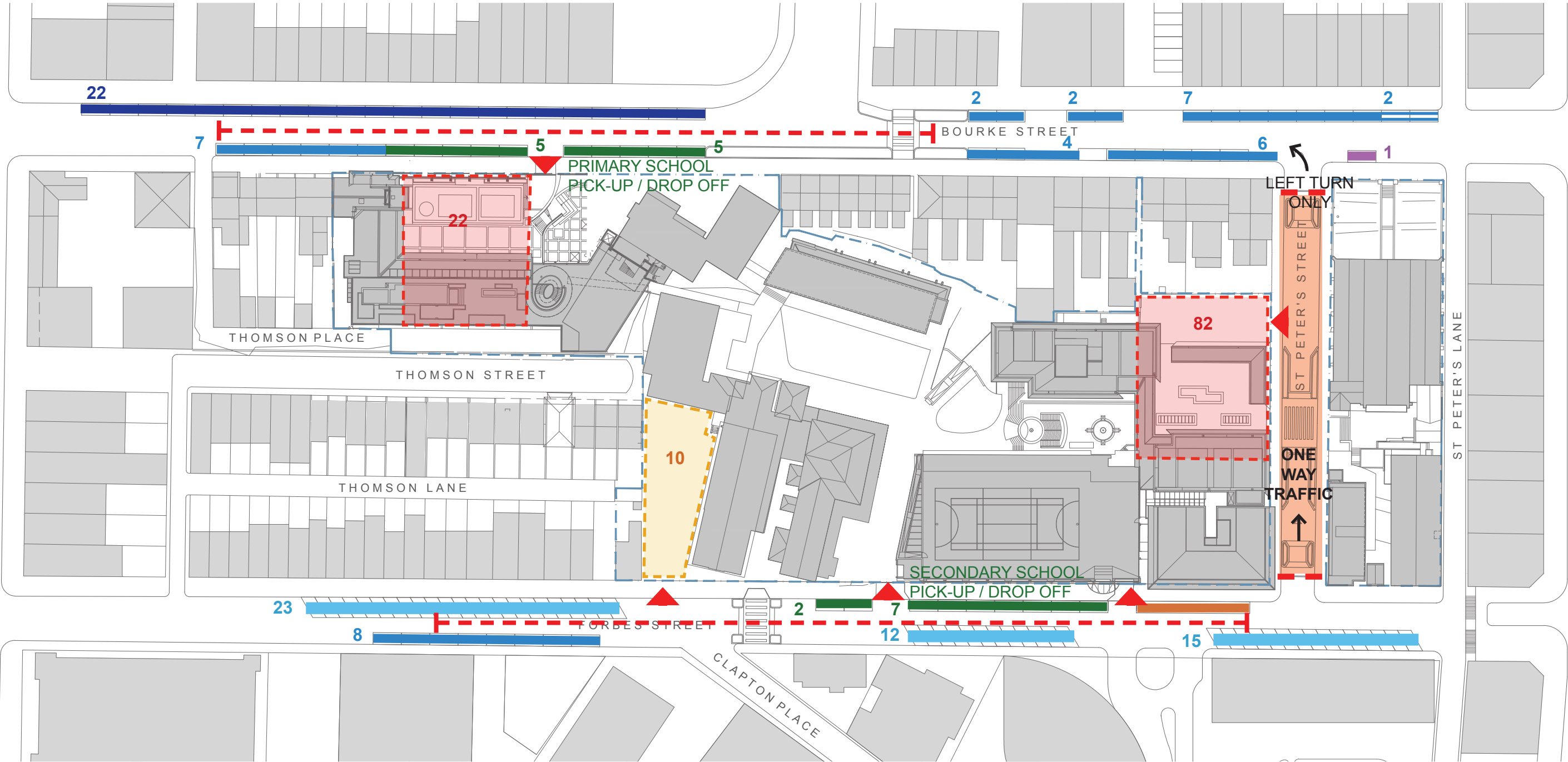
FORBES CROSSING ST PETERS STREET



ST PETERS STREET

Traffic and parking

ANALYSIS | PARKING AND TRAFFIC FLOW



LEGEND

- | | | | | |
|----------------------|------------------------|---------------------|-------------------------|----------------------------------|
| 2HR PARALLEL PARKING | BUS PARKING | AUTHORISED CAR ONLY | SCHOOL ON GRADE CARPARK | SHARED ZONE |
| 1H PARALLEL PARKING | LOADING | 40KM/H SCHOOL ZONE | SCHOOL BASEMENT CARPARK | 15 VEHICLE NUMBERS NOTED ON PLAN |
| 1H 60° ANGLE PARKING | 2HR PICK UP / DROP OFF | ENTRY GATE | VEHICULE ENTRY | |



Operational

- > Additional operational traffic is not expected to be generated
- > There is no proposal to increase student numbers
- > In response to neighbouring concerns the following actions have been undertaken:
 - A Traffic & Pedestrian Management Plan (see next slide) was developed and implemented within the school community, the plan:
 - reiterates consideration of neighbours eg. do not use the Horizons driveway as a U-turn bay or park over driveways, block traffic
 - reiterates safe behaviour eg. no double parking, illegally overtaking, stopping on pedestrian crossings, U-turns
 - supports ongoing parent /carer education in relation to traffic infringements and signage
 - Buses are encouraged to turn engines off when waiting for pick up / drop off to minimise air borne pollutants
 - Traffic control arranged when additional buses are required for transportation to offsite school events to ensure safety and minimise disruption of traffic to adjoining neighbours

Construction

- > A traffic management plan will be developed and implemented to minimising local impacts

Road Safety in the City of Sydney

Road safety in Sydney is important to everyone, particularly around school zones. Children, especially those in Primary School, are small, harder to see, behave unpredictably and are extremely vulnerable. This brochure has been designed to provide you with an understanding of the School's Traffic Management Plan. Please take time to read this brochure and to contact the School on 9332 1133 or feedback@sceggs.nsw.edu.au if you have any questions or suggestions about managing traffic around the School.



NO PARKING

This sign indicates that you have a maximum of two minutes to drop-off or pick-up and must remain in your vehicle. Disobeying this sign incurs a fine in excess of \$183 and the **loss of two demerit points**.

SEAT BELTS

Children aged between four and seven years old cannot travel in the front seat of a vehicle with two or more rows, unless all other back seats are occupied by children younger than seven years old in a car seat. The suggested minimum height for a child to use an adult lap-sash belt is 145cm. Make it a rule that every passenger must be securely buckled before you start your vehicle. The fine for driving with just one unrestrained passenger exceeds \$330 and incurs the **loss of three demerit points**.

PARKING

Parking signs with specified time limits allow drivers to park their vehicles for a certain period of time. Double parking, that is, stopping or parking your car alongside a car that is already parked parallel to the kerb, is not permitted. Double parking in a school zone incurs a fine more than \$330 and the **loss of two demerit points**.

U-TURNS

U-turns in the vicinity of the School are discouraged. This manoeuvre in a traffic-dense area is unsafe and blocks traffic flow. Illegal U-turns can attract penalties up to \$439 and the **loss of four demerit points**.

NO STOPPING

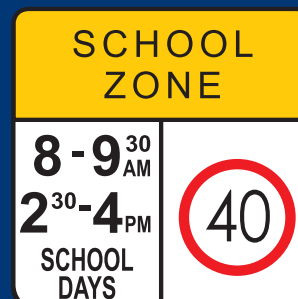
This sign indicates that you cannot stop for any reason, including when queuing for a space. It is illegal to park less than 10 metres from a corner, even if it is not signposted. Parking on the corner blocks vision for turning drivers and creates a hazard for all motorists, pedestrians and especially for children trying to cross the road. Ignoring this sign incurs a penalty in excess of \$439 and the **loss of four demerit points**.

MOBILE PHONES

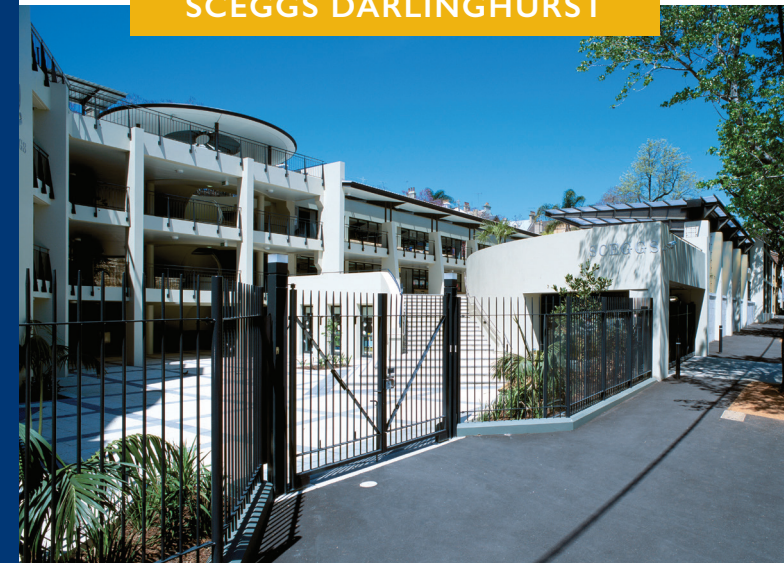
Please do not use your mobile phone while driving. The fine for using your mobile phone while driving can exceed \$330 and the **loss of four demerit points**.

SPEEDING

40km/h school zones operate on all school days as determined by NSW Government School Term dates. The 40km/h school zone also apply on staff development days or pupil free days. The maximum penalty for speeding in a designated school zone is \$3,740 and the **loss of seven demerit points**.



SCEGGS DARLINGHURST



Traffic and Pedestrian Management

Keeping our girls, families and the broader community safe

Your guide to driving safely during school drop-off and pick-up time around SCEGGS Darlinghurst

The beginning and end of the school day are busy times for pedestrians and vehicles outside the School. It is particularly important to take extra care at this time and be mindful of the 40km/h school zone which is in operation between 8.00am – 9.30am and 2.30pm – 4.00pm.

You can assist by:

- Delaying your arrival until 2.55pm if your daughter is in Kindergarten – Year 2 and 3.10pm for those in Year 3 – Year 12. The girls will not arrive at the gates before these times. If your daughter is not at the gate upon your arrival, be prepared to be directed to go around the block.
- Driving to the front of the pick-up zone queue so that as many cars as possible can pull in behind you. Don't just park in front of the school gate.
- Ensuring that all passengers have their seatbelts securely fastened before pulling away from the curb.
- Displaying the sign provided to you with your family name if your daughter is in Kindergarten – Year 5. Please don't assume that Traffic Management staff will be familiar with you or your vehicle.
- Being considerate of our neighbours and not blocking traffic in Bourke and Forbes Streets.
- Remaining in your vehicle. For their safety, children should only enter and exit vehicles directly onto the kerb. If this is not possible due to baby capsules or other child restraints, please consider how you might organise your children to ensure their safety.
- Using designated crossings.
- Following the instructions of the Traffic Controllers.
- Letting grandparents and other carers know this information if they are going to drop-off and/or pick-up your daughter.

Safety is compromised when:

- You jump the queue of waiting traffic. If you are in the queue, do not move to the pick-up zone until you are certain that space is available.
- Vehicles are double parked and children are trying to walk across Bourke or Forbes Streets.
- Vehicles stop on pedestrian crossings.
- Vehicles overtake illegally on the wrong side of the road to pass other vehicles waiting in the car line.
- A U-turn is attempted in the vicinity of the School.
- Vehicles pull into school driveways to drop-off or collect children.



E Display posters

Overview

SCEGGS Darlington is in the planning stages of a new Campus Masterplan and the redevelopment of Wilkinson House.

Why a masterplan

To allow for the creation of more engaging, innovative and functional learning spaces with consideration to the constraints of the site created by the physical environment and existing non-functional structures.

The proposed Campus Masterplan and delivery of the first stage of the masterplan, the Wilkinson House redevelopment, would:

- allow for the creation of highly functional, flexible and inspiring spaces that are conducive to future learning and working needs
- enhance currently underutilised campus areas
- improve integration of campus buildings and improve accessibility
- improve amenities.

There is no proposed increase in student numbers.

Current site plan



Timing

The masterplan would be delivered in stages, the first stage being the redevelopment of Wilkinson House. Following approval of the development application, construction would be expected to start by 2020.

Timing is to be confirmed for subsequent stages and projects may be carried out over a period of 20 years. We would continue to engage with community and stakeholders during planning and construction as subsequent stages are realised.



Planning process

The Planning Process

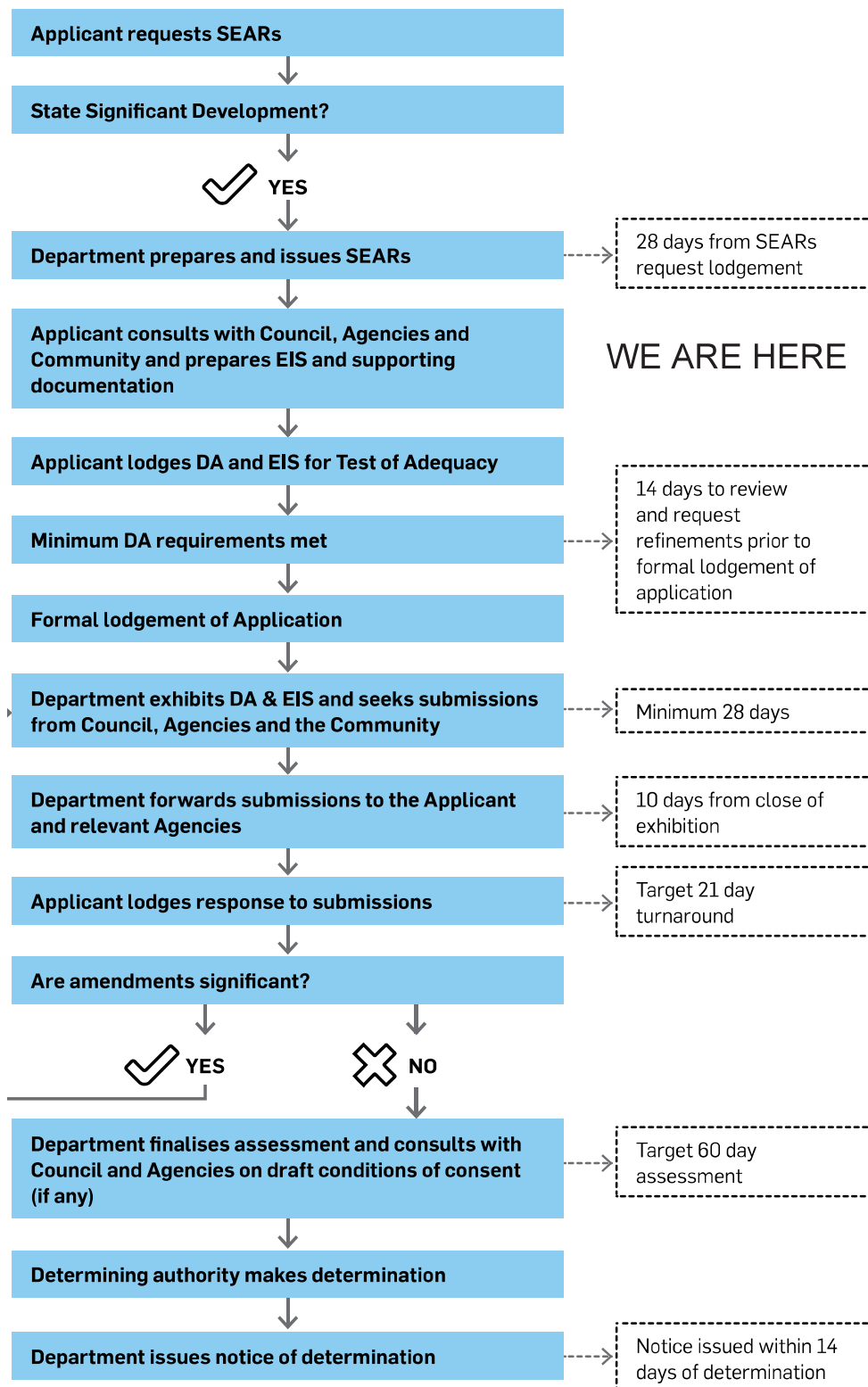
We are early in the planning process.

Our first step in 2017 was to apply to the Department of Planning and Environment (DPE) for the Secretary's Environmental Assessment Requirements (SEARs).

The requirements were granted in January 2018, which allowed us to start preparing an Environmental Impact Statement (EIS).

All new schools and significant alterations and additions to existing schools with a project cost of more than \$20 million are categorised as a State Significant Development (SSD). While the Department of Planning and Environment is the approval authority, we will continue to work constructively with City of Sydney Council at each step in the process.

State Significant Development Approval Process



The Masterplan

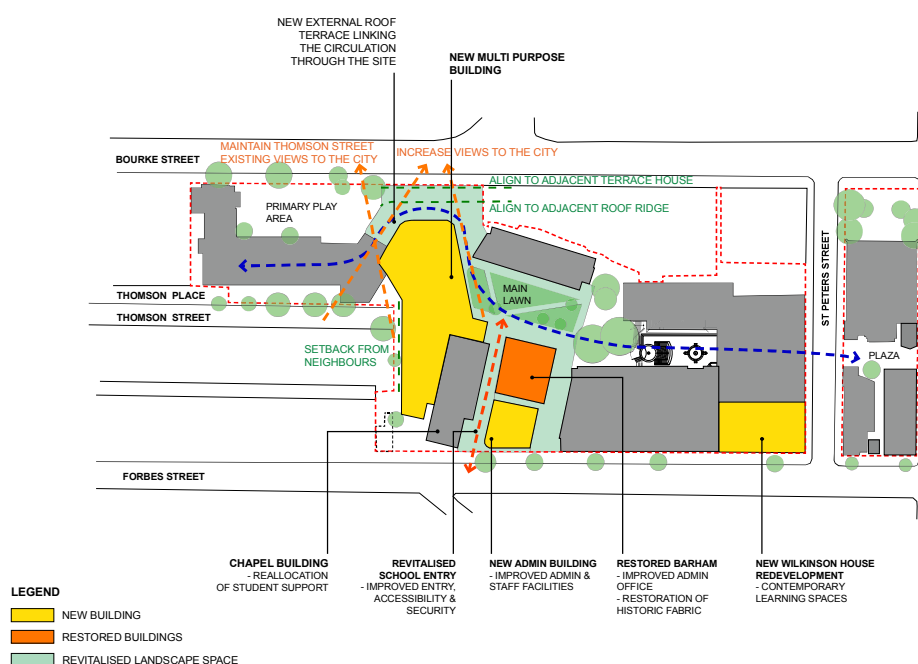
Our vision is to provide highly functional, flexible and inspiring learning spaces that ensure we continue to deliver the best possible education for our girls, now and in the future.

The proposed Masterplan

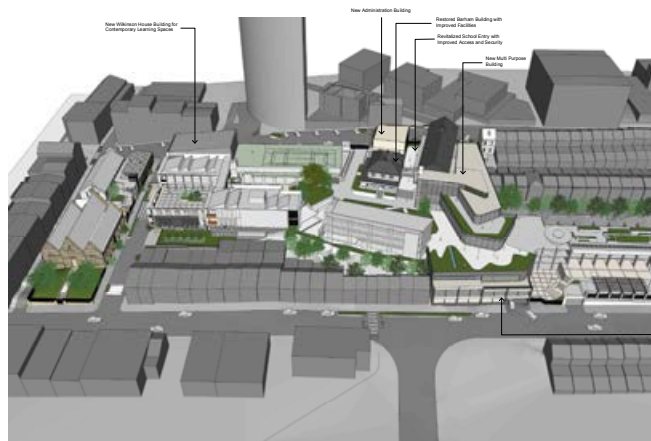
- Wilkinson House demolition and redevelopment
- New Administration Building and restoration of Barham Building
- New Multi-Purpose Building

The intent of the Masterplan is to refresh the existing school facilities to support the delivery of the education curriculum. An indicative usage profile will be prepared with the school and submitted to the Department of Planning and Environment for consideration.

Proposed Masterplan Overview

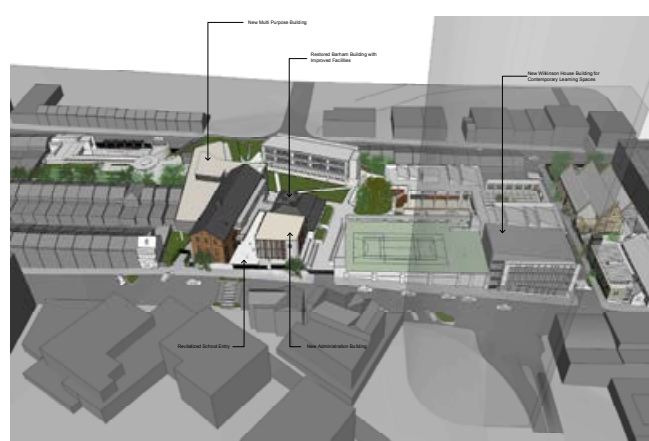


PROPOSED MASTERPLAN | 3D VIEWS



MASTERPLAN CONCEPT IMAGE

PROPOSED MASTERPLAN | 3D VIEWS



MASTERPLAN CONCEPT IMAGE



The Masterplan

New Multi-Purpose Building

The New Multi-Purpose Building would provide new and improved compliant facilities in accordance with the NSW Department of Education and Learning guidelines and current Building Codes of Australia. We are exploring opportunities for the building to accommodate:

- a central school library
- general learning areas
- multi-purpose meeting rooms
- an early learning childcare centre
- an indoor pool.

The new building would include limited basement car parking with additional pick-up and drop-off car spaces accessed from Bourke Street.

External spaces around the building footprint would be designed to create new greener spaces for staff and student amenity and enhance aesthetic appearance.



New Administration Building and Barham restoration

The historic fabric of the Barham building would be restored and spaces improved.

A new administrative building would provide improved administrative and staff facilities. The school entry would be revitalised and accessibility and security would be improved.

