

CHARACTER ZONE - CENTRAL LAWN

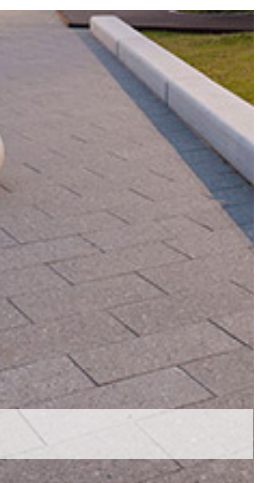
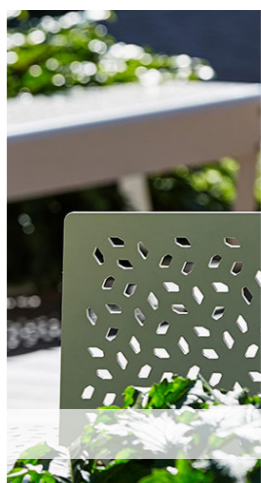
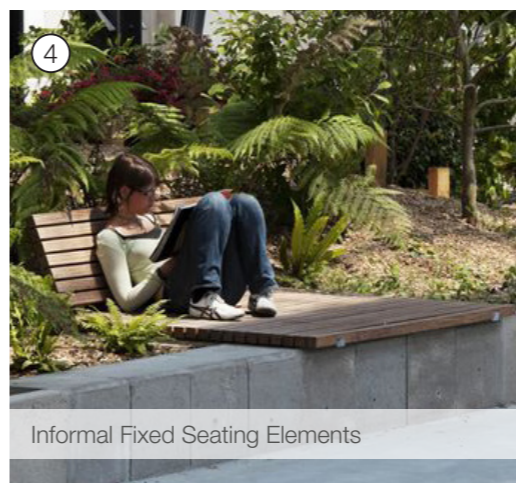
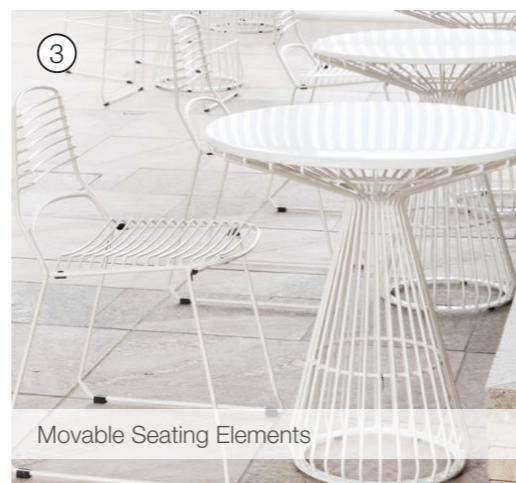
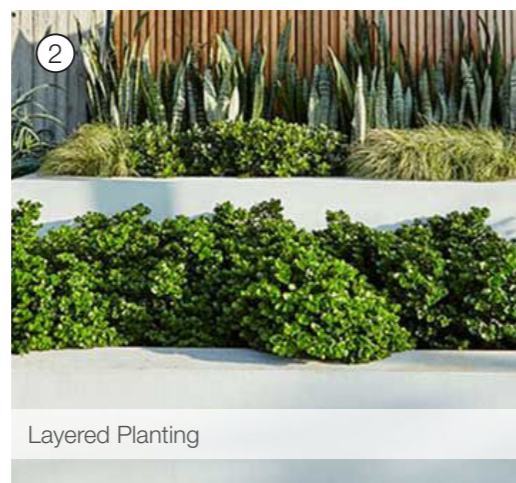
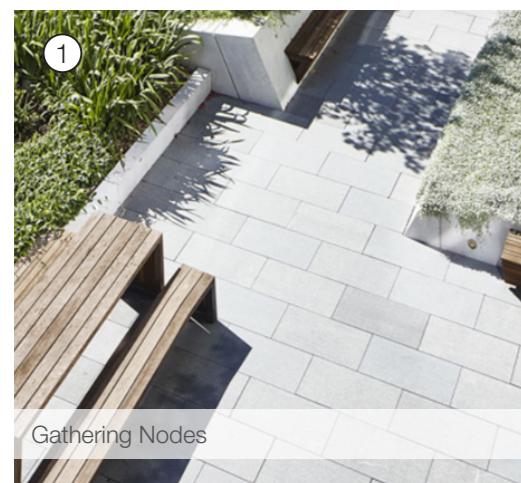


Perspective of Proposed Podium And Lawn Treatment

CHARACTER ZONE - CENTRAL LAWN



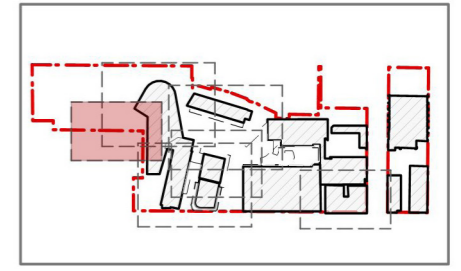
CHARACTER ZONES - PODIUM + ROOFTOP



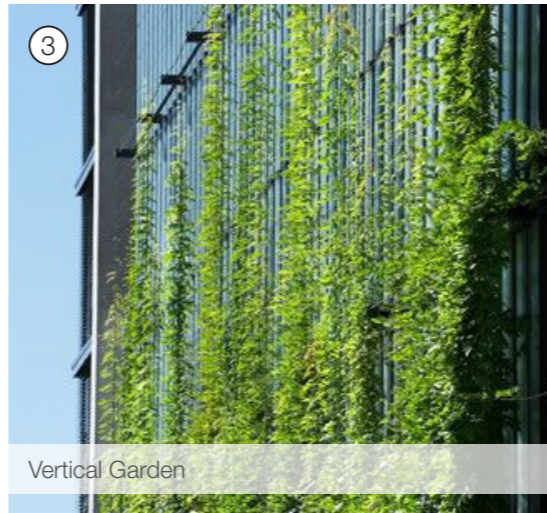
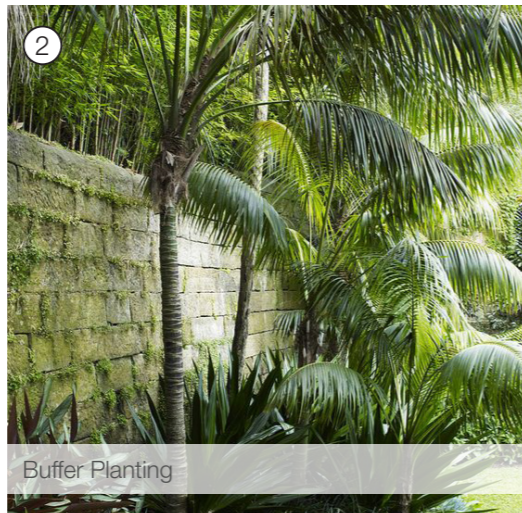
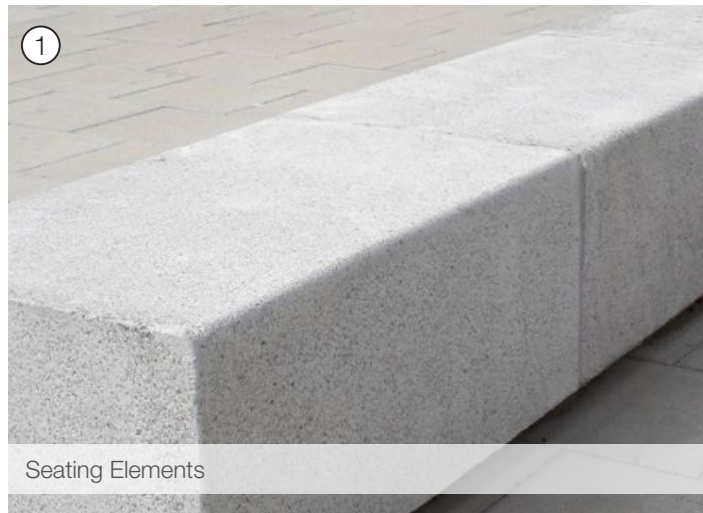
CHARACTER ZONES - PODIUM + ROOFTOP



CHARACTER ZONE - THOMSON STREET

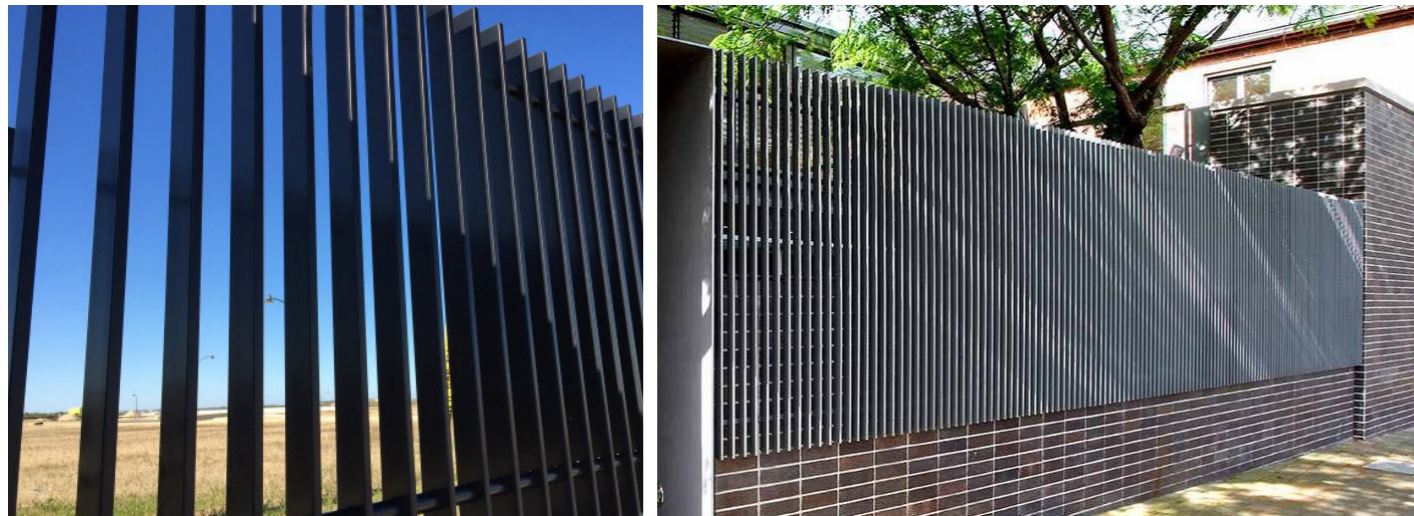
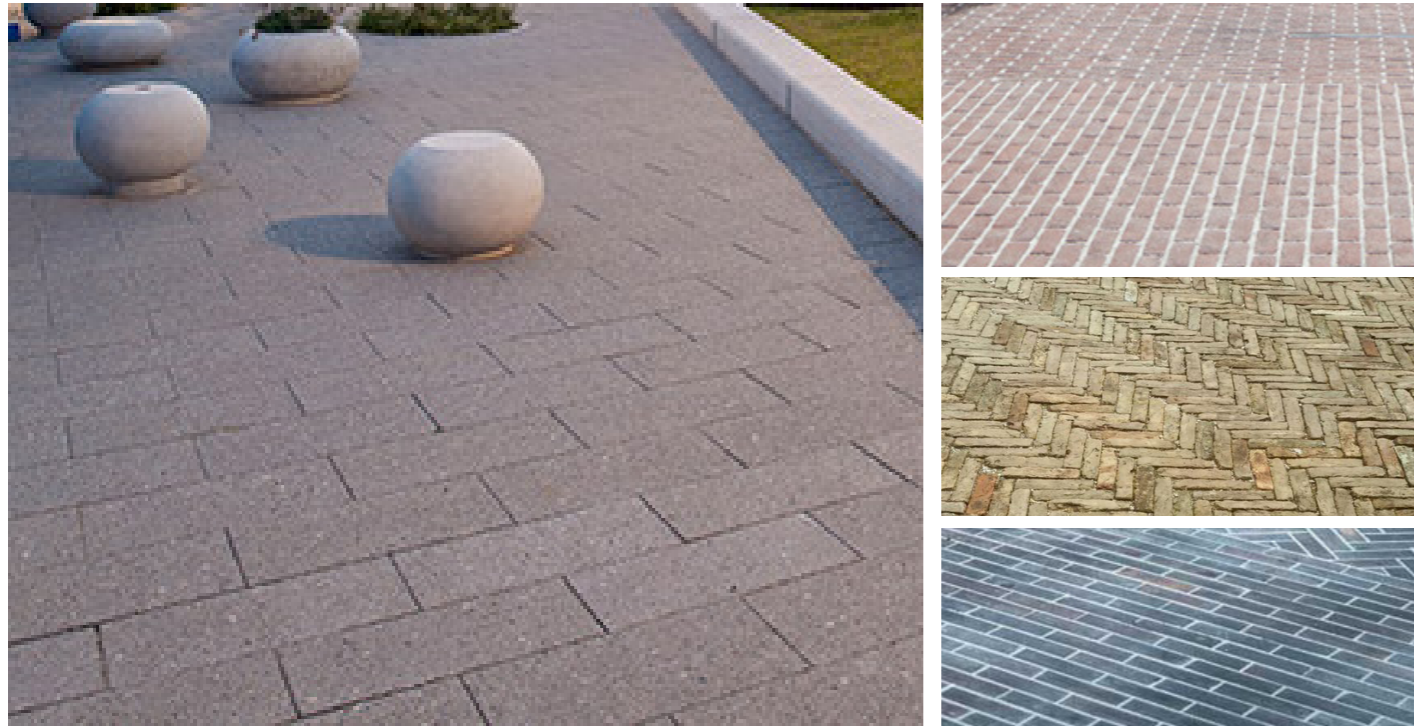


- SITE / PROPERTY BOUNDARY
- EXISTING TREES TO BE RETAINED
- PROPOSED TREES
- PROPOSED FEATURE TREES
- PLANTING 1: FEATURE PLANTING
- PLANTING 2: MASS PLANTING
- PLANTING 3: CLIMBING PLANTS
- TURFED AREA
- SYNTHETIC TURF
- EXISTING PAVED AREAS
- EXISTING DECOMPOSED GRANITE
- INSITU CONCRETE WALL
- CONCRETE BLEACHER STEPS
- PAVING TYPE 1: LARGE FORMAT STONE PAVING
- PAVING TYPE 2: RECYCLED HERRINGBONE BRICK PAVING
- FURNITURE
- ENGRAVED EDGING



MATERIALITY

MATERIALS PALLETTE



INDICATIVE PLANT SCHEDULE

PLANT SCHEDULE - WOMEN'S COLLEGE, SYDNEY UNIVERSITY				
BOTANICAL NAME	COMMON NAME	MATURE HxW (m)	SPACING	INSTALLATION POT SIZE
Trees				
<i>Citrus limon</i>	Lemon Tree	5x4m	As shown	45L
<i>Cupaniopsis anacardioides</i>	Tuckeroo	8x5m	As shown	45L
<i>Jacaranda mimosifolia</i>	Jacaranda	10x7m	As shown	100L
<i>Lagerstroemia indica</i> 'Natchez'	Crepe Myrtle	6x4m	As shown	45L
<i>Malus domestica</i>	Apple Tree	3x4m	1000mm	45L
<i>Olea europaea</i>	Olive Tree	8x4m	As shown	100L
<i>Pyrus communis</i>	European pear	3x4m	1000mm	45L
<i>Rhapis excelsa</i>	Broadleaf Lady Palm	3x1m	As shown	45L
<i>Syzygium smithii</i>	Lilly Pilly	8x6m	As shown	45L
Shrubs (1.5-3m)				
<i>Azalea rhododendron</i>	Rhododendron	3x3m	2/m ²	300mm
<i>Brunfelsia bonodora</i>	Yesterday Today Tomorrow	3x2m	2/m ²	300mm
<i>Callistemon citrinus</i>	Crimson Bottlebrush	3x2m	As shown	300mm
<i>Camellia sasanqua</i>	Camellia	4x2m	2/m ²	45L
<i>Syzygium australe</i> 'Select form'	Select Form Lilly Pilly	3x1.5m	3/m ²	300mm
Low Shrubs (1-1.5m)				
<i>Acanthus mollis</i>	Oyster Plant	2x0.5m	As shown	200mm
<i>Agapanthus orientalis</i>	African Lily	1x0.8m	4/m ²	200mm
<i>Anemone x hybrida</i>	Japanese Windflowers	1x0.5m	6/m ²	200mm
<i>Buxus japonica</i>	Japanese Box Hedge	1.5x1.0m	2/m ²	200mm
<i>Echium candicans</i>	Pride of Madeira	1.8x1.2m	As shown	200mm
<i>Gardenia augusta</i> 'Florida'	Fragrant Gardenia	1x1m	As shown	200mm
<i>Guzmania bromeliad</i>	Bromeliad	0.5x0.5m	6/m ²	150mm
<i>Ozothamnus diosmifolius</i>	Riceflower	1.5x1m	4/m ²	200mm
<i>Rhaphiolepis indica</i>	White Indian Hawthorn	1.0x1.0m	2/m ²	300mm
<i>Rhaphiolepis indica</i> 'Oriental pearl'	Oriental Pearl Indian Hawthorn	1.0x1.0m	2/m ²	200mm
<i>Rosmarinus officinalis</i>	Rosemary	1.5x0.9m	3/m ²	150mm
<i>Sansevieria trifasciata</i>	Mother in Law's Tongue	1.5x0.5m	6/m ²	150mm
<i>Teucrium fruticans</i>	Silver Germander	1.2x1.8m	2/m ²	200mm
Groundcover				
<i>Clivia miniata</i>	Clivia / Kaffir Lily	0.4x0.4m	8/m ²	150mm
<i>Convolvulus sabatius</i>	Bindweed	0.3x1.5m	5/m ²	150mm
<i>Dianella caerulea</i>	Blue flax-lily	0.5x0.5m	6/m ²	300mm
<i>Dichondra repens</i>	Kidney Weed	0.1x1.0m	4/m ²	150mm
<i>Erigeron karvinskianus</i>	Seaside Daisy	0.6x0.3m	4/m ²	150mm
<i>Liriope muscari</i> 'evergreen giant'	Lily Turf	0.5x0.7m	6/m ²	150mm
<i>Lomandra longifolia</i> 'Tanika'	Tanika	0.5x0.7m	6/m ²	150mm
<i>Ophiopogon japonicus</i>	Mondo Grass	0.2x0.15m	11/m ²	100mm
<i>Philodendron xanadu</i>	Xanadu	0.6x0.6m	4/m ²	150mm
<i>Trachelospermum asiaticum</i>	Japanese Star Jasmine	0.3xProstrate	3/m ²	200mm
Climbers/trailers				
<i>Pandorea pandorana</i>	Wonga Wonga Vine	5x3m	300mm	150mm
<i>Clematis aristata</i>	Australian Clematis	0.3xProstrate	300mm	150mm