




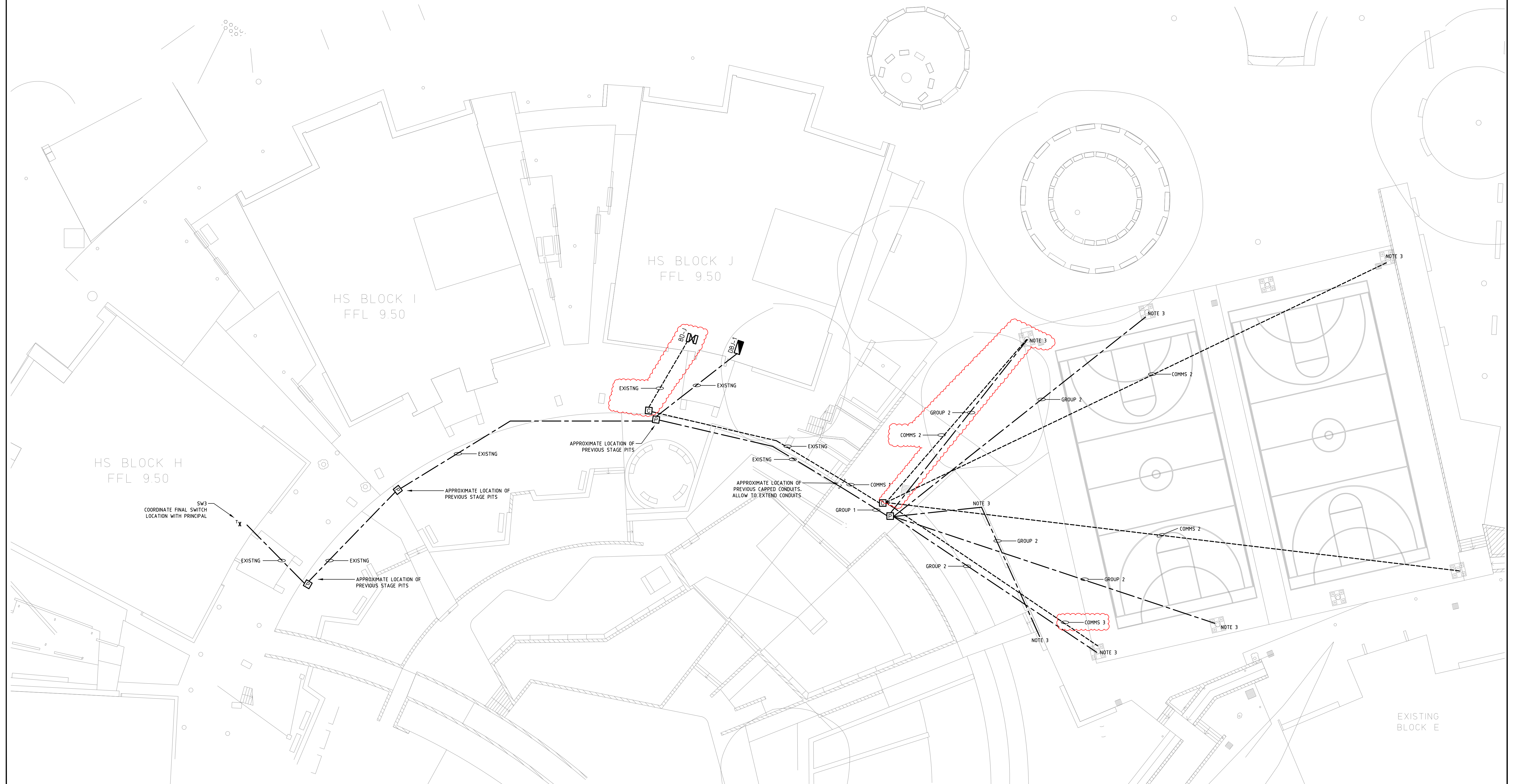


— — — POWER CONDUIT
- - - - - COMMS CONDUIT

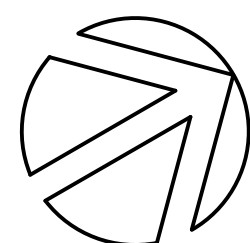
 POWER PIT
 COMMS PIT
 DISTRIBUTION BOARD
 BUILDING DISTRIBUTOR
 ELECTRONIC TIMED LIGHT SWITCH IN INDUSTRIAL VANDAL RESISTANT ENCLOSURE

- GROUP 1
 - 2x100mm HDUPVC CONDUITS
 - 2x50mm HDUPVC CONDUITS
- GROUP 2
 - 1x40mm HDUPVC CONDUIT
- COMMS 1
 - 1x100mm COMMS CONDUIT
 - 3x50mm COMMS CONDUITS
- COMMS 2
 - 1x32mm COMMS CONDUIT
- COMMS 3
 - 2x32mm COMMS CONDUIT

1. DRAWINGS TO BE READ IN CONJUNCTION WITH ARCHITECTURAL AND OTHER SERVICES LAYOUTS.
2. CONDUITS TO BE BURIED AT 500mm MINIMUM. CONDUITS SHOWN ARE DIAGRAMMATIC ONLY FOR CLARITY. EXACT LOCATIONS TO BE DETERMINED ON SITE.
3. COORDINATE FINAL TURN UP LOCATIONS ON SITE.



B	REVISED TENDER ISSUE	CS	MS	12.12.24
A	FOR TENDER	CS	MS	16.08.24
REV	REVISION DETAILS	BY	APP.	DATE



SCALE BAR 1:200



ALL DIMENSIONS ARE IN MILLIMETRES UNLESS OTHERWISE SHOWN

Completion of the Drawing Status is evidence that the design has been verified conforming to the requirements of the Project Quality Plan			
DRAWING STATUS	Reviewed By:	Signature	Date
Preliminary			
For Information Only			
For Approval			
For Tender	MS	MS	16.08.24
For Construction			



386 MAITLAND ROAD
MAYFIELD NSW 2304
02 4967 5999
MAIL@EPA.ENERGY

PROJECT:
CATHERINE McAULEY -
COLA/SHADE STRUCTURE

CLIENT:
WEBBER ARCHITECTS

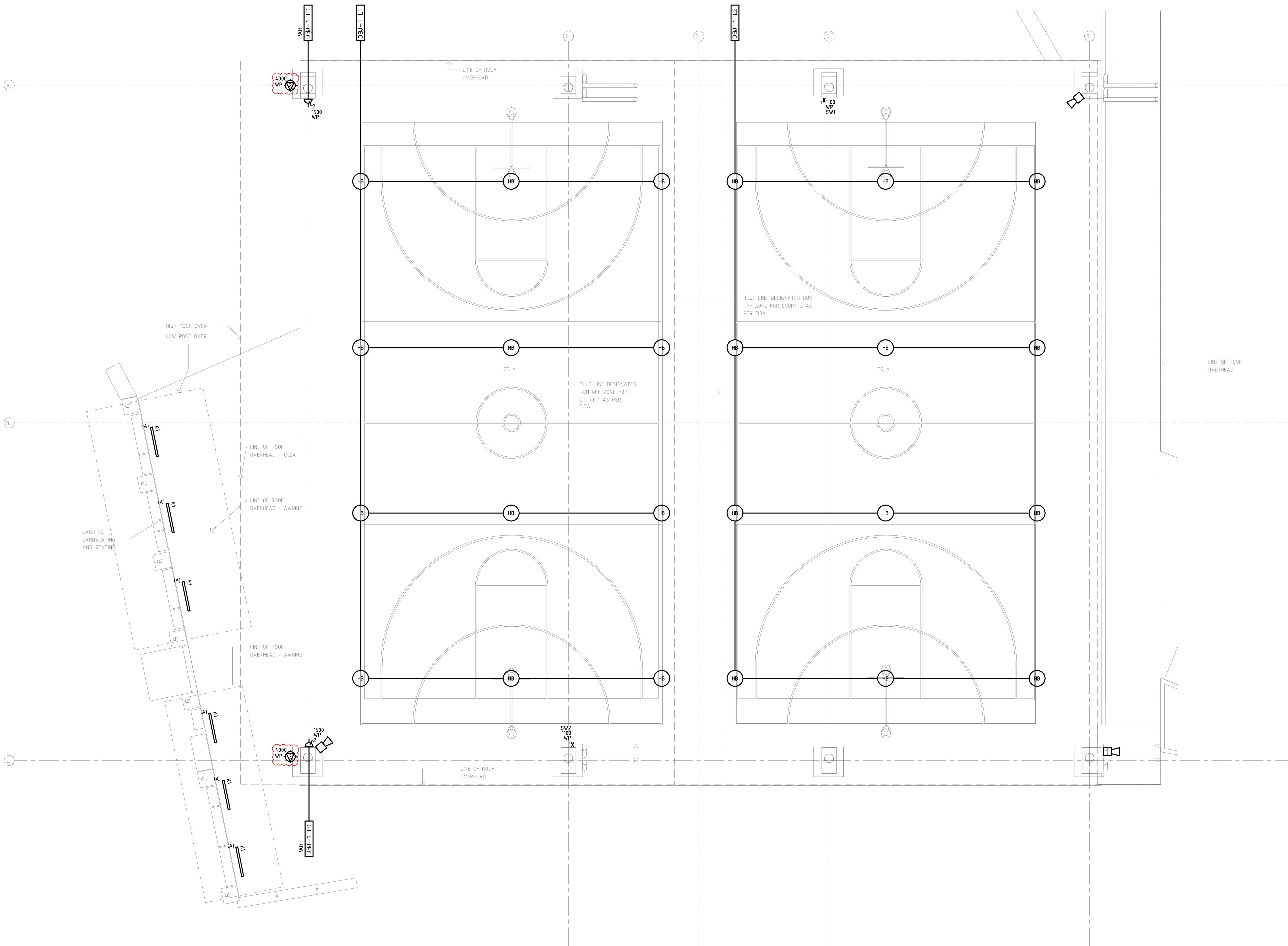
LOCATION:
507 MEDOWIE ROAD,
MEDOWIE NSW 2318

DRAWING:
SITE PLAN
ELECTRICAL LAYOUT

DATE: 28.06.24 DRAWN: LM

SCALE: 1:200@A1 DESIGN: MS

PROJECT No.	DRAWING No:	ISSUE:
24175	E03	B



LIGHTING LEGEND

- HB 100W LED HIGHBAY - LOWA LIGHTING VISO (NOTE 4)
- TX ELECTRONIC TIMED LIGHT SWITCH IN INDUSTRIAL VANDAL RESISTANT ENCLOSURE
- K1 LINEAR SURFACE MOUNTED EXTRUSION - LOWA EX-60-S IP54 28W/m 4250lm/m 4K (TO MATCH EXISTING WALKWAY LIGHTS)
- (A) ACCESS LIGHTING
- 1000 HEIGHT IN MILLIMETERS
- SWx SWITCH NUMBER
- WP WEATHERPROOF
- DB L DISTRIBUTION BOARD / CIRCUIT NUMBER

LIGHTING NOTES

- DRAWING TO BE READ IN CONJUNCTION WITH ARCHITECTURAL ELEVATIONS/SECTIONS AND FURNITURE LAYOUTS.
- HIGH BAYS LIGHTS TO BE SUSPENDED ON SUPPORTS FROM COLA STRUCTURE.
- SWITCHING TO BE LOCALLY AND REMOTE FROM BLOCK H LIBRARY.
- RETICULATION TO HIGHBAYS TO BE DISCRETE AND POTENTIALLY CONCEALED WITHIN CHS COLUMNS. FINAL DETAILS TBC

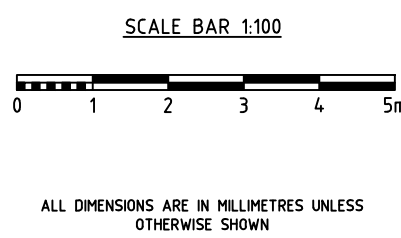
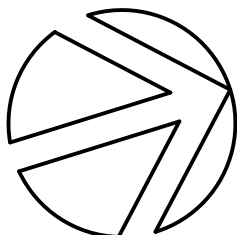
POWER LEGEND

- 2 DOUBLE SWITCHED SOCKET OUTLET (10A)
- WEATHERPROOF DUAL DATA POINT WALL MOUNTED WITH IMPACT RESISTANT BRACKET (MATCHING EXISTING MODEL IN HIGH SCHOOL)
- 1000 HEIGHT IN MILLIMETERS
- WP WEATHERPROOF
- PA SPEAKER

POWER NOTES

- DRAWING TO BE READ IN CONJUNCTION WITH ARCHITECTURAL ELEVATIONS/SECTIONS AND FURNITURE LAYOUTS.
- PA SPEAKERS TO BE ON NEW PA SPEAKER ZONE.

C	REVISED TENDER ISSUE	CS	MS	12.12.24	
B	FOR TENDER	CS	MS	16.08.24	
A	PRELIMINARY ISSUE	LM	MS	28.06.24	
REV	REVISION DETAILS	BY	APP.	DATE	



Completion of the Drawing Status is evidence that the design has been verified as conforming to the requirements of the Project Quality Plan			
DRAWING STATUS	Reviewed By:	Signature	Date
Preliminary	MS	MS	28.06.24
For Information Only			
For Approval			
For Tender	MS	MS	16.08.24
For Construction			

DESIGNED BY:

ELECTRICAL PROJECTS AUSTRALIA

386 MAITLAND ROAD
MAYFIELD NSW 2304
02 4967 5999
MAIL@EPA.ENERGY

PROJECT:
CATHERINE McAULEY -
COLA/SHADE STRUCTURE

CLIENT:
WEBBER ARCHITECTS

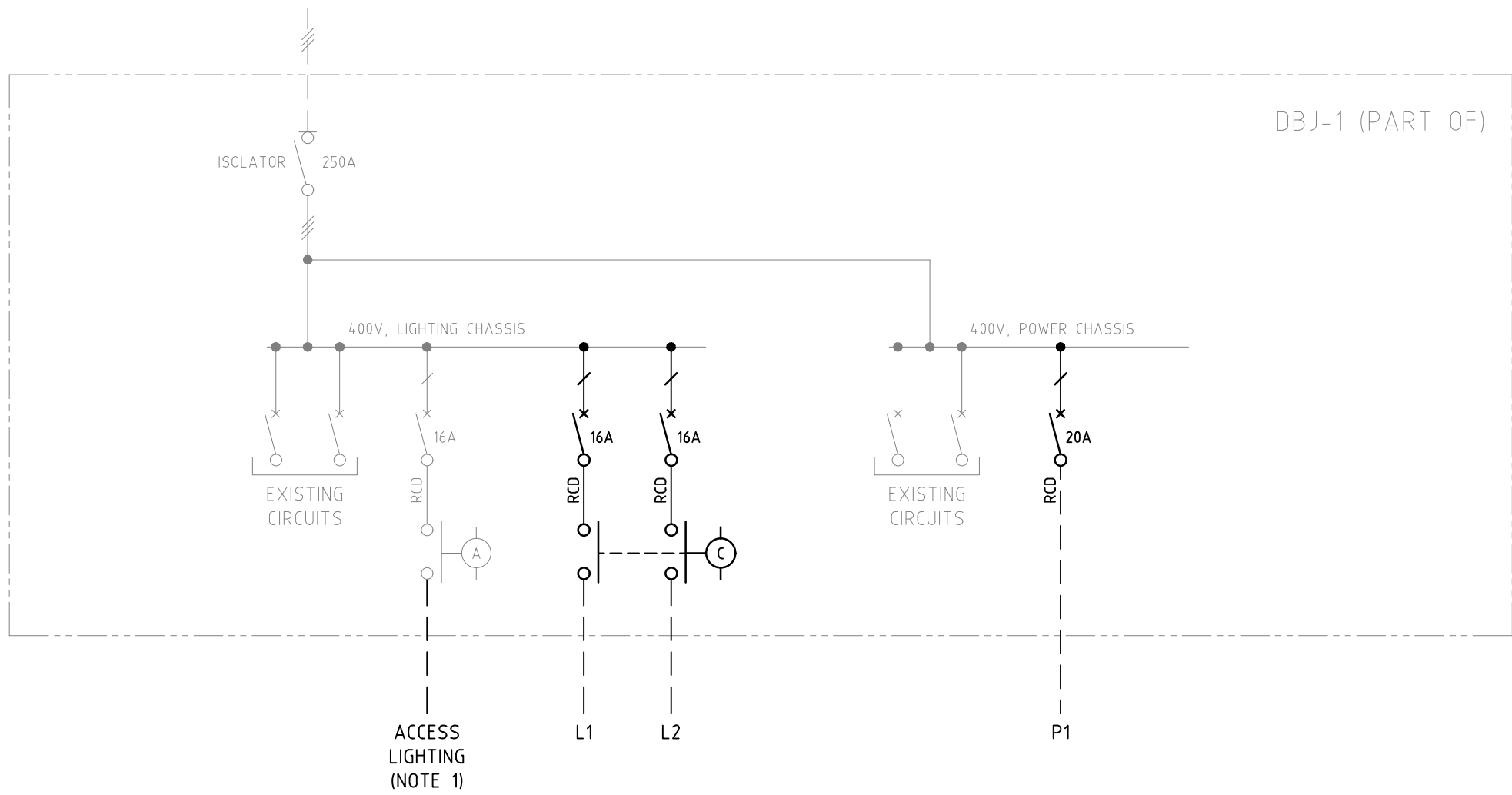
LOCATION:
507 MEDOWIE ROAD,
MEDOWIE NSW 2318

DRAWING:
POWER & LIGHTING LAYOUT

DATE: 28.06.24 DRAWN: LM

SCALE: 1:100@A1 DESIGN: MS

PROJECT No. 24175 DRAWING No. E01 ISSUE: C

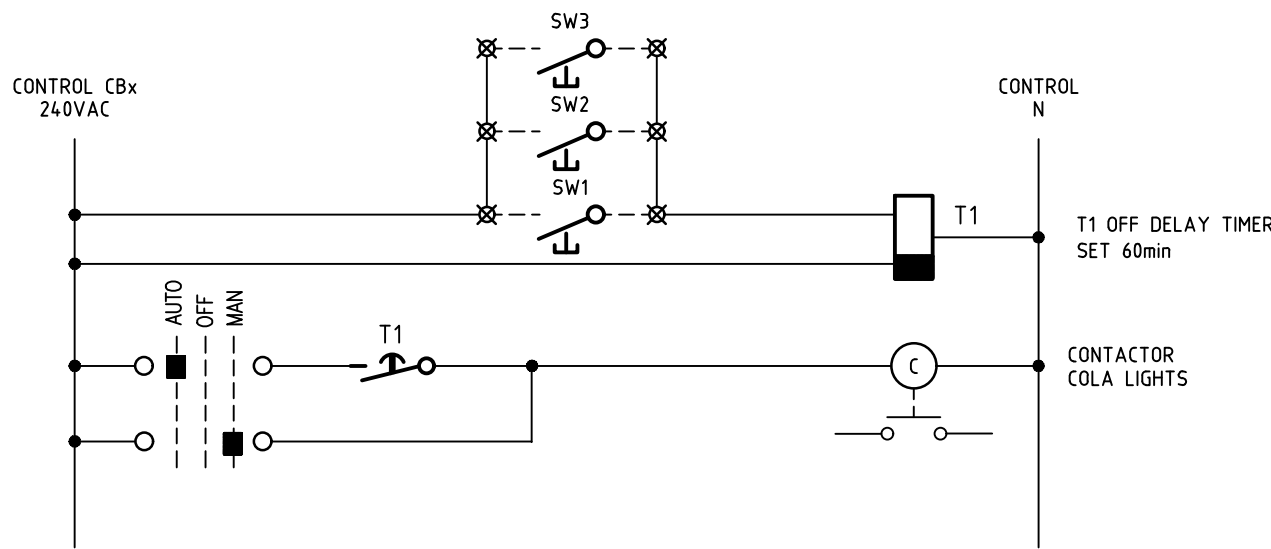


LEGEND

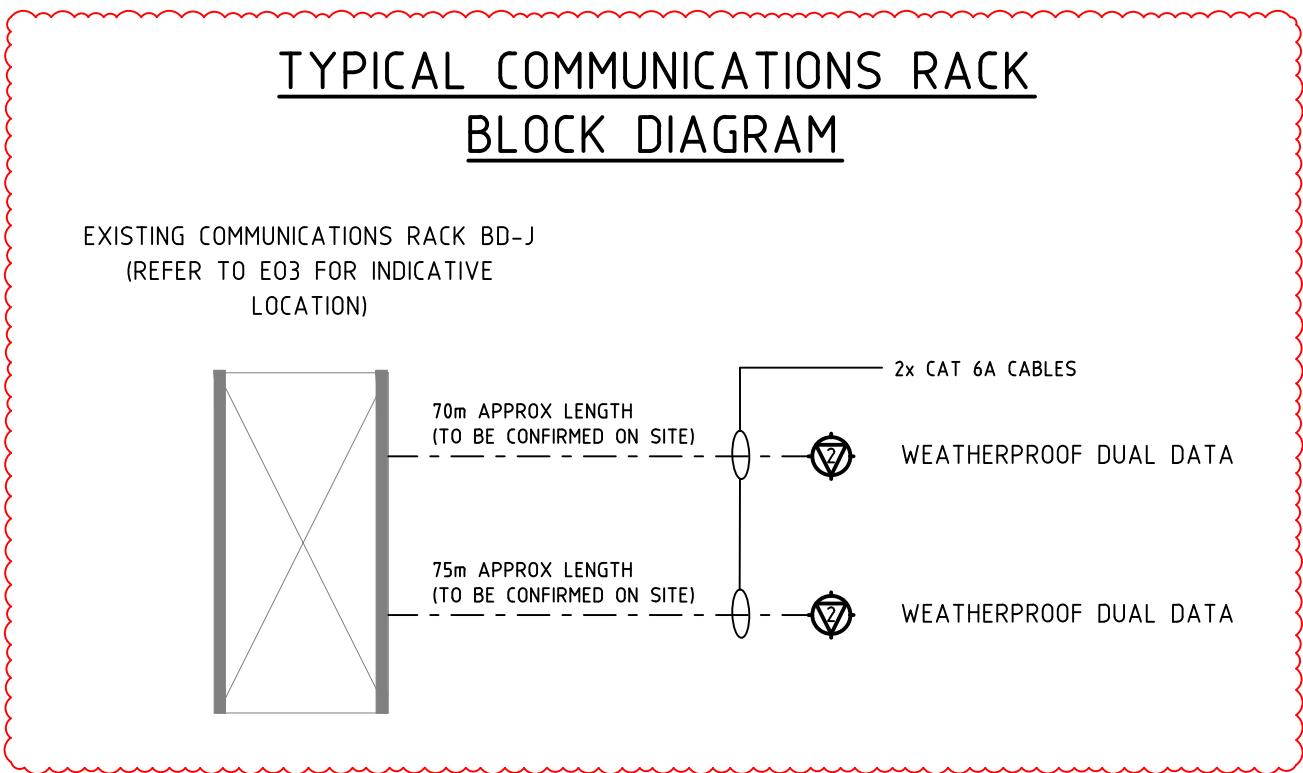
- FIELD WIRING SHOWN AS DASHED
- 20A CIRCUIT BREAKER (RATING SHOWN)
- 100A ISOLATOR (RATING SHOWN)
- CONTACTOR
- RCD RESIDUAL CURRENT DEVICE

NOTES

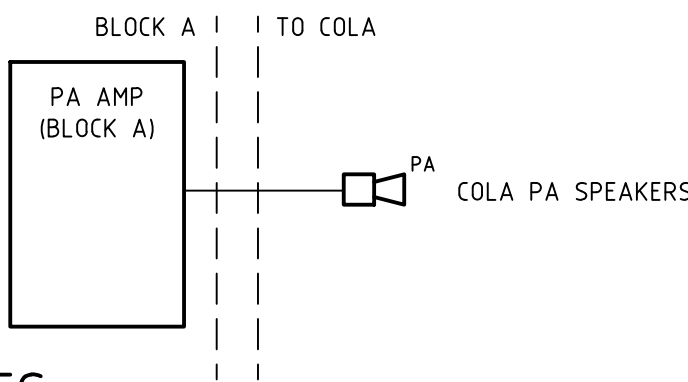
1. EXTEND EXISTING ACCESS LIGHTING TO NEW TRACK LIGHTING.



TYPICAL COLA LIGHTING CONTROL
(LOCATED WITHIN DBJ-1)



TYPICAL PA SYSTEM BLOCK DIAGRAM



NOTES

1. PA SPEAKER CABLING FROM BLOCK A COMMS ROOM TO NEW COLA PA SPEAKERS (VIA EXISTING CONDUITS) TO BE DOUBLE INSULATED TWISTED PAIR 100V LINE CABLE. APPROX LENGTH OF 220m, TO BE CONFIRMED ON SITE.

B	REVISED TENDER ISSUE	CS	MS	12.12.24
A	FOR TENDER	CS	MS	16.08.24
REV	REVISION DETAILS	BY	APP.	DATE

Completion of the Drawing Status is evidence that the design has been verified as conforming to the requirements of the Project Quality Plan			
DRAWING STATUS	Reviewed By:	Signature	Date
Preliminary			
For Information Only			
For Approval			
For Tender	MS	MS	16.08.24
For Construction			

DESIGNED BY:

ELECTRICAL PROJECTS AUSTRALIA

386 MAITLAND ROAD
MAYFIELD NSW 2304
02 4967 5999
MAIL@EPA.ENERGY

PROJECT:

CATHERINE McAULEY - COLA/SHADE STRUCTURE

CLIENT:

WEBBER ARCHITECTS

LOCATION:

507 MEDOWIE ROAD,
MEDOWIE NSW 2318

DRAWING:

SINGLE LINE & CONTROL DIAGRAMS

DATE: 28.06.24

DRAWN: LM

SCALE: NTS@A1

DESIGN: MS

PROJECT No. 24175

DRAWING No. E02

ISSUE: B