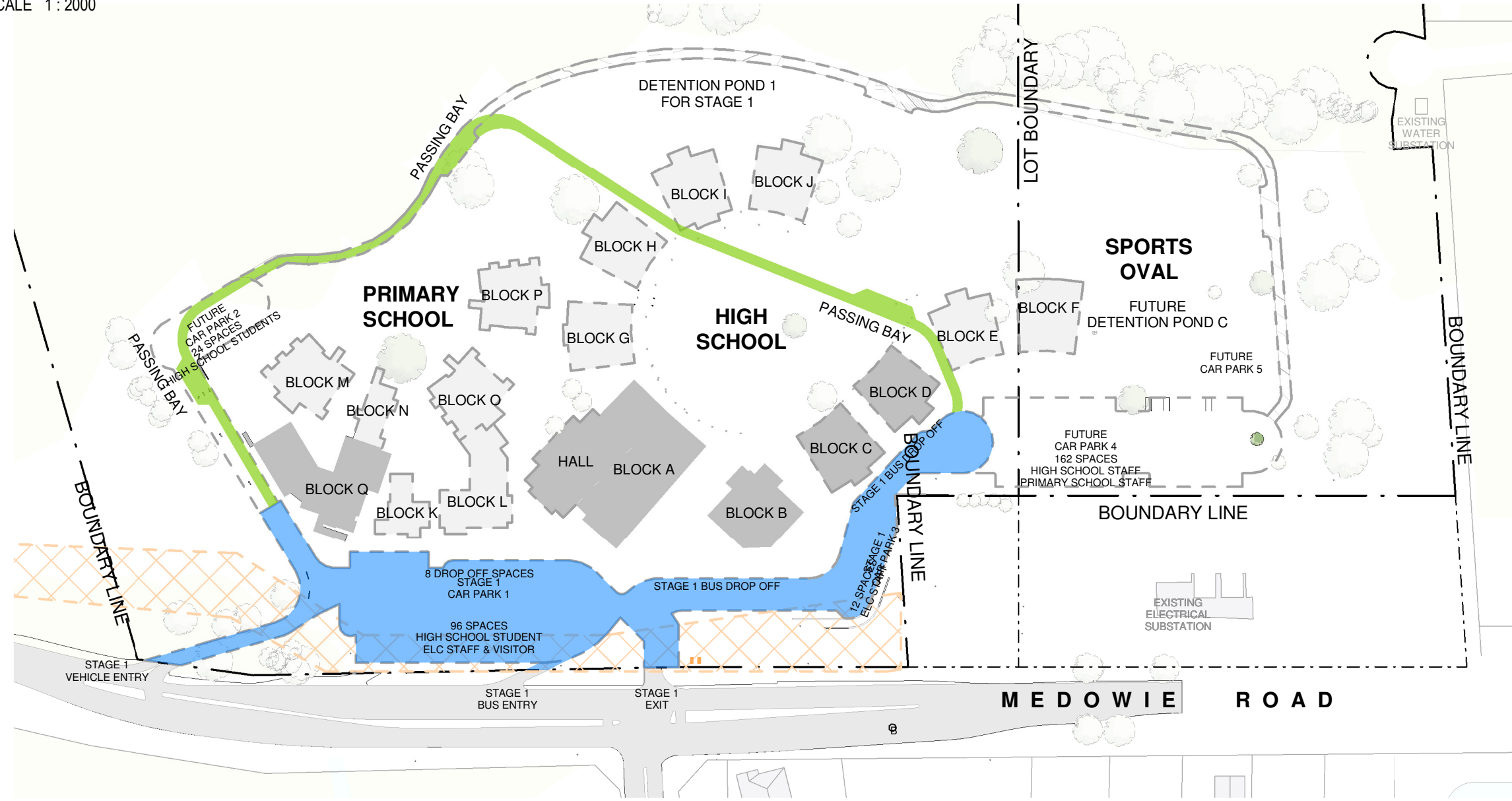
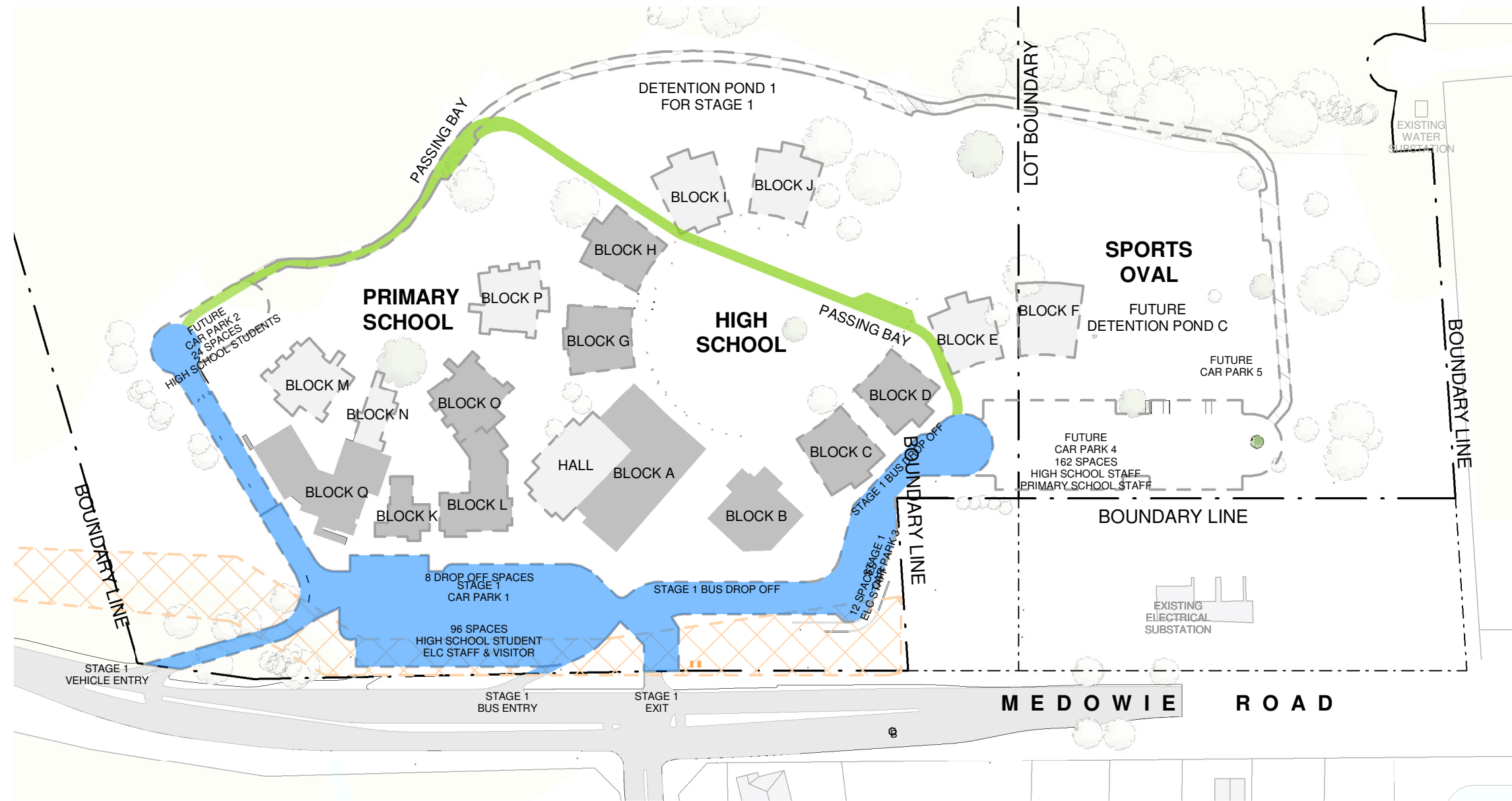


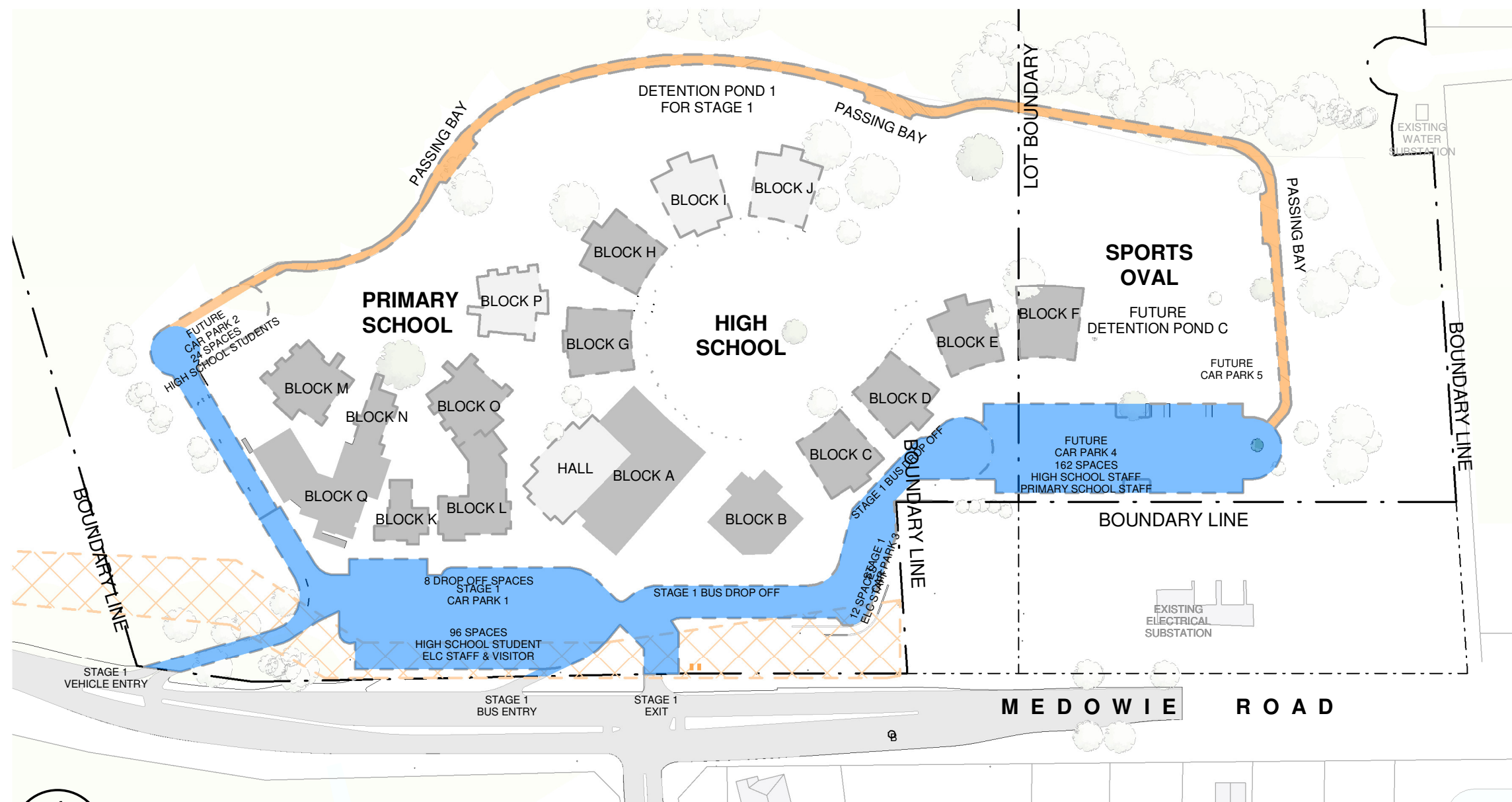
1 SITE FIRE TRAIL - STAGE 1
04_0001 SCALE 1:2000



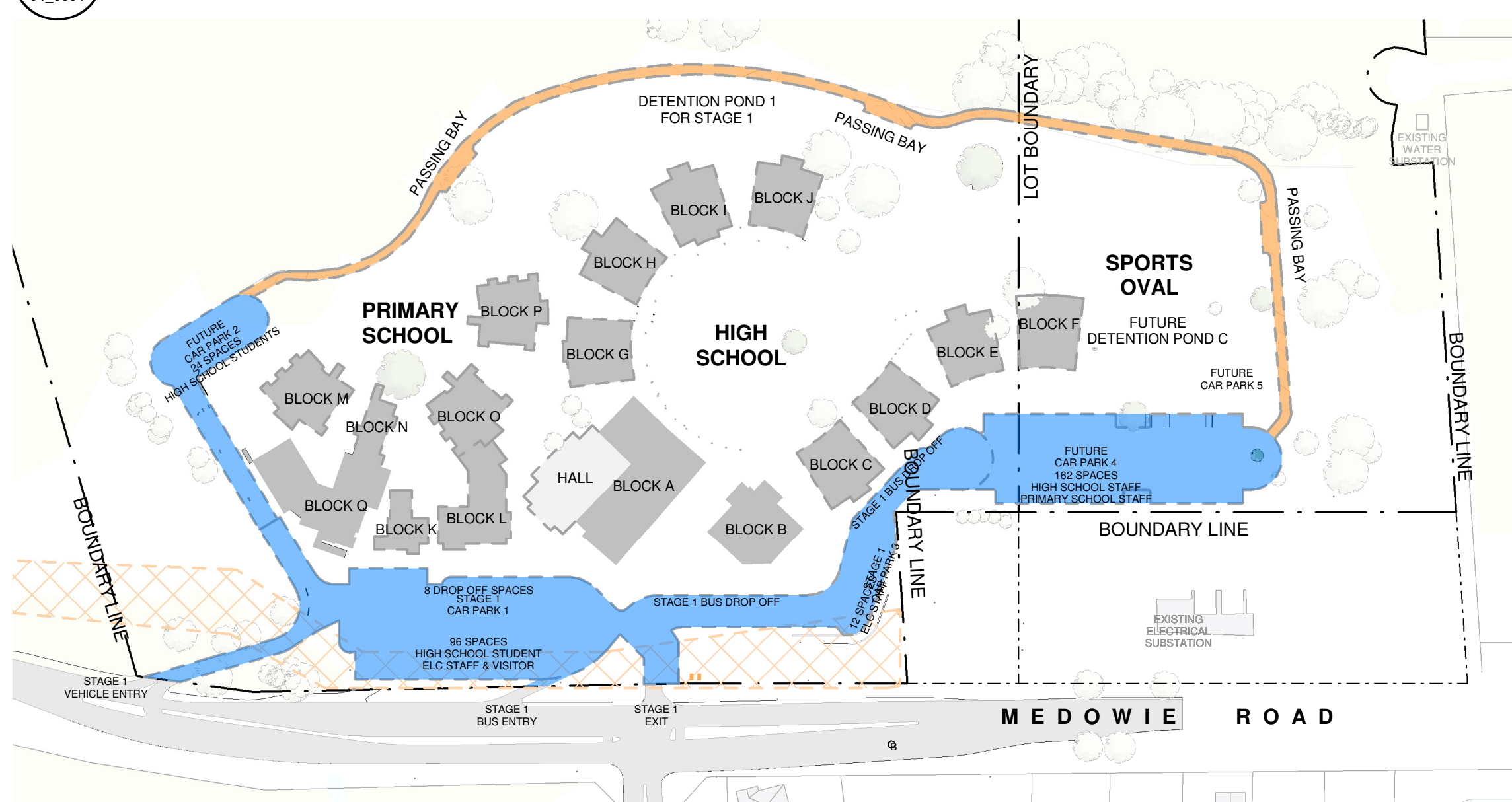
2 SITE FIRE TRAIL - STAGE 2
04_0001 SCALE 1:2000



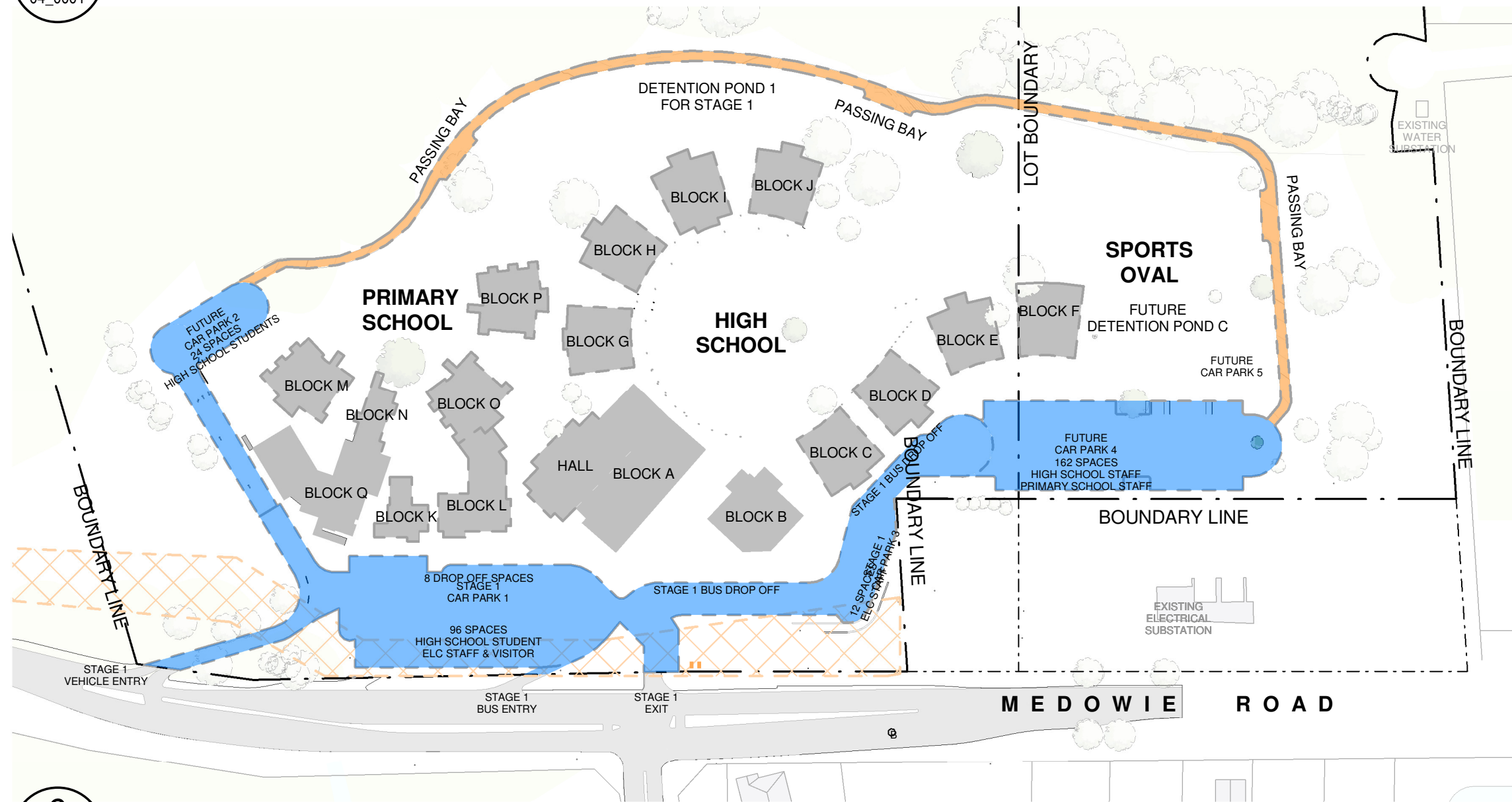
3 SITE FIRE TRAIL - STAGE 3
04_0001 SCALE 1:2000



4 SITE FIRE TRAIL - STAGE 4
04_0001 SCALE 1:2000



5 SITE FIRE TRAIL - STAGE 5
04_0001 SCALE 1:2000



6 SITE FIRE TRAIL - STAGE 6
04_0001 SCALE 1:2000

- FUTURE STRUCTURE / BUILDING
- PROPOSED STRUCTURE / BUILDING
- PROPOSED VEHICLE ROAD / CAR PARK
- 4M WIDE COMPRESSED GRASS TEMPORARY FIRE TRAIL (UNSEALED) WITH 10° FALL MAX. & 1M BUSH CLEARANCE EACH SIDE OF TRAIL. PASSING BAY EVERY 200M.
- 4M WIDE COMPRESSED GRAVEL FIRE TRAIL WITH 15° GRADE MAX. & 1M BUSH CLEARANCE EACH SIDE OF TRAIL. PASSING BAY EVERY 200M.

SITE LEGEND - FIRE TRAIL STAGING

REV	DATE	DESCRIPTION	BY	CHK
A	28.09.2018	RESPONSE TO SUBMISSIONS	LK	
B	19.12.2018	RESPONSE TO SUBMISSIONS	LK	

DRAWING COLOUR CODED -
PRINT ALL COPIES IN COLOUR

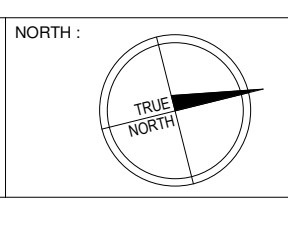
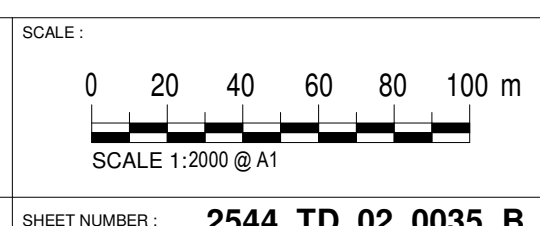


webber

architects
interior
urban

SITE FIRE TRIAL STAGING
MEDOWIE CATHOLIC COLLEGE
CATHERINE McAULEY CATHOLIC COLLEGE
507 MEDOWIE ROAD, MEDOWIE

ISSUED:
PRELIMINARY ONLY
NOT FOR CONSTRUCTION
PROJECT COMMENCEMENT DATE: 01.05.2017



BUILDER TO CONFIRM ALL DETAILS, SETOUTS (TILE, ETC.), FALLS & CONNECTIONS ON SITE BEFORE CONSTRUCTION

PRINT DATE: 19/12/2018 2:10:02 PM FILE PATH: T:\Revit Locals\2544 Medowie Catholic School_LukeH\JSD.rvt

This drawing and the design expressed are copyright and remain the property of Webber Architects. In accordance with the commonwealth copyright act 1968 this drawing and design in whole or part may not be used unless licensed by Webber Architects. Verify all dimensions and falls on site before construction and do not scale from drawing.