

# CATHERINE McAULEY CATHOLIC COLLEGE

## LANDSCAPE MASTER PLAN REPORT

Prepared for Catholic Schools Office - Diocese of Maitland Newcastle

**FOR SUBMISSION**



**ISSUE 4 - 30th May 2018**

ISSUE 1 - 29th March 2018

ISSUE 2 - 17th April 2018

ISSUE 3 - 15th May 2018

CATHERINE McAULEY CATHOLIC COLLEGE

PROJECT 1529 CATHERINE McAULEY  
Moir Landscape Architecture  
Issue 4 30th May 2018 for DA Submission

1

Contents

Report Summary	2
Project Context	3
Site Analysis	4
Design Principles	5
Landscape Master Plan	6
Planting Strategy	7
Access & Circulation	10
Wayfinding & Signage	11
Materials & Furnitures	12
Detail Plan 1 - Primary School	13
Detail Plan 2 - High School	14
Detail Plan 3 - Chapel	15
Detail Plan 4 - Early Learning Centre	16
Landscape Sections	17

Report Summary

The Landscape Master Plan Report has been prepared by Moir Landscape Architecture on behalf of the Catholic Schools Office. The report documents the proposal for the Catherine McAuley Catholic College and has been developed as a supporting document for the Development Application of this site.

The report aims to describe the landscape concept design and does not provide detailed landscape resolution. The concept master plan will examine and outline opportunities to incorporate the surrounding natural environment, architecture, landscape and art across the site. It is intended to provide a design proposal which will support future detailed and construction design.

Key overlays to the proposal have been mapped and described in this report and include the following:

- Planting Strategy
- Access Control
- Way-finding and Signage
- Materials and Furnitures

Detailed plans document the Primary School, High School, Chapel and Early Learning Centre. Sketch sections support these plans.

Prepared by Moir Landscape Architecture

Documented CX  
Checked by DM  
Approved by DM  
Studio 1, 68 Fern Street  
Postal Address PO Box 111  
Islington, NSW, 2296  
Phone No +61 2 4965 3500  
Fax No +61 2 4965 3555  
Email admin@moirla.com.au  
ABN 48 097 558 908  
ACN 097 558 908

# Project Context



CONTEXT PLAN NTS

## Description

The site is located at 507 Medowie Road, opposite the Pacific Dunes Golf Course and residential estate and is approximately 26.8 Ha in area.

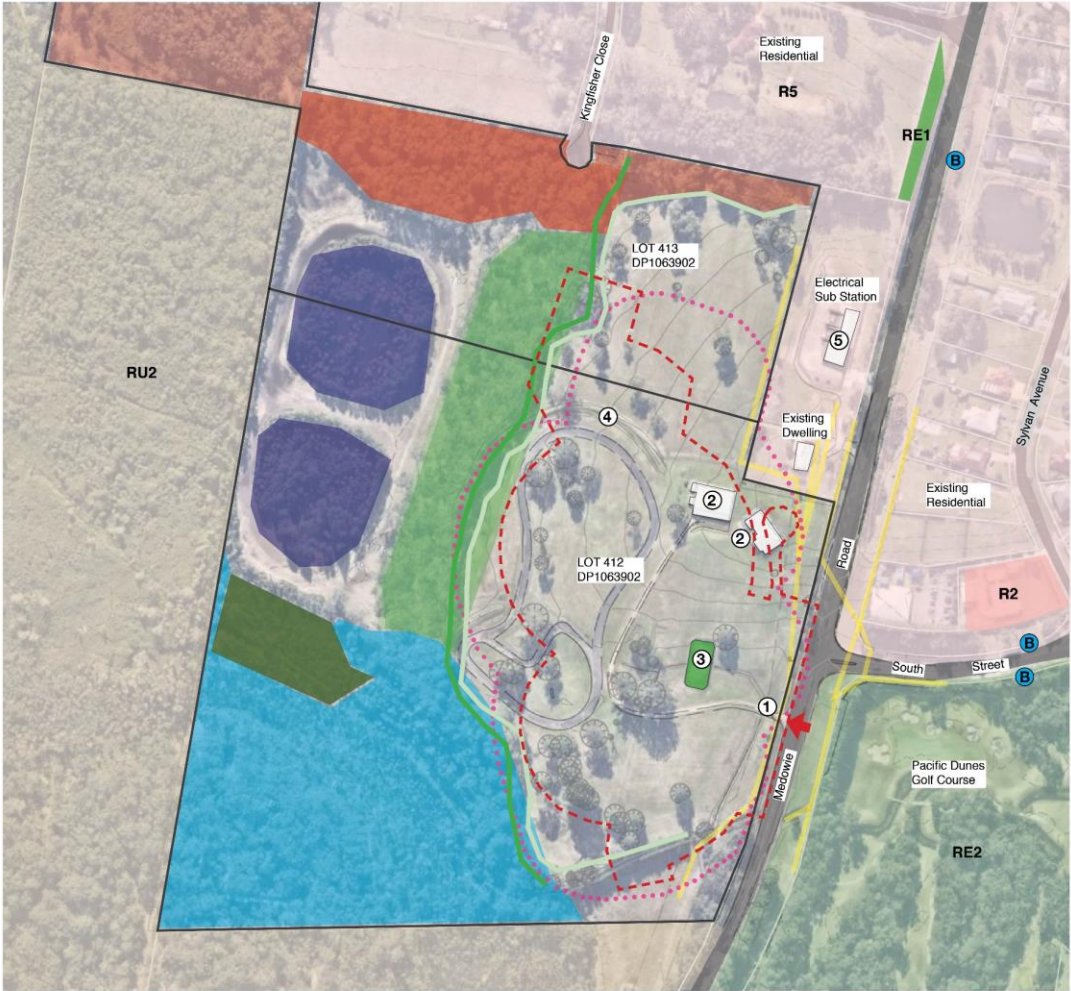
The master plan for the site includes the Catherine McAuley Catholic College, a new 7 to 12 co-educational seven stream secondary school, a new three stream primary school, a Chapel and an early learning centre.

## Legend

- Study area of site
- 5km Radius
- Major roads
- Secondary roads
- P Primary school
- H High school
- A Newcastle Airport



# Site Analysis



SITE ANALYSIS PLAN NTS



## Description

Analysis of the existing conditions and surroundings have been undertaken to ensure that the siting of new structures and landscape design is a site-specific response which embeds the new use carefully into the landscape.

The site is surrounded by Meadow Road to the east, an existing substation to the north east, rural residential lots to the north and low lying bushland / wetlands to the south and west.

Surrounding environment includes:

- SEPP 14 Wetland requirements
- Easements and clearances for the adjacent substation and power lines
- Likely upgrade of road intersection and road setbacks.
- Creek easement on southern boundary
- Vegetation edge and Hollow bearing trees

The land is zoned R2 low density residential and RU2 Rural Landscape.

Potential bush fire hazards were identified from Port Stephens Council bush fire prone mapping as occurring within the investigation area. The minimum Asset Protection Zone has been demonstrated on Site Analysis Plan refer to Bush fire Assessment Report.

The existing site consisted a house and industrial sized shed, tennis court, windmill and paved /unpaved access tracks. A power line easement also exists running north to south within the lot immediately adjacent to the east boundary.

## Legend

	Study area/ Lot Boundary	<b>Land Zoning</b>	
	Subject site		RU2 Rural landscape
	Power pole alignment		RE1 Public recreation
	Existing Vehicular Access		RE2 Private recreation
	Existing buildings		R2 Low Density Residential
	Existing tennis court		R5 Large Lot Residential
	Bus stop		(From PSC Local Environmental Plan 2013)
	Existing Edge of Vegetation		50m Asset protection zone
	Existing Trunk Line		Forest
			Woodland
			Riparian corridor
			Shrubland
			Forested wetland
			(From Bushfire Assessment Report)



Entry near South Street



Dwelling



Tennis court



Munition Store - Heritage Item



Electrical Substation



# Design Principles

## Context , Built Form & Landscape



Spatial Planning



Accessible Outdoor Seating



Durable Outdoor Learning Space

## Sustainable Environmental



Vegetable Garden



Seasonal Interests



Natural Environment

## Aesthetics & Amenity



Outdoor Playground



Planter with Seating



Outdoor Classroom



Barrier Fence with Window Box

## State Environmental Planning Policy (Educational Establishments and Child Care Facilities) 2017

### Principle 1—context, built form and landscape

Schools should be designed to respond to and enhance the positive qualities of their setting, landscape and Aboriginal cultural. The design and spatial organisation of buildings and the spaces between them should be informed by site conditions such as topography, orientation and climate.

### Principle 2—sustainable, efficient and durable

Good design combines positive environmental, social and economic outcomes. Schools and school buildings should be designed to minimise the consumption of energy, water and natural resources and reduce waste and encourage recycling.

### Principle 3—accessible and inclusive

School buildings and their grounds should provide good wayfinding and be welcoming, accessible and inclusive to people with differing needs and capabilities. Note. Wayfinding refers to information systems that guide people through a physical environment and enhance their understanding and experience of the space.

### Principle 4—health and safety

Good school development optimises health, safety and security within its boundaries and the surrounding public domain, and balances this with the need to create a welcoming and accessible environment.

### Principle 5—amenity

Schools should include appropriate, efficient, stage and age appropriate indoor and outdoor learning and play spaces, access to sunlight, natural ventilation, outlook, visual and acoustic privacy, storage and service areas.

### Principle 6—whole of life, flexible and adaptive

School design should consider future needs and take a whole-of-life-cycle approach underpinned by site wide strategic and spatial planning. Good design for schools should deliver high environmental performance, ease of adaptation and maximise multi-use facilities.

### Principle 7—aesthetics

The built form should respond to the existing or desired future context, particularly, positive elements from the site and surrounding neighbourhood, and have a positive impact on the quality and sense of identity of the neighbourhood.

(From NSW Legislation, current version for 15 Decemeber 2017 to date)

## Design Statement

Traditionally design always has been focused on the principles of surveillance and confinement of the students. Today however we know that a school's outdoor area plays a crucial role in students' development and well-being, learning attitude and interaction. Good physical surroundings can stimulate students to exercise, play and study.

The Early Learning Centre has students from 0 to 5-years-old. The outdoor play space focuses on amusement and creation. It utilises various hard and soft materials which can all be turned to playful uses. These will stimulate children's perception of the external environment.

Primary School students like to explore more about nature and science. The main schoolyard is framed by built school buildings. Thus between each building block the opportunity exists to connect with nature. Students and teachers can take the opportunity to hold outdoor classes in open lawn or informal seating areas. There is a Bush Tucker Garden for students' Aboriginal education program. Children are animated by different kinds of play. The outdoor play space encourages students to engage in a range of active movements. Active play is critical to children's physical and mental development.

High School's education and environment takes a crucial role in students' future life.

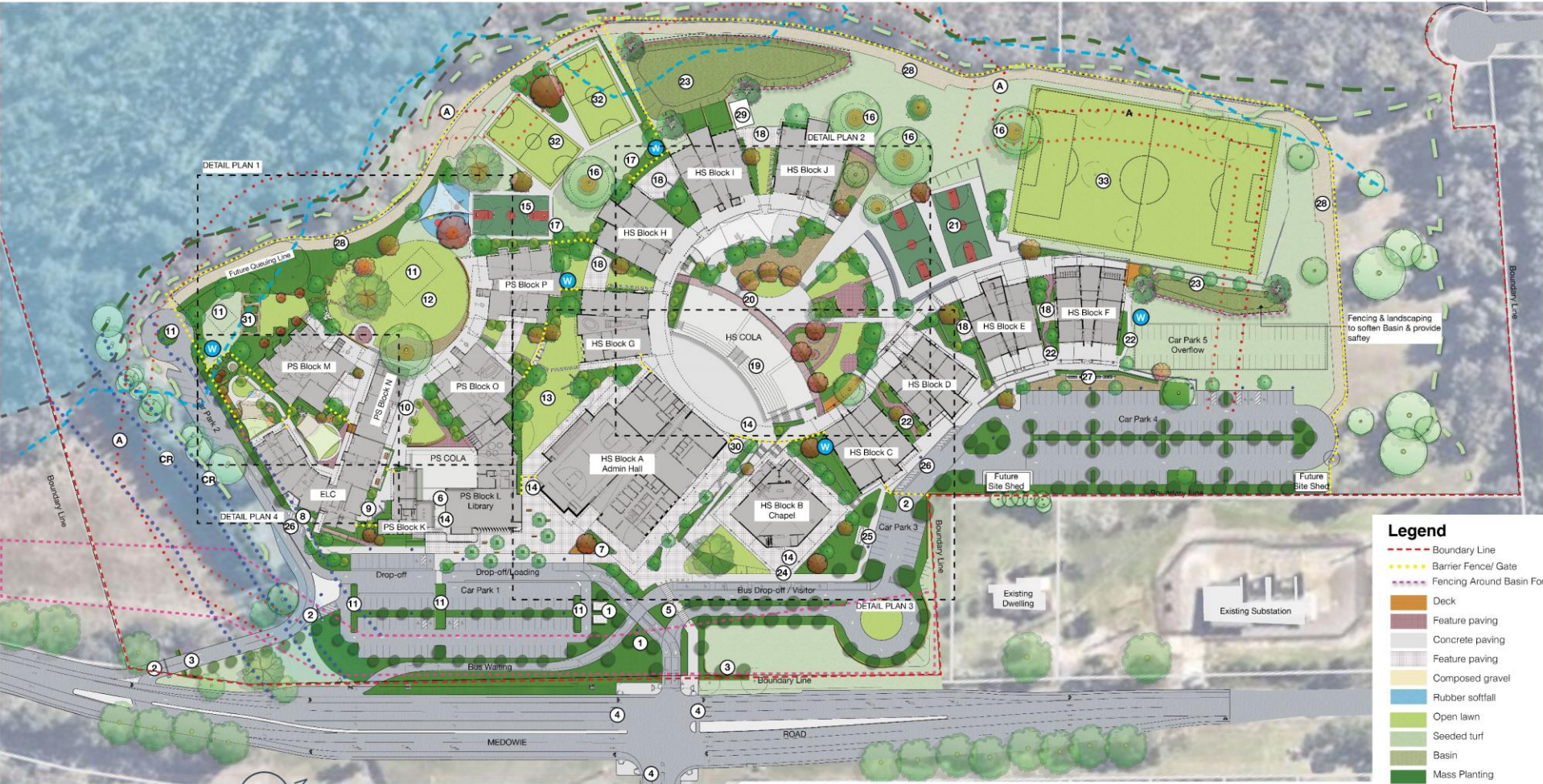
- Good communication and social life will develop students' optimistic personality.
- Physical exercises will build a healthy body.
- Safe and healthy surroundings will make for a positive learning environment and also discourage anti-social behaviour.

High School Central Court

The design concept is based on tiered seating and connecting each building block on both sides. The terrace, retaining wall and steps define different level of platforms, which act as various informal seating areas for outdoor learning and communication. Trees are planted along the circular form of surrounding corridors. Tree planting, lawn, natural garden and variety of surfacing make a natural and pleasant environment for students, teachers and school visitors.



# Landscape Plan



## LANDSCAPE MASTER PLAN



0 10 20 30 40 50 M

SOUTH STREET

- |  |                                    |   |   |  |                                |
|--|------------------------------------|---|---|--|--------------------------------|
| 1 Kiosk                                  | 7 McAuley Rose Garden              | 13 Intermediate Space for Flexible Use      | 19 High School Tiered Seating / COLA                              | 25 Gas Tank  | 31 Bush Tucker Garden          |
| 2 Traffic Gates                          | 8 Early Learning Centre Main Entry | 14 After-hours Hall Entry                   | 20 Covered Disabled Access Path ( 1 in 21)                        | 26 Loading Zone  | 32 Primary School Sports Field |
| 3 Overall Catholic Precinct Sign         | 9 Staff Breakout Area              | 15 Primary School Basketball Court          | 21 High School Basketball Court                                   | 27 Bicycle Parking   | 33 High School Sports Field    |
| 4 Pedestrian Crossing                    | 10 Green Avenue                    | 16 Existing tree with Playful Seating Above | 22 Pedestrian Access/ Disabled                                    | 28 Fire Trail  |                                |
| 5 Vehicular Block with Pedestrian Access | 11 Atlantis Drainage Underground   | 17 Primary School Natural Garden            | 23 Detention Basin  | 29 Greenhouse for 'Paddock to the Plate' (approx. 30sqm, detail refer to future) |                                |
| 6 Primary School Main Entry              | 12 Primary School Oval             | 18 High School Breakout Courtyard           | 24 Wedding/ Funeral Car Access with Removable Pedestrian Bollards | 30 High School Main Entry  |                                |

- SEPP 14 wetlands
- Creek Flood Line
- Creek Top of Bank
- Power lines
- 1:100 Year flood line
- 50m Asset Protection Zone
- Vegetation Trunk Line
- Vegetation Canopy Line

## Legend

- Boundary Line
- Barrier Fence/ Gate
- Fencing Around Basin For Safety
- Deck
- Feature paving
- Concrete paving
- Feature paving
- Composed gravel
- Rubber softfall
- Open lawn
- Seeded turf
- Basin
- Mass Planting
- Existing trees to be removed
- Existing trees to be retained
- Native evergreen trees
- Exotic deciduous trees
- Street tree planting (Carpark)
- Light Pole
- Water Tanks

# CATHERINE MCAULEY CATHOLIC COLLEGE

PROJECT 1529 CATHERINE MCAULEY  
Morr Landscape Architecture  
Issue 4 30th May 2018 for DA Submission



# Planting Strategy



EXISTING VEGETATION MAP

Vegetation Map (By Biosis, 06 March 2018)

- ..... Study area

- - - Subject site

⊕ Hollow-bearing tree

— Exotic Vegetation (Slash Pine)
- Swamp Sclerophyll Forest

Hunter Lowland Redgum Forest

PCT 1598 Forest Red Gum grassy open forest

PCT 1718 Swamp Mahogany – Flax leaved Paperbark swamp forest
- PCT 1564 Blackbutt - Rough-barked Apple - Turpentine - ferny tall open forest

PCT 1619 Smooth-barked Apple - Red Bloodwood - Brown Stringybark - Hairpin Banksia healthy open forest



## Description

Intact native vegetation occurs across the western section of the study area, whilst the eastern portion is largely cleared, with scattered remnants. Biosis confirmed four plant community types (PCTs) in varying condition and extent within the study area, including:

- PCT 1564 Blackbutt - Rough-barked Apple - Turpentine - ferny tall open forest of the Central Coast.
- PCT 1598 Forest Red Gum grassy open forest on floodplains of the lower Hunter.
- PCT 1619 Smooth-barked Apple - Red Bloodwood - Brown Stringybark - Hairpin Banksia healthy open forest of coastal lowlands.
- PCT 1718 Swamp Mahogany – Flax leaved Paperbark swamp forest on coastal lowlands of the Central Coast.

The shrub and mid layer is mostly absent in the study area except in PCT 1718 and PCT 1619 communities and the northern portion of PCT 1598.

The subject site is dominated by a cover of exotic pasture, with native vegetation restricted to small remnant patches. Some areas of exotic vegetation (mostly Slash Pine) dominate areas in the south-east of the study area. Slash Pine is to be removed by Arborist's suggestion.

Removal of vegetation has documented in the Arboricultural Impact Assessment Report.



Red Gum grassy open forest

- Canopy** - Eucalyptus resinifera, Eucalyptus tereticornis
- Shrub layer** - Breynia oblongifolia
- Groundcover** - Imperata cylindrica, Rytidosperma pallidum, Rytidosperma setaceum, Cynodon dactylon.



Swamp Mahogany – Flax leaved Paperbark swamp forest

- Canopy** - Eucalyptus robusta, Casuarina glauca, Melaleuca quinquenervia
- Shrub layer** - Acacia longifolia, Melaleuca linearifolia, Kennedia rubicunda
- Groundcover** - Blechnum cartilagineum, Calochlaena dubia, Entolasia stricta, Juncus prismatocarpus, Persicaria decipiens.



Blackbutt - Rough-barked Apple - Turpentine - ferny forest

- Canopy** - Eucalyptus pilularis, Angophora floribunda
- Shrub layer** - absent
- Groundcover** - Eragrostis brownii, Imperata cylindrica, Cynodon dactylon



Smooth-barked Apple - Red Bloodwood - Brown Stringybark - Hairpin Banksia forest

- Canopy** - Angophora costata, Eucalyptus tereticornis
- Shrub layer** - Acacia longifolia subsp. sophorae, Persoonia lanceolata
- Groundcover** - Common Couch, Dianella caerulea, Echinopogon caespitosus, Gahnia clarkii, Lomandra longifolia, Pomax umbellata, Pteridium esculentum, Trachymene incisa.



Exotic Vegetation

- Canopy** - Pinus radiata



# Planting Strategy



## PLANTING PLAN NTS



Terrace Garden



Informal Planting with Meadow Garden



Breakout Area



Rain Garden



Formal Entry Garden



# Planting Palatte



## PLANTING PLAN NTS

- Over-run lawn - native species
- Seeded turf
- Breakout area planting
- Formal entry garden
- Terrace garden
- Informal planting with meadow garden
- Detention basin
- ELC planting
- Carpark planting

## Native Evergreen Trees



## Exotic Deciduous Trees



## Planting Schedule

TYPE	BOTANIC NAME	COMMON NAME	POT SIZE
Trees (Upper Bank)	Eucalyptus robusta	swamp mahogany	75L
	Melaleuca ericifolia	Swamp paperbark	75L
	Acacia longifolia	Golden Wattle	75L
	Angophora costata	Smooth Barked Apple	75L
	Callistemon citrinus	Crimson Bottlebrush	200mm
Shrubs/Grasses (Upper Bank)	Acacia myrtifolia	Myrtle Wattle	200mm
	Banksia spinulosa	Hairpin Banksia	200mm
	Carex inversa	Knob Sedge	50mm Tubestock
	Juncus ustulatus	Common Rush	50mm Tubestock
	Schoenoplectus validus	River Club-rush	50mm Tubestock
	Baumea articulata	Jointed Rush	50mm Tubestock
	Elaeocarpus reticulatus	Blueberry Ash	75L
	Waterhousea floribunda 'Green Avenue'	Weeping Lily Pilly	75L
	Magnolia grandiflora 'Exmouth'	Bull Bay Magnolia	75L
	Jacaranda mimosifolia	Jacaranda	125L
Shrubs/Ground covers/Grasses	Callistemon hybridus	Bottlebrush	200mm
	Syzygium 'Cascade'	Lilly Pilly	200mm
	Acacia myrtifolia	Myrtle Wattle	200mm
	Anthopodium cinnatum	Mattaponi Bay Lily	140mm
	Acacia cognata 'Lime light'	Dwarf Acacia	140mm
	Myoporum parvifolium	Creeping Boobialla	140mm
	Dianella caerulea	Flax Lily	50mm Tubestock
	Lomandra 'Tanika'	Mat Rush	50mm Tubestock
	Carex inversa	Knob Sedge	50mm Tubestock
	Juncus ustulatus	Common Rush	50mm Tubestock
Grasses	Schoenoplectus validus	River Club-rush	50mm Tubestock
	Baumea articulata	Jointed Rush	50mm Tubestock

(species may include, but not limited to)

Exotic Species

## Planting Schedule

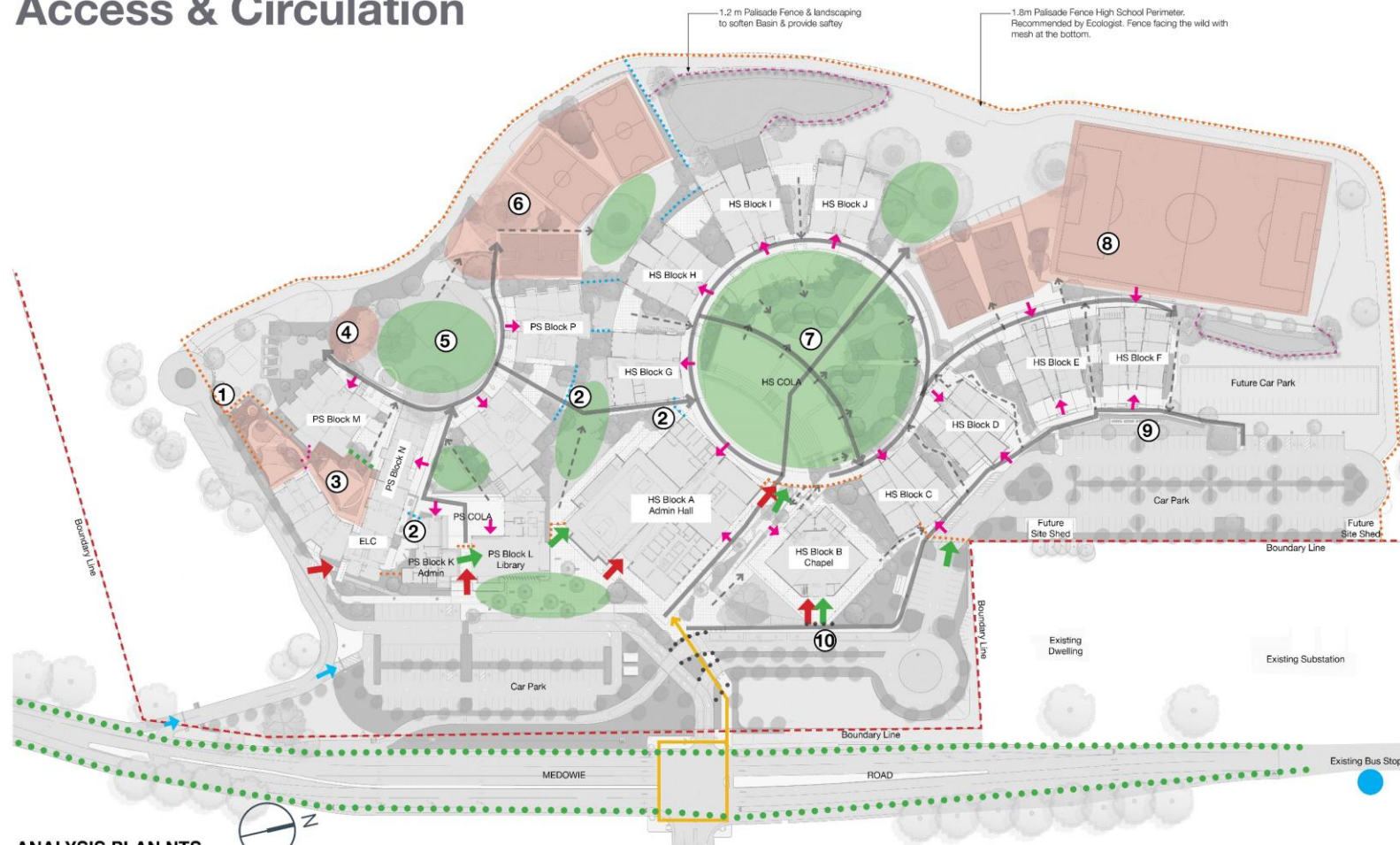
TYPE	BOTANIC NAME	COMMON NAME	POT SIZE
Trees	Ficus microcarpa var. hillii	Hill's Weeping Fig	125L
	Corymbia ficifolia	Red Flowering Gum	75L
	Cupaniopsis anacardioides	Tuckeroo	75L
	Hymenosporum flavum	Native Frangipani	75L
	Jacaranda mimosifolia	Jacaranda	125L
	Magnolia grandiflora 'Little Gem'	Little Gem Magnolia	75L
	Liquidambar styraciflua	Sweet gum	75L
	Westringia fruticosa	Coastal Rosemary	140mm
	Hardenbergia violacea	Purple Coral Pea	200mm
	Gardenia jasminoides	Cape Jasmine	140mm
Shrubs/Ground covers	Syzygium 'Cascade'	Lilly Pilly	140mm
	Pimelea linifolia	Slender Rice Flower	140mm
	Doodia aspera	Prickly Rasp Fern	140mm
	Agapanthus africanus	African Lily	140mm
Trees	Melaleuca quinquenervia	Flax Leaved Paperbark	75L
	Lophostemon confertus	Brush Box	75L
	Tristanopsis laurina	Water Gum	75L
	Elaeocarpus reticulatus	Blueberry Ash	75L
	Cupaniopsis anacardioides	Tuckeroo	75L
	Pryus calleryana 'Chanticleer'	Flowering Ornamental Pear	75L
	Liquidambar styraciflua	Sweet gum	75L
	Westringia fruticosa	Coastal Rosemary	140mm
	Acmena smithii 'Alyn Magic'	Dwarf Lily Pilly	140mm
	Myoporum parvifolium	Creeping Boobialla	140mm
Shrubs/Ground covers	Doronicum excolia	Gymea Lily	140mm
	Hymenocallis littoralis	spider lily	140mm
	Agapanthus africanus	African Lily	140mm
Trees	Ficus microcarpa var. hillii	Hill's Weeping Fig	125L
	Corymbia ficifolia	Red Flowering Gum	75L
	Waterhousea floribunda 'Green Avenue'	Weeping Lily Pilly	75L
	Bauhinia variegata	Orchid Tree	75L
	Lagerstroemia indica	Crepe Myrtle	75L
Shrubs/Ground covers	Syzygium 'Cascade'	Lilly Pilly	200mm
	Trachelospermum jasminoides	Star Jasmine	140mm
	Pimelea ferruginea	Rice Flower Snowball	140mm
	Xerochrysum bracteatum	Golden Everlasting Daisy	140mm
	Anthopodium cinnatum	Mattaponi Bay Lily	140mm
Meadow	Poa 'Kingsdale'	50mm Tubestock	
	Imperata cylindrica	Bladey Grass	50mm Tubestock
	Poa 'Exdale'	50mm Tubestock	
	Ficinia nodosa	Knobby Club Rush	50mm Tubestock
	Pennisetum 'Cream Lea'	50mm Tubestock	
	Danthonia species	Wallaby Grasses	50mm Tubestock
	Verbena bonariensis	Tall verbena	50mm Tubestock
	Miscanthus oligostachyus 'Eileen Quin'	Miscanthus 'Eileen Quin'	50mm Tubestock
Trees	Cupaniopsis anacardioides	Tuckeroo	75L
	Bauhinia variegata	Orchid Tree	45L
	Citrus reticulata	Mandarin Orange	45L
Low shrubs/ Ground covers	Gardenia jasminoides	Cape Jasmine	140mm
	Pittosporum 'Miss Muffet'	Dwarf Pittosporum	140mm
	Hardenbergia violacea	Purple Coral Pea	140mm
	Westringia fruticosa	Coastal Rosemary	140mm
	Phormium tenax 'Jester'	Jester Flax	140mm
	Dianella caerulea	Flax Lily	50mm Tubestock
	Dietes grandiflora	Fairy Iris	50mm Tubestock
	Pennisetum 'Naiway'	Naiway	50mm Tubestock
Trees	Cupaniopsis anacardioides	Tuckeroo	75L
	Callistemon hybridus	Bottlebrush	75L
	Plumeria alba	Frangipani	75L
	Magnolia grandiflora 'Little Gem'	Little Gem Magnolia	75L
	Pryus calleryana 'Chanticleer'	Flowering Ornamental Pear	75L
Shrubs/Ground covers/Grasses	Syzygium 'Cascade'	Lilly Pilly	200mm
	Hymenosporum flavum 'Gold Nugget'	Native Frangipani	200mm
	Callistemon citrinus	Crimson Bottlebrush	200mm
	Agapanthus africanus	African Lily	140mm
	Lomandra 'Tanika'	Mat Rush	140mm
	Myoporum parvifolium	Creeping Boobialla	140mm
	Dianella caerulea	Flax Lily	50mm Tubestock
	Brabeja muscari 'evergreen giant'	Evergreen Giant	50mm Tubestock

(species may include, but not limited to)

Exotic Species



# Access & Circulation



## ANALYSIS PLAN NTS



- |   |                                   |   |  |
|---|-----------------------------------|---|--|
| ① | ELC Maintenance Gate              | ⑥ | Primary School Playground & Sports Field                       |
| ② | Access Gate                       | ⑦ | High School Covered COLA & Outdoor Learning Area               |
| ③ | ELC Outdoor Playground            | ⑧ | High School Sports Field                                       |
| ④ | Primary School Natural Play Space | ⑨ | Bike Parking   |
| ⑤ | Primary School Oval               | ⑩ | Wedding/ Funeral Car Access with Removable Pedestrian Bollards |



1.8m Palisade Fence



1.2m Iron Fence with Stone Columns



2.4m Fence with Window Boxes (ELC)



0.9m Timber Fence (ELC)



Concrete Bollards for Vehicular Access Block



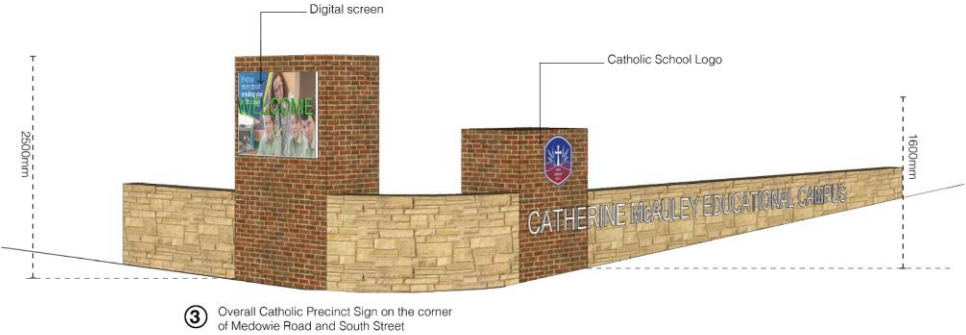
# Way-finding and Entry Signage



## Way-finding Signage

Way-finding provides clear guidance to visitors to the site on approach from Medowie Road. It is intended that the form and materials are consistent with scale, materials and approach to quality as the development itself.

- Overall Catholic Precinct sign
- Vehicular Wayfinding
- Pedestrian Directory & Wayfinding
- Early Learning Centre Sign





# Materials and Finishes

## Description

The materials and finishes of the landscape intend to be durable, resilient and adaptable, enabling them to evolve over time to meet future requirements.

## Pavement



Asphalt



Concrete Oxide - Two tones to break up scale of pavement



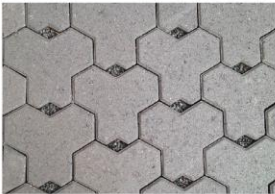
Stabilised Gravel Path



Outdoor Decking



Concrete Decking



Permeable Paving



Fine Grain Paving Detail



Rubber Softfall



Linear Pavement Markers in Pavement



Linear Pavement Markers in Concrete



Crazy Stone Paving



Timber Stepping Logs

## Outdoor Furniture



Raised Garden Bed with Seating



Planter with back seating



Concrete Table Setting



Timber Seating



Concrete Edging and Seating



# Detail Plan 1 - Primary School



## Legend

- Barrier Fence with Gate
- Deck
- Feature paving
- Concrete paving
- Feature paving
- Composed gravel
- Rubber soffit
- Open lawn
- Seed turf
- Mass Planting
- Existing trees to be removed
- Existing trees to be retained
- Native evergreen trees
- Exotic deciduous trees
- Proposed Orchid trees
- Water Tanks
- 1 Bush Tucker Garden
- 2 Informal Garden
- 3 Rubber Play Mound & trampoline
- 4 Nature Play Area
- 5 Atlantis Drainage Underground
- 6 Green Avenue
- 7 Timber Balance with Stepping Logs
- 8 Circular Seating Area
- 9 Existing Tree with Playful Seating
- 10 Sandstone Seating Wall
- 11 Climbing Equipment
- 12 Shade Sails
- 13 Primary School Basketball Court
- 14 Primary School Outdoor Play Space
- 15 Access Gate
- 16 Informal Seating Area
- 17 After-hours Entry Gate
- 18 Early Learning Centre Outdoor Playspace (refer to Detail Plan 4)
- 19 Intermediate Space for Flexible Use
- 20 Proposed Tree with Playful Seating



Bush Tucker Garden



Planting along the edge of lawn



Outdoor Playground



Detail Plan 2 - High School





# Detail Plan 3 - Chapel & Carpark Access



## Legend

- Barrier Fence with Gate
- Deck
- Feature paving
- Concrete paving
- Feature paving
- Composed gravel
- Rubber soffitall
- Open lawn
- Seed turf
- Mass Planting

- Existing trees to be removed
- Existing trees to be retained
- Native evergreen trees
- Exotic deciduous trees
- Light Pole
- Water Tanks

- 1 Entry Plaza with Seating
- 2 MaAuley Rose Garden with Seating
- 3 Retaining Wall with Signage
- 4 High School Main Entry
- 5 Concrete Bollards for Vehicular Access Block
- 6 After-hours Access Gate
- 7 Outdoor Seating associated with Cafe
- 8 Disabled Ramp to Access Chapel (1 in 21)
- 9 Bench Seating
- 10 Wedding / Funeral Car Access with Removable Bollards
- 11 Gas Tank
- 12 Terrace Garden
- 13 Stairs Access to Upper Level
- 14 Intermediate Space for Flexible Use
- 15 Traffic Gate
- 16 Primary School Main Entry
- 17 Atlantis Drainage Underground
- 18 Sandstone Retaining Wall



Accessible Outdoor Seating



Raised Planter with Seating



Sandstone Retaining Wall

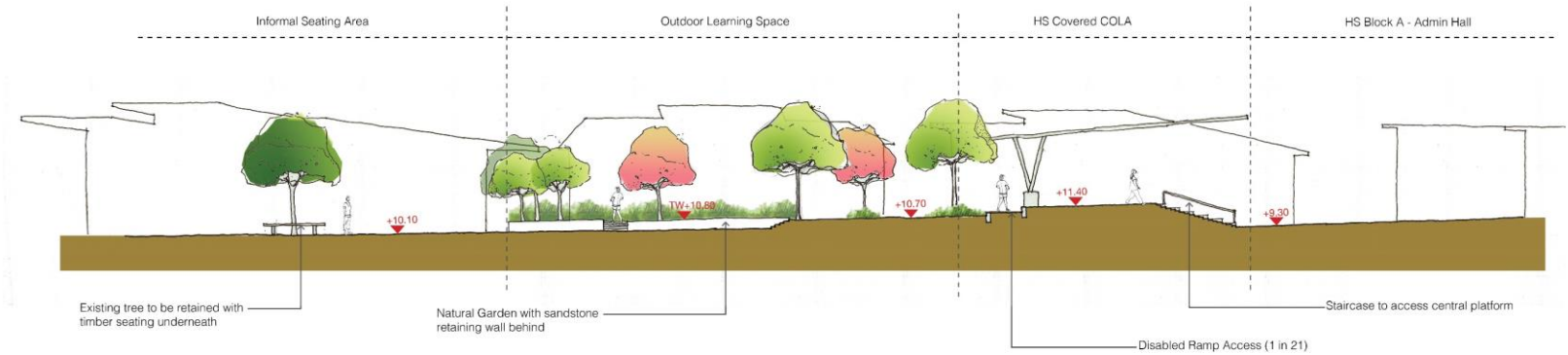


# Detail Plan 4 - Early Learning Centre

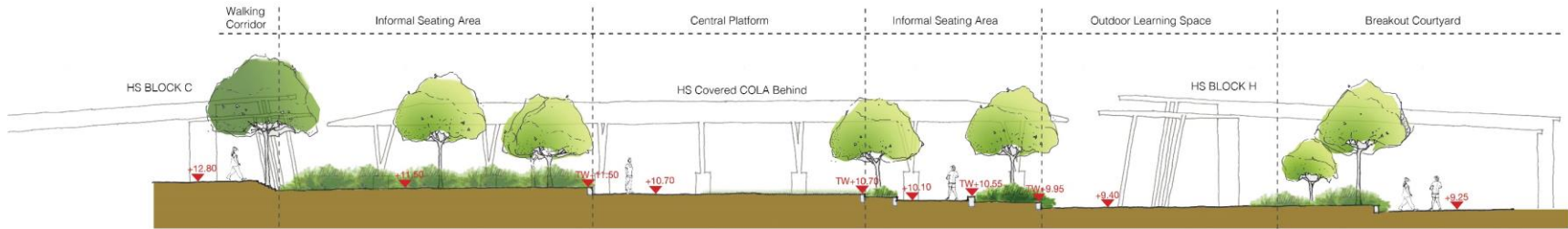




# Landscape Sections



Section AA - High School COLA



Section BB - High School COLA