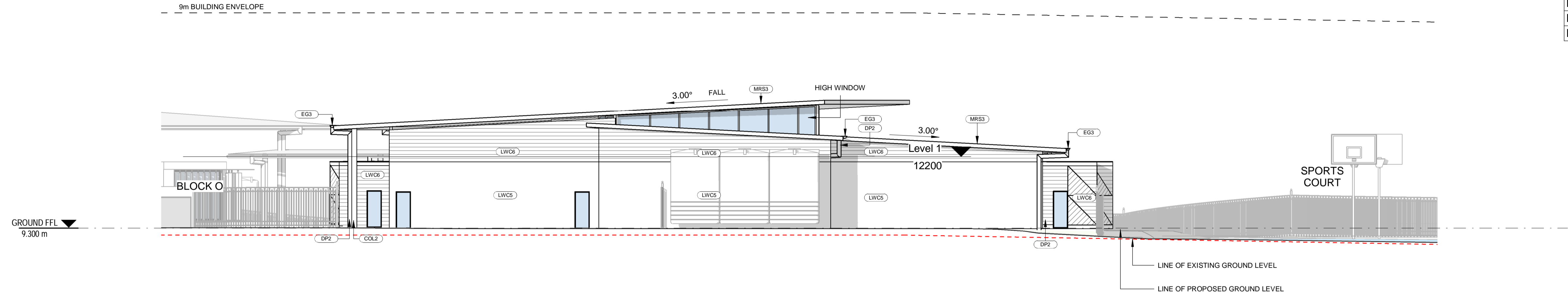
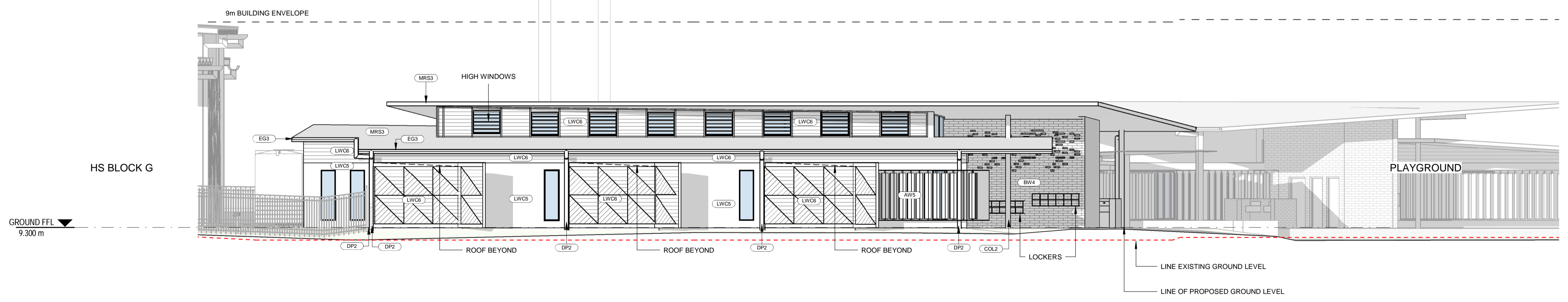


ABBREVIATION	
AW5	AWNING - TYPE 5
BW4	BRICK WALL - TYPE 4
COL2	COLUMN - TYPE 2
DP2	DOWNPIPE - TYPE 2
DP3	DOWNPIPE - TYPE 3
EG2	EAVES GUTTER - TYPE 2
EG3	EAVES GUTTER - TYPE 3
FHR	FIRE HOSE REEL
LWC5	LIGHT WEIGHT CLADDING - TYPE 5
LWC6	LIGHT WEIGHT CLADDING - TYPE 6
MAT	RECESSED DOOR MAT
MRC	METAL ROOF CAPPING
MRS3	METAL ROOF SHEETING - TYPE 3
MRS4	METAL ROOF SHEETING - TYPE 4

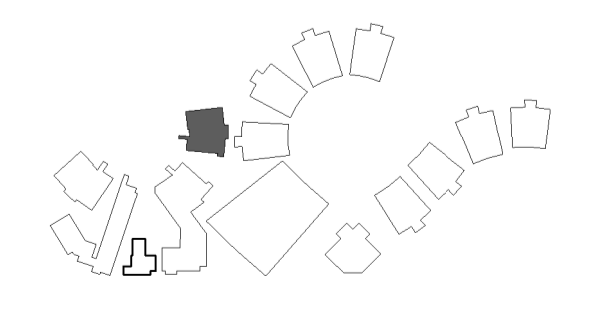


**3 ELEVATION 3**  
03\_1601 SCALE 1:100



**4 ELEVATION 4**  
03\_1601 SCALE 1:100

**LOCATION PLAN**



REV	DATE	DESCRIPTION	BY	CHK
A	16.02.2018	DEVELOPED DESIGN - 90%	SR	
B	09.03.2018	FOR GA	ME	
C	29.03.2018	FOR CLIENT APPROVAL	SR	LK
D	15.05.2018	FOR DEVELOPMENT APPROVAL	CH	

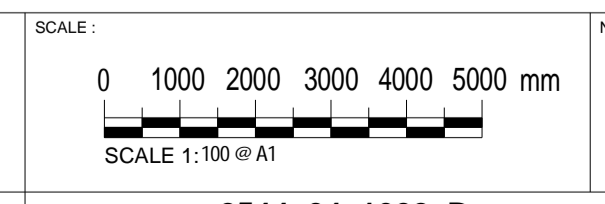


**webberarchitects**  
commercial and residential  
Suite 3, Level 1 498 Hunter St Newcastle • PO Box 807 The Junction 2291  
Tel: +612 4924 1078 • Fax: 4924 1078  
newcastle@webberarchitects.com • www.webberarchitects.com

Directors: Jill Webber (Principal Architect) AIA, NSW AHS NO. 8930  
Sandra Strachan, Karen Brooks  
Associate Directors: Tim Hayes  
Associates: Luke Keating

**ELEVATIONS - BLOCK P - 02**  
**PRIMARY SCHOOL**  
CATHERINE MCAULEY CATHOLIC COLLEGE  
507 MEDOWIE ROAD, MEDOWIE, NSW

ISSUED:  
**FOR DA APPROVAL**  
**NOT FOR CONSTRUCTION**



NORTH: