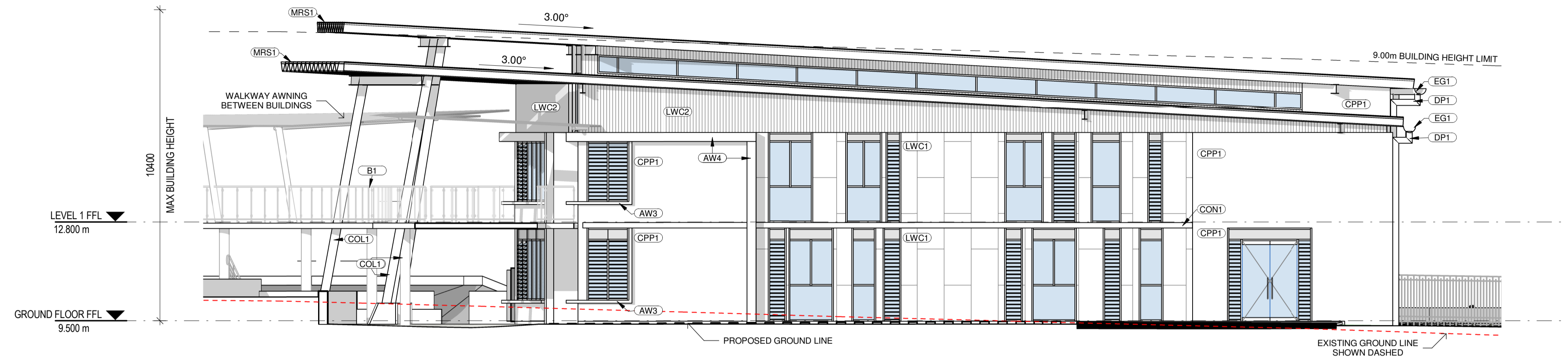
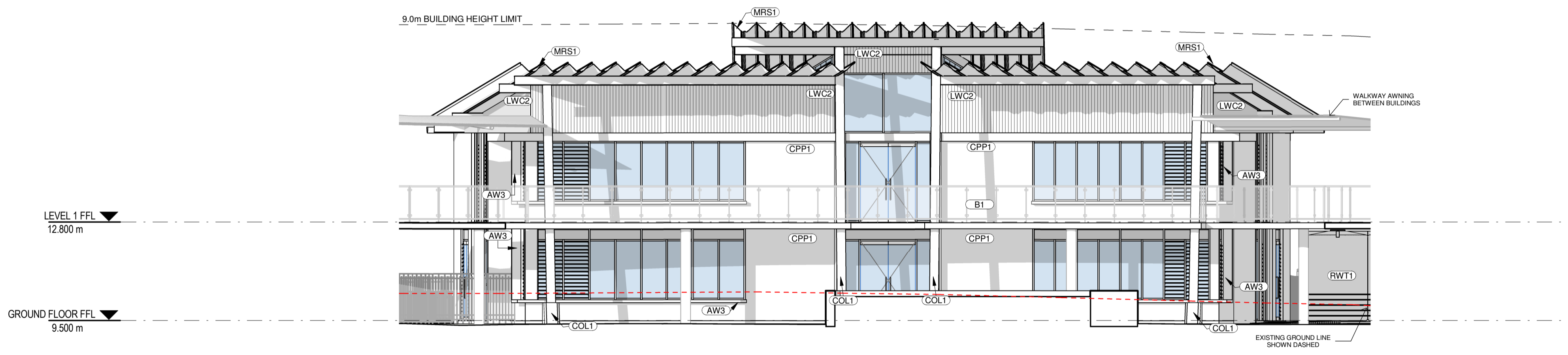


ABBREVIATIONS

AW1	AWNING - TYPE 1
AW3	AWNING - TYPE 3
AW4	AWNING - TYPE 4
B1	BALUSTRADE - TYPE 1
B2	BALUSTRADE - TYPE 2
COL1	COLUMN - TYPE 1
COL3	COLUMN - TYPE 3
CON1	CONCRETE - TYPE 1
CPP1	CONCRETE PRECAST PANEL - TYPE 1
DP1	DOWNPIPE - TYPE 1
EG1	EAVES GUTTER - TYPE 1
LWC1	LIGHT WEIGHT CLADDING - TYPE 1
LWC2	LIGHT WEIGHT CLADDING - TYPE 2
MRS1	METAL ROOF SHEETING - TYPE 1
MRS2	METAL ROOF SHEETING - TYPE 2
PAV1	PAVING - TYPE 1
PAV2	PAVING - TYPE 2
PPB1	PAINTED PLASTERBOARD - TYPE 1
RWT1	RAIN WATER TANK - TYPE 1
S1	SCREEN - TYPE 1
TFB1	TIMBER FLOOR BOARDS - TYPE 1

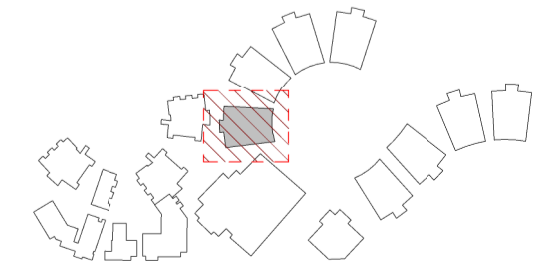


1 ELEVATION 1
02_01 SCALE 1:100



2 ELEVATION 2
02_01 SCALE 1:100

LOCATION PLAN



REV	DATE	DESCRIPTION	BY	CHK
A	28.08.2017	FOR PIC MEETING	CH	
B	05.12.2017	FOR PIC MEETING	PS	
C	16.01.2018	FOR STAKEHOLDER MEETING	CH	
D	16.02.2018	DEVELOPED DESIGN - 90%	CH	
E	09.03.2018	FOR DA	CH	
F	29.03.2018	FOR CLIENT APPROVAL	CH	TH
G	15.05.2018	FOR DEVELOPMENT APPROVAL	CH	

BUILDER TO CONFIRM ALL DETAILS, SETOUTS (TILE, ETC.), FALLS & CONNECTIONS ON SITE BEFORE CONSTRUCTION

PRINT DATE: 16-May-18 4:35:19 PM

FILE PATH: C:\Users\Daniel\Documents\2544 Medowie_High_School_Block_G - Library_GPLA_daniel-foreman.rvt



webberarchitects
commercial and residential

141 + 612 4226 1078
newcastle@webberarchitects.com • www.webberarchitects.com

Directors: Jill Webber (Chartered Architect), Ash Nelson (Architect)
Associate Directors: Sarah Wray, Karen Brooks
Associates: Luke Keating

ELEVATIONS - BLOCK G - 01

HIGH SCHOOL
CATHERINE MCAULEY CATHOLIC COLLEGE
507 MEDOWIE ROAD

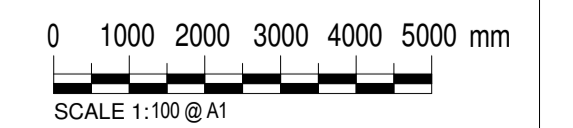
ISSUED:

FOR DA APPROVAL

NOT FOR CONSTRUCTION

PROJECT COMMENCEMENT DATE: 01.05.2017

SCALE:



NORTH:

SHEET NUMBER: **2544_04_0701_G**

This drawing and the design expressed are copyright and remain the property of Webber Architects. In accordance with the commonwealth copyright act 1968 this drawing and design in whole or part may not be used unless licensed by Webber Architects. Verify all dimensions and falls on site before construction and do not scale from drawing.