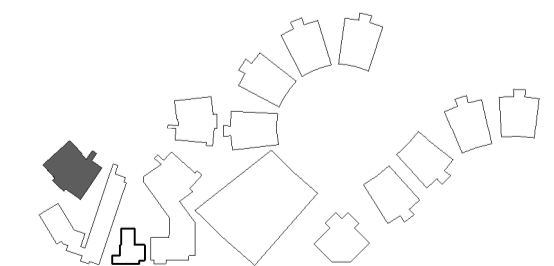


ABBREVIATION	
AW5	AWNING - TYPE 5
BW2	BRICK WALL - TYPE 2
COL2	COLUMN - TYPE 2
COL3	COLUMN - TYPE 3
DP2	DOWNPIPE - TYPE 2
DP3	DOWNPIPE - TYPE 3
EG2	EAVES GUTTER - TYPE 2
EG3	EAVES GUTTER - TYPE 3
FHR	FIRE HOSE REEL
GD	GRATED DRAIN
LWC4	LIGHT WEIGHT CLADDING - TYPE 4
LWC5	LIGHT WEIGHT CLADDING - TYPE 5
LWC6	LIGHT WEIGHT CLADDING - TYPE 6
MAT	RECESSED DOOR MAT
MRC	METAL ROOF CAPPING
MRS3	METAL ROOF SHEETING - TYPE 3
MRS4	METAL ROOF SHEETING - TYPE 4



**1 FLOOR PLAN - BLOCK M**  
SCALE 1:100

**LOCATION PLAN**



REV	DATE	DESCRIPTION	BY	CHK
A	16.02.2018	DEVELOPED DESIGN - 90%	SR	SR
B	09.03.2018	FOR GA	HE	HE
C	29.03.2018	FOR CLIENT APPROVAL	SR	LK
D	15.05.2018	FOR DEVELOPMENT APPROVAL	CH	CH



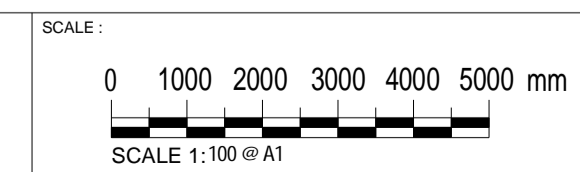
**webberarchitects**  
commercial and residential

Suite 3, Level 1 456 Hunter St Newcastle • PO Box 807 The Junction 2291  
t 41 4 412 4 224 1 978 • m 41 412 4 224 1 978  
newcastle@webberarchitects.com • www.webberarchitects.com

Director: Jill Webber (Chartered Architect, AIA, NSW AIB NO. 9830)  
Associate Director: Sarah Wray, Kerrie Brooks  
Associates: Tim Hayes, Luke Keating

**FLOOR PLAN - BLOCK M - GROUND**  
**PRIMARY SCHOOL**  
CATHERINE MCAULEY CATHOLIC COLLEGE  
507 MEDOWIE ROAD, MEDOWIE, NSW

ISSUED:  
**FOR DA APPROVAL**  
**NOT FOR CONSTRUCTION**



PROJECT COMMENCEMENT DATE: 01.05.2017  
SHEET NUMBER: **2544\_CD\_03\_1301\_D**