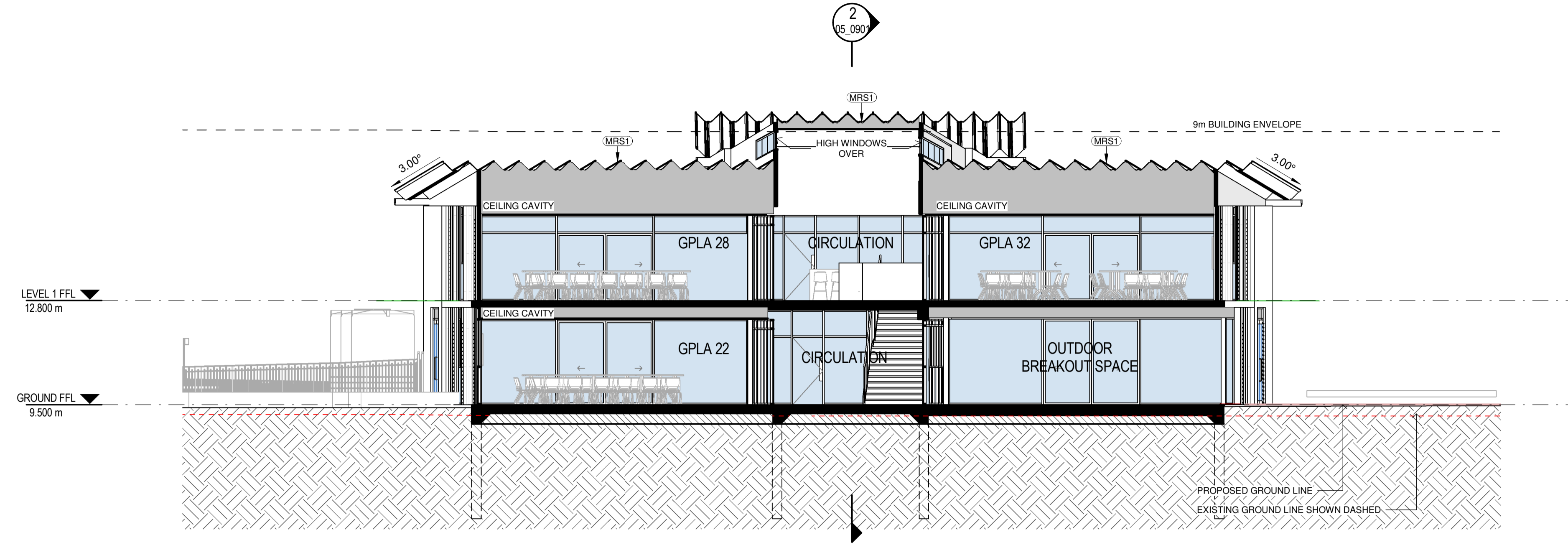
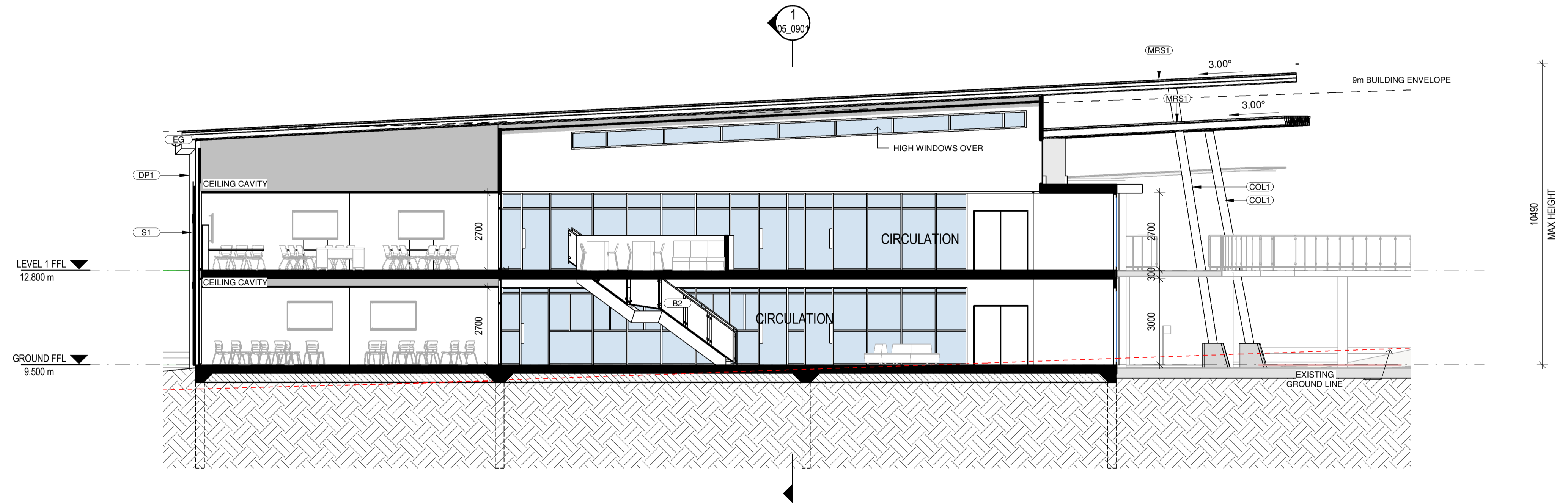


ABBREVIATIONS	
AW2	AWNING - TYPE 2
AW3	AWNING - TYPE 3
AW4	AWNING - TYPE 4
B1	BALUSTRADE - TYPE 1
B2	BALUSTRADE - TYPE 2
COL1	COLUMN - TYPE 1
CON1	CONCRETE - TYPE 1
CPP1	CONCRETE PRECAST PANEL - TYPE 1
DP1	DOWNPIPE - TYPE 1
EG	EAVES GUTTER
LWC1	LIGHT WEIGHT CLADDING - TYPE 1
LWC2	LIGHT WEIGHT CLADDING - TYPE 2
MRS1	METAL ROOF SHEETING - TYPE 1
MRS2	METAL ROOF SHEETING - TYPE 2
PAV2	PAVING - TYPE 2
RWT1	RAIN WATER TANK - TYPE 1
S1	SCREEN - TYPE 1

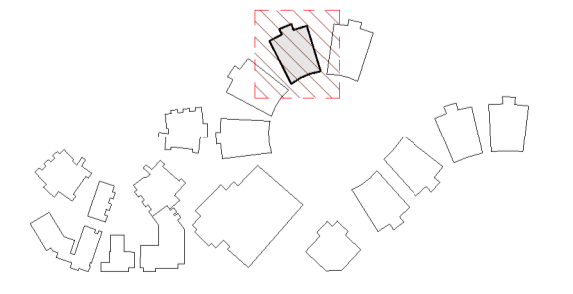


1 SECTION 1
02_01 SCALE 1:100



2 SECTION 2
02_01 SCALE 1:100

LOCATION PLAN
SCALE 1:5000



REV	DATE	DESCRIPTION	BY	CHK
A	16.02.2018	DEVELOPED DESIGN - 90%	RH	
B	09.03.2018	FOR GA	CH	
C	29.03.2018	FOR CLIENT APPROVAL	RH	TH
D	15.05.2018	FOR DEVELOPMENT APPROVAL	CH	

BUILDER TO CONFIRM ALL DETAILS, SETOUTS (TILE, ETC.), FALLS & CONNECTIONS ON SITE BEFORE CONSTRUCTION

PRINT DATE: 17/05/2018 5:11:01 PM FILE PATH: C:\Users\luka\Documents\2544 Medowie_High School Block 1 - GPLA_Luka\F_ISQ.rvt



webberarchitects
commercial and residential

141 - 812 4 226 1 07 8
newcastle@webberarchitects.com www.webberarchitects.com

Director: Jill Webber (International Architects A/NZ No. 488 962 803)
Senior Architect: Sarah Wray, Karen Brooks
Associate Director: Tim Hayes
Architect: Luke Keating

SECTIONS - BLOCK 1 - 01
HS GPLA
CATHERINE MCAULEY CATHOLIC COLLEGE
507 MEDOWIE ROAD, MEDOWIE, NSW

ISSUED:
FOR DA APPROVAL
NOT FOR CONSTRUCTION

SCALE: 0 1000 2000 3000 4000 5000 mm
SCALE 1:100 @ A1

NORTH:

PROJECT COMMENCEMENT DATE: 01.05.2017 SHEET NUMBER: **2544_05_0901_D**

This drawing and the design expressed are copyright and remain the property of Webber Architects. In accordance with the commonwealth copyright act 1968 this drawing and design in whole or part may not be used unless licensed by Webber Architects. Verify all dimensions and falls on site before construction and do not scale from drawing.