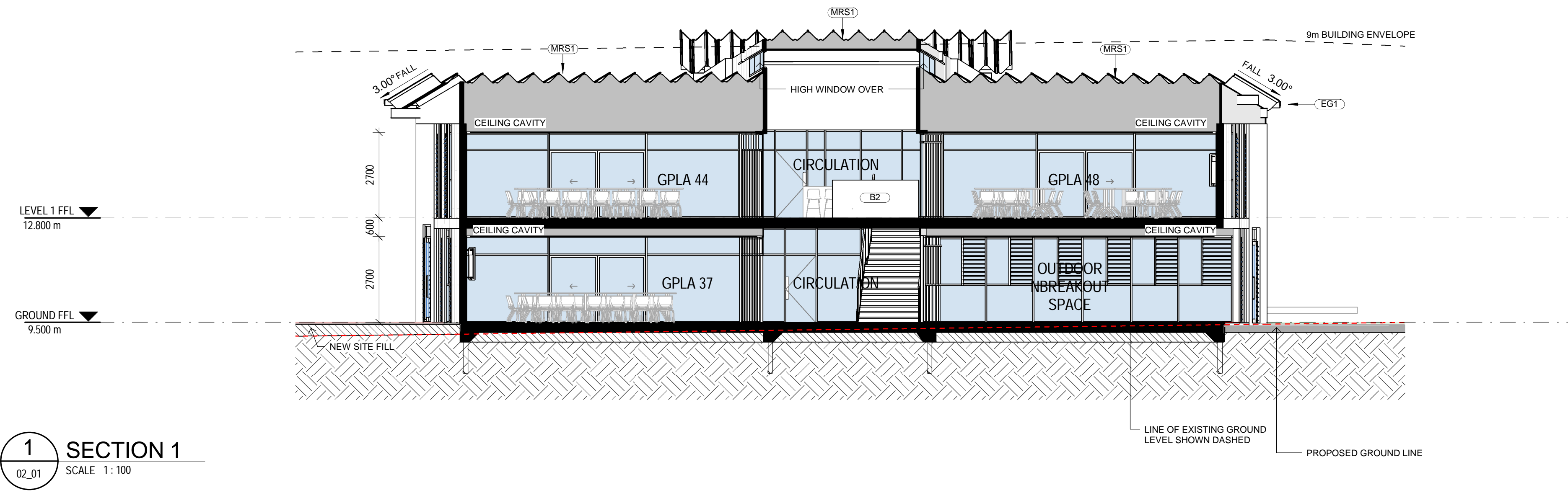
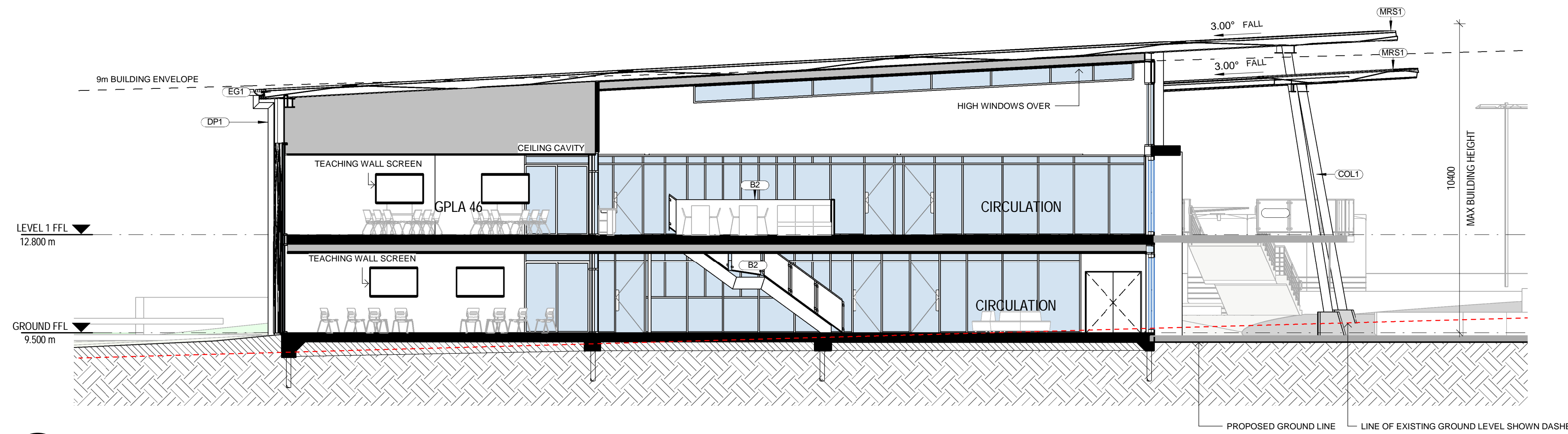


ABBREVIATIONS

AW2	AWNING - TYPE 2
AW3	AWNING - TYPE 3
AW4	AWNING - TYPE 4
B1	BALUSTRADE - TYPE 1
B2	BALUSTRADE - TYPE 2
COL1	COLUMN - TYPE 1
COL3	COLUMN - TYPE 3
CON1	CONCRETE - TYPE 1
CPP1	CONCRETE PRECAST PANEL - TYPE 1
DP1	DOWNPIPE - TYPE 1
EG1	EAVES GUTTER - TYPE 1
LWC1	LIGHT WEIGHT CLADDING - TYPE 1
LWC2	LIGHT WEIGHT CLADDING - TYPE 2
MRS1	METAL ROOF SHEETING - TYPE 1
MRS2	METAL ROOF SHEETING - TYPE 2
PAV2	PAVING - TYPE 2
S1	SCREEN - TYPE 1

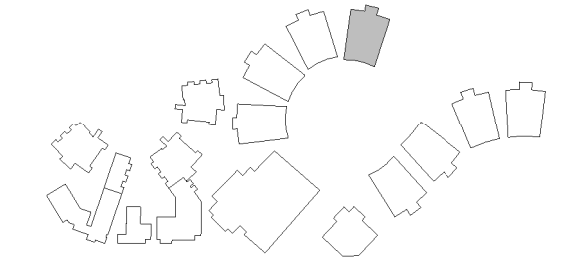


1 SECTION 1
02_01 SCALE 1:100



2 SECTION 2
02_01 SCALE 1:100

LOCATION PLAN



REV	DATE	DESCRIPTION	BY	CHK
A	16.01.2018	FOR STAKEHOLDER MEETING	ME	
B	25.01.2018	DESIGN REVIEW	ME	
C	16.02.2018	DEVELOPED DESIGN - 90%	ME	
D	09.03.2018	FOR QA	ME	
E	29.03.2018	FOR CLIENT APPROVAL	ME	TH
F	15.05.2018	FOR DEVELOPMENT APPROVAL	CH	

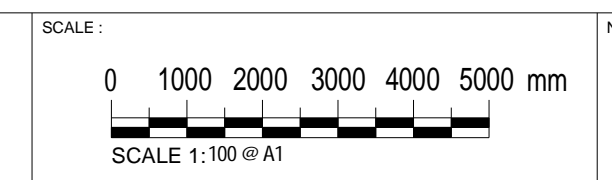


webberarchitects
commercial and residential
Suite 3, Level 1 456 Hunter St Newcastle • PO Box 807 The Junction 2291
t 41 4 812 4226 f 078 newcastle@webberarchitects.com www.webberarchitects.com

Director: Jill Webber (International Architect) AIA, NZIA, AIA, NZIA, NZIA
Associate Director: Sarah Wray, Kerri Brada
Associate: Tim Hayes, Luke Keating

SECTIONS - BLOCK J - 01
HIGH SCHOOL
CATHERINE MCAULEY CATHOLIC COLLEGE
507 MEDOWIE ROAD, MEDOWIE, NSW

ISSUED:
FOR DA APPROVAL
NOT FOR CONSTRUCTION



NORTH:

PROJECT COMMENCEMENT DATE: 01.05.2017 SHEET NUMBER: 2544_05_1001_F