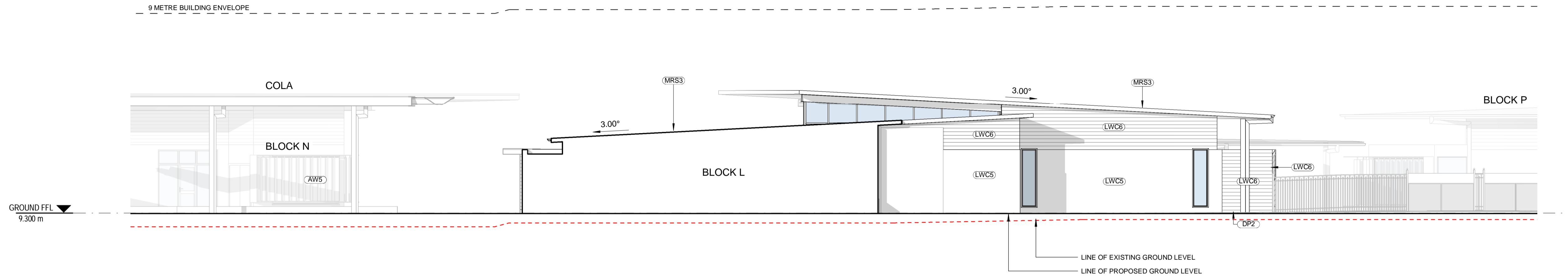
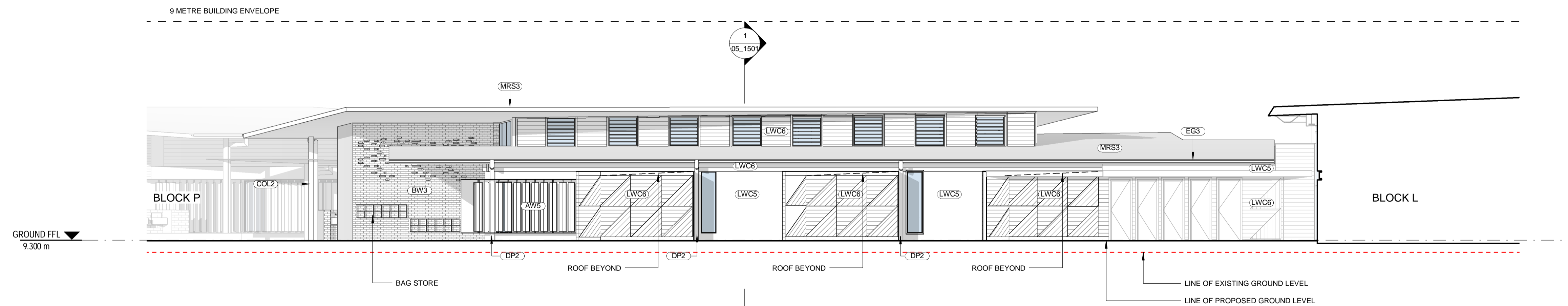


ABBREVIATIONS	
AW5	AWNING - TYPE 5
BW3	BRICK WALL - TYPE 3
COL2	COLUMN - TYPE 2
DP2	DOWNPIPE - TYPE 2
DP3	DOWNPIPE - TYPE 3
EG2	EAVES GUTTER - TYPE 2
EG3	EAVES GUTTER - TYPE 3
FHR	FIRE HOSE REEL
GD	GRATED DRAIN
LWC5	LIGHT WEIGHT CLADDING - TYPE 5
LWC6	LIGHT WEIGHT CLADDING - TYPE 6
MAT	RECESSED DOOR MAT
MRC	METAL ROOF CAPPING
MRS3	METAL ROOF SHEETING - TYPE 3
MRS4	METAL ROOF SHEETING - TYPE 4

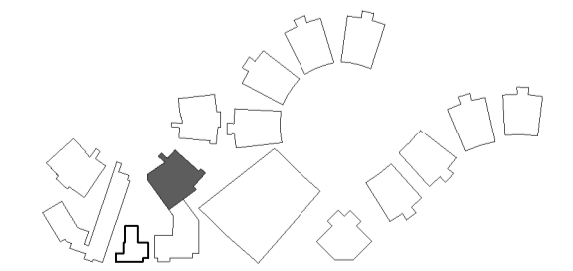


**1** ELEVATION 3  
03\_1501 SCALE 1:100



**2** ELEVATION 4  
03\_1501 SCALE 1:100

LOCATION PLAN



REV	DATE	DESCRIPTION	BY	CHK
A	16.02.2018	DEVELOPED DESIGN - 90%	CA	
B	09.03.2018	FOR GA	CA	
C	29.03.2018	FOR CLIENT APPROVAL	SwR	LK
D	15.05.2018	FOR DEVELOPMENT APPROVAL	CH	



**webberarchitects**  
commercial and residential

Suite 3, Level 1 456 Hunter St Newcastle • PO Box 807 The Junction 2291  
1 41 4 22 4 22 4 1 0 7 8 • 02 4960 1212 • 02 4910 1612 1613  
newcastle@webberarchitects.com • www.webberarchitects.com

Director: Jill Webber (Chartered Architect) AIA, NSW AIB NO. 9030  
Senior Architect: Sarah Wray, Kerri Brada  
Associate: Tim Hayes  
Associate: Luke Keating

**ELEVATIONS - BLOCK O - 02**  
**PRIMARY SCHOOL**  
CATHERINE MCAULEY CATHOLIC COLLEGE  
507 MEDOWIE ROAD, MEDOWIE, NSW

ISSUED:  
**FOR DA APPROVAL**  
**NOT FOR CONSTRUCTION**

SCALE:  
0 1000 2000 3000 4000 5000 mm  
SCALE 1:100 @ A1

NORTH:

PROJECT COMMENCEMENT DATE: 01.05.2017

SHEET NUMBER: **2544\_DA\_04\_1502\_D**