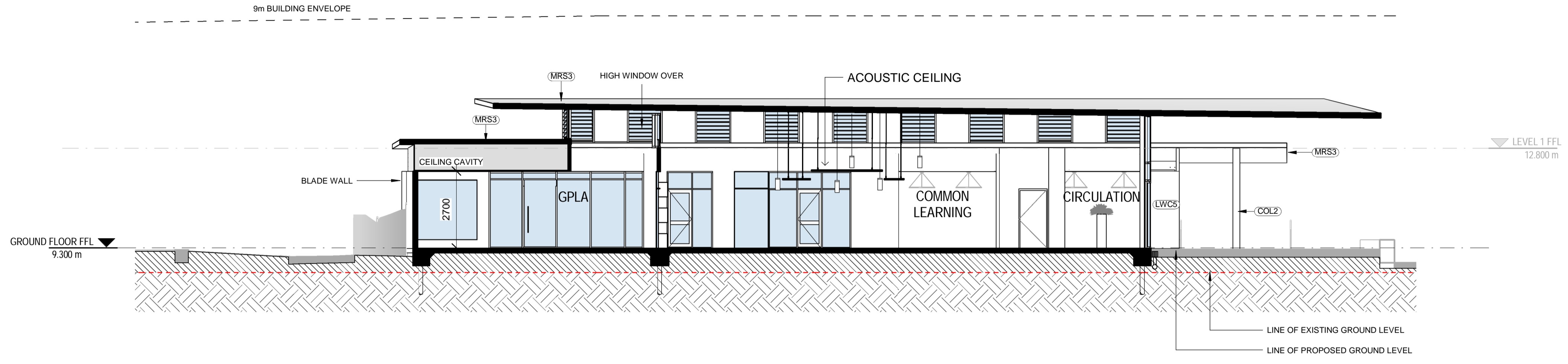
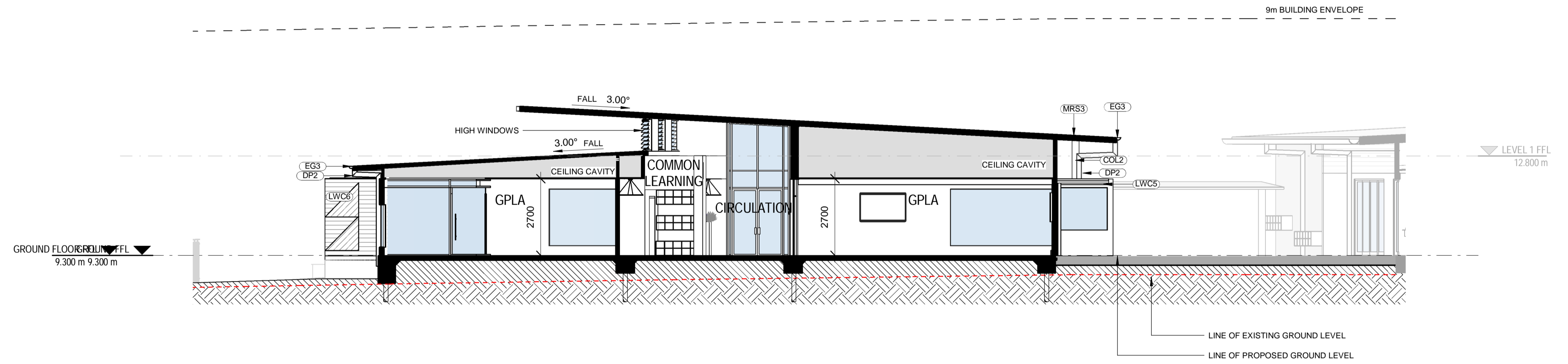


ABBREVIATION	
AW5	AWNING - TYPE 5
BW2	BRICK WALL - TYPE 2
COL2	COLUMN - TYPE 2
COL3	COLUMN - TYPE 3
DP2	DOWNPIPE - TYPE 2
DP3	DOWNPIPE - TYPE 3
EG2	EAVES GUTTER - TYPE 2
EG3	EAVES GUTTER - TYPE 3
FHR	FIRE HOSE REEL
GD	GRATED DRAIN
LWC4	LIGHT WEIGHT CLADDING - TYPE 4
LWC5	LIGHT WEIGHT CLADDING - TYPE 5
LWC6	LIGHT WEIGHT CLADDING - TYPE 6
MAT	RECESSED DOOR MAT
MRC	METAL ROOF CAPPING
MRS3	METAL ROOF SHEETING - TYPE 3
MRS4	METAL ROOF SHEETING - TYPE 4

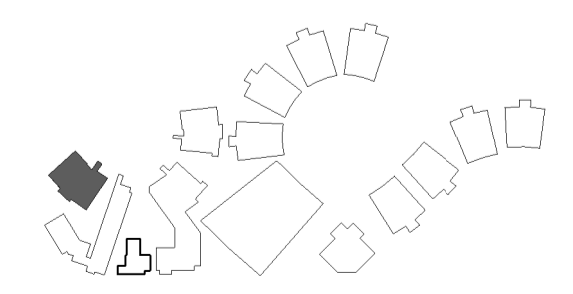


1 SECTION 1
03_1301 SCALE 1:100



2 SECTION 2
03_1301 SCALE 1:100

LOCATION PLAN



REV	DATE	DESCRIPTION	BY	CHK
A	16.02.2018	DEVELOPED DESIGN - 90%	SR	SR
B	09.03.2018	FOR GA	ME	ME
C	29.03.2018	FOR CLIENT APPROVAL	SR	LK
D	15.05.2018	FOR DEVELOPMENT APPROVAL	CH	CH



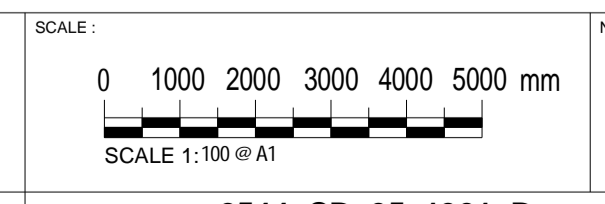
webberarchitects
commercial and residential

141 + 612 4926 1978
newcastle@webberarchitects.com • www.webberarchitects.com

Directors: Jill Webber (Chartered Architect, AIA, NSW A&P NO. 803), Sarah Wray, Kerri Brada
Associate Director: Tim Hayes
Associate: Luke Keating

SECTIONS - BLOCK M - 01
PRIMARY SCHOOL
CATHERINE MCAULEY CATHOLIC COLLEGE
507 MEDOWIE ROAD, MEDOWIE, NSW

ISSUED:
FOR DA APPROVAL
NOT FOR CONSTRUCTION



PROJECT COMMENCEMENT DATE: 01.05.2017
SHEET NUMBER: **2544_CD_05_1301_D**