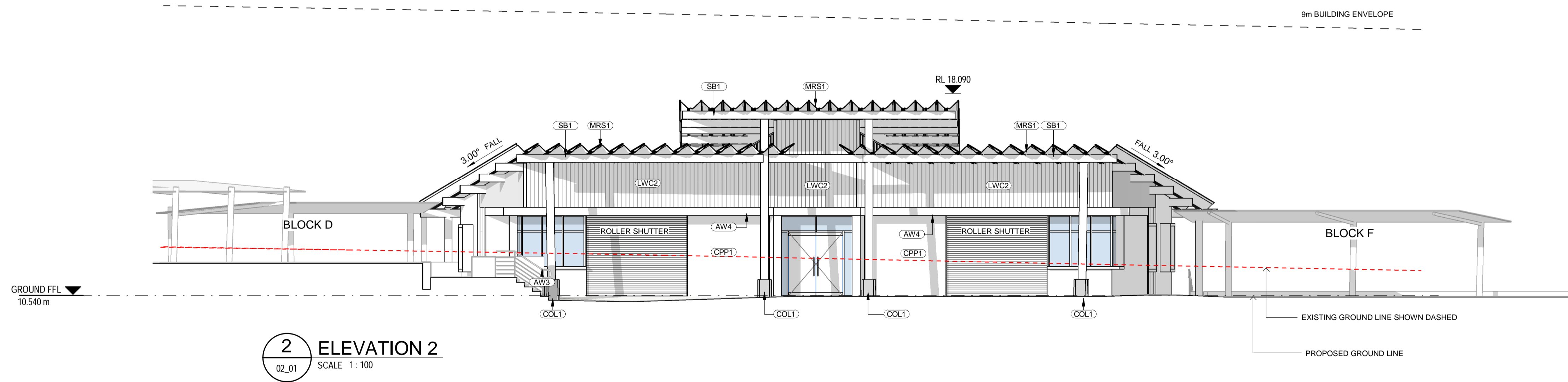
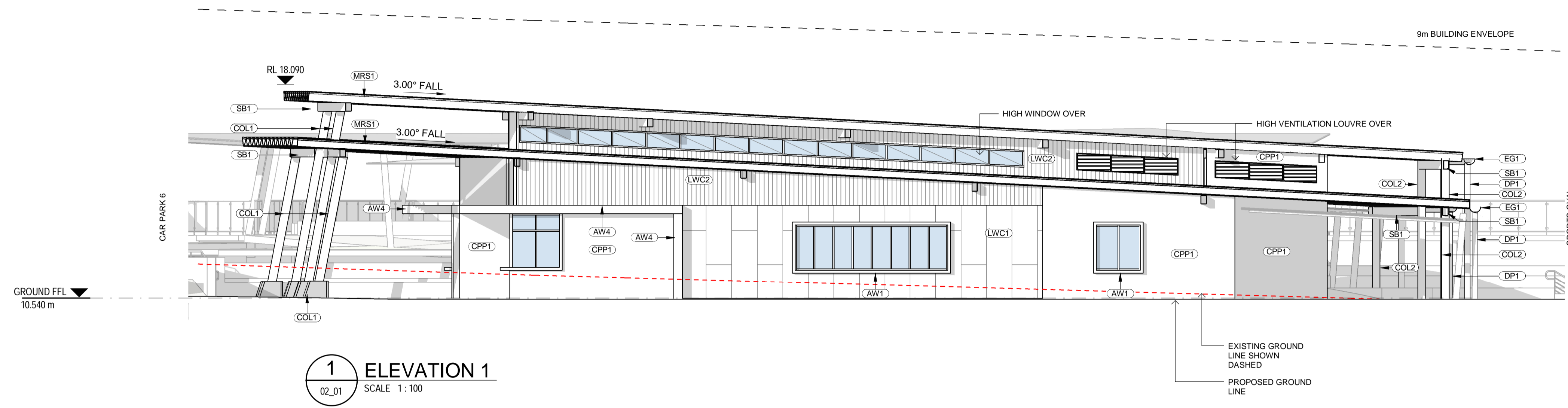
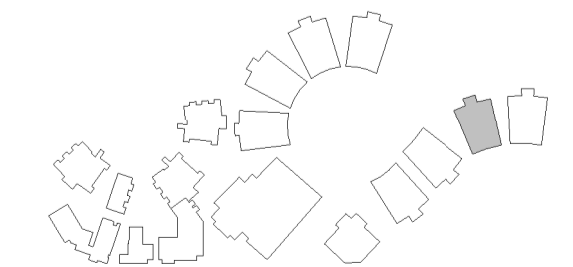


ABBREVIATIONS

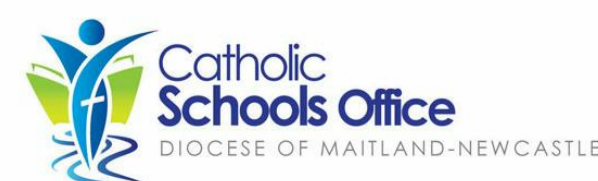
AW1	AWNING - TYPE 1
AW2	AWNING - TYPE 2
AW3	AWNING - TYPE 3
AW4	AWNING - TYPE 4
COL1	COLUMN - TYPE 1
COL2	COLUMN - TYPE 2
CON1	CONCRETE - TYPE 1
CPP1	CONCRETE PRECAST PANEL - TYPE 1
DP1	DOWNPIPE - TYPE 1
EG1	EAVES GUTTER - TYPE 1
LWC1	LIGHT WEIGHT CLADDING - TYPE 1
LWC2	LIGHT WEIGHT CLADDING - TYPE 2
MRS1	METAL ROOF SHEETING - TYPE 1
MRS2	METAL ROOF SHEETING - TYPE 2
PAV1	PAVING - TYPE 1
SB1	STEEL BEAM - TYPE 1



LOCATION PLAN



REV	DATE	DESCRIPTION	BY	CHK
A	26.07.2017	FOR REVIEW	FE	
B	16.01.2018	FOR STAKEHOLDER MEETING	ME	
C	25.01.2018	DESIGN REVIEW	ME	
D	01.02.2018	CONSULTANT COORDINATION	CA	
E	16.02.2018	DEVELOPED DESIGN - 80%	ME	
F	09.03.2018	FOR DA	ME	
G	29.03.2018	FOR CLIENT APPROVAL	DF	TH
H	15.05.2018	FOR DEVELOPMENT APPROVAL	CH	



webberarchitects
commercial and residential

Suite 3, Level 1 456 Hunter St Newcastle • PO Box 807 The Junction 2291
1 41 4 12 4 22 6 1 0 7 8 • 412 46912 98 • 412 31161 988
newcastle@webberarchitects.com • www.webberarchitects.com

Director: Jill Webber (Chartered Architect, AIA, NSW AIB NO. 9830)
Senior Architects: Sarah Wray, Karen Brada
Architects: Tim Hayes
Associates: Luke Keating

ELEVATIONS - BLOCK E - 01
HIGH SCHOOL TAS & DESIGN
CATHERINE MCAULEY CATHOLIC COLLEGE
507 MEDOWIE ROAD, MEDOWIE, NSW

ISSUED:
FOR DA APPROVAL
NOT FOR CONSTRUCTION

SCALE:
0 1000 2000 3000 4000 5000 mm
SCALE 1:100 @ A1

NORTH:

PROJECT COMMENCEMENT DATE: 01.05.2017

SHEET NUMBER: 2544_04_0501_H