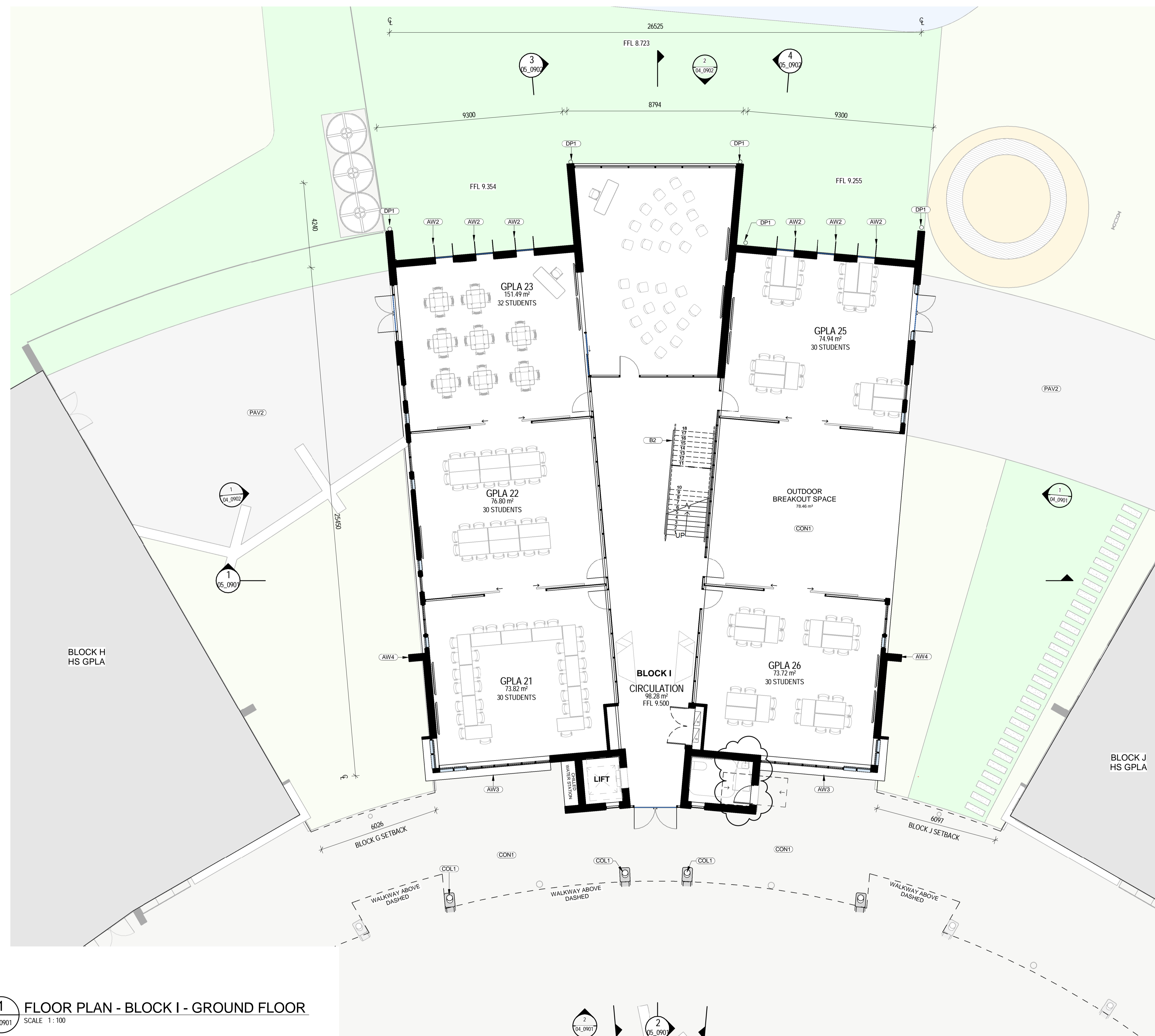
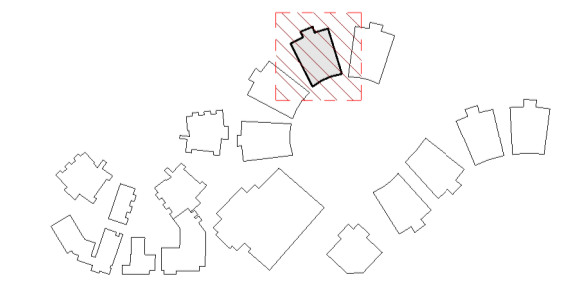


ABBREVIATIONS	
AW2	AWNING - TYPE 2
AW3	AWNING - TYPE 3
AW4	AWNING - TYPE 4
B1	BALUSTRADE - TYPE 1
B2	BALUSTRADE - TYPE 2
COL1	COLUMN - TYPE 1
CON1	CONCRETE - TYPE 1
CPP1	CONCRETE PRECAST PANEL - TYPE 1
DP1	DOWNPIPE - TYPE 1
EG	EAVES GUTTER
LWC1	LIGHT WEIGHT CLADDING - TYPE 1
LWC2	LIGHT WEIGHT CLADDING - TYPE 2
MRS1	METAL ROOF SHEETING - TYPE 1
MRS2	METAL ROOF SHEETING - TYPE 2
PAV2	PAVING - TYPE 2
RWT1	RAIN WATER TANK - TYPE 1
S1	SCREEN - TYPE 1



1 FLOOR PLAN - BLOCK I - GROUND FLOOR
04_0901 SCALE 1:100

LOCATION PLAN



REV	DATE	DESCRIPTION	BY	CHK
A	26.07.2017	FOR REVIEW	FE	
B	02.08.2017	FOR PRE-DA	FE	
C	09.11.2017	FOR CLIENT COMMENT	CA	
D	05.12.2017	FOR PIC MEETING	PS	
E	16.01.2018	FOR STAKEHOLDER MEETING	CH	
F	16.02.2018	DEVELOPED DESIGN - 30%	RH	
G	09.03.2018	FOR DA	CH	
H	29.03.2018	FOR CLIENT APPROVAL	RH	TH
I	15.05.2018	FOR DEVELOPMENT APPROVAL	CH	

BUILDER TO CONFIRM ALL DETAILS, SETOUTS (TILE, ETC.), FALLS & CONNECTIONS ON SITE BEFORE CONSTRUCTION

PRINT DATE: 30/05/2018 5:21:24 PM

FILE PATH: C:\Users\chris.H/Documents\2544 Medowie_High_School_Block_I_GPLA_chris.H\383BVQ.mxd

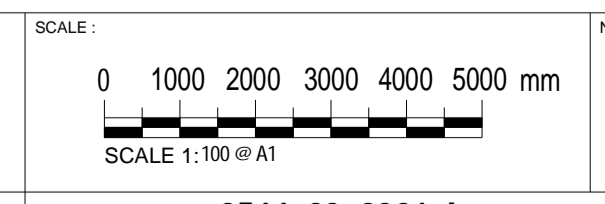


Suite 3, Level 1 456 Hunter St Newcastle NSW 1510
1 41 4 22 4 22 6 1 9 7 8
newcastle@webberarchitects.com www.webberarchitects.com

Director: Jill Webber (Chartered Architect, AIA, NSW AIB NO. 6030)
Senior Designer: Sarah Wray, Karen Brooks
Associate: Tim Heald
Associate: Luke Keating

FLOOR PLAN - BLOCK I - GROUND
HS GPLA
CATHERINE MCAULEY CATHOLIC COLLEGE
507 MEDOWIE ROAD, MEDOWIE, NSW

ISSUED:
FOR DA APPROVAL
NOT FOR CONSTRUCTION



PROJECT COMMENCEMENT DATE: 01.05.2017

SHEET NUMBER: 2544_03_0901_I

This drawing and the design expressed are copyright and remain the property of Webber Architects. In accordance with the commonwealth copyright act 1968 this drawing and design in whole or part may not be used unless licensed by Webber Architects. Verify all dimensions and falls on site before construction and do not scale from drawing.