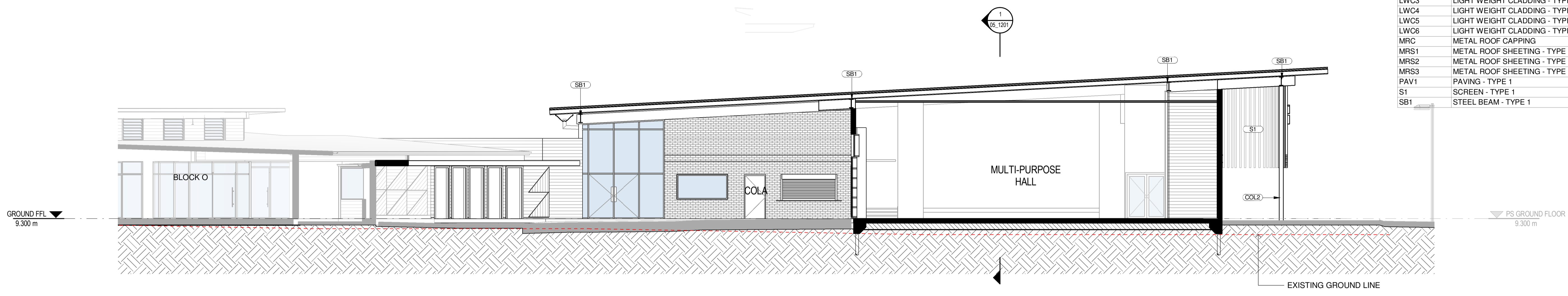
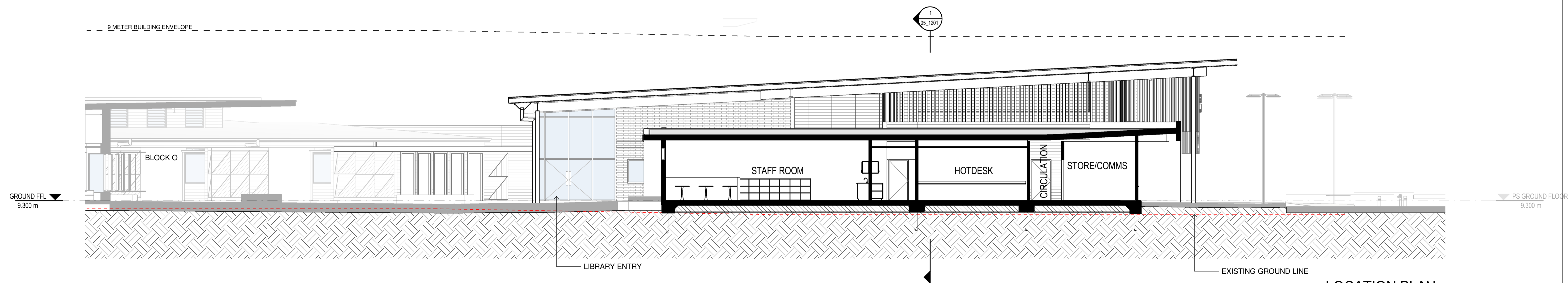


ABBREVIATIONS	
AW1	AWNING - TYPE 1
BW5	BRICK WALL - TYPE 5
COL2	COLUMN - TYPE 2
CON1	CONCRETE - TYPE 1
CPP1	CONCRETE PRECAST PANEL - TYPE 1
DP2	DOWNPIPE - TYPE 2
EG2	EAVES GUTTER - TYPE 2
EG3	EAVES GUTTER - TYPE 3
FAS	FASCIA
LWC3	LIGHT WEIGHT CLADDING - TYPE 3
LWC4	LIGHT WEIGHT CLADDING - TYPE 4
LWC5	LIGHT WEIGHT CLADDING - TYPE 5
LWC6	LIGHT WEIGHT CLADDING - TYPE 6
MRC	METAL ROOF CAPPING
MRS1	METAL ROOF SHEETING - TYPE 1
MRS2	METAL ROOF SHEETING - TYPE 2
MRS3	METAL ROOF SHEETING - TYPE 3
PAV1	PAVING - TYPE 1
S1	SCREEN - TYPE 1
SB1	STEEL BEAM - TYPE 1

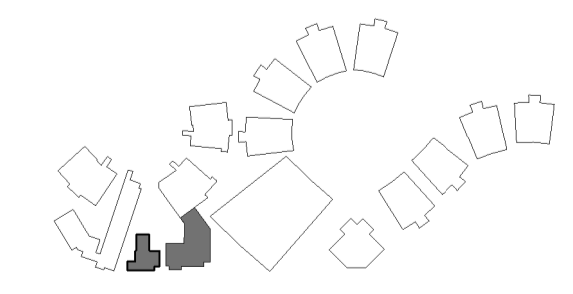


1 SECTION 3
03_1201 SCALE 1:100



2 SECTION 4
03_1201 SCALE 1:100

LOCATION PLAN



REV	DATE	DESCRIPTION	BY	CHK
A	16.02.2018	DEVELOPED DESIGN - 90%	CA	
B	12.03.2018	FOR GA	CA	
C	29.03.2018	FOR CLIENT APPROVAL	RH	TH
D	15.05.2018	FOR DEVELOPMENT APPROVAL	CH	

BUILDER TO CONFIRM ALL DETAILS, SETOUTS (TILE, ETC.), FALLS & CONNECTIONS ON SITE BEFORE CONSTRUCTION

PRINT DATE: 16/05/2018 4:28:53 PM FILE PATH: C:\Users\Candice\Documents\2544 Medowie Primary School Hall Block L_Candice.n



webberarchitects
commercial and residential

141 - 612 4226 1978
newcastle@webberarchitects.com www.webberarchitects.com

Director: Jill Webber (International Architect) AIA, NZIA, AIA, NZIA, RIBA
Associate Director: Sarah Wray, Kerri Brooks
Associate: Luke Keating

SECTIONS - BLOCK L - 02
PRIMARY SCHOOL
CATHERINE MCAULEY CATHOLIC COLLEGE
507 MEDOWIE ROAD

ISSUED:
FOR DA APPROVAL
NOT FOR CONSTRUCTION

SCALE:
0 1000 2000 3000 4000 5000 mm
SCALE 1:100 @ A1

NORTH:
PROJECT COMMENCEMENT DATE: 01.05.2017
SHEET NUMBER: **2544_05_1202_D**

This drawing and the design expressed are copyright and remain the property of Webber Architects. In accordance with the commonwealth copyright act 1968 this drawing and design in whole or part may not be used unless licensed by Webber Architects. Verify all dimensions and falls on site before construction and do not scale from drawing.