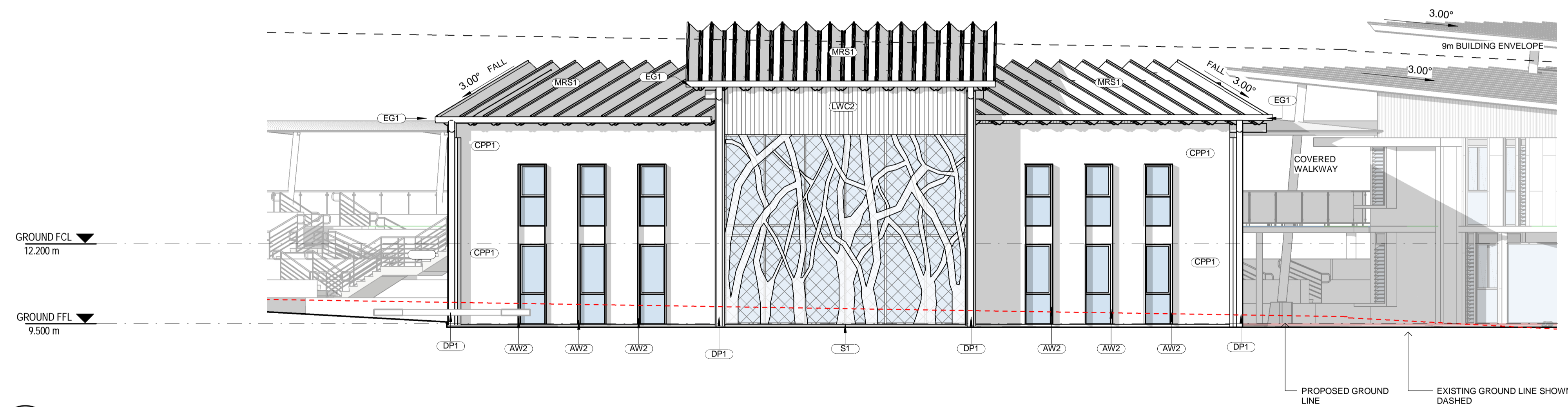


ABBREVIATIONS

AW2	AWNING - TYPE 2
AW3	AWNING - TYPE 3
AW4	AWNING - TYPE 4
B1	BALUSTRADE - TYPE 1
B2	BALUSTRADE - TYPE 2
COL1	COLUMN - TYPE 1
COL3	COLUMN - TYPE 3
CON1	CONCRETE - TYPE 1
CPP1	CONCRETE PRECAST PANEL - TYPE 1
DP1	DOWNPIPE - TYPE 1
EG1	EAVES GUTTER - TYPE 1
LWC1	LIGHT WEIGHT CLADDING - TYPE 1
LWC2	LIGHT WEIGHT CLADDING - TYPE 2
MRS1	METAL ROOF SHEETING - TYPE 1
MRS2	METAL ROOF SHEETING - TYPE 2
PAV2	PAVING - TYPE 2
S1	SCREEN - TYPE 1

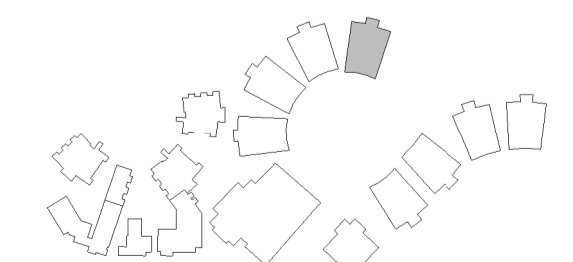


1 ELEVATION 3
02_01 SCALE 1:100



2 ELEVATION 4
02_01 SCALE 1:100

LOCATION PLAN



REV	DATE	DESCRIPTION	BY	CHK
A	09.11.2017	FOR CLIENT COMMENT	CA	
B	16.01.2018	FOR STAKEHOLDER MEETING	ME	
C	25.01.2018	DESIGN REVIEW	ME	
D	16.02.2018	DEVELOPED DESIGN - 90%	ME	
E	09.03.2018	FOR GA	ME	
F	29.03.2018	FOR CLIENT APPROVAL	ME	TH
G	15.05.2018	FOR DEVELOPMENT APPROVAL	CH	

BUILDER TO CONFIRM ALL DETAILS, SETOUTS (FILE, ETC.), FALLS & CONNECTIONS ON SITE BEFORE CONSTRUCTION

PRINT DATE: 30/05/2018 5:32:08 PM

FILE PATH: C:\Users\chris\Documents\2544 Medowie_High_School_Block_J - CPLA_chris.h38VQ.rvt



webberarchitects
commercial and residential

Suite 3, Level 1 456 Hunter St Newcastle • PO Box 807 The Junction 2291
1 41 4 424 1 078 • 081 489 02 188 • 081 21 181 02 188
newcastle@webberarchitects.com • www.webberarchitects.com

Directors: Jill Webber (Chartered Architect), AIA, NSW AIB NO. 9830
Suzanne Wetherby, Kerrie Brooks
Associate Director: Tim Heppell
Associates: Luke Keating

ELEVATIONS - BLOCK J - 02

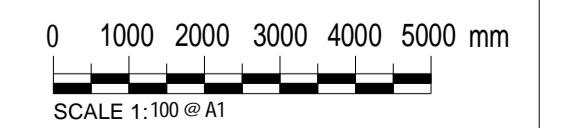
HIGH SCHOOL
CATHERINE MCAULEY CATHOLIC COLLEGE
507 MEDOWIE ROAD, MEDOWIE, NSW

ISSUED:

FOR DA APPROVAL
NOT FOR CONSTRUCTION

PROJECT COMMENCEMENT DATE: 01.05.2017

SCALE:



NORTH:

SHEET NUMBER: **2544_04_1002_G**

This drawing and the design expressed are copyright and remain the property of Webber Architects. In accordance with the commonwealth copyright act 1968 this drawing and design in whole or part may not be used unless licensed by Webber Architects. Verify all dimensions and falls on site before construction and do not scale from drawing.