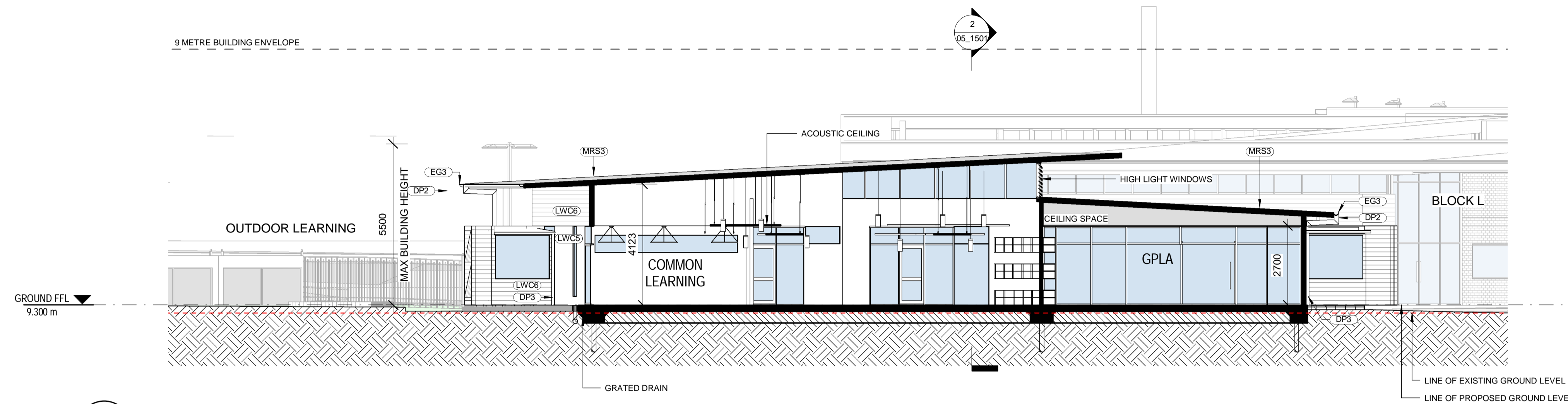
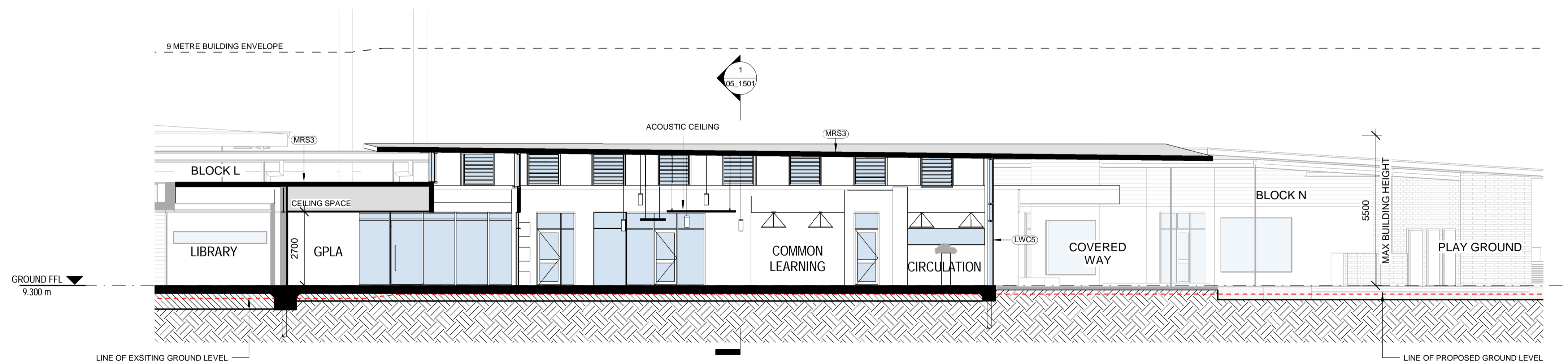


ABBREVIATIONS	
AW5	AWNING - TYPE 5
BW3	BRICK WALL - TYPE 3
COL2	COLUMN - TYPE 2
DP2	DOWNPIPE - TYPE 2
DP3	DOWNPIPE - TYPE 3
EG2	EAVES GUTTER - TYPE 2
EG3	EAVES GUTTER - TYPE 3
FHR	FIRE HOSE REEL
GD	GRATED DRAIN
LWC5	LIGHT WEIGHT CLADDING - TYPE 5
LWC6	LIGHT WEIGHT CLADDING - TYPE 6
MAT	RECESSED DOOR MAT
MRC	METAL ROOF CAPPING
MRS3	METAL ROOF SHEETING - TYPE 3
MRS4	METAL ROOF SHEETING - TYPE 4

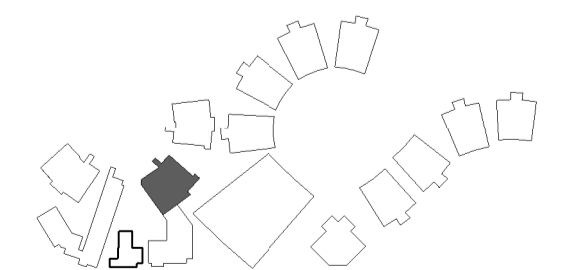


1 SECTION 1
03_1501 SCALE 1:100



2 SECTION 2
03_1501 SCALE 1:100

LOCATION PLAN



REV	DATE	DESCRIPTION	BY	CHK
A	25.01.2018	DESIGN REVIEW	CA	
B	16.02.2018	DEVELOPED DESIGN - 90%	CA	
C	09.03.2018	FOR QA	CA	
D	29.03.2018	FOR CLIENT APPROVAL	SWR	LK
E	15.05.2018	FOR DEVELOPMENT APPROVAL	CH	



webberarchitects
commercial and residential
Suite 3, Level 1 456 Hunter St Newcastle • PO Box 807 The Junction 2291
1 41 4 12 4 22 6 1 9 7 8 • 081 480 02 08 • 081 01 01 01 08
newcastle@webberarchitects.com • www.webberarchitects.com

Director: Jill Webber (Chartered Architect, AIA, NSW AIB NO. 9830)
Associate Director: Sarah Wetherby, Kerah Brooks
Associates: Tim Heppell, Luke Keating

SECTIONS - BLOCK O - 01
PRIMARY SCHOOL
CATHERINE MCAULEY CATHOLIC COLLEGE
507 MEDOWIE ROAD, MEDOWIE, NSW

ISSUED:
FOR DA APPROVAL
NOT FOR CONSTRUCTION

SCALE:
0 1000 2000 3000 4000 5000 mm
SCALE 1:100 @ A1

NORTH:

PROJECT COMMENCEMENT DATE: 01.05.2017
SHEET NUMBER: **2544_DA_05_1501_E**