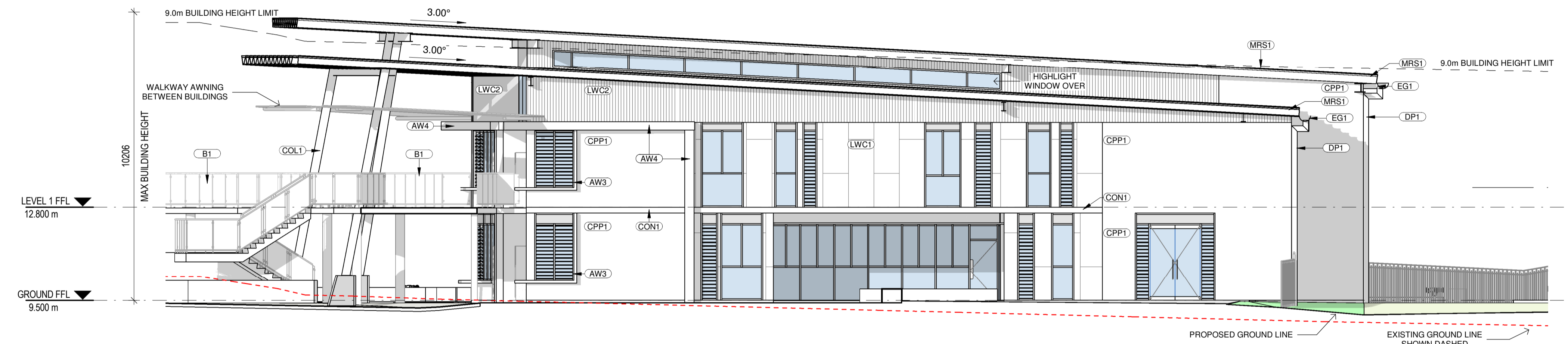
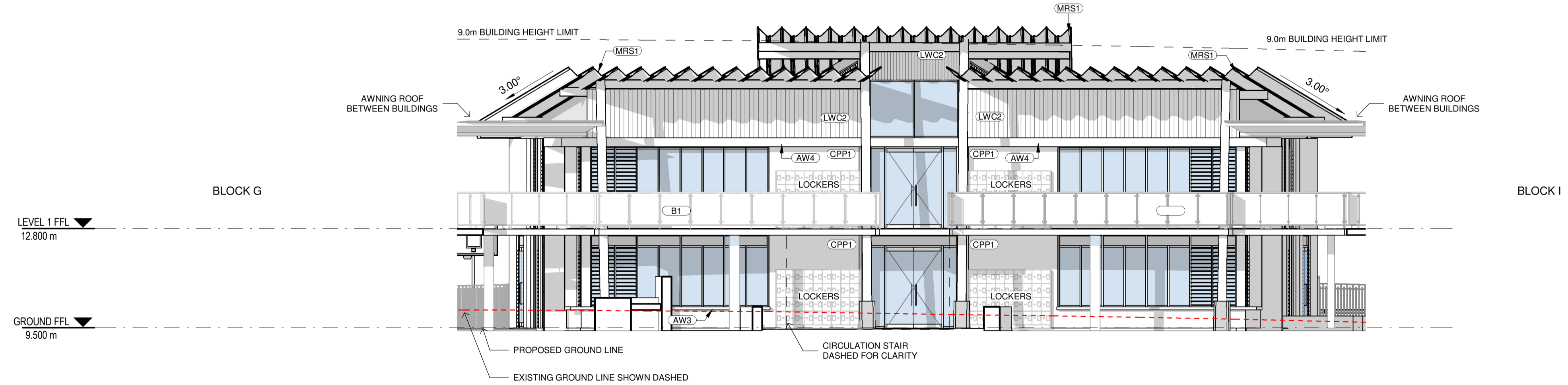


ABBREVIATIONS	
AW3	AWNING - TYPE 3
AW4	AWNING - TYPE 4
B1	BALUSTRADE - TYPE 1
COL1	COLUMN - TYPE 1
CON1	CONCRETE - TYPE 1
CPP1	CONCRETE PRECAST PANEL - TYPE 1
DP1	DOWNPIPE - TYPE 1
EG1	EAVES GUTTER - TYPE 1
LWC1	LIGHT WEIGHT CLADDING - TYPE 1
LWC2	LIGHT WEIGHT CLADDING - TYPE 2
MRS1	METAL ROOF SHEETING - TYPE 1

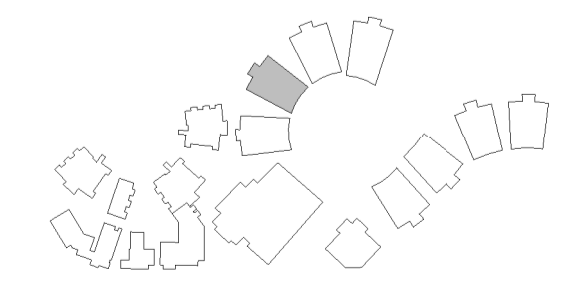


1 ELEVATION 1
02_01 SCALE 1:100



2 ELEVATION 2
02_01 SCALE 1:100

LOCATION PLAN



REV	DATE	DESCRIPTION	BY	CHK
A	09.11.2017	FOR CLIENT COMMENT	CA	
B	16.01.2018	FOR STAKEHOLDER MEETING	CH	
C	25.01.2018	DESIGN REVIEW	ME	
D	16.02.2018	DEVELOPED DESIGN - 90%	CH	
E	09.03.2018	FOR DA	CH	
F	29.03.2018	FOR CLIENT APPROVAL	ME	TH
G	15.05.2018	FOR DEVELOPMENT APPROVAL	CH	

BUILDER TO CONFIRM ALL DETAILS, SETOUTS (TILE, ETC.), FALLS & CONNECTIONS ON SITE BEFORE CONSTRUCTION

PRINT DATE: 17/05/2018 5:09:29 PM FILE PATH: C:\Users\luke\Documents\2544 Medowie_High School Block H - GPLA_lukeH.JSD.rvt



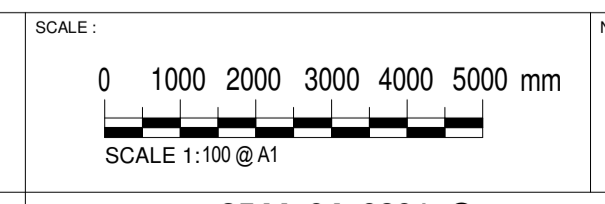
webberarchitects
commercial and residential

141 + 612 4226 1078
newcastle@webberarchitects.com www.webberarchitects.com

Director: Jill Webber (International Architects Ltd, NSW A&P NO. 6030)
Associate Director: Sarah Wray, Karen Brooks
Associates: Tim Hayes, Luke Keating

ELEVATIONS - BLOCK H - 01
HIGH SCHOOL
CATHERINE McAULEY CATHOLIC COLLEGE
507 MEDOWIE ROAD, MEDOWIE, NSW

ISSUED:
FOR DA APPROVAL
NOT FOR CONSTRUCTION



NORTH:

PROJECT COMMENCEMENT DATE: 01.05.2017 SHEET NUMBER: **2544_04_0801_G**

This drawing and the design expressed are copyright and remain the property of Webber Architects. In accordance with the commonwealth copyright act 1968 this drawing and design in whole or part may not be used unless licensed by Webber Architects. Verify all dimensions and falls on site before construction and do not scale from drawing.