

SITE NOTES

- REFER TO THE DETAILED SURVEY PLAN FOR EXISTING LEVELS, BOUNDARIES, VEGETATION, SITE SERVICES, SITE EASEMENTS, BUILDINGS & INFRASTRUCTURE.
- REFER TO THE BUILDING CERTIFIERS BCA COMPLIANCE ASSESSMENT FOR BCA ASSESSMENT
- REFER TO THE ACCESS CONSULTANTS REPORTS FOR TRAFFIC AND ACCESS ASSESSMENT
- REFER TO THE BUSHFIRE CONSULTANTS BUSHFIRE ASSESSMENT REPORT FOR SITE ASSESSMENT, SITE SERVICES, SETBACKS, ATTACK LEVELS, EMERGENCY PROCEDURES & ACCESS.
- REFER TO THE ACOUSTIC ENGINEERS NOISE ASSESSMENT REPORT FOR NOISE TYPES AND NOISE ASSESSMENTS.
- REFER TO THE ENVIRONMENTAL CONSULTANTS HISTORICAL HERITAGE ASSESSMENT FOR HISTORICAL CONTEXT, ABORIGINAL PAST, ARCHAEOLOGICAL ASSESSMENT, AND LEVELS OF SIGNIFICANCE
- REFER TO THE CONSULTING ARBORISTS, ARBORICULTURAL IMPACT ASSESSMENT REPORT FOR SITE INVESTIGATIONS, LIMITATIONS, TREE PRESERVATIONS, & IMPACTS OF THE DEVELOPMENTS.
- REFER TO THE ENVIRONMENTAL ENGINEERS, BIODIVERSITY DEVELOPMENT ASSESSMENT REPORT LANDSCAPE CONTEXT, NATIVE VEGETATION, IMPACT PRESENTATION, AND BIODIVERSITY CREDITS.
- REFER TO THE TRAFFIC CONSULTANTS, TRAFFIC IMPACT ASSESSMENT REPORT FOR EXISTING SITUATION, PROPOSED ACCESS, CAR PARKING CALCULATIONS, AND TRANSPORTATION ANALYSIS
- REFER TO BCA CONSULTANTS, BCA SECTION J COMPLIANCE REPORT FOR GLAZING CALCULATIONS.
- REFER TO THE GEOTECHNICAL ENGINEERS, GEOTECHNICAL INVESTIGATION FOR SITE INVESTIGATIONS, SUBSURFACE CONDITIONS, SITE CLASSIFICATION, LABORATORY TESTS, EARTHWORKS, ACID SULFATE SOILS, AND LIMITATIONS.
- REFER TO THE CIVIL ENGINEERS DOCUMENTATION FOR SEDIMENTATION & EROSION CONTROL PLANS, STORMWATER PLANS, STORMWATER MANAGEMENT PLAN, AND THE PROPOSED SIGNALISED INTERSECTION ROADWORKS & DRAINAGE PLANS.
- REFER TO THE ELECTRICAL ENGINEERS, ELECTRICAL DOCUMENTATION INCLUDING EARTHING, KIOSK LOCATIONS, LIGHTING, POWER SUPPLY, AUSGRID CONNECTION, AND MAXIMUM DEMANDS.
- REFER TO THE HYDRAULIC ENGINEERS, HYDRAULIC DRAWINGS FOR PRELIMINARY SITE ASSESSMENT.
- REFER TO THE LANDSCAPE ARCHITECTS DOCUMENTATION FOR LANDSCAPE DESIGN PRINCIPLES, MASTERPLAN, PLANTING STRATEGY, PLANTING PALETTE, ACCESS & CIRCULATION, WAY FINDING & ENTRY SIGNAGE, MATERIALS & FINISHES, DETAILED LANDSCAPE PLANS & SECTIONS.
- REFER TO ENVIRONMENTAL ENGINEERS, CONTAMINATION ASSESSMENT FOR SITE INVESTIGATION, HAZARDOUS MATERIAL AUDIT, GROUNDWATER, ACID SULFATE SOILS AND SOIL ASSESSMENTS.
- REFER TO THE FLOOD ENGINEERS, FLOOD RISK & IMPACT ASSESSMENT REPORT FOR FLOOD IMPACTS, AND EMERGENCY MANAGEMENT.
- REFER TO STOICAL IMPACT CONSULTANTS, SOCIAL IMPACT ASSESSMENT REPORT FOR COMMUNITY PROFILE, FINDINGS AND ANALYSIS.

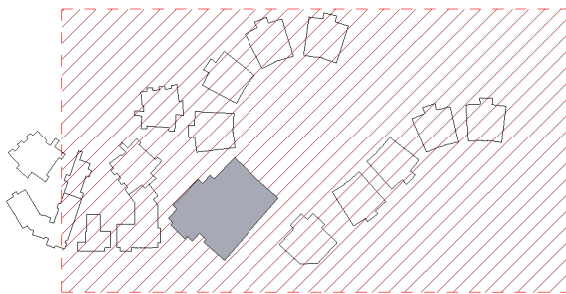
SAFETY IN DESIGN LEGEND

CODE	HAZZARD DESCRIPTION
	INDICATES AMENITIES, FACILITIES & FIRST AID
	INDICATES HIGH RISK ACTIVITIES ASSOCIATED WITH LIVE ELECTRICAL HAZARDS
	INDICATES HIGH RISK ACTIVITIES ASSOCIATED WITH EARTHWORKS/EXCAVATION
	INDICATES HIGH RISK ACTIVITIES ASSOCIATED WITH FIRE & EMERGENCIES
	INDICATES HIGH RISK ACTIVITIES ASSOCIATED WITH MANUAL TASKS AND/OR MAINTENANCE ACCESS
	INDICATES HIGH RISK ACTIVITIES ASSOCIATED WITH EXPOSURE TO NOISE
	INDICATES HIGH RISK ACTIVITIES ASSOCIATED WITH PLANT
	INDICATES HIGH RISK ACTIVITIES ASSOCIATED WITH THE MOVEMENT OF PEOPLE & MATERIALS
	INDICATES PROJECT SPECIFIC RISKS
	INDICATES HIGH RISK ACTIVITIES ASSOCIATED WITH HAZARDOUS SUBSTANCES
	INDICATES HIGH RISK ACTIVITIES ASSOCIATED WITH STRUCTURAL SAFETY AND DEMOLITION
	INDICATES HIGH RISK ACTIVITIES ASSOCIATED WITH WORKING ENVIRONMENT/CONFINED SPACE
	INDICATES HIGH RISK ACTIVITIES ASSOCIATED WITH WORKING AT HEIGHTS, FALLING OBJECTS

SITE LEGEND

	POOL, WETLAND, POND		1:100 YEAR FLOOD LINE
	EXISTING ROAD		SEPP 14 WETLANDS
	EXISTING STRUCTURE		CREEK FLOOD LINE
	XPP POWER POLE		CREEK TOP OF BANK
	POWER LINES		VEGETATION TRUNK LINE
	EXISTING TREE		VEGETATION CANOPY LINE
	DEMOLISH TREE		50M ASSET PROTECTION ZONE
	DEMOLISH HOLLOW BEARING TREE		
	HOLLOW BEARING TREE		
	NEW TREE		
	RING ROAD		NEW STRUCTURE
	NEW ROAD		

LOCATION PLAN



1 SITE PLAN - NORTH  
SCALE 1:500

REV	DATE	DESCRIPTION	BY	CHK
0	16.02.2018	DEVELOPED DESIGN - 90%	DF	
P	02.03.2018	FOR CONSULTANT COORDINATION	LK	
Q	09.03.2018	FOR DA	LK	
R	14.03.2018	FOR CONSULTANT COORDINATION	LK	
S	29.03.2018	FOR CLIENT APPROVAL	LK	TH
T	04.04.2018	FOR CLIENT APPROVAL	LK	
U	16.04.2018	FOR COUNCIL INFORMATION	LK	
V	04.05.2018	FOR REVIEW	ME	
W	15.05.2018	FOR DEVELOPMENT APPROVAL	LK	

BUILDER TO CONFIRM ALL DETAILS, SETOUTS (TILE, ETC.), FALLS & CONNECTIONS ON SITE BEFORE CONSTRUCTION

PRINT DATE: 18/05/2018 5:55:15 PM

FILE PATH: C:\Users\megan.eyman\Documents\2544 Medowie Catholic School\_megan.eyman.rvt



webberarchitects  
commercial and residential

Suite 3, Level 1 486 Hunter St Newcastle • PO Box 807 The Junction 2291  
t +61 2 4924 1078 • june.ward@webbarchitects.com • www.webbarchitects.com  
newcastle@webbarchitects.com

Directors: Jon Webber (Principal Architect), AIA, NSW APB NO. 6830  
Sandra Storchy, Karen Brooks  
Associate Directors: Tim Hayes  
Associates: Luke Keating

SITE PLAN - NORTH

CATHERINE McAULEY CATHOLIC COLLEGE  
507 MEDOWIE ROAD, MEDOWIE

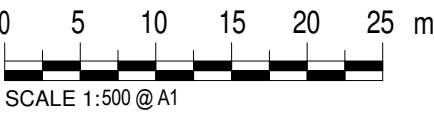
ISSUED:

FOR DA APPROVAL

NOT FOR CONSTRUCTION

PROJECT COMMENCEMENT DATE: 01.05.2017

SCALE:



SCALE 1:500 @ A1

NORTH:



SHEET NUMBER:

2544\_02\_0003\_W

This drawing and the design expressed are copyright and remain the property of Webber Architects. In accordance with the commonwealth copyright act 1968 this drawing and design in whole or part may not be used unless licensed by Webber Architects. Verify all dimensions and falls on site before construction and do not scale from drawing.