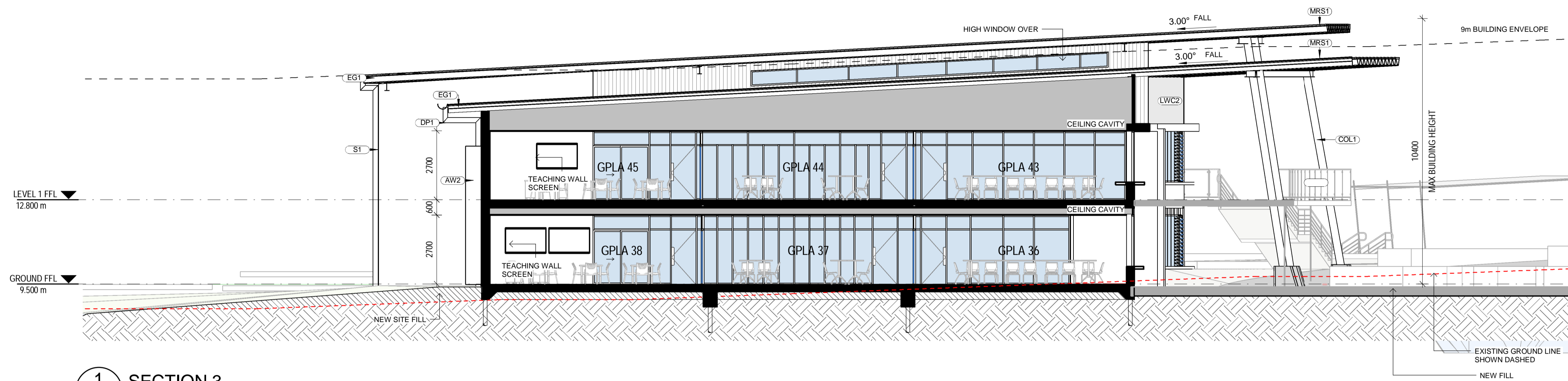
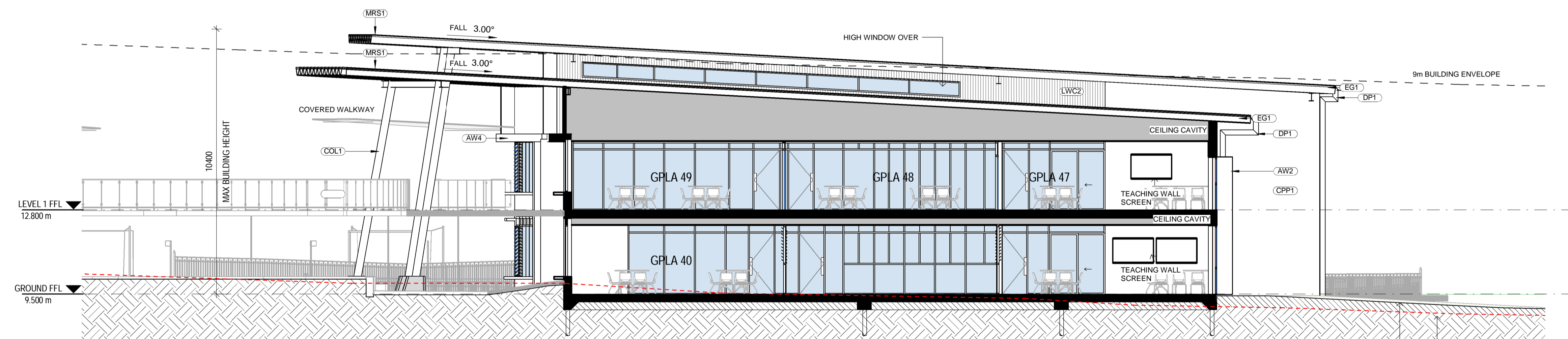


ABBREVIATIONS

AW2	AWNING - TYPE 2
AW3	AWNING - TYPE 3
AW4	AWNING - TYPE 4
B1	BALUSTRADE - TYPE 1
B2	BALUSTRADE - TYPE 2
COL1	COLUMN - TYPE 1
COL3	COLUMN - TYPE 3
CON1	CONCRETE - TYPE 1
CPP1	CONCRETE PRECAST PANEL - TYPE 1
DP1	DOWNPIPE - TYPE 1
EG1	EAVES GUTTER - TYPE 1
LWC1	LIGHT WEIGHT CLADDING - TYPE 1
LWC2	LIGHT WEIGHT CLADDING - TYPE 2
MRS1	METAL ROOF SHEETING - TYPE 1
MRS2	METAL ROOF SHEETING - TYPE 2
PAV2	PAVING - TYPE 2
S1	SCREEN - TYPE 1

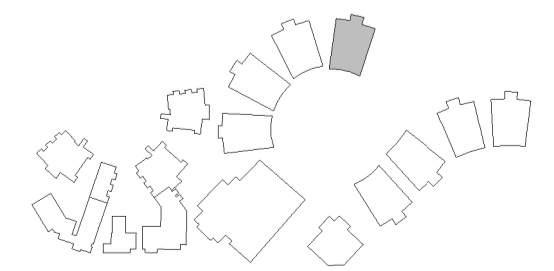


1 SECTION 3
02_01 SCALE 1:100



2 SECTION 4
02_01 SCALE 1:100

LOCATION PLAN



REV	DATE	DESCRIPTION	BY	CHK
A	16.02.2018	DEVELOPED DESIGN - 90%	ME	
B	09.03.2018	FOR GA	ME	
C	29.03.2018	FOR CLIENT APPROVAL	ME	TH
D	15.05.2018	FOR DEVELOPMENT APPROVAL	CH	



webberarchitects
commercial and residential

Suite 3, Level 1 456 Hunter St Newcastle • PO Box 807 The Junction 2291
1 41 4 424 1 978 • 412 48402 268 • 412 21 141 01 268
newcastle@webberarchitects.com • www.webberarchitects.com

Director: Jill Webber (Chartered Architect) Lic. 12314 (NSW) 8030
Associate Director: Sarah Wray, Kerrie Brooks
Associates: Tim Heppell, Luke Keating

SECTIONS - BLOCK J - 02

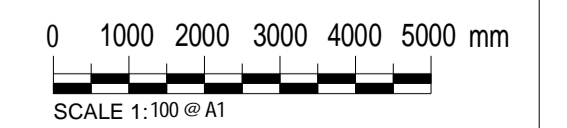
HIGH SCHOOL
CATHERINE MCAULEY CATHOLIC COLLEGE
507 MEDOWIE ROAD, MEDOWIE, NSW

ISSUED:

FOR DA APPROVAL
NOT FOR CONSTRUCTION

PROJECT COMMENCEMENT DATE: 01.05.2017

SCALE:



NORTH:

SHEET NUMBER: **2544_05_1002_D**