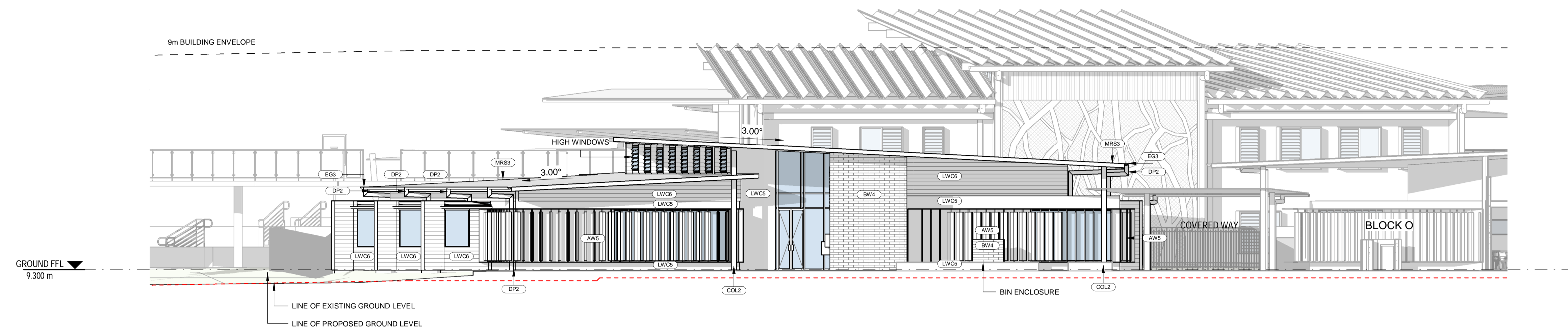
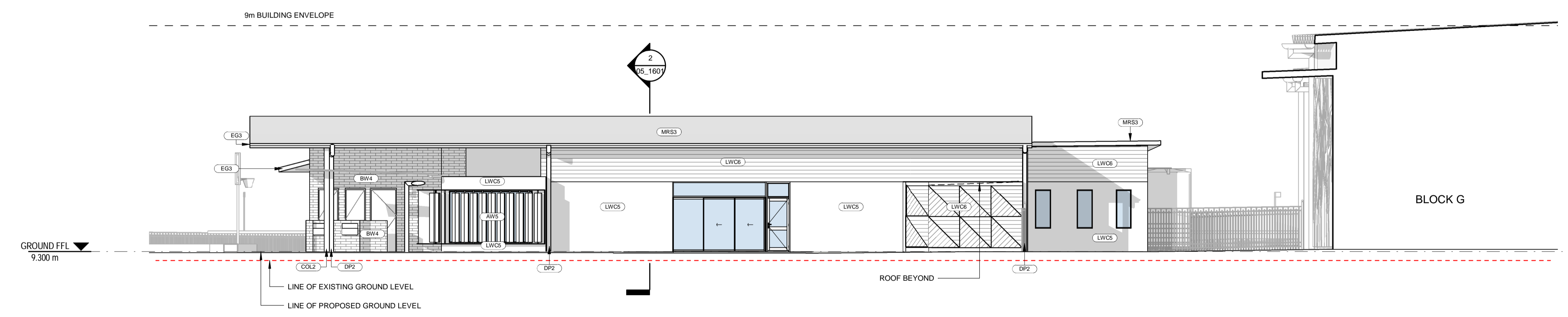


ABBREVIATION

| | |
|------|--------------------------------|
| AW5 | AWNING - TYPE 5 |
| BW4 | BRICK WALL - TYPE 4 |
| COL2 | COLUMN - TYPE 2 |
| DP2 | DOWNPIPE - TYPE 2 |
| DP3 | DOWNPIPE - TYPE 3 |
| EG2 | EAVES GUTTER - TYPE 2 |
| EG3 | EAVES GUTTER - TYPE 3 |
| FHR | FIRE HOSE REEL |
| LWC5 | LIGHT WEIGHT CLADDING - TYPE 5 |
| LWC6 | LIGHT WEIGHT CLADDING - TYPE 6 |
| MAT | RECESSED DOOR MAT |
| MRC | METAL ROOF CAPPING |
| MRS3 | METAL ROOF SHEETING - TYPE 3 |
| MRS4 | METAL ROOF SHEETING - TYPE 4 |

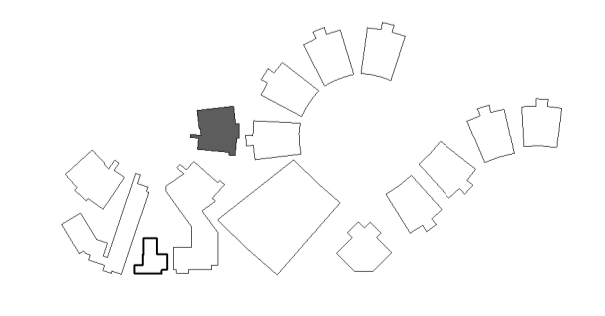


1 ELEVATION 1
03_1601 SCALE 1:100



2 ELEVATION 2
03_1601 SCALE 1:100

LOCATION PLAN



| REV | DATE | DESCRIPTION | BY | CHK |
|-----|------------|--------------------------|----|-----|
| A | 16.02.2018 | DEVELOPED DESIGN - 90% | SR | |
| B | 09.03.2018 | FOR GA | ME | |
| C | 29.03.2018 | FOR CLIENT APPROVAL | SR | LK |
| D | 15.05.2018 | FOR DEVELOPMENT APPROVAL | CH | |



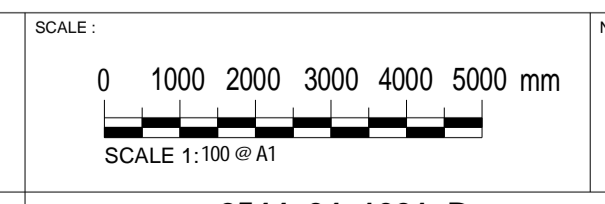
webber architects
commercial and residential

Suite 3, Level 1 490 Hunter St Newcastle • PO Box 807 The Junction 2291
Tel: +612 4924 1078 • Fax: 4920 1000 • 4920 1000
newcastle@webberarchitects.com • www.webberarchitects.com

Directors: Jill Webber (Principal Architect) AIA, NSW AHS NO. 8830
Sandra Strachan, Karen Brooks
Associates: Luke Keating

ELEVATIONS - BLOCK P - 01
PRIMARY SCHOOL
CATHERINE MCAULEY CATHOLIC COLLEGE
507 MEDOWIE ROAD, MEDOWIE, NSW

ISSUED:
FOR DA APPROVAL
NOT FOR CONSTRUCTION



NORTH:

PROJECT COMMENCEMENT DATE: Issue Date

SHEET NUMBER: **2544_04_1601_D**