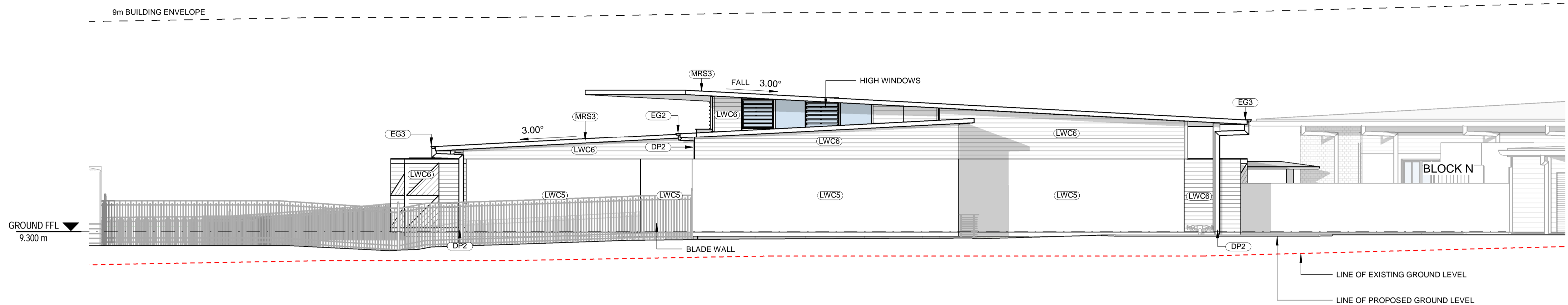
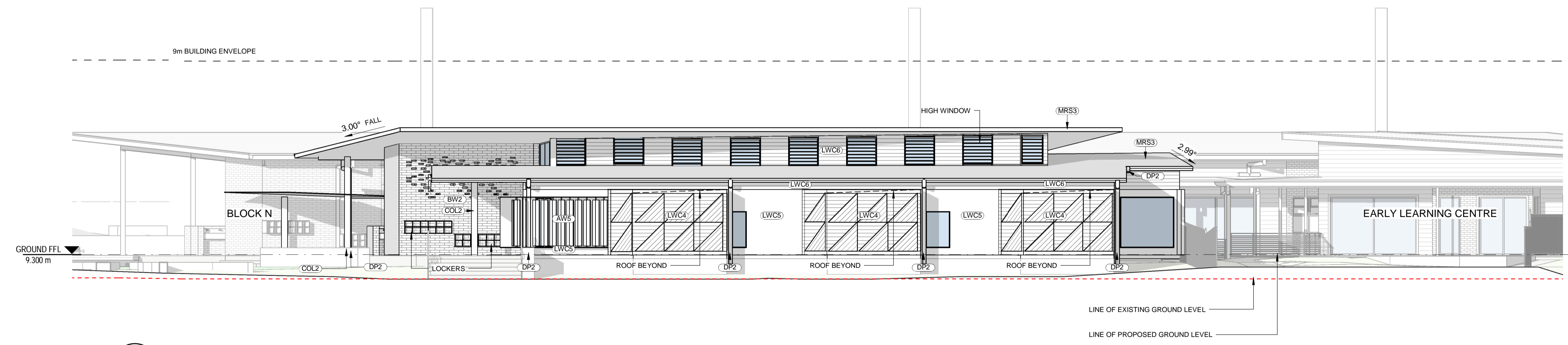


ABBREVIATION	
AW5	AWNING - TYPE 5
BW2	BRICK WALL - TYPE 2
COL2	COLUMN - TYPE 2
COL3	COLUMN - TYPE 3
DP2	DOWNPIPE - TYPE 2
DP3	DOWNPIPE - TYPE 3
EG2	EAVES GUTTER - TYPE 2
EG3	EAVES GUTTER - TYPE 3
FHR	FIRE HOSE REEL
GD	GRATED DRAIN
LWC4	LIGHT WEIGHT CLADDING - TYPE 4
LWC5	LIGHT WEIGHT CLADDING - TYPE 5
LWC6	LIGHT WEIGHT CLADDING - TYPE 6
MAT	RECESSED DOOR MAT
MRC	METAL ROOF CAPPING
MRS3	METAL ROOF SHEETING - TYPE 3
MRS4	METAL ROOF SHEETING - TYPE 4

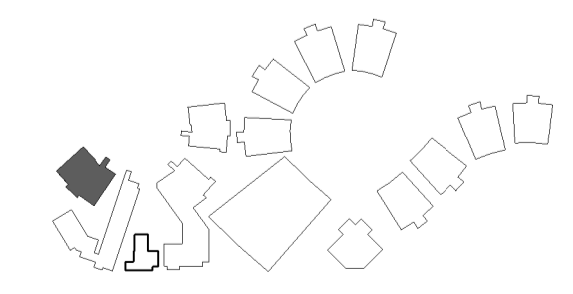


**1** ELEVATION 3  
03\_1301 SCALE 1:100



**2** ELEVATION 4  
03\_1301 SCALE 1:100

LOCATION PLAN



REV	DATE	DESCRIPTION	BY	CHK
A	16.02.2018	DEVELOPED DESIGN - 90%	SR	
B	09.03.2018	FOR GA	ME	
C	29.03.2018	FOR CLIENT APPROVAL	SR	LK
D	15.05.2018	FOR DEVELOPMENT APPROVAL	CH	

BUILDER TO CONFIRM ALL DETAILS, SETOUTS (TILE, ETC.), FALLS & CONNECTIONS ON SITE BEFORE CONSTRUCTION

PRINT DATE: 10/05/2018 11:24:37 AM FILE PATH: C:\Users\chris\Documents\2544 Medowie\_Primary School Block M\_chris.N53BVQ.m



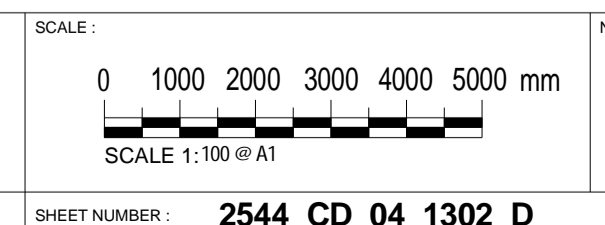
**webberarchitects**  
commercial and residential

141 - 812 4226 1978  
newcastle@webberarchitects.com www.webberarchitects.com

Directors: Jill Webber (Chartered Architect), Neil Webb BSc  
Associate Directors: Sarah Wetherby, Kerri Brooks  
Associates: Tim Hayes, Luke Keating

**ELEVATIONS - BLOCK M - 02**  
**PRIMARY SCHOOL**  
CATHERINE MCAULEY CATHOLIC COLLEGE  
507 MEDOWIE ROAD, MEDOWIE, NSW

ISSUED:  
**FOR DA APPROVAL**  
**NOT FOR CONSTRUCTION**



NORTH:  
PROJECT COMMENCEMENT DATE: 01.05.2017  
SHEET NUMBER: **2544\_CD\_04\_1302\_D**

This drawing and the design expressed are copyright and remain the property of Webber Architects. In accordance with the commonwealth copyright act 1968 this drawing and design in whole or part may not be used unless licensed by Webber Architects. Verify all dimensions and falls on site before construction and do not scale from drawing.