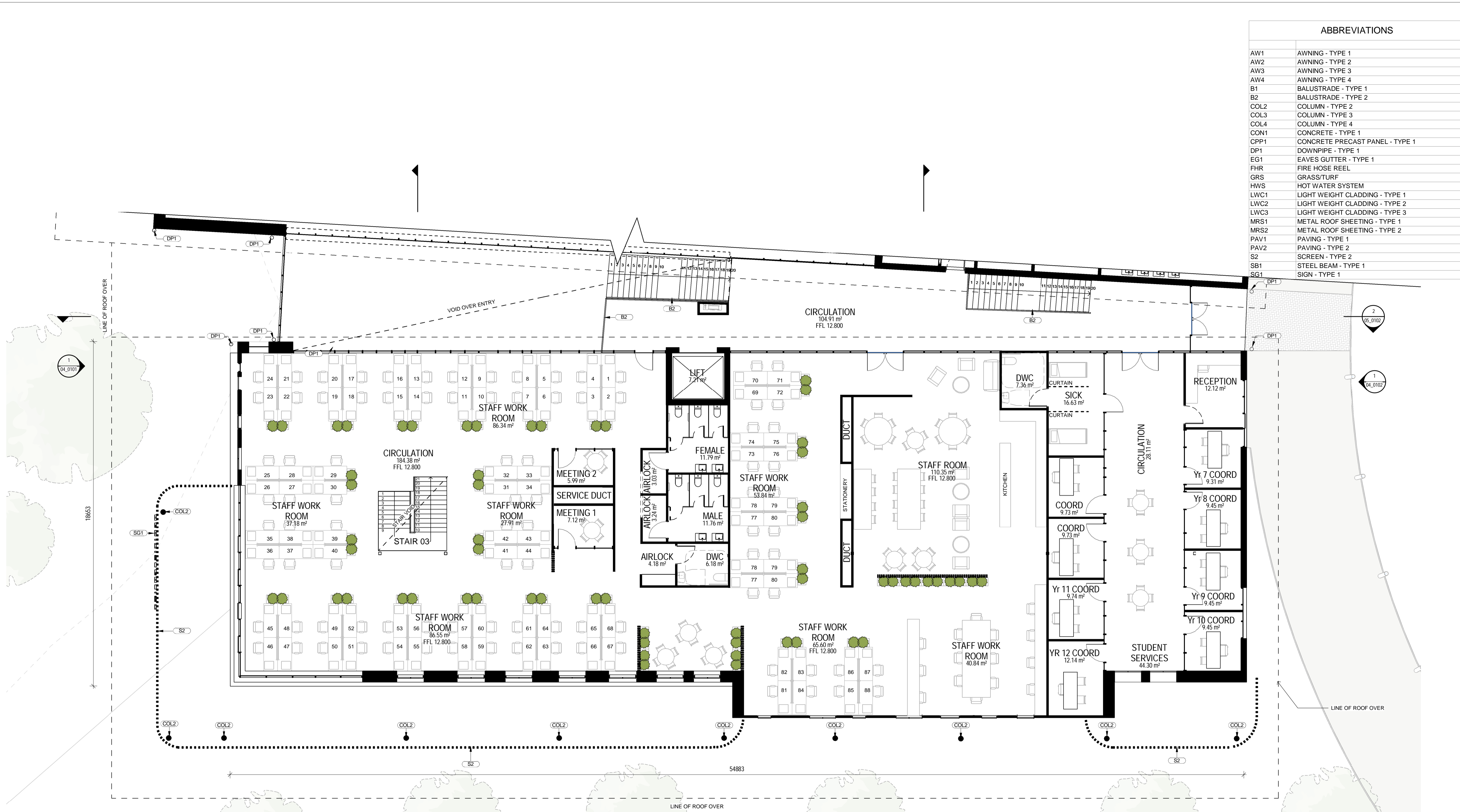


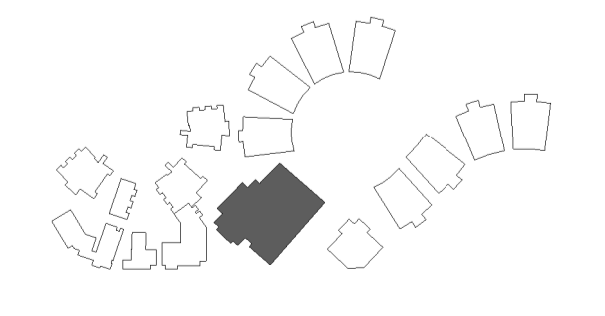
ABBREVIATIONS

AW1	AWNING - TYPE 1
AW2	AWNING - TYPE 2
AW3	AWNING - TYPE 3
AW4	AWNING - TYPE 4
B1	BALUSTRADE - TYPE 1
B2	BALUSTRADE - TYPE 2
COL2	COLUMN - TYPE 2
COL3	COLUMN - TYPE 3
COL4	COLUMN - TYPE 4
CON1	CONCRETE - TYPE 1
CPP1	CONCRETE PRECAST PANEL - TYPE 1
DP1	DOWNPIPE - TYPE 1
EG1	EAVES GUTTER - TYPE 1
FHR	FIRE HOSE REEL
GRS	GRASS/TURF
HWS	HOT WATER SYSTEM
LWC1	LIGHT WEIGHT CLADDING - TYPE 1
LWC2	LIGHT WEIGHT CLADDING - TYPE 2
LWC3	LIGHT WEIGHT CLADDING - TYPE 3
MRS1	METAL ROOF SHEETING - TYPE 1
MRS2	METAL ROOF SHEETING - TYPE 2
PAV1	PAVING - TYPE 1
PAV2	PAVING - TYPE 2
S2	SCREEN - TYPE 2
SB1	STEEL BEAM - TYPE 1
SG1	SIGN - TYPE 1



1 FLOOR PLAN - BLOCK A - LEVEL 1 EAST  
04\_0101 SCALE 1:100

LOCATION PLAN



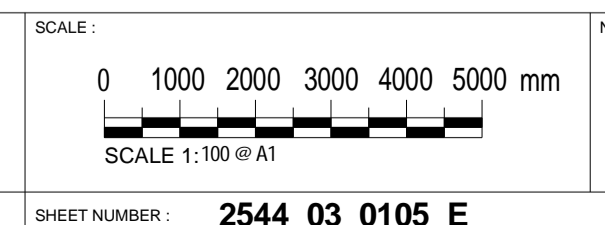
REV	DATE	DESCRIPTION	BY	CHK
A	25.01.2018	DESIGN REVIEW	ME	
B	16.02.2018	DEVELOPED DESIGN - 90%	ME	
C	09.03.2018	FOR QA	ME	
D	29.03.2018	FOR CLIENT APPROVAL	ME	TH
E	15.05.2018	FOR DEVELOPMENT APPLICATION	CH	



**webberarchitects**  
commercial and residential  
Suite 3, Level 1 498 Hunter St Newcastle - PO Box 807 The Junction 2291  
t: 61 2 424 1 078 f: 61 2 424 1 078  
newcastle@webberarchitects.com www.webberarchitects.com

**FLOOR PLAN - BLOCK A - LEVEL 1 - 02**  
**HIGH SCHOOL**  
CATHERINE MCAULEY CATHOLIC SCHOOL  
507 MEDOWIE ROAD, MEDOWIE, NSW

ISSUED:  
**FOR DA APPROVAL**  
**NOT FOR CONSTRUCTION**



PROJECT COMMENCEMENT DATE: 01.05.2017 SHEET NUMBER: 2544\_03\_0105\_E