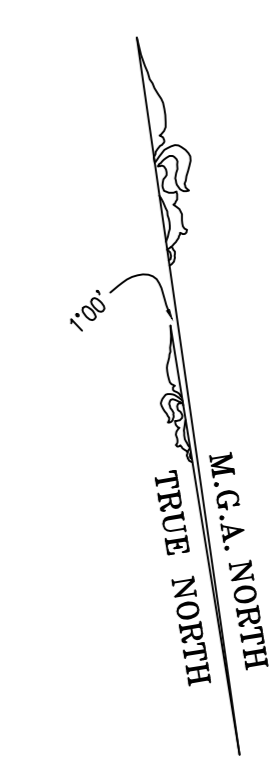


SHEET 7 ADJOINS

4
D P 858938
SITE AREA 32668.3m²



M.G.A. COORDINATES

BOUNDARY COR	EASTING	NORTHING
1	263 504.468	6181 156.362
2	263 380.199	6181 174.181
3	263 306.946	6181 184.685

(B) EASEMENT TO DRAIN WATER 2 WIDE (DP 836467)
(C) RIGHT OF FOOTWAY 2 WIDE (DP 858938)

ISSUE	DATE	AMENDMENT	PAY/PH
2	25.07.16	ADD CONTOURS 3D MESH	PAY/PH
3	10.07.17	ADD TO SITE INFORMATION ADD SH 14 & 15	LS/PH
4	31.08.17	ADD INTERNAL DETAIL	LS/PH

- TYPICAL NOTES:
1. GRASS & LEVELS IN 3000 & 10000 (A14)
 2. BOUNDARIES ON MONA NORTH
 3. NO BOUNDARY SURVEY HAS BEEN UNDERTAKEN
 4. BOUNDARIES & DISTANCES HAVE BEEN COMPILED FROM TITLE AND/OR DEED INFORMATION SUPPLIED BY BOUNDARIES OF LANDS NSW
 5. RELATIONSHIP OF IMPROVEMENTS AND DETAIL TO BOUNDARIES IS DIAGNOSTIC ONLY AND SPECIFIC DETAILS OF CRITICAL WILL REQUIRE FURTHER SURVEY
 6. SERVICES SHOWN ARE BASED ON VISUAL SURVEY AND/OR RECORD AT THE DATE OF SURVEY AND THE RELEVANT SERVICE DRAWINGS OF THE VARIOUS AUTHORITIES. ALL SERVICES MUST BE VERIFIED ON SITE PRIOR TO ANY WORK BEING UNDERTAKEN UNDER SURVEYING PTY LTD BEING RESPONSIBLE FOR THE ACCURACY OR COMPLETENESS OF THE SERVICES SHOWN HEREIN
 7. ROAD, GATE & CUTTER HEIGHTS HAVE BEEN OBTAINED BY AN INDIRECT METHOD AND ARE ACCURATE FOR PLANNING PURPOSES ONLY
 8. ALL WORKING DRAWINGS AND DETAILS HAVE BEEN PREPARED FOR DIAGNOSTIC PURPOSES ONLY AND SPECIFIC DETAILS OF CRITICAL WILL REQUIRE FURTHER SURVEY
 9. THE SURVEYOR HAS CONSIDERED AS A RESULT OF EACH TREE IS INDICATED ONLY AND SPECIFIC DETAILS OF CRITICAL WILL REQUIRE FURTHER SURVEY
 10. CONTOURS ARE IN METERS AND THE TYPICAL ONLY. SPOT LEVELS SHOULD BE USED IF STATED OTHERWISE TO BE UNDERSTOOD
 11. CONTOUR INTERVAL 0.5 METRE

LEGEND OF TYPICAL CODES

AE - ARCHITECTURAL EMBELLISHMENT	MED - METAL LID
AF - ALUMINIUM FIN	MS - METAL SURFACE
AP - ANCHOR	OC - OCCULTURE
AR - ARCHITECTURAL RAIL	OF - OFFICE FIT
AS - ANCHOR STRAP	OS - OFFICE STRUCTURE
AW - ANCHOR WALL	PC - FROM CROSSING
BA - BOTTOM OF ANCHOR	PE - PAVEMENT CROSSING
BB - BOTTOM OF ANCHOR	PF - PERGOLA
BC - BOTTOM OF ANCHOR	PI - FINISHING MARK
BD - BOTTOM OF ANCHOR	PP - POWER POLE
BE - BOTTOM OF ANCHOR	PR - ROCK
BF - BOTTOM OF ANCHOR	RS - RAILWAY
BG - BOTTOM OF ANCHOR	RR - REFERENCE MARK
BH - BOTTOM OF ANCHOR	RO - ROOF ROOF
BI - BOTTOM OF ANCHOR	RS - ROOF ROOF
BJ - BOTTOM OF ANCHOR	SA - SINK
BK - BOTTOM OF ANCHOR	SB - SINK
BL - BOTTOM OF ANCHOR	SC - SINK
BM - BOTTOM OF ANCHOR	SD - SINK
BN - BOTTOM OF ANCHOR	SE - SINK
BO - BOTTOM OF ANCHOR	SF - SINK
BP - BOTTOM OF ANCHOR	SG - SINK
BQ - BOTTOM OF ANCHOR	SH - SINK
BR - BOTTOM OF ANCHOR	SI - SINK
BS - BOTTOM OF ANCHOR	SK - SINK
BT - BOTTOM OF ANCHOR	SL - SINK
BU - BOTTOM OF ANCHOR	SM - SINK
BV - BOTTOM OF ANCHOR	SN - SINK
BW - BOTTOM OF ANCHOR	SO - SINK
BX - BOTTOM OF ANCHOR	SP - SINK
BY - BOTTOM OF ANCHOR	SR - SINK
BZ - BOTTOM OF ANCHOR	SS - SINK
CA - BOTTOM OF ANCHOR	ST - SINK
CB - BOTTOM OF ANCHOR	SV - SINK
CC - BOTTOM OF ANCHOR	SW - SINK
CD - BOTTOM OF ANCHOR	TX - SINK
CE - BOTTOM OF ANCHOR	TY - SINK
CF - BOTTOM OF ANCHOR	UZ - SINK
CG - BOTTOM OF ANCHOR	VA - SINK
CH - BOTTOM OF ANCHOR	VB - SINK
CI - BOTTOM OF ANCHOR	VC - SINK
CJ - BOTTOM OF ANCHOR	VD - SINK
CK - BOTTOM OF ANCHOR	VE - SINK
CL - BOTTOM OF ANCHOR	VF - SINK
CM - BOTTOM OF ANCHOR	VG - SINK
CN - BOTTOM OF ANCHOR	VH - SINK
CO - BOTTOM OF ANCHOR	VI - SINK
CP - BOTTOM OF ANCHOR	VJ - SINK
CQ - BOTTOM OF ANCHOR	VK - SINK
CR - BOTTOM OF ANCHOR	VL - SINK
CS - BOTTOM OF ANCHOR	VM - SINK
CT - BOTTOM OF ANCHOR	VN - SINK
CU - BOTTOM OF ANCHOR	VO - SINK
CV - BOTTOM OF ANCHOR	VP - SINK
CW - BOTTOM OF ANCHOR	VQ - SINK
CX - BOTTOM OF ANCHOR	VR - SINK
CY - BOTTOM OF ANCHOR	VS - SINK
CZ - BOTTOM OF ANCHOR	VT - SINK
DA - BOTTOM OF ANCHOR	VF - SINK
DB - BOTTOM OF ANCHOR	VG - SINK
DC - BOTTOM OF ANCHOR	VH - SINK
DD - BOTTOM OF ANCHOR	VI - SINK
DE - BOTTOM OF ANCHOR	VJ - SINK
DF - BOTTOM OF ANCHOR	VK - SINK
DG - BOTTOM OF ANCHOR	VL - SINK
DH - BOTTOM OF ANCHOR	VM - SINK
DI - BOTTOM OF ANCHOR	VN - SINK
DJ - BOTTOM OF ANCHOR	VO - SINK
DK - BOTTOM OF ANCHOR	VP - SINK
DL - BOTTOM OF ANCHOR	VQ - SINK
DM - BOTTOM OF ANCHOR	VR - SINK
DN - BOTTOM OF ANCHOR	VS - SINK
DO - BOTTOM OF ANCHOR	VT - SINK
DP - BOTTOM OF ANCHOR	VF - SINK
DQ - BOTTOM OF ANCHOR	VG - SINK
DR - BOTTOM OF ANCHOR	VH - SINK
DS - BOTTOM OF ANCHOR	VI - SINK
DT - BOTTOM OF ANCHOR	VJ - SINK
DU - BOTTOM OF ANCHOR	VK - SINK
DV - BOTTOM OF ANCHOR	VL - SINK
DW - BOTTOM OF ANCHOR	VM - SINK
DX - BOTTOM OF ANCHOR	VN - SINK
DY - BOTTOM OF ANCHOR	VO - SINK
DZ - BOTTOM OF ANCHOR	VP - SINK
EA - BOTTOM OF ANCHOR	VQ - SINK
EB - BOTTOM OF ANCHOR	VR - SINK
EC - BOTTOM OF ANCHOR	VS - SINK
ED - BOTTOM OF ANCHOR	VT - SINK
EE - BOTTOM OF ANCHOR	VF - SINK
EF - BOTTOM OF ANCHOR	VG - SINK
EG - BOTTOM OF ANCHOR	VH - SINK
EH - BOTTOM OF ANCHOR	VI - SINK
EI - BOTTOM OF ANCHOR	VJ - SINK
EJ - BOTTOM OF ANCHOR	VK - SINK
EK - BOTTOM OF ANCHOR	VL - SINK
EL - BOTTOM OF ANCHOR	VM - SINK
EM - BOTTOM OF ANCHOR	VN - SINK
EN - BOTTOM OF ANCHOR	VO - SINK
EO - BOTTOM OF ANCHOR	VP - SINK
EP - BOTTOM OF ANCHOR	VQ - SINK
EQ - BOTTOM OF ANCHOR	VR - SINK
ER - BOTTOM OF ANCHOR	VS - SINK
ES - BOTTOM OF ANCHOR	VT - SINK
ET - BOTTOM OF ANCHOR	VF - SINK
EU - BOTTOM OF ANCHOR	VG - SINK
EV - BOTTOM OF ANCHOR	VH - SINK
EW - BOTTOM OF ANCHOR	VI - SINK
EX - BOTTOM OF ANCHOR	VJ - SINK
EY - BOTTOM OF ANCHOR	VK - SINK
EZ - BOTTOM OF ANCHOR	VL - SINK
FA - BOTTOM OF ANCHOR	VM - SINK
FB - BOTTOM OF ANCHOR	VN - SINK
FC - BOTTOM OF ANCHOR	VO - SINK
FD - BOTTOM OF ANCHOR	VP - SINK
FE - BOTTOM OF ANCHOR	VQ - SINK
FF - BOTTOM OF ANCHOR	VR - SINK
FG - BOTTOM OF ANCHOR	VS - SINK
FH - BOTTOM OF ANCHOR	VT - SINK
FI - BOTTOM OF ANCHOR	VF - SINK
FJ - BOTTOM OF ANCHOR	VG - SINK
FK - BOTTOM OF ANCHOR	VH - SINK
FL - BOTTOM OF ANCHOR	VI - SINK
FM - BOTTOM OF ANCHOR	VJ - SINK
FN - BOTTOM OF ANCHOR	VK - SINK
FO - BOTTOM OF ANCHOR	VL - SINK
FP - BOTTOM OF ANCHOR	VM - SINK
FQ - BOTTOM OF ANCHOR	VN - SINK
FR - BOTTOM OF ANCHOR	VO - SINK
FS - BOTTOM OF ANCHOR	VP - SINK
FT - BOTTOM OF ANCHOR	VQ - SINK
FU - BOTTOM OF ANCHOR	VR - SINK
FV - BOTTOM OF ANCHOR	VS - SINK
FW - BOTTOM OF ANCHOR	VT - SINK
FX - BOTTOM OF ANCHOR	VF - SINK
FY - BOTTOM OF ANCHOR	VG - SINK
FZ - BOTTOM OF ANCHOR	VH - SINK
GA - BOTTOM OF ANCHOR	VI - SINK
GB - BOTTOM OF ANCHOR	VJ - SINK
GC - BOTTOM OF ANCHOR	VK - SINK
GD - BOTTOM OF ANCHOR	VL - SINK
GE - BOTTOM OF ANCHOR	VM - SINK
GF - BOTTOM OF ANCHOR	VN - SINK
GG - BOTTOM OF ANCHOR	VO - SINK
GH - BOTTOM OF ANCHOR	VP - SINK
GI - BOTTOM OF ANCHOR	VQ - SINK
GO - BOTTOM OF ANCHOR	VR - SINK
GP - BOTTOM OF ANCHOR	VS - SINK
GQ - BOTTOM OF ANCHOR	VT - SINK
GR - BOTTOM OF ANCHOR	VF - SINK
GS - BOTTOM OF ANCHOR	VG - SINK
GT - BOTTOM OF ANCHOR	VH - SINK
GU - BOTTOM OF ANCHOR	VI - SINK
GV - BOTTOM OF ANCHOR	VJ - SINK
GW - BOTTOM OF ANCHOR	VK - SINK
GX - BOTTOM OF ANCHOR	VL - SINK
GY - BOTTOM OF ANCHOR	VM - SINK
GA - BOTTOM OF ANCHOR	VN - SINK
GB - BOTTOM OF ANCHOR	VO - SINK
GC - BOTTOM OF ANCHOR	VP - SINK
GD - BOTTOM OF ANCHOR	VQ - SINK
GE - BOTTOM OF ANCHOR	VR - SINK
GF - BOTTOM OF ANCHOR	VS - SINK
GF - BOTTOM OF ANCHOR	VT - SINK
GG - BOTTOM OF ANCHOR	VF - SINK
GH - BOTTOM OF ANCHOR	VG - SINK
GI - BOTTOM OF ANCHOR	VH - SINK
GJ - BOTTOM OF ANCHOR	VI - SINK
GK - BOTTOM OF ANCHOR	VJ - SINK
GL - BOTTOM OF ANCHOR	VK - SINK
GM - BOTTOM OF ANCHOR	VL - SINK
GN - BOTTOM OF ANCHOR	VM - SINK
GO - BOTTOM OF ANCHOR	VN - SINK
GP - BOTTOM OF ANCHOR	VO - SINK
GQ - BOTTOM OF ANCHOR	VP - SINK
GR - BOTTOM OF ANCHOR	VQ - SINK
GR - BOTTOM OF ANCHOR	VR - SINK
GS - BOTTOM OF ANCHOR	VS - SINK
GT - BOTTOM OF ANCHOR	VT - SINK
GU - BOTTOM OF ANCHOR	VF - SINK
GV - BOTTOM OF ANCHOR	VG - SINK
GW - BOTTOM OF ANCHOR	VH - SINK
GX - BOTTOM OF ANCHOR	VI - SINK
GY - BOTTOM OF ANCHOR	VJ - SINK
GA - BOTTOM OF ANCHOR	VK - SINK
GB - BOTTOM OF ANCHOR	VL - SINK
GC - BOTTOM OF ANCHOR	VM - SINK
GD - BOTTOM OF ANCHOR	VN - SINK
GE - BOTTOM OF ANCHOR	VO - SINK
GF - BOTTOM OF ANCHOR	VP - SINK
GF - BOTTOM OF ANCHOR	VQ - SINK
GG - BOTTOM OF ANCHOR	VR - SINK
GH - BOTTOM OF ANCHOR	VS - SINK
GI - BOTTOM OF ANCHOR	VT - SINK
GJ - BOTTOM OF ANCHOR	VF - SINK
GK - BOTTOM OF ANCHOR	VG - SINK
GL - BOTTOM OF ANCHOR	VH - SINK
GM - BOTTOM OF ANCHOR	VI - SINK
GN - BOTTOM OF ANCHOR	VJ - SINK
GO - BOTTOM OF ANCHOR	VK - SINK
GP - BOTTOM OF ANCHOR	VL - SINK
GQ - BOTTOM OF ANCHOR	VM - SINK
GR - BOTTOM OF ANCHOR	VN - SINK
GR - BOTTOM OF ANCHOR	VO - SINK
GS - BOTTOM OF ANCHOR	VP - SINK
GT - BOTTOM OF ANCHOR	VQ - SINK
GU - BOTTOM OF ANCHOR	VR - SINK
GV - BOTTOM OF ANCHOR	VS - SINK
GW - BOTTOM OF ANCHOR	VT - SINK
GX - BOTTOM OF ANCHOR	VF - SINK
GY - BOTTOM OF ANCHOR	VG - SINK
GA - BOTTOM OF ANCHOR	VH - SINK
GB - BOTTOM OF ANCHOR	VI - SINK
GC - BOTTOM OF ANCHOR	VJ - SINK
GD - BOTTOM OF ANCHOR	VK - SINK
GE - BOTTOM OF ANCHOR	VL - SINK
GF - BOTTOM OF ANCHOR	VM - SINK
GF - BOTTOM OF ANCHOR	VN - SINK
GG - BOTTOM OF ANCHOR	VO - SINK
GH - BOTTOM OF ANCHOR	VP - SINK
GI - BOTTOM OF ANCHOR	VQ - SINK
GJ - BOTTOM OF ANCHOR	VR - SINK
GK - BOTTOM OF ANCHOR	VS - SINK
GL - BOTTOM OF ANCHOR	VT - SINK
GM - BOTTOM OF ANCHOR	VF - SINK
GN - BOTTOM OF ANCHOR	VG - SINK
GO - BOTTOM OF ANCHOR	VH - SINK
GP - BOTTOM OF ANCHOR	VI - SINK
GQ - BOTTOM OF ANCHOR	VJ - SINK
GR - BOTTOM OF ANCHOR	VK - SINK
GR - BOTTOM OF ANCHOR	VL - SINK
GS - BOTTOM OF ANCHOR	VM - SINK
GT - BOTTOM OF ANCHOR	VN - SINK
GU - BOTTOM OF ANCHOR	VO - SINK
GV - BOTTOM OF ANCHOR	VP - SINK
GW - BOTTOM OF ANCHOR	VQ - SINK
GX - BOTTOM OF ANCHOR	VR - SINK
GY - BOTTOM OF ANCHOR	VS - SINK
GA - BOTTOM OF ANCHOR	VT - SINK
GB - BOTTOM OF ANCHOR	VF - SINK
GC - BOTTOM OF ANCHOR	VG - SINK
GD - BOTTOM OF ANCHOR	VH - SINK
GE - BOTTOM OF ANCHOR	VI - SINK
GF - BOTTOM OF ANCHOR	VJ - SINK
GF - BOTTOM OF ANCHOR	VK - SINK
GG - BOTTOM OF ANCHOR	VL - SINK
GH - BOTTOM OF ANCHOR	VM - SINK
GI - BOTTOM OF ANCHOR	VN - SINK
GJ - BOTTOM OF ANCHOR	VO - SINK
GK - BOTTOM OF ANCHOR	VP - SINK
GL - BOTTOM OF ANCHOR	VQ - SINK
GM - BOTTOM OF ANCHOR	VR - SINK
GN - BOTTOM OF ANCHOR	VS - SINK
GO - BOTTOM OF ANCHOR	VT - SINK
GP - BOTTOM OF ANCHOR	VF - SINK
GQ - BOTTOM OF ANCHOR	VG - SINK
GR - BOTTOM OF ANCHOR	VH - SINK
GR - BOTTOM OF ANCHOR	VI - SINK
GS - BOTTOM OF ANCHOR	VJ - SINK
GT - BOTTOM OF ANCHOR	VK - SINK
GU - BOTTOM OF ANCHOR	VL - SINK
GV - BOTTOM OF ANCHOR	VM - SINK
GW - BOTTOM OF ANCHOR	VN - SINK
GX - BOTTOM OF ANCHOR	VO - SINK
GY - BOTTOM OF ANCHOR	VP - SINK
GA - BOTTOM OF ANCHOR	VQ - SINK
GB - BOTTOM OF ANCHOR	VR - SINK
GC - BOTTOM OF ANCHOR	VS - SINK
GD - BOTTOM OF ANCHOR	VT - SINK
GE - BOTTOM OF ANCHOR	VF - SINK
GF - BOTTOM OF ANCHOR	VG - SINK
GF - BOTTOM OF ANCHOR	VH - SINK
GG - BOTTOM OF ANCHOR	VI - SINK
GH - BOTTOM OF ANCHOR	VJ - SINK
GI - BOTTOM OF ANCHOR	VK - SINK
GJ - BOTTOM OF ANCHOR	VL - SINK
GK - BOTTOM OF ANCHOR	VM - SINK
GL - BOTTOM OF ANCHOR	VN - SINK
GM - BOTTOM OF ANCHOR	VO - SINK
GN - BOTTOM OF ANCHOR	VP - SINK
GO - BOTTOM OF ANCHOR	VQ - SINK
GP - BOTTOM OF ANCHOR	VR - SINK
GQ - BOTTOM OF ANCHOR	VS - SINK
GR - BOTTOM OF ANCHOR	VT - SINK
GR - BOTTOM OF ANCHOR	VF - SINK
GS - BOTTOM OF ANCHOR	VG - SINK
GT - BOTTOM OF ANCHOR	VH - SINK
GU - BOTTOM OF ANCHOR	VI - SINK
GV - BOTTOM OF ANCHOR	VJ - SINK
GW - BOTTOM OF ANCHOR	VK - SINK
GX - BOTTOM OF ANCHOR	VL - SINK
GY - BOTTOM OF ANCHOR	VM - SINK
GA - BOTTOM OF ANCHOR	VN - SINK
GB - BOTTOM OF ANCHOR	VO - SINK
GC - BOTTOM OF ANCHOR	VP - SINK
GD - BOTTOM OF ANCHOR	VQ - SINK
GE - BOTTOM OF ANCHOR	VR - SINK
GF - BOTTOM OF ANCHOR	VS - SINK
GF - BOTTOM OF ANCHOR	VT - SINK
GG - BOTTOM OF ANCHOR	VF - SINK
GH - BOTTOM OF ANCHOR	VG - SINK
GI - BOTTOM OF ANCHOR	VH - SINK
GJ - BOTTOM OF ANCHOR	VI - SINK
GK - BOTTOM OF ANCHOR	VJ - SINK
GL - BOTTOM OF ANCHOR	VK - SINK
GM - BOTTOM OF ANCHOR	VL - SINK
GN - BOTTOM OF ANCHOR	VM - SINK
GO - BOTTOM OF ANCHOR	VN - SINK
GP - BOTTOM OF ANCHOR	VO - SINK
GQ - BOTTOM OF ANCHOR	VP - SINK
GR - BOTTOM OF ANCHOR	VQ - SINK
GR - BOTTOM OF ANCHOR	VR - SINK
GS - BOTTOM OF ANCHOR	VS - SINK
GT - BOTTOM OF ANCHOR	VT - SINK
GU - BOTTOM OF ANCHOR	VF - SINK
GV - BOTTOM OF ANCHOR	VG - SINK
GW - BOTTOM OF ANCHOR	VH - SINK
GX - BOTTOM OF ANCHOR	VI - SINK
GY - BOTTOM OF ANCHOR	VJ - SINK
GA - BOTTOM OF ANCHOR	VK - SINK
GB - BOTTOM OF ANCHOR	VL - SINK
GC - BOTTOM OF ANCHOR	VM - SINK
GD - BOTTOM OF ANCHOR	VN - SINK
GE - BOTTOM OF ANCHOR	VO - SINK
GF - BOTTOM OF ANCHOR	VP - SINK
GF - BOTTOM OF ANCHOR	VQ - SINK
GG - BOTTOM OF ANCHOR	VR - SINK
GH - BOTTOM OF ANCHOR	VS - SINK
GI - BOTTOM OF ANCHOR	VT - SINK
GJ - BOTTOM OF ANCHOR	VF - SINK
GK - BOTTOM OF ANCHOR	VG - SINK
GL - BOTTOM OF ANCHOR	VH - SINK
GM - BOTTOM OF ANCHOR	VI - SINK
GN - BOTTOM OF ANCHOR	VJ - SINK
GO - BOTTOM OF ANCHOR	VK - SINK
GP - BOTTOM OF ANCHOR	VL - SINK
GQ - BOTTOM OF ANCHOR	VM - SINK
GR - BOTTOM OF ANCHOR	VN - SINK
GR - BOTTOM OF ANCHOR	VO - SINK
GS - BOTTOM OF ANCHOR	VP - SINK
GT - BOTTOM OF ANCHOR	VQ - SINK
GU - BOTTOM OF ANCHOR	VR - SINK
GV - BOTTOM OF ANCHOR	VS - SINK
GW - BOTTOM OF ANCHOR	VT - SINK
GX - BOTTOM OF ANCHOR	VF - SINK
GY - BOTTOM OF ANCHOR	VG - SINK
GA - BOTTOM OF ANCHOR	VH - SINK
GB - BOTTOM OF ANCHOR	VI - SINK
GC - BOTTOM OF ANCHOR	VJ - SINK
GD - BOTTOM OF ANCHOR	VK - SINK
GE - BOTTOM OF ANCHOR	VL - SINK
GF - BOTTOM OF ANCHOR	VM - SINK
GF - BOTTOM OF ANCHOR	VN - SINK
GG - BOTTOM OF ANCHOR	VO - SINK
GH - BOTTOM OF ANCHOR	VP - SINK
GI - BOTTOM OF ANCHOR	VQ - SINK
GJ - BOTTOM OF ANCHOR	VR - SINK
GK - BOTTOM OF ANCHOR	VS - SINK
GL - BOTTOM OF ANCHOR	VT - SINK
GM - BOTTOM OF ANCHOR	VF - SINK
GN - BOTTOM OF ANCHOR	VG - SINK
GO - BOTTOM OF ANCHOR	VH - SINK
GP - BOTTOM OF ANCHOR	VI - SINK
GQ - BOTTOM OF ANCHOR	VJ - SINK
GR - BOTTOM OF ANCHOR	VK - SINK
GR - BOTTOM OF ANCHOR	VL - SINK
GS - BOTTOM	

WARENUM 31101

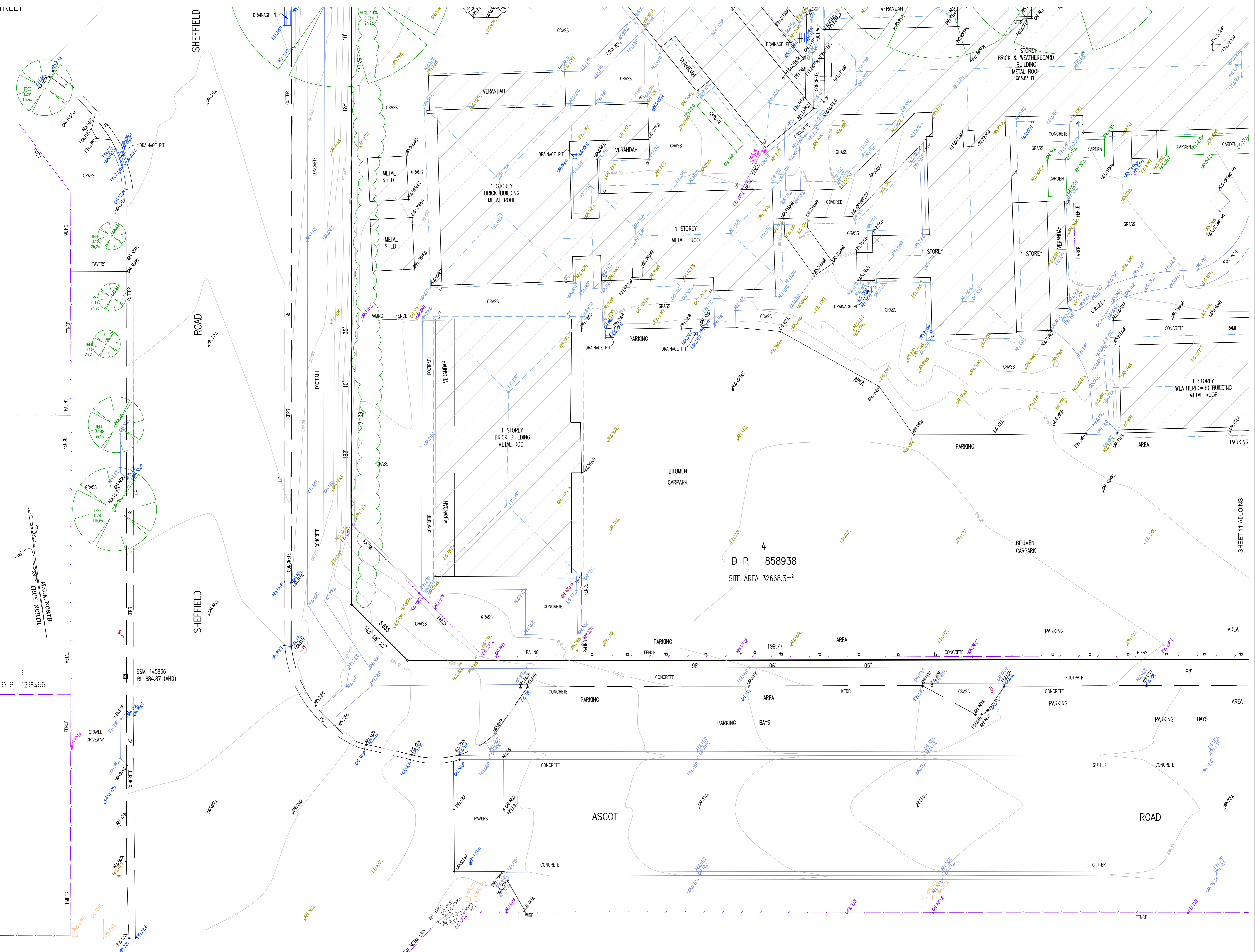
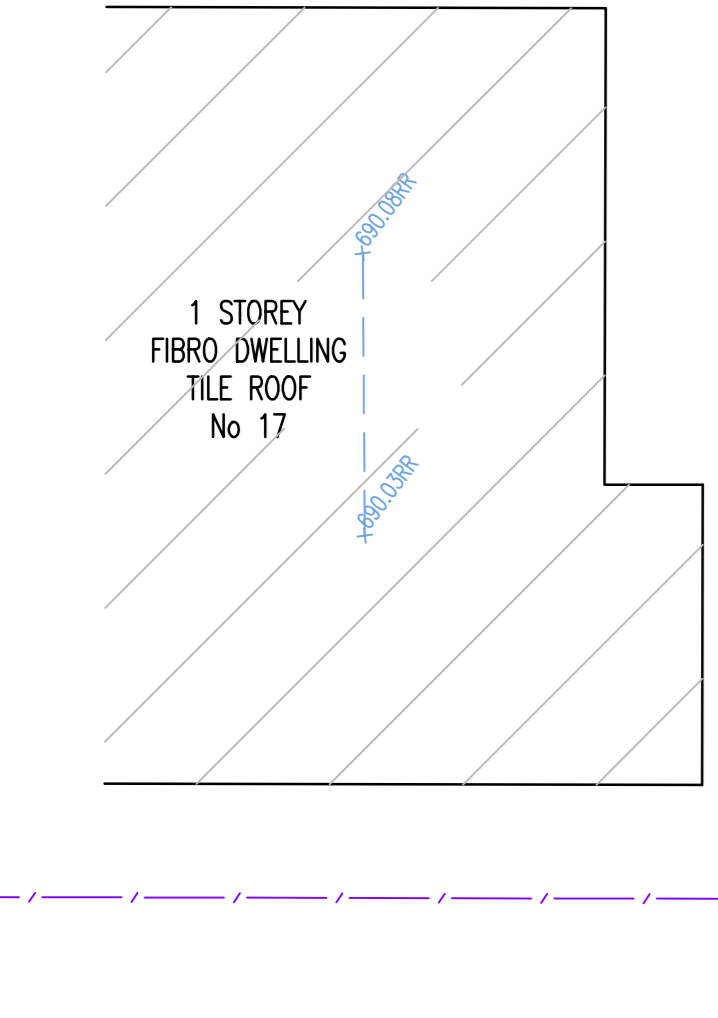
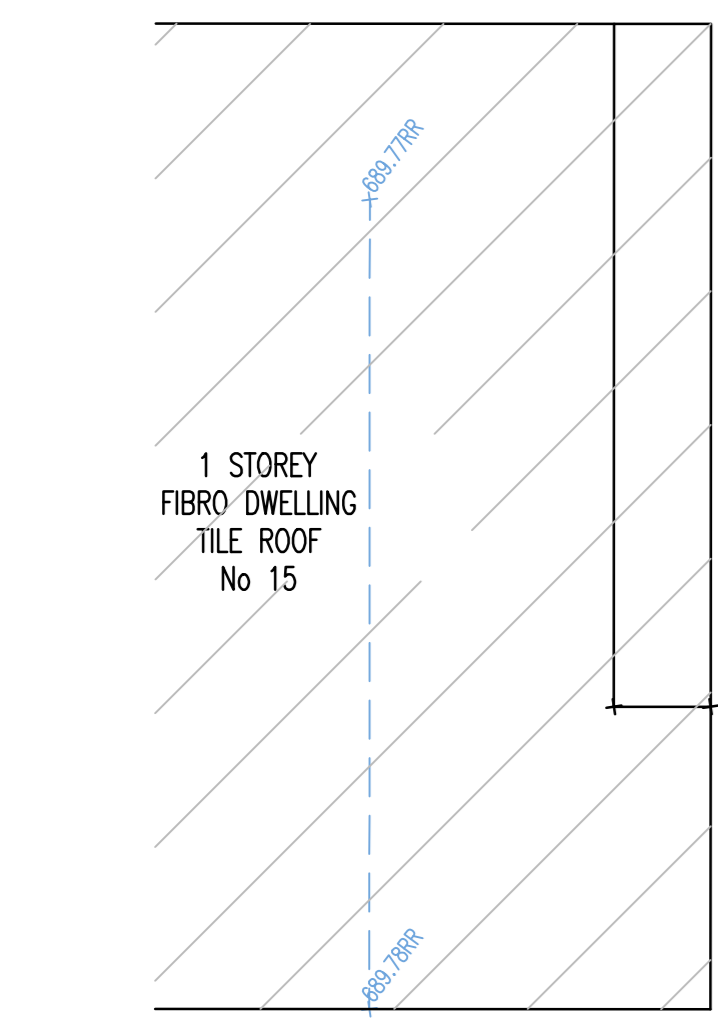
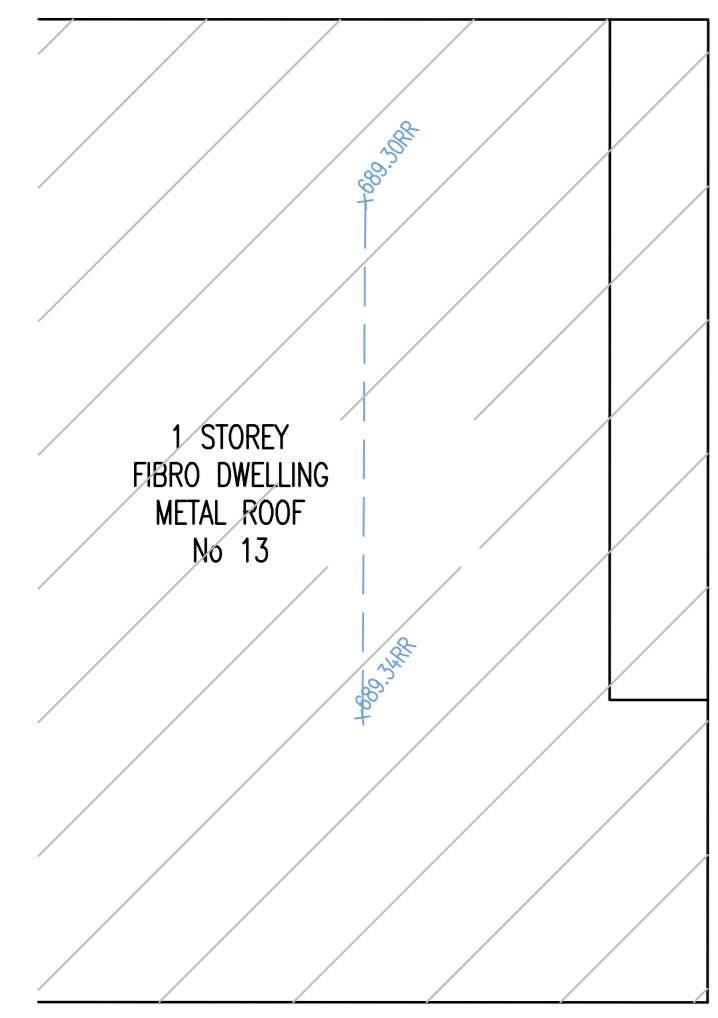
SHEET 8 ADJOINS

SHEFFIELD ROAD

SHEFFIELD ROAD

ASCOT ROAD

ROAD



M.G.A. COORDINATES			
BOUNDARY COR	EASTING	NORTHING	
1	263 504.468	6181 156.362	
2	263 300.199	6181 174.181	
3	263 306.946	6181 189.465	

(B) EASEMENT TO DRAIN WATER 2 WIDE (DP 836467)
 (C) RIGHT OF FOOTWAY 2 WIDE (DP 858938)

ISSUE	DATE	AMENDMENT	BY
2	25.07.16	ADD CONTOURS 3D MESH	PA/PH
3	10.07.17	ADD TOPOGRAPHIC INFORMATION	LS/PH
4	31.08.17	ADD INTERNAL DETAIL	LS/PH

- TYPICAL NOTES:
1. GRASS LEVELS IN 1:1000, 1:1000 (AHD)
 2. BOUNDARIES ARE ON HIGH NORTH
 3. NO DIMENSION SURVEY HAS BEEN UNDERTAKEN
 4. BOUNDARIES & DISTANCES HAVE BEEN COMPILED FROM TITLE AND/OR DEED INFORMATION SUPPLIED BY GRANTORS OF LANDS NOW
 5. RELIANCE ON IMPROVEMENTS AND DETAILS TO BOUNDARIES IS SHOWN ONLY AND SPECIFIC DETAILS OF CRITICAL WILL REQUIRE FURTHER SURVEY
 6. SERVICES SHOWN ARE BASED ON VISUAL SURVEY INCLUDING EVIDENT AT THE DATE OF SURVEY AND THE RELEVANT SERVICE DRAWINGS OF THE VARIOUS AUTHORITIES. ALL SERVICES MUST BE VERIFIED ON SITE PRIOR TO ANY WORK BEING UNDERTAKEN. UNDER NO CIRCUMSTANCES WILL LINKER BE RESPONSIBLE FOR THE ACCURACY OR COMPLETENESS OF THE SERVICES SHOWN HEREIN
 7. ROAD, GATE & CUTTER HEIGHTS HAVE BEEN OBTAINED BY AN INDIRECT METHOD AND ARE ACCORDING TO PLANNING PURPOSES ONLY
 8. ALL DIMENSIONS AND DISTANCES HAVE BEEN OBTAINED FOR DIMENSIONAL PURPOSES ONLY AND SPECIFIC DETAILS OF CRITICAL WILL REQUIRE FURTHER SURVEY
 9. THE DIMENSIONS AND DISTANCES AS SHOWN ARE OF EACH FACE IS INDICATED ONLY AND SPECIFIC DETAILS OF CRITICAL WILL REQUIRE FURTHER SURVEY
 10. DIMENSIONS ARE INDICATED ON THE TOPOGRAPHY ONLY. SPOT LEVELS SHOULD BE USED IF DETAIL IS REQUIRED TO BE UNDERGROUND
 11. CONTOUR INTERVAL 0.25 METRE

LEGEND OF TYPICAL CODES

AE - ARCHITECTURAL EMBELLISHMENT	MED - METAL LID
AF - ALUMINIUM FIN	ME - METAL SURFACE
AN - ANCHOR	OC - STRUCTURE
AP - ANCHOR POINT	OP - SPICE PIT
AS - ANCHOR SURFACE	PC - FROM CROSSING
AW - ANCHOR WALL	PC - PROVISIONAL CROSSING
BA - BOTTOM OF ANCHOR	PERG - PERGOLA
BC - BOTTOM OF CHIMNEY	PF - FINISHING MARK
BD - BOTTOM OF DOOR	PF - POWER POLE
BE - BOTTOM OF ELEVATOR	RF - ROOF
BF - BOTTOM OF FENCE	RF - ROOF ROUCE
BH - BOTTOM OF HANDRAIL	RM - RAILWAY
BI - BOTTOM OF KERB	RS - REFERENCE MARK
BJ - BOTTOM OF LAMP	RR - ROOF ROUCE
BK - BOTTOM OF LAMP	RS - ROOF ROUCE
BL - BOTTOM OF LAMP	RS - ROOF ROUCE
BM - BOTTOM OF LAMP	RS - ROOF ROUCE
BN - BOTTOM OF LAMP	RS - ROOF ROUCE
BO - BOTTOM OF LAMP	RS - ROOF ROUCE
BP - BOTTOM OF LAMP	RS - ROOF ROUCE
BQ - BOTTOM OF LAMP	RS - ROOF ROUCE
BR - BOTTOM OF LAMP	RS - ROOF ROUCE
BS - BOTTOM OF LAMP	RS - ROOF ROUCE
BT - BOTTOM OF LAMP	RS - ROOF ROUCE
BV - BOTTOM OF LAMP	RS - ROOF ROUCE
BW - BOTTOM OF LAMP	RS - ROOF ROUCE
BX - BOTTOM OF LAMP	RS - ROOF ROUCE
BY - BOTTOM OF LAMP	RS - ROOF ROUCE
BZ - BOTTOM OF LAMP	RS - ROOF ROUCE
CA - COMMUNICATIONS PIT	SW - STORM WATER
CB - COMMUNICATIONS PIT	SW - STORM WATER
CC - COMMUNICATIONS PIT	SW - STORM WATER
CD - COMMUNICATIONS PIT	SW - STORM WATER
CE - COMMUNICATIONS PIT	SW - STORM WATER
CF - COMMUNICATIONS PIT	SW - STORM WATER
CG - COMMUNICATIONS PIT	SW - STORM WATER
CH - COMMUNICATIONS PIT	SW - STORM WATER
CI - COMMUNICATIONS PIT	SW - STORM WATER
CJ - COMMUNICATIONS PIT	SW - STORM WATER
CK - COMMUNICATIONS PIT	SW - STORM WATER
CL - COMMUNICATIONS PIT	SW - STORM WATER
CM - COMMUNICATIONS PIT	SW - STORM WATER
CN - COMMUNICATIONS PIT	SW - STORM WATER
CO - COMMUNICATIONS PIT	SW - STORM WATER
CP - COMMUNICATIONS PIT	SW - STORM WATER
CQ - COMMUNICATIONS PIT	SW - STORM WATER
CR - COMMUNICATIONS PIT	SW - STORM WATER
CS - COMMUNICATIONS PIT	SW - STORM WATER
CT - COMMUNICATIONS PIT	SW - STORM WATER
CU - COMMUNICATIONS PIT	SW - STORM WATER
CV - COMMUNICATIONS PIT	SW - STORM WATER
CW - COMMUNICATIONS PIT	SW - STORM WATER
CV - COMMUNICATIONS PIT	SW - STORM WATER
CX - COMMUNICATIONS PIT	SW - STORM WATER
CY - COMMUNICATIONS PIT	SW - STORM WATER
CZ - COMMUNICATIONS PIT	SW - STORM WATER
DA - COMMUNICATIONS PIT	SW - STORM WATER
DB - COMMUNICATIONS PIT	SW - STORM WATER
DC - COMMUNICATIONS PIT	SW - STORM WATER
DD - COMMUNICATIONS PIT	SW - STORM WATER
DE - COMMUNICATIONS PIT	SW - STORM WATER
DF - COMMUNICATIONS PIT	SW - STORM WATER
DG - COMMUNICATIONS PIT	SW - STORM WATER
DH - COMMUNICATIONS PIT	SW - STORM WATER
DI - COMMUNICATIONS PIT	SW - STORM WATER
DJ - COMMUNICATIONS PIT	SW - STORM WATER
DK - COMMUNICATIONS PIT	SW - STORM WATER
DL - COMMUNICATIONS PIT	SW - STORM WATER
DM - COMMUNICATIONS PIT	SW - STORM WATER
DN - COMMUNICATIONS PIT	SW - STORM WATER
DO - COMMUNICATIONS PIT	SW - STORM WATER
DP - COMMUNICATIONS PIT	SW - STORM WATER
DQ - COMMUNICATIONS PIT	SW - STORM WATER
DR - COMMUNICATIONS PIT	SW - STORM WATER
DS - COMMUNICATIONS PIT	SW - STORM WATER
DT - COMMUNICATIONS PIT	SW - STORM WATER
DU - COMMUNICATIONS PIT	SW - STORM WATER
DV - COMMUNICATIONS PIT	SW - STORM WATER
DW - COMMUNICATIONS PIT	SW - STORM WATER
DX - COMMUNICATIONS PIT	SW - STORM WATER
DY - COMMUNICATIONS PIT	SW - STORM WATER
DZ - COMMUNICATIONS PIT	SW - STORM WATER
EA - COMMUNICATIONS PIT	SW - STORM WATER
EB - COMMUNICATIONS PIT	SW - STORM WATER
EC - COMMUNICATIONS PIT	SW - STORM WATER
ED - COMMUNICATIONS PIT	SW - STORM WATER
EE - COMMUNICATIONS PIT	SW - STORM WATER
EF - COMMUNICATIONS PIT	SW - STORM WATER
EG - COMMUNICATIONS PIT	SW - STORM WATER
EH - COMMUNICATIONS PIT	SW - STORM WATER
EI - COMMUNICATIONS PIT	SW - STORM WATER
EJ - COMMUNICATIONS PIT	SW - STORM WATER
EK - COMMUNICATIONS PIT	SW - STORM WATER
EL - COMMUNICATIONS PIT	SW - STORM WATER
EM - COMMUNICATIONS PIT	SW - STORM WATER
EN - COMMUNICATIONS PIT	SW - STORM WATER
EO - COMMUNICATIONS PIT	SW - STORM WATER
EP - COMMUNICATIONS PIT	SW - STORM WATER
EQ - COMMUNICATIONS PIT	SW - STORM WATER
ER - COMMUNICATIONS PIT	SW - STORM WATER
ES - COMMUNICATIONS PIT	SW - STORM WATER
ET - COMMUNICATIONS PIT	SW - STORM WATER
EU - COMMUNICATIONS PIT	SW - STORM WATER
EV - COMMUNICATIONS PIT	SW - STORM WATER
EW - COMMUNICATIONS PIT	SW - STORM WATER
EX - COMMUNICATIONS PIT	SW - STORM WATER
EY - COMMUNICATIONS PIT	SW - STORM WATER
EZ - COMMUNICATIONS PIT	SW - STORM WATER
FA - COMMUNICATIONS PIT	SW - STORM WATER
FB - COMMUNICATIONS PIT	SW - STORM WATER
FC - COMMUNICATIONS PIT	SW - STORM WATER
FD - COMMUNICATIONS PIT	SW - STORM WATER
FE - COMMUNICATIONS PIT	SW - STORM WATER
FF - COMMUNICATIONS PIT	SW - STORM WATER
FG - COMMUNICATIONS PIT	SW - STORM WATER
FH - COMMUNICATIONS PIT	SW - STORM WATER
FI - COMMUNICATIONS PIT	SW - STORM WATER
FJ - COMMUNICATIONS PIT	SW - STORM WATER
FK - COMMUNICATIONS PIT	SW - STORM WATER
FL - COMMUNICATIONS PIT	SW - STORM WATER
FM - COMMUNICATIONS PIT	SW - STORM WATER
FN - COMMUNICATIONS PIT	SW - STORM WATER
FO - COMMUNICATIONS PIT	SW - STORM WATER
FP - COMMUNICATIONS PIT	SW - STORM WATER
FQ - COMMUNICATIONS PIT	SW - STORM WATER
FR - COMMUNICATIONS PIT	SW - STORM WATER
FS - COMMUNICATIONS PIT	SW - STORM WATER
FT - COMMUNICATIONS PIT	SW - STORM WATER
FU - COMMUNICATIONS PIT	SW - STORM WATER
FV - COMMUNICATIONS PIT	SW - STORM WATER
FW - COMMUNICATIONS PIT	SW - STORM WATER
FX - COMMUNICATIONS PIT	SW - STORM WATER
FY - COMMUNICATIONS PIT	SW - STORM WATER
FZ - COMMUNICATIONS PIT	SW - STORM WATER
GA - COMMUNICATIONS PIT	SW - STORM WATER
GB - COMMUNICATIONS PIT	SW - STORM WATER
GC - COMMUNICATIONS PIT	SW - STORM WATER
GD - COMMUNICATIONS PIT	SW - STORM WATER
GE - COMMUNICATIONS PIT	SW - STORM WATER
GF - COMMUNICATIONS PIT	SW - STORM WATER
GG - COMMUNICATIONS PIT	SW - STORM WATER
GH - COMMUNICATIONS PIT	SW - STORM WATER
GI - COMMUNICATIONS PIT	SW - STORM WATER
GJ - COMMUNICATIONS PIT	SW - STORM WATER
GK - COMMUNICATIONS PIT	SW - STORM WATER
GL - COMMUNICATIONS PIT	SW - STORM WATER
GM - COMMUNICATIONS PIT	SW - STORM WATER
GN - COMMUNICATIONS PIT	SW - STORM WATER
GO - COMMUNICATIONS PIT	SW - STORM WATER
GP - COMMUNICATIONS PIT	SW - STORM WATER
GQ - COMMUNICATIONS PIT	SW - STORM WATER
GR - COMMUNICATIONS PIT	SW - STORM WATER
GS - COMMUNICATIONS PIT	SW - STORM WATER
GT - COMMUNICATIONS PIT	SW - STORM WATER
GU - COMMUNICATIONS PIT	SW - STORM WATER
GV - COMMUNICATIONS PIT	SW - STORM WATER
GW - COMMUNICATIONS PIT	SW - STORM WATER
GX - COMMUNICATIONS PIT	SW - STORM WATER
GY - COMMUNICATIONS PIT	SW - STORM WATER
GA - COMMUNICATIONS PIT	SW - STORM WATER

LEGEND OF TYPICAL SERVICES

CA - COMMUNICATIONS CABLE	FW - FIBRO DWELLING
CB - COMMUNICATIONS CABLE	FW - FIBRO DWELLING
CC - COMMUNICATIONS CABLE	FW - FIBRO DWELLING
CD - COMMUNICATIONS CABLE	FW - FIBRO DWELLING
CE - COMMUNICATIONS CABLE	FW - FIBRO DWELLING
CF - COMMUNICATIONS CABLE	FW - FIBRO DWELLING
CG - COMMUNICATIONS CABLE	FW - FIBRO DWELLING
CH - COMMUNICATIONS CABLE	FW - FIBRO DWELLING
CI - COMMUNICATIONS CABLE	FW - FIBRO DWELLING
CJ - COMMUNICATIONS CABLE	FW - FIBRO DWELLING
CK - COMMUNICATIONS CABLE	FW - FIBRO DWELLING
CL - COMMUNICATIONS CABLE	FW - FIBRO DWELLING
CM - COMMUNICATIONS CABLE	FW - FIBRO DWELLING
CN - COMMUNICATIONS CABLE	FW - FIBRO DWELLING
CO - COMMUNICATIONS CABLE	FW - FIBRO DWELLING
CP - COMMUNICATIONS CABLE	FW - FIBRO DWELLING
CQ - COMMUNICATIONS CABLE	FW - FIBRO DWELLING
CR - COMMUNICATIONS CABLE	FW - FIBRO DWELLING
CS - COMMUNICATIONS CABLE	FW - FIBRO DWELLING
CT - COMMUNICATIONS CABLE	FW - FIBRO DWELLING
CU - COMMUNICATIONS CABLE	FW - FIBRO DWELLING
CV - COMMUNICATIONS CABLE	FW - FIBRO DWELLING
CW - COMMUNICATIONS CABLE	FW - FIBRO DWELLING
CX - COMMUNICATIONS CABLE	FW - FIBRO DWELLING
CY - COMMUNICATIONS CABLE	FW - FIBRO DWELLING
CZ - COMMUNICATIONS CABLE	FW - FIBRO DWELLING
DA - COMMUNICATIONS CABLE	FW - FIBRO DWELLING
DB - COMMUNICATIONS CABLE	FW - FIBRO DWELLING
DC - COMMUNICATIONS CABLE	FW - FIBRO DWELLING
DD - COMMUNICATIONS CABLE	FW - FIBRO DWELLING
DE - COMMUNICATIONS CABLE	FW - FIBRO DWELLING
DF - COMMUNICATIONS CABLE	FW - FIBRO DWELLING
DG - COMMUNICATIONS CABLE	FW - FIBRO DWELLING
DH - COMMUNICATIONS CABLE	FW - FIBRO DWELLING
DI - COMMUNICATIONS CABLE	FW - FIBRO DWELLING
DJ - COMMUNICATIONS CABLE	FW - FIBRO DWELLING
DK - COMMUNICATIONS CABLE	FW - FIBRO DWELLING
DL - COMMUNICATIONS CABLE	FW - FIBRO DWELLING
DM - COMMUNICATIONS CABLE	FW - FIBRO DWELLING
DN - COMMUNICATIONS CABLE	FW - FIBRO DWELLING
DO - COMMUNICATIONS CABLE	FW - FIBRO DWELLING
DP - COMMUNICATIONS CABLE	FW - FIBRO DWELLING
DQ - COMMUNICATIONS CABLE	FW - FIBRO DWELLING
DR - COMMUNICATIONS CABLE	FW - FIBRO DWELLING
DS - COMMUNICATIONS CABLE	FW - FIBRO DWELLING
DT - COMMUNICATIONS CABLE	FW - FIBRO DWELLING
DU - COMMUNICATIONS CABLE	FW - FIBRO DWELLING
DV - COMMUNICATIONS CABLE	FW - FIBRO DWELLING
DW - COMMUNICATIONS CABLE	FW - FIBRO DWELLING
DX - COMMUNICATIONS CABLE	FW - FIBRO DWELLING
DY - COMMUNICATIONS CABLE	FW - FIBRO DWELLING
DZ - COMMUNICATIONS CABLE	FW - FIBRO DWELLING
EA - COMMUNICATIONS CABLE	FW - FIBRO DWELLING
EB - COMMUNICATIONS CABLE	FW - FIBRO DWELLING
EC - COMMUNICATIONS CABLE	FW - FIBRO DWELLING
ED - COMMUNICATIONS CABLE	FW - FIBRO DWELLING
EE - COMMUNICATIONS CABLE	FW - FIBRO DWELLING
EF - COMMUNICATIONS CABLE	FW - FIBRO DWELLING
EG - COMMUNICATIONS CABLE	FW - FIBRO DWELLING
EH - COMMUNICATIONS CABLE	FW - FIBRO DWELLING
EI - COMMUNICATIONS CABLE	FW - FIBRO DWELLING
EJ - COMMUNICATIONS CABLE	FW - FIBRO DWELLING
EK - COMMUNICATIONS CABLE	FW - FIBRO DWELLING
EL - COMMUNICATIONS CABLE	FW - FIBRO DWELLING
EM - COMMUNICATIONS CABLE	FW - FIBRO DWELLING
EN - COMMUNICATIONS CABLE	FW - FIBRO DWELLING
EO - COMMUNICATIONS CABLE	FW - FIBRO DWELLING
EP - COMMUNICATIONS CABLE	FW - FIBRO DWELLING
EQ - COMMUNICATIONS CABLE	FW - FIBRO DWELLING
ER - COMMUNICATIONS CABLE	FW - FIBRO DWELLING
ES - COMMUNICATIONS CABLE	FW - FIBRO DWELLING
ET - COMMUNICATIONS CABLE	FW - FIBRO DWELLING
EU - COMMUNICATIONS CABLE	FW - FIBRO DWELLING
EV - COMMUNICATIONS CABLE	FW - FIBRO DWELLING
EW - COMMUNICATIONS CABLE	FW - FIBRO DWELLING
EX - COMMUNICATIONS CABLE	FW - FIBRO DWELLING
EY - COMMUNICATIONS CABLE	FW - FIBRO DWELLING
EZ - COMMUNICATIONS CABLE	FW - FIBRO DWELLING
FA - COMMUNICATIONS CABLE	FW - FIBRO DWELLING
FB - COMMUNICATIONS CABLE	FW - FIBRO DWELLING
FC - COMMUNICATIONS CABLE	FW - FIBRO DWELLING
FD - COMMUNICATIONS CABLE	FW - FIBRO DWELLING
FE - COMMUNICATIONS CABLE	FW - FIBRO DWELLING
FF - COMMUNICATIONS CABLE	FW - FIBRO DWELLING
FG - COMMUNICATIONS CABLE	FW - FIBRO DWELLING
FH - COMMUNICATIONS CABLE	FW - FIBRO DWELLING
FI - COMMUNICATIONS CABLE	FW - FIBRO DWELLING
FJ - COMMUNICATIONS CABLE	FW - FIBRO DWELLING
FK - COMMUNICATIONS CABLE	FW - FIBRO DWELLING
FL - COMMUNICATIONS CABLE	FW - FIBRO DWELLING
FM - COMMUNICATIONS CABLE	FW - FIBRO DWELLING
FN - COMMUNICATIONS CABLE	FW - FIBRO DWELLING
FO - COMMUNICATIONS CABLE	FW - FIBRO DWELLING
FP - COMMUNICATIONS CABLE	FW - FIBRO DWELLING
FQ - COMMUNICATIONS CABLE	FW - FIBRO DWELLING
FR - COMMUNICATIONS CABLE	FW - FIBRO DWELLING
FS - COMMUNICATIONS CABLE	FW - FIBRO DWELLING
FT - COMMUNICATIONS CABLE	FW - FIBRO DWELLING
FU - COMMUNICATIONS CABLE	FW - FIBRO DWELLING
FV - COMMUNICATIONS CABLE	FW - FIBRO DWELLING
FW - COMMUNICATIONS CABLE	FW - FIBRO DWELLING
FX - COMMUNICATIONS CABLE	FW - FIBRO DWELLING
FY - COMMUNICATIONS CABLE	FW - FIBRO DWELLING
FZ - COMMUNICATIONS CABLE	FW - FIBRO DWELLING
GA - COMMUNICATIONS CABLE	FW - FIBRO DWELLING
GB - COMMUNICATIONS CABLE	FW - FIBRO DWELLING
GC - COMMUNICATIONS CABLE	FW - FIBRO DWELLING
GD - COMMUNICATIONS CABLE	FW - FIBRO DWELLING
GE - COMMUNICATIONS CABLE	FW - FIBRO DWELLING
GF - COMMUNICATIONS CABLE	FW - FIBRO DWELLING
GG - COMMUNICATIONS CABLE	FW - FIBRO DWELLING
GH - COMMUNICATIONS CABLE	FW - FIBRO DWELLING
GI - COMMUNICATIONS CABLE	FW - FIBRO DWELLING
GJ - COMMUNICATIONS CABLE	FW - FIBRO DWELLING
GK - COMMUNICATIONS CABLE	FW - FIBRO DWELLING
GL - COMMUNICATIONS CABLE	FW - FIBRO DWELLING
GM - COMMUNICATIONS CABLE	FW - FIBRO DWELLING
GN - COMMUNICATIONS CABLE	FW - FIBRO DWELLING
GO - COMMUNICATIONS CABLE	FW - FIBRO DWELLING
GP - COMMUNICATIONS CABLE	FW - FIBRO DWELLING
GQ - COMMUNICATIONS CABLE	FW - FIBRO DWELLING
GR - COMMUNICATIONS CABLE	FW - FIBRO DWELLING
GS - COMMUNICATIONS CABLE	FW - FIBRO DWELLING
GT - COMMUNICATIONS CABLE	FW - FIBRO DWELLING
GU - COMMUNICATIONS CABLE	FW - FIBRO DWELLING
GV - COMMUNICATIONS CABLE	FW - FIBRO DWELLING
GW - COMMUNICATIONS CABLE	FW - FIBRO DWELLING
GX - COMMUNICATIONS CABLE	FW - FIBRO DWELLING
GY - COMMUNICATIONS CABLE	FW - FIBRO DWELLING
GA - COMMUNICATIONS CABLE	FW - FIBRO DWELLING

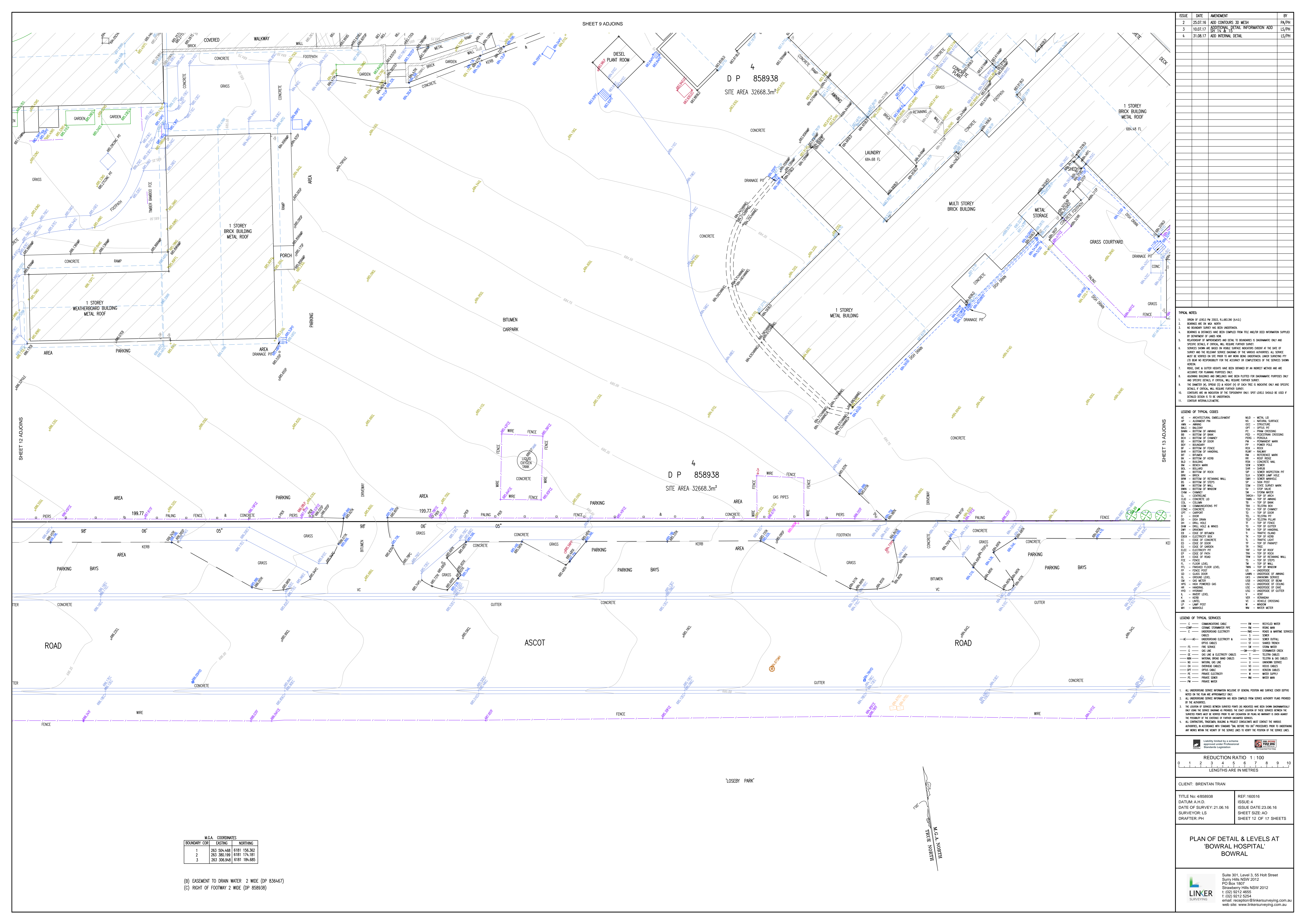
1. ALL UNDERGROUND SERVICE INFORMATION INCLUDES OF GENERAL POSITION AND SURFACE COVER DEPENDING ON THE PLAN AND APPROXIMATELY ONLY.
2. ALL UNDERGROUND SERVICE INFORMATION HAS BEEN COMPILED FROM SERVICE AUTHORITY PLANS PROVIDED BY THE AUTHORITIES.
3. THE LOCATION OF SERVICES SHOWN SURVEYED POINTS HAS BEEN SHOWN DIMENSIONALLY ONLY ON THE SERVICE DRAWING AS PROVIDED. THE EXACT LOCATION OF THESE SERVICES WITHIN THE SURVEYED POINTS MUST BE VERIFIED PRIOR TO ANY WORK BEING UNDERTAKEN BY THE CLIENT. THE PROBABILITY OF THE OCCURRENCE OF FURTHER UNDISCOVERED SERVICES.
4. ALL CONDUITS, TRUNKING, BUNDLING & PROTECTIVE COVERINGS MUST COMPLY WITH THE RELEVANT AUTHORITIES, IN ACCORDANCE WITH CURRENT STANDARDS AND NOT PROCEED FOR UNDISCOVERED ANY WORKS WITHIN THE VICINITY OF THE SERVICE LINES TO VERIFY THE POSITION OF THE SERVICE LINES.

REDUCTION RATIO 1:100
 LENGTHS ARE IN METRES

CLIENT: BRENTAN TRAN
 TITLE No: 4858938 REF: 160516
 DATUM: A.H.D. ISSUE: 4
 DATE OF SURVEY: 21.06.16 ISSUE DATE: 23.06.16
 SURVEYOR: LS SHEET SIZE: A0
 DRAFTER: PH SHEET 11 OF 17 SHEETS

PLAN OF DETAIL & LEVELS AT 'BOWRAL HOSPITAL' BOWRAL

LINKER SURVEYING
 Suite 301, Level 3, 55 Holt Street
 Surry Hills NSW 2012
 P.O. Box 180
 Stramerry Hills NSW 2012
 T: (02) 9212 4555
 F: (02) 9212 5254
 email: reception@linkersurveying.com.au
 web site: www.linkersurveying.com.au



SHEET 9 ADJOINS

D P 858938
SITE AREA 32668.3m²

D P 858938
SITE AREA 32668.3m²

ISSUE	DATE	AMENDMENT	BY
2	25.07.16	ADD CONTOURS 3D MESH	PAV/PH
3	10.07.17	ADD TO DETAIL INFORMATION ADD	LS/PH
4	31.08.17	ADD INTERNAL DETAIL	LS/PH

- TYPICAL NOTES:**
- ORIGIN OF LEVELS IN 3003, 4186, 5300 (AHD)
 - BOUNDARIES ARE ON 1:1000
 - NO EXISTING SERVICES HAVE BEEN IDENTIFIED
 - BOUNDARIES & DISTANCES HAVE BEEN COMPILED FROM TITLE AND/OR DEED INFORMATION SUPPLIED BY OWNERS OF LANDS SHOWN
 - RELATIONSHIP OF IMPROVEMENTS AND DETAIL TO BOUNDARIES IS SHOWN BY DIMENSIONS ONLY AND SPECIFIC DETAILS IF CRITICAL WILL REQUIRE FURTHER SURVEY
 - SERVICES SHOWN ARE BASED ON VISUAL SURVEY AND/OR RECORDS AT THE DATE OF SURVEY AND THE RELEVANT SERVICE OWNERS OF THE VARIOUS ACTIVITIES. ALL SERVICES MUST BE VERIFIED ON SITE PRIOR TO ANY WORK BEING UNDERTAKEN UNDER SURVEYING ACT. LIAISON WITH THE RELEVANT SERVICE OWNERS IS THE RESPONSIBILITY OF THE CLIENT.
 - ROOF, EAVE & GUTTER HEIGHTS HAVE BEEN OBTAINED BY AN INDIRECT METHOD AND ARE ACCORDING TO PLANNING PURPOSES ONLY
 - ADJOINING BUILDINGS AND DISTANCES HAVE BEEN PLUSTED FOR SHOWN BY DIMENSIONS ONLY AND SPECIFIC DETAILS IF CRITICAL WILL REQUIRE FURTHER SURVEY
 - THE DIMENSIONS AND CORNER DATA AS SHOWN ARE OF EACH AREA IS INDICATING ONLY AND SPECIFIC DETAILS IF CRITICAL WILL REQUIRE FURTHER SURVEY
 - EXISTING AND PROPOSED SERVICES ARE SHOWN BY DIMENSIONS ONLY AND SPECIFIC DETAILS IF CRITICAL WILL REQUIRE FURTHER SURVEY
 - EXISTING AND PROPOSED SERVICES ARE SHOWN BY DIMENSIONS ONLY AND SPECIFIC DETAILS IF CRITICAL WILL REQUIRE FURTHER SURVEY

LEGEND OF TYPICAL CODES

AE - ARCHITECTURAL EMBELLISHMENT	MLO - METAL LOUVER
AF - ALUMINIUM FINISH	ME - MEASURING SURFACE
AP - ANCHOR	OC - STRUCTURE
AW - ANCHOR WALL	OP - SPLICE JOINT
AWN - ANCHOR WALL	OS - OVERLAPPING CROSSING
BA - BOTTOM OF ANCHOR	PC - FROM CROSSING
BC - BOTTOM OF CHIMNEY	PE - PERGOLA
BD - BOTTOM OF DOOR	PF - FINISHING MARK
BE - BOTTOM OF EAVE	PI - POWER POLE
BF - BOTTOM OF FENCE	PK - ROCK
BH - BOTTOM OF HANDRAIL	PL - POWER LINE
BI - BOTTOM OF IRON	PM - POWER MARK
BJ - BOTTOM OF JERK	PP - POWER POINT
BK - BOTTOM OF KERB	PR - ROOF RIGID
BL - BOTTOM OF LAMP	RS - ROOF RIGID
BM - BOTTOM OF MARK	SA - SAND
BN - BOTTOM OF NAIL	SB - SAND
BO - BOTTOM OF OIL	SC - SAND
BP - BOTTOM OF PAVEMENT	SD - SAND
BR - BOTTOM OF ROOF	SE - SAND
BS - BOTTOM OF ROOF	SEI - SAND INSULATION
BT - BOTTOM OF TANK	SEI - SAND INSULATION
BU - BOTTOM OF UTILITY	SEI - SAND INSULATION
CV - CONCRETE VALVE	SEI - SAND INSULATION
CO - CONCRETE	SEI - SAND INSULATION
CP - CONCRETE PILE	SEI - SAND INSULATION
CPT - CONCRETE PILE	SEI - SAND INSULATION
CS - CONCRETE	SEI - SAND INSULATION
CT - CONCRETE	SEI - SAND INSULATION
CU - CONCRETE	SEI - SAND INSULATION
CV - CONCRETE VALVE	SEI - SAND INSULATION
CO - CONCRETE	SEI - SAND INSULATION
CP - CONCRETE PILE	SEI - SAND INSULATION
CPT - CONCRETE PILE	SEI - SAND INSULATION
CS - CONCRETE	SEI - SAND INSULATION
CT - CONCRETE	SEI - SAND INSULATION
CU - CONCRETE	SEI - SAND INSULATION

LEGEND OF TYPICAL SERVICES

AE - ARCHITECTURAL EMBELLISHMENT	AW - ANCHOR WALL	AWN - ANCHOR WALL	BA - BOTTOM OF ANCHOR	BC - BOTTOM OF CHIMNEY	BD - BOTTOM OF DOOR	BE - BOTTOM OF EAVE	BF - BOTTOM OF FENCE	BH - BOTTOM OF HANDRAIL	BI - BOTTOM OF IRON	BJ - BOTTOM OF JERK	BK - BOTTOM OF KERB	BL - BOTTOM OF LAMP	BM - BOTTOM OF MARK	BN - BOTTOM OF NAIL	BO - BOTTOM OF OIL	BP - BOTTOM OF PAVEMENT	BR - BOTTOM OF ROOF	BS - BOTTOM OF ROOF	BT - BOTTOM OF TANK	BU - BOTTOM OF UTILITY	CV - CONCRETE VALVE	CO - CONCRETE	CP - CONCRETE PILE	CPT - CONCRETE PILE	CS - CONCRETE	CT - CONCRETE	CU - CONCRETE	CV - CONCRETE VALVE	CO - CONCRETE	CP - CONCRETE PILE	CPT - CONCRETE PILE	CS - CONCRETE	CT - CONCRETE	CU - CONCRETE
----------------------------------	------------------	-------------------	-----------------------	------------------------	---------------------	---------------------	----------------------	-------------------------	---------------------	---------------------	---------------------	---------------------	---------------------	---------------------	--------------------	-------------------------	---------------------	---------------------	---------------------	------------------------	---------------------	---------------	--------------------	---------------------	---------------	---------------	---------------	---------------------	---------------	--------------------	---------------------	---------------	---------------	---------------

- ALL UNDERGROUND SERVICE INFORMATION INCLUDES OF GENERAL POSITION AND SURFACE COVER DEPENDING ON THE PLAN AND APPROXIMATELY ONLY.
- ALL UNDERGROUND SERVICE INFORMATION HAS BEEN COMPILED FROM SERVICE AUTHORITY PLANS PROVIDED BY THE AUTHORITIES.
- THE LOCATION OF SERVICES SHOWN SURVEYED POINTS ARE INDICATED BY DIMENSIONS DIMENSIONALLY ONLY ON THE SERVICE DRAWING AS PROVIDED. THE EXACT LOCATION OF THESE SERVICES WITHIN THE SERVICES TRENCH AND BE SHOWN PRIOR TO ANY WORKING BY PLACING AN APPROPRIATE MARK TO SHOW THE POSITION OF THE SERVICE OF FURTHER UNDISCOVERED SERVICES.
- ALL CONDUITS, TRAYS, BUNDLES & PROTECT CONDUITS MUST BE COVERED TO THE VARIOUS AUTHORITIES, IN ACCORDANCE WITH CHANGING THIS SERVICE TO THE PROCEDURES FROM THE UNDERGROUND AND WORK WITHIN THE VICINITY OF THE SERVICE LINES TO VERIFY THE POSITION OF THE SERVICE LINES.

REDUCTION RATIO 1:100

LENGTHS ARE IN METRES

CLIENT: BRENTAN TRAN

TITLE No: 4/858938 REF: 160516
 DATUM: A.H.D. ISSUE: 4
 DATE OF SURVEY: 21.06.16 ISSUE DATE: 23.06.16
 SURVEYOR: LS SHEET SIZE: AO
 DRAFTER: PH SHEET 12 OF 17 SHEETS

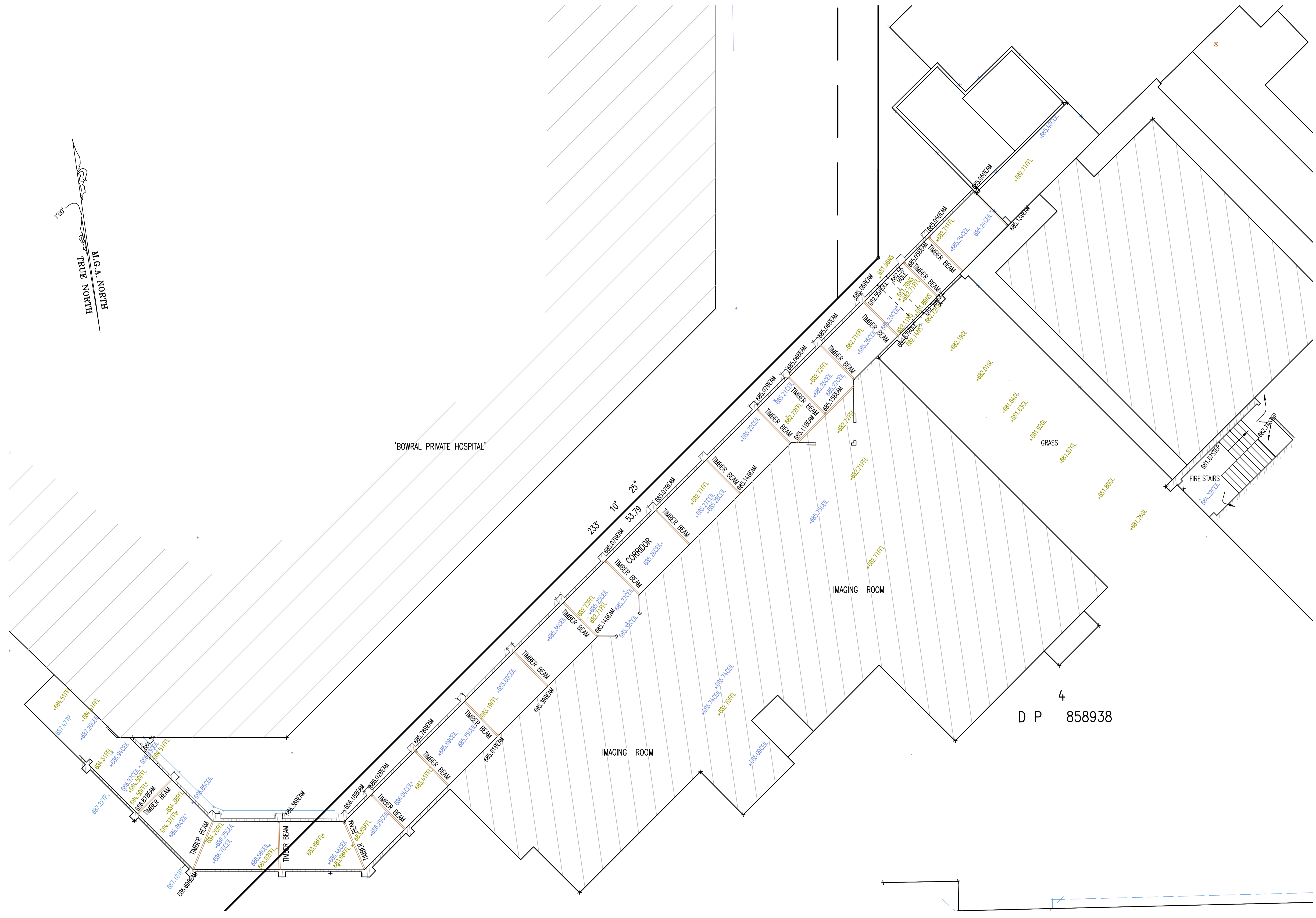
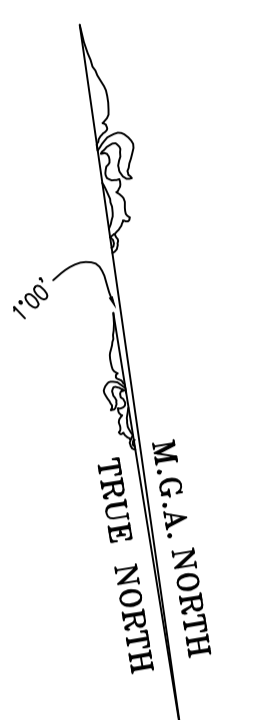
PLAN OF DETAIL & LEVELS AT 'BOWRAL HOSPITAL' BOWRAL

LINKER SURVEYING
 Suite 301, Level 3, 55 Holt Street
 Surry Hills NSW 2012
 P.O. Box 180
 Strathfield NSW 2012
 T: (02) 9212 4555
 F: (02) 9212 5254
 email: reception@linkersurveying.com.au
 web site: www.linkersurveying.com.au

M.G.A. COORDINATES

BOUNDARY COR	EASTING	NORTHING
1	283 504.488	6181 156.362
2	283 380.199	6181 174.181
3	283 336.948	6181 159.485

- (B) EASEMENT TO DRAIN WATER 2 WIDE (DP 836467)
 (C) RIGHT OF FOOTWAY 2 WIDE (DP 858938)



ISSUE	DATE	AMENDMENT	BY
2	25.07.16	ADD CONTOURS 3D MESH	PA/PH
3	10.07.17	ADDITIONAL DETAIL INFORMATION ADD SH 14 & 15	LS/PH
4	21.08.17	INTERNAL DETAIL ADDED	LS/PH

TYPICAL NOTES:

- ORIGIN OF LEVELS SSM 33023, RL.683.39 (A.H.D.)
- BEARINGS ARE ON MGA NORTH
- NO BOUNDARY SURVEY HAS BEEN UNDERTAKEN
- BEARINGS & DISTANCES HAVE BEEN COMPILED FROM TITLE AND/OR DEED INFORMATION SUPPLIED BY DEPARTMENT OF LANDS NSW
- RELATIONSHIP OF IMPROVEMENTS AND DETAIL TO BOUNDARIES IS DIAGRAMATIC ONLY AND SPECIFIC DETAILS, IF CRITICAL, WILL REQUIRE FURTHER SURVEY.
- SERVICES SHOWN ARE BASED ON VISIBLE SURFACE INDICATORS EVIDENT AT THE DATE OF SURVEY AND THE RELEVANT SERVICE DIAGRAMS OF THE VARIOUS AUTHORITIES. ALL SERVICES MUST BE VERIFIED ON SITE PRIOR TO ANY WORK BEING UNDERTAKEN. LINKERS SURVEYING PTY LTD BEAR NO RESPONSIBILITY FOR THE ACCURACY OR COMPLETENESS OF THE SERVICES SHOWN HEREON.
- RIDGE, EAVE & GUTTER HEIGHTS HAVE BEEN OBTAINED BY AN INDIRECT METHOD AND ARE ACCURATE FOR PLANNING PURPOSES ONLY.
- EXISTING BUILDINGS AND DWELLINGS HAVE BEEN PLOTTED FOR DIAGRAMATIC PURPOSES ONLY AND SPECIFIC DETAILS, IF CRITICAL, WILL REQUIRE FURTHER SURVEY.
- THE DIAMETER (Ø), SPREAD (S) & HEIGHT (H) OF EACH TREE IS INDICATIVE ONLY AND SPECIFIC DETAILS, IF CRITICAL, WILL REQUIRE FURTHER SURVEY.
- CONTOURS ARE AN INDICATION OF THE TOPOGRAPHY ONLY. SPOT LEVELS SHOULD BE USED IF DETAILED DESIGN IS TO BE UNDERTAKEN.
- CONTOUR INTERVAL 0.25METRE.

LEGEND OF TYPICAL CODES

AE - ARCHITECTURAL EMBELLISHMENT	MID - METAL LID
AP - ALIGNMENT PAV	NS - NATURAL SURFACE
AWN - AWNING	OCC - STRUCTURE
BALC - BALCONY	OPT - OPTIC PIT
BAWN - BOTTOM OF AWNING	PC - FRAM CROSSING
BD - BOTTOM OF BANK	FED - FEDESTRIAN CROSSING
BCH - BOTTOM OF CHIMNEY	PERG - PERGOLA
BDY - BOTTOM OF DOOR	PP - FURNITURE MARK
BDY - BOUNDARY	PP - POWER POLE
BF - BOTTOM OF FENCE	ROCK - ROCK
BR - BOTTOM OF HANDRAIL	RM - REFERENCE MARK
BIT - BITUMEN	RR - ROOF RIDGE
BRK - BOTTOM OF KERB	RSN - CONCRETE NAIL
BLD - BUILDING	SEW - SEWER
BM - BENCH MARK	SHR - SHRUB
BOL - BOLLARD	SHR - SHRUB INSPECTION PIT
BRK - BRICK	SLH - SEWER LAMP HOLE
BRK - BRICK	SMH - SEWER MANHOLE
BRW - BOTTOM OF RETAINING WALL	SP - SOIL POST
BS - BOTTOM OF STEPS	SSM - STATE SURVEY MARK
BRW - BOTTOM OF WINDOW	ST - STOP WALL
CHM - CHIMNEY	SW - STORM WATER
CL - CENTRELINE	TARCH - TOP OF ARCH
CLD - CONCRETE LID	TAWN - TOP OF AWNING
COL - COLUMN	TD - TOP OF CHIMNEY
COM - COMMUNICATIONS PIT	TBX - TELSTRA BOX
CONC - CONCRETE	TD - TOP OF DOOR
CPT - CARPORT	TEL - TELSTRA PILL
D - DOOR	TEL - TELSTRA PILL
DD - DISH DRAIN	TI - TOP OF FENCE
DH - DRILL HOLE & WINGS	TI - TOP OF GUTTER
DHW - DRILL HOLE & WINGS	THR - TOP OF HANDRAIL
DWY - DRIVEWAY	TI - TOP OF ISLAND
ED - EDGE OF BITUMEN	TK - TOP OF KERB
ED - EDGE OF CONCRETE	TI - TOP OF PARAPET
ED - EDGE OF DOOR	TRF - TOP OF ROOF
ED - EDGE OF GARDEN	TRK - TOP OF ROOF
ELEC - ELECTRICITY PIT	TW - TOP OF RETAINING WALL
ELP - LIGHT POLE	TS - TOP OF STEPS
EP - EDGE OF PATH	TS - TOP OF STEPS
ER - EDGE OF ROAD	TWN - TOP OF WINDOW
FCE - FENCE	US - UNDERSIDE
FL - FLOOR LEVEL	UAWN - UNDERSIDE OF AWNING
FL - FLOOR LEVEL	US - UNDERSIDE OF BEAM
FL - FLOOR LEVEL	USC - UNDERSIDE OF CEILING
GL - GLASS DOOR	USG - UNDERSIDE OF GAZE
GL - GROUND LEVEL	USG - UNDERSIDE OF GUTTER
GM - GAS METER	USC - UNDERSIDE OF CEILING
HPK - HIGH POWERED GAS	USG - UNDERSIDE OF GAZE
HR - HANDRAIL	USG - UNDERSIDE OF GUTTER
HR - HANDRAIL	V - VENT
HR - HANDRAIL	VER - VERANDAH
IL - INVERT LEVEL	W - WATER SUPPLY
IN - INVERT	WM - WATER MAN
IN - INVERT	WM - WATER METER
IP - LAMP POST	
MH - MANHOLE	

LEGEND OF TYPICAL SERVICES

C - COMMUNICATIONS CABLE	RW - RECYCLED WATER
CSWP - CERAMIC STORMWATER PIPE	RM - RIDING MANN
E - UNDERGROUND ELECTRICITY CABLES	RNG - ROADS & MARITIME SERVICES
AE - AD - UNDERGROUND ELECTRICITY & OPTIC CABLES	S - SEWER
PS - FIRE SERVICE	SO - SEWER OUTFALL
G - GAS LINE	ST - SHARED TRENCH
C - GAS LINE & ELECTRICITY CABLES	SW - STORM WATER
NBN - NATIONAL BROAD BAND CABLES	SW - STORMWATER CREEK
NG - NATURAL GAS LINE	T - TELSTRA CABLES
OC - OVERHEAD CABLES	TO - TELSTRA & GAS CABLES
OPT - OPTIC CABLE	U - UNKNOWN SERVICE
PE - PRIVATE ELECTRICITY	VO - VOICUS CABLES
PS - PRIVATE SEWER	VR - VERZON CABLES
FW - PRIVATE WATER	W - WATER SUPPLY
	WM - WATER MAN

1. ALL UNDERGROUND SERVICE INFORMATION INCLUSIVE OF GENERAL POSITION AND SURFACE COVER DEPTHS NOTED ON THE PLAN ARE APPROXIMATELY ONLY.

2. ALL UNDERGROUND SERVICE INFORMATION HAS BEEN COMPILED FROM SERVICE AUTHORITY PLANS PROVIDED BY THE AUTHORITIES.

3. THE LOCATION OF SERVICES BETWEEN SURVEYED POINTS (AS INDICATED) HAVE BEEN SHOWN DIAGRAMATICALLY ONLY USING THE SERVICE BEARINGS AS PROVIDED. THE EXACT LOCATION OF THESE SERVICES BETWEEN THE SURVEYED POINTS MUST BE VERIFIED PRIOR TO ANY EXCAVATION OR PILING. NO WARRANTY IS GIVEN AGAINST THE POSSIBILITY OF THE EXISTENCE OF FURTHER UNCHARTED SERVICES.

4. ALL CONTRACTORS, TRADESMEN, BUILDING & PROJECT CONSULTANTS MUST CONTACT THE VARIOUS AUTHORITIES, IN ACCORDANCE WITH STANDARD 'DIAL BEFORE YOU DIG' PROCEDURES PRIOR TO UNDERTAKING ANY WORKS WITHIN THE VICINITY OF THE SERVICE LINES TO VERIFY THE POSITION OF THE SERVICE LINES.

Liability limited by a scheme approved under Professional Standards Legislation

REDUCTION RATIO 1 : 100

0 1 2 3 4 5 6 7 8 9 10

LENGTHS ARE IN METRES

CLIENT: BRENTAN TRAN

TITLE No: 4/858938 REF: 160516

DATUM: A.H.D. ISSUE: 4

DATE OF SURVEY: 21.06.16 ISSUE DATE: 23.06.16

SURVEYOR: LS SHEET SIZE: A1

DRAFTER: PH SHEET 14 OF 16 SHEETS

PLAN OF INTERNAL AREA AT 'BOWRAL HOSPITAL' BOWRAL

Suite 301, Level 3, 55 Holt Street
 Surry Hills NSW 2010
 PO Box 1807
 Strawberry Hills NSW 2012
 t: (02) 9212 4655
 f: (02) 9212 5254
 email: reception@linkersurveying.com.au
 web site: www.linkersurveying.com.au

LINKERS SURVEYING
 veris A Veris Company

X:\16.08.16\858938\BOWRAL_HOSPITAL_BOWRAL_R01\BOWRAL160516-INTERNAL DETAIL EXTRACT.DWG

