

CLIENT
ST JOSEPH'S COLLEGE,
HUNTERS HILL

T+ 61 2 9816 0900



PROJECT MANAGER
Bloompark Consulting
T+ 61 2 9957 1473

QUANTITY SURVEYOR
Altus Group
T+ 61 2 9283 7311

URBAN PLANNER
Robinson Urban Planning Pty Ltd
T+ 61 2 9130 1483

STRUCTURAL & CIVIL ENGINEER
Northrop Consulting Engineering
Services (Sydney)
T+ 61 2 9241 4188

ELECTRICAL & LIFT ENGINEER
Northrop Consulting Engineering
Services (Sydney)
T+ 61 2 9241 4188

MECHANICAL & ESD ENGINEER
Umwol Lai (Sydney)
T+ 61 2 9431 9431

HYDRAULICS & FIRE PROTECTION
Aj Whipps Consulting Group
T+ 61 2 8923 8444

ACOUSTIC ENGINEER
Wilkinson Murray
T+ 61 2 8116 6119

TRAFFIC CONSULTANT
TRAFFIX
T+ 61 2 8324 8700

Abbreviations
(E) EXISTING
(N) PROPOSED
(TME) TO MATCH EXISTING

AW ALUMINIUM WINDOWS
BKF FACE BRICKWORK
EW1C EXTERNAL WALL CLADDING 1
EW2C EXTERNAL WALL CLADDING 2
EW3C EXTERNAL WALL CLADDING 3
EW4C EXTERNAL WALL CLADDING 4
EW5C EXTERNAL WALL CLADDING 5
GL GLASS LOUVRES
VB VERTICAL BLADES

Rev	Date	Description	Checked	Auth.
A	31.07.18	Issue for SSD	IB	RD

Rev	Date	Description	Checked	Auth.

Proj. Dir	Proj. Arch	Drawn
RD	IB	RT

Job No.	Sheet	Scale
161002	B1	1 : 200

NSW Notarized Architects:
Robert Darnon Reg. No. 5782
Alex Kibble Reg. No. 6015

Do not scale drawings. Verify all dimensions on site. Notify architect of all discrepancies



Project
**PHYSICAL EDUCATION AND
SPORTS PRECINCT PROJECT**

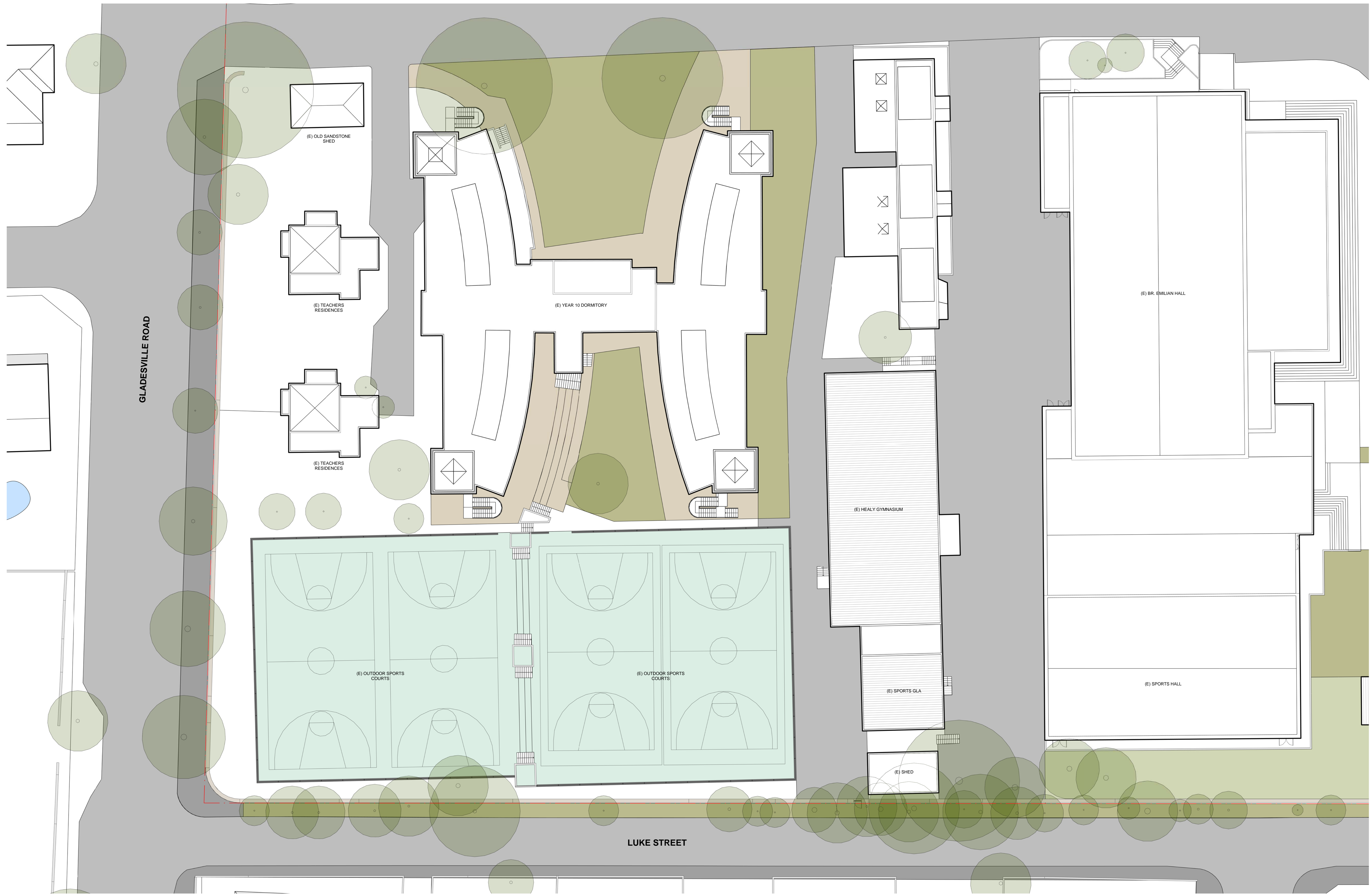
Drawing Title
EXISTING UPPER GROUND PLAN

Drawing No.
AR.DA. 2003

Tanner Kibble Denton Architects Pty Ltd
PO Box 660 Darlinghurst NSW 1300 Australia
Level 1, 19 Foster Street, Surry Hills NSW 2010 Australia
T +61 2 9281 4399
F +61 2 9281 4337
www.tkda.com.au




NOT FOR CONSTRUCTION



CLIENT
**ST JOSEPH'S COLLEGE,
 HUNTERS HILL**

T+ 61 2 9816 0900



PROJECT MANAGER
Bloompark Consulting
 T+ 61 2 9957 1473

QUANTITY SURVEYOR
Altus Group
 T+ 61 2 9283 7311

URBAN PLANNER
Robinson Urban Planning Pty Ltd
 T+ 61 2 9130 1483

STRUCTURAL & CIVIL ENGINEER
Northrop Consulting Engineering Services (Sydney)
 T+ 61 2 9241 4188

ELECTRICAL & LIFT ENGINEER
Northrop Consulting Engineering Services (Sydney)
 T+ 61 2 9241 4188

MECHANICAL & ESD ENGINEER
Umow Lal (Sydney)
 T+ 61 2 9431 9431

HYDRAULICS & FIRE PROTECTION
AJ Whipps Consulting Group
 T+ 61 2 8923 8444

ACOUSTIC ENGINEER
Wilkinson Murray
 T+ 61 2 8116 6119

TRAFFIC CONSULTANT
TRAFFIX
 T+ 61 2 8324 8700

Abbreviations
 (E) EXISTING
 (P) PROPOSED
 (TME) TO MATCH EXISTING

AW ALUMINIUM WINDOWS
 BKF FACE BRICKWORK
 EWC 1 EXTERNAL WALL CLADDING 1
 EWC 2 EXTERNAL WALL CLADDING 2
 EWC 3 EXTERNAL WALL CLADDING 3
 EWC 4 EXTERNAL WALL CLADDING 4
 EWC 5 EXTERNAL WALL CLADDING 5
 GL GLASS LOUVRES
 VB VERTICAL BLADES

Rev	Date	Description	Checked	Auth.
A	31.07.18	Issue for SSD	IB	RD

Rev	Date	Description	Checked	Auth.

Proj. Dir: RD
 Proj. Arch: IB
 Drawn: RT

Job No. Sheet Scale

161002 B1 1 : 200

NSW Notarised Architects:
 Robert Darnon Reg. No. 5782
 Alex Kibble Reg. No. 6015

Do not scale drawings. Verify all dimensions on site. Notify architect of all discrepancies.


0M 4 8 12 16 20

Project
**PHYSICAL EDUCATION AND
 SPORTS PRECINCT PROJECT**

Drawing Title
EXISTING ROOF PLAN

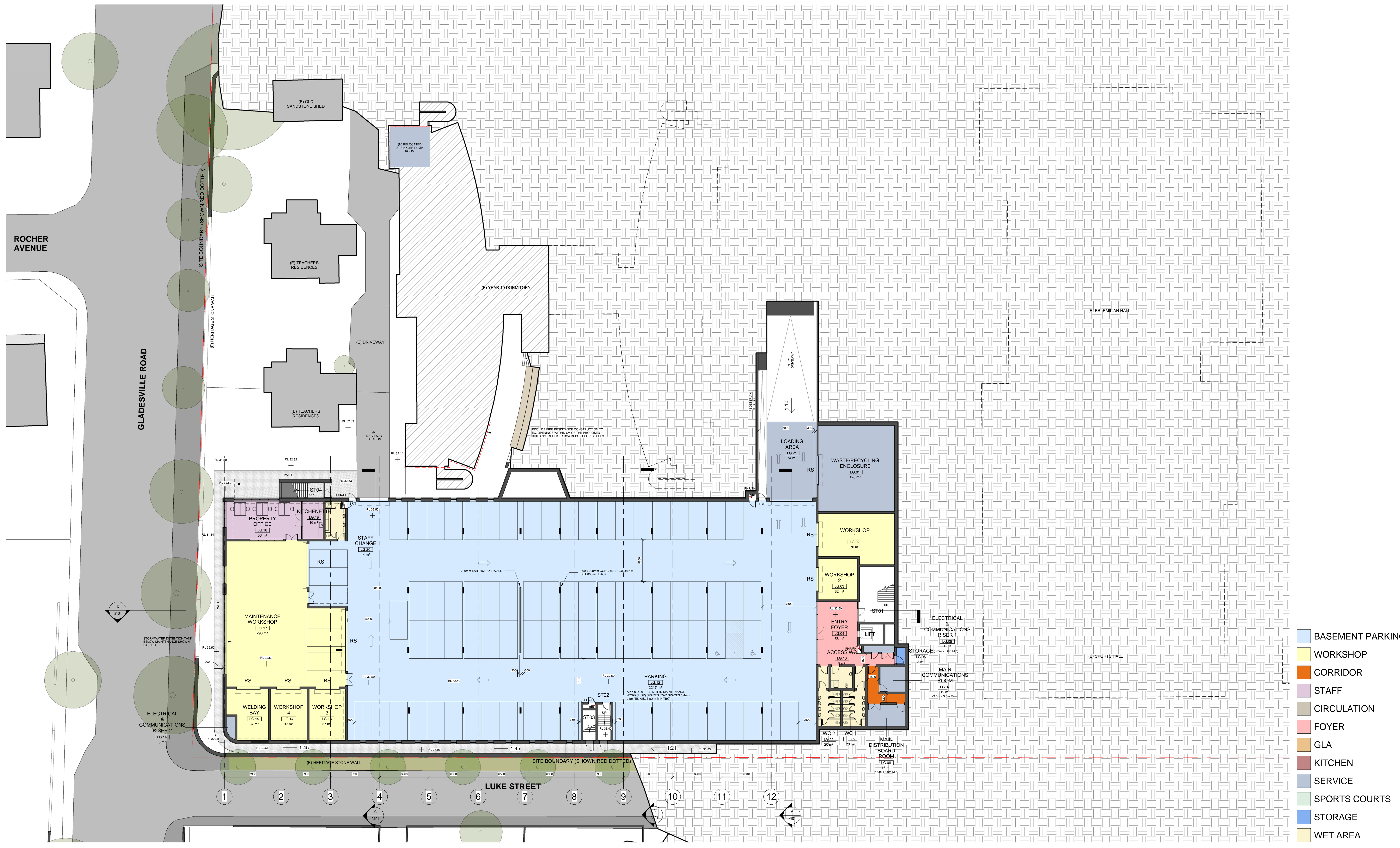
Drawing No. **AR.DA. 2004** Revision **A**

Tanner Kibble Denton Architects Pty Ltd
 PO Box 660 Darlinghurst NSW 1300 Australia
 Level 1, 19 Foster Street, Surry Hills NSW 2010 Australia
 T +61 2 9281 4399
 F +61 2 9281 4337
 www.tkda.com.au



TKDArchitects
 Tanner Kibble Denton


NOT FOR CONSTRUCTION



- BASEMENT PARKING
- WORKSHOP
- CORRIDOR
- STAFF
- CIRCULATION
- FOYER
- GLA
- KITCHEN
- SERVICE
- SPORTS COURTS
- STORAGE
- WET AREA

CLIENT
**ST JOSEPH'S COLLEGE,
HUNTERS HILL**

T + 61 2 9816 0900



PROJECT MANAGER
Bloompark Consulting
Northrop Consulting Engineering
Services (Sydney)
T + 61 2 9957 1473

QUANTITY SURVEYOR
Altus Group
Services (Sydney)
T + 61 2 9283 7311

URBAN PLANNER
Robinson Urban Planning Pty Ltd
T + 61 2 9130 1483

STRUCTURAL & CIVIL ENGINEER
**Northrop Consulting Engineering
Services (Sydney)**
T + 61 2 9241 4188

ELECTRICAL & LIFT ENGINEER
**Northrop Consulting Engineering
Services (Sydney)**
T + 61 2 9241 4188

MECHANICAL & ESD ENGINEER
Umwol Lal (Sydney)
T + 61 2 9431 9431

HYDRAULICS & FIRE PROTECTION
AJ Whipps Consulting Group
T + 61 2 8923 8444

ACOUSTIC ENGINEER
Wilkinson Murray
T + 61 2 8116 6119

TRAFFIC CONSULTANT
TRAFFIX
T + 61 2 8324 8700

Abbreviations
(E) EXISTING
(P) PROPOSED
(N) TO MATCH EXISTING
(TME) TO MATCH EXISTING

AW ALUMINUM WINDOWS
BKP FACE BRICKWORK
EWC 1 EXTERNAL WALL CLADDING 1
EWC 2 EXTERNAL WALL CLADDING 2
EWC 3 EXTERNAL WALL CLADDING 3
EWC 4 EXTERNAL WALL CLADDING 4
EWC 5 EXTERNAL WALL CLADDING 5
GL GLASS LOUVRES
VB VERTICAL BLADES

Rev	Date	Description	Checked	Auth.
A	31.07.18	Issue for SSD	IB	RD

Rev	Date	Description	Checked	Auth.

Proj. Dir. Proj. Arch. Drawn
RD IB RT

Job No. Sheet Scale
161002 B1 1 : 200

NSW Nonresident Architect:
Robert Dorton Reg. No. 5782
Alex Kibble Reg. No. 6015

Do not scale drawings. Verify all dimensions on site. Notify architect of all discrepancies.

0M 4 8 12 16 20

Project
**PHYSICAL EDUCATION AND
SPORTS PRECINCT PROJECT**

Drawing Title
**PROPOSED LOWER GROUND
PLAN**

Drawing No. Revision
AR.DA. 2101 A

Tanner Kibble Denton Architects Pty Ltd
PO Box 660 Darlinghurst NSW 1300 Australia
Level 1, 19 Foster Street, Surry Hills NSW 2010 Australia
T + 61 2 9281 4399
F + 61 2 9281 4337
www.tkda.com.au



TKD Architects
Tanner Kibble Denton

NOT FOR CONSTRUCTION



- BASEMENT PARKING
- WORKSHOP
- CORRIDOR
- STAFF
- CIRCULATION
- FOYER
- GLA
- KITCHEN
- SERVICE
- SPORTS COURTS
- STORAGE
- WET AREA

CLIENT
**ST JOSEPH'S COLLEGE,
HUNTERS HILL**

T+ 61 2 9816 0900

PROJECT MANAGER
Bloompark Consulting
T+ 61 2 9957 1473

QUANTITY SURVEYOR
Altus Group
T+ 61 2 9283 7311

URBAN PLANNER
Robinson Urban Planning Pty Ltd
T+ 61 2 9130 1483

STRUCTURAL & CIVIL ENGINEER
Northrop Consulting Engineering Services (Sydney)
T+ 61 2 9241 4188

ELECTRICAL & LIFT ENGINEER
Northrop Consulting Engineering Services (Sydney)
T+ 61 2 9241 4188

MECHANICAL & ESD ENGINEER
Umwol Lal (Sydney)
T+ 61 2 9431 9431

HYDRAULICS & FIRE PROTECTION
AJ Whipps Consulting Group
T+ 61 2 8923 8444

ACOUSTIC ENGINEER
Wilkinson Murray
T+ 61 2 8116 6119

TRAFFIC CONSULTANT
TRAFFIX
T+ 61 2 8324 8700

Abbreviations
(E) EXISTING
(P) PROPOSED
(TME) TO MATCH EXISTING

AW ALUMINIUM WINDOWS
BKF FACE BRICKWORK
EWC 1 EXTERNAL WALL CLADDING 1
EWC 2 EXTERNAL WALL CLADDING 2
EWC 3 EXTERNAL WALL CLADDING 3
EWC 4 EXTERNAL WALL CLADDING 4
EWC 5 EXTERNAL WALL CLADDING 5
GL GLASS LOUVRES
VB VERTICAL BLADES

Rev	Date	Description	Checked	Auth.
A	31.07.18	Issue for SSD	IB	RD

Rev	Date	Description	Checked	Auth.

Proj. Dir: RD
Proj. Arch: IB
Drawn: RT

Job No. Sheet Scale

161002 B1 1 : 200

NSW Non-residential Architects:
Robert Durston Reg. No. 5782
Alex Kibble Reg. No. 6015

Do not scale drawings. Verify all dimensions on site. Notify architect of all discrepancies.

0M 4 8 12 16 20

Project
**PHYSICAL EDUCATION AND
SPORTS PRECINCT PROJECT**

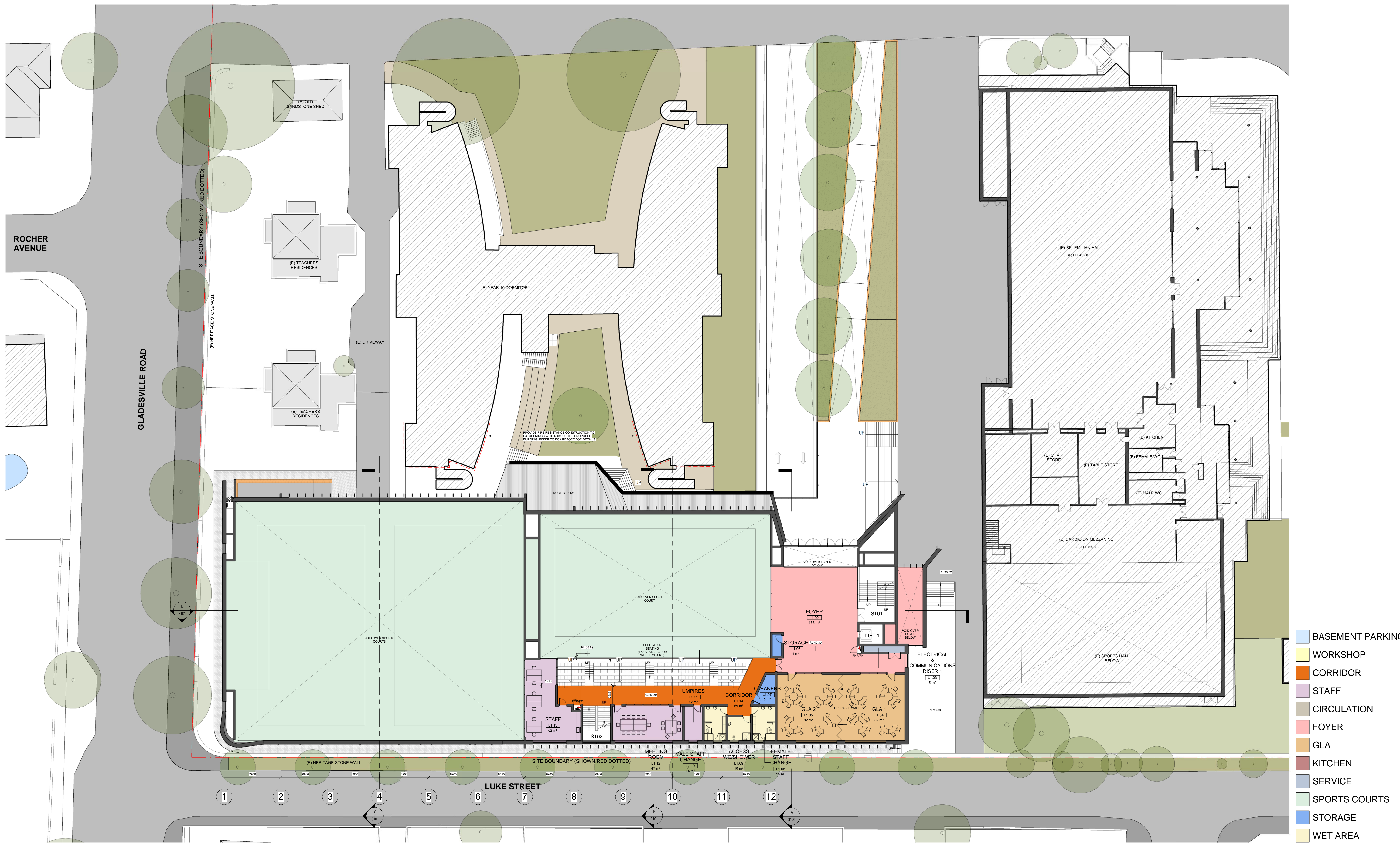
Drawing Title
**PROPOSED GROUND FLOOR
PLAN**

Drawing No. AR.DA. 2102
Revision A

Tanner Kibble Denton Architects Pty Ltd
PO Box 660 Darlinghurst NSW 1300 Australia
Level 1, 19 Foster Street, Surry Hills NSW 2010 Australia
T +61 2 9281 4399
F +61 2 9281 4337
www.tkda.com.au

TKDArchitects
Tanner Kibble Denton

NOT FOR CONSTRUCTION



CLIENT
ST JOSEPH'S COLLEGE,
HUNTERS HILL

PROJECT MANAGER
Bloompark Consulting
T+ 61 2 9957 1473

QUANTITY SURVEYOR
Altus Group
T+ 61 2 9283 7311

URBAN PLANNER
Robinson Urban Planning Pty Ltd
T+ 61 2 9130 1483



STRUCTURAL & CIVIL ENGINEER
Northrop Consulting Engineering
Services (Sydney)
T+ 61 2 9241 4188

ELECTRICAL & LIFT ENGINEER
Northrop Consulting Engineering
Services (Sydney)
T+ 61 2 9241 4188

MECHANICAL & ESD ENGINEER
Umwow Lal (Sydney)
T+ 61 2 9431 9431

HYDRAULICS & FIRE PROTECTION
Aj Whipps Consulting Group
T+ 61 2 8923 8444

ACOUSTIC ENGINEER
Wilkinson Murray
T+ 61 2 8116 6119

TRAFFIC CONSULTANT
TRAFFIX
T+ 61 2 8324 8700

Abbreviations
(E) EXISTING
(N) PROPOSED
(TME) TO MATCH EXISTING

AW ALUMINUM WINDOWS
BKF FACE BRICKWORK
EWC 2 EXTERNAL WALL CLADDING 2
EWC 3 EXTERNAL WALL CLADDING 3
EWC 4 EXTERNAL WALL CLADDING 4
EWC 5 EXTERNAL WALL CLADDING 5
GL GLASS LOUVRES
VB VERTICAL BLADES

Rev	Date	Description	Checked	Auth.
A	31.07.18	Issue for SSD	IB	RD

NOT FOR CONSTRUCTION

Rev	Date	Description	Checked	Auth.	
Proj. Dir	Proj. Arch	Drawn			
RD	IB	RT			
Job No.	Sheet	Scale			
161002	B1	1 : 200			
NSW Non-Registered Architects: Robert Durston Reg. No. 5782 Alex Kibble Reg. No. 6015					
Do not scale drawings. Verify all dimensions on site. Notify architect of all discrepancies.					
0M	4	8	12	16	20

Project
**PHYSICAL EDUCATION AND
SPORTS PRECINCT PROJECT**

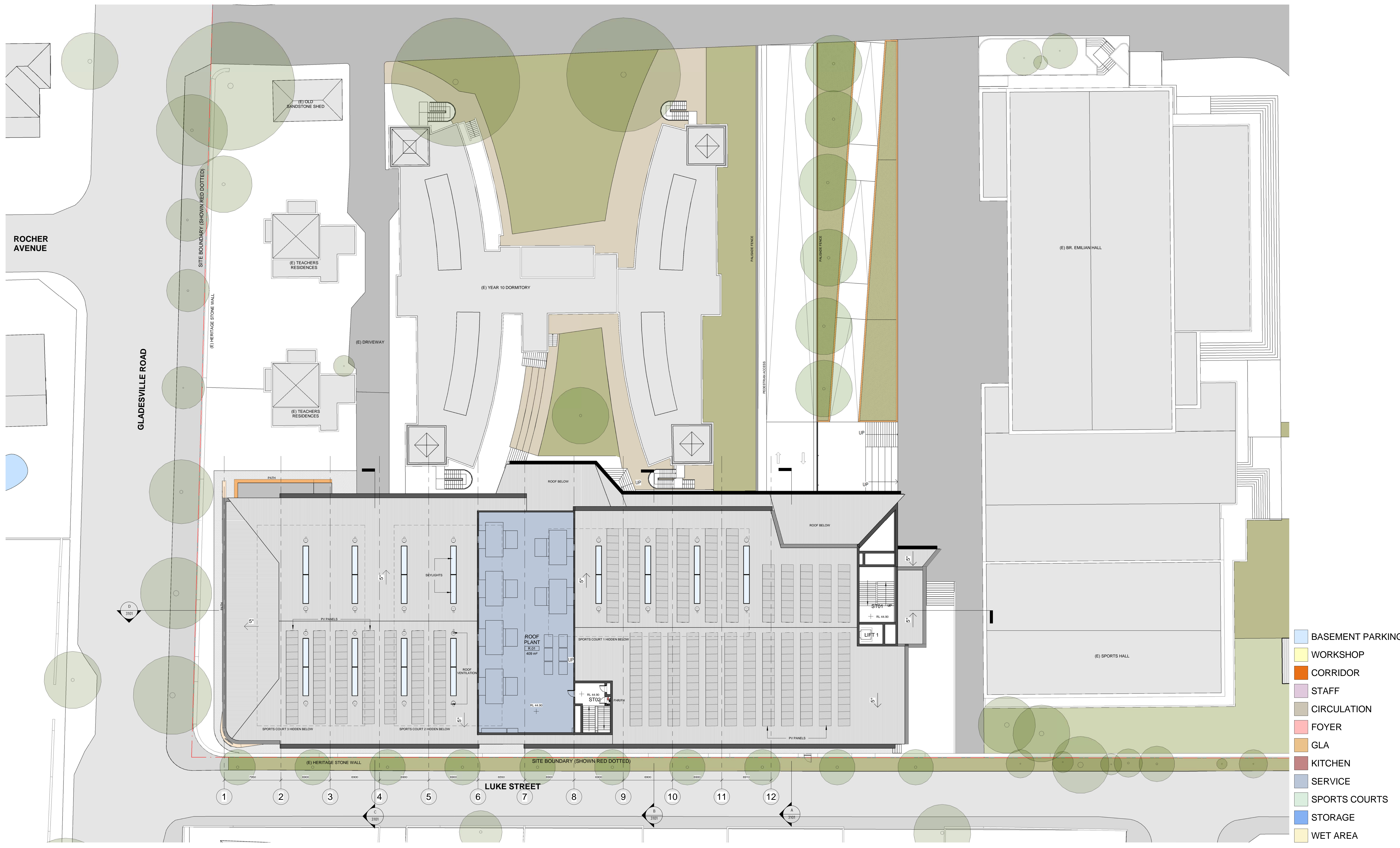
Drawing Title
PROPOSED FIRST FLOOR PLAN

Drawing No.
AR.DA. 2103

Revision
A

Tanner Kibble Denton Architects Pty Ltd
PO Box 660 Darlinghurst NSW 1300 Australia
Level 1, 19 Foster Street, Surry Hills NSW 2010 Australia
T +61 2 9281 4399
F +61 2 9281 4337
www.tkda.com.au


TKDArchitects
Tanner Kibble Denton



- BASEMENT PARKING
- WORKSHOP
- CORRIDOR
- STAFF
- CIRCULATION
- FOYER
- GLA
- KITCHEN
- SERVICE
- SPORTS COURTS
- STORAGE
- WET AREA

CLIENT
**ST JOSEPH'S COLLEGE,
HUNTERS HILL**

T+ 61 2 9816 0900



PROJECT MANAGER
Bloompark Consulting
T+ 61 2 9957 1473

QUANTITY SURVEYOR
Altus Group
T+ 61 2 9283 7311

URBAN PLANNER
Robinson Urban Planning Pty Ltd
T+ 61 2 9130 1483

STRUCTURAL & CIVIL ENGINEER
Northrop Consulting Engineering Services (Sydney)
T+ 61 2 9241 4188

ELECTRICAL & LIFT ENGINEER
Northrop Consulting Engineering Services (Sydney)
T+ 61 2 9241 4188

MECHANICAL & ESD ENGINEER
Umwol Lal (Sydney)
T+ 61 2 9431 9431

HYDRAULICS & FIRE PROTECTION
AJ Whipps Consulting Group
T+ 61 2 8923 8444

ACOUSTIC ENGINEER
Wilkinson Murray
T+ 61 2 8116 6119

TRAFFIC CONSULTANT
TRAFFIX
T+ 61 2 8324 8700

Abbreviations
(E) EXISTING
(N) PROPOSED
(TME) TO MATCH EXISTING

AW ALUMINIUM WINDOWS
BKW FACE BRICKWORK
EWC1 EXTERNAL WALL CLADDING 1
EWC2 EXTERNAL WALL CLADDING 2
EWC3 EXTERNAL WALL CLADDING 3
EWC4 EXTERNAL WALL CLADDING 4
EWC5 EXTERNAL WALL CLADDING 5
GL GLASS LOUVRES
VB VERTICAL BLADES

Rev	Date	Description	Checked	Auth.
A	31.07.18	Issue for SSD	IB	RD

Rev	Date	Description	Checked	Auth.

Proj. Dir: RD
Proj. Arch: IB
Drawn: RT

Job No. Sheet Scale

161002 B1 1 : 200

NSW Notarised Architects:
Robert Durston Reg. No. 5782
Alex Kibble Reg. No. 6015

Do not scale drawings. Verify all dimensions on site. Notify architect of all discrepancies.

0M 4 8 12 16 20

Project
**PHYSICAL EDUCATION AND
SPORTS PRECINCT PROJECT**

Drawing Title
PROPOSED ROOF PLAN

Drawing No. **AR.DA. 2104**

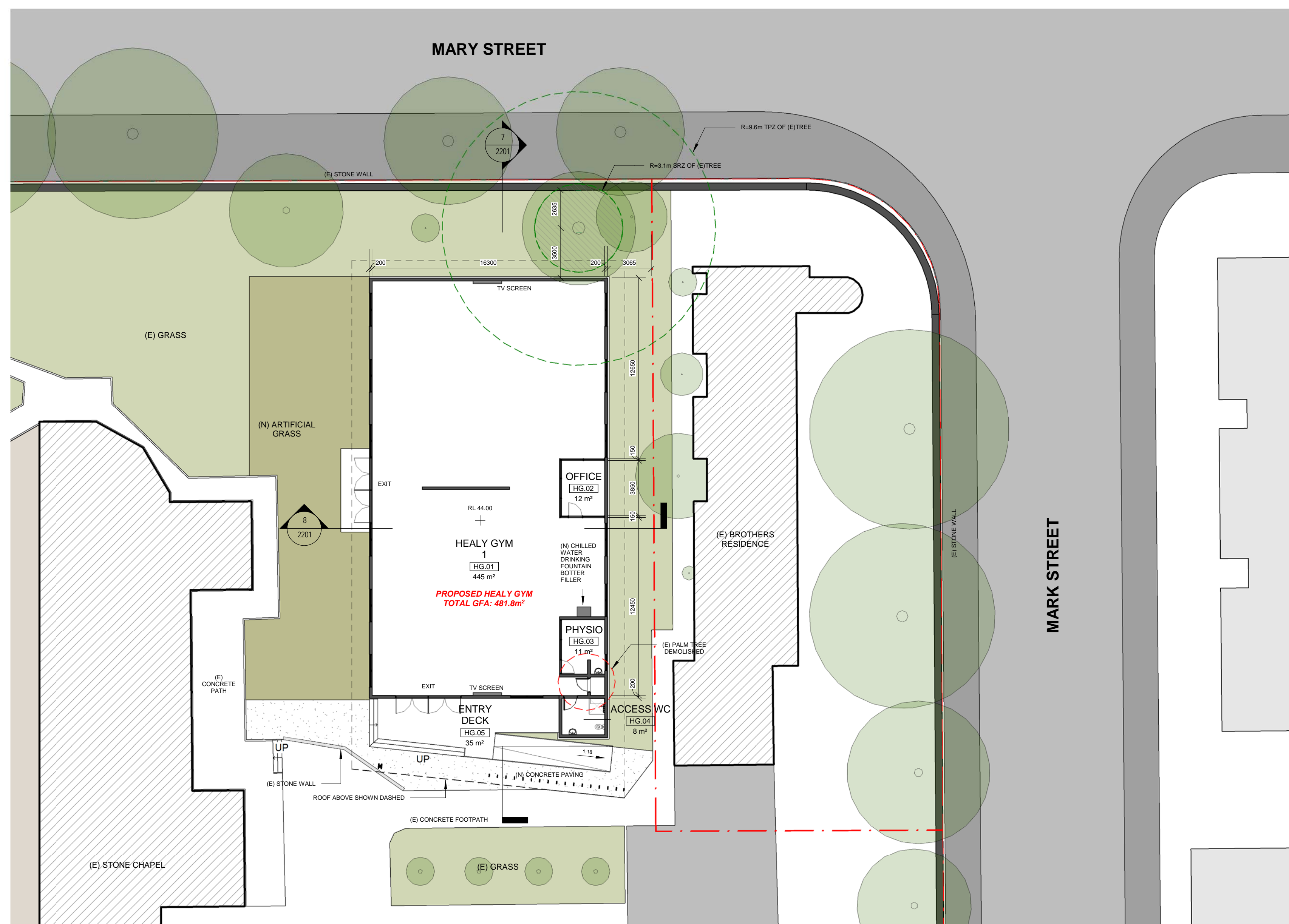
Revision **A**

Tanner Kibble Denton Architects Pty Ltd
PO Box 660 Darlinghurst NSW 1300 Australia
Level 1, 19 Foster Street, Surry Hills NSW 2010 Australia
T +61 2 9281 4399
F +61 2 9281 4337
www.tkda.com.au

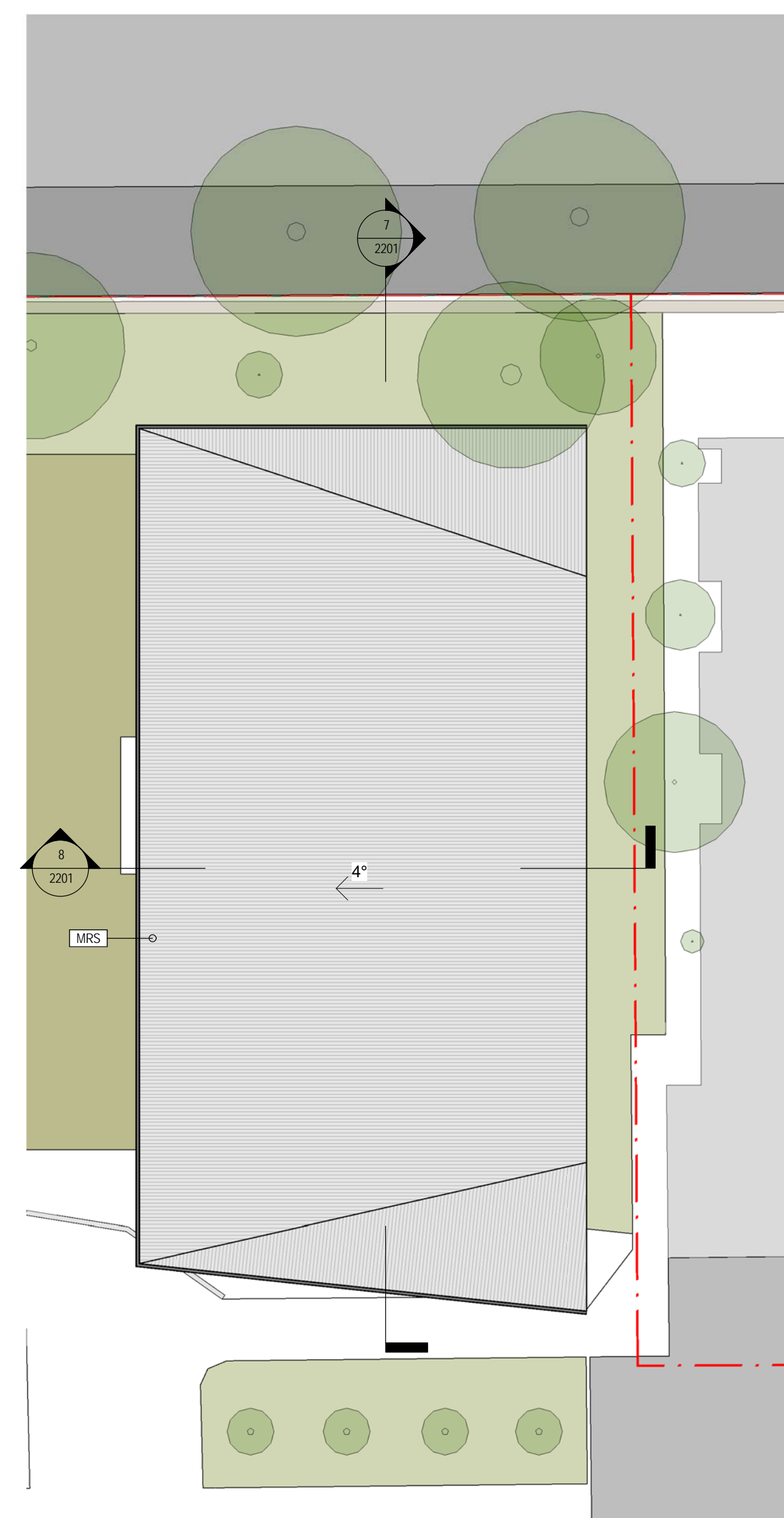


TKD Architects
Tanner Kibble Denton

NOT FOR CONSTRUCTION



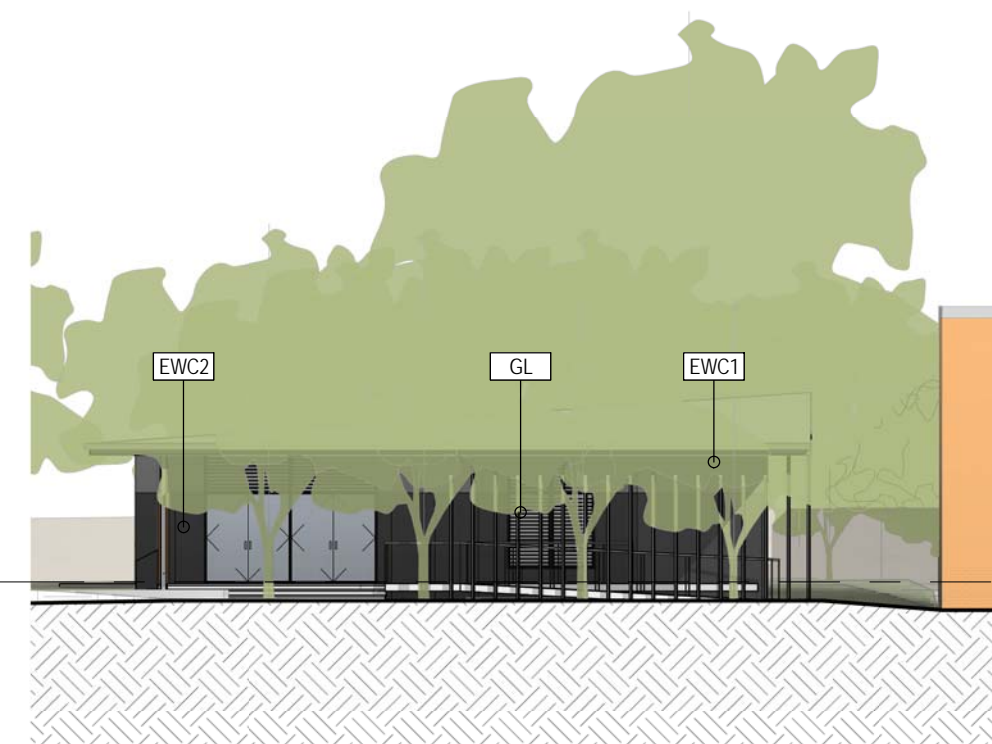
1 PROPOSED HEALY GYM PLAN
1 : 200



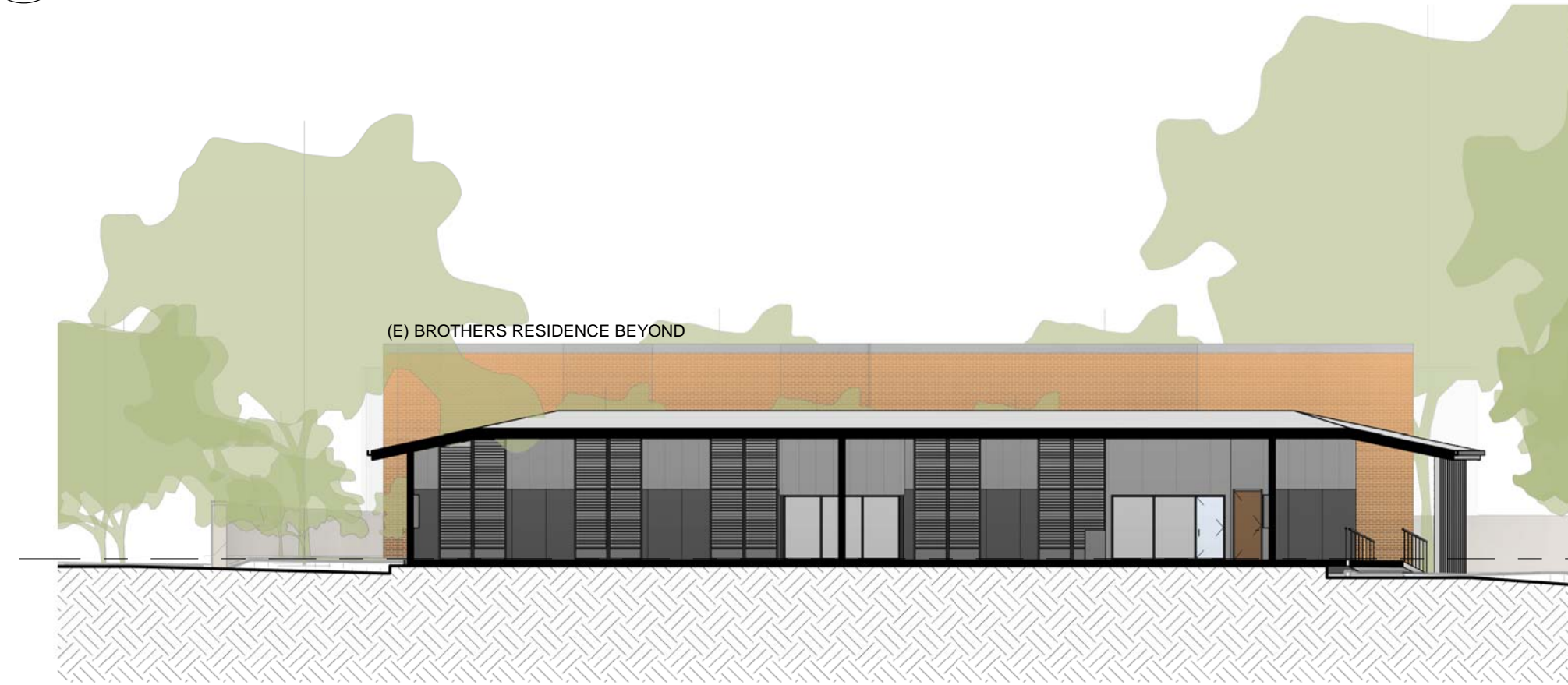
2 PROPOSED HEALY GYM ROOF PLAN
1 : 200



3 NORTH ELEVATION
1 : 200



4 EAST ELEVATION
1 : 200



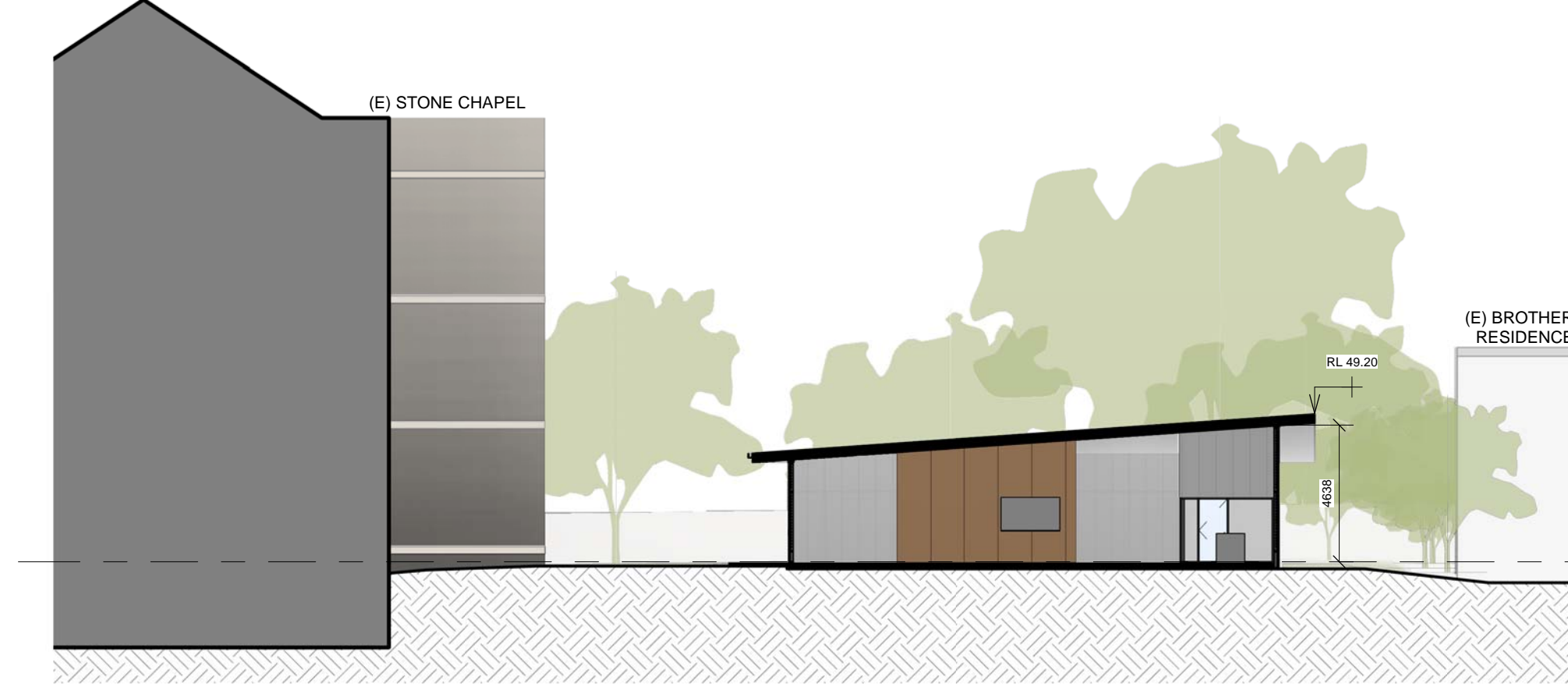
7 LONG SECTION
1 : 200



5 SOUTH ELEVATION
1 : 200



6 WEST ELEVATION
1 : 200



8 SHORT SECTION
1 : 200

CLIENT
ST JOSEPH'S COLLEGE,
HUNTERS HILL

T+ 61 2 9816 0900



PROJECT MANAGER
Bloompark Consulting

T+ 61 2 9957 1473

QUANTITY SURVEYOR
Altus Group

T+ 61 2 9283 7311

URBAN PLANNER
Robinson Urban Planning Pty Ltd

T+ 61 2 9130 1483

STRUCTURAL & CIVIL ENGINEER
Northrop Consulting Engineering
Services (Sydney)

T+ 61 2 9241 4188

ELECTRICAL & LIFT ENGINEER
Northrop Consulting Engineering
Services (Sydney)

T+ 61 2 9241 4188

MECHANICAL & ESD ENGINEER
Umwol Lal (Sydney)

T+ 61 2 9431 9431

HYDRAULICS & FIRE PROTECTION
Aj Whipps Consulting Group

T+ 61 2 8923 8444

ACOUSTIC ENGINEER
Wilkinson Murray

T+ 61 2 8116 6119

TRAFFIC CONSULTANT
TRAFFIX

T+ 61 2 8324 8700

Abbreviations

(E) EXISTING

(N) PROPOSED

(TME) TO MATCH EXISTING

AW ALUMINIUM WINDOWS

BKRF FACE BRICKWORK

EWC 1 EXTERNAL WALL CLADDING 1

EWC 2 EXTERNAL WALL CLADDING 2

EWC 3 EXTERNAL WALL CLADDING 3

EWC 4 EXTERNAL WALL CLADDING 4

EWC 5 EXTERNAL WALL CLADDING 5

GL GLASS LOUVRES

VB VERTICAL BLADES

Rev	Date	Description	Checked	Auth.
A	31.07.18	Issue for SSD	IB	RD

Rev	Date	Description	Checked	Auth.

Proj. Dir.	Proj. Arch.	Drawn
RD	IB	RT

Job No.	Sheet	Scale
161002	B1	1 : 200

NSW Notified Architects:
Robert Denton Reg. No. 5782
Alex Kibble Reg. No. 6015

Do not scale drawings. Verify all dimensions on site. Notify architect of all discrepancies.

0M 4 8 12 16 20

Project
**PHYSICAL EDUCATION AND
SPORTS PRECINCT PROJECT**

Drawing Title
PROPOSED HEALY GYM

Drawing No. AR.DA. 2201

Revision A

Tanner Kibble Denton Architects Pty Ltd
PO Box 660 Darlinghurst NSW 1300 Australia
Level 1, 19 Foster Street, Surry Hills NSW 2010 Australia

T + 61 2 9281 4399
F + 61 2 9281 4337
www.tkda.com.au

TKDArchitects
Tanner Kibble Denton

NOT FOR CONSTRUCTION